

# Intel StorageExpress™ II System

## Automated data protection for enterprise networks



### Features at a glance

- Centrally managed, automated backup and restore
- Fully integrated backup server offers maximum reliability
- Protects data on NetWare\* (including NDS), UNIX\* and Windows NT\* servers
- Protects data on DOS, Windows,\* OS/2,\* Windows NT and UNIX workstations
- Unattended backup with fully automated tape rotation
- Integrates with LANDesk® Management Suite, Novell's ManageWise\* and NMS\*
- The only backup system with event-driven backup
- High capacity, easy scalability
- Open database backup on NetWare servers
- Fast, easy installation
- Connects directly to Ethernet, Token Ring, FDDI and 100Mbps Fast Ethernet networks

The Intel StorageExpress™ II System (which includes software release 1.50) is the only dedicated backup server specifically designed for enterprise networks running mission-critical applications. The StorageExpress system automates and centralizes backup services for Novell networks, including UNIX\* and Microsoft Windows NT\* servers and workstations. The system's extensive automation simplifies administration while reducing chances of human error. Centralized management lets you easily configure and monitor all backup jobs from your desktop. And the StorageExpress system is fully integrated with network management tools such as Intel's LANDesk® Management Suite, Novell's ManageWise\* and NetWare Management System\* (NMS), making your job even easier and allowing the system to proactively protect network data.

### Fully integrated for optimum reliability

Backup tasks shouldn't be left to your file servers. The extra burden ordinary backup software puts on the memory, hard disk and CPU can compromise both network backup and overall network reliability. What was once a tedious, time-consuming and error-prone task is now automated and highly reliable. There's no need to take down file servers or disrupt network operations in any way. Simply connect the StorageExpress system anywhere on the network and install the management software on your workstation.

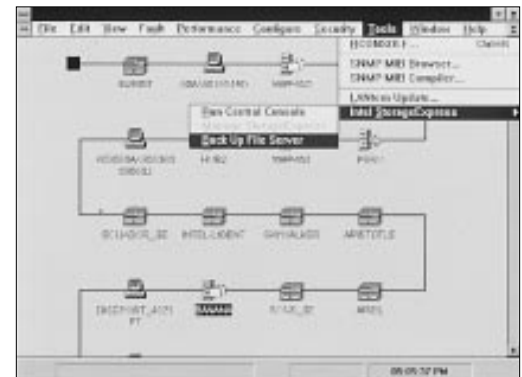
### Automation eases administration

Backup reliability and administration are both enhanced by the high degree of automation in the StorageExpress system. A good example is the optional autochanger tape drive. It allows the system to function unattended by automatically rotating tapes, an area where human error frequently occurs.

Event-driven backup, used in conjunction with LANDesk Management Suite or Novell's ManageWise or NMS, lets you predefine specific backup activities that are automatically initiated in response to data-threatening events – events such as a mirrored hard drive crash, a full hot fix table or a file server disk reaching capacity.



Back up your entire network from one StorageExpress™ system Central Console.



The StorageExpress™ system is the only backup solution to integrate into Novell's ManageWise\* and NMS\* to form a single central network and data management console.



**Upgrade Options  
Product**

	<b>Order Number</b>
DAT Autochanger Upgrade Kit	SMS48ACUPK
DAT Autochanger Upgrade Peripheral Box	SMS248ACGPB
8GB DAT Upgrade Kit	SMS48UPK
8GB DAT Upgrade Peripheral Box	SMS248GPB
8mm Upgrade Kit	SMS714UPK
8mm Upgrade Peripheral Box	SMS2714GPB
StorageExpress™ System Token Ring Option Kit	SMS22TRU
10Mbps Ethernet for BNC Option Kit (XL models)	SMS210ETU
StorageExpress™ System FDDI Fiber SAS Option Kit	SMSFDDFIBSAS
StorageExpress System FDDI Fiber DAS Option Kit	SMSFDDFIBDAS
StorageExpress System Client Agent for Windows NT*	SMSNTAGNT
StorageExpress System Client Agent for SCO UNIX*	SMSUASCO
StorageExpress System Client Agent for Solaris* (SPARC and Intel Architecture)	SMSUASLRS
StorageExpress System Client Agent for IBM AIX*	SMSUAIBMAIX
StorageExpress System Client Agent for HP/UX*	SMSUAHPUX
StorageExpress System Client Agent for Novell UnixWare*	SMSUAUNXWR
StorageExpress System Backup Agent for BTRIEVE Databases (NLM version)	SMSDBBTRVE
StorageExpress System Backup Agent for Oracle 6/7 Databases (NLM version)	
16-user	SMSDBNWOR16
48-user	SMSDBNWOR48
Unlimited users	SMSDBNWORUL
StorageExpress System Novell NMS* Option Kit	SMSNMSUPK

**FaxBack\* Document**

	<b>Document Number</b>
StorageExpress™ Backup Server Data Sheet	6700
What's New in the StorageExpress System	6701
StorageExpress System Upgrade Programs	8612
StorageExpress System Evaluation Programs (North America)	9931
White Paper #1: StorageExpress System – The Integrated Approach	6702
White Paper #2: Maximizing Performance with StorageExpress System	6706
White Paper #3: Automating Enterprise Backup	6737
Questions and Answers on Storage Express System	6710
StorageExpress System Configuration Guide	6730
Gold Expeditor Plan: Contract	6715
Gold Expeditor Plan: Service and Support Options	6718

Call 800-525-3019 or 503-264-6835 to order FaxBack documents.

**Network Topology Support  
10Mbps Ethernet (standard on  
ELD; optional on XL models)**

- 10BASE-T (TPE) and 10BASE-2 interfaces
- Supports 802.2, 802.3, SNAP and Type II frame types

**100Mbps Fast Ethernet  
(standard on XL models)**

- 100BASE-T
- Category 5 wire required
- Supports 802.2, 802.3, SNAP and Type II frame types

**Token Ring (Option)**

- Supports 4 or 16Mbps ring speeds
- Supports both STP (Type 1) and UTP (Type 3) cabling
- Supports 802.5 and SNAP frame types

- Supports Source Routing

**FDDI (Option)**

- Fiber – Single Attached Station (SAS)
- Fiber – Dual Attached Station (DAS)
- Supports FDDI 802.2 and FDDI SNAP frame types
- Supports Dual Homing

\* Third party trademarks are the property of their respective owners.



# Intel StorageExpress™ II System

*"...one of the most complete and well-rounded backup products on the market."*

– PC Magazine, April 25, 1995

*"There's not a network around that doesn't need Intel's StorageExpress [System]."*

– PC Computing, December 1993

*"StorageExpress is the system of choice for managed backup on enterprise networks."*

– InfoWorld, 1993

*"Every Novell network could use one of these."*

– PC User, July 1993

*"StorageExpress is arguably the most comprehensive backup system available."*

– InfoWorld, 1995

*"Intel has anticipated and addressed every aspect of file archival and restoration."*

– Network Computing, August 1994

*"If there's a feature to make the administrator's life easier, it's in there."*

– Network Computing, August 1994

And forget about babysitting your backup. The StorageExpress system will let you know when it needs attention, such as having an incorrect tape or an unsuccessful backup, through a page, fax or e-mail (when used with LANdesk Management Suite).

Automatic tape-to-tape copy creates a duplicate version of a tape at the end of a backup job so you can keep one tape onsite and send one offsite. Other automated features that simplify network administration include scheduled self-backup, automatic tape label generation and prompts that tell you when it's time to change tapes or even clean the tape drives.

## Centralized control

You control all StorageExpress system functions via the Windows\*-based Central Console software that resides on your workstation. From the convenience of your desktop, you can access any StorageExpress backup server anywhere on the network to view activity logs or perform any other backup or restore function.

ManageWise integration means you can also manage all of your StorageExpress systems from within your ManageWise console. NMS is also available as an option that can be hosted on the StorageExpress system, rather than a NetWare file server. You'll free up valuable file server resources that no longer have to run the NLMs associated with NMS.

## Streamlined backup and restore

Most StorageExpress system functions are predefined and set as defaults, making setup fast and easy. There's no need for programming, although you can modify parameters and customize your backup to the specific needs of your network – all with the simplicity of a Windows-based point and click interface.

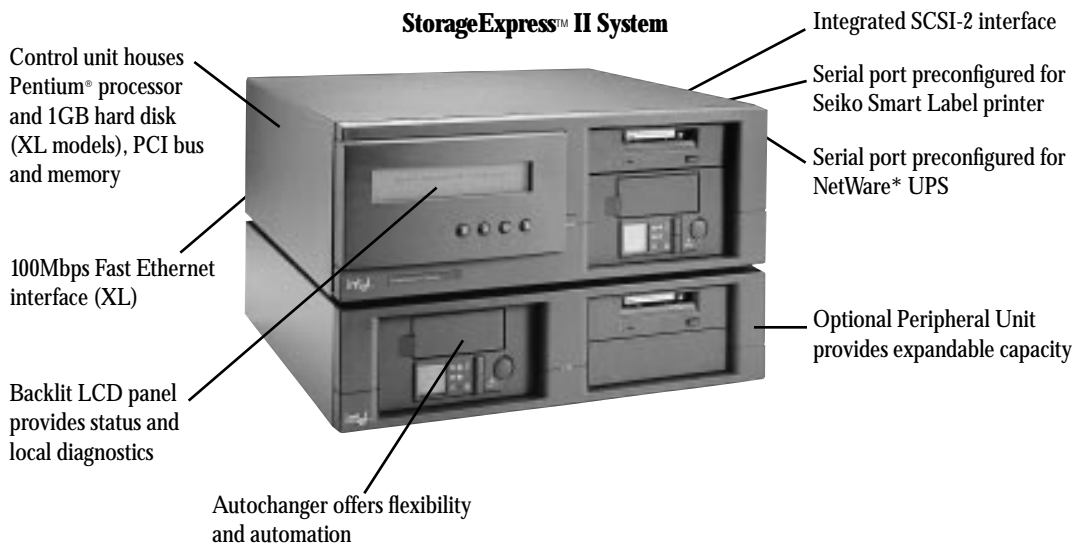
Restoring lost or corrupted data is quick and efficient with the unique File Tracker database and Quick File Access. File Tracker tracks files by name and lets you choose which volumes, directories or files to restore. You also can restore data directly to any DOS, Windows, Windows NT, UNIX or IBM OS/2\* workstation.

## Scalable and flexible

Scalability is key to managing network growth within today's confines of tight capital expenditures. The StorageExpress system offers a high degree of scalability through various expansion options, including autochangers for maximum flexibility and automation. Base models support either DAT or 8mm tape in varying drive capacities from 4GB to 48GB. Capacity can be expanded with optional tape drive upgrades to a maximum tape capacity of 112GB. Adding more StorageExpress systems is another easy option, since they can all be configured and controlled from one Central Console at your desktop.



*Streamlined backup option and autochanger drive make backup completely automated.*



**Workstation backup support**

- DOS version 3.3 or greater
- Windows\* version 3.1 or greater
- OS/2\* version 1.3 or greater
- Windows NT\*
- UNIX\* workstations (SCO UNIX\*, SUN Solaris\*, IBM AIX\*, HP/UX\*, and Novell UnixWare\*)

**File server backup support**

- NetWare\* file servers, including NDS
- DOS, Windows, OS/2\*, Macintosh\* files and NFS stored in Name Spaces when using SMS

**Backup data formats**

**Name-Space support (file servers)**

- DOS, Macintosh\*
- UNIX\* NFS, OS/2\* HP FS – requires Novell's TSA on file server being backed up

- NetWare\* NDS – requires Novell's NDS TSA on file server

**Central Console workstation requirements**

- Intel386™ SX CPU-based system or higher
- DOS 5.0 or later
- Windows\* 3.1 or later
- Windows configured for NetWare\* support
- 10MB free disk space
- 8MB of RAM (higher if used with ManageWise or LANDesk® Management Suite )
- NETX.COM 3.26 or later, or VLM 1.10 or later
- IPX.COM 3.1, IPXODI.COM 1.2 or later, LSL.COM 1.21 or later

**Awards**

- LAN Magazine, *Product of the Year (1993)*
- PC Computing, *MVP Award Finalist (1993)*
- PC User (U.K.), *Silver Award (1993)*
- InfoWorld, *Top-Rated Backup Server (1993)*

**NOS Support**

- NetWare\* – 2.2 or greater, 3.11 or greater, 4.0/4.1 bindery services and NDS
- UNIX\* – Solaris\* 1.x, 2.x, IBM AIX\*, HP/UX\*, SCO, UnixWare\*
- Windows NT\*

**Related Products**

- LANDesk® Management Suite
- LANDesk Manager
- EtherExpress™ PRO/100 LAN Adapters

**Base Models**

Product	Order Number
StorageExpress™ II System, Model ELD II – Entry Level DAT System	SMS02310
StorageExpress II System, Model XLD II – Multi Server DAT System	SMS02400
StorageExpress II System, Model XLC II – Autochanger System	SMS02710
StorageExpress II System, Model XLE II – Multi Server 8mm System	SMS02610

