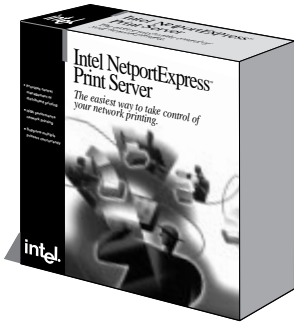


Intel NetportExpress™ XL and EL Print Servers

The easiest way to take control of your network printing



Features at a glance

- **NEW!** Now with NetWare* 4.1 native NDS and Windows NT* support
- Simultaneous multi-NOS and multi-protocol support (XL)
- High-speed printing throughput of up to 180KBps (XL)
- Connect up to three printers anywhere on your network
- Centralized management and control of distributed printing with Windows* NPMManager software
- Snaps in to LANDesk® Management Suite, and Novell's ManageWise* and NMS*
- Supports any SNMP console
- Flash memory for quick and easy software-only upgrades

Now it's simple to add printers anywhere on your network and manage them with the kind of centralized control that makes LAN administration easy. With NetportExpress™ Print Servers, you're able to connect printers directly to the network wire. That means you can locate printers anywhere you want to, not just near a file server. Its small, integrated design makes it easy to connect printers with no disruption to the network and makes printing extremely reliable. It's even designed to dynamically reattach if the file server goes down.

The NetportExpress Print Server is available in two models: the EL and the XL. The EL is a high performance NetWare* only print server that supports two parallel printers. The XL is a higher performance model that supports up to three printers. The XL can also simultaneously support multiple protocols and network operating systems on all connected printers.

Simultaneous multiple protocol support

The XL model supports all major network operating systems and protocols. There is no need to purchase additional hardware or software upgrades. With NetportExpress it is all in one box. The XL model supports the following:

- NetWare, including native NDS support
- Windows NT* (available August 1995)
- UNIX* (SCO, SunOS*, Solaris*, UnixWare*, HP/UX, IBM AIX*)
- LAN Manager*
- LAN Server*
- Appletalk*

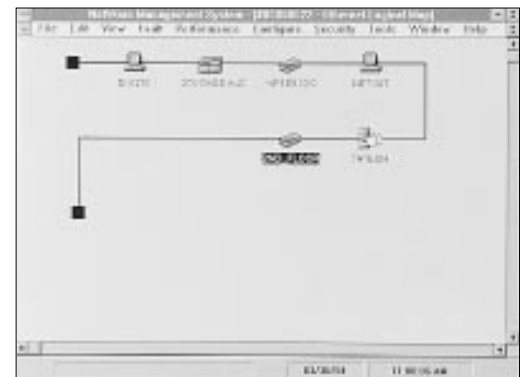
In addition, there is no need to run VAPs, NLMs or EXEs on your network with NetportExpress as your dedicated print server.

High-performance printing

You and your users will appreciate the performance of NetportExpress Print Servers. XL models feature high-speed parallel ports that provide performance up to 180KBps. This is equal to or greater than the internal bus speeds of high-speed laser printers. The EL model provides throughput up to 80KBps. Both XL and EL models support 1000-user versions of NetWare.



Set up, reconfigure, monitor and upgrade all Intel print servers in logical domains through the Windows NPMManager console.*



Manage NetportExpress™ Print Servers by integrating with LANDesk® Management Suite, Novell's ManageWise or NetWare Management System* (NMS).*



	NetportExpress™ XL Print Server	NetportExpress EL Print Server
Printers Supported	All brands & models	All brands & models
Simultaneous Printers	3	2
Protocols Supported	IPX/SPX, AppleTalk*, TCP/IP, NET BIOS	IPX/SPX
Performance	Up to 180KBps	Up to 80KBps
Upgradeability	Flash Memory Remote Boot Load S/W	Flash Memory Remote Boot Load S/W
Ports	2 parallel/1 serial	2 parallel
Parallel Ports	IEEE 1284, high-speed, bi-directional	IEEE 1284, high-speed, bi-directional
Serial Port Speed	57.6Kbps	None
Print Server Password	Yes	Yes
NetWare* Versions Supported	NetWare 2.2, 3.12, 4.1 (native NDS support)	NetWare 2.2, 3.11, 3.12, 4.1 (native NDS support)
Other NOS Support	<ul style="list-style-type: none"> ■ UNIX* (SCO, SunOS*, Solaris*, UnixWare*, HP/UX, IBM AIX*) ■ LAN Manager*, LAN Server* <ul style="list-style-type: none"> ■ AppleTalk* ■ Windows NT* (available August 1995) 	None
Frame Types	802.2, 802.3, Type II, SNAP	802.2, 802.3 Type II, SNAP
Token Ring Support	4/16Mbps on STP 4/16Mbps on STP	4/16Mbps on STP 4/16Mbps on STP

Product	Order Number
NetportExpress™ XL Print Server (Ethernet BNC/TPE)	PCLA2131
NetportExpress XL Print Server (Token Ring STP/UTP)	PCLA2331
NetportExpress EL Print Server (Ethernet BNC/TPE)	PCLA2141
NetportExpress EL Print Server (Token Ring STP/UTP)	PCLA2341

FaxBack* Document	Document Number
NetportExpress™ XL/EL Print Server Technical Overview	6114
NetportExpress XL/EL Print Server Q&A	6124
NetPort® and NetportExpress XL/EL Print Server: Current Software Versions	6041
NetportExpress XL/EL Print Server Trade Up Program (to November 30, 1995)	9929
NetportExpress XL/EL European Sales Programs	6030
Solutions For Reliable, Cost-Effective Printing	9005
Troubleshooting Notes From Technical Support	6061
What's New In NetportExpress	8707

Call 800-525-3019 or 503-264-6835 to order FaxBack documents.

* Third party trademarks are the property of their respective owners.

Network Topology Support

Ethernet models

- Autosenses between 10BASE-T (TPE) and 10BASE-2 (BNC) connectors

- Supports 802.2, 802.3, Type II and SNAP frame types

Token Ring models

- Autosenses between Token Ring STP (Type 1) and UTP (Type 3) connectors

- Supports both 4Mbps and 16Mbps ring speeds

- Supports source routing

- Local Administration of Addresses (LAA)



Made from 100%
Recycled Material

C658.05

Intel NetportExpress™ XL and EL Print Servers

Awards

- Computer Reseller News, *Editors' Choice Award, Print Servers (April 1, 1995)*



- Network Computing, *Editors' Choice Award, Print Servers (April 1, 1995)*
- LAN Times, *Runner-up, Readers Choice Award, Print Servers (April 10, 1995)*



- LAN Computing/Internetwork Magazine, *Standards Achievement Award (1994)*
- 97% Customer Satisfaction Rating, *MDC (1994)*
- #1 Market Leader for External Print Servers, *IDC (1993)*

Related Products

- LANDesk® Management Suite
- LANDesk Manager
- Novell ManageWise*
- Novell NMS

Allows management in logical domains

Because print servers should provide more than just connectivity, NetportExpress Print Servers include NPManger for Windows*, a centralized management utility that makes installation a snap and lets you monitor and control the print servers from any PC on the network. NPManger makes our print servers a perfect solution for environments with many printers with easy-to-define domains or logical groupings. Each domain of NetportExpress Print Servers can be viewed and managed separately. For LAN administrators with growing networks, it's the ultimate in printer management.

Integrates with enterprise management consoles

For networks managed with Novell's ManageWise* or NetWare Management System* (NMS), NetportExpress Print Servers and the NPManger application snap in to ManageWise and NMS. Both XL and EL print servers will show up with an icon and alias in the ManageWise and NMS network map. By clicking on the icon, the user will jump right into NPManger with the selected NetportExpress print server highlighted and ready for status or modification. And with SNMP support in the XL, its MIB can be browsed from any enterprise-wide, SNMP-based management console. NetportExpress also sends alerts to LANDesk® Management Suite 2.0 Alert Management System for proactive management of your printing environment.

Updates in a flash

Built-in Intel Flash Memory allows fast, simple software upgrades over the LAN. Change configuration or update your NetportExpress Print Servers easily from NPManger. As new feature enhancements or new versions of network operating systems become available, you won't have to open individual units and install additional memory. You'll be able to take care of updating in minutes – without leaving your desk.

Printing utilities for enhanced control

Two valuable printing utilities are available free to registered owners to give you even more control of network printing. Intel LANQView provides NetWare queue management for streamlining the printing process. You can view and reorder print jobs, managing up to three queues simultaneously, and even move jobs between queues across file servers. Intel LANPrint lets users select available printers from a list you define, and also configure their jobs, without having to exit their DOS or Windows applications. It's a convenience every user will appreciate.

NetportExpress trade-up program

If you are currently using a NetPort® or NetPort II print server – or another print server brand – Intel offers a reduced price upgrade to the latest in printing technology: NetportExpress. For more information, see FaxBack* document 9929 (offer ends 11/30/95).

The XL model is designed to simultaneously support multiple protocols on all three ports and requires either a NetWare, Windows NT, LAN Manager or LAN Server file server for remote boot loading.

- IPX – NetWare (2.2, 3.x, 4.1 with native NDS support)
- Windows NT (available August 1995)
- TCP/IP – UNIX (Sun OS,SCO, Solaris, HP/UX, UnixWare, IBM AIX)
- EtherTalk, TokenTalk – AppleTalk
- NET BIOS – (MS LAN Manager 2.x on MS OS/2* 1.2, IBM LAN Server 3.x)

NPManager for Windows workstation requirements

- Intel386™ SX or DX CPU-based system or higher
- DOS 5.0 or later
- Windows 3.1 or 3.11
- Windows configured for NetWare or NET BIOS Support
- 4MB of RAM (higher if used with ManageWise, NMS, LANdesk Management Suite or LANdesk Manager)
- NETX.COM 3.26 or later, or VLM 1.10 or later
- IPX.COM 3.1, IPXODI.COM 1.2 or later, LSL.COM 1.21 or later



Port Specifications

Two bi-directional parallel ports

- 25-pin female connectors (IEEE 1284-compliant)
- XL throughput up to 180KBps; EL throughput up to 80KBps

■ Centronics compatible

One standard RS-232C serial port (XL model only)

- Bi-directional 9-pin male connector

- Throughput up to 57.6Kbps

Other Specifications

- Dimensions: 8.25 x 4.63 x 1.5 inches
- Power supply: Switchable 100 250V, 50-60Hz 0.9A
- RF Emissions Compliance: FCC Class A, VDE Class A

