

Intel LANDesk® Management Suite v2.01

The first integrated desktop management suite for customizable control of the PC LAN

Intel's LANDesk® Management Suite provides LAN administrators with a comprehensive desktop management system to deploy and manage servers and workstations on large LANs. A set of well-integrated applications, LANDesk Management Suite greatly facilitates software distribution and provides effective realtime software metering, inventory, remote control functions and alerting/ reporting – all from a common data base.

From predefined or custom macros that automate the management process, to fully automated software distribution, LANDesk Management Suite lets you manage both simple and complex tasks from a single console. It is the ultimate desktop management product that provides centralized control of your networked PCs and servers.

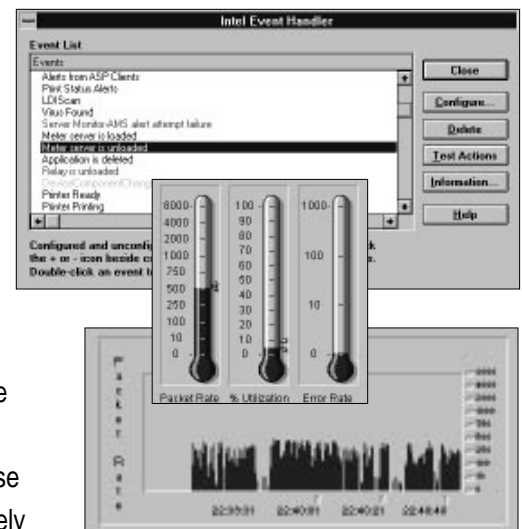
Complete desktop management

A single console interface provides fast, remote access to any network workstation and an immediate link to each of the applications in the suite. Because the applications are fully integrated, they work together smoothly and efficiently.

■ **Software Distribution and Metering** – Software can be automatically distributed using lists created from the inventory database. You can use either push or pull mechanisms for installation and also simultaneously de-install without an additional TSR. Real-time software metering ensures accurate software asset management and accounting, including sharing licenses between servers on WANs.

■ **Server-Based Event Handling** – An NLM-based service tracks critical alerts, even on remote servers, and passes them to a centralized server. With their automated response capability, LANDesk Management Suite macros immediately trigger scripts to provide intelligent responses. Plus, LANDesk Management Suite provides an extensive audit trail of alerts and responses so you always know what's happened. With its SNMP traps, it can also trigger event management for SNMP-compatible applications.

- Complete desktop management, including servers and workstations, for LAN administrators of large organizations
- Fully integrated applications: software distribution, metering, inventory and server-based alert/reporting
- Snaps into leading Windows*-based management consoles



NLM service tracks critical alerts and provides 24-hour centralized workgroup capabilities. The LANDesk® Management Suite software sets thresholds, then automatically triggers alarms when thresholds are reached.



Intel LANDesk® Management Suite v2.0

■ **DMI Control Panel** – Intel helped to found the Desktop Management Task Force (DMTF) in response to growing customer demand for manageability in PC products. The LANDesk® Management Suite incorporates the DMTF's Desktop Management Interface (DMI), allowing network managers to configure DMI-enabled components without having to learn each vendor's configuration program.

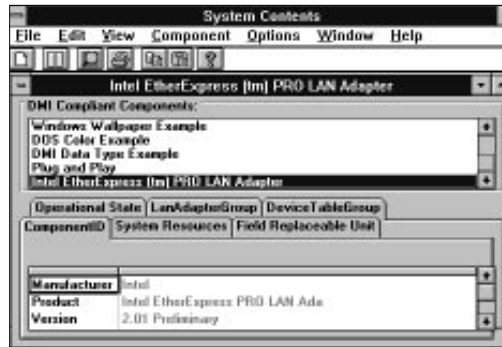
■ **Integrated Reporting** – You can combine historical reports with real-time information for print usage, wire activity, server statistics, alerting services and more. These customized reports can be automatically generated, and help document the problems you've fixed for future reference.

Focus on tasks, not technology

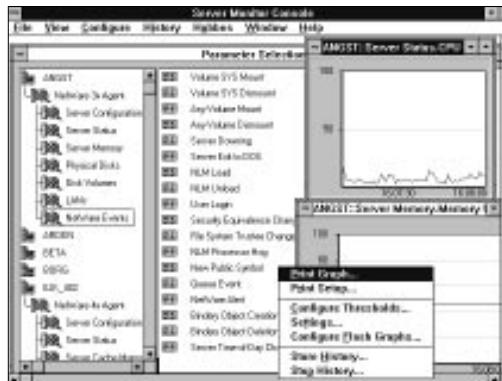
The LANDesk Management Suite will change the way you think about controlling your network. With its task-oriented environment, you structure your activities around resources and operations, not around the tools used to manage them.

You can:

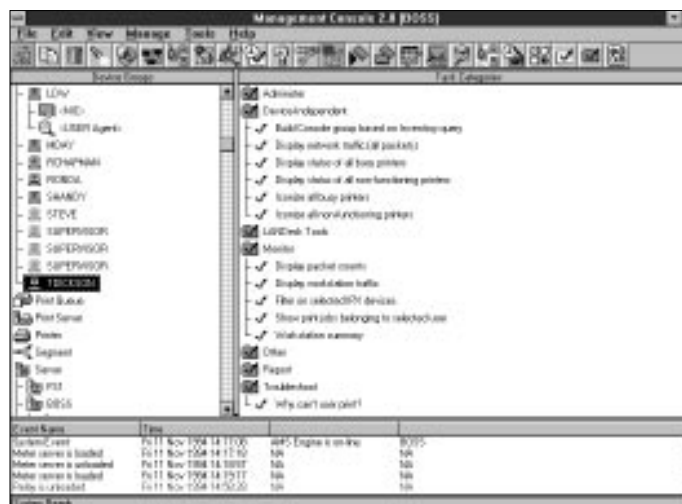
- Customize LANDesk Management Suite to reflect how your organization works.
- Create groups around common user problems and continue to make changes as your needs evolve.
- Reduce learning curves for new administrators with scripts that can be either informational or operational.
- Give anyone direct access to a management tool.



Configure DMI-enabled components within computers without having to locate or learn each vendor's configuration program.



Track vital statistics of NetWare® servers on your PC LAN. Get instant notifications of critical events with central alerting.



Customize your LANDesk® Management Suite environment with powerful macro-like scripting capabilities. Capture and organize common tasks and save them as standard management practices, easily initiated from the task list.

A complete family of programs

The following applications form the LANDesk® Management Suite:

- Software Distribution
- Software Metering
- Inventory
- Remote Control
- Printer Manager
- Server Monitor
- Traffic Monitor
- Virus Scan
- Performance Monitor
- Queue Monitor
- Server Status
- Report Tool
- Management Console



*Third party trademarks are the property of their respective owners.

Intel LANDesk® Management Suite v2.0

LANDesk® Management Suite also allows network managers to capture and organize solutions to common LAN problems and save those solutions as standard management practices.

Build custom macros to automate management processes

Capture and automate your best management practices so that tasks can easily be handled by all levels of administrators, from expert to novice. Use predefined macros in the LANDesk Management Suite software to perform the most common tasks, or create custom macros for your most complex or unique tasks. Next time similar problems arise, you simply use the macros to automatically initiate the problem-solving sequence. Help Desk LAN administrators will automatically know what steps to take by using your scripted processes.

Integration makes your job easier

Unlike individual or stand-alone network management utilities, LANDesk Management Suite is a fully integrated suite of robust management applications. A common interface, OLE data links between applications and common databases work together to make your job easier. For example, you can build a software distribution list from your inventory list, then use the same inventory list to choose, diagnose and remotely control workstations. Any new workstation information is automatically discovered and passed to lists and applications for inventory, distribution, metering and remote control. With LANDesk Management Suite, lists and applications share a common database and alert handling, for complete integration of tasks from a single interface.



Integrated desktop management provides quick, remote access to critical user information (including inventory) from any network workstation and creates an immediate link for software distribution. Use new DMI support to get quick access to desktop component management information.



Use LANDesk® Management Suite to automatically generate software distribution scripts from the inventory database, then choose to distribute software with either push or pull mechanisms. De-install packages are created simultaneously.



Single-console control of software metering and license sharing, including suites, for DOS/Windows® applications launched from servers.

Awards

- PC Magazine, *Editors' Choice Award*, (November 21, 1995)



- LAN Times, *Runner-up, Readers' Choice Award*, *LAN Management* (April 10, 1995)



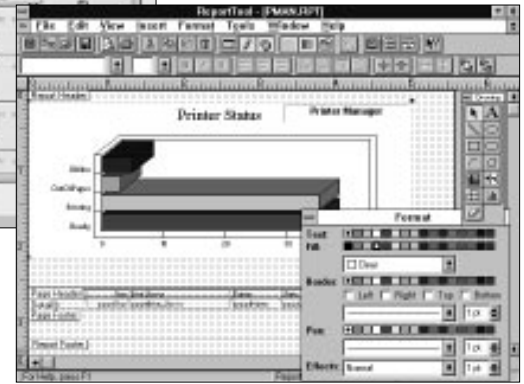
*Third party trademarks are the property of their respective owners.



LANDesk® Management Suite adds to the capabilities of Novell ManageWise* and snaps into leading consoles such as Novell NMS, HP OpenView* for Windows*, DEC ManageWorks*, Bay Networks Optivity* and Dell SafeSite*. It provides trap generation to SNMP management consoles on any platform.



Enhance the native reporting capabilities of individual tools with the LANDesk® Management Suite's powerful data export feature and flexible report generator.



Optional palette provides quick access to individual applications.

Minimum system requirements

Management server

- Novell NetWare* 3.11, 3.12, 4.02 or 4.1
- Supports NDS without bindery services
- 12MB of RAM
- 70MB of free disk space
- CLIB version 3.11d or greater
- BTREIVE version 6.10c or greater

- 10MB of local hard disk space
- Network adapter or interface card with an ODI device driver capable of operating in promiscuous mode
- MS-DOS* 5.0 or later
- Microsoft Windows 3.1x, running in enhanced mode and configured for NetWare
- Novell's WINUP9 Windows Update Kit for VLM and NETX
- LSL.COM version 2.02 or later

Management workstation

- 33 MHz Intel386™ processor-based system or better
- VGA or Super VGA graphics adapter and monitor
- Mouse supported by Windows* 3.1x
- 12MB of system RAM

Other servers in your domain

- Novell NetWare 3.11, 3.12, 4.02 or 4.1
- Supports NDS without bindery services
- 5MB of free disk space
- 550KB of system RAM for Management Tool NLMs

Software Probe stations

- 25 MHz Intel486™ processor-based system or greater
- 2MB of RAM
- 20MB of local hard disk space for Performance Monitor's logs
- Network adapter or interface card with an ODI device driver capable of operating in promiscuous mode

Client workstations

- DOS or Windows workstations
- 12KB of system RAM available for optional TSRs
- Novell's WINUP9 Windows Update Kit for VLM and NETX
- Macintosh* workstation running System 7 or System 6 (inventory only)
- OS/2* workstation running OS/2 v1.3 or 2.x (inventory only)

Related Products

- LANDesk® AlertVIEW® Application Manager
- LANDesk Response
- LANDesk SNMP Gateway
- LANDesk Traffic Analyst
- LANDesk Virus Protect
- StorageExpress™ System
- EtherExpress™ Flash Adapter
- NetportExpress™ Print Server

Product		Order Number	Upgrade Order Number
LANDesk® Management Suite v2.01	5-node license	SLAN1500-5v201	SLAN1500-5Uv201
	10-node license	SLAN1500-10v201	SLAN1500-10Uv201
	100-node license	SLAN1500-1Hv201	SLAN1500-1HUv201
	1000-node license	SLAN1500-1Kv201	SLAN1500-1KUv201

FaxBack* Document	Number
LANDesk® Management Suite v2.01 Architecture and Implementation	5603

Call 800-525-3019 or 503-264-6835 to order FaxBack documents.

Product Information

World Wide Web	http://www.intel.com	Japan	+81-298-47-1841
U.S. and Canada	800-538-3373 or 503-264-7354	Hong Kong, Taiwan, Korea, Singapore and ASEAN	+65-735-3811
Europe	+44 1793-431155	Australia	+61-2-937-5800

*Third party trademarks are the property of their respective owners.

