

Introduction to AppMover



lomega makes your life easier with software that helps you get stuff done. The Tools software package is an integrated package of useful utilities for your Zip drives and Zip disks. Included with this package are programs and utilities developed by lomega to organize, store, and protect your stuff. lomega's AppMover is a limited version of Uninstaller by MicroHelp, Inc. With it, you can move applications from one drive or directory to another, and AppMover will automatically change all linked files so you can run them from the new location.

Getting Started

To move an application, or its associated shortcut, from an existing location to a new location:

1. Click on the application's icon or its shortcut.

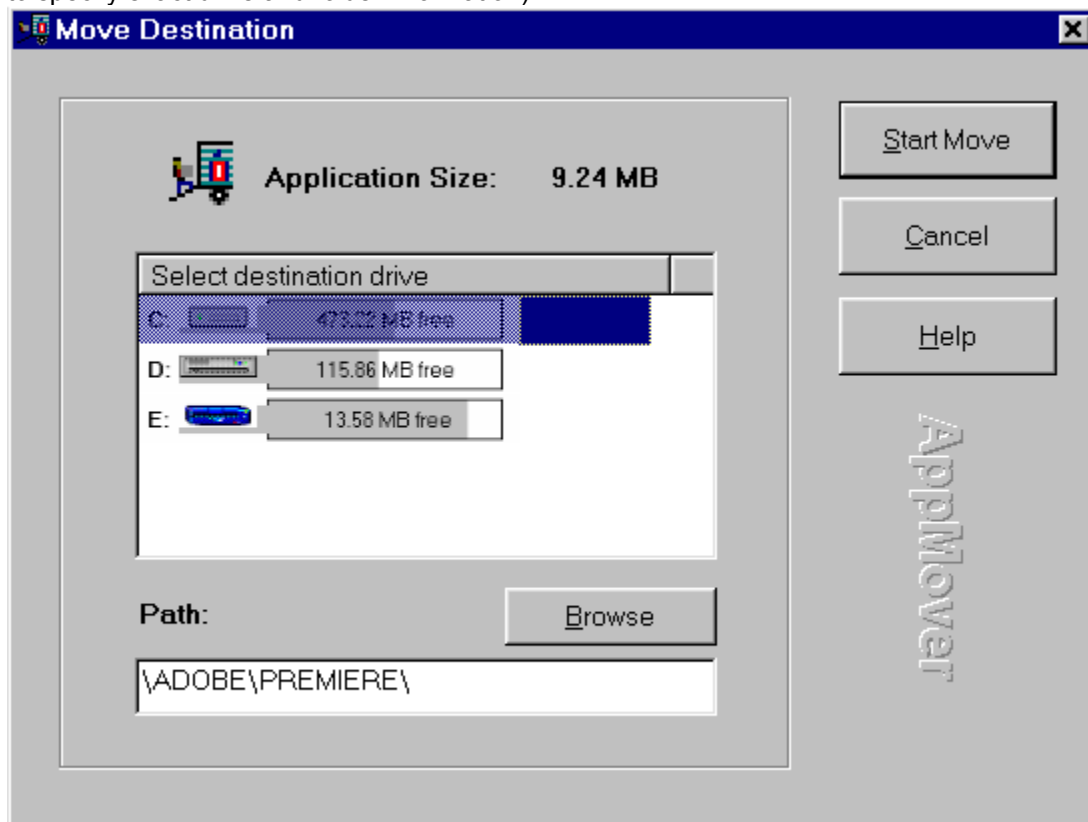


NOTE:

If you do not see the specific application you want to move, press the Browse button to search for other applications on any drive connected to your system.



2. Click on the Move button  or select [Move Application](#) from the menu bar.
3. Specify the location where you want the application or its shortcut moved (use the Browse button to specify exact drive and folder information):



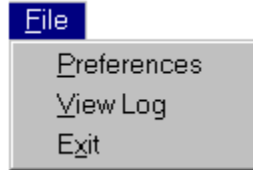
4. Press [Start Move](#).
5. When the Move has been completed, a [Move Progress](#) box will appear giving you the option to Run the Application you have just moved, Undo the move you just performed, or exit to AppMover's main screen.

AppMover Main Dialog Screen

The main dialog is the hub of the AppMover interface. The main dialog is comprised of three primary components: the [file menu](#), the [toolbar](#), and the [list view](#).

File Menu

The File menu provides three options which are enabled at all times except when a Move is in progress:



Preferences

This menu item brings up the Preferences screen and allows you to select the Move Reporting Options. The Move Reporting Options let you specify where you want a Move job overview log file printed or stored by selecting [Output to Printer](#), or [Output to File](#).

View Log

Selection of this item will execute the application currently associated with opening .TXT files and load the current job's log file into that application for viewing. (Disabled if no report exists.)

Exit

Selection of this item will end the program. (Enabled at all times unless a Move is in progress.)

Tools

The Tools menu provides three options:



The Move Application

Enabled once an application has been selected in the list view. Selecting this item will begin the Move process by bringing up the 'Move Destination' dialog.

Browse for Application / Show Applications in Start Menu

This menu item toggles between two states and should always be enabled. Selecting [Browse for Application](#) fills the list view with a list of the non-floppy drives on your system. From here, you can navigate through your system in a style similar to *My Computer* or the *Windows Explorer*. Selecting [Show Applications in Start Menu](#) (the default state) shows the folders and items in the Windows Start Menu *Programs* directory.

The Toolbar

The toolbar allows you to easily run AppMover's different functions:



Move the highlighted application

Identical in function to the [Move Application](#) menu item, this button runs AppMover's Move function on the application you currently have selected.



Browse for application

This button is identical in function to the [Browse for Application](#) menu item. When either the [Browse for Application](#) menu item or button is selected, this button is replaced by the [Show applications in Start Menu](#) button shown below.



Show applications in Start Menu

This button is identical in function to the [Show Applications in Start Menu](#) item. When either the [Show Applications in Start Menu](#) item or button is selected, this button is replaced by the [Browse for application](#) button shown above.



Here's your chance!

This button has no corollary in the menu structure and is always enabled. When selected, you will be presented with a dialog giving you information on the UnInstaller 3.0/3.5 upgrade offer.



Help

Similar in function to the [Help-Contents](#) menu item, this button, when selected, brings up the help file using the topic for the current dialog.



Exit AppMover

Identical in function to the [Exit](#) menu item, this button exits the AppMover application and is always enabled unless a Move job is in process.

List Views

The [List View](#) is, in many ways, the hub of AppMover's main dialog as it provides the ability to select which application(s) you want to Move. There are four main components of the list view, as follows:

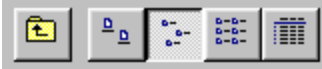
The List: Show Applications in Start Menu

The list shows those applications (either shortcut or executable) and folders that exist in the currently selected folder. Each is represented by an icon. If available, the application's name instead of the file name is displayed.

- You can double-click a folder (or press [Enter](#) on the keyboard while a folder is selected) to open that folder.
- You may also single click an application and then select a menu item or toolbar button that you wish to perform upon the application in question.
- Double-clicking an application will begin the Move process as if you had single-clicked it and then selected the [Move Application](#) menu item.
- Right-clicking on the list will present a pop-up menu with the same items as the Tools menu.
- Selecting an item (folder or application) will enable and disable a number of items on the main dialog as mentioned under the [Menu](#) and [Toolbar](#) sections. The icon used while using [Show Applications in Start Menu](#) includes a Windows 3.x group picture while the icon used for [Browse for Application](#) does not.

The Mini-Toolbar

Identical in nature to the same items in the *My Computer* or the *Windows Explorer* dialog, this toolbar is for the *List View* and contains five buttons.



Up One Level

- Changes the items shown in the list view to show the parent of the current folder.
- Using [Browse for Application](#) and current view is the equivalent to *My Computer* or the *Windows Explorer's* available drives view.
- Using [Show Applications in Start Menu](#) and current directory is the equivalent of the Windows Start Menu Programs directory.



Large Icons

Shows 32x32 icons representing folders and applications - arranged left to right.



Small Icons

Shows 16x16 icons representing folders and applications - arranged left to right.



List

Shows 16x16 icons representing folders and applications - arranged top to bottom.



Details

Shows 16x16 icons representing folders and applications--shown in a two column list, arranged top to bottom.

The Folder Combo

The Folder Combo shows the name of the current folder being displayed in the [List View](#). You can drop down the combo to select any of the folders parent to this one. Each level down that you go, the current folder indents five spaces.

The Currently Selected Application

If an application has been selected in the [List View](#), the full file name (with path) is displayed here. If a drive or directory is currently selected, the File to move is shown as blank.

Move Complete!

The Move Complete dialog box appears when AppMover has completed a Move. This screen allows you to:

Run App: Run the application you have moved from its new location.

Undo Move: Places the application back in its original location as if you had never moved it.

Done: Exits the dialog box and takes you back to AppMover's main screen.

Why Should I Use AppMover

Using AppMover, unlike the *My Computer* or the *Windows Explorer*, can move applications from one drive or directory to another and automatically change all linked files so you can run them from the new location. AppMover automatically updates your system files and shortcuts so you can run a moved application without worrying about file corruption, or losing needed file extensions.

