

Traylcon

Traylcon is a Windows 95/NT 32-bit program that was developed to provide one-click access to programs. Using Traylcon, you can add icons to the Windows 95/NT system tray to quickly launch your favorite programs.

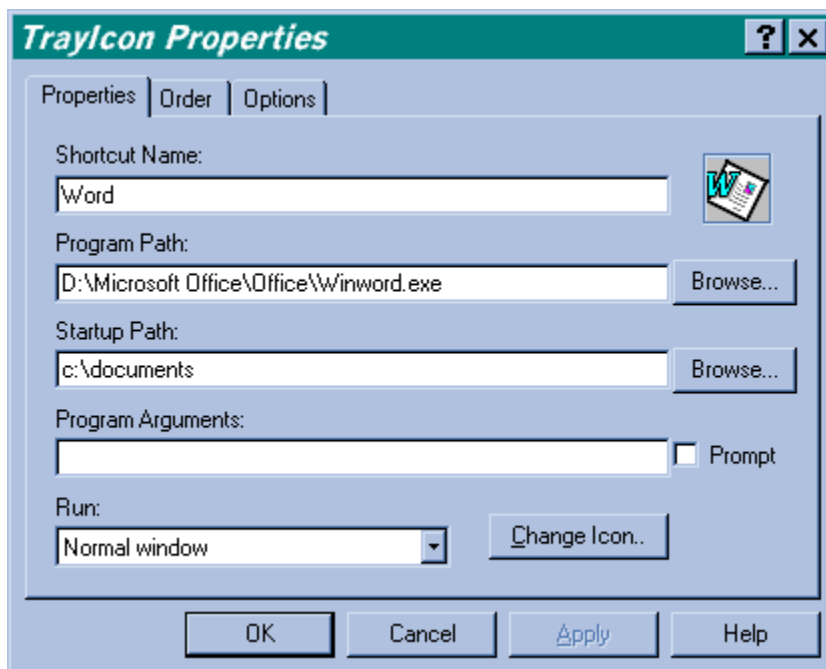
Traylcon is a product of:

MetaProducts Corporation
P.O. Box 21352
Columbus, OH 43221
E-Mail: tech@metaproducts.com
www.metaproducts.com/traylcon

This is not free software. You may evaluate this software for 30 days, but after that, you must register it or be in violation of the license. You can register Traylcon by sending \$20 to the above address.

Introduction to Traylcon for Windows 95/NT

The first time you run Traylcon, you will be asked to create an Application Icon or Dial-Up Networking icon that will appear in the system tray. The indented area which appears at the right or the lower part of the taskbar (depending on where on the screen you have the taskbar oriented) is referred to as the "system tray." The two fields that are required for an Application Icon are Shortcut Name and Program Path. The OK and Apply buttons will be disabled (grayed out) until these two fields are filled in. Traylcon now saves program settings in the system registry. If you have used Traylcon before, Traylcon will transfer your existing data from the TRAYICON.INI file to the system registry, then remove the TRAYICON.INI file.



Shortcut Name

Enter a name for this icon. This name will appear as a "tooltip" when the mouse cursor is over the icon in the system tray: The Shortcut Name must be unique for each icon. If the name is not unique, the OK and Apply buttons will be disabled.

Program Path

Enter the full path for the file you want executed for this icon. If you want to search for the executable, click on the Browse button. The Program Path will also accept documents that have an association. For example, if you input C:\Documents\Resume.doc into the program path field and DOC files are associated with Microsoft Word, when you left click on the icon, Microsoft Word will be executed and C:\Documents\Resume.doc will be retrieved.

Startup Path

Enter the path where you want the program to start in. TrayIcon will make this directory the current directory before running the program specified in the Program Path field. Some programs such as WinCIM require this.

Program Arguments

Enter any data you want passed to the executable upon startup. If you want to enter this data manually when the program is started, click the Prompt checkbox to put a check in it.

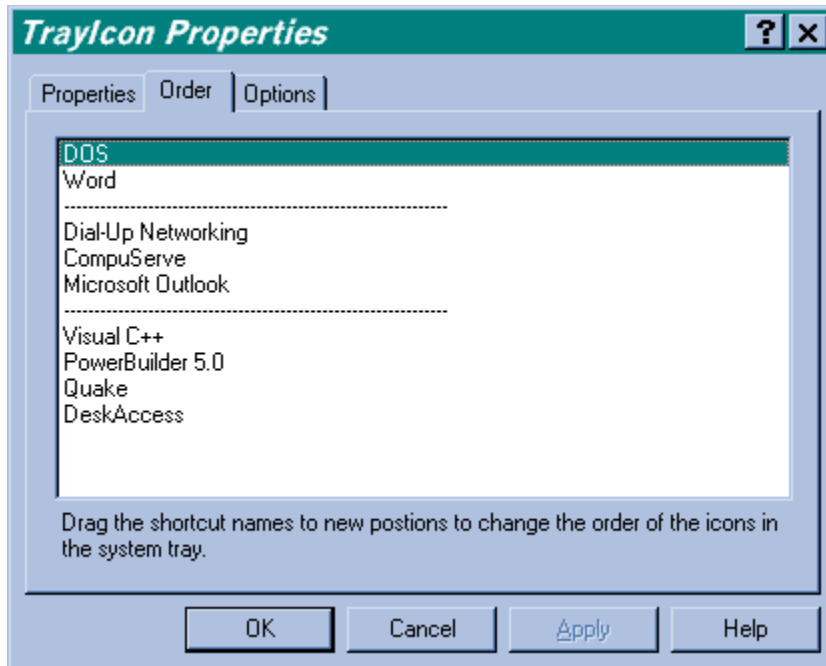
Run

This is the style you want the program to initially be in. The choices are Normal, Maximized or Minimized.

Change Icon

If you want to select a custom icon for the TrayIcon, click this button and select an icon from an icon file, executable or DLL.

Once you have TrayIcon icons displayed in your system tray, you can left-click on the icon to run the program, or right-click on an icon to add new icons and separators, delete the existing icon or change properties of the existing icon. You can also use the sort screen to change the order the icons appear in the system tray.



For best results, create a shortcut for the TrayIcons program in your Windows startup group so it will load every time Windows starts.

TrayIcon

TrayIcon is a Windows 95/NT 32-bit program that was developed to provide one-click access to programs. Using TrayIcon, you can add icons to the Windows 95/NT system tray to quickly launch your favorite programs.

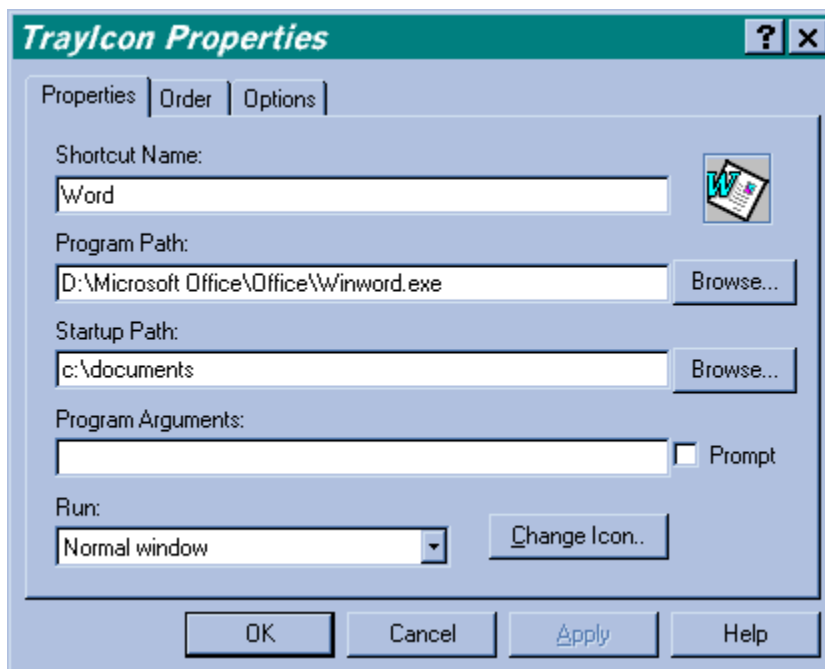
TrayIcon is a product of:

MetaProducts Corporation
P.O. Box 21352
Columbus, OH 43221
E-Mail: tech@metaproducts.com
www.metaproducts.com/trayicon

This is not free software. You may evaluate this software for 30 days, but after that, you must register it or be in violation of the license. You can register TrayIcon by sending \$20 to the above address.

Introduction to TrayIcon for Windows 95/NT

The first time you run TrayIcon, you will be asked to create an Application Icon or Dial-Up Networking icon that will appear in the system tray. The indented area which appears at the right or the lower part of the taskbar (depending on where on the screen you have the taskbar oriented) is referred to as the "system tray." The two fields that are required for an Application Icon are Shortcut Name and Program Path. The OK and Apply buttons will be disabled (grayed out) until these two fields are filled in. TrayIcon now saves program settings in the system registry. If you have used TrayIcon before, TrayIcon will transfer your existing data from the TRAYICON.INI file to the system registry, then remove the TRAYICON.INI file.



Shortcut Name

Enter a name for this icon. This name will appear as a "tooltip" when the mouse

cursor is over the icon in the system tray: The Shortcut Name must be unique for each icon. If the name is not unique, the OK and Apply buttons will be disabled.

Program Path

Enter the full path for the file you want executed for this icon. If you want to search for the executable, click on the Browse button. The Program Path will also accept documents that have an association. For example, if you input C:\Documents\Resume.doc into the program path field and DOC files are associated with Microsoft Word, when you left click on the icon, Microsoft Word will be executed and C:\Documents\Resume.doc will be retrieved.

Startup Path

Enter the path where you want the program to start in. TrayIcon will make this directory the current directory before running the program specified in the Program Path field. Some programs such as WinCIM require this.

Program Arguments

Enter any data you want passed to the executable upon startup. If you want to enter this data manually when the program is started, click the Prompt checkbox to put a check in it.

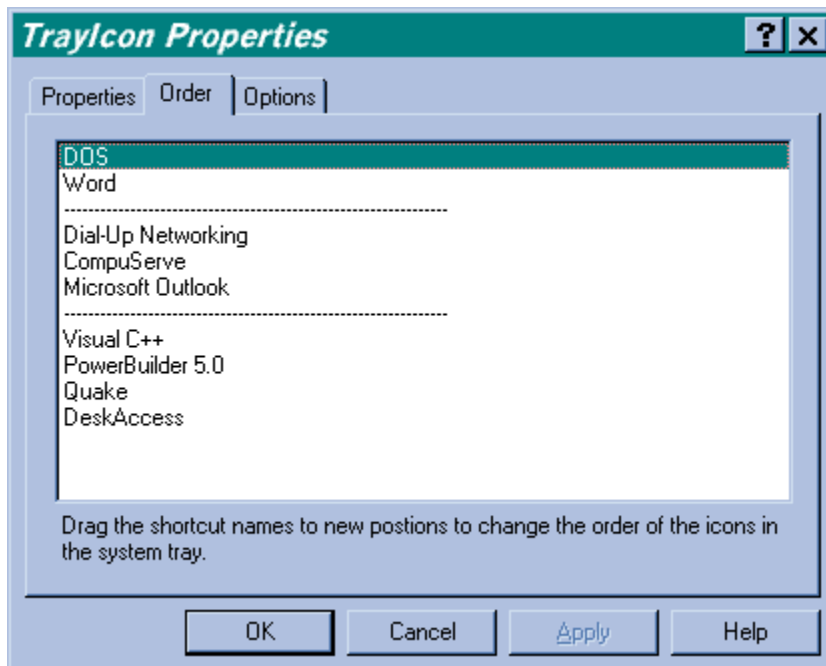
Run

This is the style you want the program to initially be in. The choices are Normal, Maximized or Minimized.

Change Icon

If you want to select a custom icon for the TrayIcon, click this button and select an icon from an icon file, executable or DLL.

Once you have TrayIcon icons displayed in your system tray, you can left-click on the icon to run the program, or right-click on an icon to add new icons and separators, delete the existing icon or change properties of the existing icon. You can also use the sort screen to change the order the icons appear in the system tray.



For best results, create a shortcut for the TrayIcons program in your Windows startup group so it will load every time Windows starts.

The **Filename** is the path of the icon file, executable or DLL that you want to select an icon from.

Drag a shortcut name in the listbox to a new position to change the order of the icon in the system tray.

Select **Application Icon** to create an icon to launch an application such as Explorer, Microsoft Word or WordPad.

Select **Dial-Up Networking Icon** to create a special icon that you can use to quickly launch any of your Dial-Up Networking connections.

Select this option if you want to exit TrayIcon.

Pressing this **Browse** button displays an Explorer dialog that lets you select a program file to be launched by the system tray icon that will be created.

Pressing this **Browse** button displays an Explorer dialog that lets you select a path that will become the current path when you launch this program from the system tray icon.

Pressing the **Change Icon** button displays a dialog that lets you select an icon that will be displayed in the system tray.

The text you enter in the **Shortcut Name** field will become the "tooltip" of the icon in the system tray. The tooltip is displayed when the cursor remains over the icon for a few seconds.

The **Program Path** is the full pathname of the file you want executed when you left-click on the system tray icon.

Traylcon will change the current directory to the directory specified in the **Startup Path** before executing this program.

Select the **Browse** button to select an icon file, executable or DLL file to select an icon from.

Program Arguments are passed as command-line parameters to the program that is run.

Click the **Prompt for Input** checkbox if you want to enter command-line parameters when you run this program.

Select the **Run style** you want the window to initially be. Choices are Normal window, Minimized or Maximized.

Information about Traylcon's author. Please register this program to promote the future development of shareware.

Select the icon you want to be displayed for this Trayicon object.

This is a picture of the **Icon** that will be displayed in the system tray.

Select **DeskAccess Icon** to create a special icon that you can use to quickly launch any of the icons on your desktop.

Check this box to play a Wave file when a TrayIcon icon is launched.

Filename of the Wave file that will be played when a TrayIcon icon is launched.

Click this button to browse for a Wave file that will be played when a TrayIcon icon is launched.

Select the **Single Click** radiobutton to launch TrayIcon icons with a single click of the mouse.

Select the **Double Click** radiobutton to launch TrayIcon icons with a double click of the mouse.

