

Contents of PowerBar Help

[Overview](#)

[PowerBar Basics](#)

Window Functions

[Tiling Windows](#)

[Applications List](#)

File Functions

[Running Programs](#)

[Copying Files](#)

[Deleting Files](#)

[Moving Files](#)

[Renaming Files](#)

[Finding Files](#)

Program Launcher

[Launching Programs](#)

[Adding a Program to the Launcher](#)

[Removing a Program from the Launcher](#)

[Controlling the Launch of a Program](#)

[Configuring the Launcher](#)

[Changing the position of programs on the Launcher](#)

General

[Exit Windows](#)

[Configuring PowerBar](#)

[Short Cut Keys](#)

[Common Questions](#)

[Using PowerBar as your Shell](#)

Miscellaneous

[About CVE Software](#)

Changing the position of programs on the Launcher

Re-ordering the Launcher

A facility is provided within the "Configure Launcher" dialog (selected from the PowerBar system menu) to allow the layout of the programs on the Launcher to be modified. This displays the "Re-order Launcher" dialog allowing the order of all items on the current Launcher strip to be changed. In addition items may also be deleted. For more details see the [Re-Order Launcher Dialog](#) section.

Moving programs on the Launcher

If upon adding a program to the Launcher you then decide that you would prefer the program in a different position it is NOT necessary to add the program again. To re-position a program, click the RIGHT mouse button within the icon of the program that you wish to move and continue to HOLD THE BUTTON DOWN. The mouse cursor will then change to the icon of the program that you are trying to move. Then simply move the mouse over the new position on the Launcher for this program and then let the mouse button up. The slot positions of the programs will then be swapped.

Copying programs on the Launcher

If upon adding a program to the Launcher you then decide that you would like to have another copy of the program in a different position (e.g. two different sessions of an emulator program) it is NOT necessary to add the program again. To copy a program, click the RIGHT mouse button within the icon of the program that you wish to move and continue to HOLD THE BUTTON DOWN. The mouse cursor will then change to the icon of the program that you are trying to move. Then simply move the mouse over the new position on the Launcher for this program, press the CONTROL key and while still holding the CONTROL key down, let the mouse button up. The program will then be copied into the new slot. .

Keyboard Restrictions

There is no keyboard interface to either the copy or move process. If you do not have a mouse and wish to re-order the position or copy a program on the Launcher using the keyboard the program must be "added" to the Launcher. For more information on adding programs see the [Adding a program to the Launcher](#) section.

Using PowerBar as your Shell

PowerBar can be configured as your shell program. This means that when you start Windows PowerBar is the program that is started (instead of Program Manager). PowerBar will still run the applications that are configured to start automatically each time that you run windows either inside your WIN.INI file or existing Program Manager "Startup" group.

Why you should use PowerBar as your Shell

PowerBar uses less of your valuable system resources than Program Manager leaving your system more capable of executing larger and more demanding programs.

PowerBar allows instant activation using the mouse or hot-key sequence regardless of the application that currently is active. This means you do not have to waste your valuable time searching behind other programs to find Program Manager so that you can launch the desired application.

In addition, PowerBar provides access to the most common File Manager functions so that in the majority of cases you would never need to load File Manager.

PowerBar provides more control over the way an application is launched (i.e. the application can be configured to "tile" neatly). The tiling functions provided allow the desktop to easily be configured.

How to Configure PowerBar as your Shell

If you have not installed PowerBar as your shell from the install program you can use PowerBar to modify the system settings.

To do this, select the "Configure PowerBar" option from the PowerBar system menu. The "Configure PowerBar" dialog is then displayed. In the "Windows Shell" section click (or select using the keyboard) the "PowerBar" radio button. Then select the "Done" push-button. You will then see the "Restart Windows" dialog. If you want the change to be made immediately select the "Restart Windows" button. If you are happy to wait until the next time you load windows, select the "Continue" button.

NOTE:

It is necessary that any Windows DLL files associated with the shell program are in the Windows directory (this is usually "c:\windows") or Windows will be unable to find the appropriate files when loading. In the case of PowerBar this means that the file CVEUTIL.DLL must be in the Windows directory (CVEUTIL.DLL is automatically installed to the Windows directory at installation time).

Replacing the standard "Task Manager" program

When you hit the CTRL-ESCAPE key combination, or double click the left mouse button on the desktop, Windows will run the default Task Manager program (i.e. this normally shows the currently running programs).

To do this, select the "Configure PowerBar" option from the PowerBar system menu. The "Configure PowerBar" dialog is then displayed. In the "Task Manager" section click (or select using the keyboard) the "PowerBar" radio button. Then select the "Done" push-button. You will then see the "Restart Windows" dialog. If you want the change to be made immediately select the "Restart Windows" button. If you are happy to wait until the next time you load Windows, select the "Continue" button.

When you activate the Task Manager PowerBar will now be displayed instead allowing access to a wider number of options than the default provided within Windows.

Running programs automatically every time you start Windows.

It is possible for Windows to automatically run programs each time that you start by including the name of the program that you wish executed on the "run=" or "load=" line within the WIN.INI file. PowerBar supports this functionality and will "run" an application specified in the "run=" section and "load" a program

(already minimised) specified in the "load=" line.

NOTE:

Programs that have previously been entered into the Program Manager Startup group will also be run as Windows starts when PowerBar is being used as the shell.

PowerBar Basics

The PowerBar program has two distinct sections, the "button bar" and the "Launcher". Each section is discussed separately below.

Button Bar

This section shows each of the PowerBar buttons with a simple explanation of each button. The accelerator key that you can use to instantly activate the function is shown in brackets e.g. (ALT + X) means the function can be activated by pressing the "Alt" and "X" keys at the same time.



Exit Windows and return to DOS (ALT + X).



Display the PowerBar Help file (ALT + H or "F1").



Activate the current screen saver (ALT + S).



Undo the last tiling operation (ALT + U).



Tile window in focus (ALT + 1)



Run a program (ALT + R)



Tile focus, minimise all others (ALT + 2)



Copy a file (ALT + C)



Restore all iconic windows (ALT + 3)



Delete a file (ALT + D)



Minimize all windows (ALT + 4)



Rename a file (ALT + N)



Tile all windows vertically (ALT + 5)



Move a file (ALT + M)



Tile all windows horizontally (ALT + 6)



Find a file (ALT + F)



Cascade all windows (ALT + 7)



Arrange all icons (ALT + 8)



List the "Running Programs" (ALT + 9)

For more information on managing your windows see the [Tiling Windows](#) section.

For more information on the file functions see the [Copying files](#) [Deleting Files](#) [Moving files](#) [Renaming files](#) and [Finding files](#) sections.

For more information of running applications that are not configured on the Launcher see the [Running programs](#) section.

For more information on the Exit Windows function see the [Exit Windows](#) section.

The Launcher

The PowerBar Launcher allows instant access to the most frequently used applications on your system. An example of the Launcher with only a small number of programs is shown below:



The launcher may have up to 80 different applications configured (in the "box" format), with a smaller number being visible if the Launcher is configured to be attached to the top, bottom, left or right of the screen. The number of applications that are then visible depend on the screen resolution. In VGA mode (640 x 480) typically 13 applications are visible, in Super VGA (800 x 600) 17 applications and 1024 x 768 mode 23 applications are visible.

For more information on Launching programs see the [Launching programs](#) section.

For more information on adding a program to the Launcher (from either File Manager, Program Manager or using PowerBar directly) see the [Adding a program to the Launcher](#) section.

NOTE:

Programs may be added to the Launcher directly from any existing Program Manager groups. See the [Add Program Manager Group Dialog](#) section.

For more information on controlling how a program is Launched see the [Controlling the Launch of a program](#) and [Configuring the Launcher](#) sections.

For more information on how to remove a program from the Launcher see the [Removing a program from the Launcher](#) section.

Applications List (ALT + 8)

Selection of the button shown above displays the "Running Programs" dialog (as shown below). This dialog is a replacement for the "Task Manager" provided with Windows (with more functions).



This dialog lists all applications that are currently running within Windows. The applications are listed in the "Programs:" list-box (in the example above there are four applications running). The six buttons below the list of programs have the following function:

Previous, this will display the previous application (and if minimised, restore the application). If there is no "previous" application a short "beep" is heard.

Next, selecting this button will display the next application (and if minimised, restore that application). If there is no "next" application a short "beep" is heard.

Switch To, selecting this button will make the currently selected application visible in the applications list the "active" application.

The "Switch To" button is the default button for this dialog and can be instantly activated by pressing the RETURN key.

End Task, selecting this option will terminate the currently selected application visible in the applications list (if necessary, a prompt will be made to save any changed information).

Done, this option closes the "Running Programs" dialog.

Help, selection of this button brings up this help text.

Controlling the Launch of a Program

The Properties Dialog associated with each application configured on the Launcher can be used to configure the way in which a specific application is executed.

NOTE:

To activate the properties dialog either double click the RIGHT mouse button on the application you wish to configure. Alternatively, press the CTRL and SHIFT keys together with the letter shown on the application if you do not have (or wish to use) the mouse.

Switching to an existing Copy

If you use a program (such as an electronic organiser) it may make sense to only have one copy running at any one time. If you select the "Switch to existing copy if already running" PowerBar will check to see if the application is already running. If the application is running PowerBar will activate that copy. If the application is not loaded, PowerBar will run the application. This function is ONLY valid for programs. It does not operate if the specified program name is a document.

The "Show" options

The "Show" options allow an application to be automatically sized upon execution. The options available (selected by clicking the appropriate button) are:

Minimised, run application as an icon.

Maximized, run application so that it occupies the full screen.

Tiled, run application so that the icons of other applications on the desktop may be viewed.

Normal, run application to whatever size is the current Windows default.

Overriding the default "Show" option

Certain key sequences can be used to override the pre-configured "show" option when necessary. This is achieved by holding down the special key and clicking on the application in the launcher as normal. The override options available are:

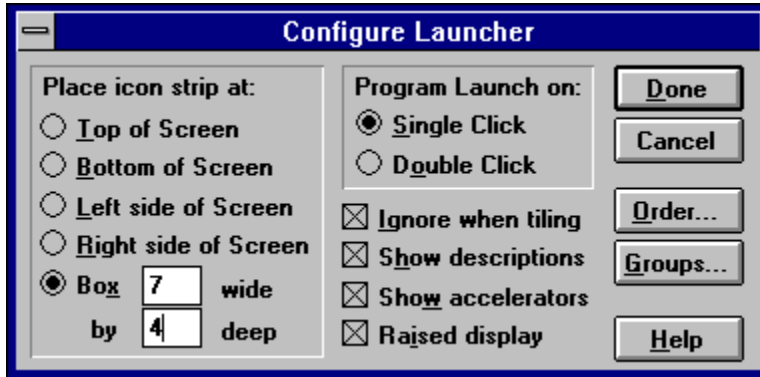
CTRL - Tiled

SHIFT - Minimised

ALT - Maximized

Configuring the Launcher

The Launcher has various configuration options that may be used to make the launching of applications as convenient as possible. These options are controlled using the "Configure Launcher" dialog that is activated by selecting "Configure Launcher" from the system menu. When selected, the dialog below is shown:



Single/Double click launch

An application may be configured to launch with a double click of the LEFT mouse button (as in Program Manager) or with a single click. The single click option is typically more convenient and is set as default.

Place icon strip at

The Launcher may be positioned at the top, bottom, left or right of the screen or in a box (or grid) format. In the cases where the strip is placed at the top or bottom extra slots are typically visible compared to the left or right position (as the screen is rectangular and more slots fit horizontally than vertically). To have up to 80 slots visible select the box format.

NOTE:

The different options may be tried without closing PowerBar by clicking on the desired position and selecting the "OK" button. PowerBar will then re-draw the Launcher if the position has been changed.

The Launcher defaults to a box of 7 columns by 4 rows and has the majority of the applications provided with windows pre-installed on the grid.

Ignore when Tiling

This option when checked will inform the PowerBar tiling functions to ignore the Launcher when performing a Tiling Windows function.

The default is to ignore the Launcher when tiling.

Show Descriptions on Launcher

This option when checked will display the description text of the icon in a convenient position on the launcher (usually just above the mouse). When cleared no descriptions are shown.

The default is to show descriptions on the Launcher.

Show Accelerator Keys

This option when checked will display the accelerator keys for the Launcher strip. The letter shown, when pressed at the same time as the CTRL key, will launch the program in the appropriate slot. When cleared, no accelerator keys are shown.

The default is to show accelerator keys on the Launcher.

Raised display

This option when checked will use a raised display for the launcher strip (as opposed to the recessed display shown above).

The default is to use the raised Launcher display.

NOTE:

All changed options are saved when the PowerBar is closed.

Adding a program to the Launcher

A program or application can be added to the Launcher in four different ways. These are using the "drag and drop" facilities of the Windows File Manager, using the PowerBar Find dialog, using the "Configure Launcher" Groups dialog to add programs from Program Manager and "manually" using the "Browse" option within the application properties dialog box.

Each of the methods is described in detail below:

Using File Manager "drag and drop"

When you have the file that you wish to add to the Launcher within File Manager, click on the file (it will usually then highlight to blue) but KEEP THE MOUSE BUTTON DOWN. Then move the mouse (the mouse will change from the default pointer to a representation of a file) over the appropriate slot in the Launcher and let the mouse button up. The program will then automatically be added to the Launcher in this position on the slot.

PowerBar will automatically fill in default values for the Properties Dialog associated with this application slot including extracting the description entered for the application by the author.

NOTE:

Do not let the mouse button up before positioning over the desired slot in the Launcher or Windows will "forget" which file you have selected.

A new program can be dropped over a slot that already has a program and will then replace the old program.

Using the PowerBar Find dialog

If an application that you wish to be added to the Launcher is currently visible on the PowerBar Find dialog (see the Finding Files section for how to search for files) this program can easily be added to the Launcher.

To add the program to the Launcher simply double click the secondary (usually the RIGHT mouse button on standard systems) mouse button. The program is then automatically added to the Launcher if there is a free slot. If there is no free slot visible, an error message is displayed (this can be corrected by increasing the size of the Launcher).

NOTE:

If a Program Manager group file is selected within the Find Files list box (shown with an extension of .GRP) the whole group of programs can be added by double clicking the secondary mouse button on this type of file.

Using the "Configure Launcher" Groups facility

PowerBar provides a convenient method to add any application to the Launcher that has already been configured within the Program Manager application.

To add a program, select the "Configure Launcher" option from the PowerBar system menu. The "Configure Launcher Dialog" will then be displayed. Select the "Groups..." button from this dialog. The "Add Program Manager Group Dialog" will then be displayed. This dialog lists all the Program Manager groups and the applications configured within the groups. Select any desired applications followed by the "Add" button to automatically add the program to the Launcher strip.

For more detail on how to use this method of adding programs to the Launcher see the Add Program Manager Group Dialog section.

Manually adding a program

Activate the properties dialog for the desired slot on the Launcher in which you wish to add a new application. Double click the RIGHT mouse button or press the CTRL, SHIFT and the letter key that is displayed in the desired Launcher slot all at the same time to activate the dialog (e.g. hit CTRL + SHIFT and the "A" key to activate the properties dialog for the first slot in the Launcher).

You can then type in the name of the program that you wish to add in the "Command Line" section. It is usually better to add the path for the program unless the program can be found on your system path (i.e. enter C:\WINDOWS\notepad.exe rather than notepad). Then click on the "OK" button and the default icon for your application will appear on the Launcher.

NOTE:

This is the ONLY value that MUST be filled in is the Command line field. The other are for information and help purposes only.

If you have defined document extensions to launch particular applications (e.g. DOLIST.DOC may launch your word processor) you may use one of these documents within the Launcher instead of the application name.

A .PIF file (usually associated with DOS programs) may also be added to the Launcher and the MS-DOS icon will be used for the program on the Launcher.

To see a full description of all the other fields on the Properties dialog see the [Properties Dialog](#) section.

Removing a program from the Launcher

To remove a program from the Launcher activate the Properties Dialog for this application. Double click the RIGHT mouse button or press the CTRL, SHIFT and the letter key that is displayed in the desired Launcher slot all at the same time to activate the dialog (e.g. hit CTRL + SHIFT and the "A" key to activate the properties dialog for the first slot in the Launcher).

Once the dialog is activated simply select the "Delete" option. A message box will appear asking for a confirmation of the delete process. If you wish to continue and actually delete the settings for the selected application slot select "Yes". If you do not wish to delete the application from the Launcher select "No".

NOTE:

Once the information for a program has been deleted the only way to get the program back again is to "Add" the program again. To do this see the [Adding a Program to the Launcher](#) section.

Common Questions

How much of my system resources does PowerBar use ?

PowerBar uses around 2% of your system resources and significantly less than the standard Program Manager or File Manager programs.

Can PowerBar be used as my Windows shell program ?

Yes, PowerBar can be configured to be both the standard Shell program in place of Program Manager and also replace the default Task Manager (usually activated by pressing CTRL-ESC). For more details and instructions on how to configure PowerBar in this way see the [Using PowerBar as your shell](#) section.

Can I use the programs that are already set up in Program Manager ?

Yes, see the [Adding a program to the Launcher](#) section for details of how to add programs to the Launcher in general and the [Add Program Manager Group Dialog](#) section for details specific to Program Manager.

Is there any advantage in using a larger screen with PowerBar ?

Only partially. If you have configured the Launcher to be displayed attached to the top, bottom, right or left of your screen, the higher the resolution of your screen the more applications that will be visible on the Launcher. The number of applications visible in VGA mode (640 x 480) is 13, Super VGA (800 x 600) mode is 17 and 1024 x 768 (XVGA) is over 20. No other function of PowerBar is affected by screen size.

NOTE:

If you have configured the Launcher as a box it does NOT matter which type of screen you have.

How do I get technical support on using PowerBar ?

PowerBar comes with this help file which is highly detailed in the operational aspects of PowerBar. If after reading the help file the problem still remains see the [About CVE Software](#) section for details on how to get further help.

NOTE:

If you have any fault reports or enhancement ideas please do not hesitate to make contact.

Overview

Description

PowerBar is a utility program for the Windows environment (and can also be used as your Windows shell) providing instant access to the most common tasks under Windows. This includes the following:

Window functions to make your working environment more manageable and helps to prevent your screen from becoming "cluttered" when you have more than one application running. See the [Tiling Windows](#) section for further information.

File functions that are readily available and easy to use (including an "instant" file find facility). Click the mouse on the function of interest shown below:

[Running Programs](#) [Copying Files](#)
[Deleting Files](#) [Renaming Files](#)
[Moving Files](#)
[Finding Files](#)

Program Launching for faster, more controlled access to the applications that you use most often. See the [Launching Programs](#) section for more details.

Information display, PowerBar continually monitors and displays your system resources as well as showing the current date and time.

Hot-key access, PowerBar supports an "instant" activation mouse and keyboard interface as well as providing further "hot-key" support for the most commonly used functions.

NOTE:

For a "quick view" of how to find more information on each of the PowerBar Buttons and Launcher see the [PowerBar Basics](#) section.

History

PowerBar grew from an original idea to provide and enhance the most commonly used features of the standard Windows "shell" programs (Program Manager, File Manager and Task Manager) all from one program. Instant access, ease of use and a low level of complexity were the major design goals that allow PowerBar to cater for at least 90% of the "everyday" needs of a user under Windows without presenting a complex user interface. If necessary the original programs, specifically File Manager, can be used for "heavy duty" file and directory management.

Activation

The user interface of PowerBar is via a "button bar". This simple interface hides considerable power yet provides an instantly recognised method of accessing the program functions. Once PowerBar is running it can be activated by:

Double clicking any mouse button on the desktop

Double clicking any mouse button on the PowerBar icon

Pressing the "CTRL" and "ALT" keys at the same time

and if PowerBar has been configured to replace the standard "Task Manager":

By pressing the "CTRL" and "ESCAPE" keys at the same time.

To perform a function, simply click with the mouse on the button corresponding to the function you

require. Where a PowerBar button has a highlighted character (usually shown in red) the function can be activated by pressing the "ALT" key and the appropriate character simultaneously.

NOTE:

PowerBar will save all configuration items each time the program exits. This means that upon activation everything will be as you left it.

"General" Help can be accessed at any time the PowerBar program is active by pressing the "F1" key.

Context sensitive help can be obtained from any dialog showing a "Help" button.

Tiling Windows

This section provides more detail on the different methods of controlling the display of windows on your desktop . The tiling functions are provided to allow the size and position of the windows on your screen to be controlled. The options available are discussed below with the button corresponding to that function shown. PowerBar will automatically allow for different screen resolutions where tiling of windows occurs.



Undo last tiling operation (ALT + U)

If a tiling operation using one of the PowerBar tiling functions (described below) has been actioned and you would like to reverse the operation. The tiling can be "un-done" by selection of the Undo button. If no tiling operation has occurred nothing will occur. The Undo facility only operates on the LAST tiling function used.



Tile focus window (ALT+1)

The window in focus (usually indicated with the "blue title bar") is tiled to the maximum size for this screen (the window will occupy the whole screen bar the area reserved at the bottom for any minimised programs). If the window in focus is currently minimised (an icon) it is activated.



Tile focus window and minimize all others (ALT + 2)

The window in focus (usually indicated with the "blue title bar") is tiled to the maximum size for this screen. All other windows are then minimised and the icons arranged tidily on the desktop. If the window in focus is minimised (an icon) it is activated.



Restore all the iconic windows (ALT + 3)

Any windows that are iconic (minimised) are restored to their size and position prior to being minimised (this function is essentially the reverse of "Tile focus window and minimize all others" described above).



Minimize all windows (ALT + 4)

Any windows that are currently visible will be minimized. This button provides a convenient mechanism to clear the desktop quickly.



Tile all windows vertically (ALT + 5)

Any window that is not minimised (an icon) is tiled so that the screen is divided equally between all the visible windows. If possible windows will be displayed "taller" rather than "wider".



Tile all windows horizontally (ALT + 6)

Any window that is not minimised (an icon) is tiled so that the screen is divided equally between all the visible windows. If possible windows will be displayed "wider" rather than "taller".



Cascade all windows (ALT + 7)

All windows that are not minimised (iconic) are cascaded starting from the top left corner of the screen.



Arrange all iconic windows (ALT + 8)

All windows that are already minimised (icons) will be re-arranged so that the desktop is tidy.

Windows

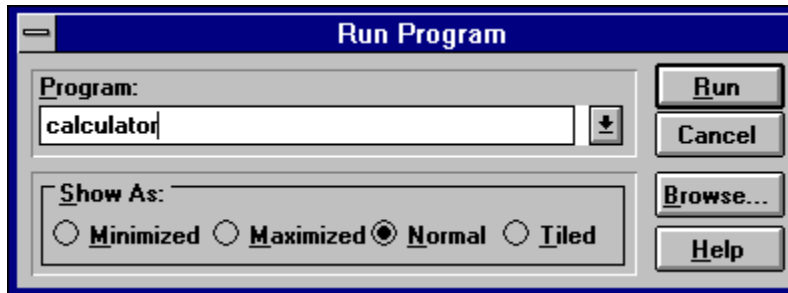
A window in the context of PowerBar is the term used to refer to an application running under the Microsoft Windows (TM) operating system. A program can have multiple "real windows" in that each icon or dialog is in programming terms entirely different.

Desktop

This is the area of the screen on which all the windows are found. In a normal system (i.e. using the standard colours) this would most often be the "grey" area upon which all the icons are shown and all applications are displayed.

Running Programs

The "Run Program" dialog can be used to execute programs and applications in the same way as the "File...Run" option of Program Manager or File Manager. This function is provided to cater for situations where there is a need to run a program that is not already configured on the Launcher. The "Run Program" dialog is shown below (with a full description of each item within the dialog):



Program

This combo-box contains the name of the program that you wish to execute. The last 25 programs executed are stored to avoid the need to re-type in the program name the next time the "Run Program" dialog is displayed.

In the example above the "calculator" program is to be executed.

Run

Once a program name has been entered selecting this button will cause the application to be executed.

Cancel

This button if selected will close the dialog without performing any function.

Browse

This button allows the user to move around the disk using a standard (or common) dialog to find the program to be executed.

Help

This button invokes this page of the PowerBar help system.

Show As

This section provides control over the way a program is executed. The options available are listed below:

Minimised, run application as an icon.

Maximized, run application so that it occupies the full screen.

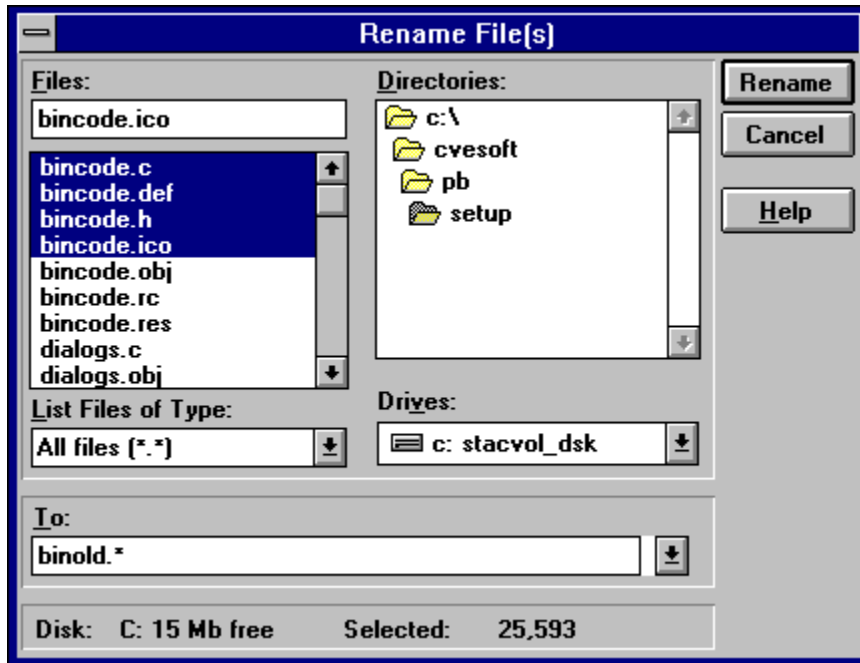
Tiled, run application so that the icons of other applications on the desktop may be viewed.

Normal, run application to whatever size is the current Windows default.

The last "Show As" setting used is preserved for convenience the next time the "Run Program" dialog is displayed.

Renaming Files

The PowerBar file functions are based on the Windows Common Dialogs that are used to perform most file operations within Windows applications. The **Renaming Files Dialog** (which is displayed by selecting the button shown above or pressing ALT+N) is shown below:



The various fields on this dialog are described below:

Files

This field (and the list box underneath) show the currently selected file (or files) that are to be renamed.

In the example shown above, the files "bincode.c", "bincode.def", "bincode.h" and "bincode.ico" are selected for renaming.

List Files of Type

This field applies a filter to the files that are shown in the "Files" list box.

In the example shown "All files" (i.e. of any type) are shown but some of the other available selections include "Programs (*.exe)" and "Documents (*.doc)".

Directories

This field shows the current directory that contains the files that are shown in the "Files" list box.

In the example shown the current directory is "\\CVESOF\\PB\\SETUP".

Drives

This field shows the current disk drive that contains the files selected.

In the example shown the current disk drive is "C:".

To

This field contains the new name for the selected files. The destination directory is the same for a file

rename but the last 25 rename values entered will be retained for re-use during subsequent file rename operations.

In the example shown the destination directory is the same but the files are all to be renamed to "binold.*" so "bincode.c" changes to "binold.c", "bincode.def" changes to "binold.def", etc.

Disk

This field shows the amount of amount of free space on the currently selected drive.

In the example shown the "C:" disk has 33Mb of free space.

Selected

This field shows the TOTAL size of the currently selected file (or files).

In the example above, the size of the selected files are 25,593 bytes.

Rename

Selection of this button will perform the file rename operation. When a file process is underway a "gas gauge display" is shown to provide user feedback (see the [Percentage Complete Dialog](#) for further information).

Cancel

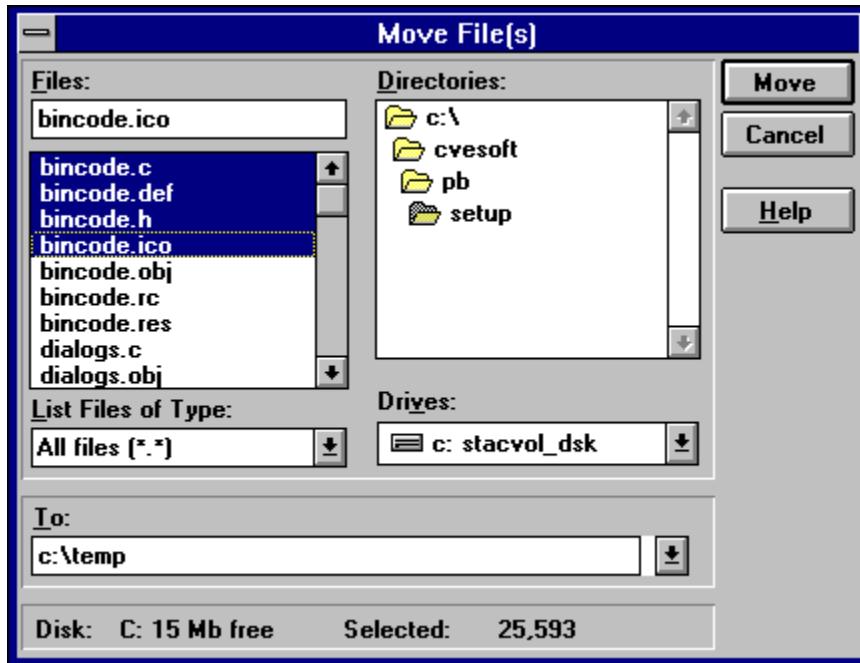
The dialog is closed and no further action takes place.

Help

Selecting the Help button displays this section of the PowerBar help system.

Moving Files

The PowerBar file functions are based on the Windows Common Dialogs that are used to perform most file operations within Windows applications. The **Move Dialog** (which is displayed by selecting the button shown above or pressing ALT+M) is shown below:



The various fields on this dialog are described below:

Files

This field (and the list box underneath) show the currently selected file (or files) that are to be moved.

In the example shown above, the files "bincode.c", "bincode.def", "bincode.h" and "bincode.ico" are selected for moving.

List Files of Type

This field applies a filter to the files that are shown in the "Files" list box.

In the example shown "All files" (i.e. of any type) are shown but some of the other available selections include "Programs (*.exe)" and "Documents (*.doc)".

Directories

This field shows the current directory that contains the files that are shown in the "Files" list box.

In the example shown the current directory is "\\CVESOF\\PB\\SETUP".

Drives

This field shows the current disk drive that contains the files selected.

In the example shown the current disk drive is "C:".

To

This field contains the complete path name of the destination for the selected files. The destination must

be entered by hand but the last 25 values entered will be retained for re-use during subsequent file move operations.

In the example shown the destination is "C:\cvesoft\pb\release\disk1".

Disk

This field shows the amount of amount of free space on the currently selected drive.

In the example shown the "C:" disk has 33Mb of free space.

Selected

This field shows the TOTAL size of the currently selected file (or files).

In the example above, the size of the selected files are 25,593 bytes.

Move

Selection of this button will perform the file move operation. When a file process is underway a "gas gauge display" is shown to provide user feedback (see the [Percentage Complete Dialog](#) for further information).

In cases where a file overwrite will occur the [Overwrite Confirm Dialog](#) is displayed.

Cancel

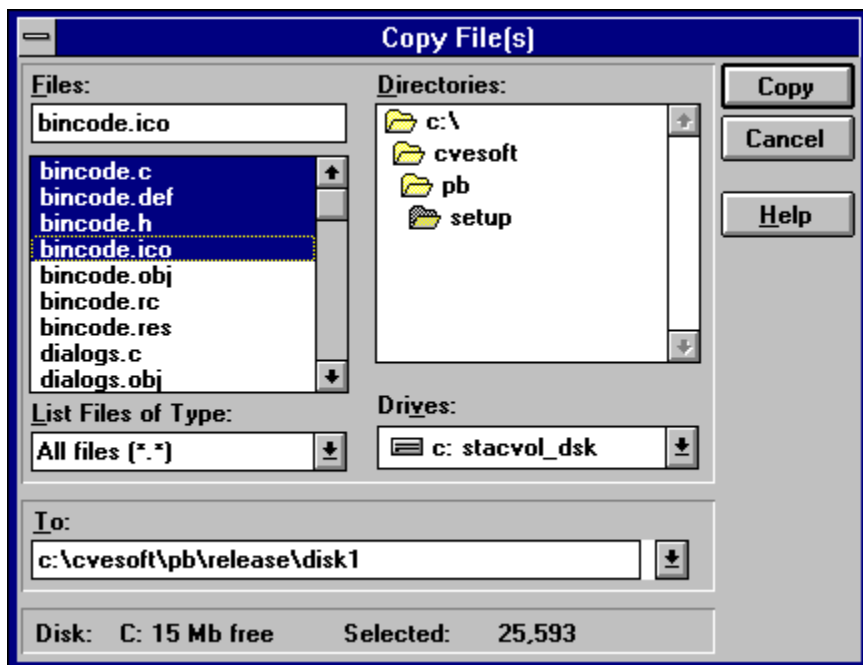
The dialog is closed and no further action takes place.

Help

Selecting the Help button displays this section of the PowerBar help system.

Copying Files

The PowerBar file functions are based on the Windows Common Dialogs that are used to perform most file operations within Windows applications. The **Copy Dialog** (which is displayed by selecting the button shown above or pressing ALT+C) is shown below:



The various fields on this dialog are described below:

Files

This field (and the list box underneath) show the currently selected file (or files) that are to be copied.

In the example shown above, the files "bincode.c", "bincode.def", "bincode.h" and "bincode.ico" are selected for copying.

List Files of Type

This field applies a filter to the files that are shown in the "Files" list box.

In the example shown "All files" (i.e. of any type) are shown but some of the other available selections include "Programs (*.exe)" and "Documents (*.doc)".

Directories

This field shows the current directory that contains the files that are shown in the "Files" list box.

In the example shown the current directory is "\CVESOF\PB\SETUP".

Drives

This field shows the current disk drive that contains the files selected.

In the example shown the current disk drive is "C:".

To

This field contains the complete path name of the destination for the selected files. The destination must

be entered by hand but the last 25 values entered will be retained for re-use during subsequent copy operations.

In the example shown the destination is "C:\cvesoft\pb\release\disk1".

Disk

This field shows the amount of amount of free space on the currently selected drive.

In the example shown the "C:" disk has 33Mb of free space.

Selected

This field shows the TOTAL size of the currently selected file (or files).

In the example above, the size of the selected files are 25,593 bytes.

Copy

Selection of this button will perform the file copy. When a file process is underway a "gas gauge display" is shown to provide user feedback (see the [Percentage Complete Dialog](#) for further information).

In cases where a file overwrite will occur the [Overwrite Confirm Dialog](#) is displayed.

Cancel

The dialog is closed and no further action takes place.

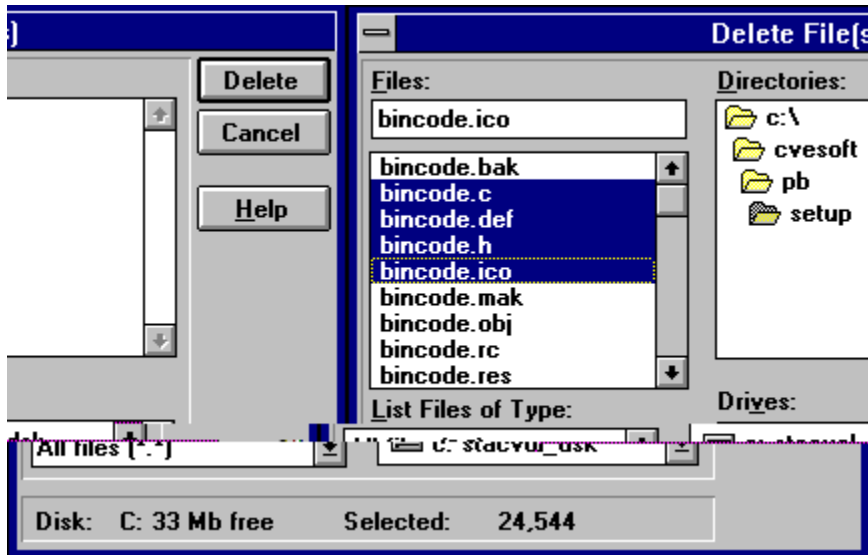
Help

Selecting the Help button displays this section of the PowerBar help system.

Deleting Files



The PowerBar file functions are based on the Windows Common Dialogs that are used to perform most file operations within Windows applications. The **Delete Dialog** (which is displayed by selecting the button shown above or pressing ALT+D) is shown below:



The various fields on this dialog are described below:

Files

This field (and the list box underneath) show the currently selected file (or files) that are to be deleted.

In the example shown above, the files "brcode.c", "brcode.def", "brcode.h" and "brcode.ico" are selected for deleting.

List Files of Type

This field applies a filter to the files that are shown in the "Files" list box.

In the example shown "All files" (i.e. of any type) are shown but some of the other available selections include "Programs (*.exe)" and "Documents (*.doc)".

Directories

This field shows the current directory that contains the files that are shown in the "Files" list box.

In the example shown the current directory is "\CVESOF\PB\SETUP".

Drives

This field shows the current disk drive that contains the files selected.

In the example shown the current disk drive is "C:".

Disk

This field shows the amount of amount of free space on the currently selected drive.

In the example shown the "C:" disk has 33Mb of free space.

Selected

This field shows the TOTAL size of the currently selected file (or files).

In the example above, the size of the selected files are 24,544 bytes.

Delete

Selection of this button will perform the file function. When a delete process is underway a "gas gauge display" is shown to provide user feedback (see the [Percentage Complete Dialog](#) for further information).

In all cases prior to deletion of files the [Delete Confirm Dialog](#) is displayed.

Cancel

The dialog is closed and no file deletion takes place.

Help

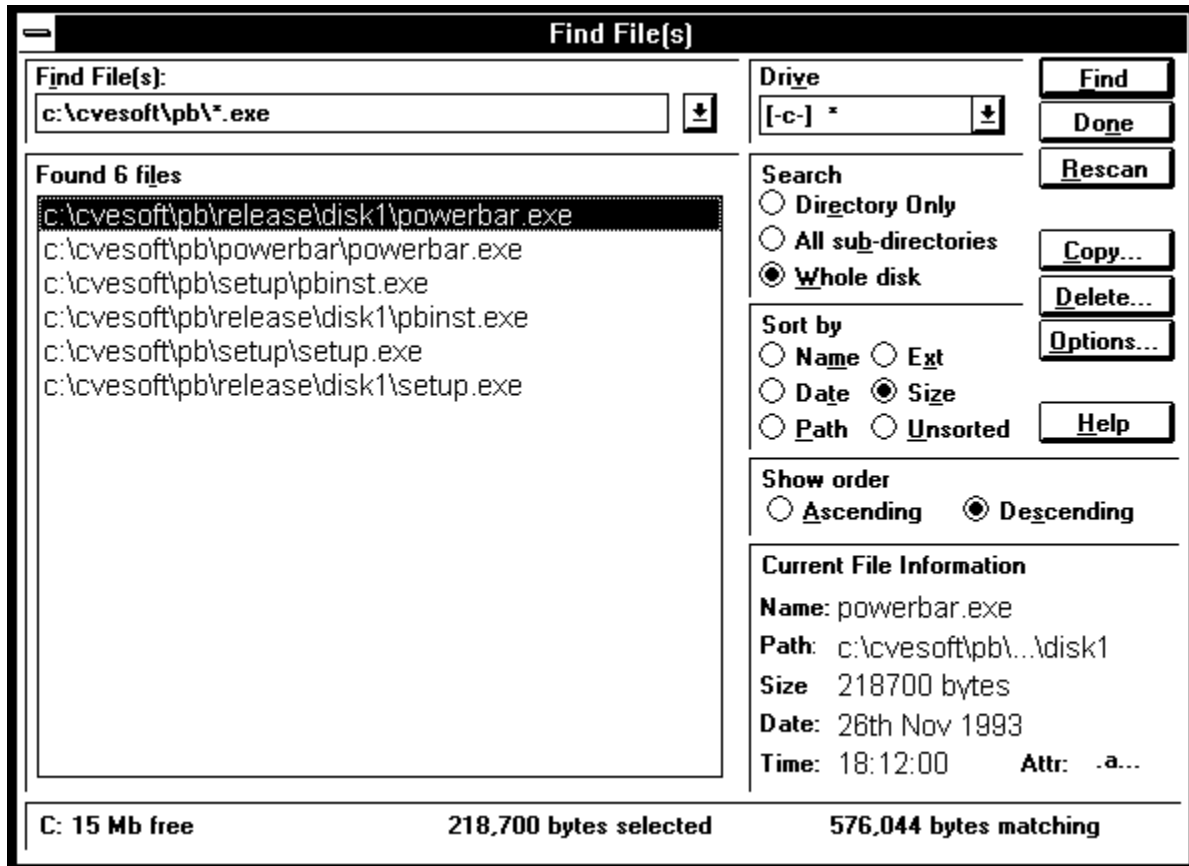
Selecting the Help button displays this section of the PowerBar help system.

Finding Files

The Find Files dialog is used to locate files within your system. The find facility is extremely fast and when using the "keep file list in memory" from the [Find Options Dialog](#). This makes second and subsequent searches instantaneous and avoids the need to re-scan the disk. To display the Finding Files dialog select the button shown above (or by pressing ALT+F at the same time. The Find Files dialog is shown below:

NOTE:

It is intentional that this dialog is shown in **monochrome** (black and white) as the help system will not happily support a colour image of this size.



The various fields on this dialog are described below:

Find Files

This field defines the name of the file (or files) that is being searched for. The last 25 values entered in this section will be saved for re-use on subsequent invocations of the Find Dialog.

In the example above, the files being searched for are all ".EXE" files in the "C:\CVESOFT\PB" directories.

The "Find Files" list box displays the matching files found. Over 2000 files can be shown at once but it is recommended that the search criteria is refined to reduce the number to a manageable number.

If a file displayed in the "Find Files" list box is a program file (i.e. has the ".EXE" extension) the application may be executed by double clicking on the file name (if another type of file is double clicked and an association exists within the WIN.INI file the appropriate application will be launched, e.g. clicking on

"picture.bmp" will launch the PAINTBRUSH application).

Drive

This field shows the current drive selected for the search process. If a drive letter has been added to the name of the "Find Files" section described above this value may be overridden.

All drives on your system (including network drives) will be shown in this combo box. To select a new drive for searching, click on the appropriate drive letter.

In the example dialog shown above, the current drive is "C:".

Search

This group of radio buttons defines the scope of the search process. The options available are:

Directory Only, this option will only search the directory specified.

All sub-directories, this option will search the directory specified and all sub-directories.

Whole disk, this option will search the whole disk.

In the example dialog shown above the "whole disk" was selected for searching.

Sort By

This group of radio buttons defines the sorting method that is used to show any files that match the search criteria. The options available are:

Name, this option will display the matching files sorted by the filename.

Date, this option will display the matching files in date order.

Size, this option will display the matching files in order of file size.

Path, this option will display the matching files sorted by their path.

Ext, this option will display the matching files sorted by their extension.

Unsorted, this option will display the matching files in the order in which they were encountered during the search process.

In the example dialog shown above the "sorting method" selected is "sort by size".

Show Order

This group of radio buttons controls the sorting order in which to show any files that match the search criteria are displayed. The options available are:

Ascending, files are shown moving from lower order to higher order. In size comparisons this means smaller files are shown first. In alphabetic comparisons this means that the letter "A" is shown before the letter "Z".

Descending, files are shown moving from higher order to lower order. In size comparisons this means that larger files are shown before smaller files. In alphabetic comparisons this means that the letter "Z" is shown before the letter "A".

In the example dialog shown above the "show order" selected is "Descending" (i.e. show largest files first).

Current File Information

This section shows detailed information about the file that is currently selected in the "Find Files" list box. The information available is as follows:

Name, the name of the file.

Path, the path on the disk in which the file is to be found.

Size, the size of the file.

Date, the last date upon which this file was changed (or created).

Time, the last time upon which this file was changed (or created).

Attr, the file attributes of this file (these can be "archive", "read only", "system" or "hidden").

This section is updated each time a different file is highlighted in the "Find Files" list box.

In the example dialog shown above the currently highlighted file name is "POWERBAR.EXE", the path is "c:\cvesoft\pb\release\disk1", the size is 218700 bytes, the date and time are 26th Nov 1993 at 18:12:00 and the attributes are "archive" (i.e. a normal file).

Status Information

The status bar at the bottom of the "Find Files" dialog shows the currently selected disk, the amount of free space on this disk, the number of bytes currently selected in the "Find Files" list box and the total number of bytes of all files that match the original search criteria.

When a **Copy** or **Delete** operation is in progress this area displays a "gas gauge" to show the "percentage complete" of the particular file operation

Find

Selection of this button will attempt to find the files that match the search criteria entered in the "Find Files" combo box and on the disk drive shown in the "Drives" combo box.

If the disk selected has not previously been "scanned" the disk will now be scanned. If the disk has been scanned and the "keep file list in memory" option has been selected from the [Find Options Dialog](#) this button will search the memory list of files on the selected disk.

Done

Selection of this button will close the Find Files dialog and no action will be taken.

Rescan

Selection of this button will attempt to find the files that match the search criteria entered in the "Find Files" combo box and on the disk drive shown in the "Drives" combo box. The file list that is stored in memory will be refreshed each time this button is selected.

For instantaneous searching use the "Find" option described above.

Copy

Selection of this button will display the [Copy a File Dialog](#) allowing the currently selected files to be copied to a specified destination.

Delete

Selection of this button will display the [Delete Confirm Dialog](#) allowing the currently selected files to be deleted.

Options

Selection of this button will display the Find Options Dialog allowing various configuration options to be selected that affect the operation of the "Find Files" dialog.

Help

Selection of this button will display this section of the PowerBar help system.

Exit Windows



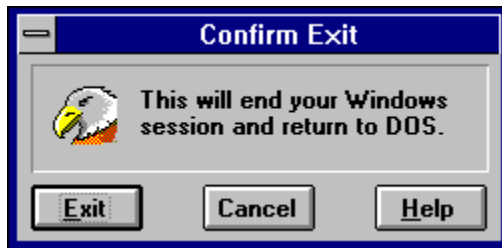
The "Exit Windows" option is a quick way to exit windows and avoid having to either find the program you are using as the "Windows shell" (usually Program Manager or File Manager) and then close that application. You can also avoid the necessity for an "Are you sure ?" dialog prior to leaving (if desired).

NOTE:

In **ALL** cases if any application has some information that may need saved you **WILL** be asked by that application do you wish to save before Windows closes. This is a feature of Windows and is **NOT** circumvented by PowerBar.

If PowerBar is configured to be the "Windows shell", selection of this option will automatically terminate all other programs.

If the "Confirm Exit Windows" menu item is selected on the system menu, a confirmation dialog is displayed as shown below:



If **Exit** is selected, Windows is closed and the system will return to the MS-DOS prompt.

If **Cancel** is selected, the procedure is cancelled and the PowerBar button bar is re-displayed.

If **Help** is selected, this section of the help system is displayed.

Short Cut Keys


PowerBar provides a comprehensive keyboard interface for users that prefer keyboard short-cuts rather than always using the mouse. The important keyboard sequences are described below.

Activating PowerBar

PowerBar can be instantly activated without any need to use the mouse by pressing the CTRL and ALT keys at the same time. If you wish to change the default PowerBar activation hot key see the [Set Hot Key Dialog](#) section.

The ALT key

Functions on the button bar can be accessed by pressing the ALT key and the letter or number that is highlighted in red.

For example, for the button shown,  pressing the ALT key and the "R" key (which is the key highlighted in red) at the same time activates the "Run Program" dialog.

For a list of all the ALT key accelerators see the [PowerBar basics](#) section.

The CTRL key

Programs on the Launcher may be executed by pressing the CTRL key and the letter that is shown in the Launcher "slot" that is occupied by the icon of the program that you wish to executed.

For example, for the launcher slot shown,  which contains the icon of the File Manager, pressing the CTRL key and the "A" key (visible in the top left hand corner of the slot) at the same time activates the File Manager program.

NOTE:

The first 36 programs on the Launcher have a short cut key. If you are using a Box with more than 36 programs move your most commonly accessed programs to the top 36 slots.

General Help

By pressing the F1 key when the button bar is visible will load this help file (context sensitive help on specific dialogs may be gained using either the "Help" button on each dialog or by pressing the F1 key.).

Launching Programs

The Launcher is a convenient way to launch a program or application. The application may be launched using either the mouse or keyboard. A portion of a complete strip is shown below as an example.



Using the Mouse

Activate PowerBar by double clicking either the LEFT or RIGHT mouse button on the desktop or by pressing the CTRL and ALT keys at the same time. Then simply move the mouse over the application you wish to execute and click the LEFT mouse button. If you have launch on single click, click once and the application will be launched, otherwise double click to launch the application. For more information on configuring the Launcher see the [Configuring the Launcher](#) section.

If you wanted to "launch" the File Manager program from the example Launcher shown above you would move the mouse so that it is within the icon of the File Manager (the first icon from the left) and click the LEFT mouse button.

Using the Hot Keys

Activate PowerBar by double clicking either the LEFT or RIGHT mouse button on the desktop or by pressing the CTRL and ALT keys at the same time. Then press the CTRL key and the letter shown in the launch position of the program that you wish to launch. For more information on configuring the Launcher see the [Configuring the Launcher](#) section.

If you wanted to "launch" the File Manager program the example Launcher shown above, you would press the CTRL and "A" key at the same time.

NOTE:

The Launcher only has 36 different hot-keys to launch programs. If you wish to have more than 36 programs on your Launcher you must use the mouse (or the "Cursor Key" interface described below) to launch any application that does not have a hot-key.

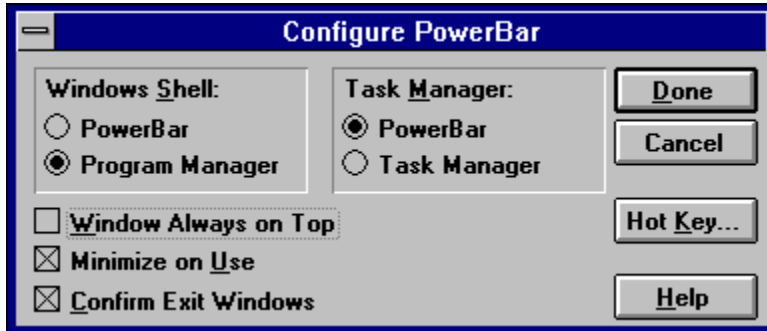
Using the Cursor Keys

The cursor keys may be used to move around the Launcher and Launch programs. The "current" application is shown on the Launcher in white (in addition, if "raised display" is selected the current application is shown recessed, if "raised display" is not chosen and all the programs are recessed, the current application is shown raised).

To change the current application use the cursor (or arrow) keys. To "launch" the current application press the ENTER (or RETURN) key.

Configuring PowerBar

PowerBar has several configurable options. These options are all selected in the same manner via the Configure PowerBar dialog (see the [Configuring the Launcher](#) section for Launcher configuration options). To display the Configure PowerBar dialog, select the "Configure PowerBar" option from the system menu. This dialog is shown below:



Windows Shell

PowerBar may be configured as your Shell program. For a more detailed discussion see the [Using PowerBar as your Shell](#) section. To select PowerBar as your Windows shell select the "PowerBar" radio button, to select Program Manager as your Windows shell select the "Program Manager" radio button.

When displayed the settings in the dialog reflect the current system settings (i.e. if Program Manager is currently your shell, the "Program Manager" radio button is highlighted).

Task Manager

PowerBar may be configured as your default Task Manager program (activated when you press CTRL+ESC simultaneously). For a more detailed discussion see the [Using PowerBar as your Shell](#) section. To select PowerBar as your Task Manager select the "PowerBar" radio button, to select the default Task Manager select the "Task Manager" radio button.

When displayed the settings in the dialog reflect the current system settings (i.e. if PowerBar is already your Task Manager, the "PowerBar" radio button is highlighted).

Always on Top

When selected ensures that the PowerBar window and Launcher are always displayed "on top" of all other windows.

NOTE:

Even if selected the PowerBar icon is never "always on top" to prevent irritation when using another full-screen application.

Minimize on Use

When selected will cause PowerBar to minimise after selection of a Tiling function or the Launch of a program. This is similar to the "minimise on use" function of the standard Windows shell program Program Manager.

Confirm Exit Windows

When selected will prompt to confirm that you really do want to close windows and return to DOS. In all cases, if any application is open (e.g. a word processor with a file loaded) the application will prompt you to save.

Help

Selection of this button will display this section of the PowerBar help system.

NOTE:

All configurable options (as well as the last position of PowerBar on the screen) are saved in the PowerBar configuration file (POWERBAR.INI).

About CVE Software



CVE Software is a software house based in the United Kingdom that specialises in Windows software. CVE Software have been active in the Windows development environment since Windows 2.03 (1989) and have developed with Windows through Versions 2.03, 2.11, 3.0, 3.1 and now to Windows NT. CVE Software have access to a pool of dedicated software professionals who create quality software products. Particular areas of knowledge include "system level" windows and user interface design.

CVE Software do undertake bespoke development and are delighted to offer a consultancy service covering all aspects of the software life cycle.

Any comments, suggestions on ways to improve any CVE Software product would be greatly appreciated.

CVE Software has different postal addresses to facilitate contact by mail. These addresses are shown below:

United States and Canada

CVE Software,
9 Visco Drive,
Edison,
New Jersey,
NJ 08820,
USA.

United Kingdom and Rest of World

CVE Software,
115 Eswyn Road
Tooting,
London,
SW17 8TW,
England.

There are two methods to contact CVE Software using electronic mail. These are via the global conferencing **CompuServe** system and the U.K. conferencing system **CIX**. The necessary details are shown below:

CompuServe : 76314,1552

CIX : CVESOFT @ CIX.COMPULINK.CO.UK

Properties Dialog

The Properties dialog (configured for the File Manager program) is shown with the descriptions of the various fields associated with this dialog given below.



Description

The text in this field is used to provide a memory prompt as to the meaning of the icon on the Launcher. The text is displayed on the PowerBar status line when the mouse is over the Launcher slot that contains this icon.

In the example above the description field is "File Manager (Windows for Workgroups)" which is significantly more useful than just the program name.

Command Line

This field is used to launch the program. Any command line parameters would be added here (NOTE: case sensitivity is preserved). PowerBar used this information to actually launch the program. If the program is not in your Windows directory or system path be sure to enter the complete file name including path (e.g. "c:\c700\bin\winfile.hlp" rather than just "winfile.hlp").

Working Directory

If it is necessary for your application to start in a specific directory (e.g. the directory that contains your documents in the case of a word processor) add the directory name in this field.

In the example above the directory is "c:\win3.1" (although the working directory is not strictly required for File Manager).

Switch to existing copy if already running

If this option is selected PowerBar will examine your system to see if the selected application is already running. If it is, PowerBar will simply activate the existing copy. If the application is not running, PowerBar will run the program.

In the example shown above, PowerBar will always switch to an existing copy of the File Manager.

NOTE:

This option is only valid for program files. It is not applicable for document files.

Show

The "Show" options allow an application to be automatically sized upon execution. The options available (selected by clicking the appropriate button) are:

Minimized, run application as an icon.

Maximized, run application so that it occupies the full screen.

Tiled, run application so that the icons of other applications on the desktop may be viewed.

Normal, run application to whatever size is the current Windows default.

In the example above the WINFILE program is configured to run in "tiled" mode.

Icon

This field shows the icon associated with this program as displayed on the Launcher. If an application has more than one icon the scroll bar may be used to select a different icon.

NOTE:

The **File** button may be used to select an icon from a different file if required (the "moricons.dll" file contains a large sample of different icons)

Browse

The Browse button can be used to select a new file for the selected slot on the Launcher. The selection does not become active until the "OK" button is chosen from the Properties dialog.

Delete

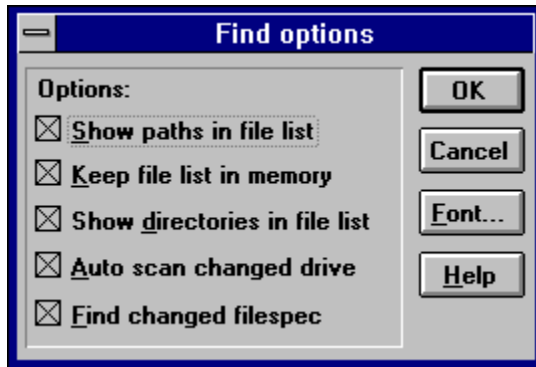
This option can be used to remove an application from the Launcher. Upon selection a confirmation is requested as deletion of the slot information cannot be reversed. For more detail on this see the [Removing a Program from the Launcher](#) section.

Help

Selection of this button brings up this section of the help text.

Find options dialog

The default operation of the PowerBar File Find facility may be controlled with the Find Options dialog shown below. This dialog is displayed by selecting the "Options..." button on the "Find" dialog.



Show paths in file list

When selected the full path name of any file matching the Find criteria is displayed within the Find list box. When cleared only the filename will be displayed.

For Example, using a Find criteria of "*.exe" and file "c:\win3.1\winfile.exe".

When selected, "c:\win3.1\winfile.exe" will be shown.

When cleared, "winfile.exe" will be shown.

Keep file list in memory

When checked PowerBar will keep the search tree for each disk that is encountered (hard disks only) in global memory. This means that second and subsequent searches are instantaneous. When cleared PowerBar will re-scan the disk each time a file operation is selected.

Show directories in file list

When selected any directory that matches the Find criteria (e.g. "c:\win3.1") is displayed within the Find list box. When cleared directory entries are not shown (NOTE: At all times, directories are shown in upper case and filenames in lower case).

For Example, using a Find criteria of "*.exe" and file "c:\win3.1\winfile.exe".

When selected, the directory "C:\WIN3.1" and the file "c:\win3.1\winfile.exe" will be shown.

When cleared, only the file "c:\win3.1\winfile.exe" will be shown.

Auto scan changed drive

When selected any change to the current drive setting combo box caused by selecting a value from the "Drive" combo box will cause an automatic Find operation to occur. When cleared, the "Find" button must be selected to perform the Find operation.

Auto scan changed filespec

When selected any change to the Find criteria caused by selecting a value from the find combo box will cause an automatic Find operation to occur. When cleared, the "Find" button must be selected to perform the Find operation.

Font

Selection of the Font button displays the Font dialog that allows the font used within the Find list box to be

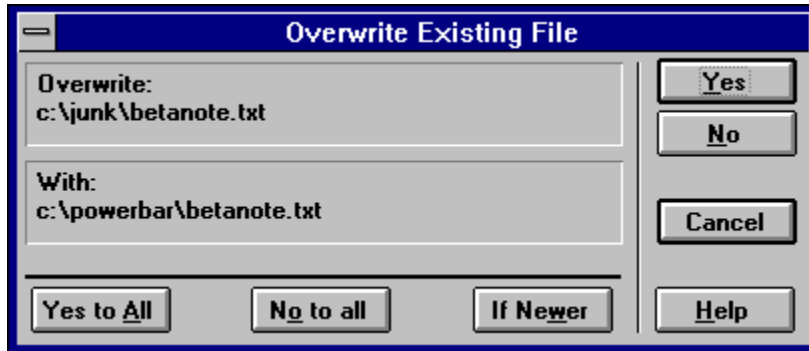
selected. The font size is choices are limited to a meaningful size.

Help

Selection of this button displays this section of the PowerBar help system.

Overwrite Confirm Dialog

When a file operation is about to occur that would result in a file of the same name being overwritten, PowerBar will display the "Overwrite Existing File Dialog". This dialog is shown below (followed by a description of the various options):



Overwrite

This field shows the name of the file (and the directory that the file is in) that will be overwritten.

With

This field shows the name of the file (and the directory it comes from) of the new file.

Yes

Selection of this button allows the file in question to be overwritten. In the example above this means that "c:\junk\betanote.txt" will be overwritten.

No

Selection of this button will NOT overwrite this file and the file process will move to the next file to be processed (if any).

Yes to All

This will allow the file in question and all others in this particular file operation to be overwritten.

No to All

Selection of this button will NOT overwrite this file or any others in this file process but WILL copy all files that would result in an overwrite.

If Newer

Selection of this button will only overwrite the file or any others in this file process if the file is NEWER. This means that the date and time stamp for the file in the "With" field is more recent than the date and time stamp for the file in the "Overwrite" field.

Cancel

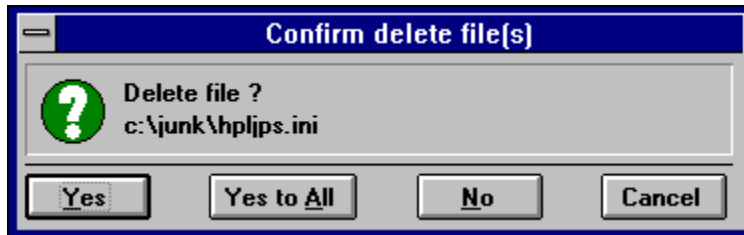
Stop this and all other file operations without taking any further action.

Help

Selection of the help button will display this section of the PowerBar help system.

Delete Confirm Dialog

When a file delete operation is about to occur, PowerBar will display the "Confirm Delete" dialog. This dialog is shown below (followed by a description of the various options):



Delete File:

This field shows the name (and directory) of the file about to be deleted.

Yes

Selection of this button allows the file in question to be deleted.

Yes to All

This will allow the file in question and all others in this particular file operation to be overwritten.

No

The file in question is NOT overwritten and the file process will move to the next file (if any).

Cancel

Stop the file operation with no further action.

Help

Selection of the help button will display this section of the PowerBar help system.

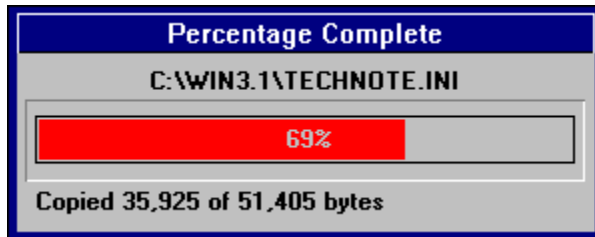
Percentage Complete Dialog

The "Gas Gauge" Dialog is shown to provide user feedback during file operations. The dialog has two different modes of operation as follows:

Copying / Moving, the "gas gauge" shows the percentage of the copy (or move) that is completed expressed as the number of bytes already copied / total to be copied.

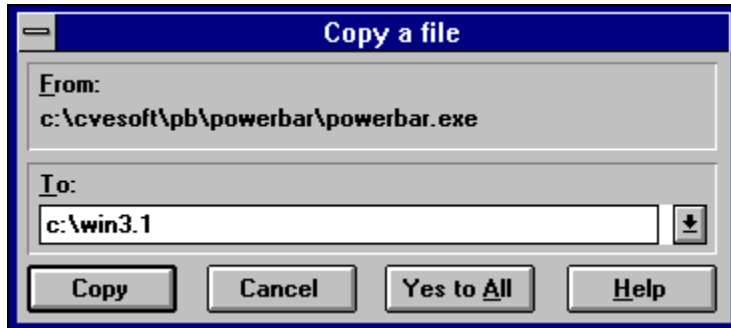
Deleting / Renaming, the "gas gauge" shows the percentage of the deletion (or renaming) where each file is allocated an equal percentage regardless of size.

The appearance of the dialog (taken whilst running) is shown below:



Copy a File Dialog

The Copy a File dialog is displayed when the **Copy** button is selected from the "Find Files" dialog. This dialog allows the destination for the file copy process to be selected. The Copy a file dialog is shown below:



The various fields on this dialog are described below:

From

This field shows the full name (filename and path) of the file that is about to be copied.

In the example above the file that is about to be copied is "powerbar.exe" from the directory "c:\cvesoft\pb\powerbar".

To

This field shows the destination for the file copy process. The last 25 destinations are stored within the "To" combo box for re-use on subsequent copy operations.

In the example above the file will be copied into the "c:\win3.1" directory.

Copy

Selection of this button will begin the file copy process.

Cancel

Selection of this button will close the "Copy a File" dialog with no action being taken.

Yes to All

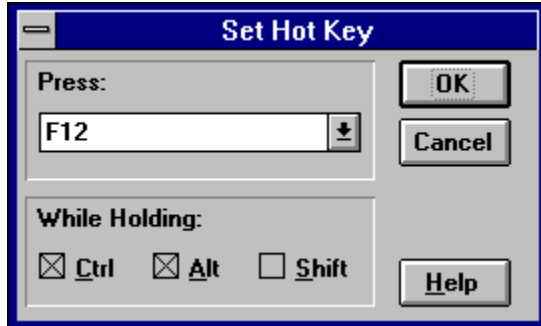
Selection of this button will begin (or continue) the file copy process and subsequent files will be copied without the "Copy a File" dialog being re-displayed for each file.

Help

Selection of this button will display this section of the PowerBar help system.

Set Hot Key Dialog

The Set Hot Key dialog is displayed when the "Hot Key..." button is selected from the "Configure PowerBar" dialog. This dialog allows the instant activation hot key to be selected. The Set Hot Key dialog is shown below:



The various fields on this dialog are described below:

Press

This field shows the key that must be pressed for the hot key to activate.

In the example shown above the key that must be pressed is "F12".

While Holding

This field shows the modifier keys that must be pressed at the same as the key within the "Press" field for the hot key to activate.

NOTE:

A value of "None" in the "Press" field means that only the modifier keys are required (e.g. the default PowerBar hot key configuration is "CTRL" and "ALT" together with no other key pressed).

In the example shown above modifier keys that must be pressed are "CTRL" and "ALT".

Cancel

Selection of this button will close the "Set Hot Key" dialog with no change being made to the current hot key setting.

OK

Selection of this button will accept the new hot key value and immediately to use this value for instant activation of PowerBar for Windows.

In the example above the complete hot key sequence for instant activation is "CTRL", "ALT" and "F12" simultaneously.

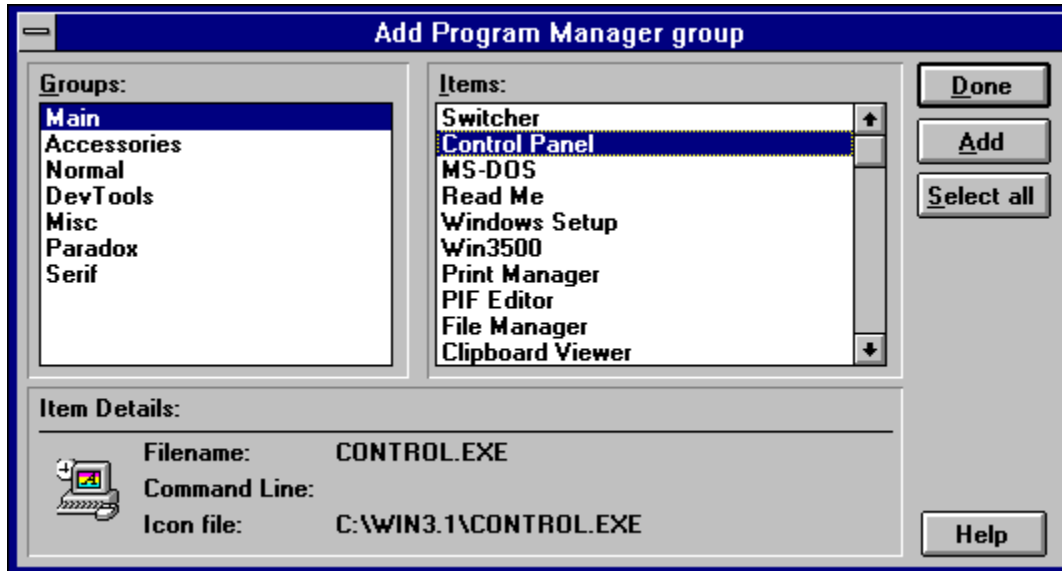
Help

Selection of this button will display this section of the PowerBar help system.

Add Program Manager Group Dialog

The Add Program Manager Group Dialog is displayed when the "Group..." button is selected from the "Configure Launcher" dialog. This dialog shows all the Program Manager groups and the applications defined within these groups in your system.

The Add Program Manager Group dialog is shown below:



The various fields on this dialog are described below:

Groups

This list box contains all the Program Manager Groups that are defined within your system.

In the example dialog shown the "Main" group is highlighted.

Items

This list box contains all the applications that are defined within the currently highlighted "group" file in the "Groups" list box described above.

In the example dialog shown the highlighted item is the Windows Control Panel from the "Main" program group.

Item Details

The "Item Details" section is used to display information relating to the currently selected item from the "Items" list box. The information shown gives the name of the executable file associated with the item, the icon and any command line parameters.

In the example dialog shown the "Item Details" show the Windows Control Panel icon, the name of the program (CONTROL.EXE) and the file from which the icon shown was extracted (in this case also CONTROL.EXE). The "Command Line" for this item is empty.

Done

Selection of this button will close the "Add Program Manager Group" dialog.

Add

Selection of this button will "Add" the highlighted item (or items if there are more than one highlighted)

from the "Items" list box to the Launcher.

Select All

Selection of this button will highlight all items in the "Items" list box. This method makes it more convenient to add more than one (or all) the applications in a specific group rather than select the "Add" button for each item.

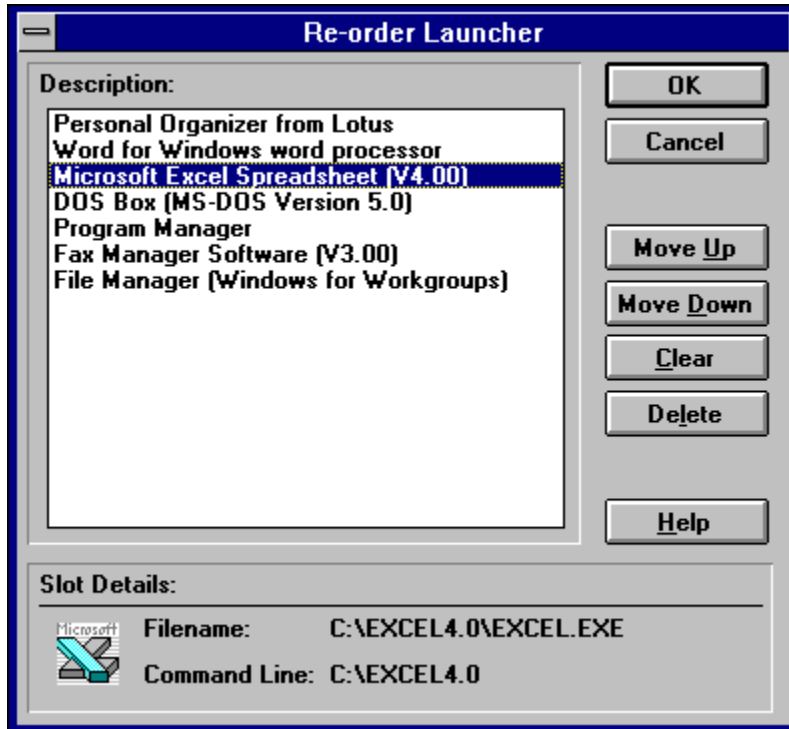
Help

Selection of this button will display this section of the PowerBar help system.

Re-order Launcher Dialog

The Re-order Launcher dialog is displayed when the "Order..." button is selected from the "Configure Launcher" dialog. This dialog shows all the programs currently Program Manager groups and the applications defined within these groups in your system.

The Re-order Launcher dialog is shown below:



The various fields on this dialog are described below:

Description

This list box shows the description field of all the items currently displayed on the Launcher. Empty slots on the Launcher are shown with the text "None".

In the example dialog shown above the description relates to the Microsoft Excel Spreadsheet program.

Move Up

Selection of this button will move the currently highlighted item up one place in the Launcher.

Move Down

Selection of this button will move the currently highlighted item down one place in the Launcher.

Clear

Selection of this button will blank the currently highlighted slot but will not change the position of any of the other items currently in the Launcher.

Delete

Selection of this button will remove the item from the Launcher strip (and move ALL items in the list below the selected item up one slot).

Item Details

The "Item Details" section is used to display information relating to the currently selected item from the "Items" list box. The information shown gives the name of the executable file associated with the item, the icon and any command line parameters.

In the example dialog shown the "Item Details" show the Microsoft Excel spreadsheet icon, the name of the program (EXCEL.EXE). The "Command Line" for this item is empty.

OK

Selection of this button accepts the new order definition for the Launcher and will recreate the Launcher according to the new values.

Cancel

Selection of this button will close the Re-Order Launcher dialog without any action being taken.

Help

Selection of this button will display this section of the PowerBar help system.

