

Contents

Help topics available for LaunchPad Application are listed below. Use the scroll bar to see items that not currently visible in the help window.

To learn how to use Help press the F1 key or choose Using Help from the Help menu.

To read the help information sequentially, use the Browse push-buttons or the buttons labeled ">>" and "<<".

LaunchPad Application

[Overview](#)

[Registration](#)

[Disclaimer](#)

[Copyright](#)

[Shareware Agreement](#)

[Product Support](#)

[Tips and Hints](#)

System Functionality

[Starting with command line](#)

[Automatic Save](#)

[System Menu Options](#)

[Drag and Drop](#)

[Remote Access](#)

[System Option Dialog](#)

[Batch File/Log File Editors](#)

Application Interface

[Menu Options](#)

[ToolBar Buttons](#)

[Accelerator Keys](#)

Events

[Definition](#)

[Adding](#)

[Editing](#)

[Enabling](#)

[Description Properties](#)

[Schedule Properties](#)

[Action Properties](#)

[Option Properties](#)

[Keys Properties](#)

[Duration Properties](#)

[Sending Key Strokes](#)

Misc

[Index](#)

[Glossary](#)

Application Overview

What Is LaunchPad

LaunchPad is a versatile windows application for running applications automatically or displaying message at a given time. The LaunchPad Application supports features you expect in any windows program like toolbars, status bars, drag and drop and font selection. Launchpad is available for both 16 bit and 32 bit systems

LaunchPad's many options for its events, make it one of a kind in its implementation and versatility.

LaunchPad provides functionality such automatic reschedule, disable after execution, log to file, automatic save, remote access and more.

How Can LaunchPad Be Used

LaunchPad is a scheduling utility with versatility as one of the top criteria during its development.

You can use LaunchPad to handle those chores that need to be run, but are better run unattended to optimize your computer time. Things like disk optimization, backups, daily reports etc.

You can use LaunchPad you to remind you of those routine chores by leaving message or reminding you by launching those application used during your routine chores. Billing, Accounting, To Do List, Diary, Appointments.

LaunchPad with its ability to save schedule files could be use on the same machine by multiple people with different requirements.

You could also use LaunchPad just as a convenient place to launch or favorite applications. Create events for your applications, Disable scheduling, and sort by description. You now have all or favorite application in one place and saved as your own file.

LaunchPad's versatility is there for your needs and imagination.

Registration

Order By Check or Money Order

Print and Fill Out the order form and mail with check or money order to:

DataComp
4450 California Ave. Suite K-165
Bakersfield, Calif. 93309

To Print the order form click on Order Form below and pull down the help file menu and select print topic.

Payments must be made in US dollars or drawn on a US bank.

[Order Form](#)

Order By CompuServe

CompuServe

To register through CompuServe, you need to have a CompuServe account.

Log on to CompuServe. At any prompt type "GO SWREG"
Select registration Id# "7287".

The registration fee will be billed to your CompuServe account.

THE ABOVE NUMBERS ARE FOR ORDERS ONLY. Any questions about the status of the shipment of the order, registration options, product details, technical support, volume discounts, dealer pricing, site licenses, etc, must be directed to DataComp. at CIS Email 76172,3452 or the address below.

DataComp
4450 California Ave K-165
Bakersfield, CA 93309

Order Form - LaunchPad for Windows95

Name: _____

Company: _____

Address: _____

City.: _____ State: ____ Zip Code _____

Please check one: 5.25" Disk ____ 3.5" Disk ____ Either Size ____

Single Copy ____ copies at \$19.95 each = _____

CA Residents add local sales tax (7.25%) + _____

Shipping and Handling

United States.....\$6.00
Mexico and Canada.....\$8.00
All Others.....\$10.00 + _____

Total Amount _____

Send Completed Form and Payment To:

DataComp
4450 California Ave. Suite K-165
Bakersfield, CA 93309

Disclaimer

This product is provided "as is" without representation of warranty, either expressed or implied.

The entire risk as to the use of this product is assumed by the user. In no event will DataComp or their estate be liable for any damages direct, direct, incidental or consequential resulting from any defect in the product.

If you do not accept these terms you must cease using this product forth with and destroy the program, the documentation and all copies thereof.

Copyright

This program and its related documentation are copyright. The owner is DataComp. All rights reserved. You may not use, copy, modify, or transfer the programs, documentation, or any copy except as expressly provided in the shareware agreement.

© DataComp 1995.

Shareware Agreement

This product is Shareware and its continued development can only be supported by YOU This license allows you to use this software for evaluation purposes without charge for a period of 30 days. If you use this software after the 30 day evaluation period a registration fee is required. One registered copy of LaunchPad may be used by a single person who uses the software on one or more computers or to a single workstation used by multiple people. If you continue to use this product after a reasonable trial period then

please
register it.

Product Support

Product Support for LaunchPad is available through one of the following:

Compuserve

Direct questions to: James Hall 76172,3452

America On Line

Direct questions to: James Hall JDHall8862

Write To :

DataComp
4450 California Ave. Suite K-165
Bakersfield, Calif. 93304

Tips and Hints

This section contains information that might be helpful to you in setting up a running LaunchPad. This information comes from many sources such as commonly ask question from other users and tips shared with us from users. Also we try to include what knowledge we have about how LaunchPad operates that might not be as fully described in the Help Topics.

[Reschedule If Past Due Option](#)

[Enable Scheduling Menu Option](#)

[DOS Applications](#)

Reschedule If Past Due Option

When would I use this option ?

Well consider this option when you have a event that you want to run regularly but it doesn't absolutely have to run. For example, I have a daily event that defragments my drive during my off hours. If for some reason this event became past due, it's not a event I consider to be absolutely needed everyday. So by selecting the Reschedule if Past Due option, the next time the application evaluates this event and finds it is past due it will not launch the event and interrupt my computer time, but will schedule it for the next day at its original time.

Enable Scheduling Menu Option

This menu option found in the System Menu is extremely useful for doing maintenance to your schedule file. By unchecking this option you can proceed with your maintenance without interruptions from scheduled events. After which check this option and your scheduling will resume normally.

One user has found this to be a favorite option. As a network administrator he maintains several schedule files throughout the network. By unchecking this option on his own copy of the application he is able to work on the files that are remotely running without having to deal with events that are currently launching from the remote sites.

DOS Applications

Screen Savers prevent DOS Applications from running in the background. The application will become iconized and will wait there until the user opens that icon again at that time it will continue on with its operation. One way to avoid this problem is to use a PIF file to run the application. In the pif file editor check the allow background processing and run in a window. This allows the application to act more like a window and continue it's process. For more on PIF files see the windows help file.

Command Line

The LaunchPad application can be started loaded with a already existing schedule file. You accomplish this by passing the file path and name as a command line parameter. Example: < launchpd.exe c:\launchpd\myfile.lpd >

Automatic Save

When LaunchPad is running unattended and operating normally, the schedule file is saved to disk each time a event is fired and rescheduled. This keeps the schedule file up to date at all times.

System Menu Items

System menu has several menu options for control of the LaunchPad Application. Along with the normal menu options (minimize, maximize, size, move) are the following options used in the application.

- Menus - Allows you to toggle on and off the applications menu bar. When checked the application menu bar is visible. When unchecked the menu bar is hidden.
- Enable Scheduling - This option allows you to globally enable and disable LaunchPad's ability to launch events. When checked events can be launched, unchecked disables all events from launching.
- Always On Top - When checked LaunchPad will stay visible on top of other application without interfering with the windows operations. This can be handy if you want to see your scheduler at all times.
- Close - Selecting this option will quits the application.
- Switch To - Will bring up the Window's Task Manager.

Drag and Drop Support

The LaunchPad application supports drag and drop for adding events to the currently loaded LaunchPad file. When you drag a valid program file and drop on the main window the application adds this program as a new event.

To add a program to the currently loaded schedule file

- 1 Click on a file in the Windows 3.1 File Manager
- 2 While holding down the mouse button, drag (move) the mouse pointer to the LaunchPad window. If you've minimized LaunchPad, you can drag the files to the minimized icon.
- 3 Release the mouse button to drop the file.

To add multiple files to a schedule using Drag and Drop, select the desired files in the File Manager before dragging them to LaunchPad.

Remote Access

When LaunchPad is running and the Auto Load Changes to Schedule is activated, LaunchPad constantly monitors the original file that is loaded for any modifications. If it detects that this file has been changed it will reload the modified version.

This means that if you have remote access to the application, you can modify a schedule file you know is running, and the application which is running this file can pick up those changes.

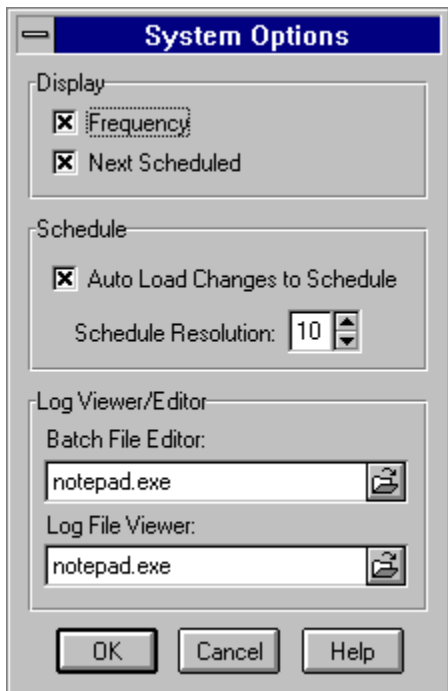
Related Topics:

[System Options Dialog](#)

System Option Dialog

System Option Dialog allows you to define options that effect LaunchPad's main window and operation. It also allows you to select editors to be used for viewing and editing batch files and log files.

- In the Display section you can toggle off and on the Frequency column and the Next Scheduled column. If the box is checked then the column will appear in the main window with those details for each event. If not checked the column is not shown in the main window.
- Auto Load Changes to Schedule check box enables LaunchPad's ability to receive changes from a remote access. When checked LaunchPad monitors the original schedule file for changes. When changes are made to that file LaunchPad will automatically load the changed file.
- Schedule Resolution is where you define in seconds how often LaunchPad looks at the schedule for events ready to launch. What this means for example is that if you set this number to 10 for example, every 10 seconds LaunchPad will look at the current schedule for events that need to run, and then sets idle until the next 10 seconds have passed. This allows you to maximize Window's processing time based on what best fits with your computing needs.
- The Log View/Editor you can define the editors that you want to use for viewing log files and the editor you want to use for editing bat files. By default Window's Notepad.Exe is used for the editor. You can though select any editor you have available. You can defined one editor for viewing log files and a different editor for editing batch files. The push buttons will bring up a path and file selection box to help you find the editor you wish to use. These selection will be saved in the desktop file when you exit the application, and will be available the next time you start LaunchPad.



Related Topics:

[Remote Access](#)
[View the Log File](#)

File|View the Log File

This menu option will allow you to view any log files that are associated with the currently load event schedule. When selected the application will search all the events for any log files that have been defined, as part of the event options. If more than one log file is defined, a selection box will appear and you will be able to choose the file you want to view. If only one log file is defined the file will be loaded automatically in the editor you have defined in the system options dialog.

Equivalent Toolbar button. <None>

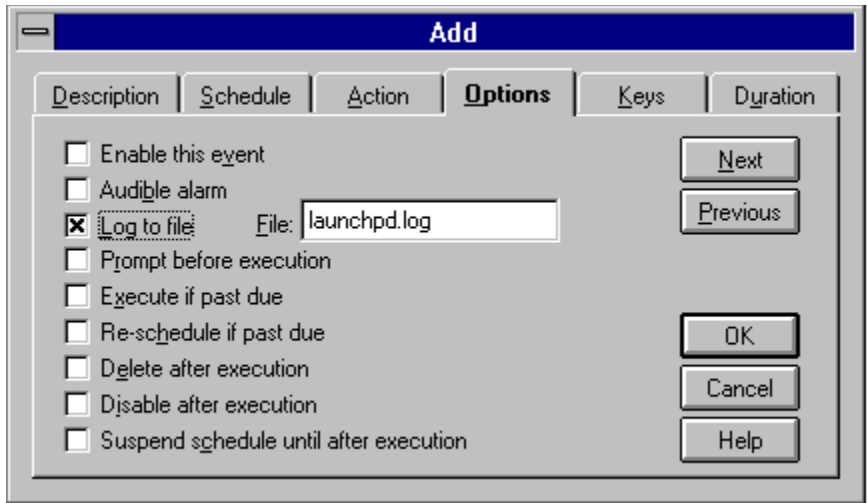
Related Topics:

[System Options](#)

[Options Properties](#)

Options Properties

- Enable The Event -- Check this box to activate this event. When unchecked the Disabled label shows in the main window.
- Audible alarm -- Check this box if you want the event to Beep when it runs.
- Log To File -- Check this box if you want the date, time and description to be written to a log file when it runs. When this option is checked a box will appear and allow you to define the file name you wish the event to log to.
- Prompt Before Execution -- Checking this box the event will notify you before running. You have the chance here to stop the event if you desire and the event will be rescheduled normally.
- Execute If Past Due - Check this option if you want LaunchPad to run this event even if it is past due. This comes in handy when LaunchPad is not always running.
- Re-Schedule if Past Due - Check this option if you want LaunchPad to reschedule a event if past due without launching the event.
- Delete After Execution -- Checking this option will delete the event after it has ran from the scheduler file.
- Disable After Execution -- Checking this option will disable the event after it runs. This is equivalent to a One Time Frequency.
- Suspend Schedule Until After Execution -- This option will stop the application from launching any other event until this event is completed. (the application has quit). Currently this option is only effective with Window Applications. Running a DOS application or PIF file will not stop the application fro running the next event.



Related Topics:

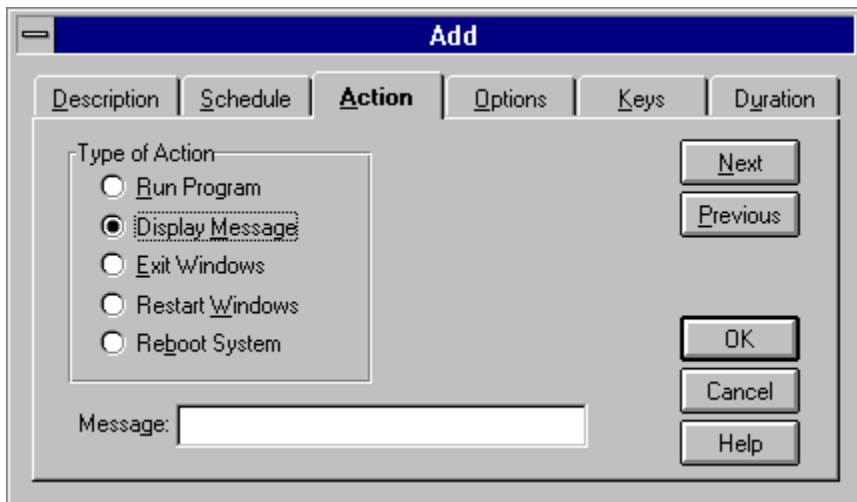
[Edit Dialog Buttons](#)

[Tips and Hints](#)

Edit Dialog Buttons

The five buttons on the right side of the edit dialog box operate the same for all four tab dialog screens.

- Previous -- This button will bring to the front the previous tab dialog screen. For example, if you are in the "Description" tab dialog screen and press this button the "Options" tab dialog screen will be brought to the front..
- Next -- This button will bring to the front the next tab dialog screen. For example, if you are in the "Description" tab dialog screen and press this button the "Schedule" tab dialog screen will be brought to the front.
- OK -- This button will close the Edit Dialog Box and implement any changes that have been done to the event that was being edited.
- Cancel -- This button can be used if you want to disregard any changes that have been made. This button will close the edit dialog box and return the event to its previous state. If adding a event the event will not be added.
- Help -- This button will get you the help file on whichever tab dialog screen that is currently on top.

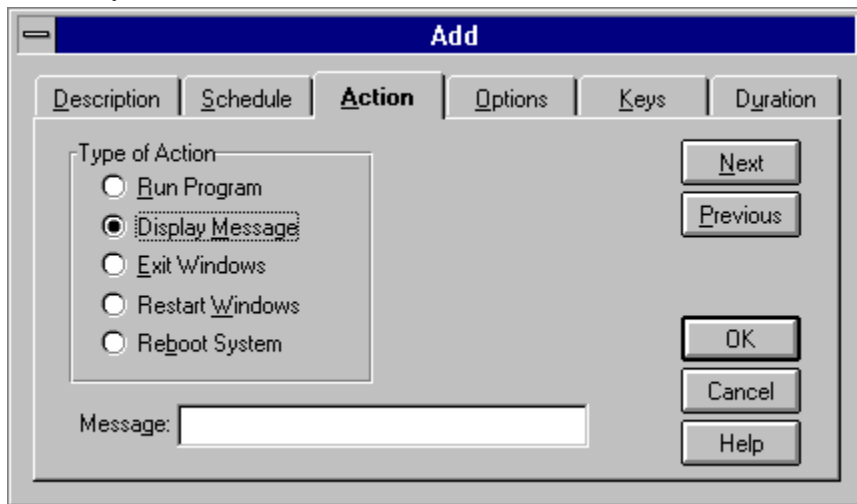


Related Topics:

- [Action Properties](#)
- [Description Properties](#)
- [Option Properties](#)
- [Schedule Properties](#)

Action Properties

- Here you define the type of event you desire. By default the Run Program button is selected. The following describes the available options.
- Run Program - Select this option if the event is to run a valid program.
- Display Message - Event will display message to the screen, When you select this option a area to type the message to be displayed will become visible.
- Exit Windows - This option will shut down windows and return to the DOS environment. Note that if any program running requires confirmation before exiting at the time this event is launched, you will need to handle manually.
- Restart Windows - This option will shut down Windows and then restart Windows normally. Note that if any program running requires confirmation before exiting at the time this event is launched, you will need to handle manually.
- Reboot System - This option will perform a complete reboot of the computer. The computer will reboot normally. This would be the same as shutting down Windows and using the Ctrl+Alt+Del Keys.



Related Topics:

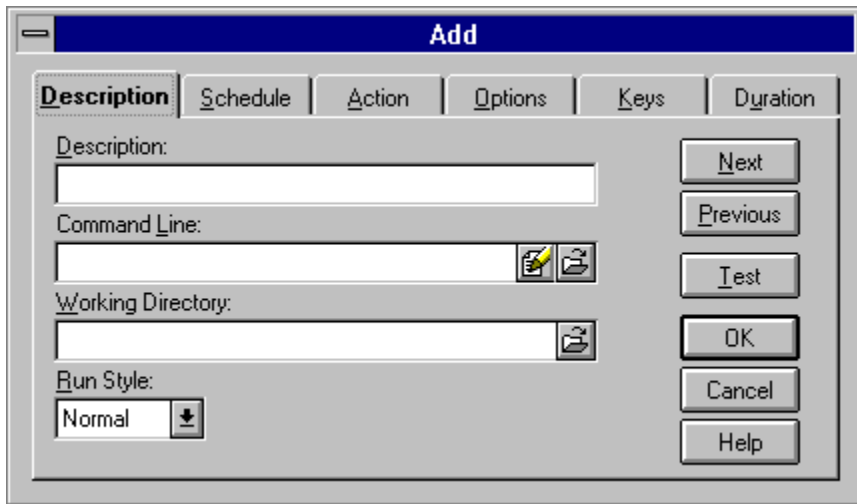
[Edit Dialog Buttons](#)

Description Properties

- Description -- This is the text you input to describe the event. This text is shown in the main window in the description column.
- Command Line -- This is the actual program name to be ran. This could be any valid *.exe, *.pif, *.bat, *.com file name. This should include the drive and path. You can press the folder button to the right of this control to use the standard select file dialog box to select the file.

If the event is a batch file you can use the edit button to the right to edit that batch file. Pressing the edit button will launch the editor that is defined in the system options dialog with the batch file. You can then edit and save the file and continue on with defining your event.

- Working Directory -- Working Directory is the directory where the executable finds associated files that are required to run the program. (Most programs do not require an entry in this field. occasionally however, a program will refuse to run properly unless it is specifically told where to find other program files.) LaunchPad will change to this directory when running the event. You can press the button to the right of this control to use the standard select file dialog box to select the directory.
- Run Style -- Here you select how the program is to be started. maximized, minimized, normal and DOS. For more information on the different styles see "Run Styles".
- Test Button -- Can be used to test the event and return to this dialog box.



Related Topics:

[Edit Dialog Buttons](#)

[Run Styles](#)

Run Styles

The different run styles available in the event edit dialog are defined below.

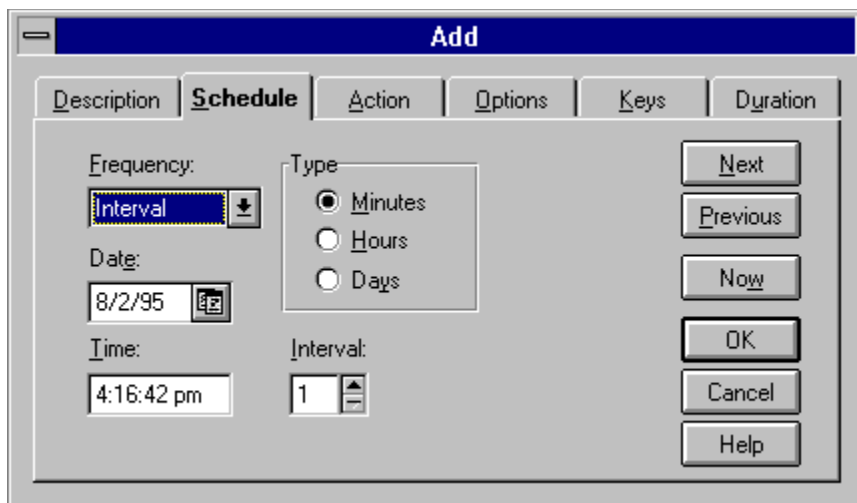
- Normal - For window programs will be launched in what ever manner is normal for this application. If the application normally launches in a less than maximized window it will be launched this way.
- Minimized - This option will launch the event in a icon state.
- Maximized - This option will launch the event in a full window.
- DOS - This option will quit windows, and launch the desired application in the DOS environment. When the event is completed Windows will be restarted.

Related Topics:

[Description Properties](#)

Schedule Properties

- Frequency -- Here you have the ability to select at what interval this event will run. The options here are One Time, Hourly, Daily, Weekly, WeekDays, WeekEnds, Monthly, Yearly and Interval (By selecting interval you'll see the additional controls that effect this frequency option. If the event is enabled the select option is visible in the main window.
- Date -- Here you type the first date you want the event to run. The application will not allow a invalid date such as 1/32/95. The required format is mm/dd/yy. While on this control there are some quick keys to help in setting the date. The "PgUp" and "PgDn" keys can increment the month and the "+" and the "-" keys can increment the days. Also by clicking the date button to the right will bring up the point and click calendar.
- Time -- Here you type the first time you want the event to run. The required format is hh/mm/ss AM/PM. There are also some quick keys to help in setting the time. The "PgUp" and "PgDn" keys can increment the minutes while the "+" and the "-" keys can increment the seconds.



The image shows a screenshot of a software dialog box titled "Add". The dialog has several tabs: "Description", "Schedule", "Action", "Options", "Keys", and "Duration". The "Schedule" tab is currently selected. Inside the "Schedule" tab, there are several controls:

- Frequency:** A dropdown menu with "Interval" selected.
- Date:** A text box containing "8/2/95" and a small calendar icon to its right.
- Time:** A text box containing "4:16:42 pm".
- Type:** A group box containing three radio buttons: "Minutes" (selected), "Hours", and "Days".
- Interval:** A text box containing "1" and a small spinner control.

On the right side of the dialog, there are six buttons: "Next", "Previous", "Now", "OK", "Cancel", and "Help".

Related Topics:

[Edit Dialog Buttons](#)

File Editing

The application provides quick access for viewing and editing batch files and log files. You can specify the editor or editors of choice in the [system options dialog](#). When an event is a batch file you'll be able to access that file from the command line edit box where you define the command line. This comes in handy when testing and when modifications are needed. Log files can be viewed by selecting the View Log File option in the file menu. The application will search all the events for defined log files and present you with a list to choose from. If only one log file is defined it will automatically open using the editor of choice.

Related Topics:

[Viewing Log Files](#)

[System Options](#)

[Description Properties](#)

Menu Options

File -- Options for handling all file operations

[New](#)

[Open](#)

[Close](#)

[Save](#)

[Save As](#)

[View the Log Files](#)

[Exit](#)

Events -- Options for handling all event operations

[Add](#)

[Edit](#)

[Copy](#)

[Delete](#)

[Enable Event](#)

[Information](#)

[Set Event Defaults](#)

[Auto Launch](#)

[Launch](#)

[Re-Schedule](#)

Options -- Options for handling available system operations

[Sort by Description](#)

[Sort by Schedule](#)

[Sort by Frequency](#)

[Fonts](#)

[Status Bar](#)

[Control Bar](#)

[Label Bar](#)

[Save Settings On Exit](#)

[Save Settings Now](#)

[System Options](#)

Help -- Available Help Options

[Contents](#)

[Using Help](#)

[About LaunchPad](#)

File|New

This option will close the current LaunchPad file and clear the main window. The Application is now ready to create a new file. You can start a new file by adding a new event.

Equivalent toolbar button, <None>

Related Topics:

[Adding Events](#)

Adding Events

LaunchPad gives you four ways to add a event to the current File.

- The Menu option Add... found under the Event menu option.
- The Add button on the toolbar.
- The Drag and Drop functionality is also supported.
- Using the Accelerator key <INS>

Using one of these methods will bring up the event edit dialog box. Allowing you to start a new event. After you complete defining the event's properties and press the OK button the event will be added to the main window. If you decide to use the cancel button from the dialog button then this event will not be added to the main window.

Related Topic:

[Description Properties](#)

[Schedule Properties](#)

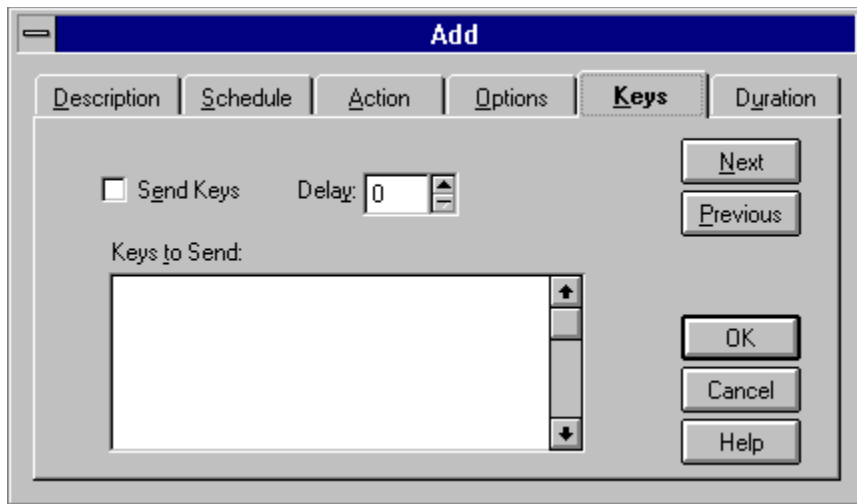
[Action Properties](#)

[Option Properties](#)

[Keys Properties](#)

Keys Properties

- Send Keys - This check box determine whether or not the send key property is enabled for the current event.
- Delay - Enter here the amount of time that LaunchPad will pause before sending the Key strokes.
- Keys to Send - You use the area to define the actual key strokes to send as part of this event. For more information see "Sending Keystrokes".



Related Topics:

[Event Edit Buttons](#)
[Sending Keystrokes](#)

Send Keys Option

You can define a series of keystrokes to automatically send as part of the event. You define this in the "Keys" section of the event edit box.

Each key is represented by one or more characters. To specify a single keyboard character, use the character itself. For example, to represent the letter A, use A for key text. If you want to represent more than one character, append each additional character to the one preceding it. To represent the letters A, B, and C, use ABC for key text.

The plus sign (+), caret (^), percent sign (%), tilde (~), and parentheses () have special meanings to SendKeys. To specify one of these characters, enclose it inside braces. For example, to specify the plus sign, use {+}. Brackets ([]) have no special meaning to SendKeys, but you must enclose them in braces as well, because in other applications for Microsoft Windows, brackets do have special meaning that may be significant when dynamic data exchange (DDE) occurs. To send brace characters, use {} and {}. To specify characters that aren't displayed when you press a key (such as Enter or Tab) and keys that represent actions rather than characters, use the key codes defined in the SendKeys Codes.

Key Codes

To specify keys combined with any combination of Shift, Ctrl, and Alt keys, precede the regular key code with one or more of the following codes:

Key	Code
Shift	+
Control	^
Alt	%

To specify that Shift, Ctrl, and/or Alt should be held down while several other keys are pressed, enclose the keys' code in parentheses. For example, to have the Shift key held down while E and C are pressed, use "+(EC)". To have Shift held down while E is pressed, followed by C being pressed without Shift, use "+EC".

To specify repeating keys, use the form {key number}; you must put a space between key and number. For example, {LEFT 42} means press the Left Arrow key 42 times; {h 10} means press h 10 times.

Along with the sendkeys defined in the Key Codes there are the following special commands that can be sent as sendkeys. The syntax for sending these commands is the same as above the command needs to be within the braces.
i.e . {Delay}.

- Delay - This command will wait a determine time before sending the next key to the event. You specify the time in milliseconds following the command. For example {Delay 1000} will wait 1 second before execution of the next key.
- Date - This command will send the current date as text. You can also define date math following the command. For example {Date 1} will send tomorrow's date, {Date -1} would send yesterday's date. You must leave a space between the command and the number.

- Time - The Time command sends the current time as text. You can also do math on this function by defining the amount of seconds after the time command. For Example {Time 60} would send the current time + one minute and {Time -60} would send the current time minus one minute..
- Day - The day command will send the numeric value for the day of the current date. You can also do math on this function by defining the amount of days after the command. For example {Day 1 } would add one the current day and Day -1 would subtract 1 day.
- Month - The month command will send the numeric value for the month of the current date. You can also do math on this function by defining the amount of months after the command. For example {Month 1} would add one the current month.
- Year - The Year command will send the numeric value for the Year of the current date. You can also do math on this function by defining the amount of Years after the command. For example {Year 1} would add one the current year.
- Hour - The Hour command will send the numeric value for the current hour. You can also do math on this function by defining the amount of hours after the command. For example {Hour 1} would add one hour {Hour -1} would subtract a hour.
- Minute - The Minute command will send the numeric value for the current minutes. You can also do math on this function by defining the amount of minutes after the command. For example {Minute 1} would add one minutes {Minute -1} would subtract a minutes.
- Second - The Second command will send the numeric value for the current second. You can also do math on this function by defining the amount of seconds after the command. For example {Second 1} would add one second {Second -1} would subtract a second.

Key Codes

Key	Code
Shift	+
Control	^
Alt	%
BackSpace	{BKSP}
Break	{BREAK}
Caps Lock	{CAPSLOCK}
Clear	{CLEAR}
Del	{DELETE}
Down Arrow	{DOWN}
End	{END}
Enter	{ENTER} or ~
Esc	{ESC}
Help	{HELP}
Home	{HOME}
Ins	{INSERT}
Left Arrow	{LEFT}
Num Lock	{NUMLOCK}
Page Down	{PGDN}
Page Up	{PGUP}
Print Screen	{PRTSC}
Right Arrow	{RIGHT}
Scroll Lock	{SCROLLLOCK}
Tab	{TAB}
Up Arrow	{UP}
F1	{F1}
F2	{F2}
F3	{F3}
F4	{F4}
F5	{F5}
F6	{F6}
F7	{F7}
F8	{F8}
F9	{F9}
F10	{F10}
F11	{F11}
F12	{F12}
F13	{F13}
F14	{F14}
F15	{F15}
F16	{F16}

File|Open

This menu option will allow you to open a existing LaunchPad File. The Application will bring up the open file dialog box with the default extension. You can select different drives, and directories from this dialog box. If you select a new file LaunchPad with save and close the current file and open the one you selected.



Equivalent Toolbar button.

Related Topics:

File|Close

This menu option will save and close the currently opened LaunchPad file and clear the main window list box. At this point you can either start a new LaunchPad file or open a existing Scheduler file.

Equivalent toolbar button. <None>

Related Topics:

File|Save

This menu option will save the current LaunchPad file. If the current file has not been previously saved, the application will bring up the Save As dialog box. From this dialog box you will be given the opportunity to name the file and the drive and directory to save to. Previously saved files are saved under it's current file name.



Equivalent toolbar button.

Related Topics:

File|Save As

This menu option brings up the Save As dialog box and allows you to name and save the current LaunchPad file. You can specify the drive, directory, and name for the file. This option is automatically called if the current file has not been previously saved and you select the close option or quit the application.

Equivalent toolbar button. <None>

Related Topics:

File|Exit

This menu option quits the application. If there are changes made to the currently opened LaunchPad file the application will bring up a message box and prompt you Do you want to save the current file. If you select yes then the appropriate actions for saving a file will be called.

Equivalent toolbar button. <None>

Related Topics:

Event|Add

This is one of the available methods for adding a new event to the current LaunchPad file.



Equivalent toolbar button.

Related Topics:

[Adding Events](#)

Event|Edit

This is one of the available ways to edit the currently highlighted event. To get more information see [Editing Events](#).



Equivalent toolbar button.

Related Topics:

[Editing Events](#)

Editing Events

There are several ways to edit a event from the current scheduler file,

- The Menu option Edit... in the Event pull down.
- The Edit button on the toolbar.
- Double clicking the left mouse button over the currently highlighted event.
- Pressing the <Enter> key for the currently highlighted event.

Using one of these methods mentioned above will bring up the event edit dialog box. From this dialog box you will be able to redefine any of the Event's properties. After you complete the changes you can use the OK button from the dialog box to save the changes you made. If you change your mind to any changes use the cancel button to return the Event's properties to their previous state.

Whenever you are in the event edit box the application is disabled and does not run any events until you close the edit box.

Any time changes are made to any event, the application then recognizes that a save is needed when you either close the current Scheduler file or quit the application and will prompt you for a save.

Related Topics:

[Description Properties](#)

[Schedule Properties](#)

[Action Properties](#)

[Option Properties](#)

[Keys Properties](#)

[Edit Dialog Buttons](#)

Event|Copy

This option will create a new event and fill the events properties with the properties of the currently highlighted event in the main window. The Event edit dialog will be brought up with for the new event. If you select OK from the event edit dialog the new event is then added to the main window and current LaunchPad file.



Equivalent toolbar button

Related Topics:

Event|Delete

This option will remove the currently selected event from the main window. The application will then redraw the main window.



Equivalent toolbar button.

Related Topics:

Event|Enable Event

This menu option is one of the methods to toggle a event from enabled and disabled.



Equivalent toolbar button.

Related Topics:

[Enabling Events](#)

Enabling Events

There are four ways for enabling and disabling a Event in the current LaunchPad file.

- Menu option Enable Event found in the Event pull down.
- The Enable button on the toolbar.
- The event edit dialog box under options
- Accelerator key <CTRL+E>

You can use either of the two methods above to toggle the currently highlighted event in the main window. In the Frequency column in the main window you can determine the status of each event. When a event is enabled the frequency column displays the frequency for that event. When the event is disabled the frequency column will display "disabled".

When a event is toggled the event has been changed which tells the application that a save is required when you either close the current Scheduler file or quit the application.

Related Topics:

[Option Properties](#)

Event Information

This menu option is one of the ways to see the latest information for the currently selected event. For more information see related topic.



Equivalent toolbar button.

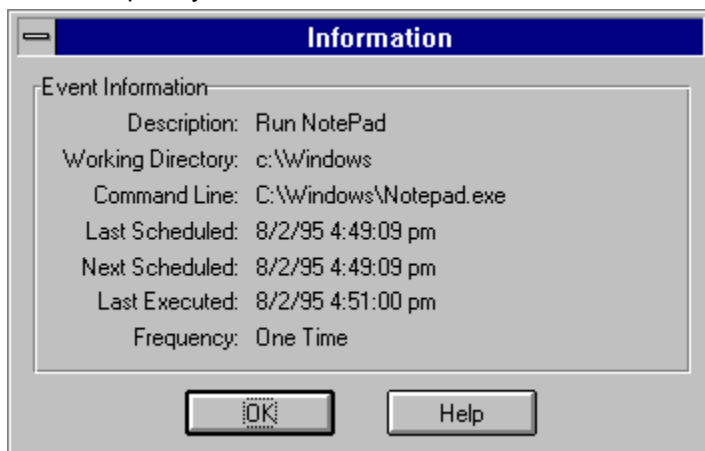
Related Topics:

[Event Information Dialog](#)

Event Information Dialog

This dialog box provides information for the currently highlighted event in the main window. There are several different items of information provided here.

- Description -- This is the description displayed in the main window.
- Working Directory -- This is the directory define in the description properties edit screen.
- Command Line -- Defined in the description properties edit screen.
- Last Scheduled -- This is the last known scheduled time before the application rescheduled this event. This is the only place this information is found.
- Next Scheduled -- This is the date and time for this event to be ran.
- Last Executed -- This is the actual date and time the application ran this event automatically. This date and time may not be identical to the last scheduled information because of any number of reasons. This information can only be found in this dialog box.
- Frequency -- This is how often this event is scheduled to be ran.



Event|Set Event Defaults

This menu option allows you to define a default event. After which each time you add a event to the current file the add dialog will start with those default values in place. For example if you normally add messages to LaunchPad and normally delete those messages after execution, you can set your default to be already set the Action to "Message" and the "Delete After Execution" option checked. All of the options provided for a event can be predefined here.

Equivalent toolbar button. <None>

Related Topics:

[Events](#)

Events

A Event is a message you wish to display or a program you want to run at a certain time at a certain frequency. Each event has a set of properties such as description, options, frequency, time etc.

For more information on actions available by this application select one of the following topics.

Related Topics:

[Adding Events](#)

[Editing Events](#)

[Enabling Events](#)

[Event Information Dialog](#)

Event|Auto Launch

This menu option will launch the currently selected event now. When this option is used all events options are implemented. The event will update it's schedule log to file etc. Unlike the "Launch" menu item that does not implement event options and reschedule. This option is handy for launching a event without having to edit the events schedule.

Equivalent toolbar button. <None>

Event|Launch

Event|Launch

This option will run or display the currently highlighted event. Use this option when testing a event or when you just want to run a event now. When using the launch command the events next schedule date is not updated. Also none of the events properties such as logging to file, disabled after execution, prompt before executions, etc. are enabled when using this option.



Equivalent toolbar button.

Related Topics:

Related Topics:

Event|Re-Schedule

If a event's options are not set for reschedule if pass due or run if pass due, and this event is current pass due. This menu option can be used to quickly re-schedule the event for the next scheduled time without having to edit the event.

Equivalent toolbar button. <None>

Related Topics:

Options|Sort by Description

Selecting this menu option will sort the events in the main window by the description. This does not effect in any way the actual schedule for the event. The events will still launch at it's defined time. LaunchPad will save the last known sort option when you quit the application.

Equivalent toolbar button. <None>

Related Topics:

[Select Sort from Label Bar](#)

Sort from Label Bar

You can select your sort option by clicking on the label bar over the desired label. i.e "Description". This performs the same action as selecting the sort option from the menu.

Option|Sort by Schedule

Selecting this menu option will sort the events in the main window in by the actual scheduled date and time. After a event has rescheduled due to running, the application will repaint the main window maintaining the correct sort option. LaunchPad will save the last known sort option when you quit the application.

Equivalent toolbar button. <None>

Related Topics:

[Select Sort from Label Bar](#)

Options|Sort by Frequency

Selecting this menu option will sort the events in the main window in by the frequency . This does not effect in any way the actual schedule for the event. The events will still launch at it's defined time. After a event has rescheduled due to running, the application will repaint the main window maintaining the correct sort option. LaunchPad will save the last known sort option when you quit the application.

Equivalent toolbar button. <None>

Related Topics:

[Select Sort from Label Bar](#)

Options|Fonts

This option will allow to select the font and size you wish to use in the main window for the event list. Selecting this option will bring up the standard Windows Font Select Dialog Box. From this box you can select the any font and size your computer currently supports. Also you can select the style of font as well. LaunchPad will save the selection each time you quit the application which enables LaunchPad to select your previous options the next time you run the program.

Equivalent toolbar button. <None>

Related Topics:

Options|Status Bar

The Application allows you to select whether or not the status bar at the bottom of the main window is visible. The application will save the current state of this option each time you quit the application, and return the last known state the next time you run this application.

Equivalent toolbar button. <None>

Related Topics:

Options|Control Bar

The Application allows you to select whether or not the control bar at the top of the main window is visible. The application will save the current state of this option whenever you quit the application and return the last known state the next time you run this program. For information on the available control bar buttons see "Control Bar Buttons".

Equivalent toolbar button. <None>

Related Topics:

[Control Bar Buttons](#)

ToolBar Buttons

When the menu option "Control Bar" is checked and the Control bar is visible in the application, these buttons are enabled. Click on the button that you want help information on.



Options|Label Bar

The Application allows you to select whether or not the label bar at the top of the main window is visible. The application will save the current state of this option each time you quit the application, and return the last known state the next time you run this application.

Equivalent toolbar button. <None>

Related Topics:

Options|Save Settings On Exit

When this option is checked the application will save all of the status of the toggled options, size of the windows, and the position of the main window when you quit the application. If this option is unchecked when you quit the application, the next time you start the application LaunchPad will use whatever settings were saved previously.

Equivalent toolbar button. <None>

Related Topics:

Options|Save Settings Now

Selecting this menu option will force a save of the system file items such as the status of the toggle options, screen size and position, as they are at this time.

Equivalent toolbar button. <None>

Related Topics:

Options|System Options

Selecting this menu option will bring the system option dialog box which will allow you to define options that effect LaunchPad's main window layout as well as it's operation. For more details see "[System Options Dialog](#)"

Equivalent toolbar button. <None>

Related Topics:

[System Options Dialog](#)

Help|Contents

The option opens the help file and places you on the Content page.

Equivalent toolbar button. <None>

Related Topics:

Help|Using Help

Brings up the instruction for Microsoft Help.

Help|About

This option brings up the Application's About box which will display the currently running version of LaunchPad.

Equivalent toolbar button. <None>

Related Topics:

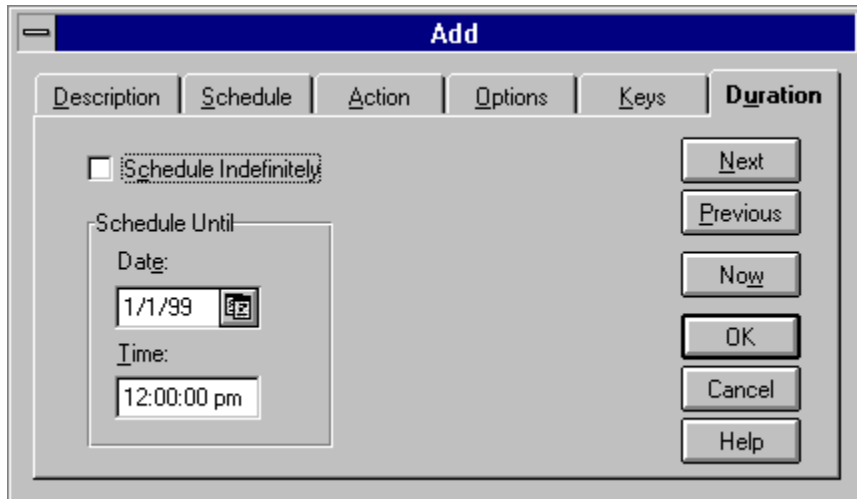
Accelerator Keys

LaunchPad provides several accelerator (short cut) keys allows you to easily navigate through the application. The following is a list of all accelerator keys available.

Key	Definitions
Alt+F4	Exit Application
Ctrl+Esc	Switches between running applications
F1	Help
Ctrl+N	Create a new LaunchPad file
Ctrl+O	Open existing LaunchPad file
Ctrl+L	Close current LaunchPad file
Ctrl+S	Save current LaunchPad file
Ctrl+A	Calls the save as dialog box
Ctrl+V	Opens the log file Viewer/Editor
Ins	Add new event to current file
Enter	Edit currently highlighted event
Alt+Enter	Auto Launches highlighted event
Ctrl+Enter	Launch currently highlighted event
Ctrl+Y	Copies currently selected event
Del	Deletes currently selected event
Ctrl+E	Enables or Disable currently selected event
Ctrl+	Bring up Information dialog for currently selected event
Ctrl+F	Allows you to set the default options for a event
Ctrl+R	Re-Schedules a past due event

Duration Properties

Here you can define how long to continue to run a event. By default a event is defined to execute indefinitely. By unselecting this option you can defined a date and time that this event should quit executing. The event will run normally from it's scheduled date and time until the date and time specified here.



The image shows a screenshot of a software dialog box titled "Add". The dialog has a blue title bar and a tabbed interface. The "Duration" tab is selected and active. Inside the "Duration" tab, there is a checkbox labeled "Schedule Indefinitely" which is currently unchecked. Below this checkbox is a "Schedule Until" section containing two input fields: "Date:" with the value "1/1/99" and a calendar icon, and "Time:" with the value "12:00:00 pm". To the right of these fields is a vertical stack of six buttons: "Next", "Previous", "Now", "OK", "Cancel", and "Help".

Index

A

[About](#)

[Accelerator Keys](#)

[Action Properties](#)

[Add Button](#)

[Add](#)

[Adding Events](#)

[Auto Launch](#)

[Automatic Save](#)

B

[Button Help](#)

C

[Calendar Control](#)

[Close](#)

[Command Line](#)

[Contents](#)

[Control Bar](#)

[Copy Button](#)

[Copy](#)

[Copyright](#)

D

[Delete Button](#)

[Delete](#)

[Description Properties](#)

[Disclaimer](#)

[Drag and Drop Support](#)

[Duration Properties](#)

E

[Edit Button](#)

[Edit Dialog Buttons](#)

[Edit](#)

[Editing Events](#)

[Enable Button](#)

[Enable Scheduling](#)

[Enable](#)

[Enabling Events](#)

[Event Defaults](#)

[Events](#)

[Exit](#)

F

[File Editing](#)

[Fonts](#)

G

[Glossary](#)

H

[Help Button](#)

[Help Contents](#)

I

[Index](#)

[Information Button](#)

[Information Event](#)

[Information](#)

[Interval frequency](#)

K

[KeyCodes](#)

[Keys Properties](#)

L

[Label Bar](#)

[Launch Button](#)

[Launch](#)

M

[Menu Options](#)

N

[New](#)

O

[Open Button](#)

[Open](#)

[Options Properties](#)

[Order Form](#)

[Overview](#)

P

[Product Support](#)

R

[Registered Agreement](#)

[Registration](#)

[Remote Access](#)

[Reschedule If Past Due Option](#)

[Reschedule](#)

[Run Styles](#)

S

[Save As](#)

[Save Button](#)

[Save Settings Now](#)

[Save Settings On Exit](#)

[Save](#)

[Schedule Properties](#)

[SendKeys](#)

[Shareware Agreement](#)

[Sort by Description](#)

[Sort by Frequency](#)

[Sort by Schedule](#)

[Sort from Label Bar](#)

[Status Bar](#)

[System Menu](#)

[System Option Dialog](#)

[System Options](#)

T

[Tips and Hints](#)

[ToolBar Position](#)

[ToolBar](#)

[Topic1](#)

U

[Using Help](#)

V

[View Log Files](#)

Glossary

Add Button

This is one of the available methods for adding a new event to the current LaunchPad file.

Equivalent Menu Option. <Event|Add>

Related Topics:

[Adding Events](#)

Button Help

You can get a short description of a button's function by running the mouse over the top of a button on the toolbar. This message is also displayed in the status bar at the same time.

Calendar Control

Copy Button

This button will create a new event and fill the events properties with the properties of the currently highlighted event in the main window. The event edit dialog will be brought up with the new event. If you select Ok from the event edit dialog the new event is then added to the main window and current LaunchPad file.

Equivalent Menu Option: <Event|Copy>

Related Topics:

[Editing Events](#)

Delete Button

This button will remove the currently selected event from the main window. The application will then redraw the main window.

Equivalent Menu Option. <Event|Delete>

Related Topics:

Edit Button

This will open the event edit dialog for the currently highlighted event. To get more information see [Editing Events](#).

Equivalent Menu Option. <Event|Edit>

Related Topics:

[Editing Events](#)

Enable Button

This button is one of the methods to toggle a event from enabled and disabled.

Equivalent Menu Option. <Event|Enable>

Related Topics:

[Enabling Events](#)

Help Button

This button will open the application help file.

Equivalent Menu Option. <Help|Content>

Related Topic:

Information Button

This button will bring up the event information dialog box. For more information see Event Information.

Equivalent Menu Option. <Event|Information>

Related Topics:

[Event Information Dialog](#)

Interval frequency

When the frequency is interval you'll have the ability to specify at what frequency you want a reoccurring event to launch. You'll be able to specify whether the interval is in minutes, hours, or days). Also you will be able to select from two options as to how you want launch to reschedule the event. The reschedule from Completion Time option will maintain the interval between each launch. For example if the event is scheduled for 8:00am at 2 minute intervals and it runs at 8:01:00 am the next schedule would be 8:03 am, maintaining 2 minutes between events. If the reschedule from schedule time option is selected the event will reschedule from the scheduled time regardless of when it last launch. For example our 8:00 am event with 2 minute intervals that launched a 8:01 would be rescheduled for 8:02 am.

Launch Button

This button will run or display the currently highlighted event. Use this option when testing a event or when you just want to run a event now. When using the launch command the events next schedule date is not updated. Also none of the events properties such as logging to file, disabled after execution, prompt before executions, etc... are enabled when using this option.

Equivalent Menu Option. <Event|Launch>

Related Topics:

Open Button

This button will allow you to open an existing LaunchPad File. The Application will bring up the open file dialog box with the default extension. You can select different drives, and directories from this dialog box. If you select a new file LaunchPad with save and close the current LaunchPad file and open the one you selected.

Equivalent Menu Option. <File|Open>

Related Topics:

Registered Agreement

One registered copy of LaunchPad may be used by a single person who uses the software on one or more computers or to a single workstation used by multiple people.

Save Button

This button will save the current LaunchPad file. If the current file has not been previously saved, the application will bring up the Save As dialog box. From this dialog box you will be given the opportunity to name the file and the drive and directory to save to. Previously saved files are saved under it's current file name.

Equivalent Menu Option. <File|Save>

Related Topics:

Toolbar Position Button

The button will allow you to change the position and direction of the Toolbar. As well as the top of the application window, you can move the toolbar to the left or right side of the application window. The application will save the position of the toolbar when you quit the application.

Equivalent Menu Option, <None>

Related Topics:

