

ANYCHECK.VAL files are created and used if you have the Anyware SmartScan function activated. If you want to use the Anyware SmartScan do not delete ANYCHECK.VAL files.

Anyware FastScan



A procedure created by Anyware that optimizes the performance of the scan function, so that the same file will not be scanned more than once.

Every time a file is scanned, a portion of the file date (the seconds) is modified using a complex algorithm, to avoid having to scan the file until a change is made or a month has passed.

This procedure provides you with the fastest way to scan files and it is compatible with [Anyware SmartScan](#).

Anyware SmartScan



A procedure created by Anyware that optimizes the performance of the scan function, so that the same file will not be scanned more than once.

Every time a file is scanned, a set of parameters of the file is stored to avoid having to scan it if no changes are made. These parameters are stored in the ANYCHECK.VAL file in the same directory as the file.

File containing one or more files which are stored in a way to use less disk space.

Program or code created with malicious intentions which is able to duplicate itself

Anyware Antivirus for Windows

Contents

Scan

Protection

Tools

Information

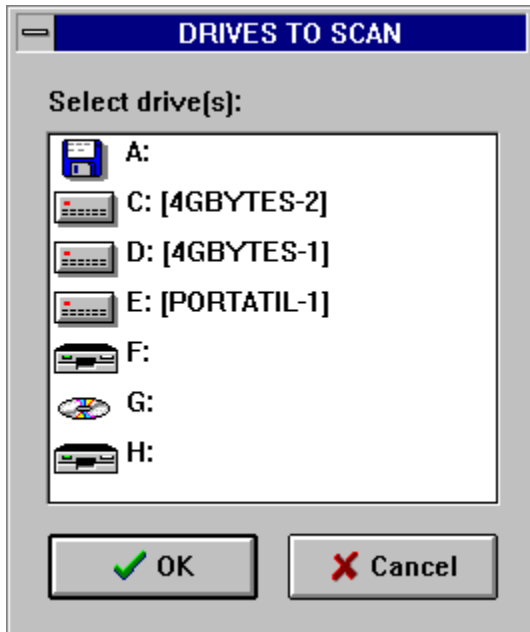


Copyright 1988-97 ANYWARE SOFTWARE CORPORATION

Deleting ANYCHECK.VAL files

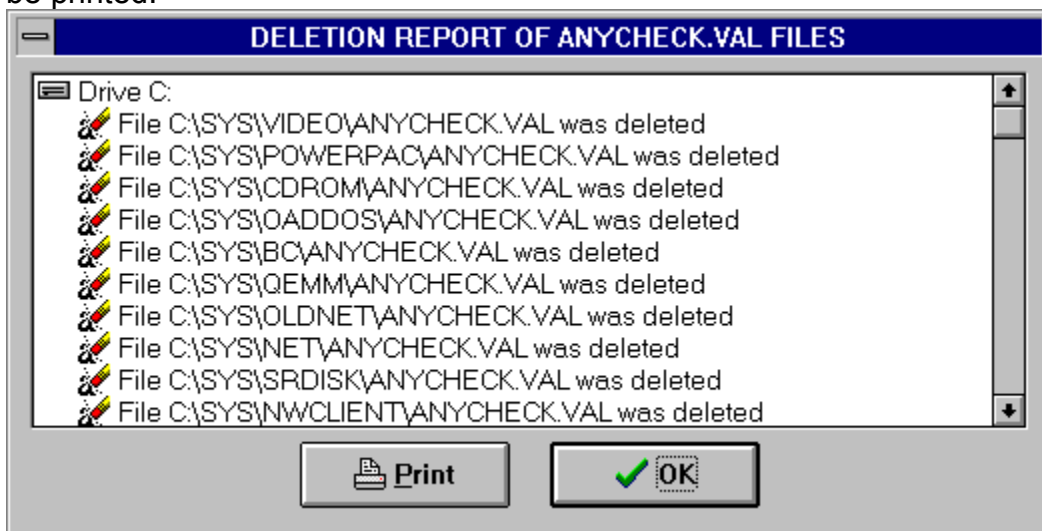


When this button is pressed, you will be asked which drives you want the ANYCHECK.VAL files to be deleted from.



Once the drives have been selected, the deletion of ANYCHECK.VAL files will begin.

When the deletion is complete, a report of the deleted files will appear. This report may be printed.



Destroying files with extension *.VIR



When this button is pressed, you will be asked which drives you want the files with extension *.VIR to be destroyed from.



Once the drives have been selected, the destruction of files with extension *.VIR will begin.

When the destruction is complete, a report of the destroyed files will appear. This report may be printed.



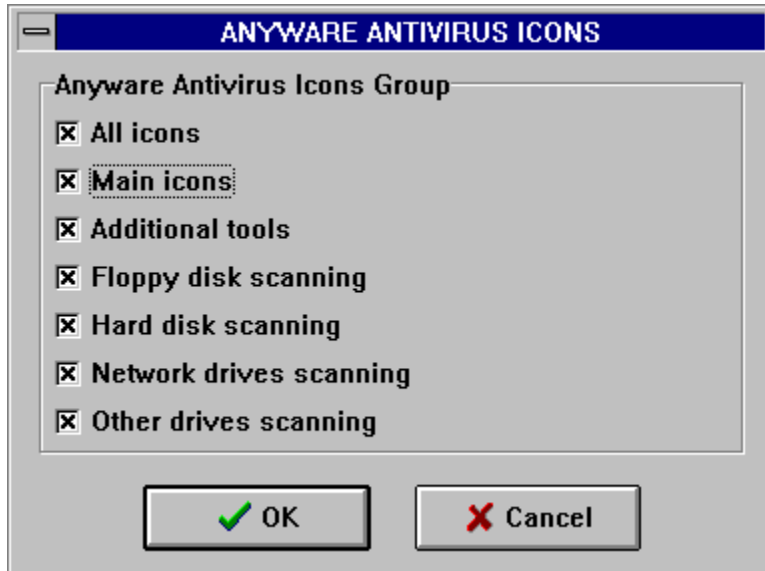
These files are backups of infected files that Anyware Antivirus creates before attempting to clean the infected files.

Anyware Antivirus has four different functions: Scan, Protection, Tools and Information.

How to recreate the Anyware Antivirus Windows group



When this button is pressed, Anyware Antivirus will prompt you to select which icons you want in the Anyware Antivirus Windows group.



If you press the "OK" button, the Anyware Antivirus group will be created, (if this group already exists, all previous icons will be deleted), and the selected icons will be created.



These icons allow you direct access to the most important functions of Anyware Antivirus.

How to scan a floppy disk



When this button is pressed, the scanning of the floppy disk inserted in the drive is started.

The boot sector and the files on the disk are scanned. When the scan is completed, a report of the infected files will appear. This report may be printed.

How to scan the computer



When this button is pressed, the scan of the computer is started.

The scanning will be started using the options defined in the toolbar's two-state buttons. All objects defined in the list of objects to be scanned will be scanned, excluding the objects defined in the list of exceptions.

If the list of objects to be scanned is empty, you must choose which drives you want to scan.



Information

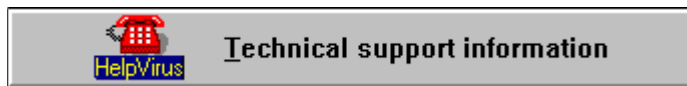
Anyware Antivirus has an information function, which consists of:



a button to retrieve information about awards,



a button to retrieve information about updates needed,



a button to retrieve information about technical support,

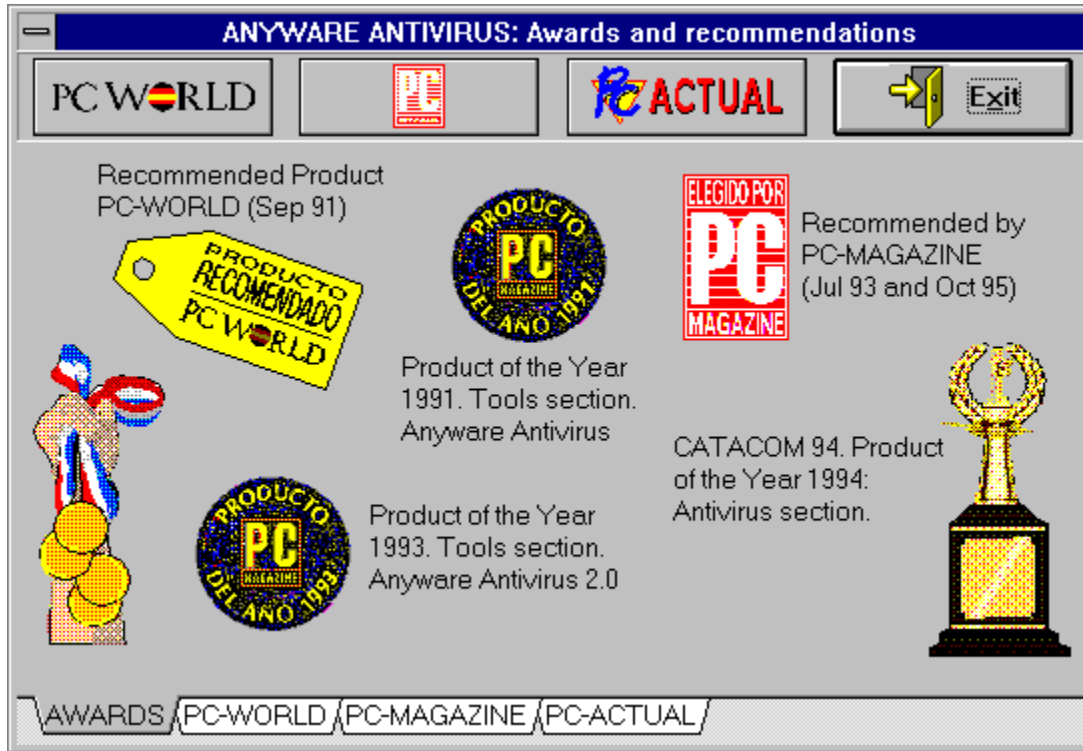


and tabs to select other functions.

Information about awards



When this button is pressed, the information dialog box about awards appears.



Information about technical support



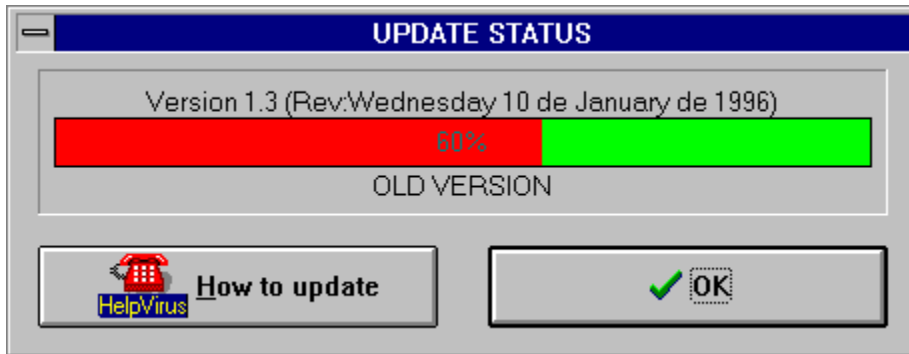
When this button is pressed, a dialog box with information about how to contact Anyware will appear.



Information about updates needed



When this button is pressed, a dialog box will appear to show you the age of your version of Anyware Antivirus.



You need to update your version when the bar is completely red. This depends on the current date and the date when Anyware created the virus information file.

If your version is too old, contact Anyware to obtain a more recent version.



Integration with Windows File Manager



When this option is activated, Anyware Antivirus is added to the Windows File Manager menu and toolbar.

This option allows you to call Anyware Antivirus directly from Windows File Manager.

An object can be a drive, a directory tree, a specific directory or a specific file.

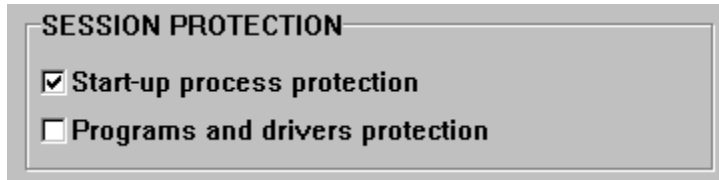
Options for permanent configuration



The permanent configuration is used each time the computer is started.

This configuration consists of protection of start-up process and protection of drivers and programs.

Options for the current session configuration



A screenshot of a Windows system settings window titled "SESSION PROTECTION". The window has a light gray background and a thin border. Inside, there are two checkboxes. The first checkbox is checked and is followed by the text "Start-up process protection". The second checkbox is unchecked and is followed by the text "Programs and drivers protection".

The configuration of the current session is used by the protection system until the computer is restarted.

This configuration consists of protection of start-up process and protection of drivers and programs.

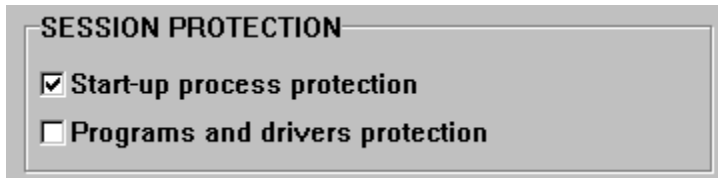
Protection

Anyware Antivirus has a function to configure the protection system.

The protection function consists of:



options for permanent configuration,



options for current session configuration,



functions.

and tabs to select other

Protection of drivers and programs

When this option is activated, the protection system of Anyware Antivirus protects the files with extension *.EXE, *.COM, and *.SYS from being modified, to prevent a computer virus from infecting them.

NOTE: If you activate this option, you cannot rename, delete or change ANY file with extension *.EXE,*.COM and *.SYS. For this reason, if you want to install a new software you cannot do so until you have deactivated this option.

Protection of the start-up process

When this option is activated, the protection system of Anyware Antivirus protects the boot sectors of the hard disk from changes, to prevent a computer virus from modifying the start-up process.

Anyware Antivirus has a protection system comprised of ANYPROTV.SYS and VIGILANT.COM. This system supervises the operations in your computer to automatically detect computer viruses.

Push buttons

When these buttons are pressed, an action will take place.

The push buttons are:



Selecting objects to be scanned



Selecting objects that will be excluded from the scan



Deleting ANYCHECK.VAL files



Destroying files with extension *.VIR

Scan


Anyware Antivirus has an scan function to detect and remove computer viruses.

The scan function consists of:



a toolbar,

 one or two buttons to scan floppy disks,

 a button to scan the computer,

 an exit button,

 and tabs to select other functions.

Scanning DOS system files



When this button is pressed, the files IO.SYS, MSDOS.SYS and COMMAND.COM are scanned to prevent computer viruses.

Scanning Windows system files



When this button is pressed, Windows system files are scanned to prevent computer viruses.

Scanning compressed files



When this button is pressed, the compressed files are internally scanned to detect computer viruses.

Scanning infected files



When this button is pressed, files with extension *.VIR are scanned to detect computer viruses.

Scanning memory



When this button is pressed, RAM memory is scanned to prevent computer viruses.

If a computer virus is detected in memory, it is necessary to start the computer from a clean system floppy disk.

Scanning only / Automatic removal



If this button is not pressed, scanning only mode is selected. Even if Anyware Antivirus finds a virus, the virus will not be removed.



If this button is pressed, automatic removal mode is selected. When a virus is found, Anyware Antivirus will choose the best way to recover the original file before it became infected.

Scanning the start-up process

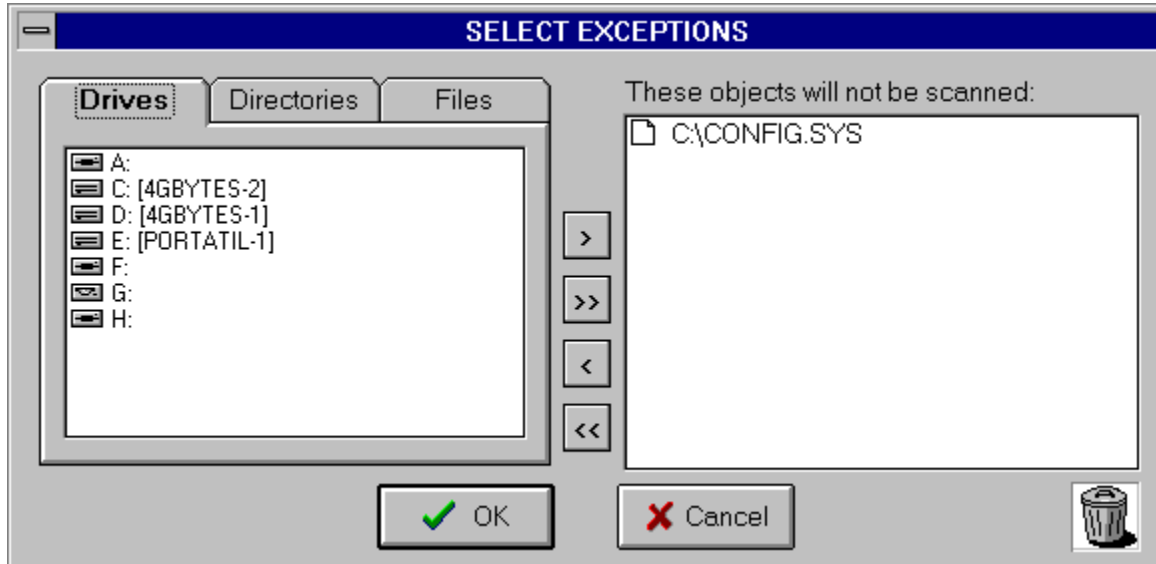


When this button is pressed, boot sectors on disk are scanned to detect computer viruses in the start-up process of computer.

Selecting exceptions to scan



This button allows you to select which objects will not be scanned.



Make a list with the drives, directories and files that you do not want to be scanned.

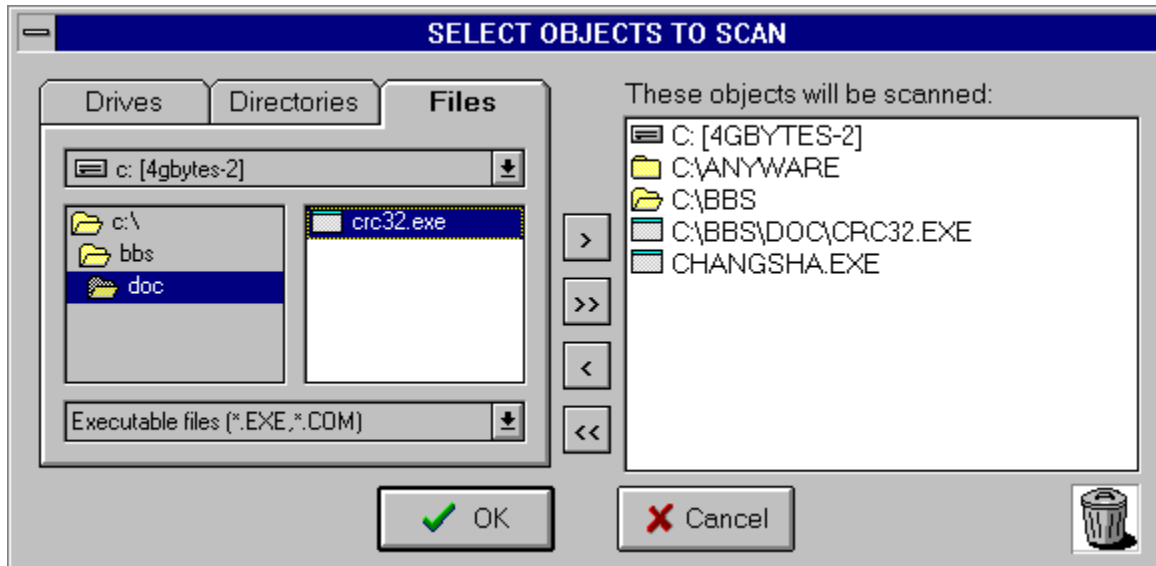


When this button is pressed, the objects included in the list of exceptions will not be scanned.

Selecting objects to be scanned



This button allows you to select which objects will be scanned.



Make a list of objects to be scanned with the drives, directories and files that you want.



When this button is pressed, the selected objects will be scanned.

If the list is empty, Anyware Antivirus will prompt you each time for the drives you want to scan.



Processes that must be completed from the time the computer is turned on until the operating system is ready.

Toolbar



The toolbar allows you to set scanning options. There are two kinds of buttons:

Two-state buttons

Push buttons

Tools

Anyware Antivirus has a set of tools which consists of:



an option of integration with the Windows File Manager,



a button to recreate the Anyware Antivirus Windows group,



a button to delete ANYCHECK.VAL files,



a button to destroy files with extension *.VIR,



functions.

and tabs to select other

Two-state buttons

When a two-state button is pressed, the option is activated. If it is not pressed, the option is not activated.

The two-state buttons are:



Scanning memory



Scanning start-up process



Scanning DOS system files



Scanning Windows system files



Scanning only / Automatic removal



Scanning compressed files



Scanning infected files



Using Anyware SmartScan



Using Anyware FastScan

Using Anyware FastScan



When this button is pressed, Anyware FastScan is used during scan.

Using Anyware SmartScan



When this button is pressed, Anyware SmartScan is used during scan.

