

License Agreement

This is a legal agreement between you the end user and Softech RAD. By using this software you are agreeing to be bound by the terms of this agreement. If you do not agree to the terms of this agreement, promptly return the disk package and the accompanying items (including written documentation) to the place where you obtained them for a full refund.

1. GRANT OF LICENSE.

a. SINGLE-USER EDITION of the SOFTWARE.

Softech RAD grants you the right to use one copy of the enclosed Softech RAD software program (the 'SOFTWARE') on a single terminal connected to a single computer (i.e. with a single CPU). You may not network the SOFTWARE or otherwise use it on more than one computer or computer terminal at the same time.

b. SITE MULTI-USER EDITION of the SOFTWARE.

Softech RAD grants you the right to use an agreed number of copies of the enclosed SOFTWARE in a single site, connected via a network system.

2. COPYRIGHT. The SOFTWARE is owned by Softech RAD and is protected by copyright laws and international treaty provisions. Therefore, you must treat the software like any other copyrighted material (e.g. a book or musical recording) except that you may (a) make a copy of the SOFTWARE solely for backup or archival purposes, or (b) transfer the SOFTWARE to a single hard disk provided you keep the original solely for backup or archival purposes.

You may not copy the written materials accompanying the SOFTWARE.

3. OTHER RESTRICTIONS. You may not rent or lease the SOFTWARE, but you may transfer the SOFTWARE and accompanying written materials on a permanent basis provided you retain no copies and the recipient agrees to the agreement. You may not reverse engineer, decompile or disassemble the SOFTWARE. If the SOFTWARE is an update, any transfer must include the update and all prior versions.

LIMITED WARRANTY.

Softech RAD warrants that the original disks are free from defects for 30 days from the date of delivery of the SOFTWARE.

CUSTOMER REMEDIES. Softech RAD's entire liability and your exclusive remedy shall be, at Softech RAD's option, either (a) return of the price paid or (b) replacement of the SOFTWARE, which does not meet Softech RAD'S Limited Warranty and which is returned to Softech RAD with a copy of your receipt. Any replacement SOFTWARE will be warranted for the remainder of the original warranty period.

NO OTHER WARRANTIES. Softech RAD disclaim all other warranty, either express or implied, including but not limited to implied warranties of merchantability and fitness for a particular purpose, with respect to the SOFTWARE, and the accompanying written materials. This limited warranty gives you the specific legal rights. You may have other which vary from country to country.

NO LIABILITY FOR CONSEQUENTIAL DAMAGE. In no event Softech RAD or it's suppliers be liable for any damages whatsoever (including, without limitation, damages for loss of business profits, business interruption, loss of business information, or other pecuniary loss) arising out of the use of or inability to use the SOFTWARE, even if Softech RAD has been advised of the possibility of such damages. Because some countries do not allow the exclusion or limitation of liability, for consequential or incidental damages, the above limitation may not apply to you.

This agreement is governed by the laws of the United Kingdom.



Welcome to FileTAB

Contents

- [Overview](#)
- [Using FileTAB](#)
- [License Agreement](#)
- [Order Form](#)

© 1997 Softech RAD. All rights reserved. No part of this document may be reproduced, stored in a retrieval system, or transmitted in any form or by any means - electronic, mechanical, photocopying or otherwise without the prior written permission of the publishers, Softech RAD Documentations.

Information in this document is subject to change without notice.

Microsoft Windows and MS-DOS are registered trademarks of Microsoft Corporation. All other product names are trademarks, registered trademarks, or service marks of their respective owners.

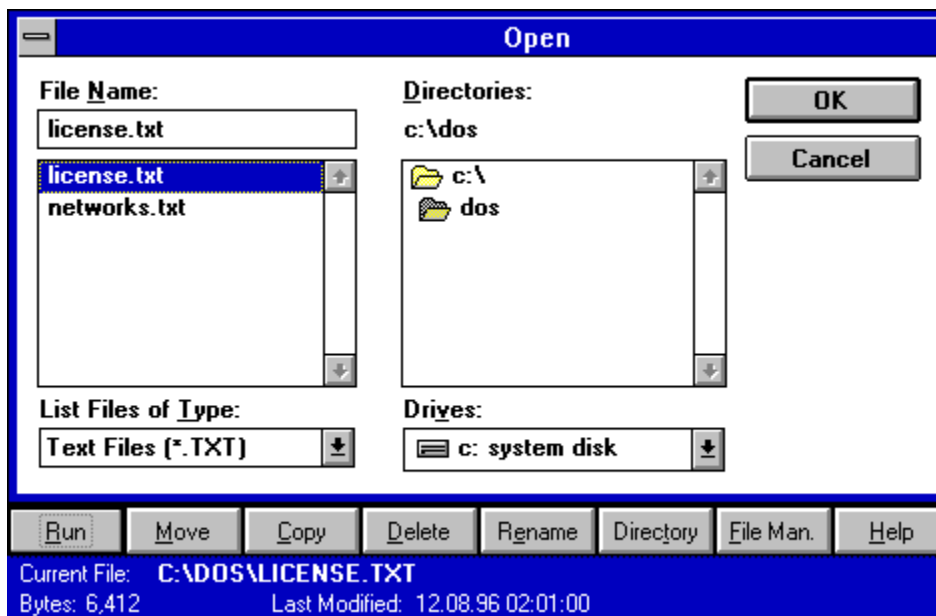
Overview

FileTAB is convenient utility that enhances the Windows File Dialogs. File Dialogs are the windows that pop-up when you request a new file, open up an existing file or save a file to disk.

FileTAB complements these dialogs and enables you to process commonly used File Manager commands. It is a unique utility that works in the background and does not display a persistent window - instead it makes itself visible only when the file dialogs become active.

Try this example:

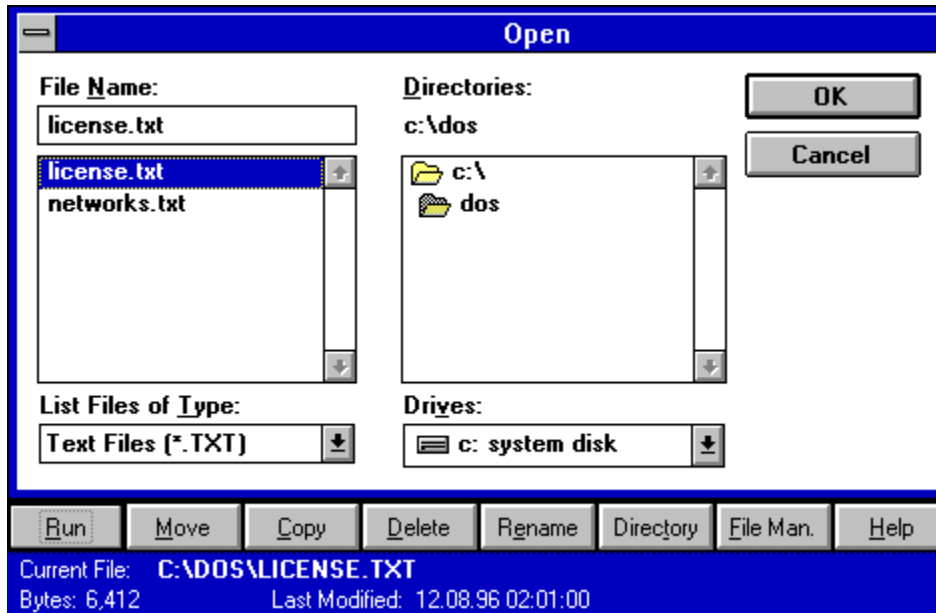
1. Run FileTAB if you have not already done so by clicking on the FileTAB icon in Program Manager.
2. Run Notepad from Program Manager.
3. In Notepad, select the Open command from the File menu. The following window appears below the Open dialog:



Note: the top part of the window is the default dialog that ships with Microsoft Windows and operates in the manner that you are already accustomed to. The bottom portion is the FileTAB utility.

Using FileTAB

FileTAB is designed to be very easy to use. The functions of the various buttons are described below.



Note: to use Run, Move, Copy and Rename commands, you must highlight the filename in the File List box (this list box appears on the left handside of the File dialog).

RUN

This runs the selected file from the file list.

MOVE

This moves the selected file to a destination path. Once this function completes, **you must refresh** the filename listbox contents by clicking on the directory list on the right handside.

COPY

This copies the selected file to a destination path. Once this function completes, **you must refresh** the filename listbox contents by clicking on the directory list on the right handside.

RENAME

This deletes the selected file from the filename listbox. Once this function completes, **you must refresh** the filename listbox contents by clicking on the directory list on the right handside.

DIRECTORY

This creates a new directory:

1. Highlight and double click on the directory where you wish to append the new directory (right hand directory listbox).
2. Enter the new directory name.
3. Once this function completes, **you must refresh** the directory listbox contents by clicking on the directory list box on the right handside.

Below the series of panels is a tab that displays the currently selected filename, the size and the date at

which it was last modified.

FILE MAN.

Click this button to open or activate Window's File Manager.

HELP

This button launches this help file.

Order Form

Register this software by completing the relevant details shown. To view this order form, maximise this help file window.

Ordering by cheque:

To order by cheque send this order form and a cheque made payable to SOFTECH RAD at the address shown:

Softech RAD
P.O. Box 595
Leicester
England. UK.
LE2 3WZ

To print this order form, click on Print Topic in the File pull-down menu.

Payments must be in Pound Sterling drawn on a British bank, or you can send international postal money orders in Pounds Sterling.

Site licenses

A site license for this application entitles an organization to receive one copy of the distribution package and duplicate the distribution disk for the specified number of copies. The minimum number of copies to order under the site license agreement is 3 copies.

Note:

- This application is shipped on 3.5 inch disks only.
- Prices include shipping by postal mail (airmail outside UK).

FileTAB Single Copy _____ copies at 7-50 Pounds Sterling each = _____
FileTAB Site License _____ copies at 6-50 Pounds Sterling each = _____

For your information, Softech RAD has produced other utility software that may interest you. Please contact us for further information.

DeskTAB Single Copy _____ copies at 9-00 Pounds Sterling each = _____
DeskTAB Site License _____ copies at 6-50 Pounds Sterling each = _____

KlickBoard Single Copy _____ copies at 9-00 Pounds Sterling each = _____
KlickBoard Site License _____ copies at 6-50 Pounds Sterling each = _____

MagicMenu Single Copy _____ copies at 9-00 Pounds Sterling each = _____
MagicMenu Site License _____ copies at 6-50 Pounds Sterling each = _____

PickList Single Copy _____ copies at 7-50 Pounds Sterling each = _____
PickList Site License _____ copies at 4-50 Pounds Sterling each = _____

PowerBar Single Copy _____ copies at 9-00 Pounds Sterling each = _____
PowerBar Site License _____ copies at 6-50 Pounds Sterling each = _____

Alternatively, buy the PowerUser Suite 3.1 which includes all the above six programs at a substantial saving:

PowerUser Suite 3.1 Single Copy _____ copies at 27-50 Pounds Sterling each = _____
PowerUser Suite 3.1 Site License _____ copies at 22-50 Pounds Sterling each = _____

Total Payment _____

Name: _____ **Date:** _____

Company: _____

Address: _____

City, State, Zip: _____

Country: _____

Day Phone: _____ **Eve:** _____

Electronic Mail address: _____

How did you hear about this product? _____

Comments:

