

# Welcome to DeskTAB

## Contents

- [Overview](#)
- [Using DeskTAB](#)
- [License Agreement](#)
- [Order Form](#)

© 1997 Softech RAD. All rights reserved. No part of this document may be reproduced, stored in a retrieval system, or transmitted in any form or by any means - electronic, mechanical, photocopying or otherwise without the prior written permission of the publishers, Softech RAD Documentations.

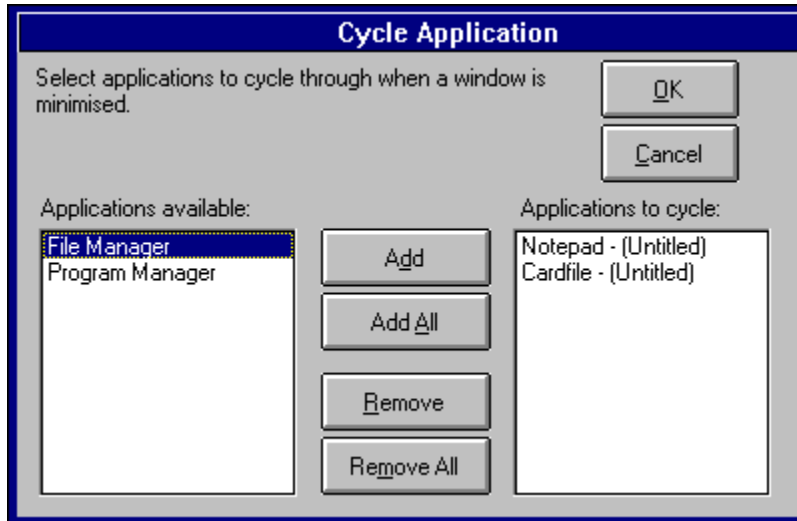
Information in this document is subject to change without notice.

Microsoft Windows and MS-DOS are registered trademarks of Microsoft Corporation. All other product names are trademarks, registered trademarks, or service marks of their respective owners.

# Cycle Application

This sets up a cycle of windows and is essential if you are constantly switching between applications transferring information from one window to another. If this function is activated in the down position, whenever you minimise one window, the other window in the cycle pops up and so on.

The following window appears when you press this button.

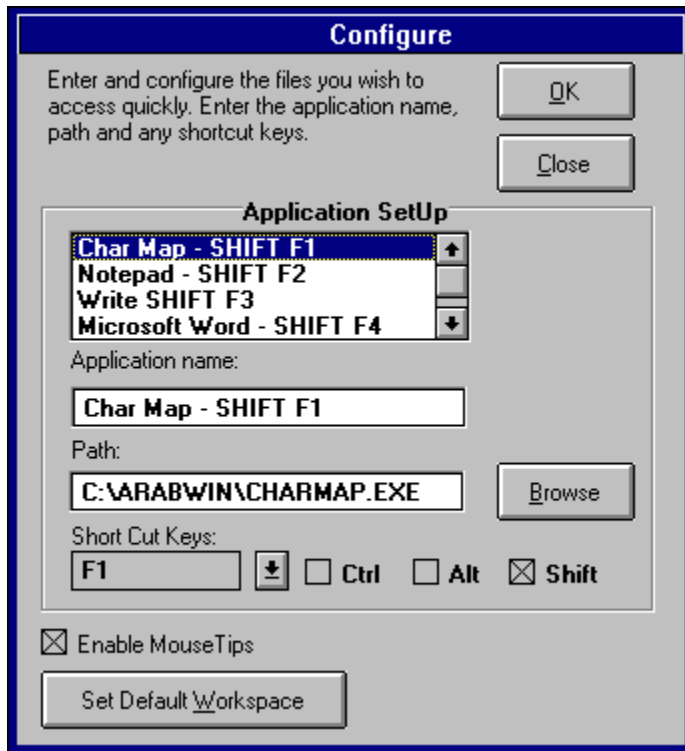


The list on the left handside contains all the available applications. The list on the right shows the applications to cycle through. Highlight the application/s you wish to cycle through and select ADD or double click to transfer to the right handside.

The sequential order of the applications on the right handside determines the order in which the windows cycle. To remove an application from the cycle list, highlight the particular entry on the right hand side list and click remove.

# Configure

This brings up the window shown.



Use the Configure window to assign you frequently used files:


- a. Click on an empty slot in the application setup listbox.
- b. Enter the application name - this is purely for your reminder only - you can enter any descriptive text here. Whatever you enter here will appear in DeskTAB's main window drop down list.
- c. Enter the path of the file.
- d. Enter the shortcut key to use from the drop down list. You can assign CTRL, ALT or SHIFT key combinations too.

In the bottom half of the screen is the options box. Here you can enable or disable mousetips and set the default work space.

# Position Template

This defines, the position on the screen where you normally work. Upon activation, any sizeable window adopts the boundary you specify.

To specify the boundary:

1. Click on configure (the  button on DeskTAB's main window). The Configure window appears.
2. Click on the Set Default Workspace button.
3. When the position template window appears, move the window to the position where you would like the activated window to appear and select O.K.
4. Ensure the Workspace button on DeskTAB's main window is clicked and is in the down position. Any sizeable window you subsequently activate will adopt the position and dimensions you defined.

# Overview

Desktab is a multi-featured desktop utility designed to complement your Windows session. It enhances the way you work and features:

- a full windows Browser enabling you to fast switch to any window in any application.
- a function to make any window topmost.
- the ability to close multiple applications simultaneously.
- maximising, minimising or restoring selected multiple windows simultaneously.
- one click to minimise, maximise or restore *all* running applications.
- functions for arranging icons, cascading or tiling windows.
- the capacity to assign shortcut keys to start your applications.
- the ability to define your own default work space on your desktop.
- the power to your enhance your mouse - any window or object your mouse lies over automatically receives focus.
- the ability to cycle automatically from one application to another.
- the power to launch any file. The directories and files you select are memorised for fast access.
- the capacity to make a list of commonly used applications, which you can quickly execute.
- the power to sense the files you run - and remember them for easy retrieval.
- a memory button which remembers all the applications you have running in the session. These can be recalled at another session with the click of a button.
- a screen saver launcher.

All this is encapsulated in an easy to use, configurable framework designed for serious users.

Close

Click this button once to quit DeskTAB.

## Minimise

This minimises the DeskTAB program into an icon.

## Minimise All

This minimises all the open windows into icons.



Maximise All

All the open windows are maximised in size so they take up the entire screen.

## Restore All

This restores all the windows to their normal size from an iconic or maximised state.

Screen Saver

This launches your default Windows screen saver.

Switch

This button switches between any open window.

Topmost

Select the window/s you wish to make topmost - so that they float above all the windows.

See Multiple Selections.

### Non-Topmost

Select window/s you wish to make non-topmost. This makes windows that float above all other windows normal again.

See [Multiple Selections](#).

Close Applications

Select the windows or applications you wish to close.

See [Multiple Selections](#)

## Minimise Windows

Select windows you wish to minimise- this reduces a window to an icon.

See [Multiple Selection.](#)



## Maximise Windows

Select windows you wish to maximise - this makes the iconic window take the form of a full screen.

See [Multiple Selections](#).

Arrange Icons

Arrange icons on your desktop.


## Cascade Windows

Cascades the windows on your desktop.

Tile Windows

Tile the windows on your desktop.

### Application Quickstart

This is a toggle button which when in the down position, enables the shortcut keys to launch applications you have configured (to configure DeskTAB, click the  button).

## HyperMouse

This activates hypermouse. When in the down position, the mouse becomes aware of the window or icon underneath it. Any object underneath it becomes active and receives focus. An icon becomes maximised or restored to it's former state.

## Workspace

This is a toggle button. When in the down position, this makes any activated sizeable windows adopt the default working position on the desktop.

See [Position Template](#)

## Run

This is used to launch application or files.


If you click with the left mouse button, the launch file dialog box appears.

If you click with the right mouse button, a list appears which displays the previously used directories. You then select the directory you wish the Launch File dialog box to open at. In this way, you need not waste time locating a previously used directory.

Any files or applications you run from here will be automatically logged into DeskTab and you can retrieve them directly from the Documents drop down list.



### Application List

This represents a list of all commonly used files and applications you assign when you configure DeskTAB (to configure DeskTAB, click the  button).

To select a file you can either open up the list box using the small down arrow to the right, or enter the first few characters that distinguish the file in the list. e.g. if **NOTEPAD** is configured you can type

#### **NOTE**

and press ENTER to run notepad.


If you wish to run a file that does not appear on the list, you can simply type it's full path and press enter.


## Documents

DeskTab monitors the application you are using and maintains their list - the most recently used application appears first. In addition, any file you run from within DeskTab, via the button on the left handside of this drop down list box, will be logged so you can retrieve it at a later date.

## Memory

These buttons are used to store and recall current session applications. Upto two sessions can be stored at any one time. Therefore, if you commonly use a number of applications simultaneously, you can store them in memory. The same application can be recalled at a later date with just one click.

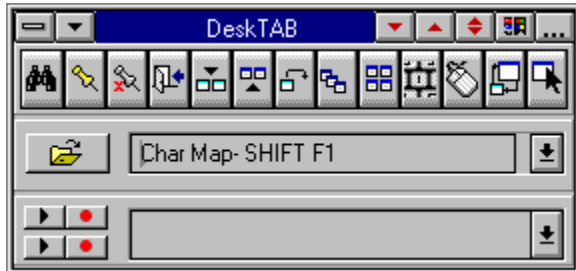
 - This makes DeskTab record the current session.

 - DeskTab plays back the stored session and starts the applications assigned in the record button on the right.

The buttons are in duplicate so you can store two sessions - e.g. you can have a graphics session - where you open up all the applications you need to work with and a wordprocessing session - where you start Microsoft Word, Character Map, Notepad and other utilities.

# Using DeskTAB

DeskTAB is very easy to use. The best way to learn about DeskTAB's functions is to click in the region of interest on the diagram below.



NOTE: DeskTAB is divided into three panels which can be rearranged to suit your needs. This is done by clicking on a panel and dragging it either up or down. The main window can be resized by dragging the bottom window frame.

### Multiple Selections

Some functions in DeskTAB enable you to select multiple windows. e.g. you can close multiple windows at a time. This is achieved by:

- a) Selecting the required window/s by a SINGLE left button mouse click.
- b) On the LAST ITEM you want to select, you DOUBLE CLICK with the left mouse button.

# License Agreement

This is a legal agreement between you the end user and Softech RAD. By using this software you are agreeing to be bound by the terms of this agreement. If you do not agree to the terms of this agreement, promptly return the disk package and the accompanying items (including written documentation) to the place where you obtained them for a full refund.

## 1. GRANT OF LICENSE.

### a. SINGLE-USER EDITION of the SOFTWARE.

Softech RAD grants you the right to use one copy of the enclosed Softech RAD software program (the 'SOFTWARE') on a single terminal connected to a single computer (i.e. with a single CPU). You may not network the SOFTWARE or otherwise use it on more than one computer or computer terminal at the same time.

### b. SITE MULTI-USER EDITION of the SOFTWARE.

Softech RAD grants you the right to use an agreed number of copies of the enclosed SOFTWARE in a single site, connected via a network system.

2. COPYRIGHT. The SOFTWARE is owned by Softech RAD and is protected by copyright laws and international treaty provisions. Therefore, you must treat the software like any other copyrighted material (e.g. a book or musical recording) except that you may (a) make a copy of the SOFTWARE solely for backup or archival purposes, or (b) transfer the SOFTWARE to a single hard disk provided you keep the original solely for backup or archival purposes.

You may not copy the written materials accompanying the SOFTWARE.

3. OTHER RESTRICTIONS. You may not rent or lease the SOFTWARE, but you may transfer the SOFTWARE and accompanying written materials on a permanent basis provided you retain no copies and the recipient agrees to the agreement. You may not reverse engineer, decompile or disassemble the SOFTWARE. If the SOFTWARE is an update, any transfer must include the update and all prior versions.

## LIMITED WARRANTY.

Softech RAD warrants that the original disks are free from defects for 30 days from the date of delivery of the SOFTWARE.

CUSTOMER REMEDIES. Softech RAD's entire liability and your exclusive remedy shall be, at Softech RAD's option, either (a) return of the price paid or (b) replacement of the SOFTWARE, which does not meet Softech RAD'S Limited Warranty and which is returned to Softech RAD with a copy of your receipt. Any replacement SOFTWARE will be warranted for the remainder of the original warranty period.

NO OTHER WARRANTIES. Softech RAD disclaim all other warranty, either express or implied, including but not limited to implied warranties of merchantability and fitness for a particular purpose, with respect to the SOFTWARE, and the accompanying written materials. This limited warranty gives you the specific legal rights. You may have other which vary from country to country.

NO LIABILITY FOR CONSEQUENTIAL DAMAGE. In no event Softech RAD or it's suppliers be liable for any damages whatsoever (including, without limitation, damages for loss of business profits, business interruption, loss of business information, or other pecuniary loss) arising out of the use of or inability to use the SOFTWARE, even if Softech RAD has been advised of the possibility of such damages. Because some countries do not allow the exclusion or limitation of liability, for consequential or incidental damages, the above limitation may not apply to you.

This agreement is governed by the laws of the United Kingdom.

# Order Form

Register this software by completing the relevant details shown. To view this order form, maximise this help file window.

## Ordering by cheque:

To order by cheque send this order form and a cheque made payable to SOFTECH RAD at the address shown:

Softech RAD  
P.O. Box 595  
Leicester  
England. UK.  
LE2 3WZ

To print this order form, click on Print Topic in the File pull-down menu.  
Payments must be in Pound Sterling drawn on a British bank, or you can send international postal money orders in Pounds Sterling.

## Site licenses

A site license for this application entitles an organization to receive one copy of the distribution package and duplicate the distribution disk for the specified number of copies. The minimum number of copies to order under the site license agreement is 3 copies.

Note:

- This application is shipped on 3.5 inch disks only.
- Prices include shipping by postal mail (airmail outside UK).

DeskTAB Single Copy \_\_\_\_\_ copies at 9-00 Pounds Sterling each = \_\_\_\_\_  
DeskTAB Site License \_\_\_\_\_ copies at 6-50 Pounds Sterling each = \_\_\_\_\_

**For your information, Softech RAD has produced other utility software that may interest you. Please contact us for further information.**

FileTAB Single Copy \_\_\_\_\_ copies at 7-50 Pounds Sterling each = \_\_\_\_\_  
FileTAB Site License \_\_\_\_\_ copies at 6-50 Pounds Sterling each = \_\_\_\_\_

KlickBoard Single Copy \_\_\_\_\_ copies at 9-00 Pounds Sterling each = \_\_\_\_\_  
KlickBoard Site License \_\_\_\_\_ copies at 6-50 Pounds Sterling each = \_\_\_\_\_

MagicMenu Single Copy \_\_\_\_\_ copies at 9-00 Pounds Sterling each = \_\_\_\_\_  
MagicMenu Site License \_\_\_\_\_ copies at 6-50 Pounds Sterling each = \_\_\_\_\_

PickList Single Copy \_\_\_\_\_ copies at 7-50 Pounds Sterling each = \_\_\_\_\_  
PickList Site License \_\_\_\_\_ copies at 4-50 Pounds Sterling each = \_\_\_\_\_

PowerBar Single Copy \_\_\_\_\_ copies at 9-00 Pounds Sterling each = \_\_\_\_\_  
PowerBar Site License \_\_\_\_\_ copies at 6-50 Pounds Sterling each = \_\_\_\_\_

**Alternatively, buy the PowerUser Suite 3.1 which includes all the above six programs at a substantial saving:**

PowerUser Suite 3.1 Single Copy \_\_\_\_\_ copies at 27-50 Pounds Sterling each = \_\_\_\_\_  
PowerUser Suite 3.1 Site License \_\_\_\_\_ copies at 22-50 Pounds Sterling each = \_\_\_\_\_

Total Payment \_\_\_\_\_

**Name:** \_\_\_\_\_ **Date:** \_\_\_\_\_

**Company:** \_\_\_\_\_

**Address:** \_\_\_\_\_

**City, State, Zip:** \_\_\_\_\_

**Country:** \_\_\_\_\_

**Day Phone:** \_\_\_\_\_ **Eve:** \_\_\_\_\_

**Electronic Mail address:** \_\_\_\_\_

**How did you hear about this product?** \_\_\_\_\_

**Comments:**





