

# *WinSpool Express*

## **Introduction**

WinSpool Express [WSE] is a simplified version of JCI's full featured Windows spooler. It takes print files and sends them to your printers in a Windows compatible way.

WSE was created specifically for AutoCAD, but is usable by all other programs. WSE provides the basic speed benefits of WinSpool, without the complexity or cost.

[Welcome/Key Features](#)

[Installation and Usage](#)

[Examples](#)

[Feedback](#)

## **Legal Stuff**

[Copyright ©1993, 1994 JCI](#)

[Registration](#)

[License](#)

## **Other JCI Products:**

 [WinSpool](#)

 [JCI Icon Shell](#)

## *Welcome to WinSpool Express*

Thanks for trying WinSpool Express [WSE], the easy print file spooler!  
WSE sends print files to your printers via Print Manager.

- Allows DOS programs to print via Print Manager.
- No configuration required. Super easy to use.
- Speeds printing throughput, especially for CAD and graphics programs, laser and bubble jet printers.
- Works with any program that can print to a file (DOS, Windows, OS/2).
- Automatic file detection and spooling.
- Supports multiple printers, networks, all Windows and OS/2 versions.
- Very affordable.

Give WSE a try. Use it with all your programs.

[Contents](#)

[Special Offer](#)

## *Special Offer*

There are many improvements in WinSpool Express 2.0. And we're working hard to make it the de-facto standard for Windows spooling!

- WSE is now a useful tool for all Windows users, not just AutoCAD.
- WSE is even easier to use: no configuration necessary, automatic operation with intelligence!
- WSE is compatible with everything! All printers, networks, programs and operating environments.

In thanks for your support, JCI is offering the new WinSpool Express 2.0 at the same low price as the old version! But act fast, we can only make this offer to the first fifty registrants.

### **Act Now and Get WinSpool Express 2.0 for Only \$15.00!**

This offer is subject to the following conditions:

- You must register via CompuServe SWREG.  
Not available for mail-in orders.
- Offer available only to the first 50 registrants.  
If SWREG does not display the special price, then 50 people have already registered and the offer is no longer available.

[CompuServe Registration Instructions](#)

## ***CompuServe Online Registration***

The fastest and easiest way to register is via CompuServe's Online Shareware Registration (SWREG).

When you register via SWREG, the registration fee is charged to your CompuServe account and JCI is immediately notified of your registration.

JCI will then send you an authorization code via CompuServe mail. This code will fully enable the program on your computer. In most cases it should only take a few hours to receive your counter code.

### **Instructions**

Follow these instructions to register the program on CompuServe. You will need a valid CompuServe account to do so.

- 1 Log on to CompuServe and go to the Shareware Registration forum [CIS:SWREG].
- 2 Select the option to Register Shareware.
- 3 Select option 1., Registration ID.
- 4 Enter the program's ID number, shown on the About screen.
- 5 If you see the correct program description, confirm it by typing Yes.
- 6 Enter your name and the other information as requested.
- 7 You get one more chance to review, confirm or cancel the registration. Do so. You may now log off CompuServe.

In a few hours or so, you should receive a Registration Notification note in your CompuServe mailbox. This note will include your user name and authorization code.

- 1 Run the program. Click the Register button on the About dialog box.
- 2 Enter your user name and click OK.
- 3 Enter your authorization code and click OK.

You should see a Registration Validated message if the code and user name are correct. The program is now fully enabled on your computer.



Enter your user name exactly as provided by JCI. The authorization code will only work with your user name.

# *Installation*

## **Program Requirements**

- VBRUN300.DLL, the Visual Basic runtime library, needs to be in on your computer in the Windows system directory.
- File Sharing must be enabled on your computer. Load SHARE.EXE, VSHARE.386, or another module which enables file sharing. WSE will warn you if it does not detect proper file sharing features.

## **Program Files**

- You can place the program files anywhere on your computer, but they must remain together. The WSPPOOLEX.EXE is the program executable file.  
The WSPPOOLEX.HLP is the online help file (the file you are now reading).  
The WSPPOOLEX.DRV is a special printer driver used by WSE.
- The program will create a private .INI file in your Windows directory.

### [Updating from a Previous Version](#)

## **Usage**

When you run WSE, it will automatically begin spooling any files it locates in your spool directory. By default, WSE looks for files matching:

```
C:\SPOOL\*.*
```

Just direct your program to print to a file in that directory and WSE will do the rest. WSE will also spool any files you copy into the directory.

Keep WSE running so that it will detect any new print files. Place WSE in your startup group so that it will run whenever you start Windows.

### [Printing from Windows Programs](#)

### [Printing from AutoCAD](#)

### [Changing the Spool Directory](#)

## **Creating a Program Manager Icon**

You can drag and drop .EXE from File Manager to an open window in Program Manager to create a program icon.

## *Updating from a Previous Version*

Nothing could be easier. Just replace the old program files with the new ones. Any settings in your INI file will be honored.

### **Updates**

Small program changes and bug fixes are denoted in the program version numbers by fractional or letter designation. Such updates are free to all registrants of that version. You do not require you to re-register the program.

#### ***Example***

If you update from version 1.0 to 1.0a or 1.1 there is no charge.

### **Upgrades**

Major program upgrades, indicating new features or major program rewrites, are shown as whole number jumps in the version number. Such upgrades require renewal of your registration. As a registered user, you are entitled to substantial discounts on upgrades.

#### ***Example***

If you upgrade from version 1.0 to 2.0 or 2.0b there will be a small fee for the upgrade.

## *Printing from Windows Programs*

Here's how to redirect output from your Windows programs to a file so that WSE can spool them.

- 1 Run Control Panel and choose Printers.
- 2 From the list, select the printer you want to use and choose Connect.
- 3 Select either the FILE: or C:/SPOOL/WSPPOOLEX.PRN port. If you choose FILE:, you will have to enter a complete path and file name each time. If you choose C:/SPOOL/WSPPOOLEX.PRN, then the output will automatically go to a file that WSE will spool.
- 4 Close Control Panel.
- 5 Run WSE if you are not already doing so and keep it running.
- 6 Print from your program. The data will go to a file instead of the printer and WSE will do the rest.

[Adding Port Names](#)

## *Adding Windows Ports*

If the port you wish to use is not shown, you can add ports to Windows by adding entries in the [Ports] section of the WIN.INI file.

### **Example**

```
[ports]
LPT1:=
LPT2:=
LPT3:=
COM1:=9600,n,8,1,p
COM2:=9600,n,8,1,x
COM3:=9600,n,8,1,x
COM4:=9600,n,8,1,x
EPT:=
FILE:=
LPT1.DOS=
LPT2.DOS=
C:/SPOOL/WSPOOLEX.PRN=
```

To add a port, simply add another entry. For example:

```
LPT4:=
```

If you wish to print to a fixed file name, you can add this as a port to this section and then use Control Panel to connect the printer to the new port. Please note the forward slashes ("/") used instead of backslashes ("\").

```
D:/DIR/FILENAME.PRN=
```



## ***Configuring AutoCAD***

To use WSE with any version of AutoCAD, all you need to do is plot to a file in WSE's spool directory. You can specify a plot file name each time or you can use the autospool feature.

### **Autospool**

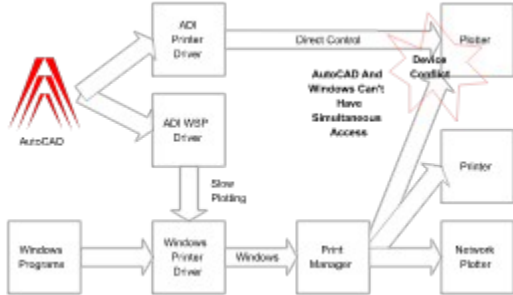
- 1 Follow the directions in the AutoCAD Installation and Performance Guide on configuring autospool.
- 2 Make the default directory for plot files the WSE spool directory.
- 3 Run WSE.

Now when you plot to a file, AutoCAD will place the plot in the spool directory and WSE will do the rest.

[Discussion](#)

# Using WSE with AutoCAD

## How AutoCAD Normally Works

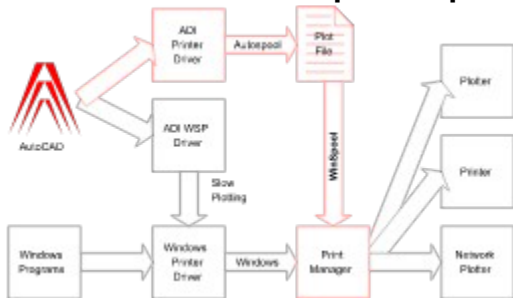


This is how AutoCAD normally works.

AutoCAD has its own printer and plotter drivers which are very efficient and capable of great output, but they just don't cooperate very well with Windows. AutoCAD drivers want to speak directly with the printer or plotter, but Windows doesn't like to surrender control. Plotting to a remote printer (one that is not directly connected to your computer) just further complicates things.

AutoCAD for Windows can use Windows system printers, but the process is very slow, and Windows drivers for some printers (such as HP plotters) are very inefficient.

## AutoCAD with WinSpool Express



This is how WinSpool works.

The fastest way for any version of AutoCAD to produce a plot is for it to plot to a file using its own ADI drivers. This means that AutoCAD does not have to waste time handshaking with the target printer; it can plot just as fast as it is able.

WinSpool then takes the plot file and turns it into a normal Windows print job. Print Manager delivers the job along with all other Windows jobs. Because AutoCAD no longer directly accesses the plotter, there are no more device conflicts.

WinSpool lets AutoCAD and Windows each do what they do best! The benefits are convenience, speed and reliability.

[WSE and Print Manager](#)

## ***WSE and Print Manager***

### **Works in Concert with Print Manager**

To avoid conflicts, and to avoid "reinventing the wheel", WSE works cooperatively with Print Manager.

The output from WSE appears to Windows as just a standard Windows print job. If you have spooling enabled, Print Manager will handle the actual spooling. Print Manager's status window will show WSE print jobs along with any other Windows printing. You can use Print Manager to pause, resume or cancel any WSE output.

If you do not have spooling enabled, WSE will also work. However, we highly recommend you enable Print Manager to take advantage of its background printing and printer sharing abilities.

## *Changing the Spool Directory*

By default WSE looks for files matching:

```
C:\SPOOL\*.*
```

If you want WSE to search for different files, just edit the FileSpec entry in the WSPPOOLEX.INI file.  
For example, change:

```
[Settings]
Version=1.0
FileSpec=C:\SPOOL\*.*
```

to:

```
[Settings]
Version=1.0
FileSpec=F:\PRNFILES\*.PRN
```

or:

```
[Settings]
Version=1.0
FileSpec=D:\SPFILES\V*.AC$
```

## *Examples*

[Print Text or PostScript files Faster Than Ever](#)

[Spool AutoCAD Plot Files via Windows](#)

[Faster Printing for Printers from HP, Cannon and Others](#)

[Solve DOS/Windows Printing Conflicts](#)

[Print Without a Printer](#)

[Print Without a Printer Driver](#)

[WSE and Print Manager](#)

[Associating Data and Printers](#)

[Undoing an Association](#)

[Changing the Spool Directory](#)

[Adding Port Names to Windows](#)

[Print to a File \(Windows\)](#)

## *Printing Text Files*

WSE can print text and PostScript files 5 to 20 times faster than other Windows programs. And it's easy to do!

- 1 Just copy the file you want to print to the spool directory.
- 2 WSE will detect the file and spool it.

Remember that WSE will delete any file it spools, so be sure to save a copy of your original file.

## ***Faster Printing***

Many printers come with their own Windows drivers. These drivers may offer many benefits but some, including those from HP and Cannon, require direct interaction with the printer. The end result is SLOW PRINTING. Here's how to use WSE to speed printing.

- 1 Use Control Panel to Connect the printer to the port named C:/SPOOL/WSPPOOLEX.PRN
- 2 Close Control Panel.
- 3 Print. The data will be directed to a file that WSE will detect and spool. Because printing to file requires no printer interaction, the process is greatly accelerated. WSE will deliver the print data to the printer in the background while you continue to work.

## ***Solve DOS/Windows Conflicts***

Often when DOS applications print under Windows there can be errors due to DOS and Windows both trying to access the same printer. These conflicts can result in error messages, scrambled printouts, or system slowdowns.

If you use WSE to spool the printer output from your DOS programs you can easily prevent and solve such conflicts. In effect, WSE provides DOS programs with both spooling and access to Print Manager.

Some Windows programs use their own printing methods and can create printing or plotting conflicts as do DOS programs. WSE will also solve these problems.



## ***Remote Printing***

If you're on the road and away from a printer, use WSE to print without a printer.

- 1 Just print from your applications to a file.
- 2 Later, when you have access to a printer, run WSE to spool the files to the printer. You could also transfer the files by disk or modem to another computer with the printer. Run WSE on that computer to spool the files.

## ***Printing Without a Printer Driver***

If you have a printer that doesn't have a printer driver, you're in luck. Since WSE uses its own special driver you don't need a driver for your printer.

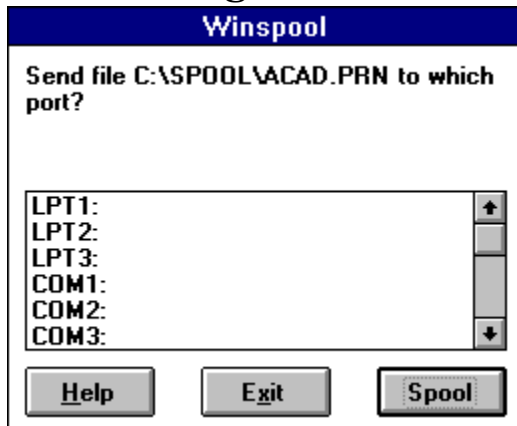
### Print Text

Using WSE, you can print from DOS applications which do have drivers to support your printer and then spool the print data via Windows.

- 1 Use your DOS application with the appropriate driver and print to a file in the spool directory.
- 2 WSE will detect the file and do the rest.

### Printing to a File

## *Associating Data and Printers*



When WinSpool Express finds a print file to spool it inspects the file contents to determine where to send the file. WSE does this by reading the first few bytes of the file and comparing them against a set of "data keys". When the keys match, WSE automatically knows where to send the file.

If WSE can't identify the file, it asks for your guidance. You will see a dialog box showing the file name and a list of available printer ports. Just choose a port and click on the Spool button. WSE will send the file and record the key.

If you send a similar file in the future, WSE will match the data key, and therefore not ask for guidance.

### [Undoing an Association](#)

## *Undoing an Association*

Should you make a mistake, or reconfigure Windows printers, WSE may try to send data to the wrong port. You can edit the WSPPOOLEX.INI file to make WSE "forget" its data keys. Just delete the line in the Keys section with the offending port.

### **Example**

If WSE is sending data to LPT2: when it should not, and your WSPPOOLEX.INI file reads:

```
[Settings]
Version=1.0
FileSpec=C:\SPOOL\*.*
```

```
[Keys]
102920101012=LPT1:
005030203033=LPT2:
```

Delete the second entry in the Keys section with the LPT2: value to make WSE forget the association.

## ***We Want To Hear From You***

JCI is a customer-driven company. We realize that JCI won't succeed as a company if we don't satisfy the needs of our customers. So we've put our customers first.

Our greatest resource is YOU. You provide us with the information necessary for making our products successful. You tell us what we're doing right, what we're doing wrong, and what your needs are. You tell us what you want, and we'll do our best to provide it.

It's a simple plan for success, and it's working well for JCI. Many of the features in our products are a direct result of listening to our customers. The genius of our products comes from our customers, not our programmers.

But for this plan to work we need to hear from you. Any feedback you can give us on JCI products is very appreciated. Even if you hate the program, we want to know! How else will we know what you want?

So let us here from you! Drop us an [email](#) note or send us a letter. We've even prepared some forms for you to print and send.

[Suggestion Form](#)

[Bug Report Form](#)

[Customer Feedback Survey](#)

[Address Label](#)

# Suggestion Form

[Print Form](#)

## User Information

User Name \_\_\_\_\_  
Company \_\_\_\_\_  
Address \_\_\_\_\_  
\_\_\_\_\_  
\_\_\_\_\_  
CompuServe ID \_\_\_\_\_ (any email address)  
JCI Product Name \_\_\_\_\_ Version \_\_\_\_\_

## Suggestion

Please be specific about any enhancements or new features you would like to see in our product. If appropriate, include an example of how you might use this new feature.

\_\_\_\_\_  
\_\_\_\_\_  
\_\_\_\_\_  
\_\_\_\_\_  
\_\_\_\_\_  
\_\_\_\_\_  
\_\_\_\_\_  
\_\_\_\_\_  
\_\_\_\_\_  
\_\_\_\_\_

Many thanks for your suggestion! JCI values you input and we will consider your suggestion in our future product development.

# Bug Report Form

[Print Form](#)

## User Information

User Name \_\_\_\_\_  
Company \_\_\_\_\_  
Address \_\_\_\_\_  
\_\_\_\_\_  
\_\_\_\_\_  
CompuServe ID \_\_\_\_\_, \_\_\_\_\_ (any email address)  
JCI Product Name \_\_\_\_\_ Version \_\_\_\_\_

## System Information

Computer Brand Name \_\_\_\_\_  
Model Number \_\_\_\_\_  
RAM \_\_\_\_\_ MB      HD \_\_\_\_\_ MB  
Special/Unusual Hardware \_\_\_\_\_  
\_\_\_\_\_  
Operating System \_\_\_\_\_, ver. \_\_\_\_\_  
Network System \_\_\_\_\_ (if applicable)  
DOS Version \_\_\_\_\_ (if applicable)

## Description of Problem

Describe your problem completely. Please be specific about the steps which cause the problem, and the exact results you are experiencing. Please include (print out or copy onto disk) your configuration files (application .INI file, plus WIN.INI, SYSTEM.INI, CONFIG.SYS, AUTOEXEC.BAT) and any other file which might be related to the problem. We want to be able to reproduce your problem on our test systems, so the more detailed and accurate your information, the better. Remember: what may seem obvious to you may not be obvious to us.

\_\_\_\_\_  
\_\_\_\_\_  
\_\_\_\_\_  
\_\_\_\_\_  
\_\_\_\_\_  
\_\_\_\_\_  
\_\_\_\_\_  
\_\_\_\_\_  
\_\_\_\_\_  
\_\_\_\_\_

Many thanks for reporting this problem! JCI will use this information to determine and fix the error. We will notify you any fixes we make or any workarounds.

# JCI Customer Survey

[Print Form](#)

## User Information

User Name \_\_\_\_\_  
Company \_\_\_\_\_  
Address \_\_\_\_\_  
\_\_\_\_\_  
CompuServe ID \_\_\_\_\_, \_\_\_\_\_ (any email address)  
JCI Product Name \_\_\_\_\_ Version \_\_\_\_\_

## Survey

- 1 Where did you find out about this JCI program?  
\_\_\_\_\_
- 2 With what operating system are you using the program?  
\_\_\_\_\_ version \_\_\_\_\_
- 3 Which 3 applications do you use most?
  1. \_\_\_\_\_ version \_\_\_\_\_
  2. \_\_\_\_\_ version \_\_\_\_\_
  3. \_\_\_\_\_ version \_\_\_\_\_
- 4 What feature do you find most useful in your work?  
\_\_\_\_\_  
\_\_\_\_\_
- 5 What new features would you most like to see added to the program?  
\_\_\_\_\_  
\_\_\_\_\_  
\_\_\_\_\_
- 6 Was the program easy to install, configure, evaluate, and register?  
\_\_\_\_\_  
\_\_\_\_\_
- 7 Describe any problems you may have had with the program.  
\_\_\_\_\_  
\_\_\_\_\_  
\_\_\_\_\_
- 8 Have you registered the program? What most influenced you to (not) do so?  
\_\_\_\_\_  
\_\_\_\_\_
- 9 Would you recommend the program to others? If not, please explain.  
\_\_\_\_\_  
\_\_\_\_\_  
\_\_\_\_\_
- 10 JCI maintains a beta test group, which gets to try new JCI products before other users and which guides us in developing new products. Would you be interested in participating in JCI's beta-testing group?  
\_\_\_\_\_
- 11 Please rate yourself in terms of computer expertise.  
Beginner 1 2 3 4 5 6 7 8 9 Expert



12 Please make any additional comments which you think might be useful to JCI.

---

---

---

---

Many thanks for your feedback! JCI values your input and we will consider it when developing products in the future.

[Print Label](#)

JCI

6 Harbor Way 132

Santa Barbara, CA 93109

USA

## ***Copyright ©1994 JCI***

This program is Copyright ©1994 by JCI. All rights reserved.

No modifications may be made to this program in any way without the express written consent of JCI.



JCI  
6 Harbor Way 132  
Santa Barbara, CA 93109  
USA

CIS 72607,527

[License / Distribution](#)

# *License and Warranty*

## **License Agreement**

You should read the following terms and conditions carefully before using this software. By using this software you indicate your acceptance of these terms and conditions.

## **Shareware**

This is not free software. This software is protected by copyright law and international treaties. Unauthorized duplication, modification, or distribution of this software in any part, may result in severe civil and criminal penalties.

This license allows you to use this software for evaluation purposes without charge for a period of no more than 30 days. If you use this software after the 30 day evaluation period you are required to register it. If you use this software after the 30 day evaluation period without registering it, you are in violation of this license agreement and copyright law.

## **Unregistered Version**

You are hereby licensed to do any of the following without charge::

- use the unregistered version of the software for a 30 day evaluation period. The program itself may limit the evaluation period to a shorter time.
- make as many copies of the unregistered version of this software and documentation as you wish
- give exact copies of the original unregistered version to anyone
- distribute the unregistered version of the software and documentation in its unmodified form via electronic means

You are specifically prohibited from:

- charging, or requesting donations, for any such copies, however made, except as provided below
- distributing the software and/or documentation with other products (commercial or otherwise) without prior written permission

## **Registered Version**

Once registered, a single copy of the registered software may either be:

- used by a single person who uses the software personally on one or more computers, or
- installed on a single workstation used non-simultaneously by multiple people

You may access the registered version of this software through a network, provided that no more than one user accesses the software per license obtained.

You may move the registered version of the software from one computer to another, provided:

- you delete the registered version from the original computer
- only one registered copy exists per license obtained

## **Shareware Distributors**

Shareware distributors are hereby granted permission to distribute this software, provided:

- no more than US\$5.00 total is charged for any disk, including duplication, handling, shipping, or any other associated service

- distributors must notify the author, in writing, that they are distributing the software
- distributors are requested to send to the author any publication, in which this software is mentioned or advertized
- distributors agree to update and modify any such publication upon request by the author
- distributors agree to distribute only the most current version of the software

The author reserves all copyright and distribution rights to this software and may, at the author's sole discretion, revoke permission to distribute or specifically prohibit distribution of this software by any party.

Shareware distributors should contact the author for a complete master distribution disk. BBS versions do not have an installation program or commonly available support files such as VBRUN300.DLL, so that file sizes can be kept small. The master distribution disks have these features which make installation much easier, especially for beginners.

### **Disclaimer of Warranty**

THIS SOFTWARE AND THE ACCOMPANYING FILES ARE SOLD "AS IS" AND WITHOUT WARRANTIES AS TO PERFORMANCE OF MERCHANTABILITY OR ANY OTHER WARRANTIES WHETHER EXPRESSED OR IMPLIED.

Because of the various hardware and software environments into which the software may be put, NO WARRANTY OF FITNESS FOR A PARTICULAR PURPOSE IS OFFERED.

Good data processing procedure dictates that any program be thoroughly tested with non-critical data before relying on it. The user must assume the entire risk of using the program. ANY LIABILITY OF THE SELLER WILL BE LIMITED EXCLUSIVELY TO PRODUCT REPLACEMENT OR REFUND OF PURCHASE PRICE.

# ***Registration***


## ***Evaluation Period***


You may use the unregistered program for no more than 30 days to determine if the program is appropriate for your needs. After this evaluation period you must register the program if you continue to use it in any way.

## ***Registration Benefits***

- Unlimited program usage. No introduction screen on startup. No nagging messages to make you feel guilty.
- One year of free customer support via CompuServe [email](#) or [US Mail](#).
- Discounts on future upgrades.
- Notification of updates and other JCI product releases.

## ***JCI Satisfaction Guarantee***

 [Money Back Satisfaction Guarantee](#)

 [Excellent Customer Support](#)

[CompuServe Online Registration](#)

[Registration by Mail](#)

[Distribution](#)

We welcome your suggestions, comments or bug reports. They enable us to continue development of this program, make it even more useful, and eliminate any problems.

[Feedback](#)

If you are not satisfied with this product in any way within 30 days after registering, JCI will refund your registration fees in full. We do request that you tell us why you are not satisfied, so that we can continue improving our products.

At JCI we pride ourselves on the excellent support provided to our registrants. JCI is committed to responding promptly, finding solutions, and treating you with the courtesy and respect you deserve.

- Contact JCI via [email](#) or by [US Mail](#).
- In order to keep our overhead costs low, our prices reasonable, and our programmers programming, JCI does not offer telephone support at this time. Please use email. You will discover that JCI can respond quickly and completely to your inquiries.

Our customers are JCI's greatest asset. Not only do they pay the bills, they provide valuable input and guidance in designing and improving our products. You are our source of success. We pledge to earn your loyalty as a customer.

[Feedback](#)



## ***Registration by Mail***

JCI has made an effort to keep the costs of this program low and the response times short. For quickest response, pay your registration fees with cash or money order. This allows JCI to send your materials immediately, avoiding any delays caused by waiting for your check to clear.

Just print the registration form, fill it out, and send it in with your registration fee.

For purchase orders, there is a minimum order of five registrations per order if you do not include payment.

[Registration Form](#)

[Register faster, easier via CompuServe](#)

# JCI Registration Form

[Print Form](#)

User Name \_\_\_\_\_  
Company \_\_\_\_\_  
Address \_\_\_\_\_

CompuServe ID \_\_\_\_\_ (any email address)

JCI Product Name \_\_\_\_\_ Version \_\_\_\_\_

Registration Fee \_\_\_\_\_ US\$

Number of Copies \_\_\_\_\_

Total Fees \_\_\_\_\_ US\$

- 1 Print this form.
- 2 Fill in the form
- 3 Send the form and your registration fee to:  
JCI  
6 Harbor Way 132  
Santa Barbara, CA 93109

As soon as we receive your registration and payment, JCI will send you an authorization code. If you include a CompuServe ID or email address, JCI will send you the countercode electronically, which is faster.

- 1 Run Icon Shell. Click the Register button on the About dialog box.
- 2 Enter your user name and click OK.
- 3 Enter your authorization code and click OK.

You should see a Registration Validated message if the code and user name are correct. The program is now fully enabled on your computer.



Enter your user name exactly as provided by JCI. The authorization code will only work with your user name.

[Instant Registration on CompuServe](#)

WinSpool sends printer data files directly to any Windows printer. It is a smart application which automatically detects and spools print files to the appropriate device. WinSpool has many features not offered in WinSpool Express.

- Solves DOS/Windows printing conflicts
- Delivers your .PRN files to printers after you have printed to the FILE:.
- Allows DOS applications to access network printers.
- Lets you use printers which do not have Windows device drivers.
- Dramatically speeds up printing/plotting speeds.
- Multiple copies.
- Delete or Save files after spooling.
- 3 ways to associate print files with printers, 2 way targeting.
- Supports multiple users, programs, printers, networks.

You can find WinSpool on CompuServe as WINSPO.ZIP in the General Win Utils library of the WINSHARE forum.

JCI Icon Shell is a hot new program launcher.

All your favorite programs appear on a strip at the top of your screen and you can instantly launch or switch between programs with just one click.

- Fit ability makes your active program fill the entire work area.
- Smart task switching prevents accidentally starting a second session of a program that is already running.
- Works in concert with, or entirely replaces Program Manager. Automatically installs or uninstalls itself as the Windows shell at your command.
- Full drag & drop support.
- Easy to configure and use.
- Built in clock.

Try Icon Shell, you'll never go back to your present shell program!

You can find Icon Shell on CompuServe as ICONSH.ZIP in the Program Managers library of the WINSHARE forum.

[Click here for program information.](#)

[Click here to cancel the operation and quit the program.](#)

[Click here to get more help.](#)  
This is the same as pressing F1.

This is a list of the Windows printer ports installed on your system. Choose one of these printers and click Spool to create a new association between the print data shown and the target port. In the future WSE will send any print file with the same data to the port you have chosen.

### [Adding Ports](#)



Click [here](#) to confirm begin spooling the file to the port you have selected. WSE will remember the data type of the file you are sending and send all similar files to the same port in the future.

**email**

JCI email addresses    CompuServe 72607,527  
Mail 400 MHS!CSMAIL!72607,527

internet 72607,527@compuserve.com    AT&T

**US Mail**

JCI, 6 Harbor Way 132, Santa Barbara, CA 93109 USA



