
Not the tiles, but the joints: A little bridge between M.C. Escher and Leonardo da Vinci

Illustrations and further work

Rinus Roelofs

M.C. Escher Centennial Congress - Rome - 1998

- ▷ Rinus Roelofs
- ▷ Tiling-lattices
- ▷ Constructions with tiling-lattices
- ▷ More layers, different layers
- ▷ Transformation of M.C. Escher's regular drawings; animation of transformation
- ▷ Bar grids, Leonardo da Vinci
- ▷ Bar grids, polyhedra
- ▷ Structures and sculptures

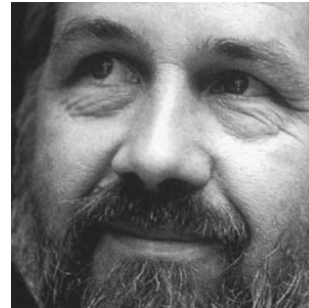


Lansinkweg 28, 7553AL Hengelo, the Netherlands

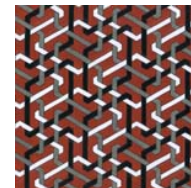
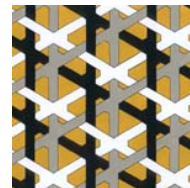
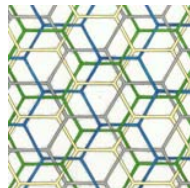
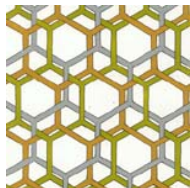
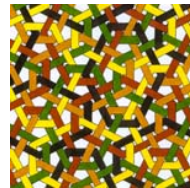
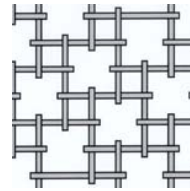
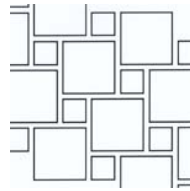
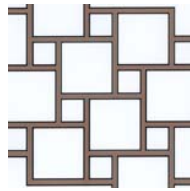
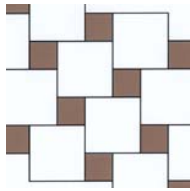
+31(0)74 2507907

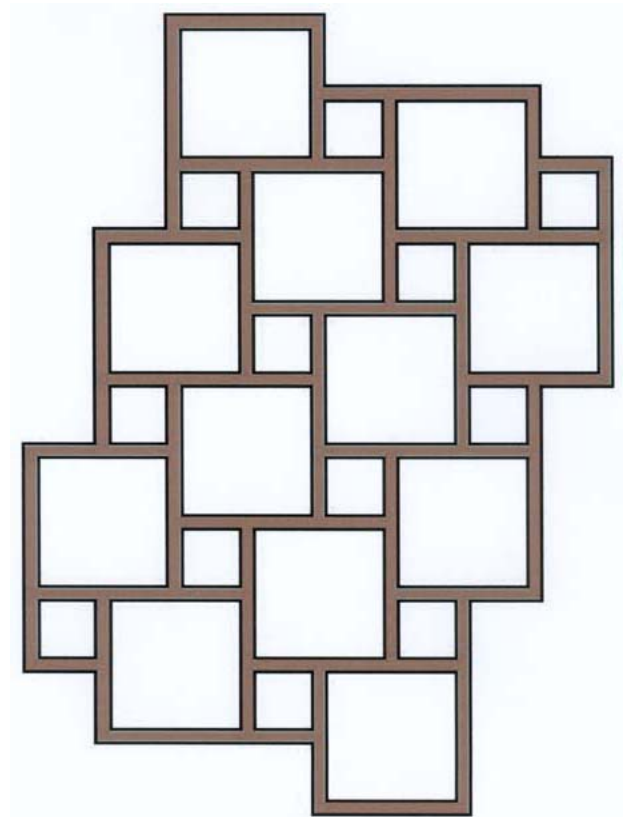
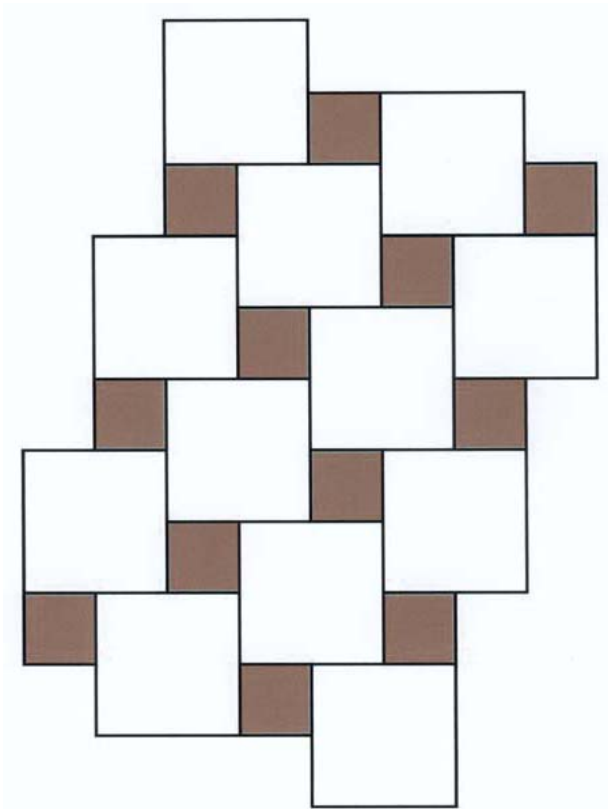
www.rinusroelofs.nl

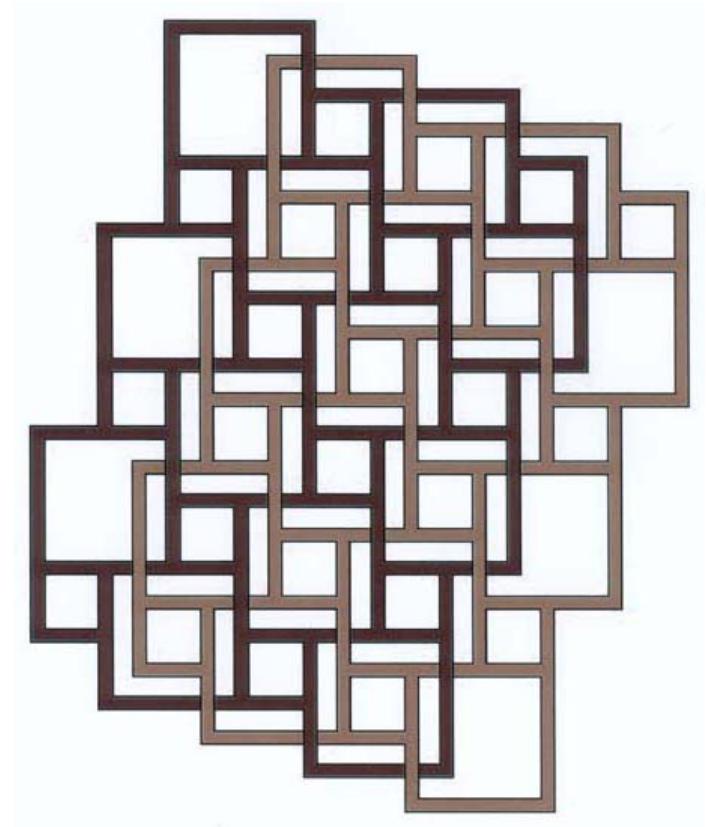
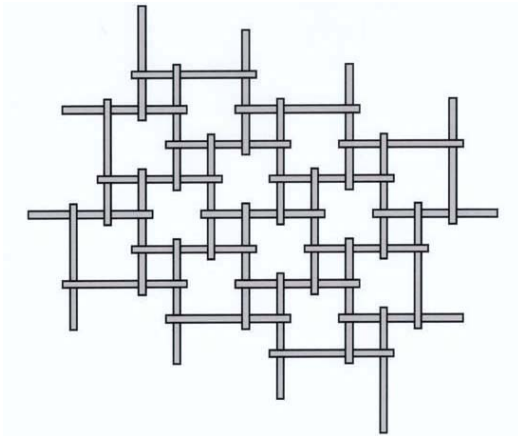
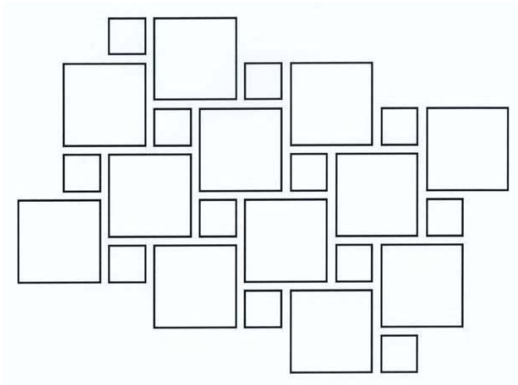
Rinus Roelofs was born in 1954. After studying Applied Mathematics at the Technical University of Enschede, he took a degree from the Enschede Art Academy with a specialisation in sculpture.

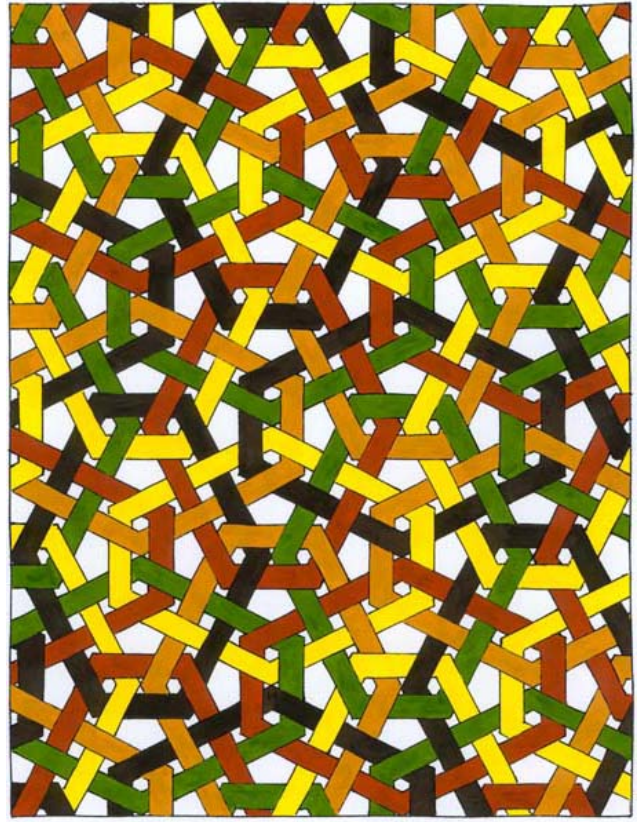
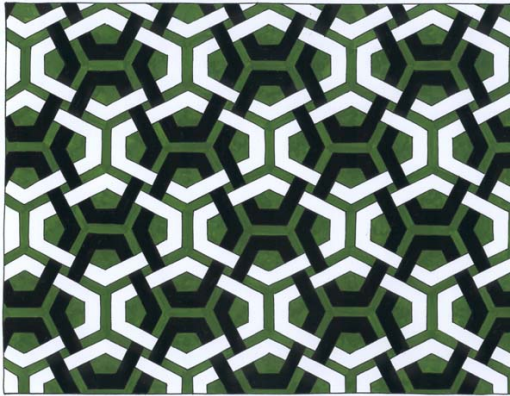
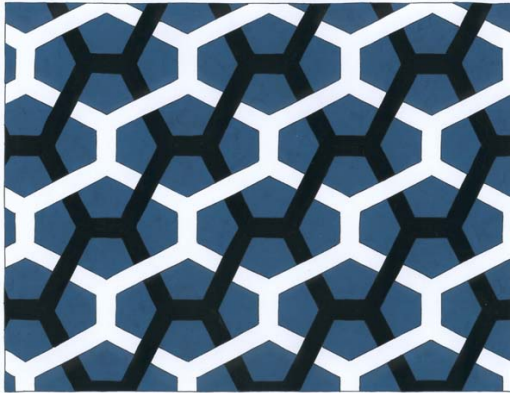


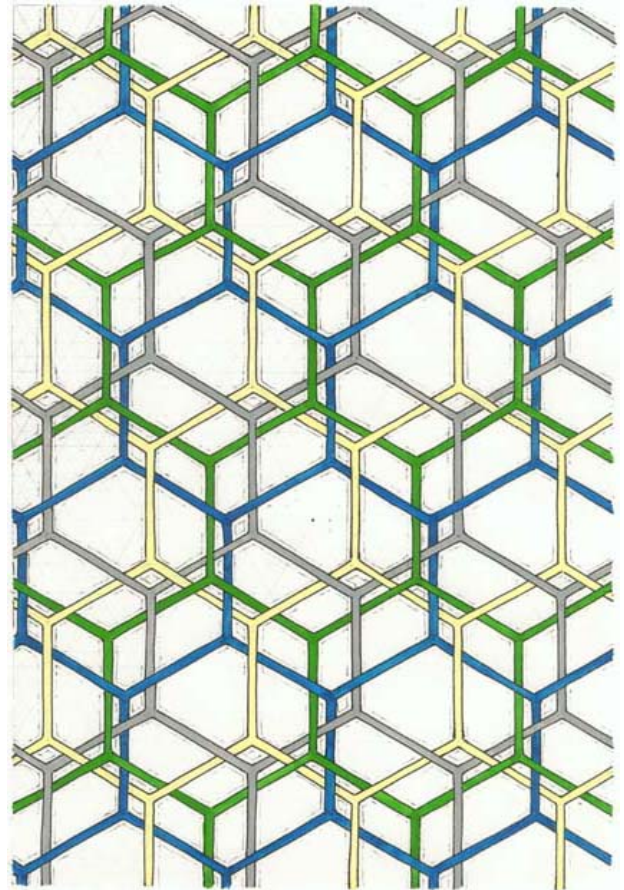
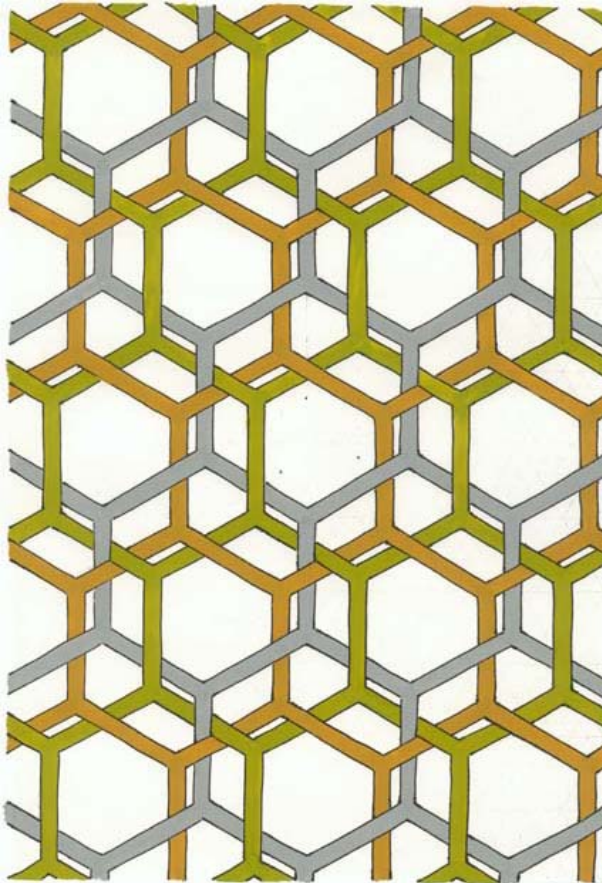
Tiling-lattices - Index

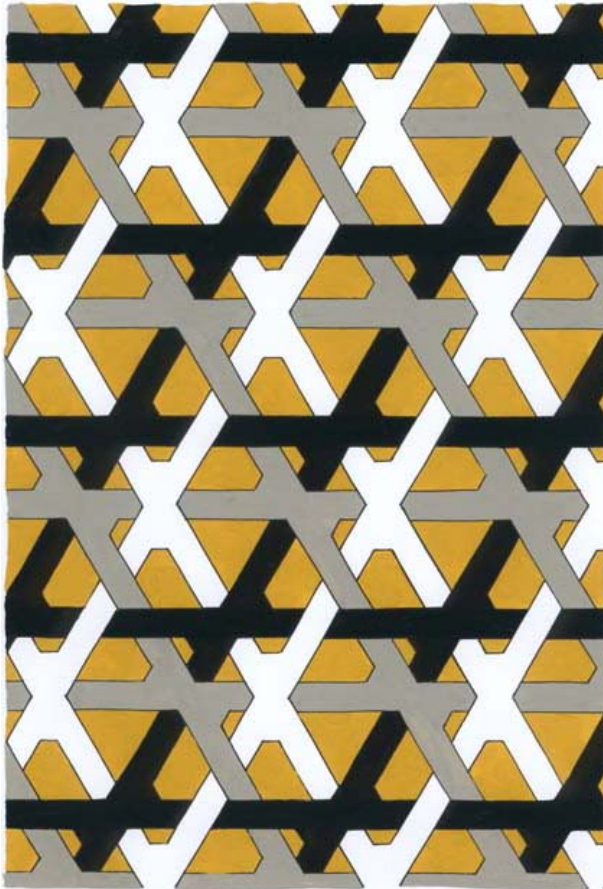




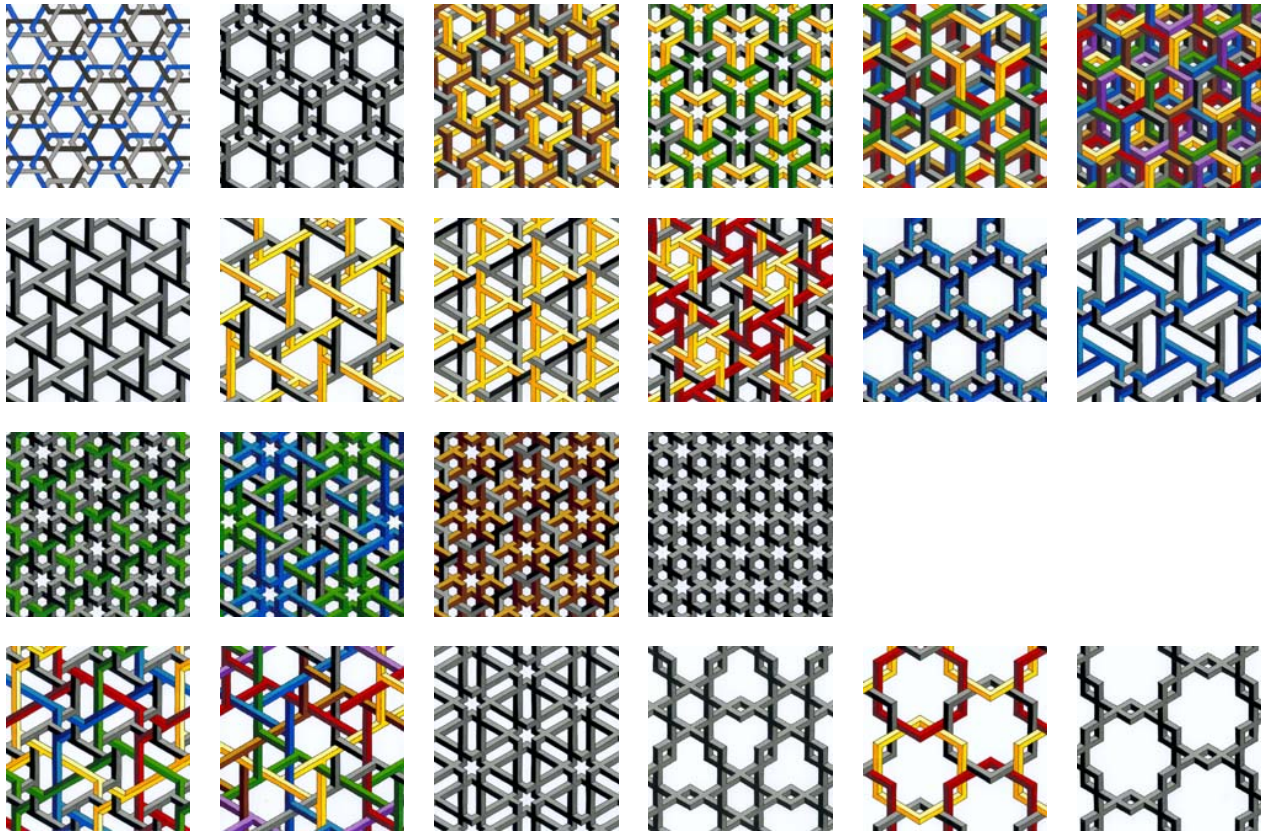




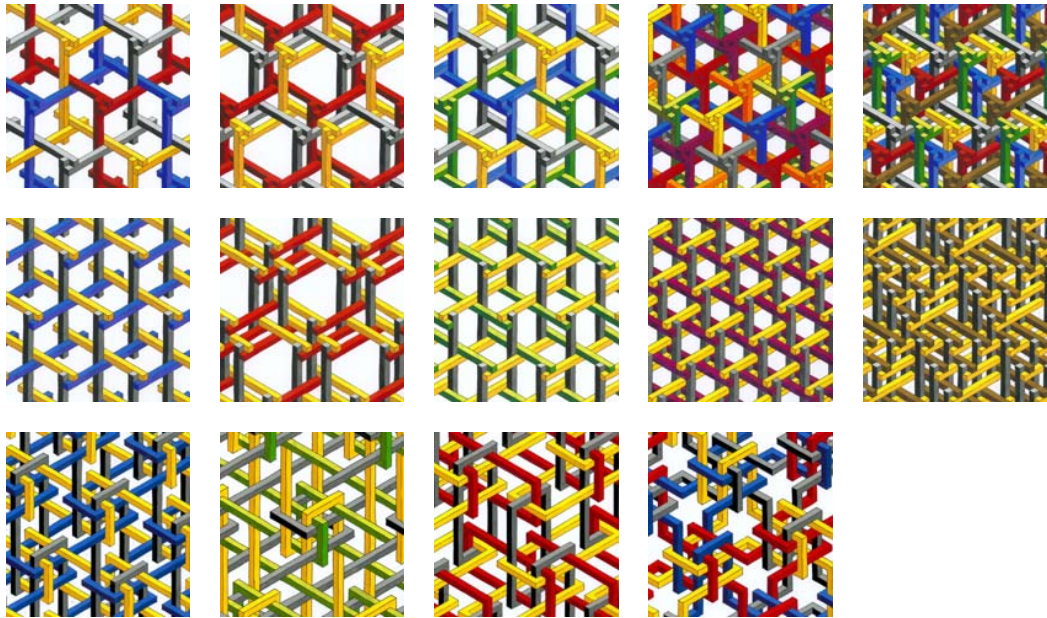


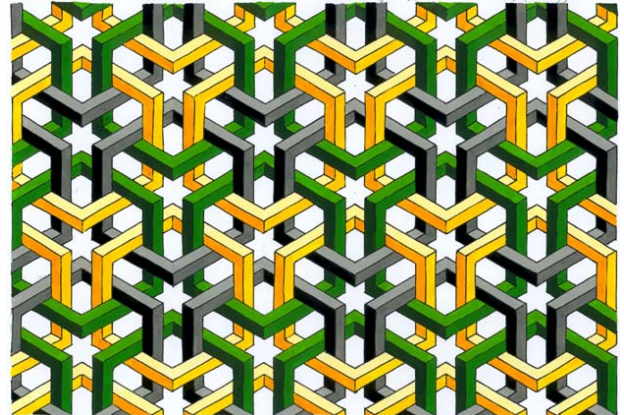
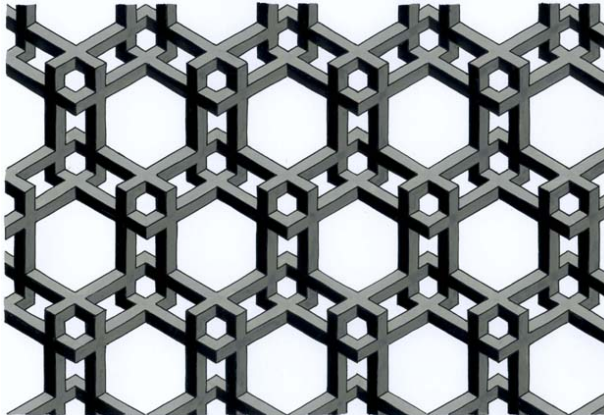
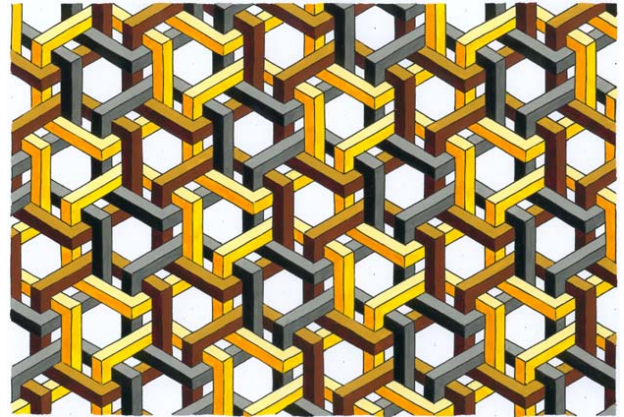
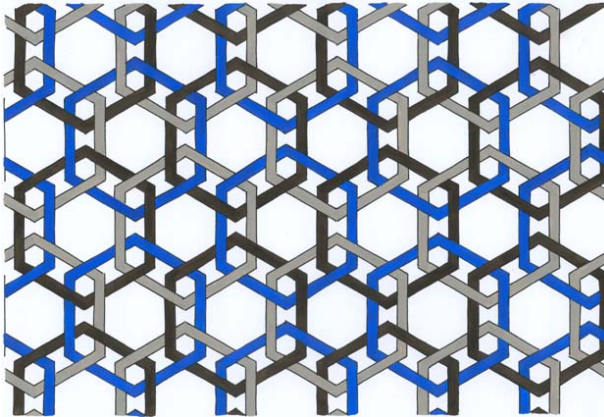


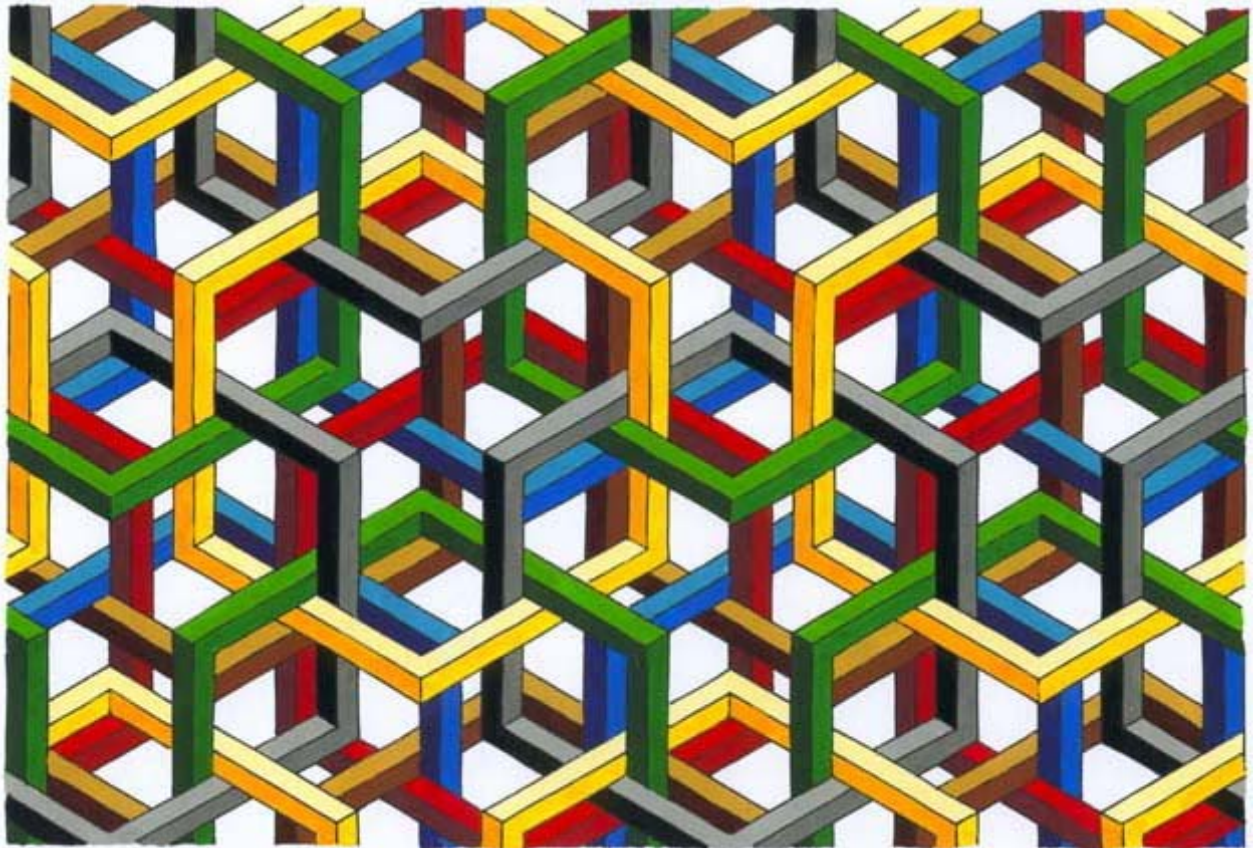
Constructions with tiling-lattices - Index 1



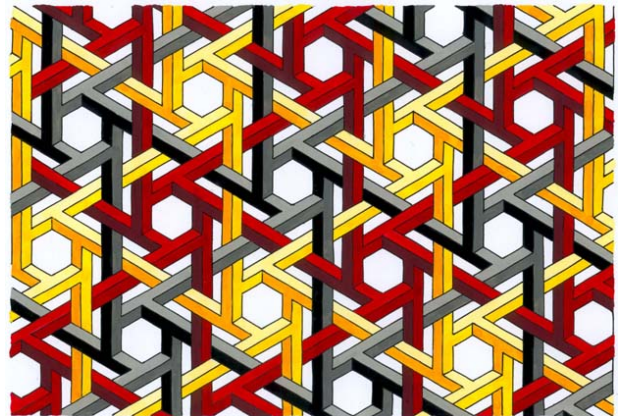
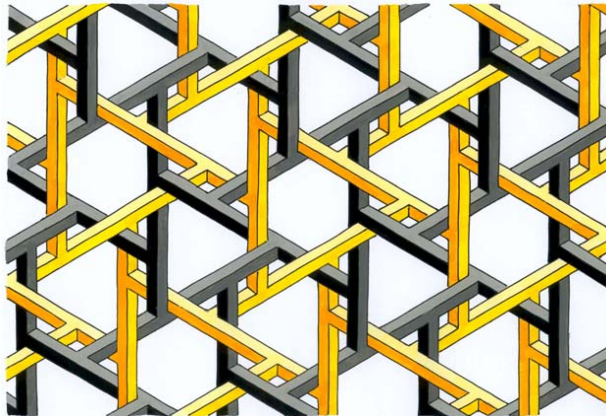
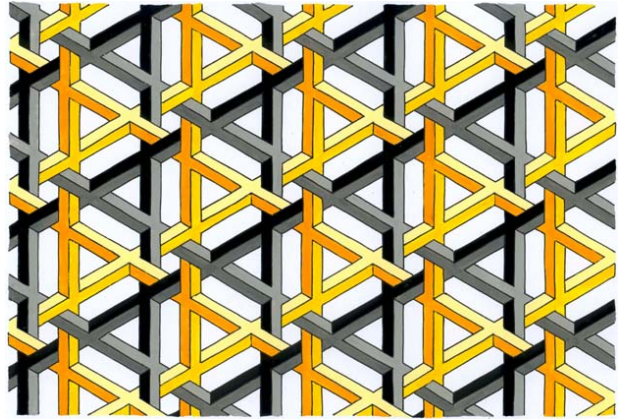
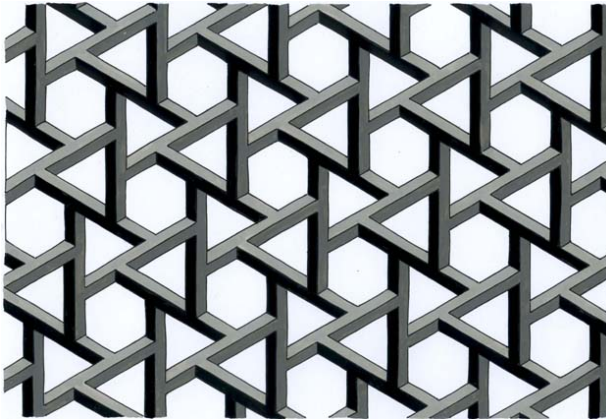
Constructions with tiling-lattices - Index 2

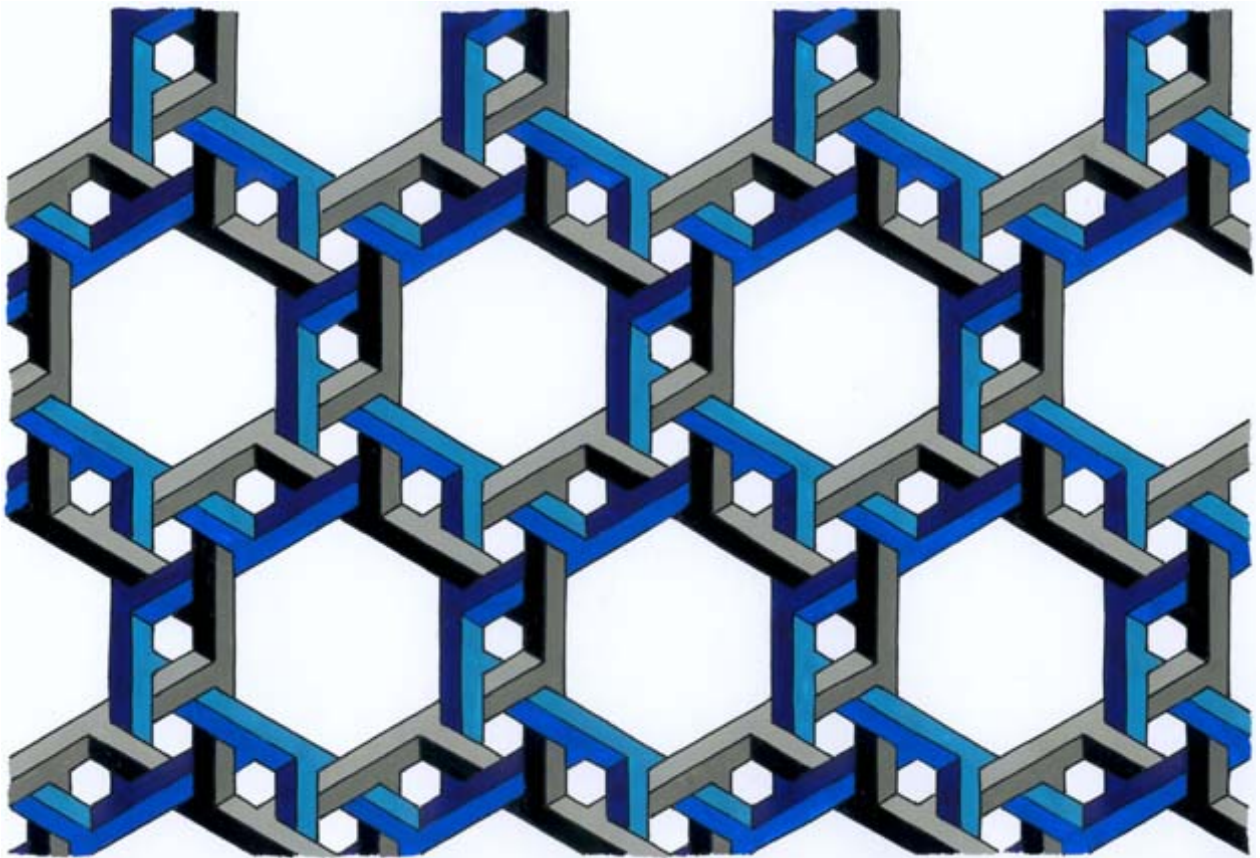


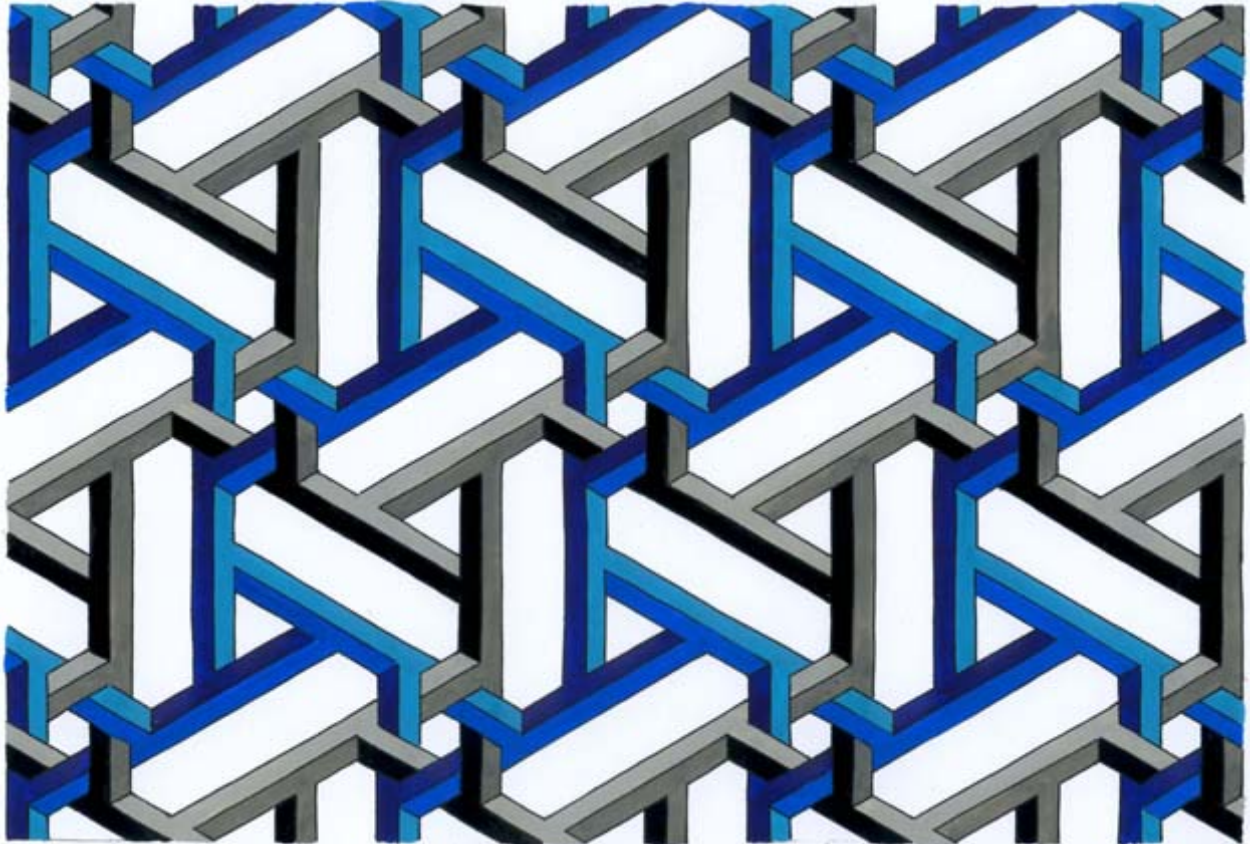


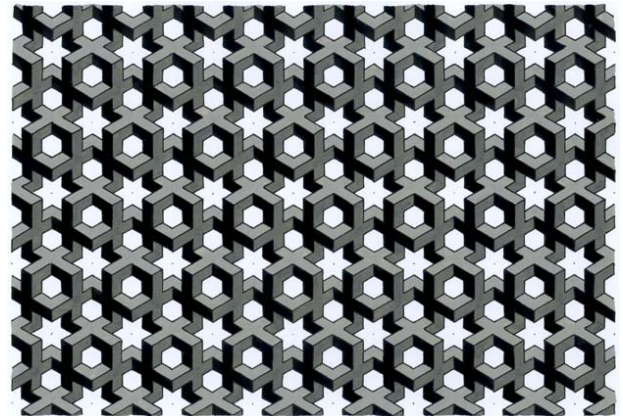
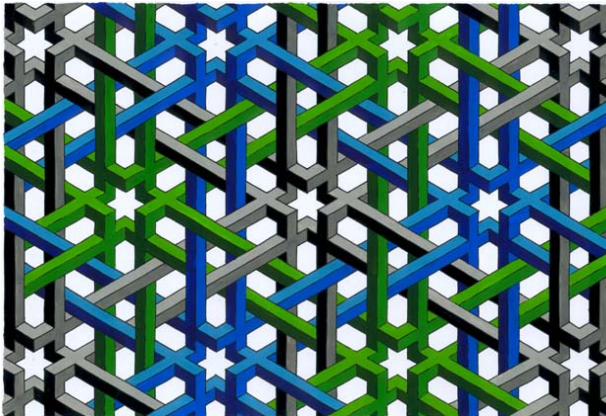
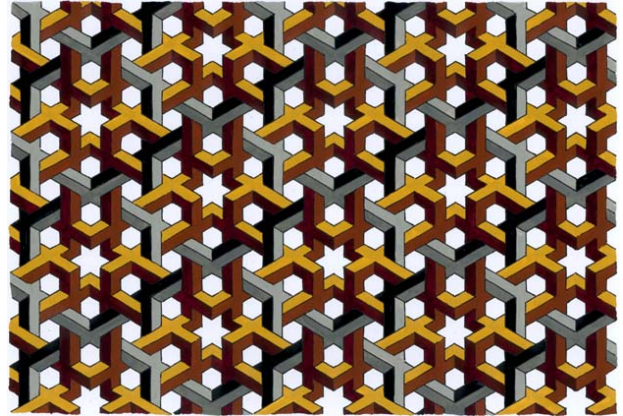
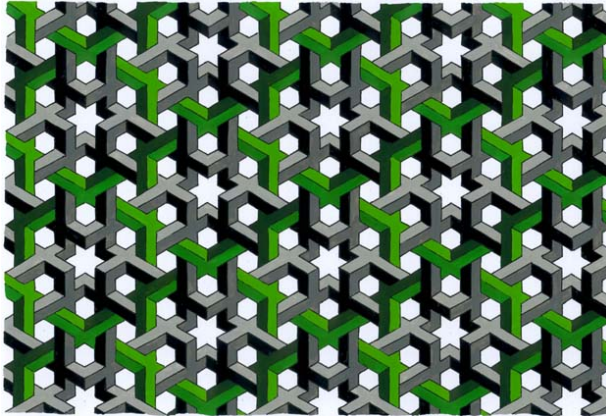


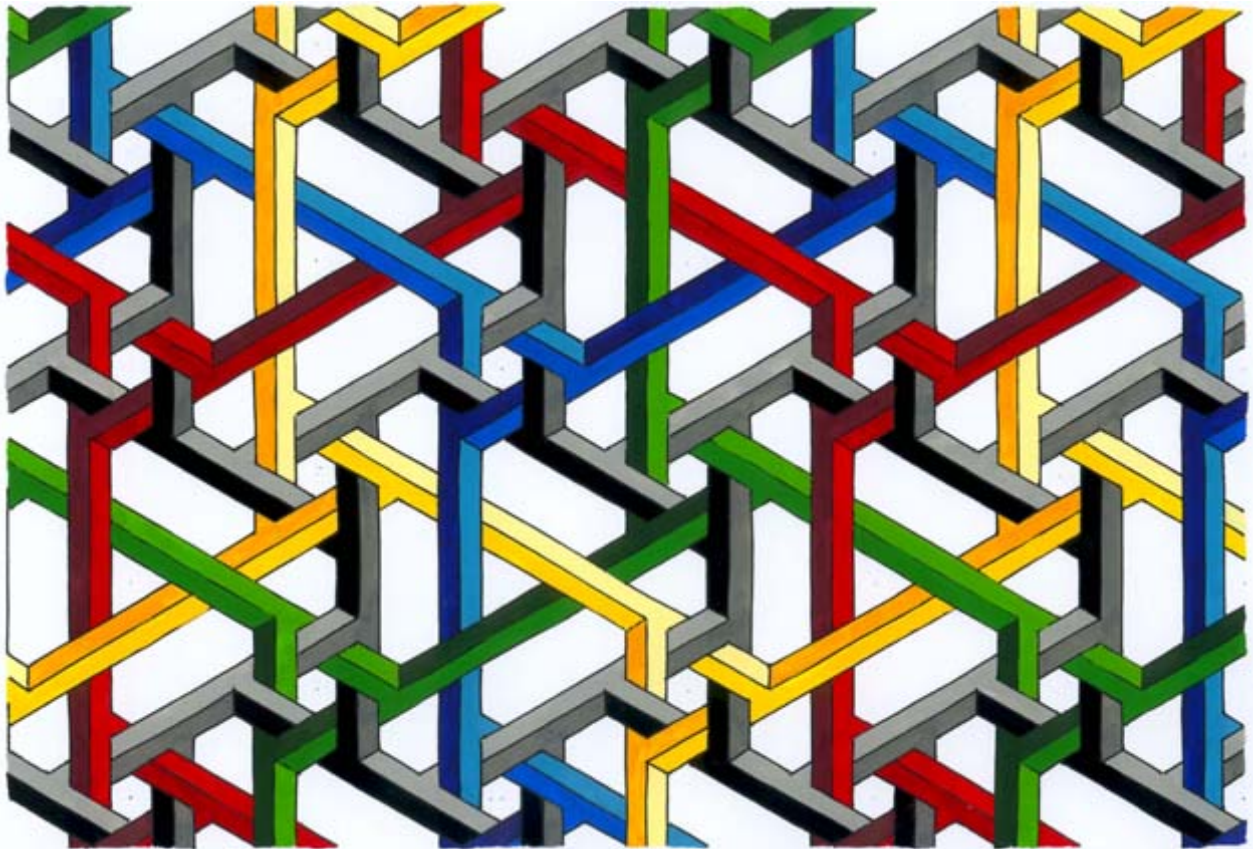


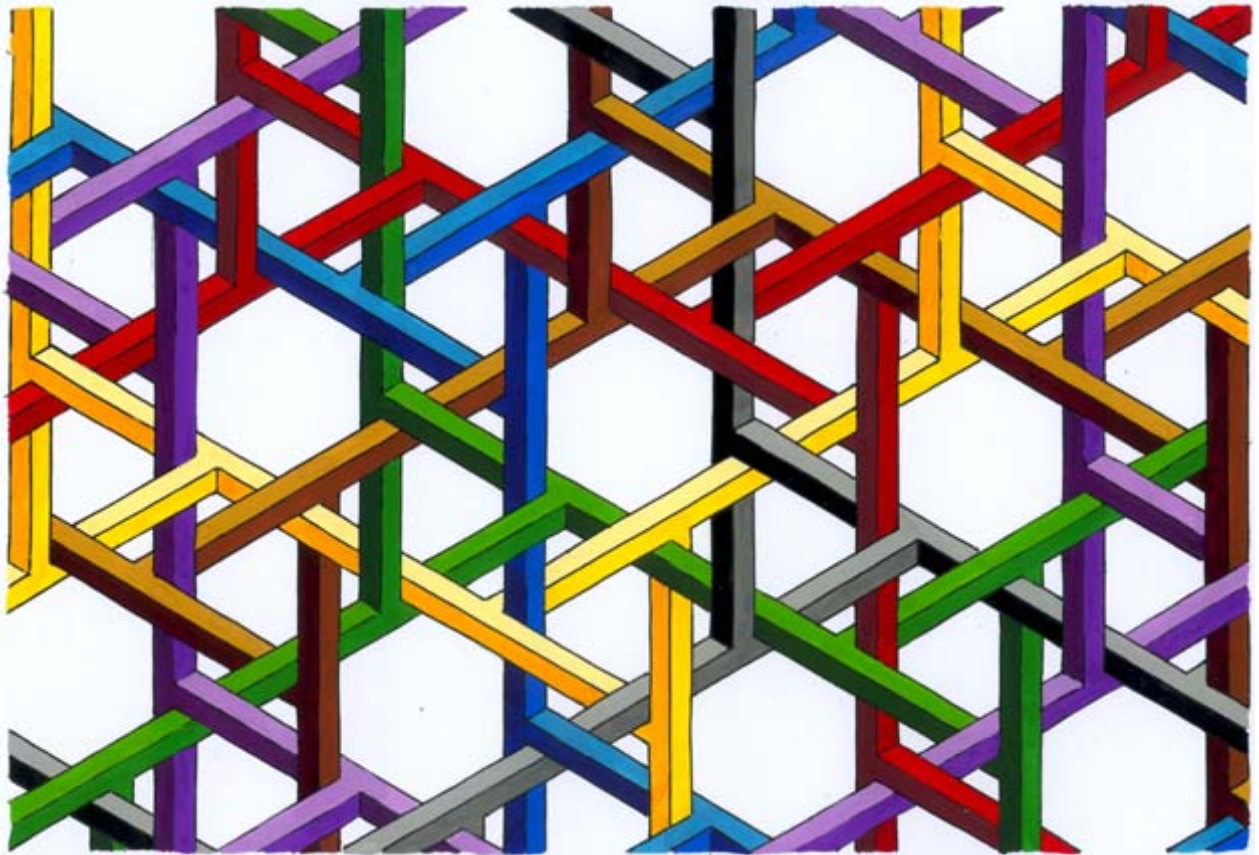


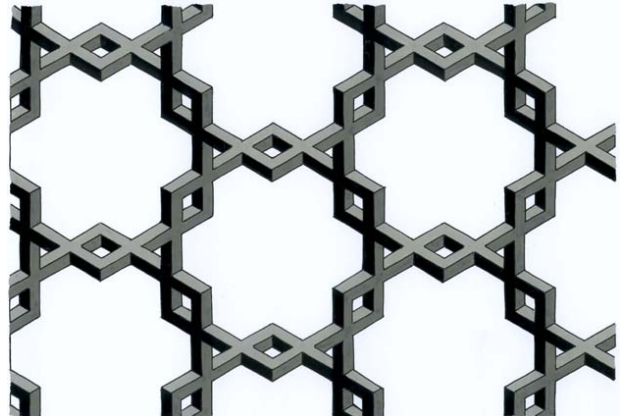
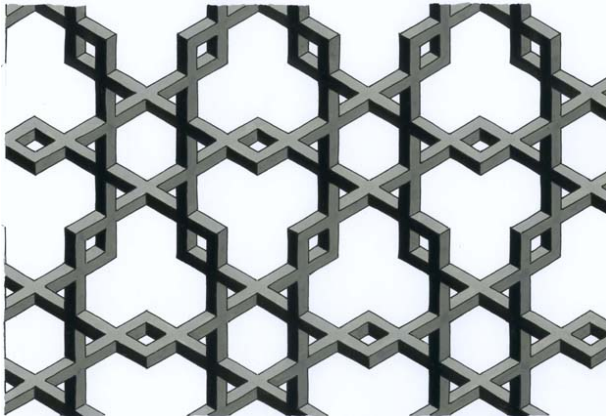
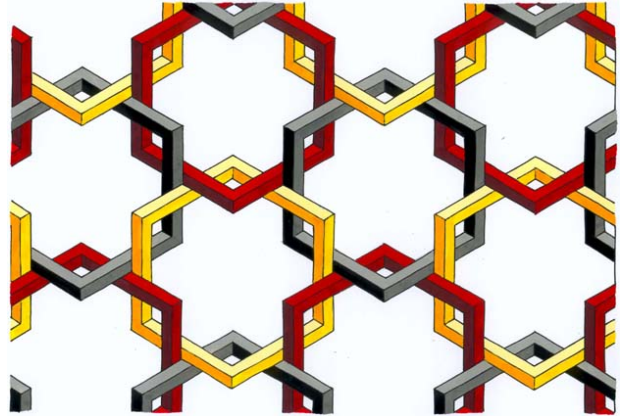
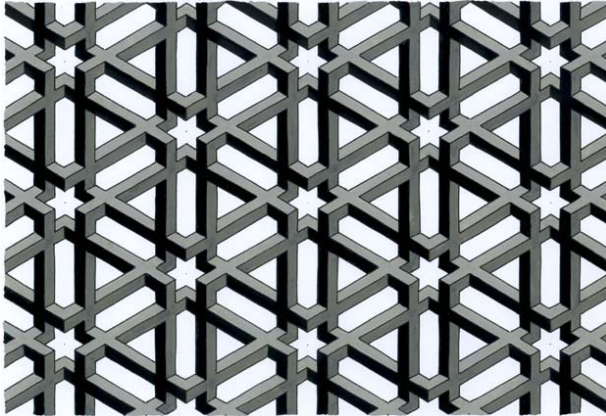


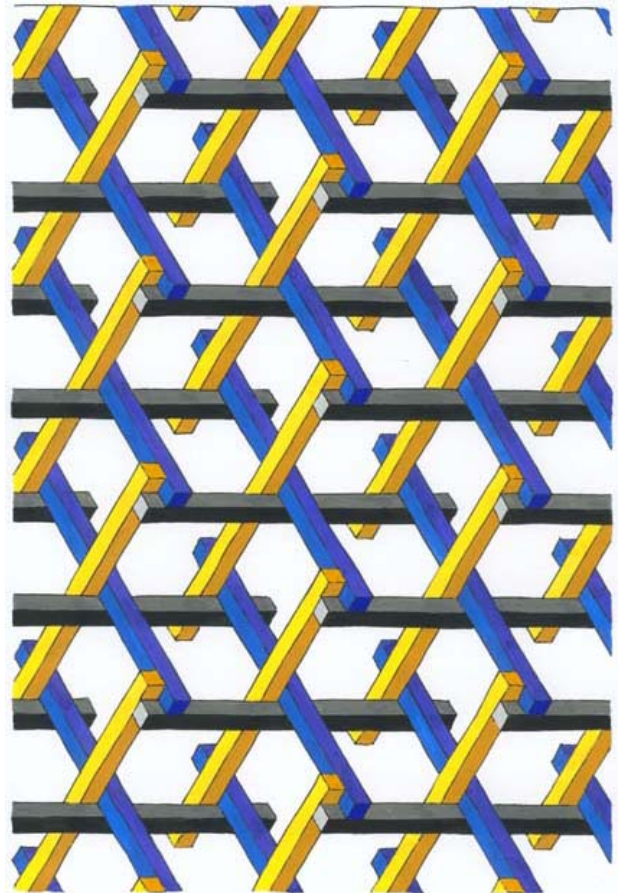
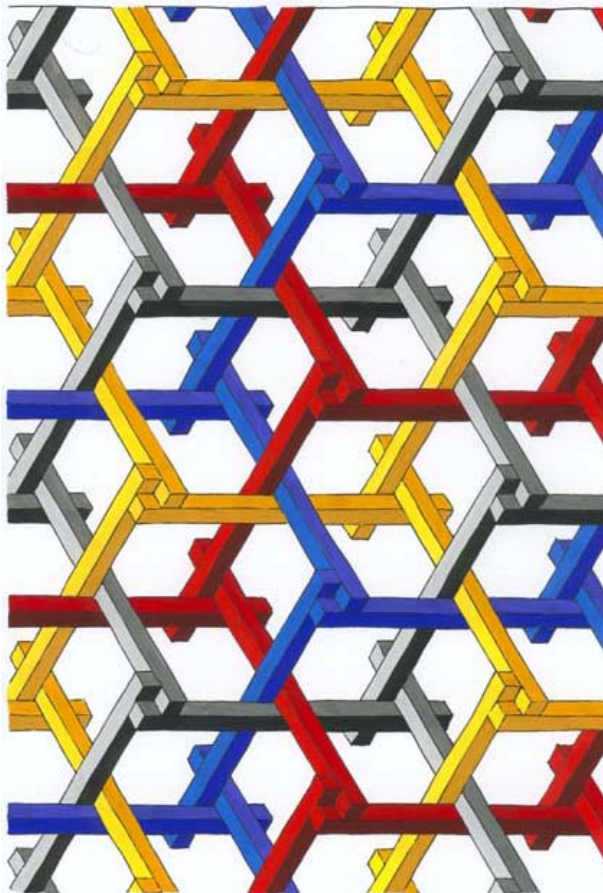


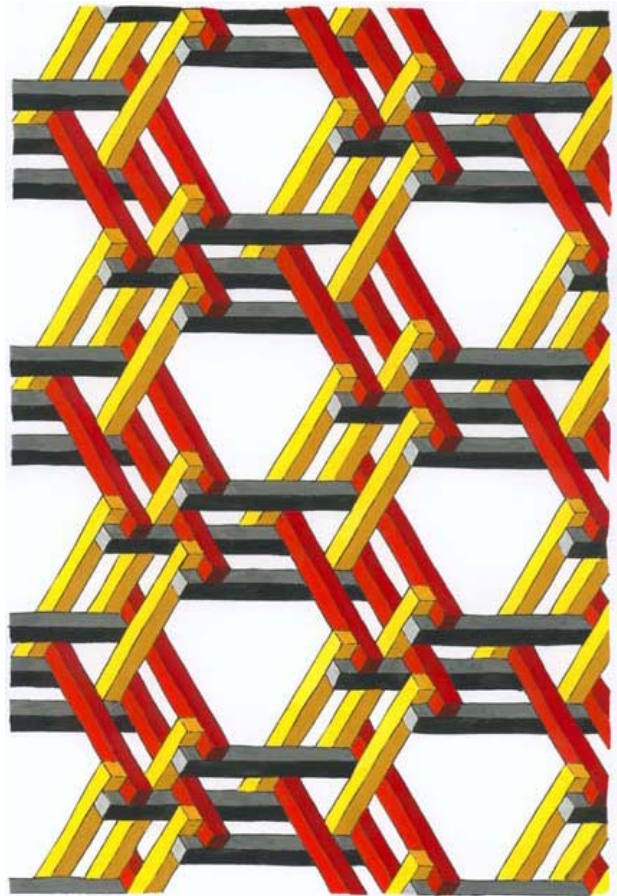
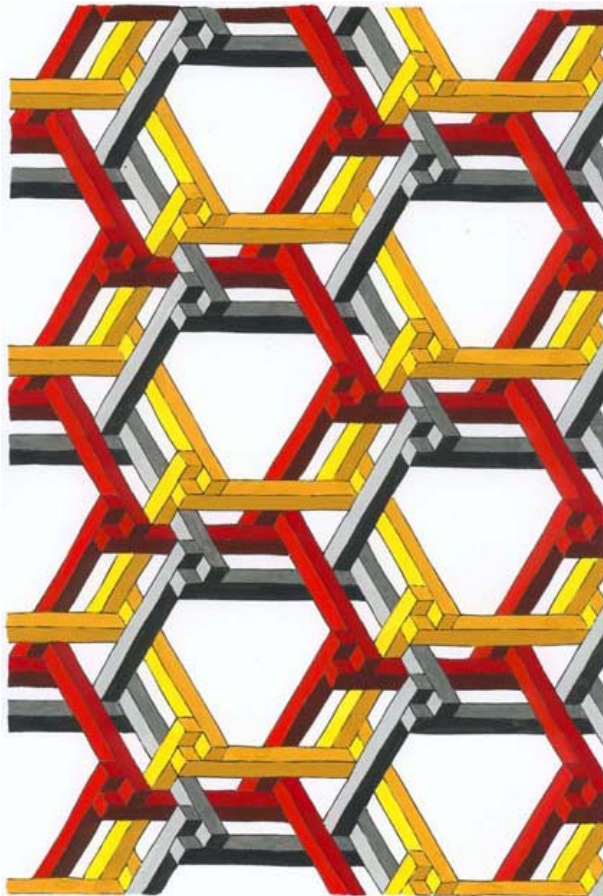


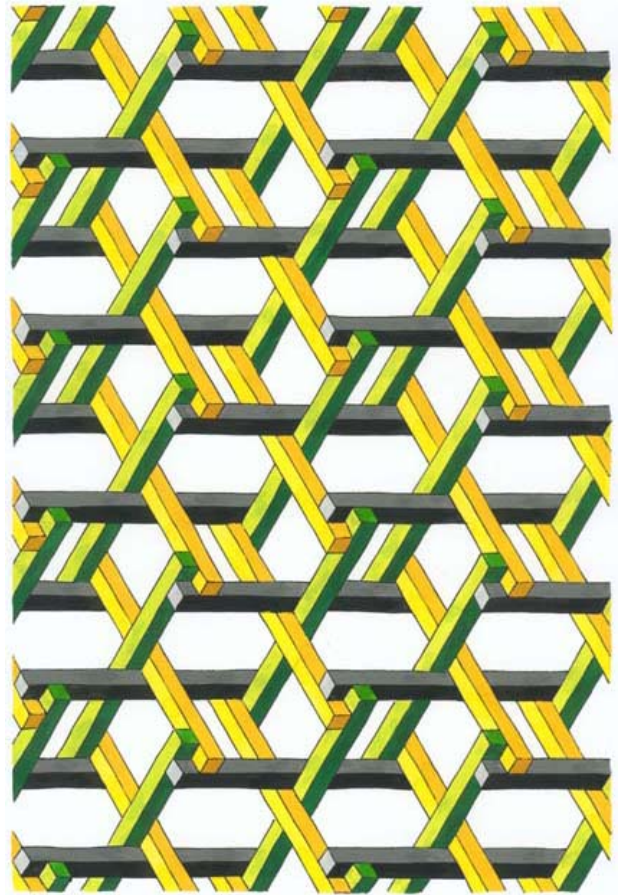
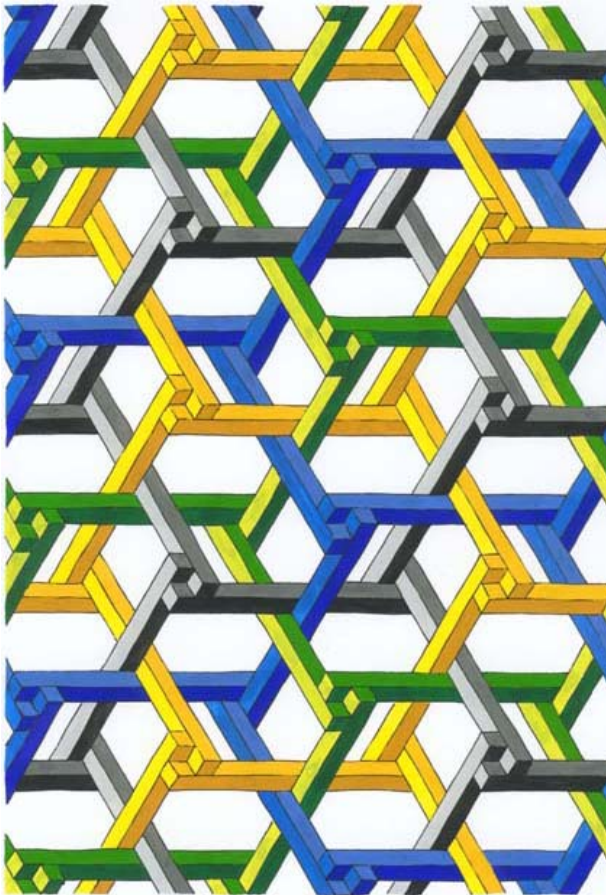


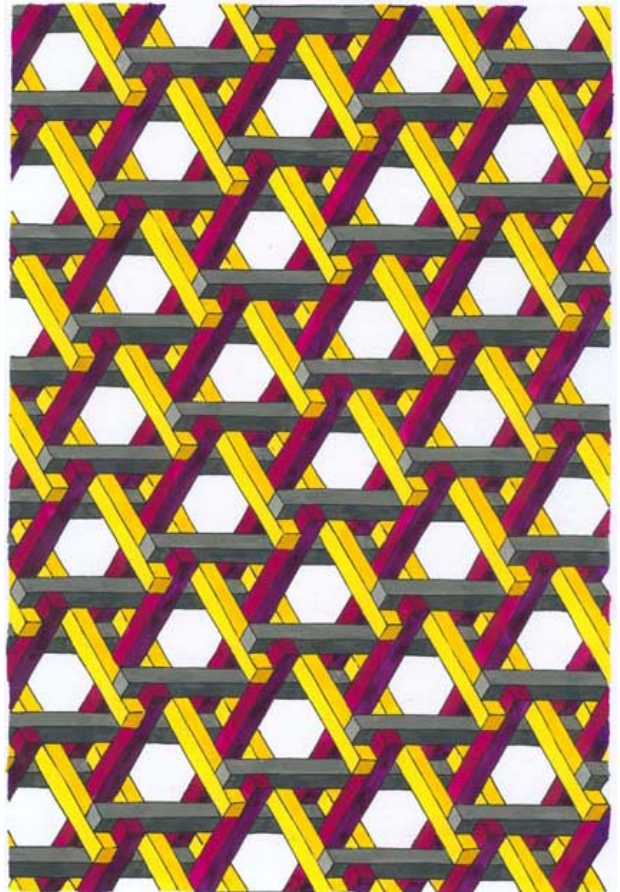
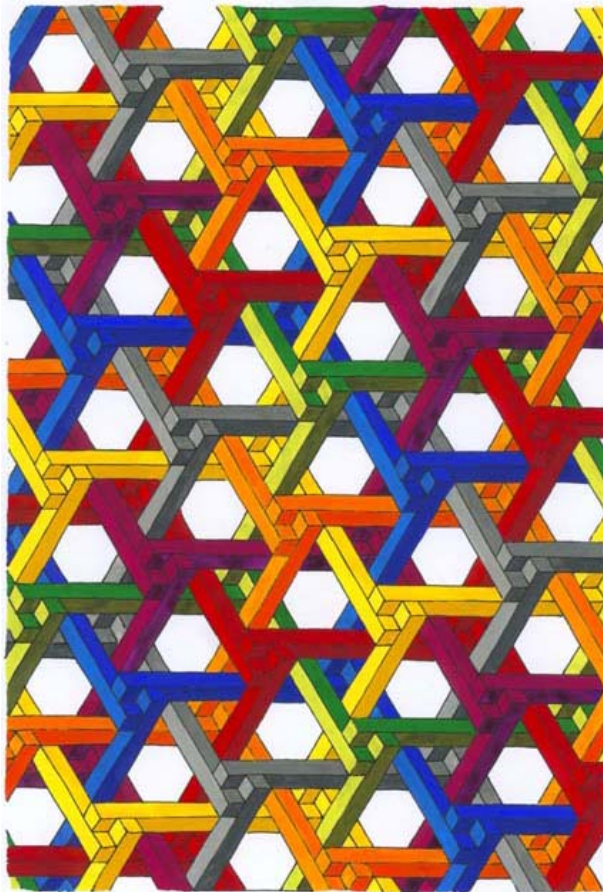


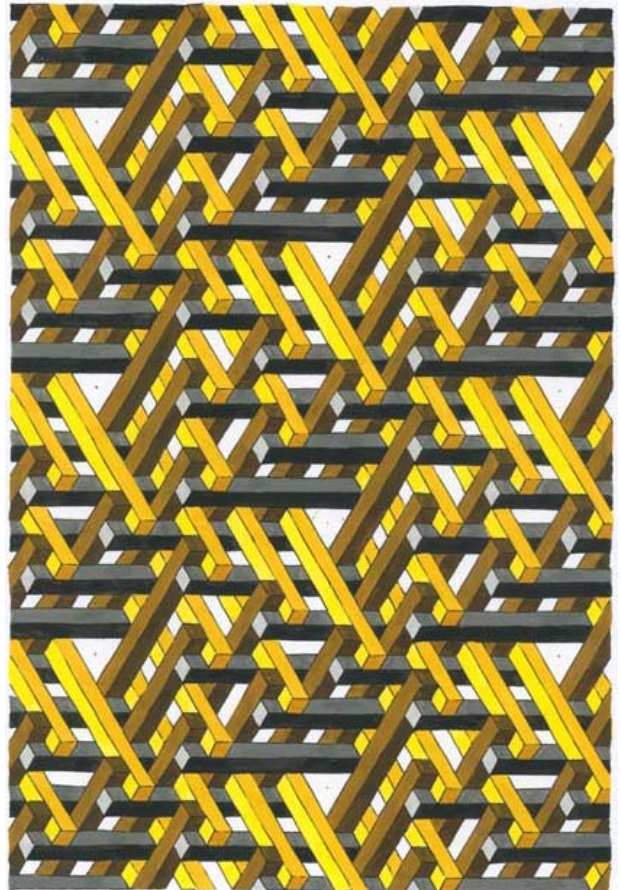
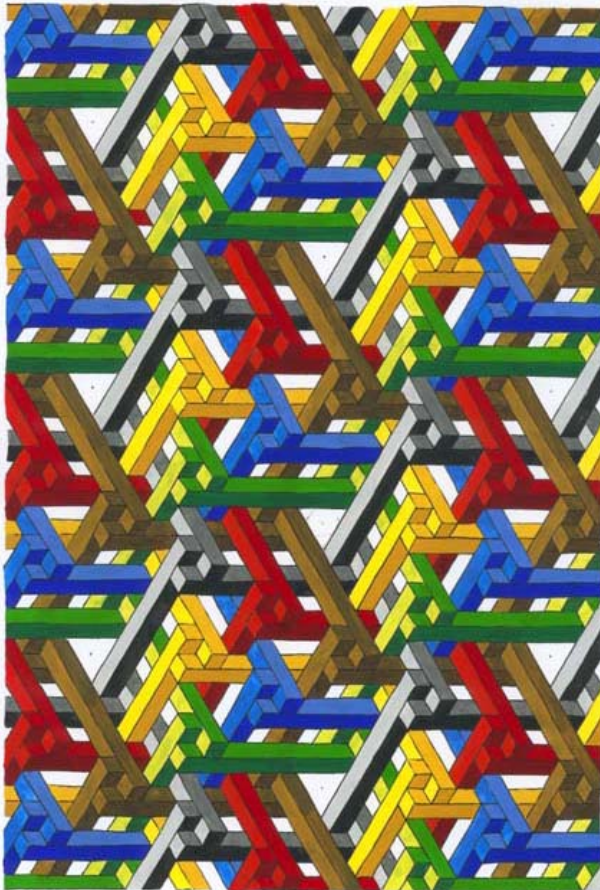


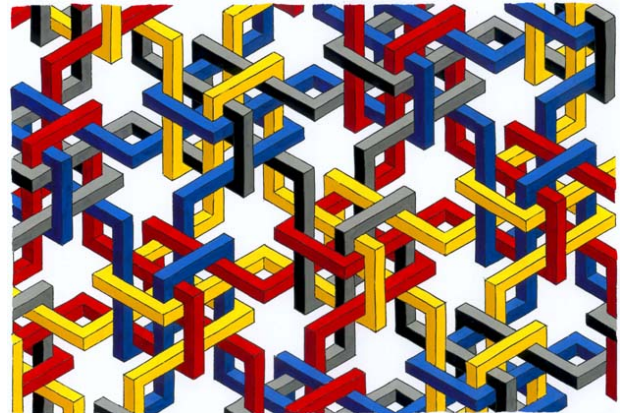
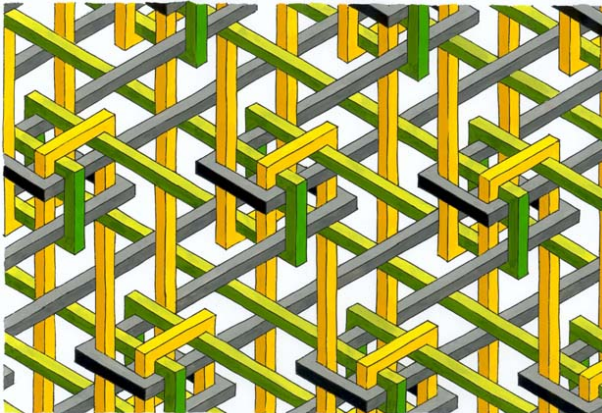
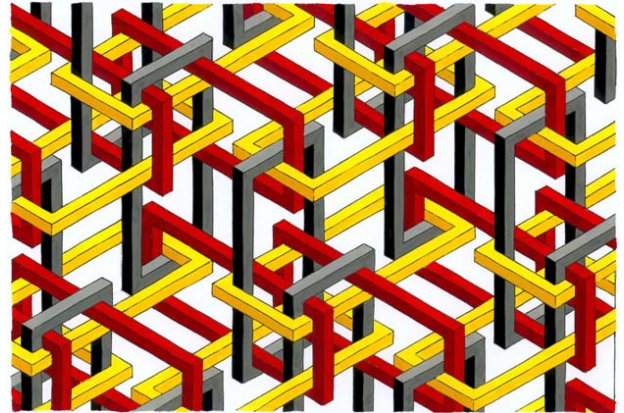
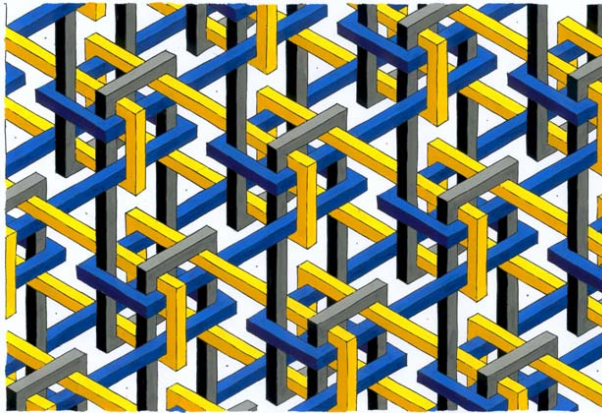




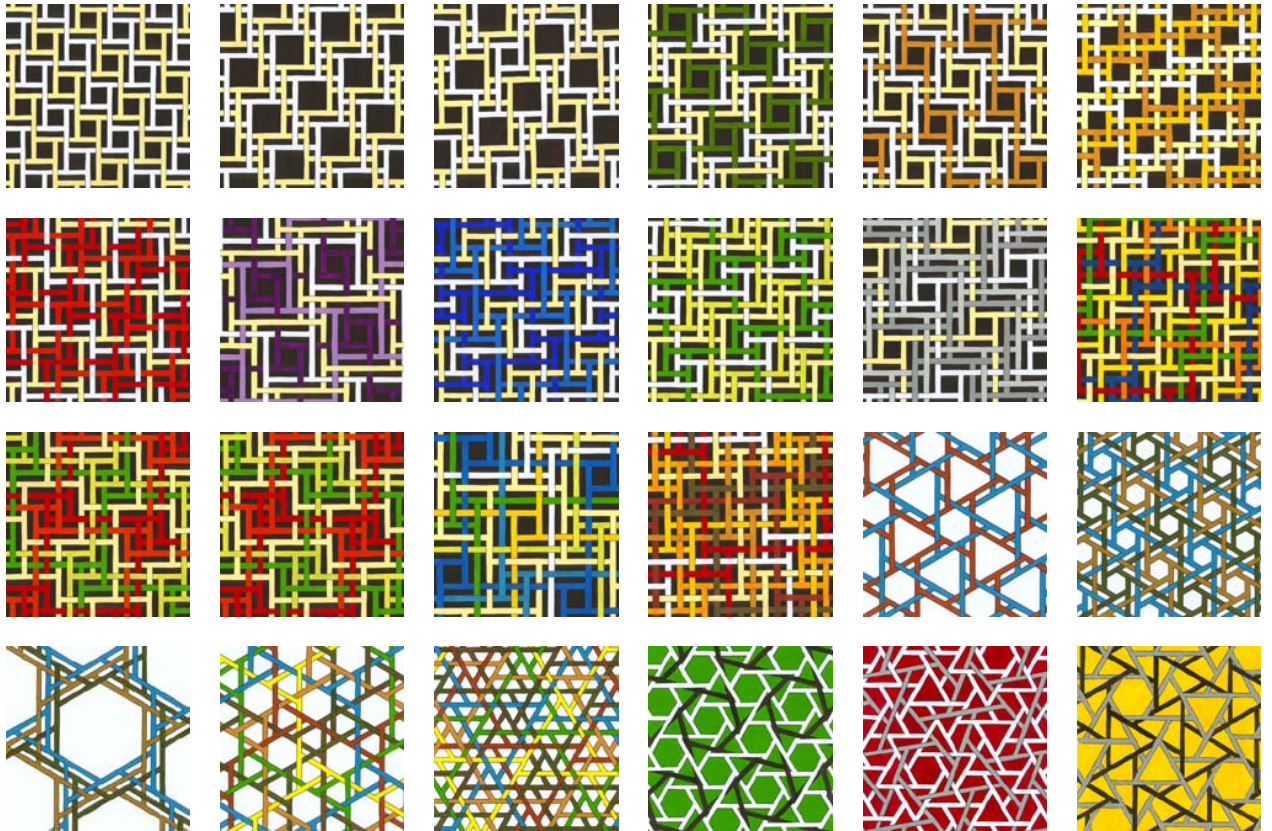




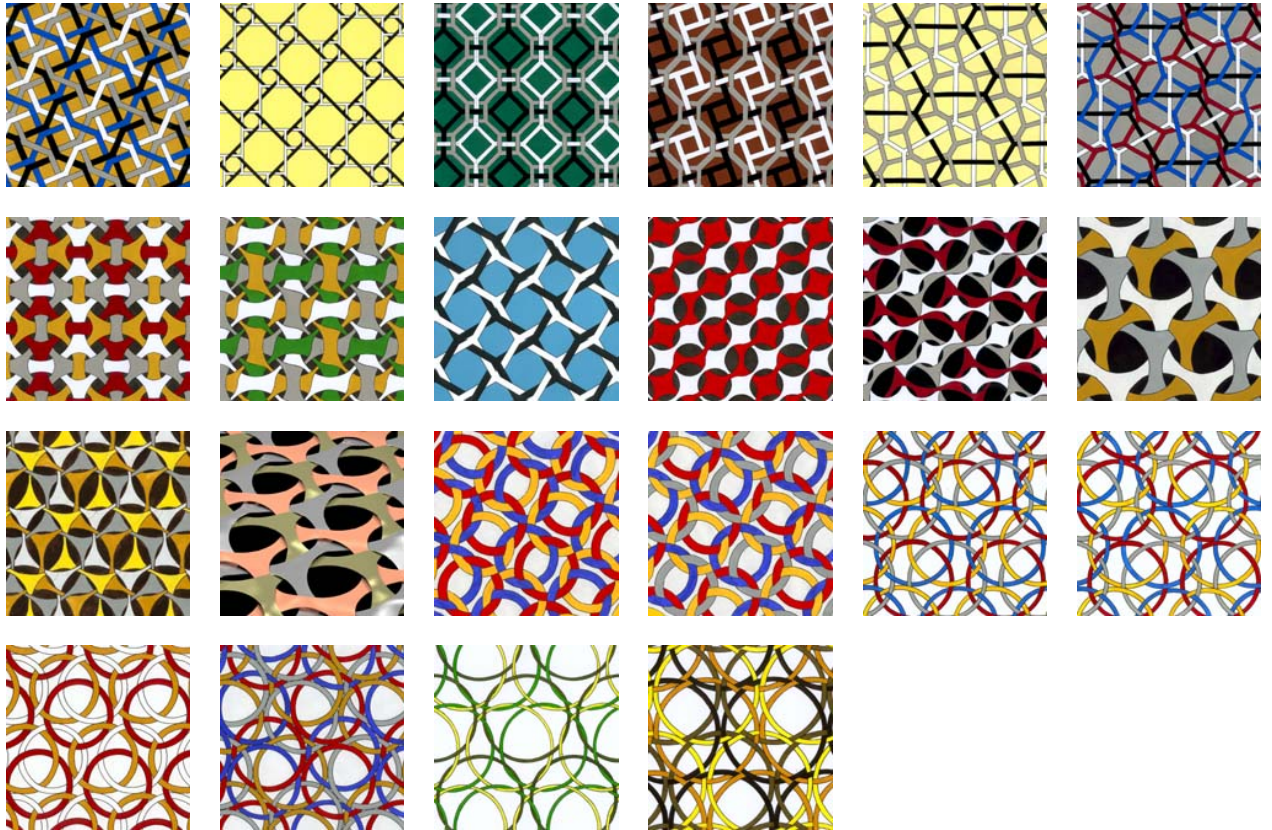


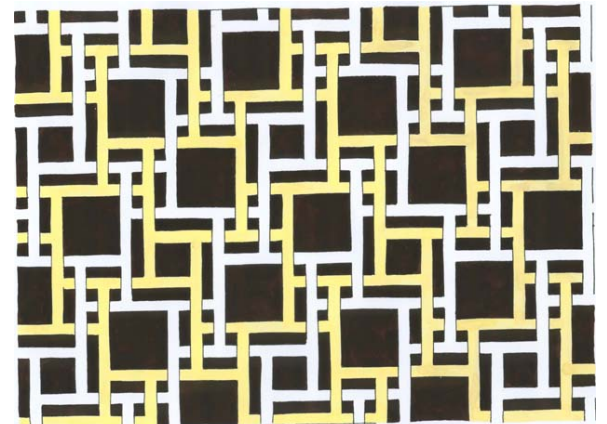
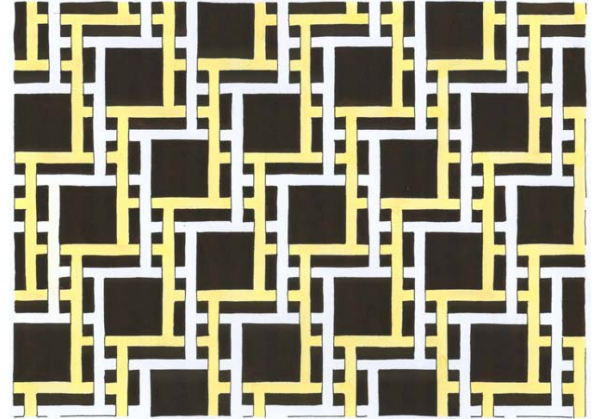
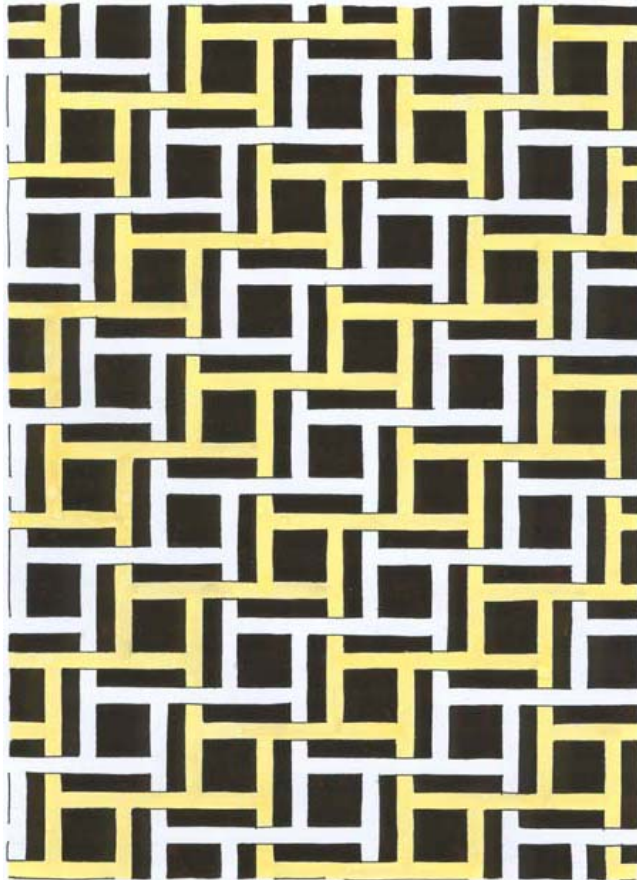


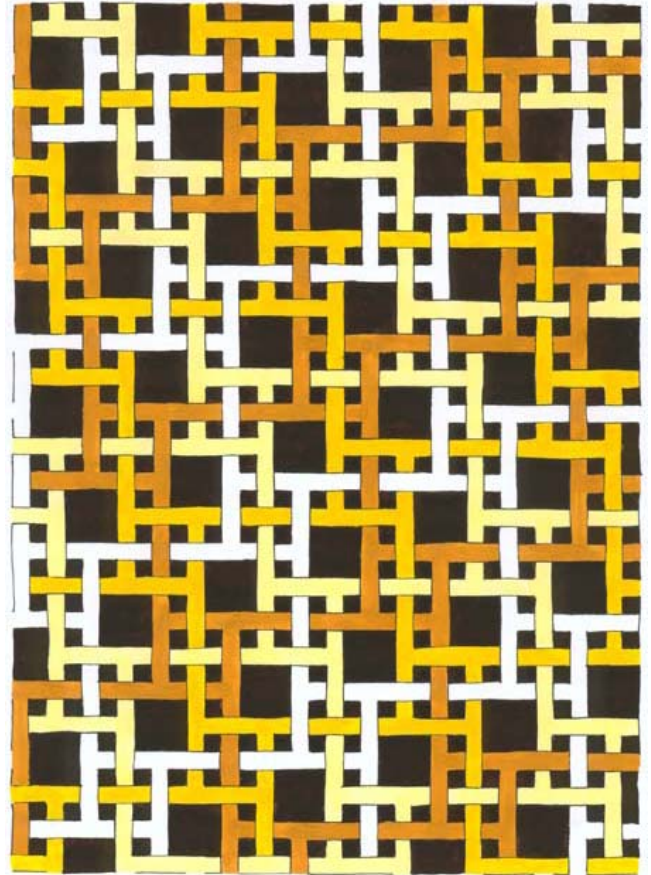
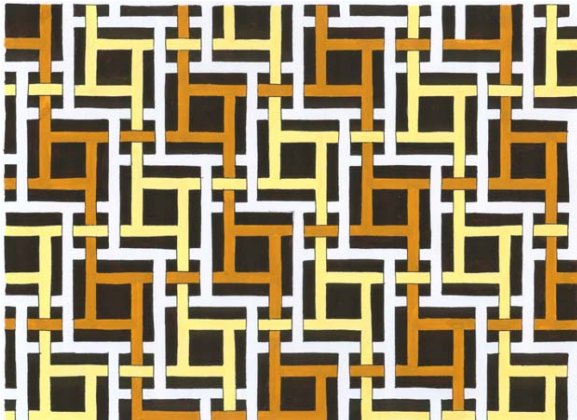
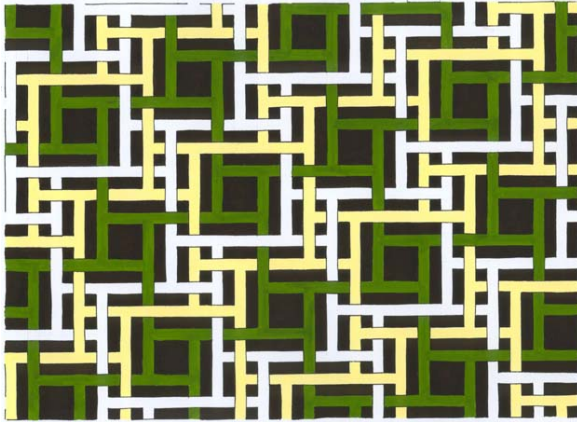
More layers, different layers - Index 1

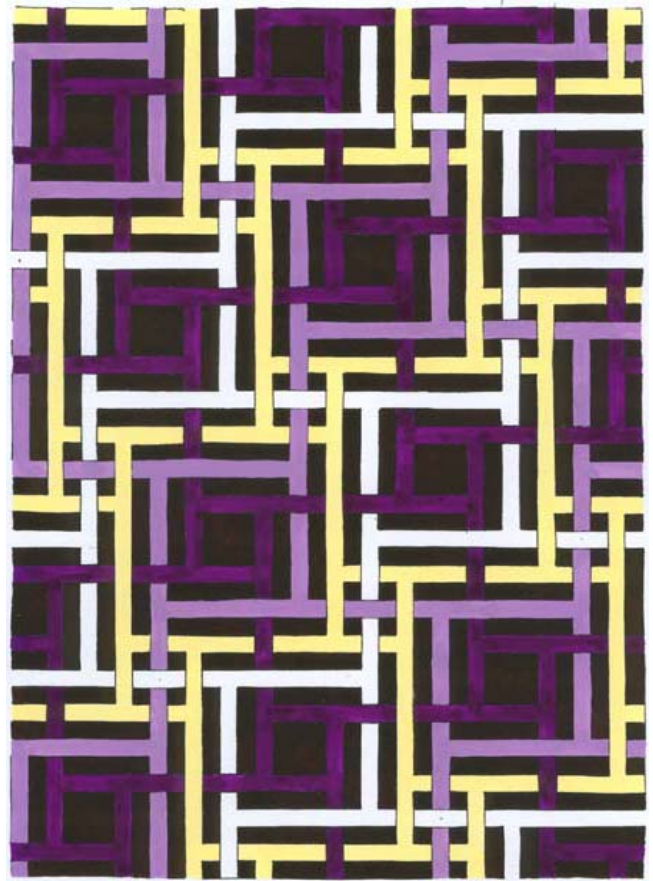
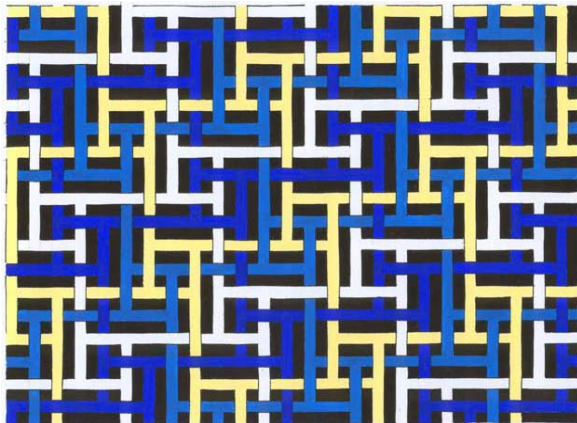
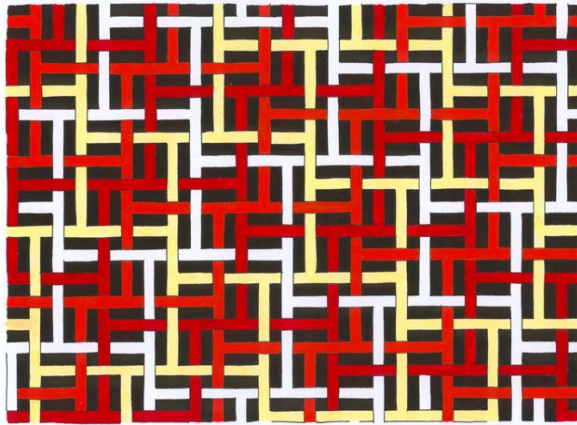


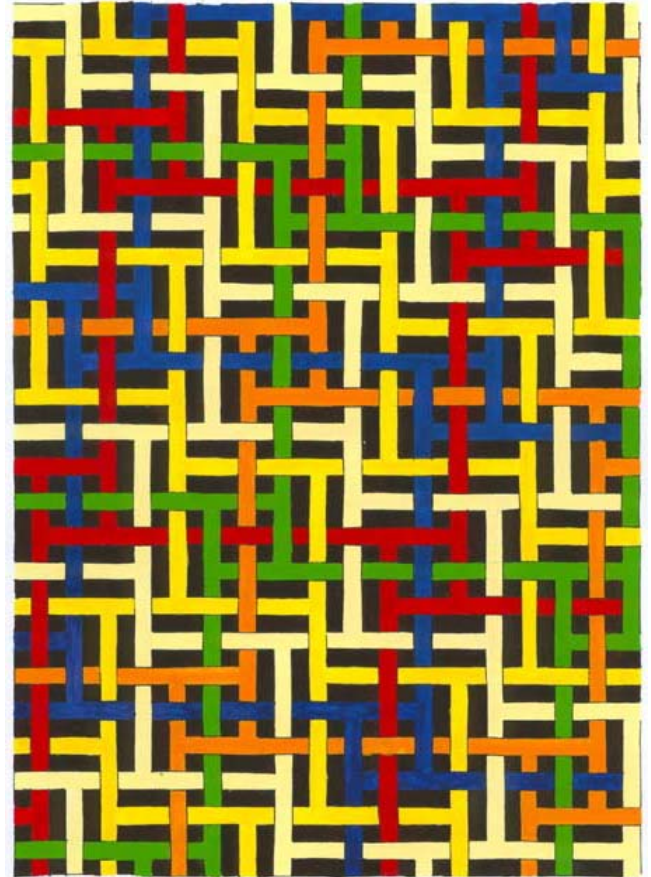
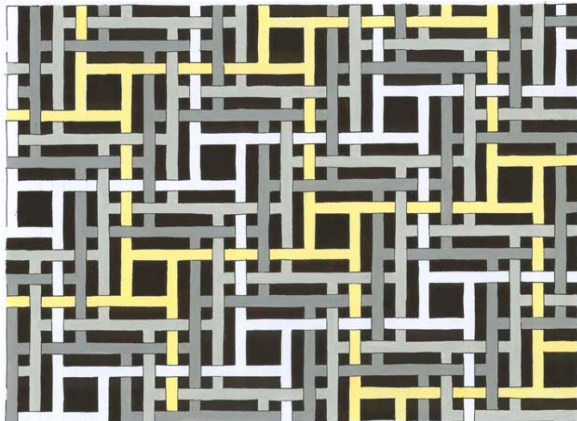
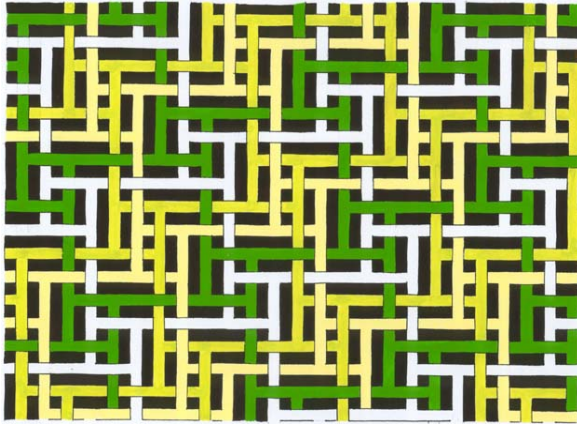
More layers, different layers - Index 2

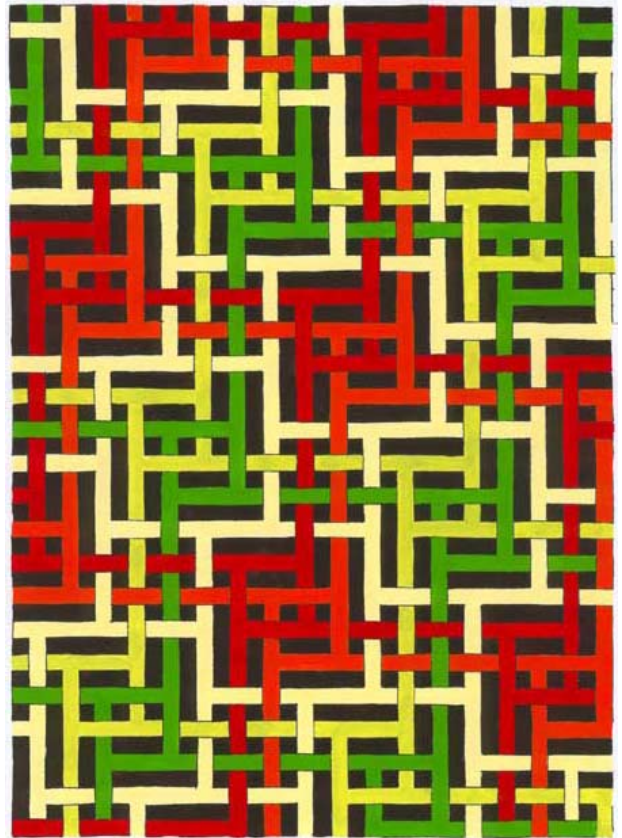
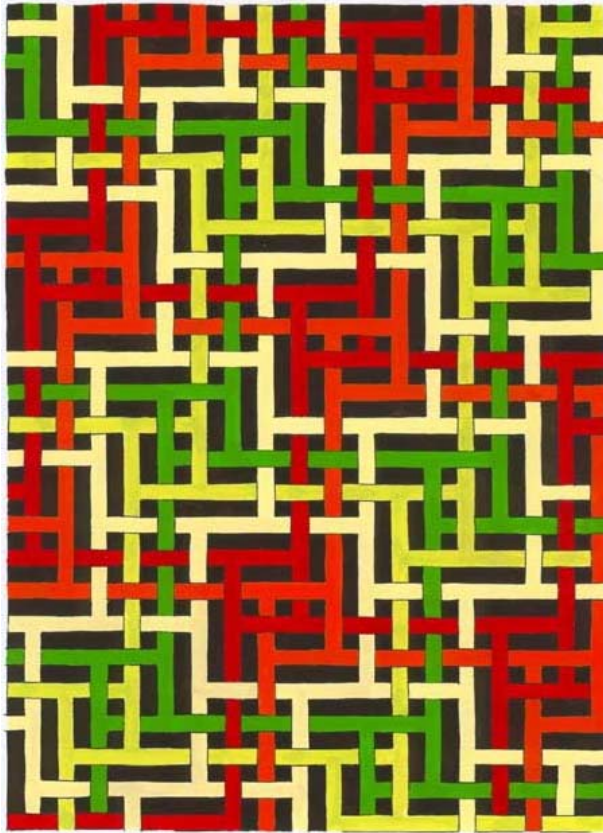


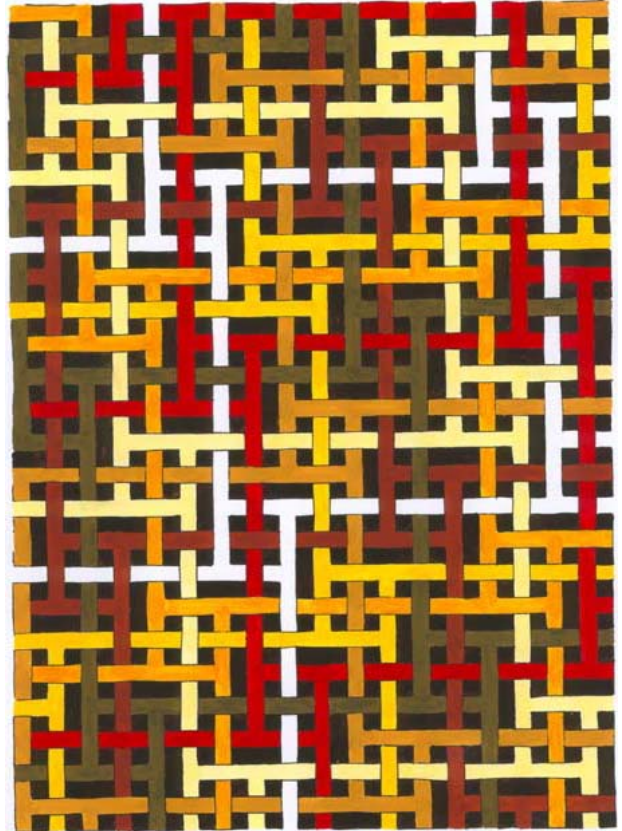
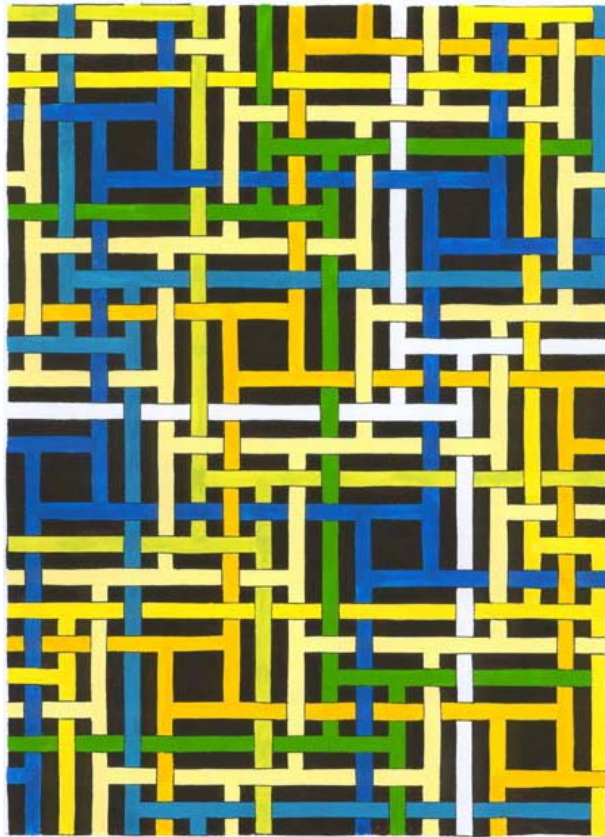


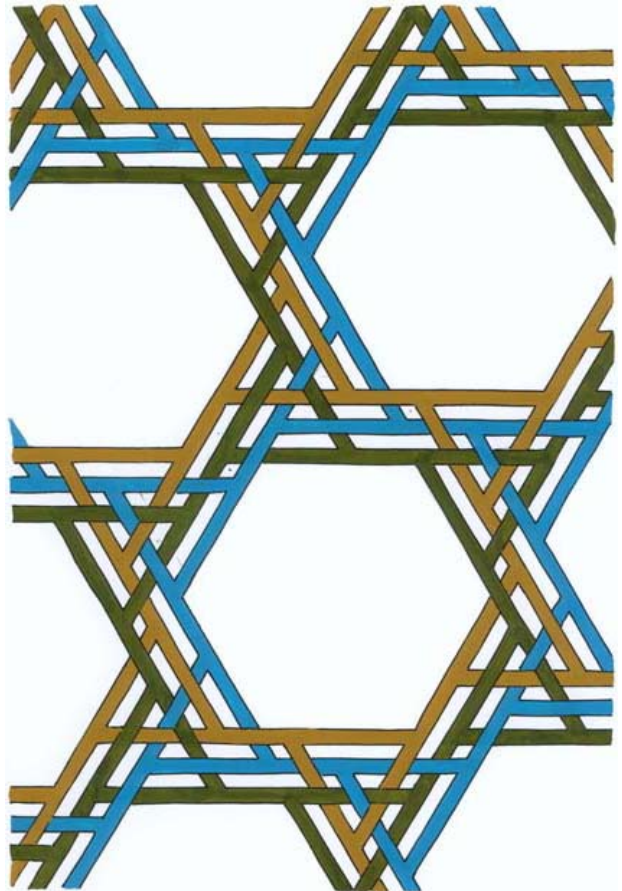
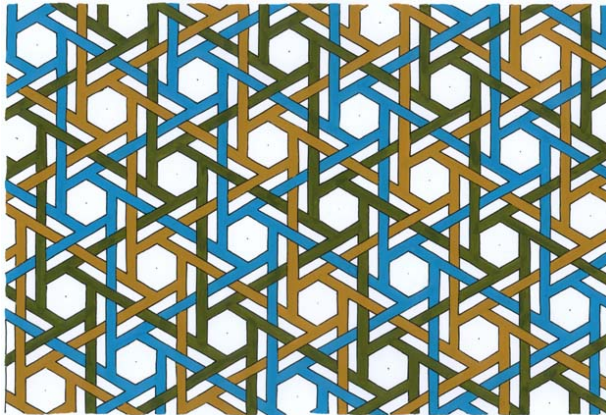
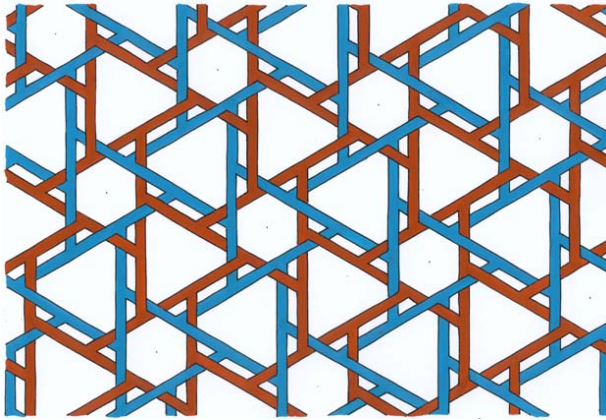


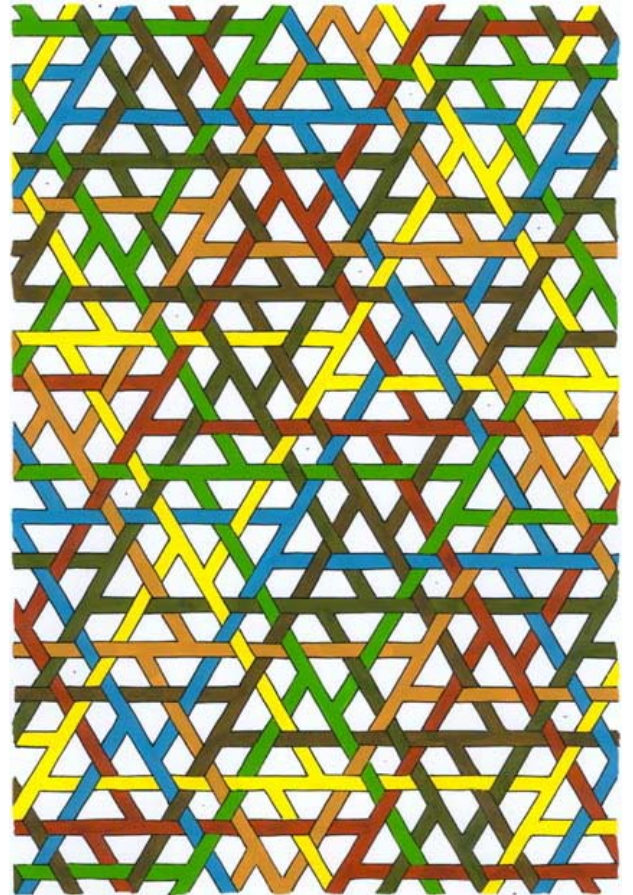
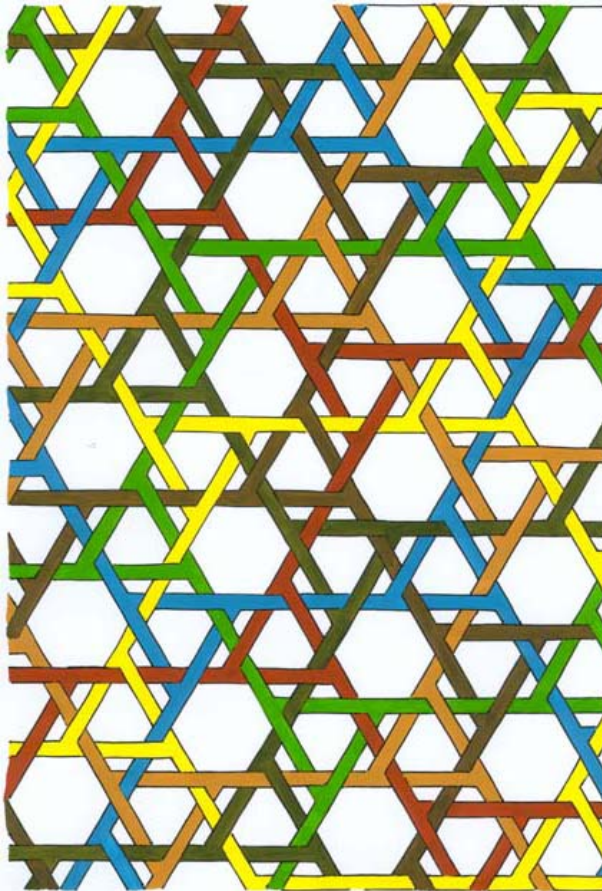


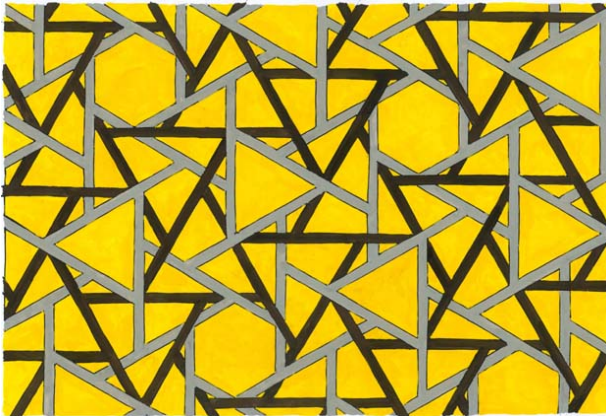
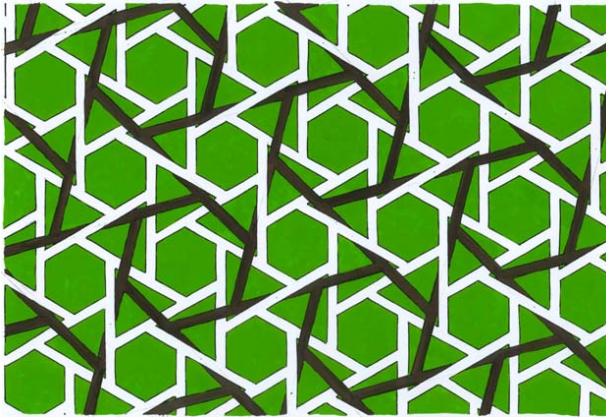


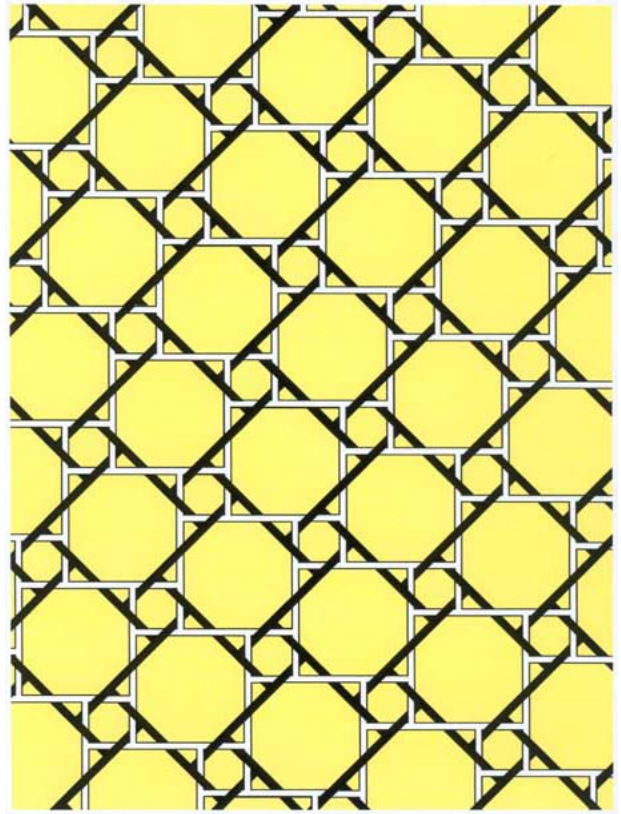


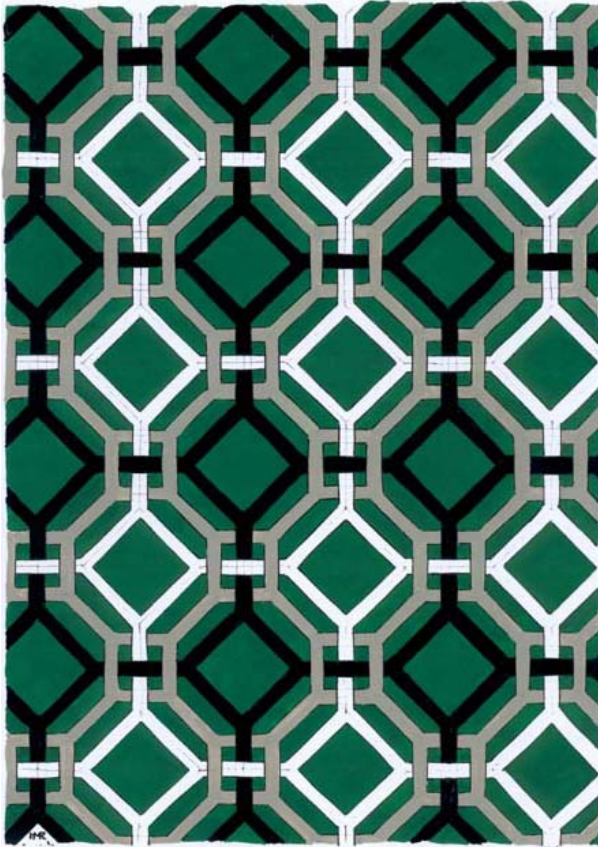


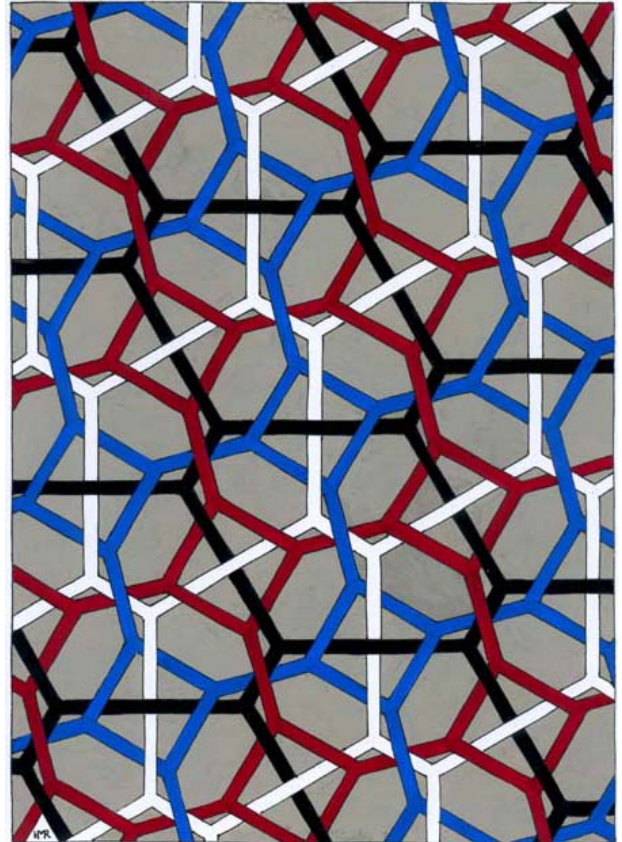
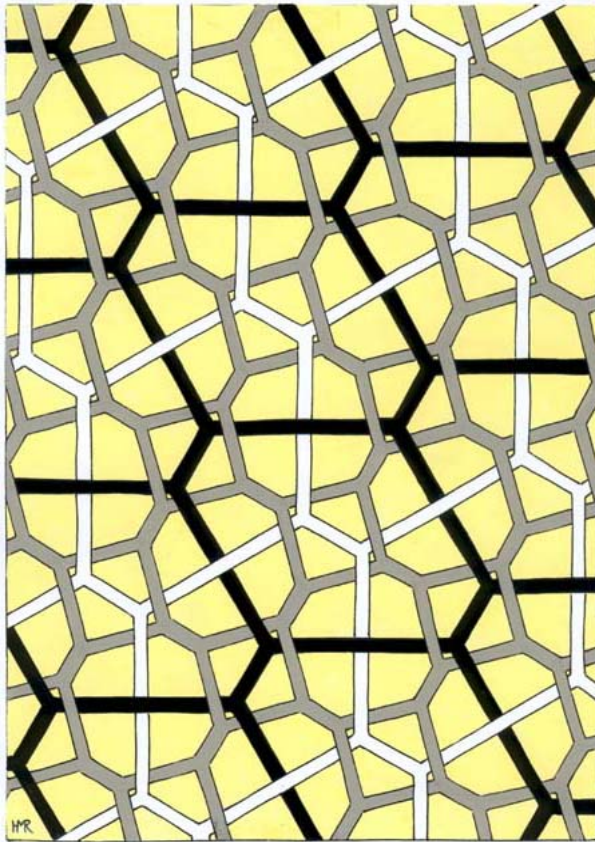


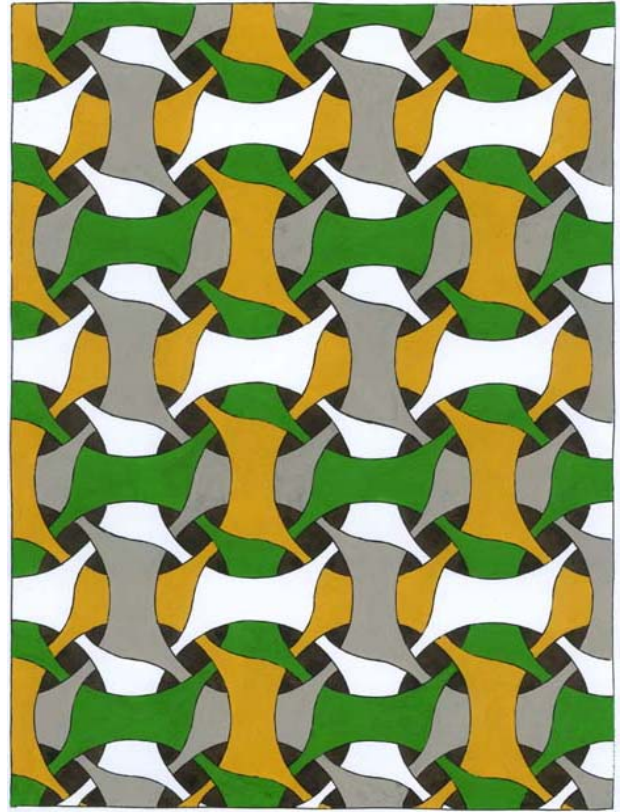
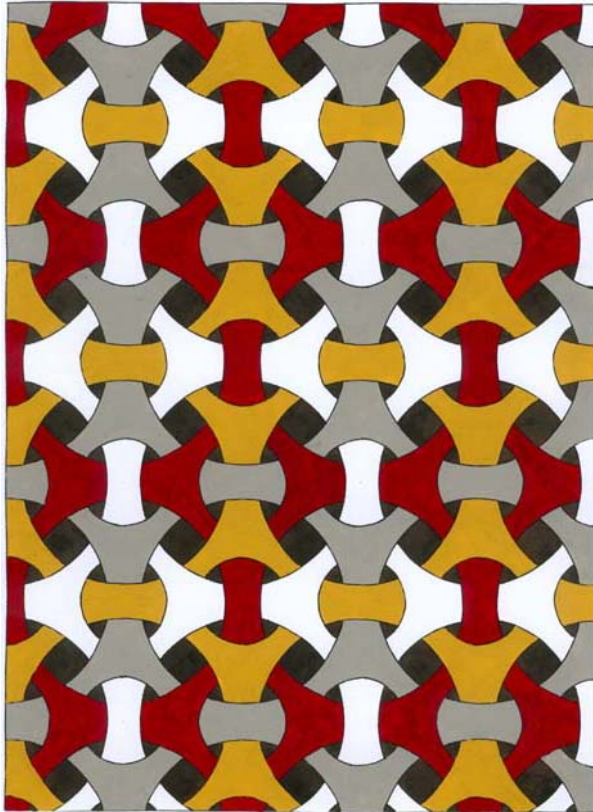


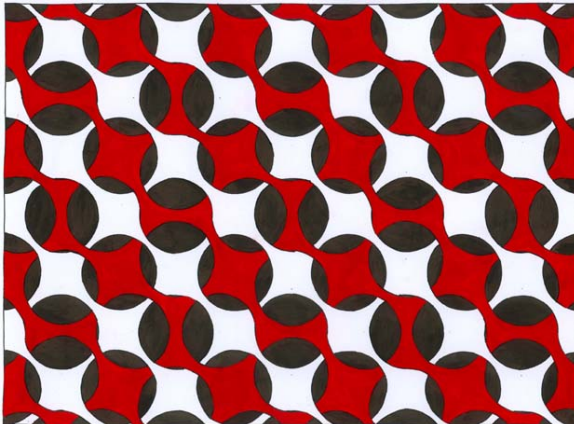
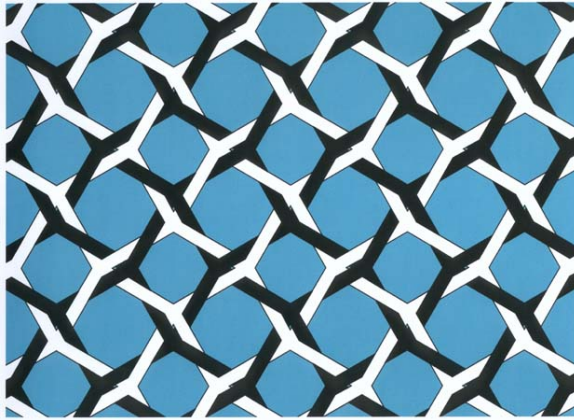


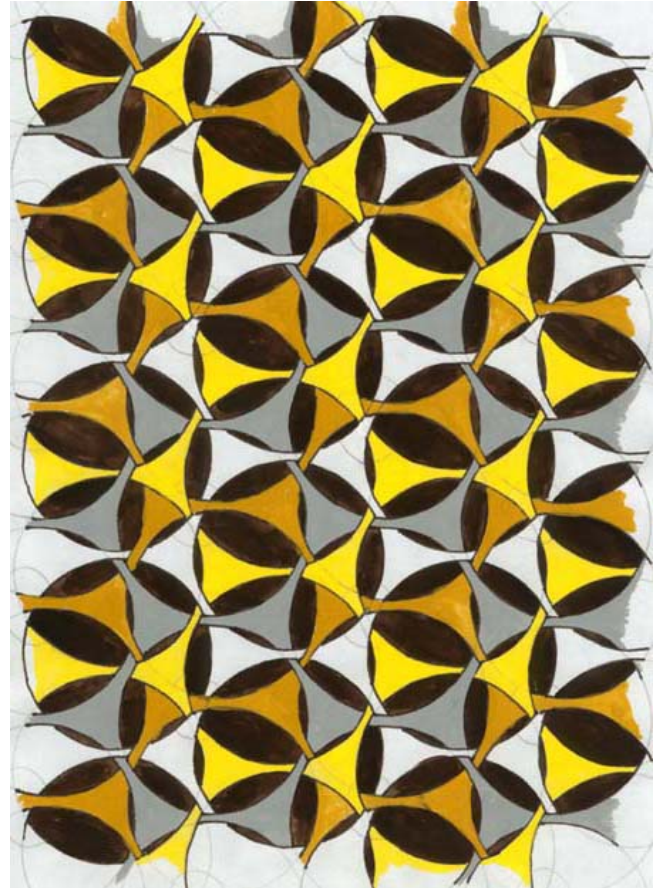
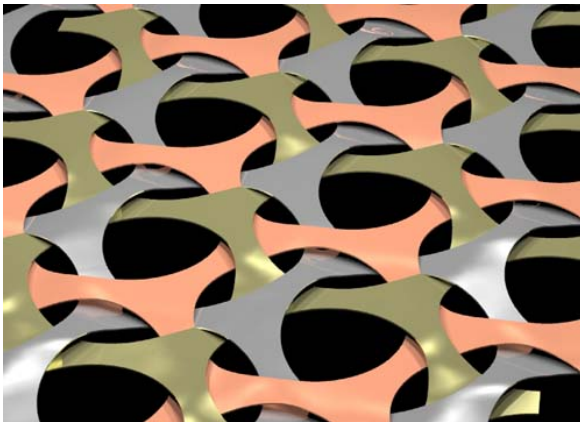
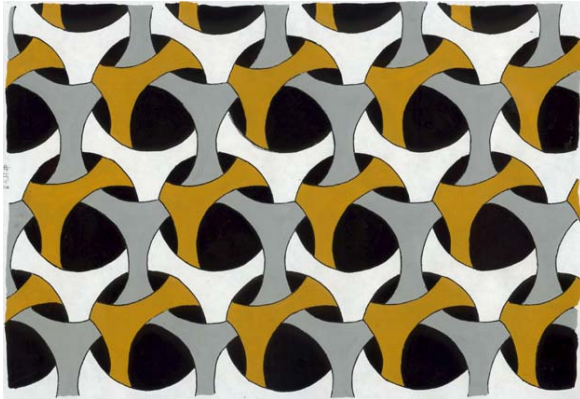


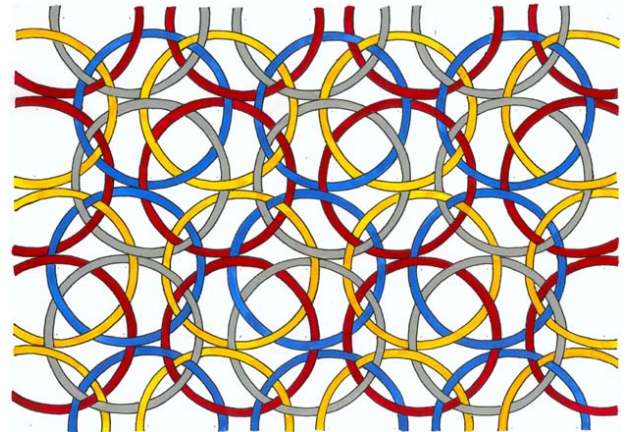
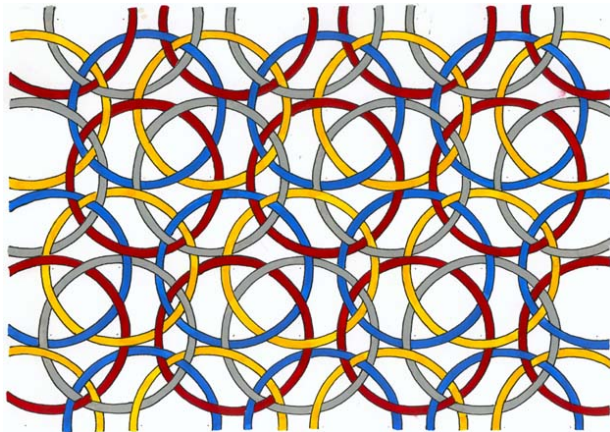
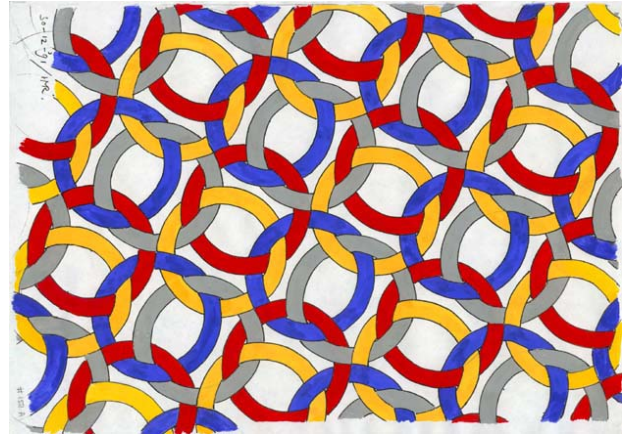
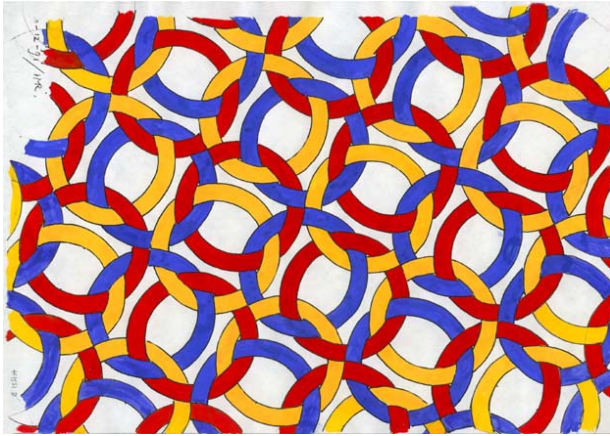


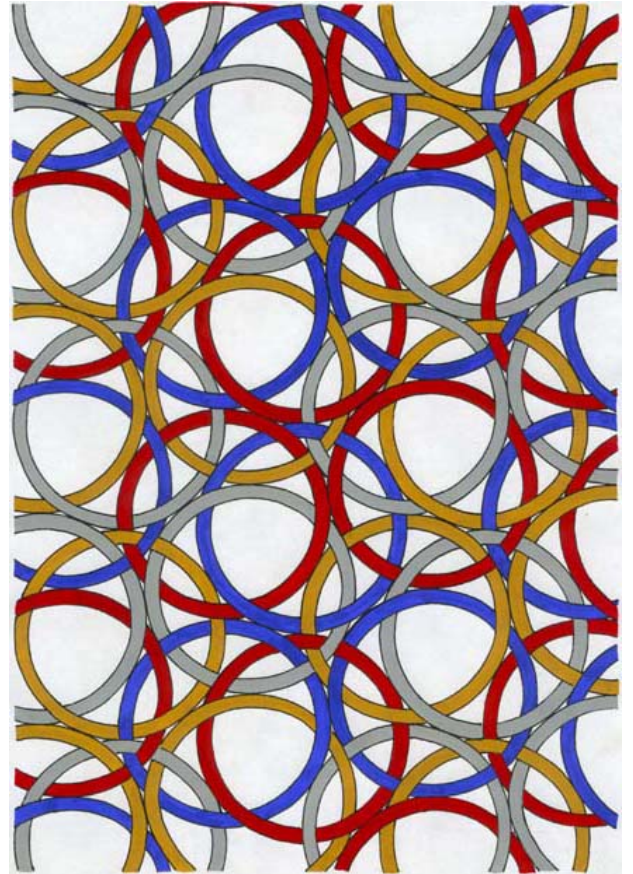
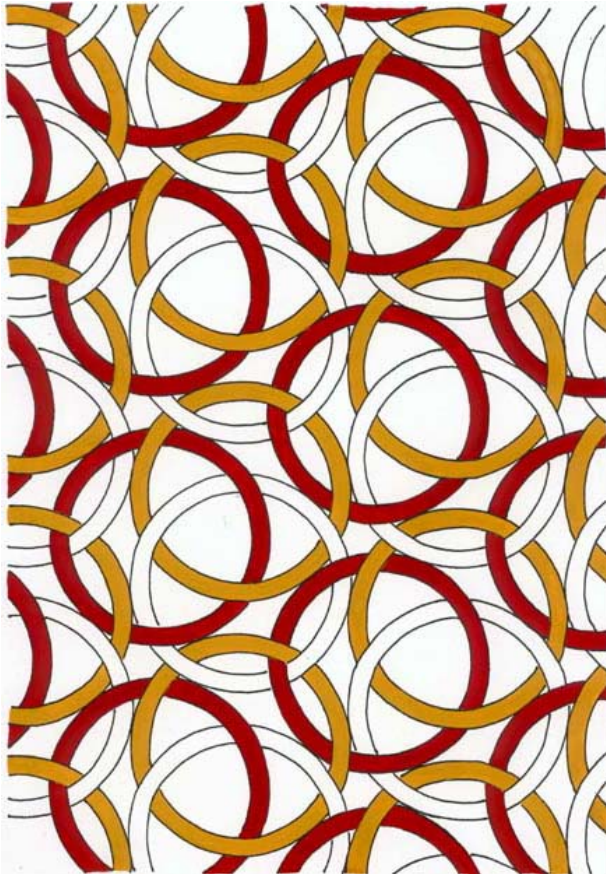


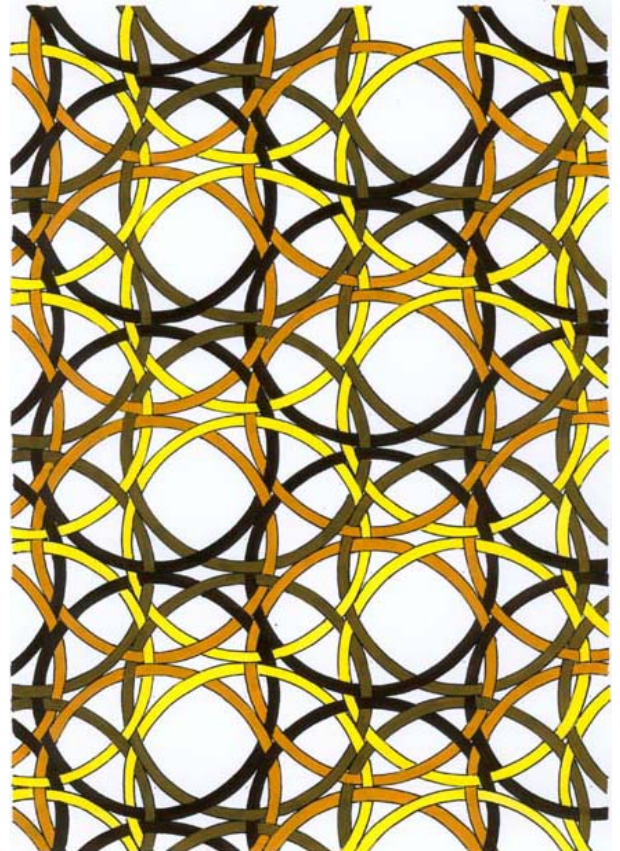
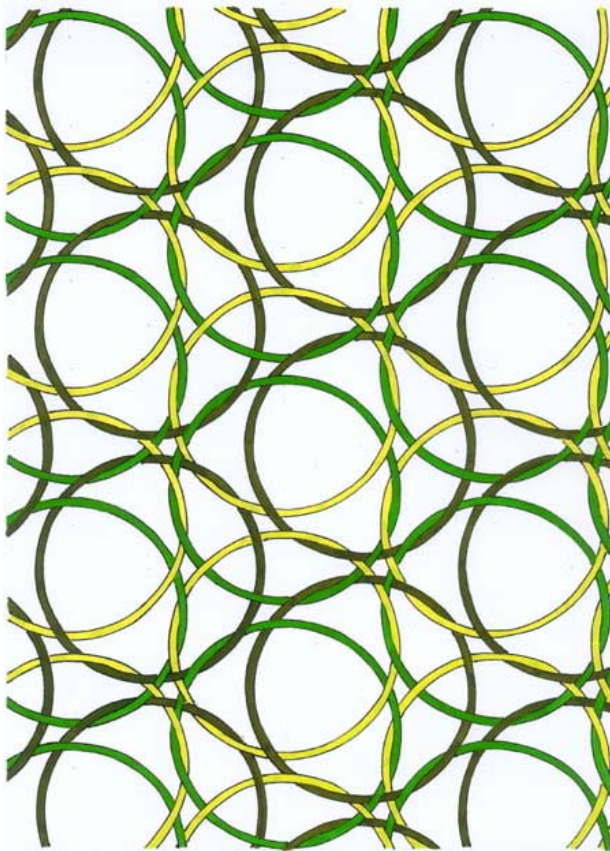




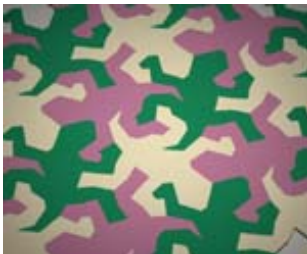








Transformation of M.C. Escher's periodic drawings - Index

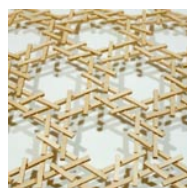
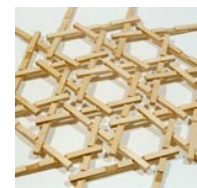
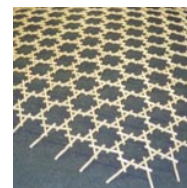
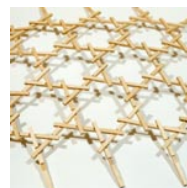
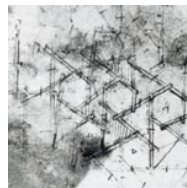
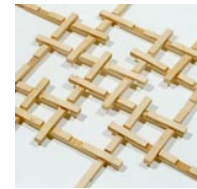
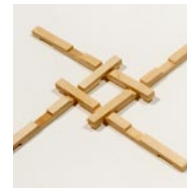
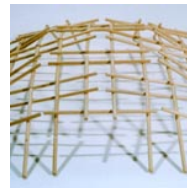
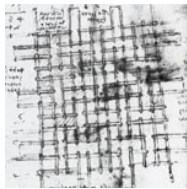




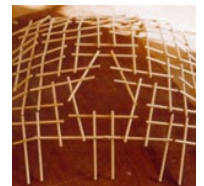
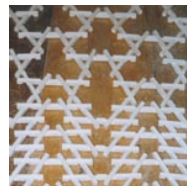
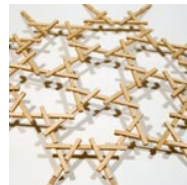
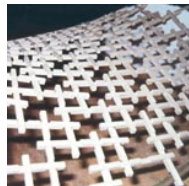
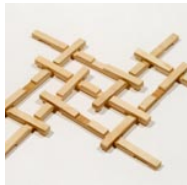


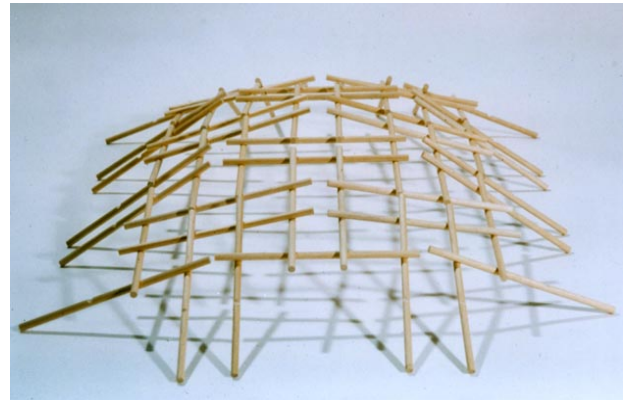
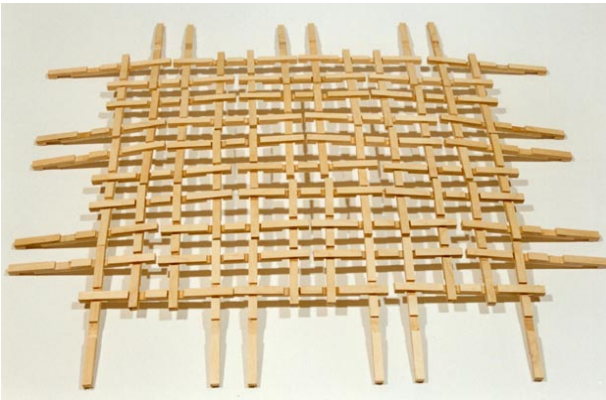
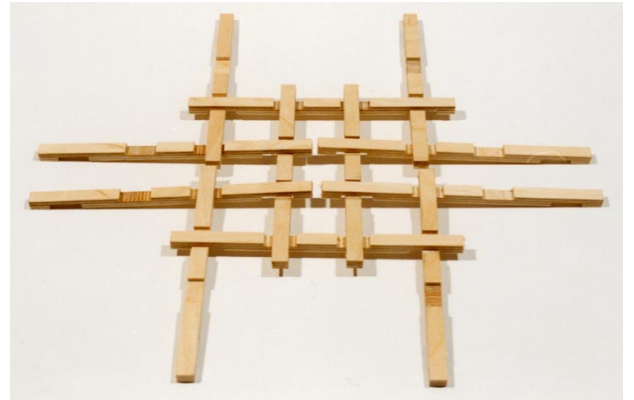
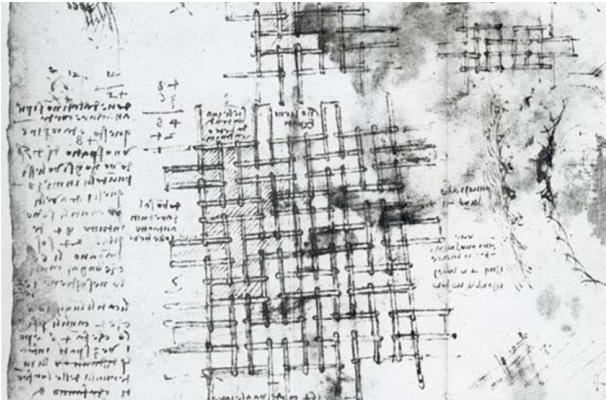


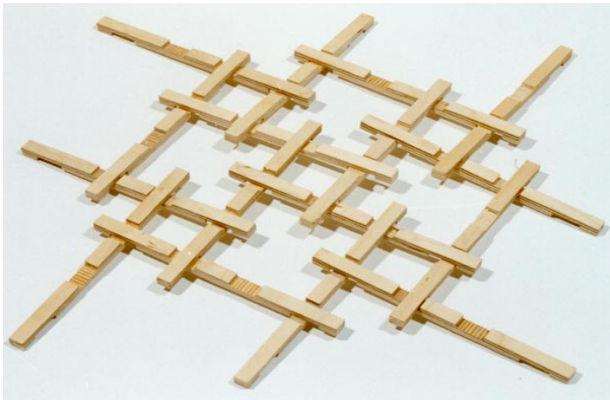
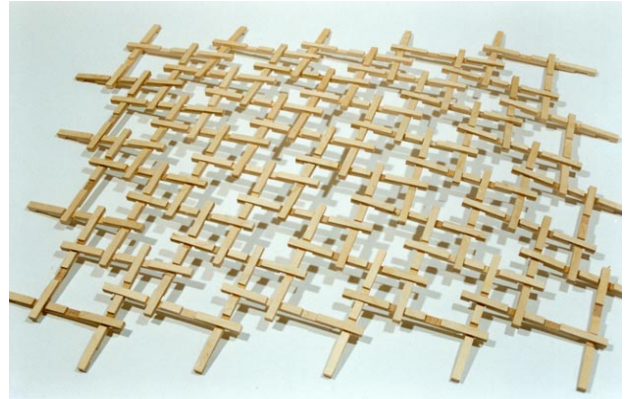
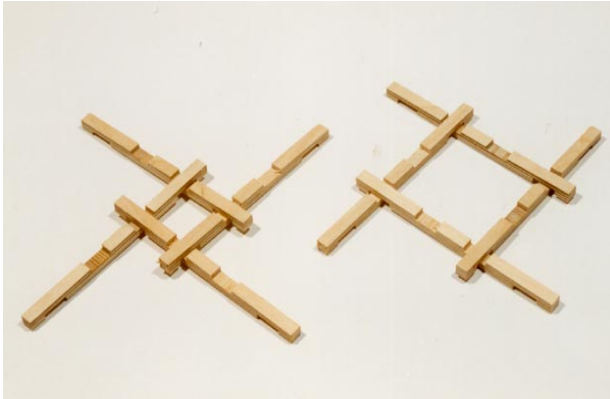
Bar grids, Leonardo da Vinci - Index 1

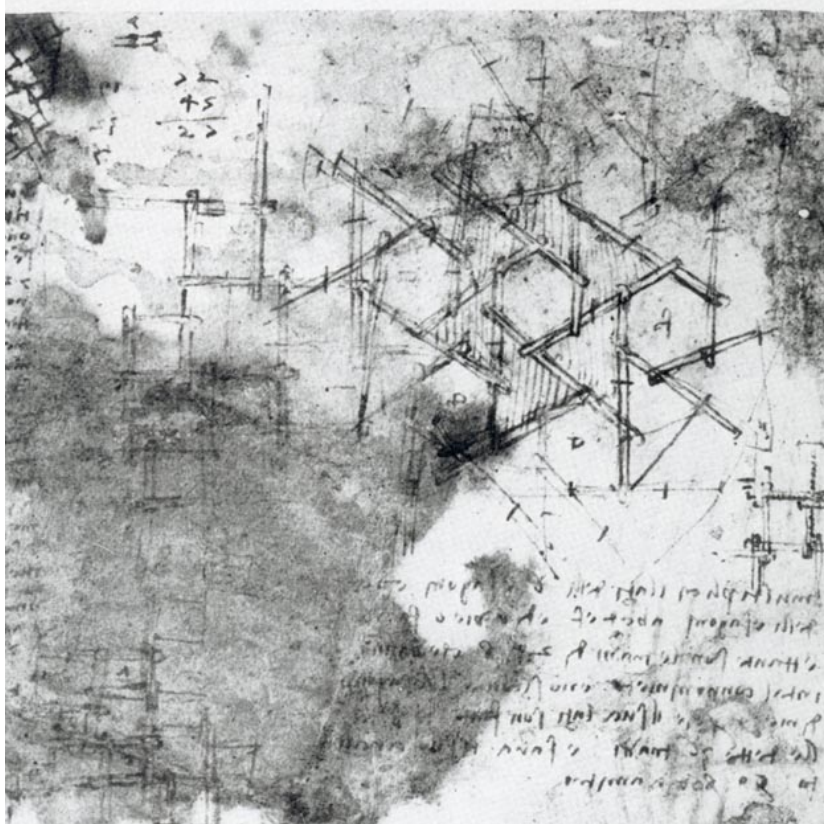


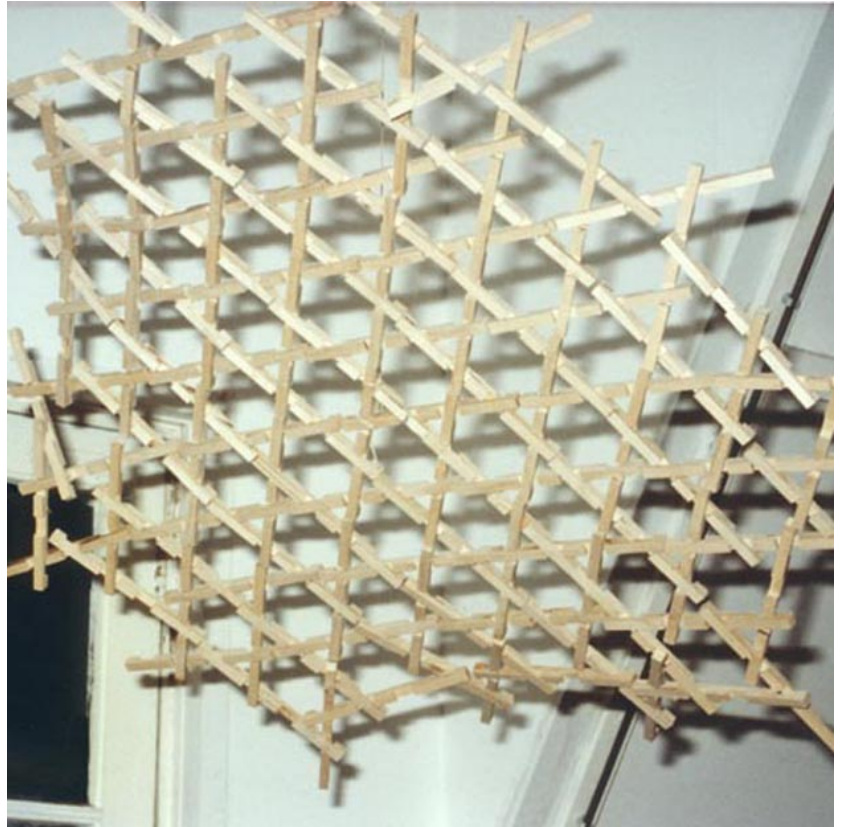
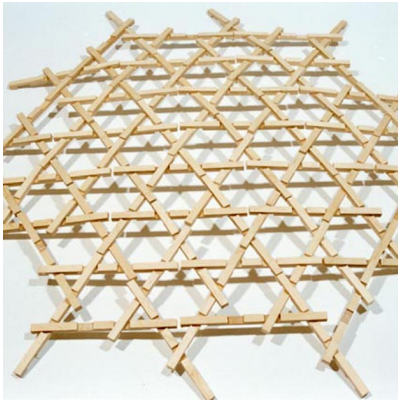
Bar grids, Leonardo da Vinci - Index 2

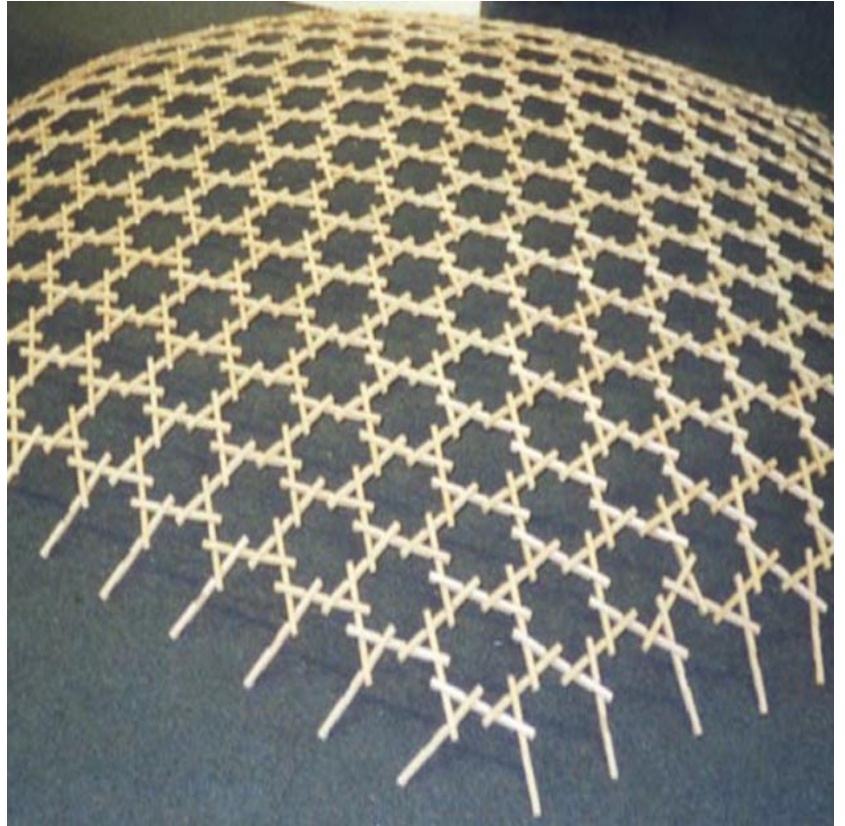
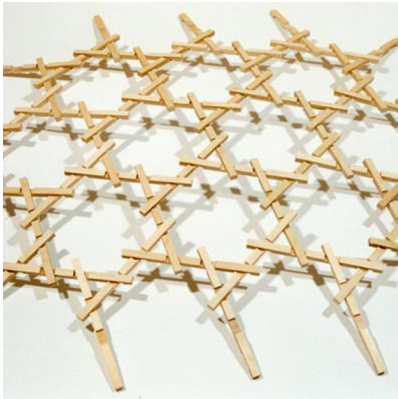


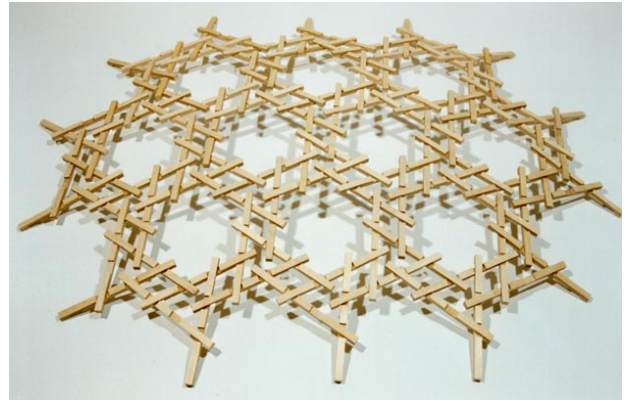
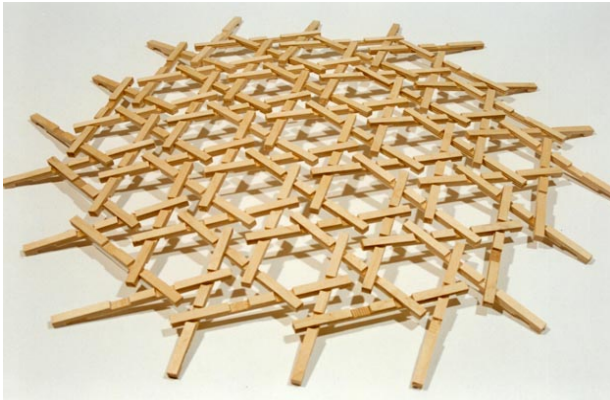
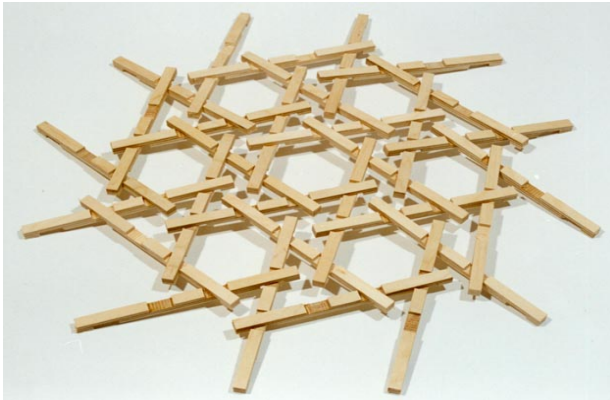


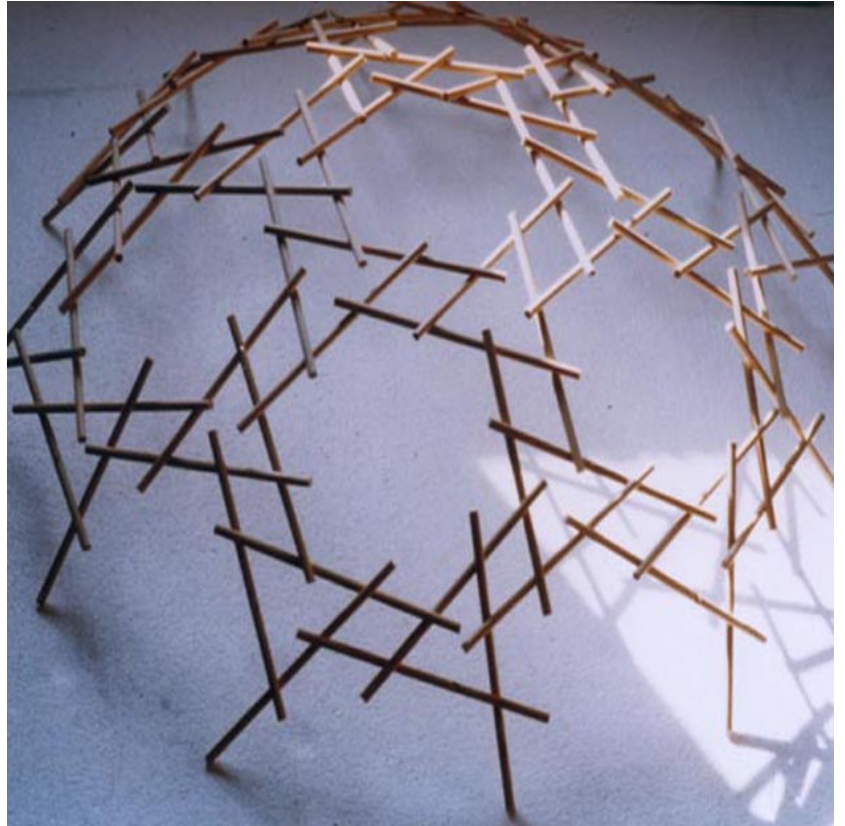
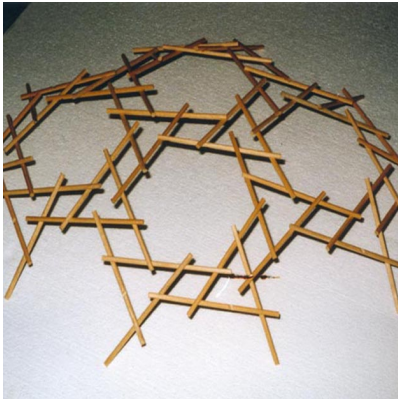
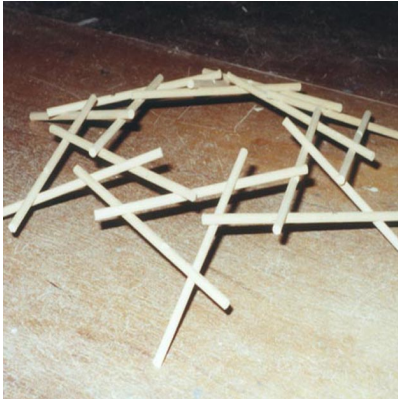


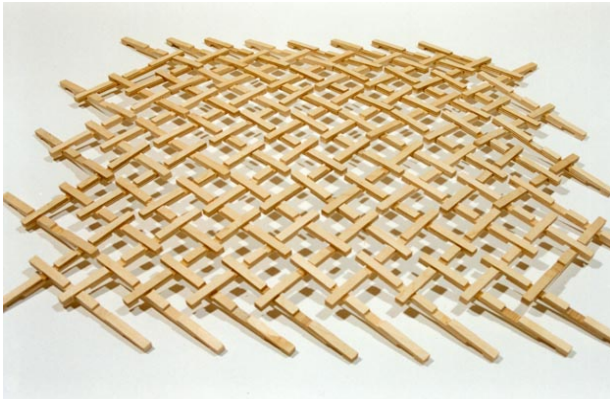
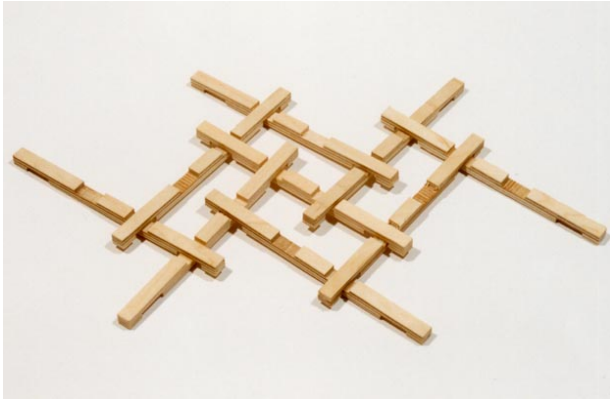


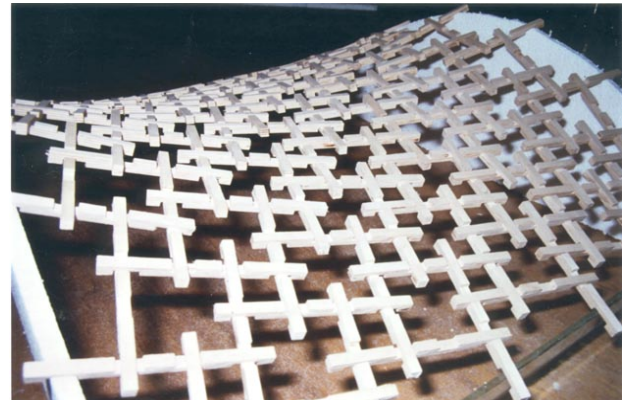
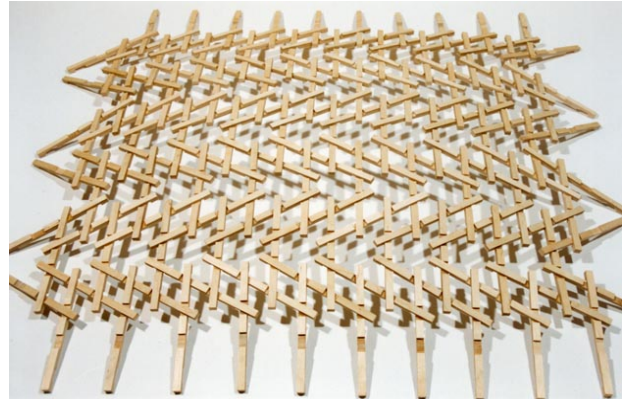


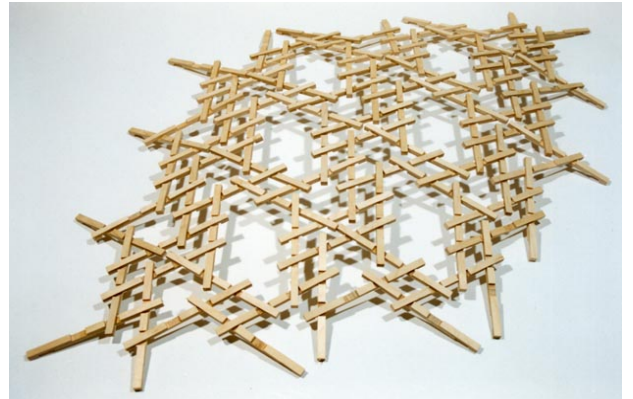
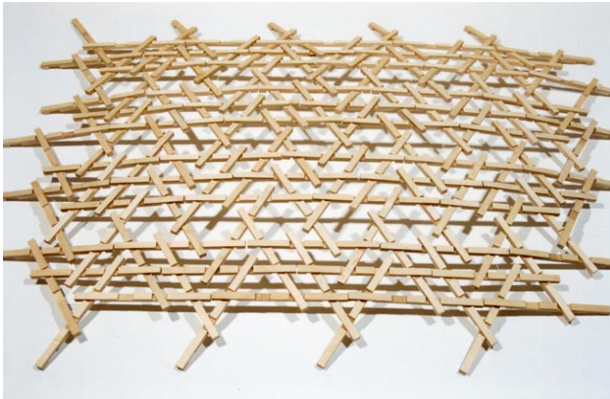


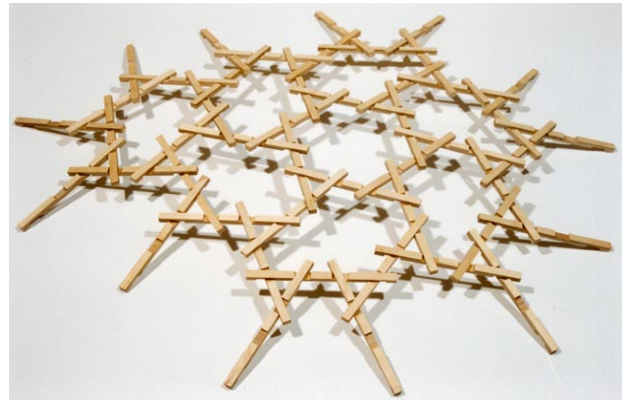
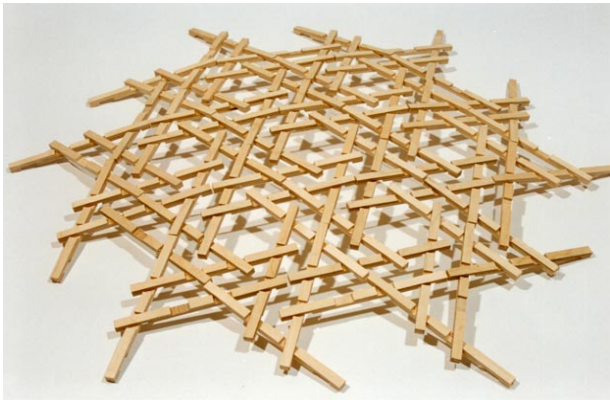
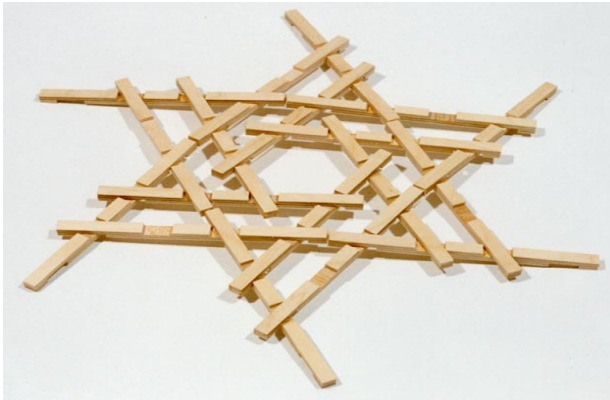


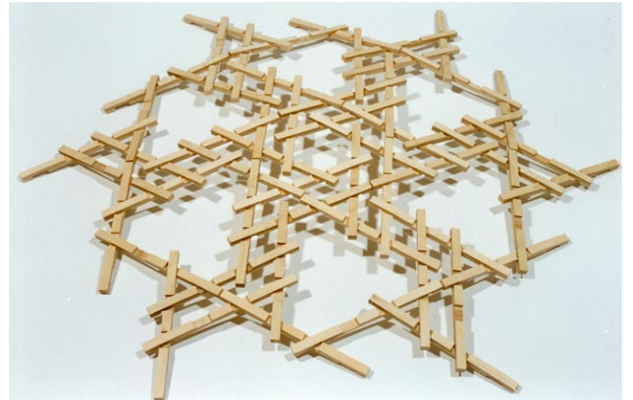
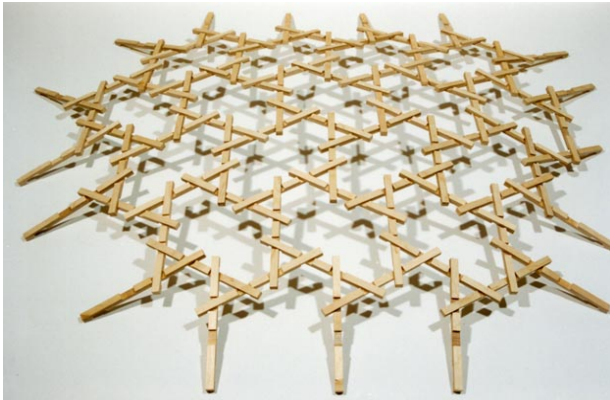
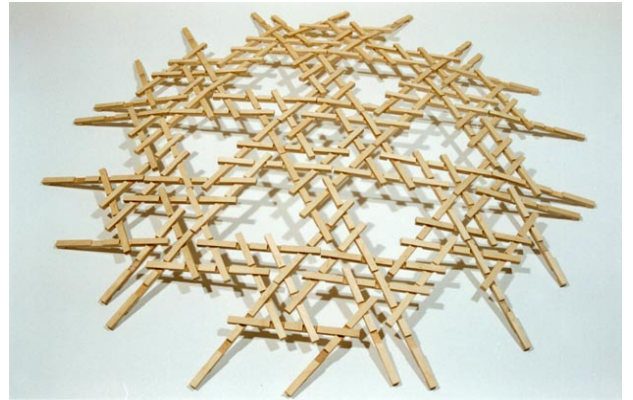
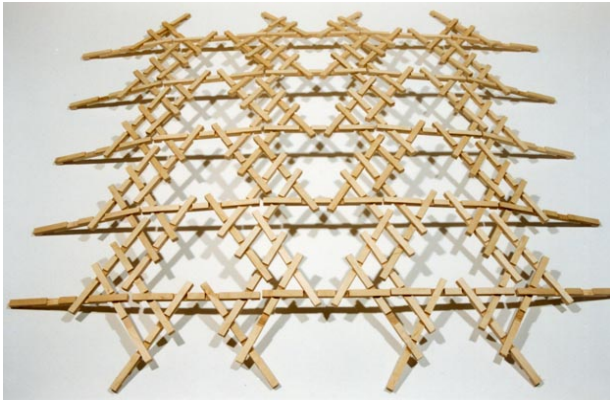


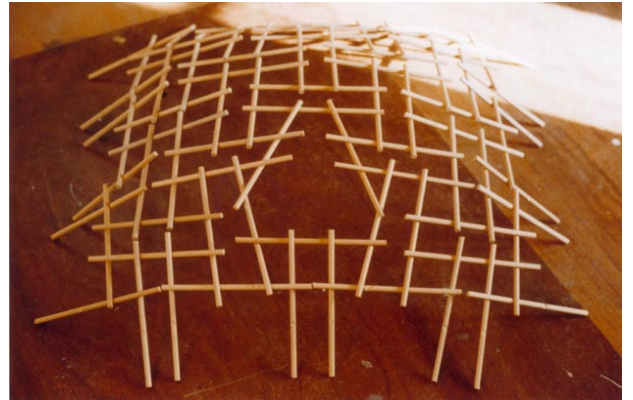
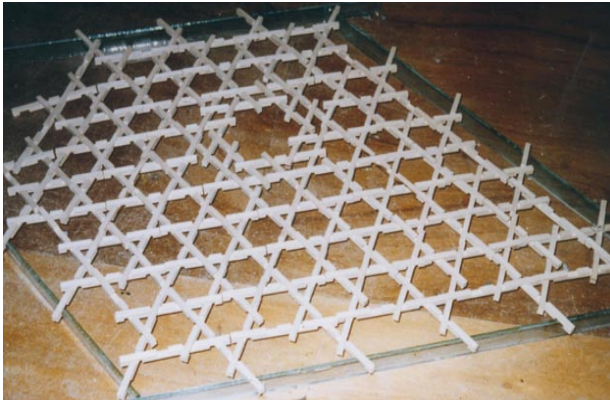
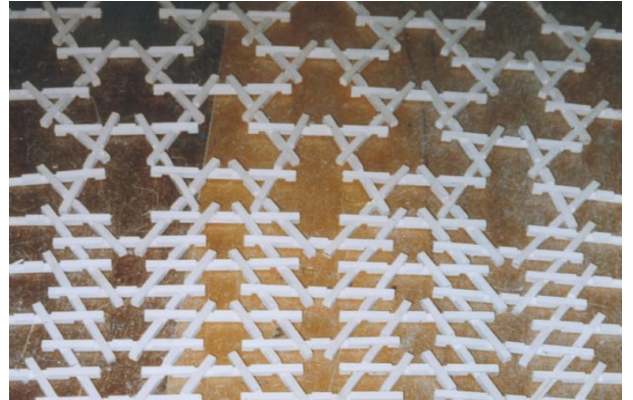
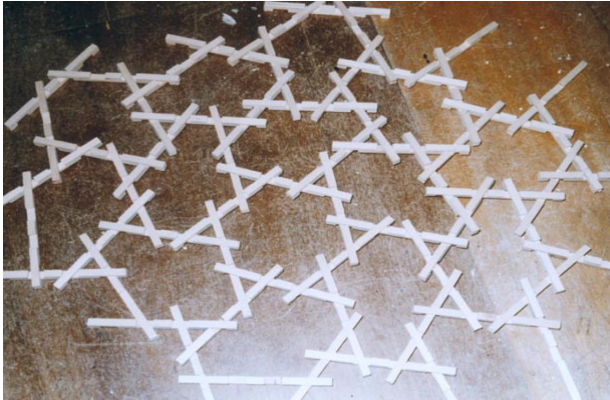




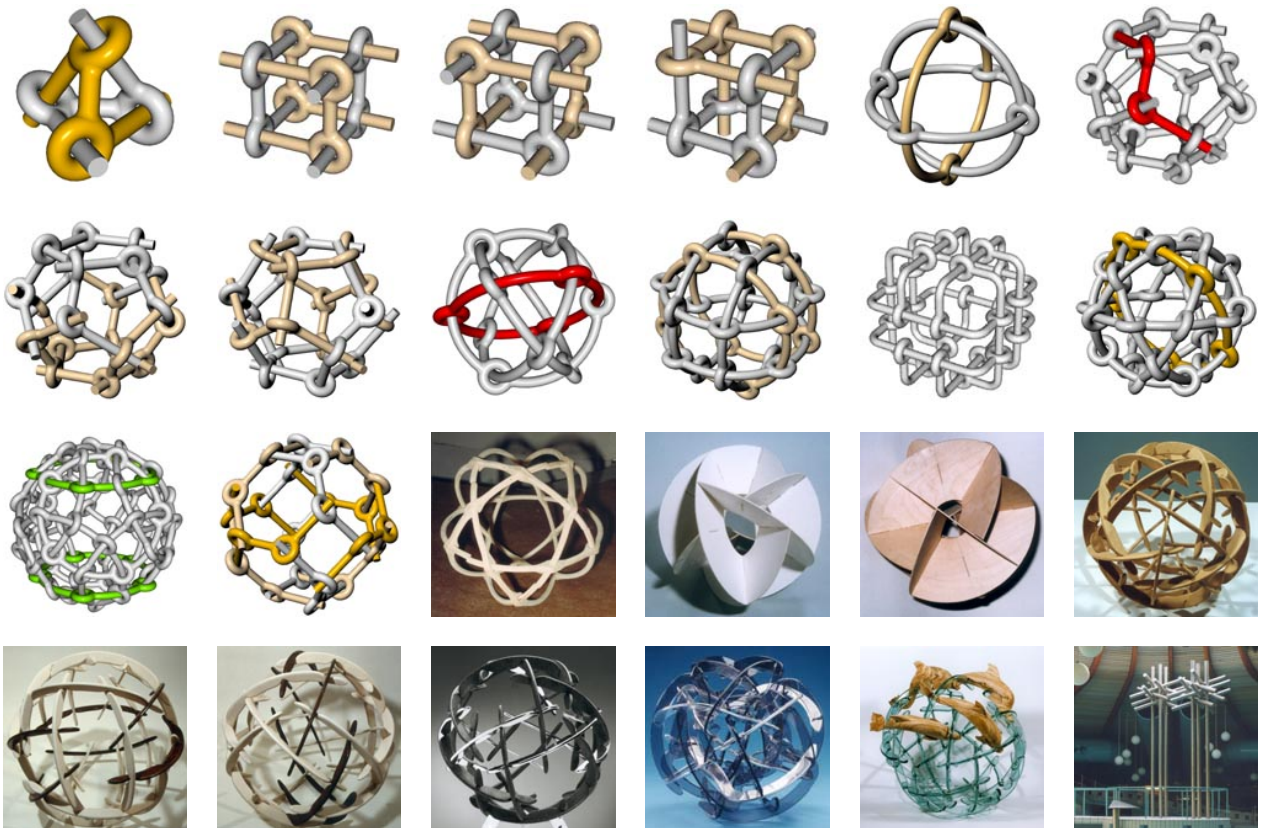


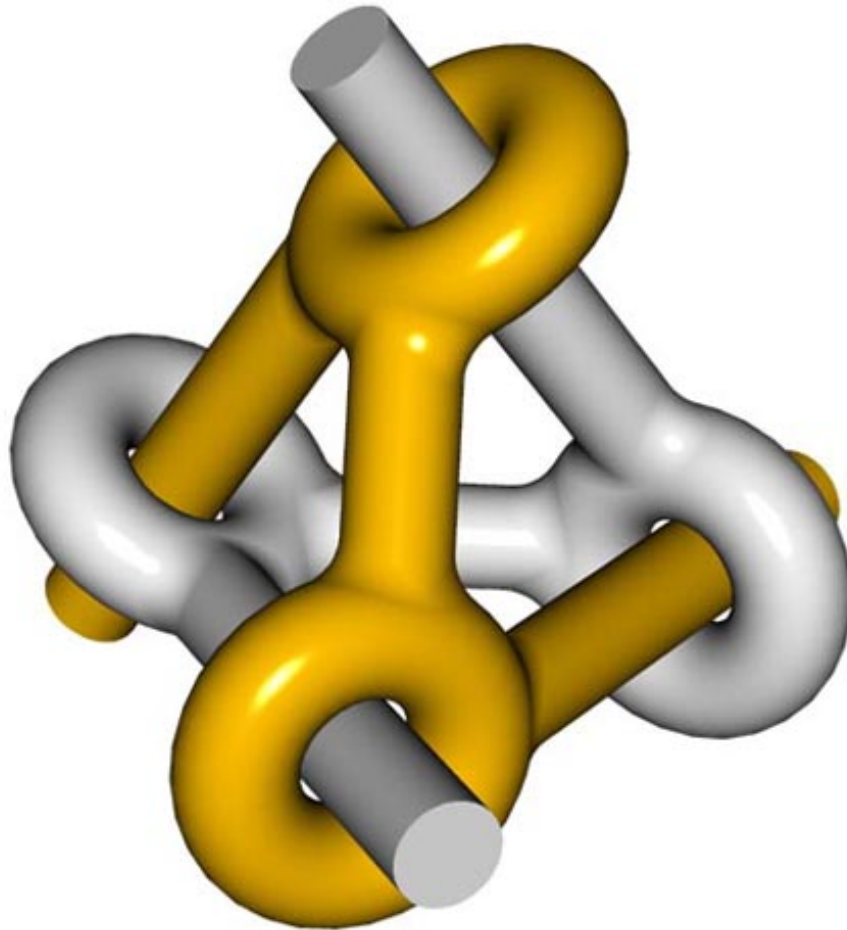


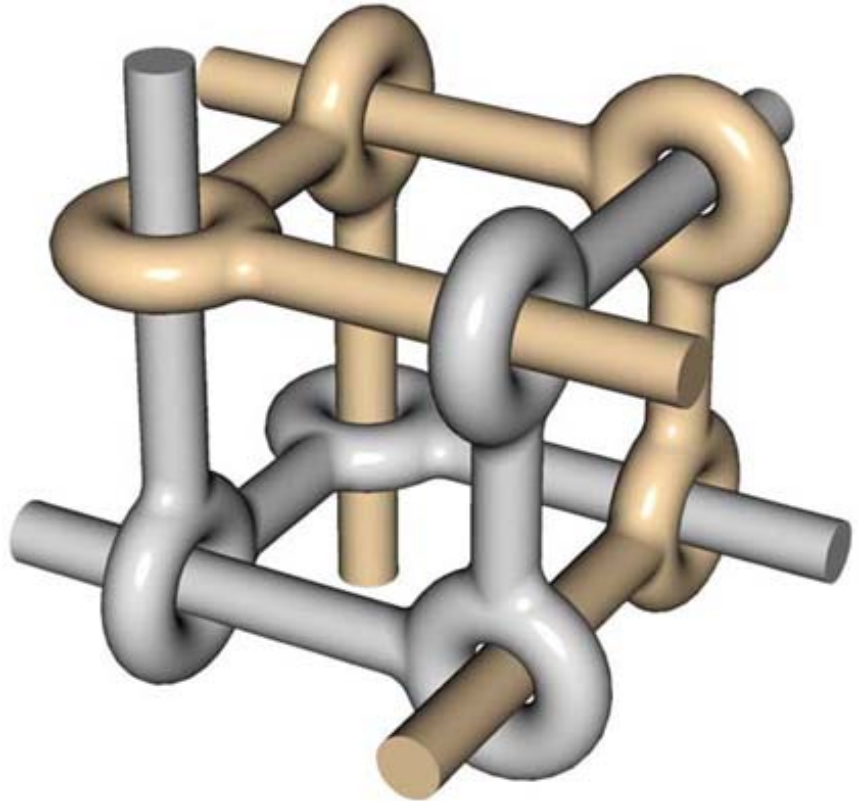
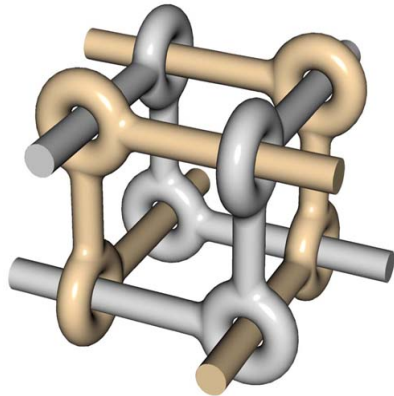
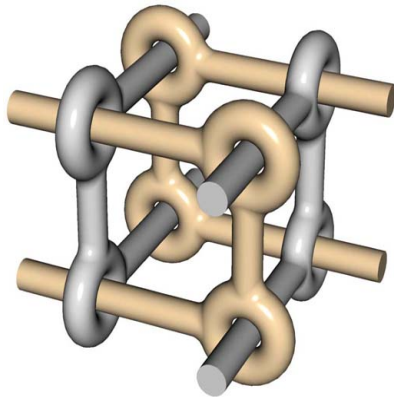


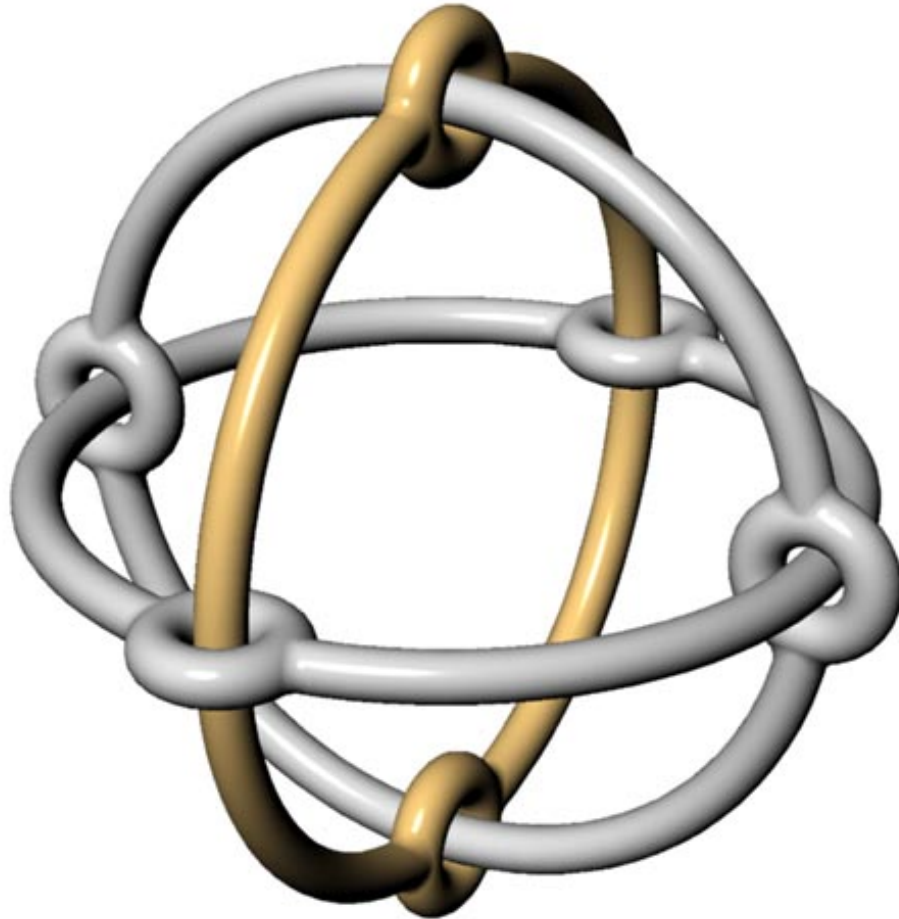


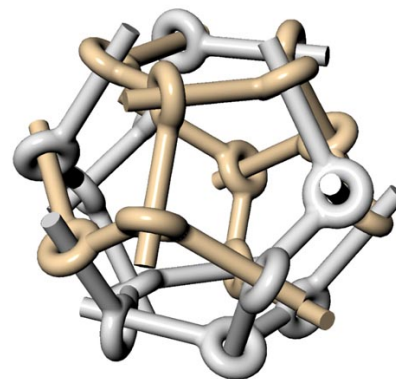
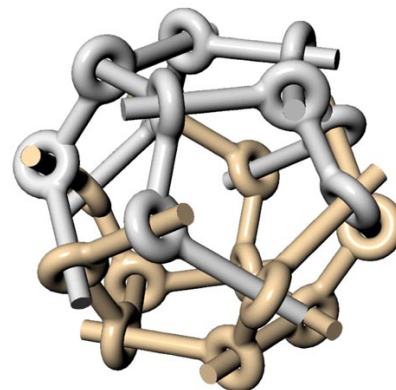
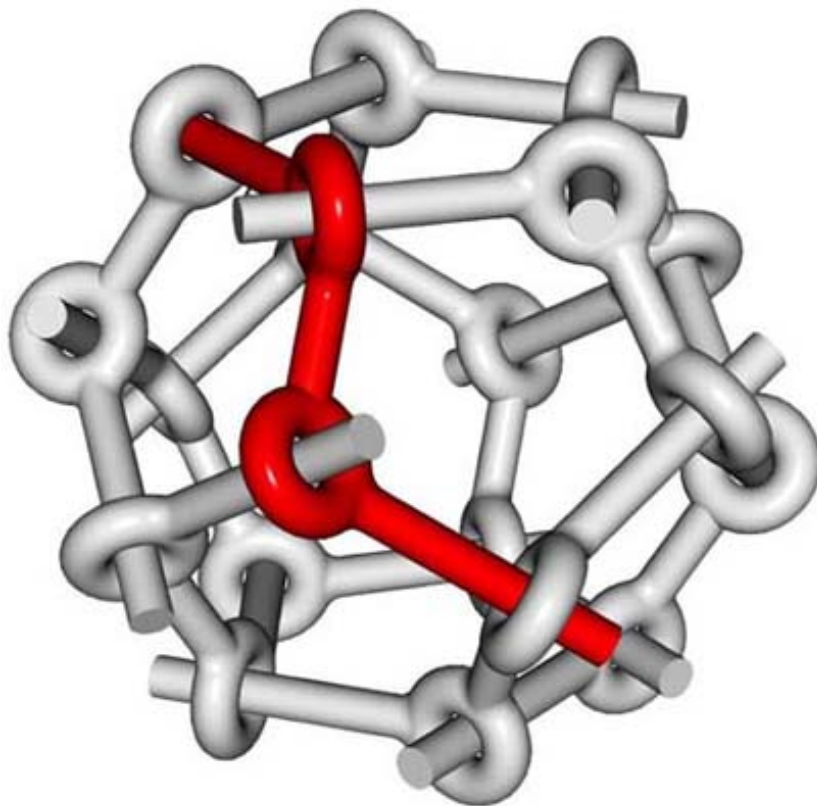
Bar grids, polyhedra - Index

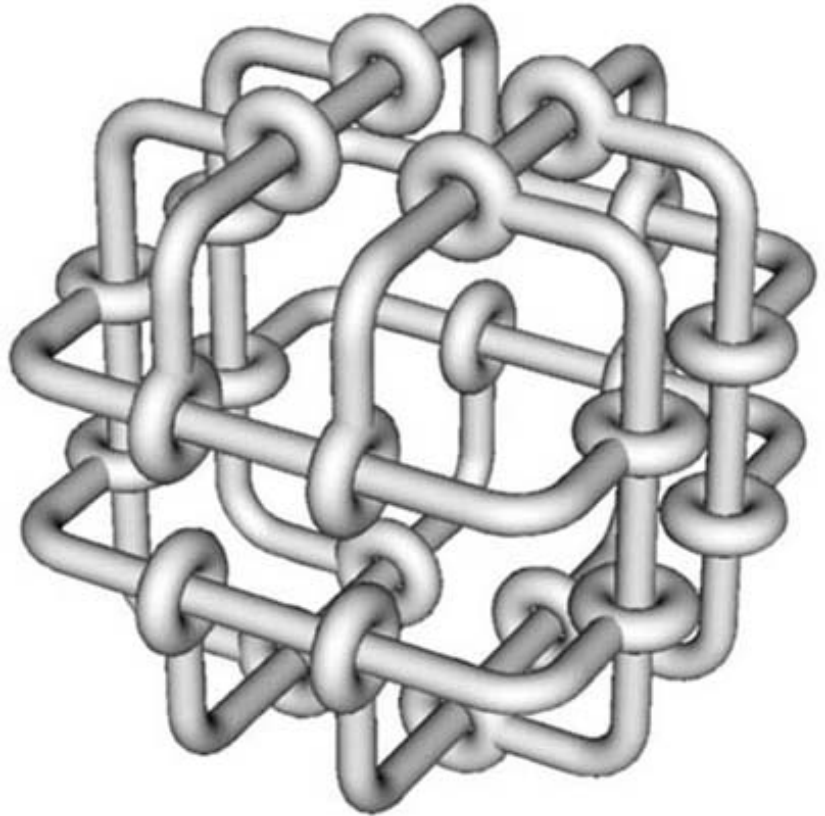
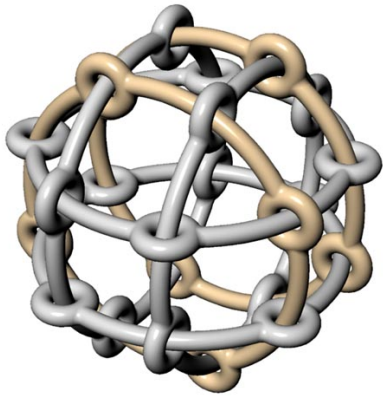
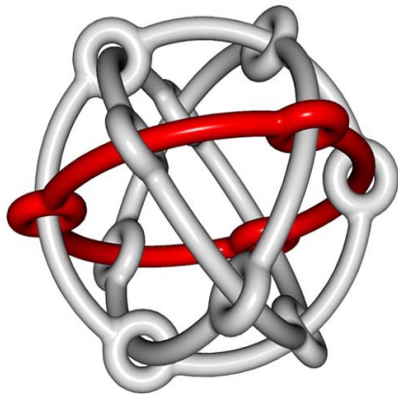


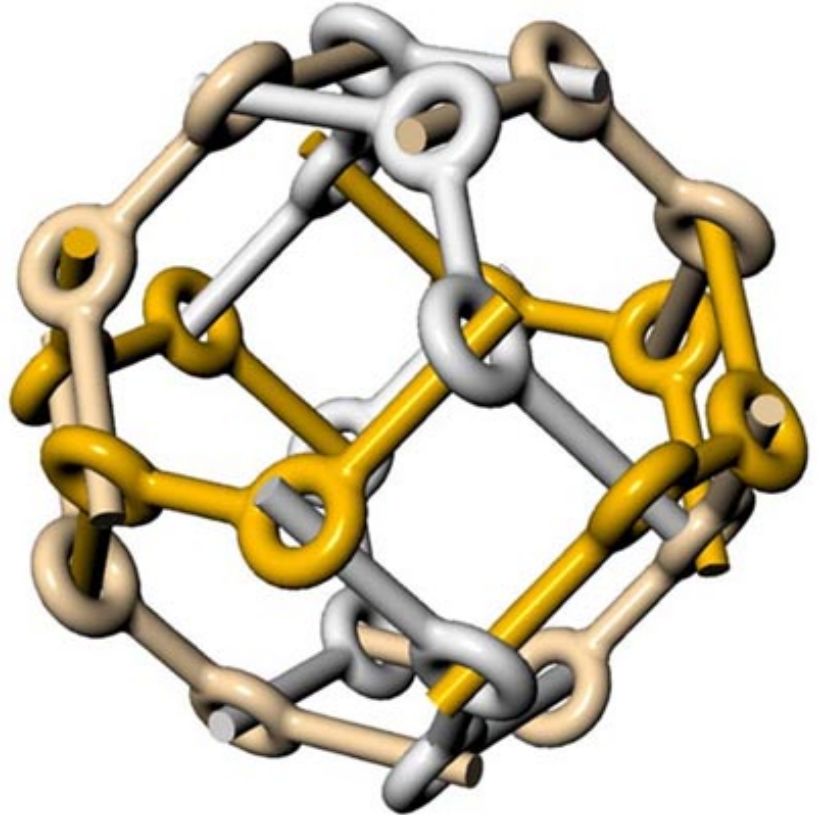
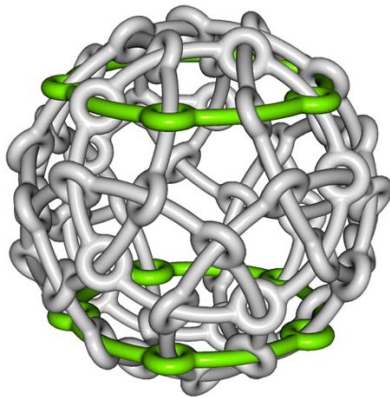
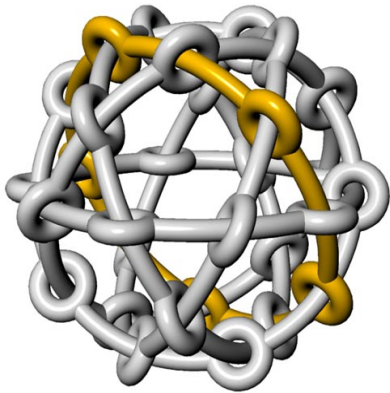


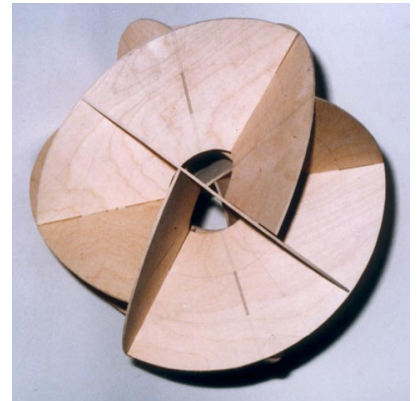
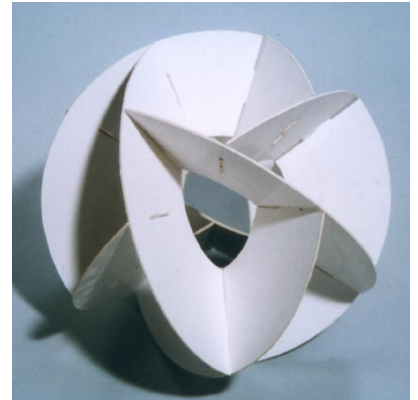
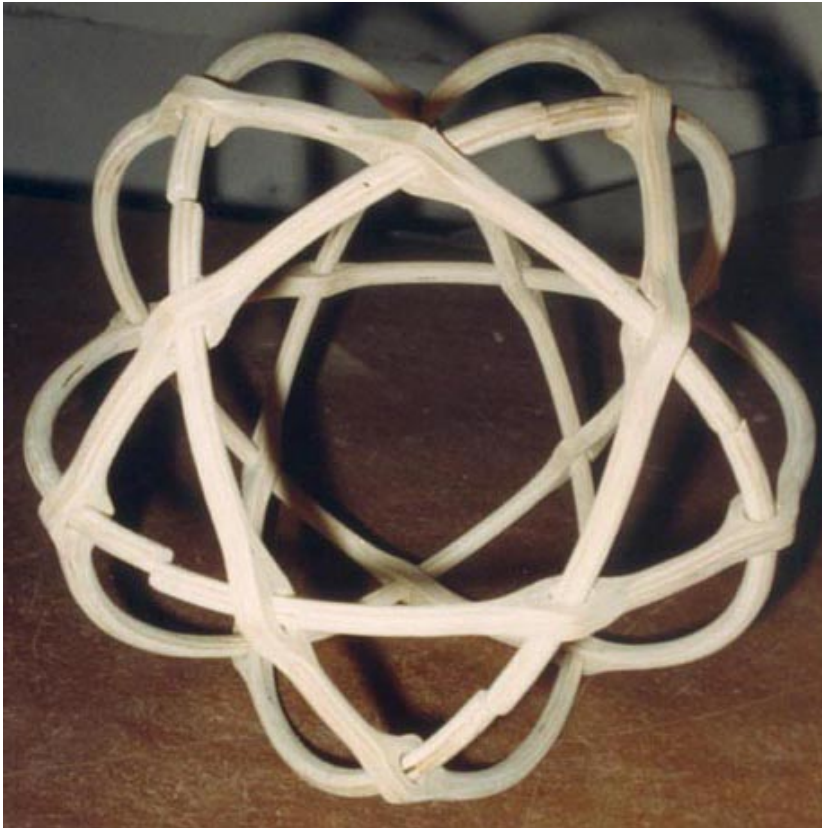


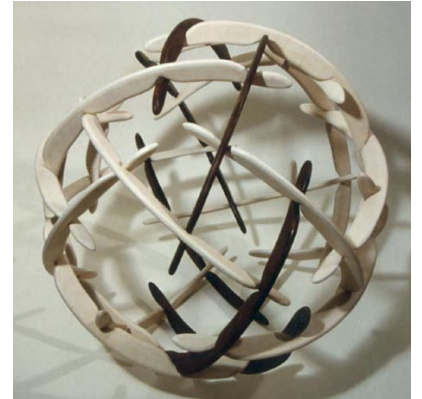




















Structures and sculptures - Index

