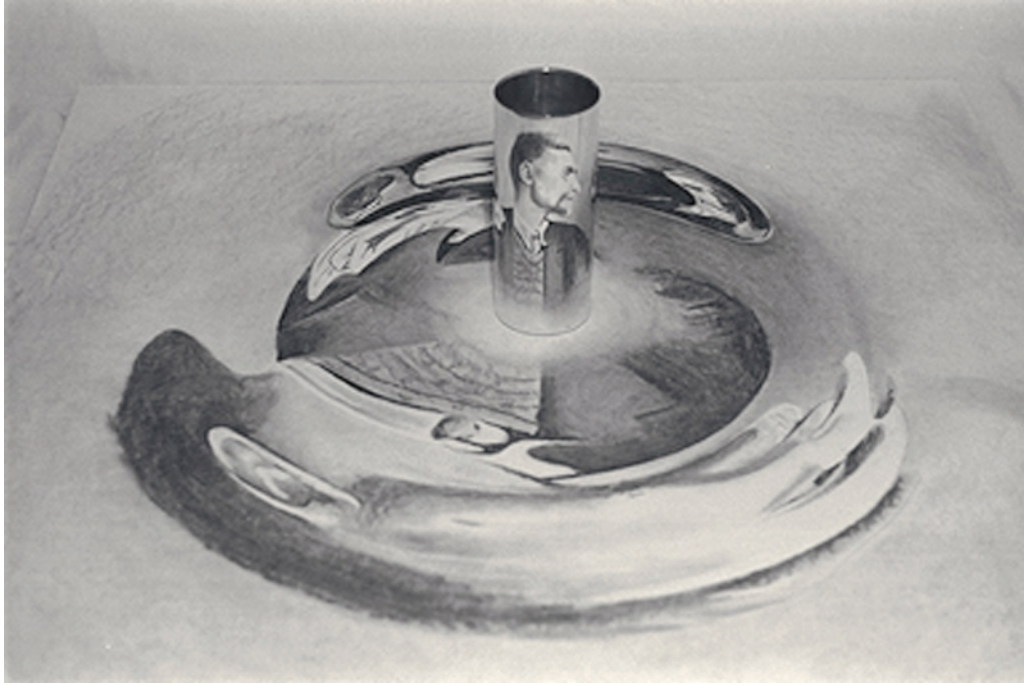


Kelly M. Houle



Click on the image above to view a movie of this Escher anamorphosis.
Several anamorphoses follow.



Escher II: Infinite Reflection, (view 1, Escher's profile),
cylindrical anamorphosis with mirror, charcoal on illustration
board, 40" x 40" x 12". © Kelly M. Houle, 1998
Collection M.C. Escher Foundation



Escher I: Double Reflection, cylindrical anamorphosis with mirror, charcoal on illustration board, 30" x 30" x 12".
© Kelly M. Houle. Collection M.C. Escher Foundation

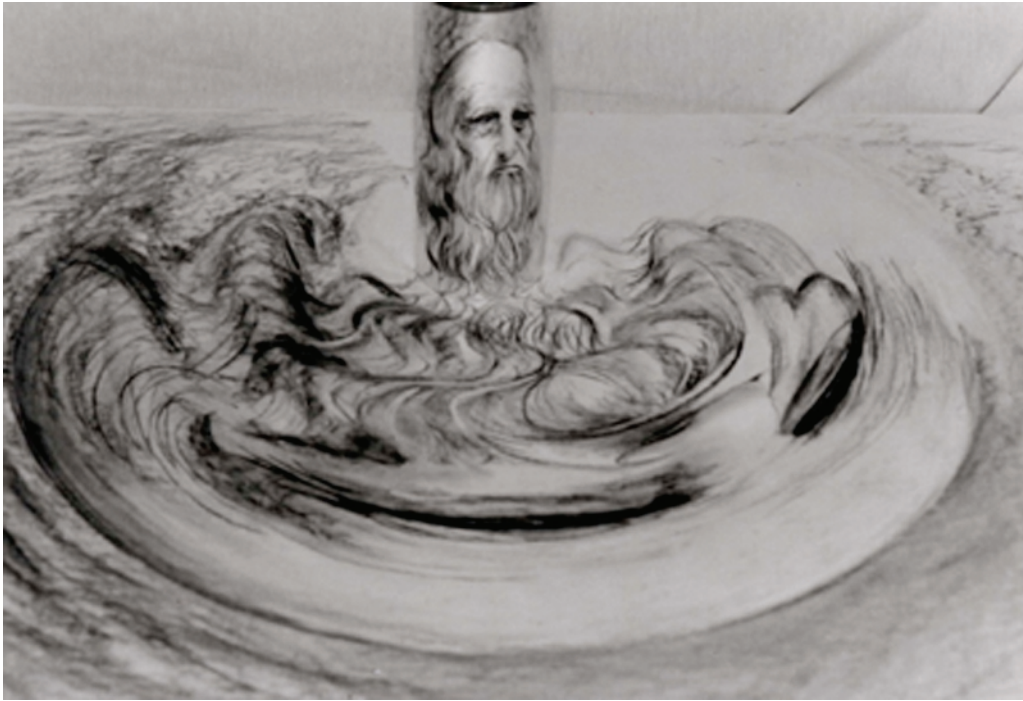


*Thy Art be a game of Lies** (after René Magritte's *The Betrayal of Images*), cylindrical anamorphosis with mirror, acrylic on masonite 24" x 36" x 12". © Kelly M. Houle, 2000.

*The title is an anagram of Magritte's original title *The Betrayal of Images*



Portrait of Lewis Carroll, cylindrical anamorphosis with mirror,
photo collage on illustration board, 40" x 40" x 12".
© Kelly M. Houle, 2000

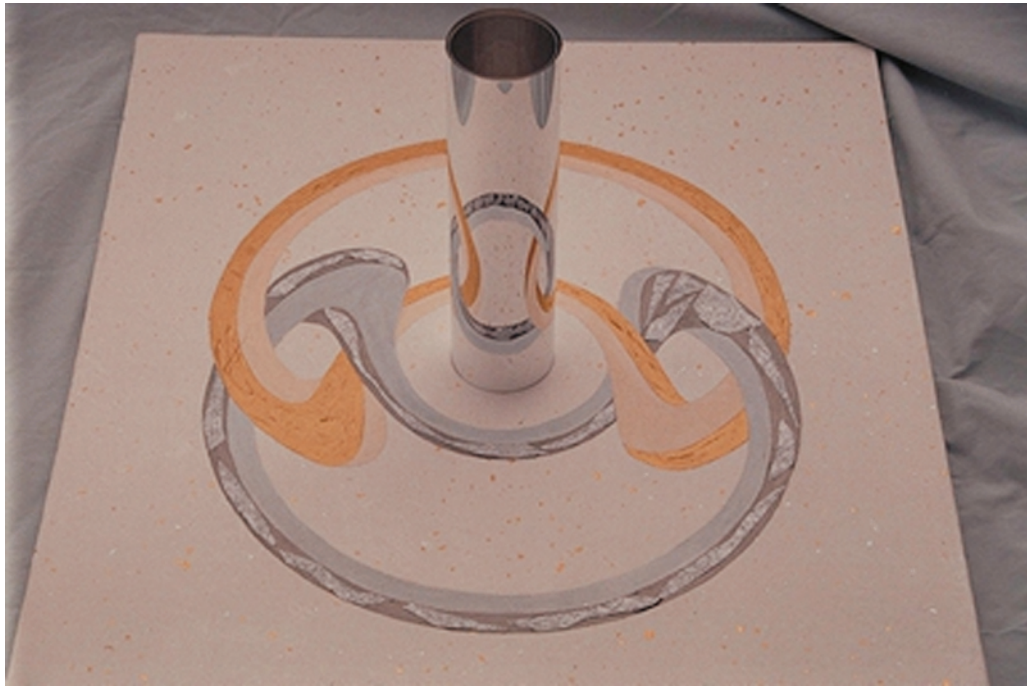


Portrait of Leonardo DaVinci, cylindrical anamorphosis with mirror, charcoal on illustration board, 40" x 40" x 12".

© Kelly M. Houle



Theme in Gold and Bronze (Two Interconnected, Impossible Tri-Bars), cylindrical anamorphosis with mirror, mixed media on masonite, 28" x 36" x 12".
© Kelly M. Houle, 1999



Theme in Gold and Silver (Two Interconnected, Impossible Rings), cylindrical anamorphosis with mirror, mixed media on masonite, 18" x 24" x 8". © Kelly M. Houle, 1999. Collection Hans de Rijk (Bruno Ernst)