

JOS DE MEY



Jos De Mey, born in 1928, studied at the Academy of Fine Arts in Ghent, Belgium, and began lecturing at that same academy on interior design and chromatics at the early age of 22. He made a name as a designer of furniture and taught for 20 years (from 1968) at the Municipal Institute for Architecture in Ghent. During that time, he became fascinated by impossible figures and began to paint them, placing them in realistic (almost photorealistic) settings. His painted constructions are elaborate, “built” with brick, stone, topiary, and other sturdy materials, sometimes placed in an environment with Flemish elements, and populated with figures appropriated from Bruegel, Magritte, Escher, and other well-known artists. Look for his signature owl in virtually every painting.



Curious Wagtail in a Strange Small Window. 1977



Escher's Thinker Observed by Magritte's Therapist. 1997



**Escher-ball and -knot with Magritte-man
in a Constructed Landscape by J.d.M. 1996**



Where Are They Going? 1996



The Painter's Waiting Room. 1996



Strange Panopticum-construction for Parrots and Family. 1987



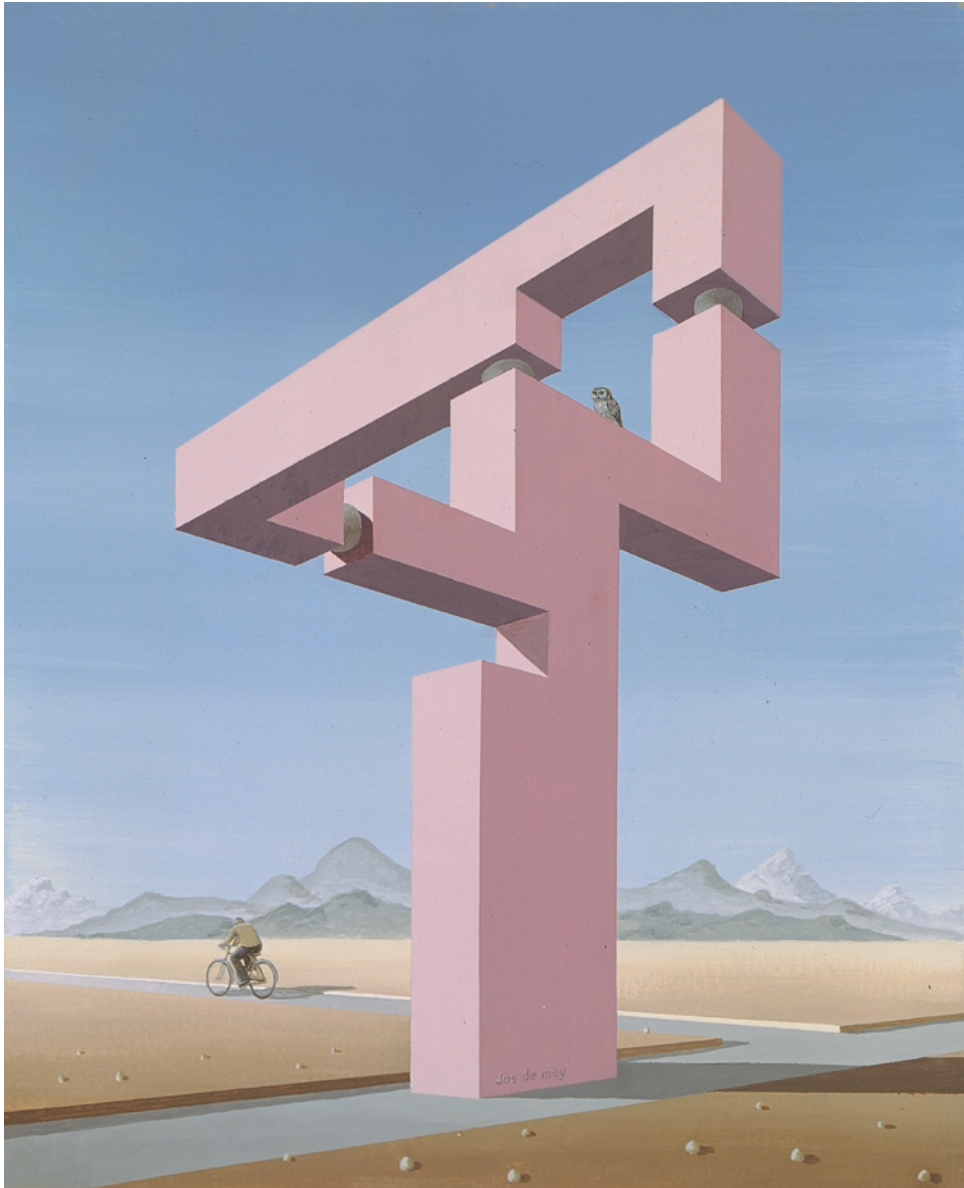
**Meeting of Jos de Mey's Owl with the Stone of the Wise Dürer.
1997**



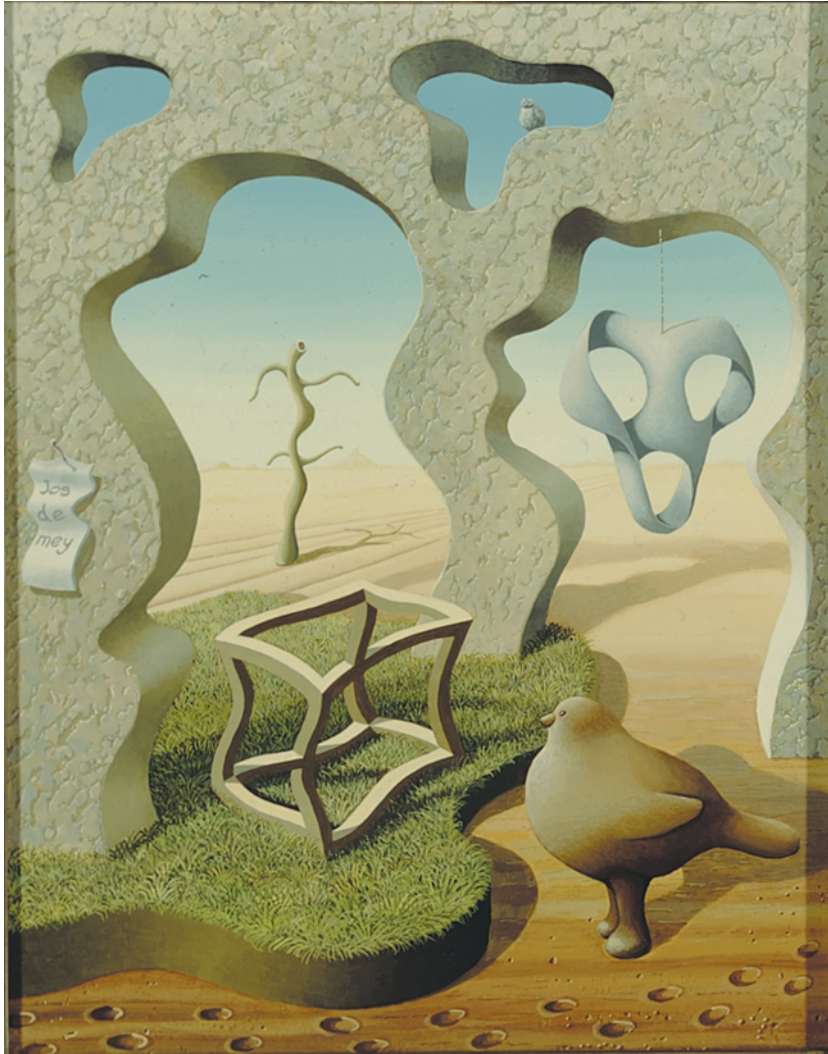
Fantastic Construction in the Great Desert. 1997



With the Tardy Compliments of Monsieur Le Nôtre. 1983



**Rose Monument in a Vast Landscape with a Solitary Cyclist.
1997**



**Botézo-bird Admiring a Soft Construction of J.d.M.
1996**



**Just As the Rooster on this Tower Crows, he Crows Nowhere...
1987**