

Server-Based Setup

Easier customization and setup for multiple computers

For network administrators, Windows 95 includes a setup program that automates installation and provides easy customization when installing Windows 95 from source files on the network.

Server-Based Setup

This setup program automatically copies Windows 95 files to the selected server path, so that Windows 95 can be installed on individual computers directly from the network without accessing disk or CD-ROM drives.

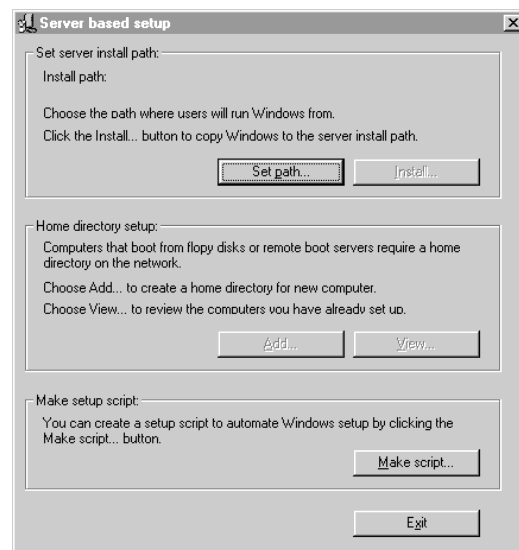
Administrators can manually adjust the source files on the shared directory, adding or removing files as necessary to specify those to be copied for local computer setup.

Home Directories

During Server-Based Setup, administrators can view or add home directories on the server for particular computers on the server. This enables administrators to configure and store the user-specific or computer-specific information in these directories for use in installing Windows 95 in custom configurations.

Remoteboot Installations

For greater network security and manageability, Windows 95 can be set up to run from the server, either partially or completely (as in the case of remotebooting (RIPL) from a ROM card).



For more information, see Chapter 4, “Server-Based Setup for Windows 95,” and Chapter 5, “Custom, Automated, and Push Installations.”

Custom Setup Batch Scripts

Automate the installation process

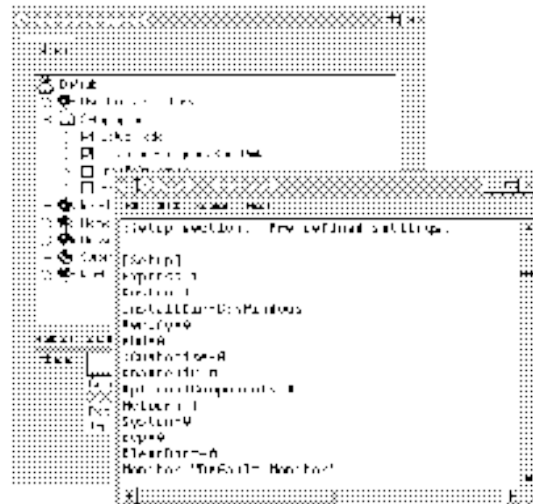
Windows 95 supports scripting of the installation process so that predetermined settings and responses to setup prompts can be automatically read from a single file, significantly reducing the installation time.

Graphical Script Creation

Server-Based Setup has an option for creating batch scripts. By choosing this option, the administrator can easily create scripts by clicking check boxes and typing in text strings as prompted by the program. There's no need to edit a text file for the correct syntax of every option.

Support for Systems Management Server

With Microsoft Systems Management Server commands and a Windows 95 batch script, administrators can install Windows 95 on a computer without having to physically visit the site. As soon as the user logs onto the network, the installation runs by itself.



For more information, see Chapter 5, "Custom, Automated, and Push Installations," Appendix D, "MSBATCH.INF Parameters," and Appendix K, "Microsoft Systems Management Server."

Tips for the administrator

- Although Server-Based Setup automates the copying of files to the server, you may want to customize the shared directory, by adding or removing files that are specific to your network.

Tips for the administrator

- Define a default computer configuration and test setup from a batch script file in the lab—to ensure that the batch script file installs all of the software correctly—before rolling it out to the network.
- To automate the user and computer name entries in the script file, either copy them from your current server or create a text file with the predefined names.

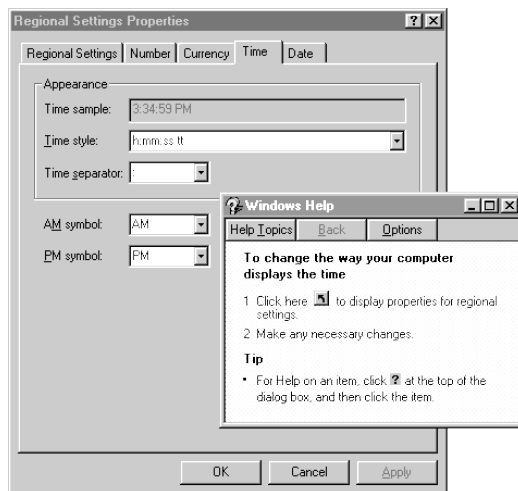
New Tutorial and Help

Easy to learn and use

Windows 95 includes new task-based Help and a tutorial that assists users in getting up to speed.

Online Help

Windows 95 Help is designed to make it easier for users to get the information they need to perform a specific task. Most procedures have moved out of documentation and into online Help, where they're easier to access while you're working.



Also, Help is streamlined and task-oriented, so it is easier to remember and to use.

Whenever a user wants Help for a task, a Help window appears alongside the window where the task is running, or if no task is running, Help provides a single-click shortcut to the dialog box or feature that brings up the task immediately.

New Tutorial

Windows 95 also introduces a new tutorial that makes it easier for users to get “up and running” on common tasks. Its graphical approach illustrates the steps for tasks such as opening files using the Start button. In addition, to help with migration, the Introducing Windows Tutorial includes tips and examples of common Windows 3.1 tasks as they are now performed under Windows 95.



For more information, click Help on the Start menu.

Context Help

To get specific help information in a dialog box, right-click an item, and then click the What Is This? button. Or click the Help button in the title bar, and then click the item in the dialog box that you want to read about.

- To speed up user training in Windows 95, use system policies to modify the computer's startup so that the Tutorial runs in full-screen mode in the Startup group. After training is complete, change the system policies to remove the Tutorial from the startup.

Tips for the administrator
