

# Cruise-A-Way Private Help

[Introduction](#)

[Installation of Cruise-A-Way Private](#)

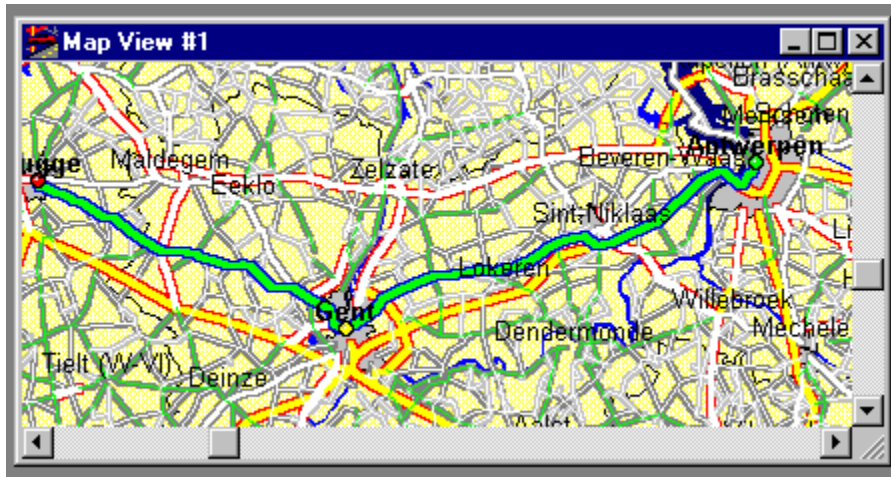
[On line support](#)

[Working with Cruise-A-Way Private](#)

[Software licence agreement](#)

[Distributors](#)

## Introduction



Cruise-A-Way Private is a program which calculates the best route to be taken for a specific journey by car. Simply by specifying the departure point, the destination and any desired stopovers to be made en route, an optimal route is quickly calculated and the results displayed on the screen in map or tabular format. It is also possible to customise the maps to suit the user, and to make printouts of the output.

The use of icons make the program simple to use.

Cruise-A-Way Private makes calculating routes using maps and distance charts unnecessary, and can save a lot of time and effort as well as improving on the results.

[Working with Cruise-A-Way Private](#)

# **Installation of Cruise-A-Way Private**

[Requirements](#)

[Installation for Windows 95](#)

[Installation for Windows 3.1](#)

[Registration](#)

[Working with Cruise-A-Way Private](#)

## **On line support**

If you encounter any problems in using this program, and are unable to solve these by using the help file, on line support is available.

Contact :

DigiMap N.V., Mechelsesteenweg 301, 2830 Willebroek  
telephone (32)3 860 92 92 (for Belgium)  
Compuserve : 101737,1162  
Internet : vierbergen.support@glo.be

DigiMap B.V., Vlietweg 17, 2266 KA Leidschendam  
telephone (31)70 320 84 64 (for The Netherlands)

## Working with Cruise-A-Way Private

You may choose to work with the program using either the menu header or the icons in the toolbar. Using the icons is simpler, but for some functions (eg, map scale) it may be necessary to use the menu header. Also very handy is to click on the right button of the mouse when the cursor is above the map. Then you get the most frequently used items.

[Starting up Cruise-A-Way Private](#)

[The layout of the screen](#)

[Description of the Icons in the Toolbar](#)

[The menu header](#)

[Searching for a place](#)

[Selecting a journey](#)

[Legend](#)

## Starting up Cruise-A-Way Private

The software must be [installed](#).

When this has been done, if necessary, open the program group of Cruise-A-Way Private . Double click on the Cruise-A-Way Private icon. The main screen of Cruise-A-Way Private will then appear. It will now be ready to start using the program.

[Working with the program](#)

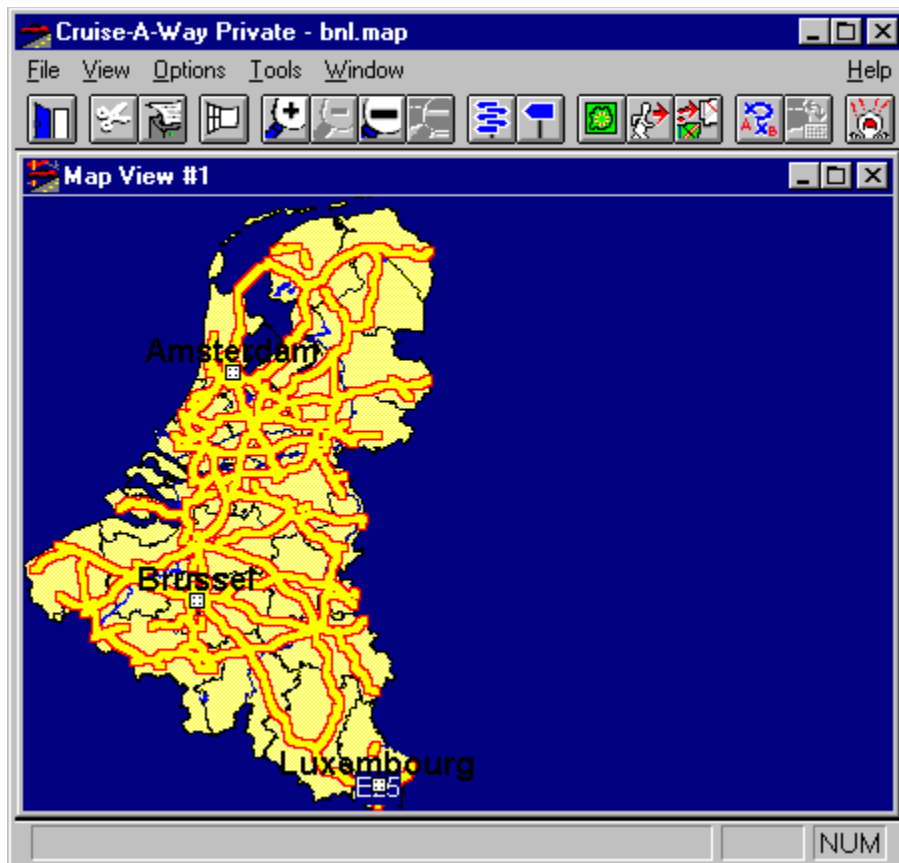
## The layout of the screen

After Cruise-A-Way Private has been started up the following will appear on the screen:-

[the menu header](#)

[the toolbar with several icons](#)

the main screen which will just contain a window with a default map  
the status line



[Working with Cruise-A-Way Private](#)

## Description of the Icons in the Toolbar



Cruise-A-Way Private makes use of icons in the toolbar which make it easy to use the program. Some selections involve dialogue boxes which appear and require you to select from various options. Click on the {OK} button in the window with the mouse to confirm your selection. You may obtain a description of the icons by clicking on the relevant icon in the toolbar displayed above.




[Working with Cruise-A-Way Private](#)

[The layout of the screen](#)



## Route description

Clicking on this icon or selecting the option from the menu header gives a detailed description of the optimal route calculated for your journey in tabular form. The information given is the start and end point of each segment of the route, the road used, and the distance in kilometers between the two points.

Route View #1		
<b>Shortest route</b>		
<b>From: Antwerpen (B-2000)</b>		
<b>To: Willebroek</b>		
<b>Distance: 20.0 km</b>		
<b>Duration: 00h 16m</b>		
	Antwerpen (B-2000) N1 - Frankrijklei	1.1 km - 00h 01m
	Mechelse Steenweg - N1	1.1 km - 00h 01m
	Antwerpen-7 (B-2018) Kon Elisabethlei	0.5 km - 00m 45s
	J Van Rijswijckln	1.0 km - 00h 01m
	Antwerpen-Zuid N177	1.1 km - 00h 01m
	Den-brand - Antwerpen-2 (B-2020) A12	14.3 km - 00h 08m
	Willebroek (A12-N16) N16	0.5 km - 00m 15s
		0.4 km - 00m 48s
	Willebroek 	

[Legend](#)

[Working with Cruise-A-Way Private](#)

[The menu header](#)

[Description of the Icons in the Toolbar](#)

## Drawing Options



By clicking on the above icon, or by going to options in the menu header and selecting Drawing Options you may customize the design of the maps (eg. change the colours of motorways or rivers, type of text used, and so on.) The dialogue box below will appear in which you may make relevant selections from the options available. To select default values you will need to use the menu header.

You can save and load your drawing options through the menu command <Load> and <Save>. If you want to use the default options, click on <Default> in the options menu.

[Drawing options for regions](#)

[Drawing options for roads](#)

[Drawing options for points](#)

[Working with Cruise-A-Way Private](#)

[Description of the Icons in the Toolbar](#)

[The menu header](#)

## Selecting a journey

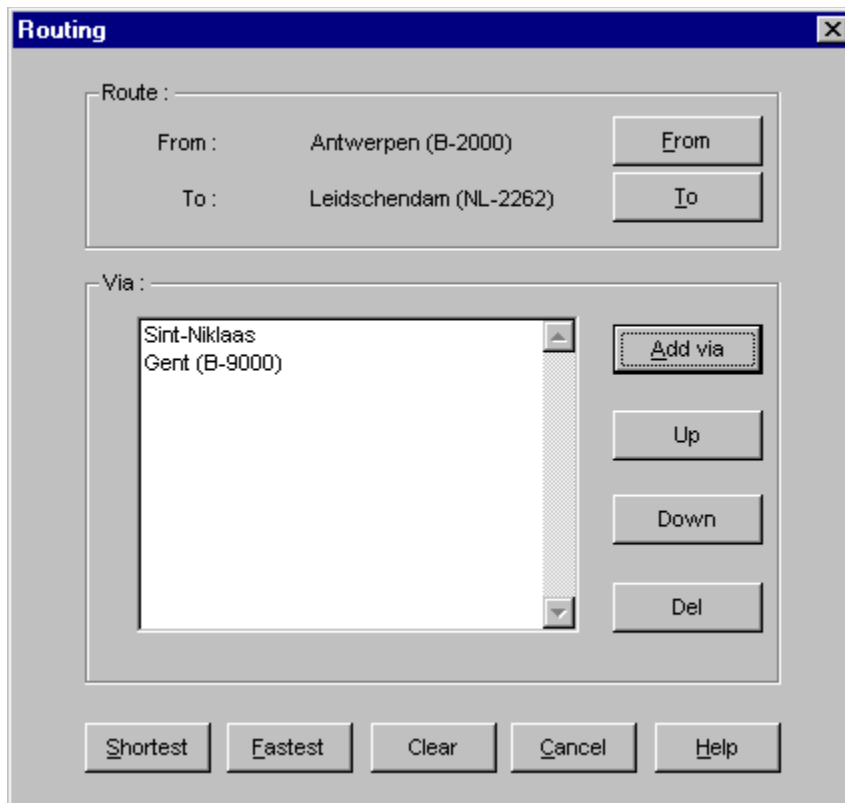
Click on the following icon in the toolbar or go to <Tools> in the menu header and select <Route>.



The dialogue box below will appear on the screen in which you may enter the particular journey you wish to make. You may also choose any places you wish to stop off en route, as well as the start and end points of the journey. The optimal route to be taken will be calculated on the basis of what is entered here.

Click on {From} to select the start point of your journey, {to} to select your destination and {Add Via} to select any stopovers you may wish to make en route.

While the optimal route for your journey is being calculated, a revolving globe will appear in a window on the screen.



The screenshot shows a 'Routing' dialog box with the following elements:

- Route:**
  - From: Antwerpen (B-2000) [From button]
  - To: Leidschendam (NL-2262) [To button]
- Via:**
  - List: Sint-Niklaas, Gent (B-9000) [Add via button]
  - [Up button]
  - [Down button]
  - [Del button]
- Bottom Buttons:** [Shortest], [Fastest], [Clear], [Cancel], [Help]

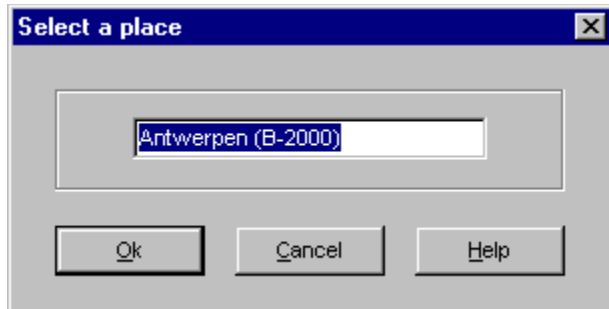
[Working with Cruise-A-Way Private](#)  
[Description of the Icons in the Toolbar](#)  
[The menu header](#)

## Searching for a place

Click on the following icon in the toolbar, or go to <Tools> in the menu header and select <Locate>.



This locates a place anywhere in the relevant country. Type the place name into the dialogue box which will appear on the screen. Click on {OK} when you have entered this.



[Searching on zipcode](#)

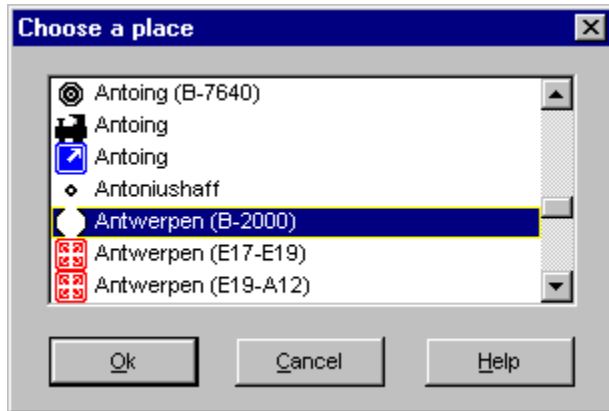
[Working with Cruise-A-Way Private](#)

[Description of the Icons in the Toolbar](#)

[The menu header](#)

## List of places

A list of places which are the same as and near to in alphabetical order to your choice will appear in a menu on the screen, with your actual choice highlighted in blue (if appropriate). Select the appropriate place, by scrolling up/down if needed, and click on OK to confirm your choice. The place will then appear highlighted on a map.



## The menu header

**File View Options Tools Window**

Clicking on an item in the menu header produces a pull down menu from which various options may be selected. Some selections involve dialogue boxes which appear and require you to select from various options. Click on the {OK} button in the window with the mouse to confirm your selection. Click on the relevant menu header option above for a description.

[Working with Cruise-A-Way Private](#)

## File

<b>F</b> ile	<b>V</b> iew	<b>O</b> ptions	<b>T</b> ools	<b>W</b> indow
<b>O</b> pen map...				
<b>P</b> rint...				
<b>E</b> xit		<b>A</b> lt+X		

Click on the relevant option in the diagram above for a description of that item or see below

[The menu header](#)

## View

<b>File</b>	<b><u>V</u>iew</b>	<b><u>O</u>ptions</b>	<b><u>T</u>ools</b>	<b><u>W</u>indow</b>
	<b>Z</b> oom <b>i</b> n			<b>C</b> trl+ <b>I</b>
	Z <b>o</b> om <b>o</b> ut			<b>C</b> trl+ <b>O</b>
	Z <b>o</b> om <b>e</b> x <b>t</b> ends			<b>C</b> trl+ <b>E</b>
	Z <b>o</b> om <b>r</b> oute			
	<b>M</b> ore detail			<b>C</b> trl+ <b>M</b>
	<b>L</b> ess detail			<b>C</b> trl+ <b>L</b>
	<b>S</b> cale			
	<b>O</b> verview window			
	<b>R</b> oute <b>d</b> escription			

Click on the relevant option in the diagram above for a description of that item

[The menu header](#)



## Options

<b>F</b> ile	<b>V</b> iew	<b>O</b> ptions	<b>T</b> ools	<b>W</b> indow
<b>B</b> ackground color...				
<b>C</b> hange language				
D <b>r</b> awing <b>m</b> ethod...				
D <b>r</b> awing <b>o</b> ptions...				
<b>V</b> ehicle options ▶				
<b>D</b> efault				
<b>L</b> oad				
<b>S</b> ave				

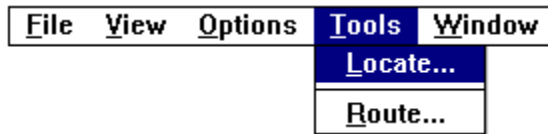
Selecting Options enables you to customise the program. Click on the relevant option in the diagram above for a description of that item or see below

[The menu header](#)

**Change language**

Change the language

## Tools



### **Locate.**

This performs the same function as the icon [Searching for a place](#).

### **Route.**

This performs the same function as the icon [Selecting a journey](#).

[The menu header](#)

## **Window**

Selecting Cascade cascades any open windows, Tile Horizontal/Vertical tiles open windows horizontally/vertically. At the bottom of the menu are displayed all the windows in use at the moment, with the actual one appearing on the screen indicated by a tick.

[The menu header](#)

## Software licence agreement

Software: Vierbergen NV, commissioned by DigiMap

Programmers: Luc Ducazu  
Rigo Schoeters  
Kurt Tys  
Paul Van den Bergh  
Wim Verdonck

Graphical design: Luc Ducazu

Product design : Olivier Derèze  
Hugo Vierbergen  
Rob Roffel

Handbook : Stefan Daelemans  
Michael John Dantas  
Hugo Vierbergen

Touristic information: Lannoo  
Kasteelstraat 97  
B 8700 Tielt  
Tel: 051 42 42 11  
Fax: 051 40 11 52

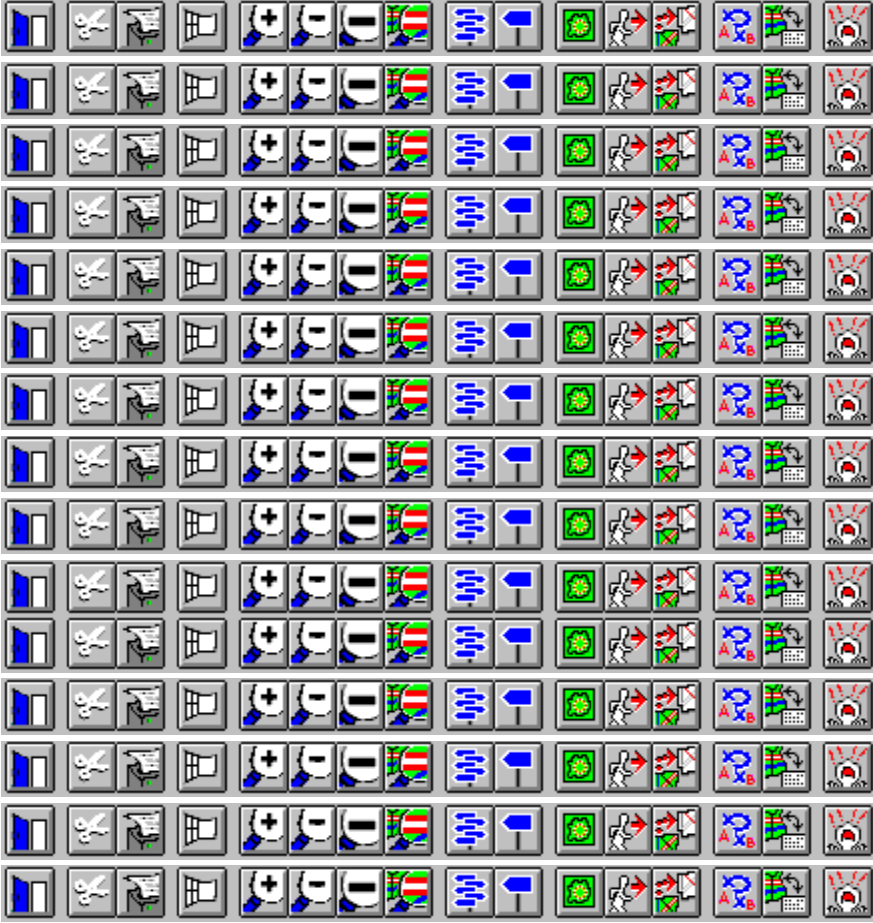
Campings information: A.C.S.I.  
Postbus 34  
NL 6670 AA Zetten  
Tel. 048 845 20 55  
Fax. 048 845 42 10

Cartografie: AND mapping B.V.

Unless otherwise stated by law, without the written permission of the legal copyright holder nothing from this text may be copied, and/or made public by means of publishing, photocopying, microfilm or any other methods, in whole or in part. This is also applicable for software described in this handbook, in whatever computer language or form. The software may be installed on each of the computers in the possession of the user. It is not permitted to make copies of the original CD. A permit to use the software on many machines at the same time, and also within a network, may be obtained. Please contact us for information.

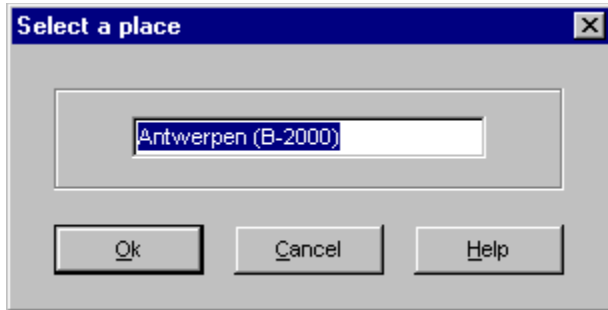
8 March 1996

Cruise-A-Way Private is a trade mark of DigiMap.



## From

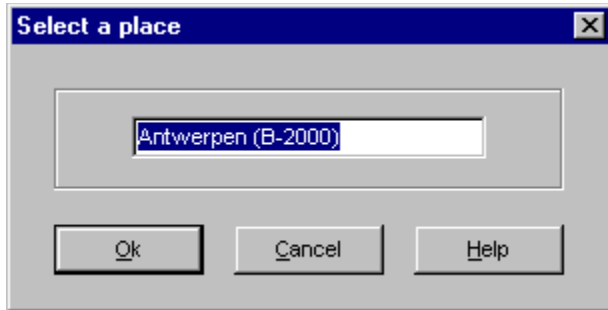
When you select {FROM}, you can select a place by entering a name or a zipcode.



[Searching on zipcode](#)

## To

When you select {TO}, you can select a place by entering a name or a zipcode.

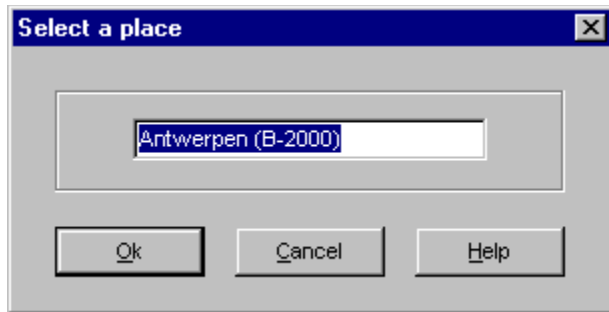


[Searching on zipcode](#)



## Add via

When you select {ADD VIA}, you can select a place by entering a name or a zipcode.



[Searching on zipcode](#)

## **Open map**

To open a new map click on this icon, and select the relevant map from the selection in the window.

**Zoom in**

Zooms in on an area of the map in the current view.

**Zoom out**

Zooms out of the area of the map in the current view.

## **New Map View**

This opens a new map view. A new map of the entire country currently selected will appear in a window on the screen. By keeping the left mouse button pressed and moving it over an area of the map, it is possible to zoom in on a selected area.

## **Map View 1**

This is a map of the entire country currently selected. By keeping the left mouse button pressed and moving it over an area of the map, it is possible to zoom in on a selected area.

**More Detail**

Gives more detail in the current view (shows more roads, places, and so on.) If the view is for a large area, this may result in the screen becoming cluttered.

**Less Detail**

Gives less detail in the current view (shows only the more important roads, places, and so on.)



## Overall View

This displays the entire relevant country map in a window in the screen, with the area appearing in the current view being highlighted. When you click on this area the linked map (the same number) will be activated.



**Scale**

When a tick appears by this option the scale of the map in kilometers will be indicated on the map.

## **Help**

Selecting <Help> gives relevant information on the Cruise-A-Way Private program and its applications. If further help is needed, [telephone support is available\(\\*\)](#).

**Zoom All**

Gives an overall view of the entire country map and your position in that map.

**Current Route**

Gives the view for the route currently selected. The route selected will be highlighted on the map.

**Print**

You can make a printout of everything currently appearing in the active window or setup your printer.

## Types

Make a selection from the options available. The current selection is highlighted in blue.



This type of info will only be visible dependent on the active zoom level.



This type of info will always be shown.



This type of information wont be visible.

To change these types, just double click on them.

**Example**

An example of the item selected in the above box is displayed here.



**Routing** [X]

Route :

From : Antwerpen (B-2000) [From]

To : Leidschendam (NL-2262) [To]

Via :

Sint-Niklaas  
Gent (B-9000)

[Add via]

[Up]

[Down]

[Del]

[Shortest] [Fastest] [Clear] [Cancel] [Help]



**OK**

Click on {OK} to confirm a selection.

**Cancel**

Click on {Cancel} to exit from the dialogue box.

**Font**

Select a font from the options available.

**Via**

The stopovers selected will appear in this box. You may select as many stopovers as you wish.

**Down**

Move via downwards.

**Up**

Move via upwards.

## **Delete**

Delete via.

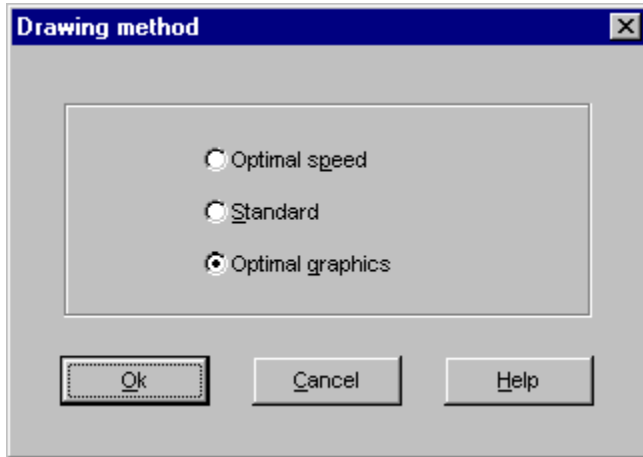


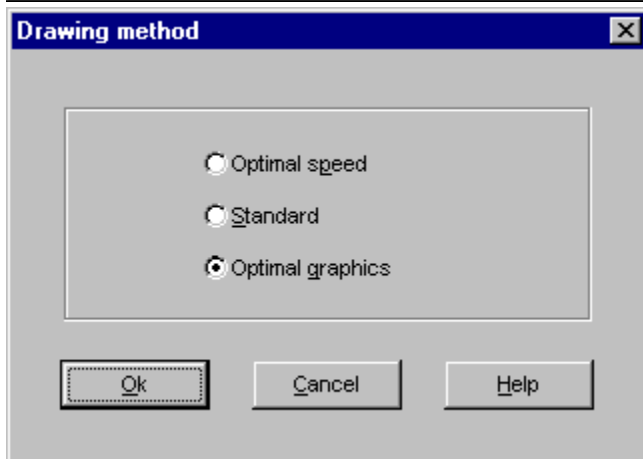
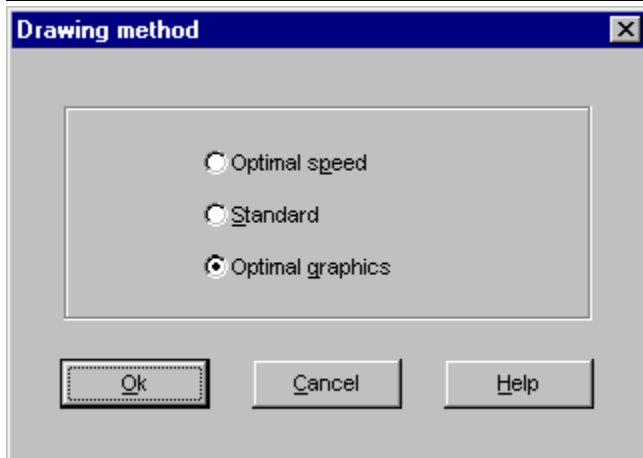
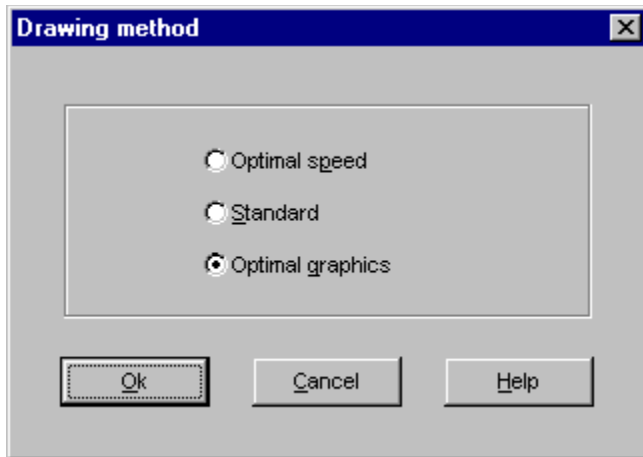
**Default**

This sets all the variables to the default values.

## Drawing Method

This specifies the manner in which the maps are drawn. There is a tradeoff between the speed at which the maps are drawn and the graphical detail used. Click in the check box for an explanation.





### **Optimal speed**

When you select optimal speed, the quality of the drawing will be less and the speed will rise.

## **Optimal graphics**

When you select optimal graphics, the program runs slower but you see more details on the map.

**Standard**

Standard is a selection with good graphics and good speed, and the performances are somewhere between the other two choices.

**Background colour**

A window will appear from which you may select the background colours from the palette.

**Exit**

Exit from the Cruise-A-Way private program.



## Vehicle options

The vehicle options screen allows you to enter information about your car and various speeds for various types of road. Enter the information in the dialogue box which will appear.

You can load and save your vehicle options through the menu.

You can also reset the default values.

**Vehicle options**

Consumption

Tank capacity : 50 litre

Petrol consumption : 10.0 / 100 km

Warning level : 8 litre

Speed (km / h)

Motorway :	120	Tunnel :	60
Dual carriageway :	120	Ring Road :	50
Highway :	120	Boulevard :	50
Regional road :	90	Main street :	50
Local road :	90	High street :	40
Other road :	90	Ordinary street :	30
Ferry :	40	Side street :	30

OK Cancel Help

[The menu header](#)

**Tank capacity**

Enter the capacity of your tank here in litres.

**Petrol consumption**

Enter the petrol consumption per 100 km for your vehicle here.

**Warning level**

Enter the tank level for a warning here.

**Speed**

Enter the relevant speed for each particular type of road here.

**Load**

[Click here to load settings.](#)

**Save**

[Click here to save settings.](#)

## **Copy Map**

Copies the current map view onto the clipboard.



## **Shortest**

Click here if you want to calculate the shortest route.

**Fastest**

[Click here](#) if you want to calculate the quickest route.

## Legend

Click on the elements used in the map for an explanation.





Select a place ✕

Antwerpen (B-2000)

Ok Cancel Help

**Junction**

Motorway exit.

## **Intersection**

2 motorways cross each other.

**Border**

Connection between 2 countries.

**Capital**

The capital of a country.



**Large City**

More than 50000 inhabitants.

## **Medium City**

Between 100000 and 500000 inhabitants.

**Small City**

Between 50000 and 100000 inhabitants.

**Town**

Between 20000 and 50000 inhabitants.

**Village**

Between 5000 and 20000 inhabitants.

## **Small Village**

Between 2000 and 5000 inhabitants.

## **Tiny Village**

Less than 2000 inhabitants.

## **Railway Station**

The possibility to take a train.



## **Airport**

The possibility to take an airplane.

## **Gas Station**

The possibility to fill your car with petrol.

## **Registration**

Fill in your registration card and you will receive the latest information about new products that are being developed.

We want to support you in times of need, but in order to use that service you need to be a registered user. Therefore we ask you to fill in your registration card and send it to us.

## **Installation for Windows 3.1**

Installing and starting up Cruise-A-Way Private is simple.

- Start up windows
- Place the CD in the drive
- Open the program manager and select File.....Start.....
- Type <X>\SETUP. What you type in <X> will be the name of the relevant station.
- Follow the instructions which will appear on your screen. You will be asked to give a directory in which Cruise-A-Way Private must be installed.
- The Cruise-A-Way Private icon will then appear in the program manager, in the program group Cruise-A-Way Private.
- Double click on the Cruise-A-Way Private icon. The main screen of Cruise-A-Way Private will then appear. It will now be ready to start using the program.

## **Installation for Windows 95**

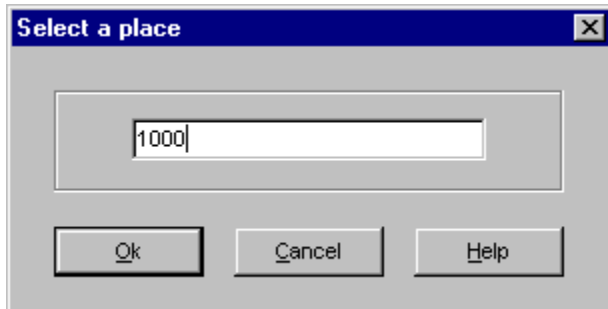
In Windows 95, the installation program is automatically started when you insert the CD in your drive. Just follow the instructions on your screen.

## Searching on zipcode

You can also enter the zip code when you want to search a place. You can type the whole number or a piece of the number and when you press OK, a list will appear containing all the postcodes beginning with that number.

When you are selecting a zipcode from your own country, simply typing the number is sufficient. But when you want to select a place abroad, you have to type the nation code.

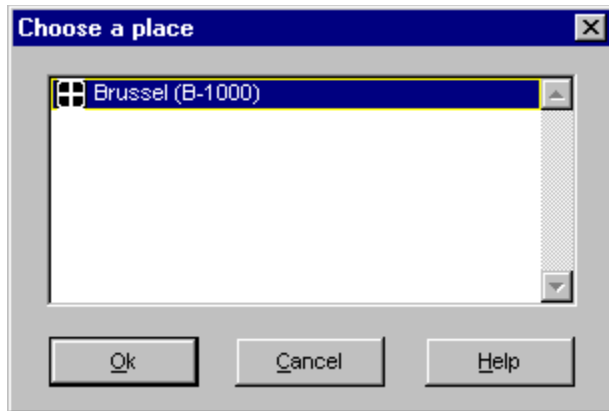
e.g.: You are Belgian, and you want to find the place in The Netherlands with a zipcode that is equal to 2266. You type NL2266, NL-2266 or NL 2266 and click on OK.



[Searching for a place](#)  
[Working with the program](#)

## List of places with same zipcode

When you have clicked on OK after filling in a zipcode while searching for a place, this list will appear.



[Searching on zipcode](#)

[Searching for a place](#)

[Working with the program](#)

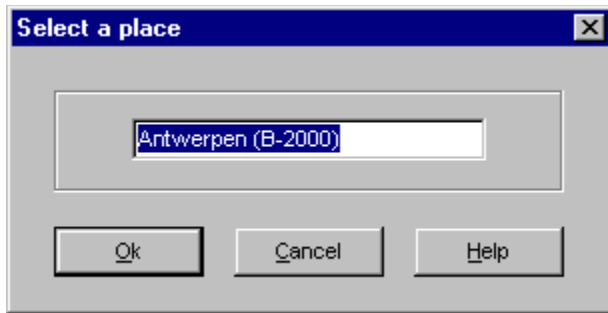
## **Requirements**

You will need the following in order to be able to install the software:

IBM PC 386 or higher, PS/2 or 100% compatible  
Microsoft Windows 3.1 or higher (also Windows 95)  
8MB RAM  
CD-ROM drive

There are no specific requirements for your printer.





**View point on map**

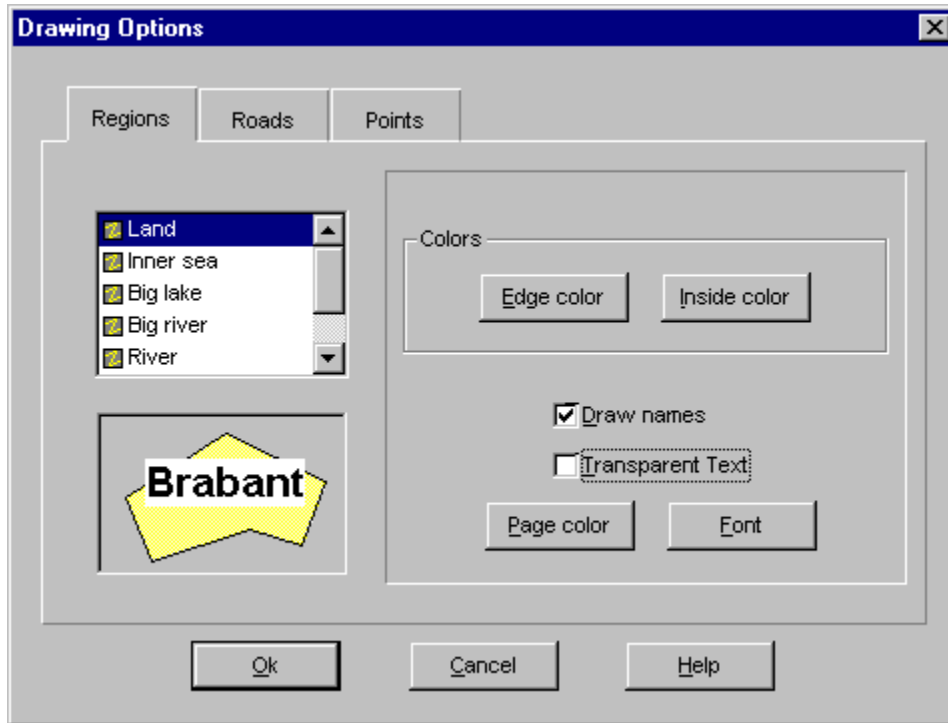
When you double-click on an item in the route description. You will see this point visualized in the map window.

## Popup menu

When your mouse pointer changes to a cross on the map, you can drag a rectangle to zoom in on an area. When you use the right mouse button on the map you will see the following menu.

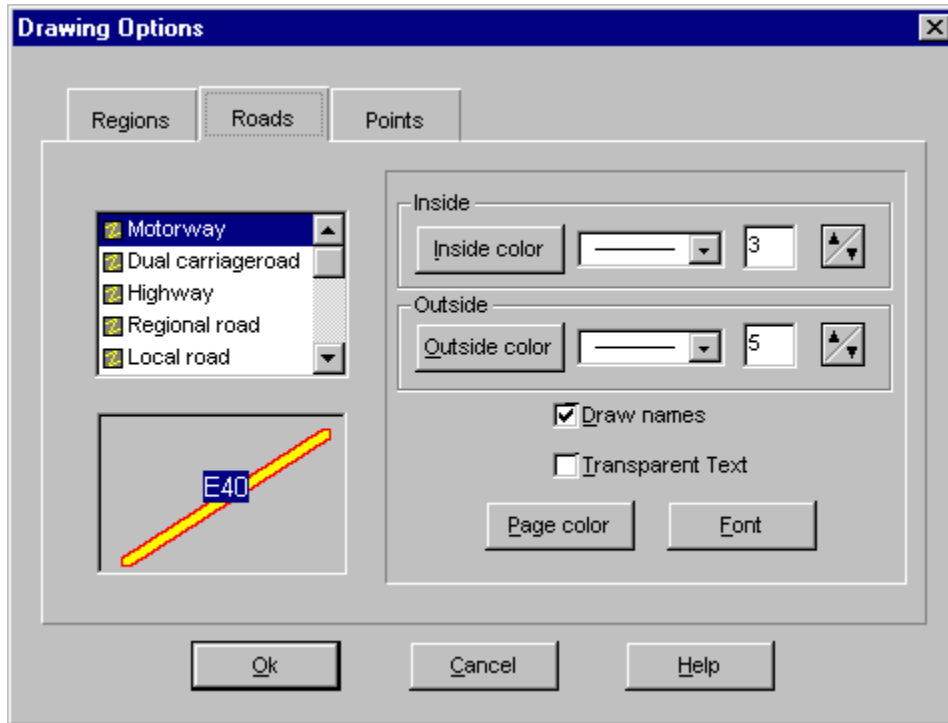
Zoom in	Ctrl+I
Zoom out	Ctrl+O
Zoom extends	Ctrl+E
Zoom route	
<u>M</u> ore detail	CTRL+M
<u>L</u> ess detail	CTRL+L
<u>B</u> ackground color...	
<u>D</u> rawing method...	
<u>D</u> rawing options...	
<u>R</u> oute...	
<u>R</u> oute description	

## Drawing options for regions



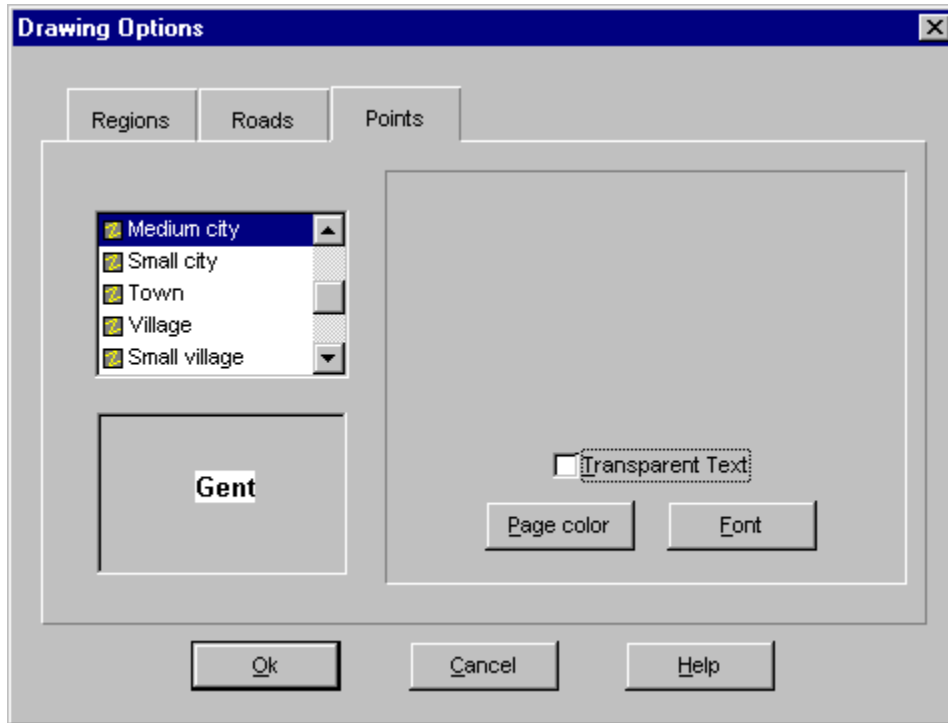
Allows you to change the colours of land, rivers, etc. on the maps. Choose which type of region you wish to redesign from the options available, then select the colours from the palette which will appear in a window. Click on {OK} to confirm your choice.

## Drawing options for roads

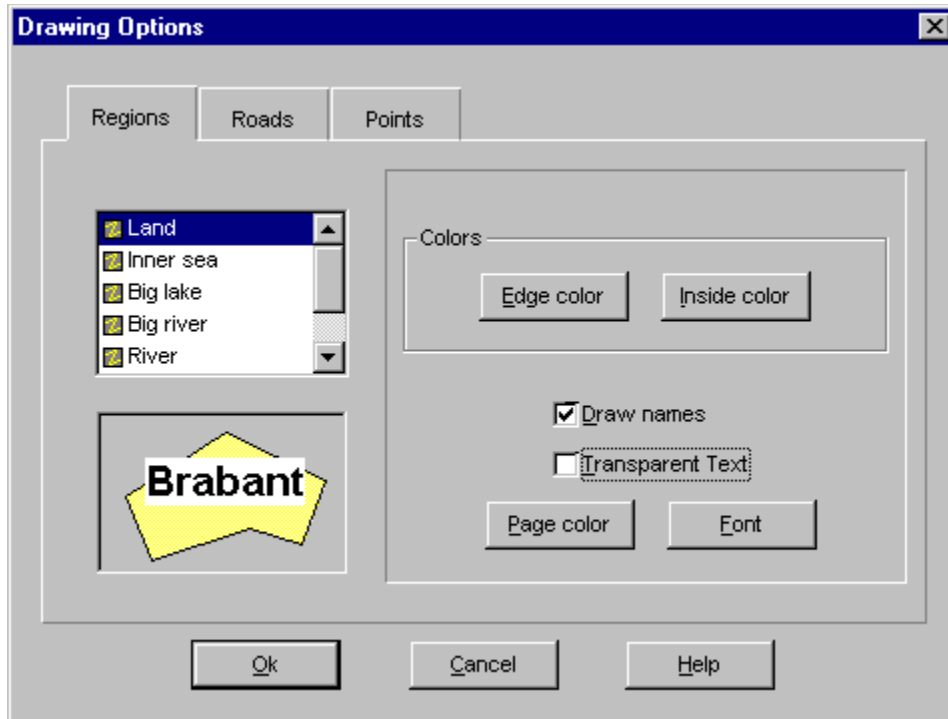
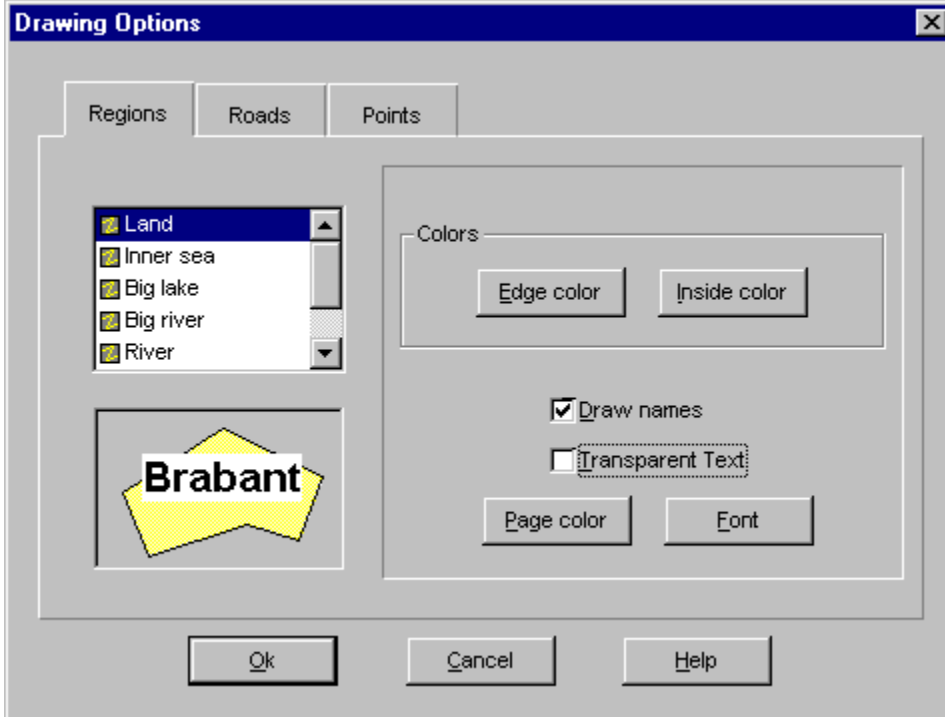


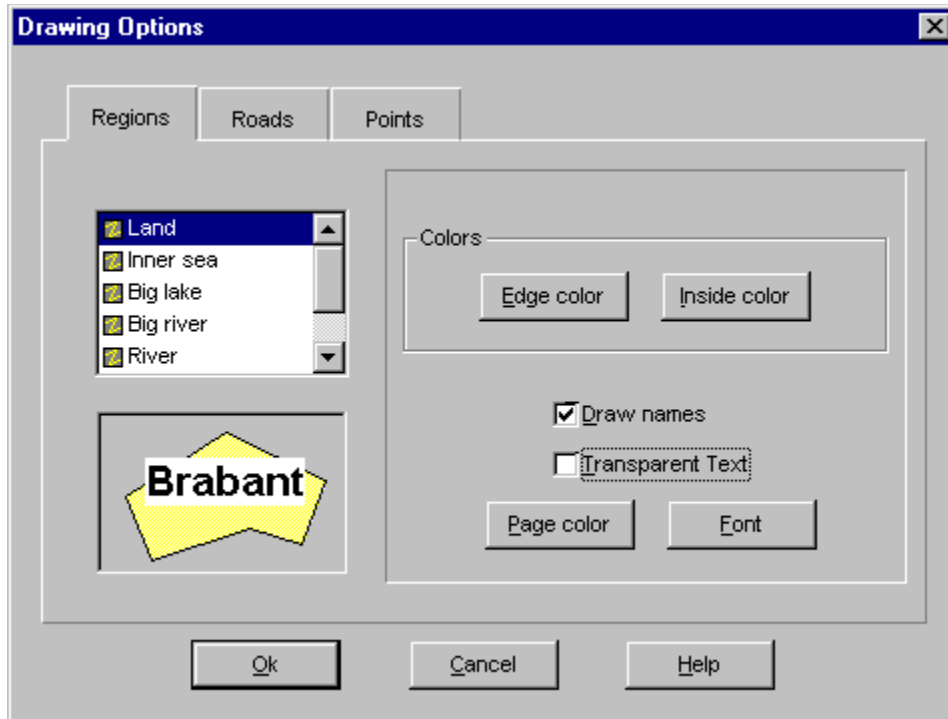
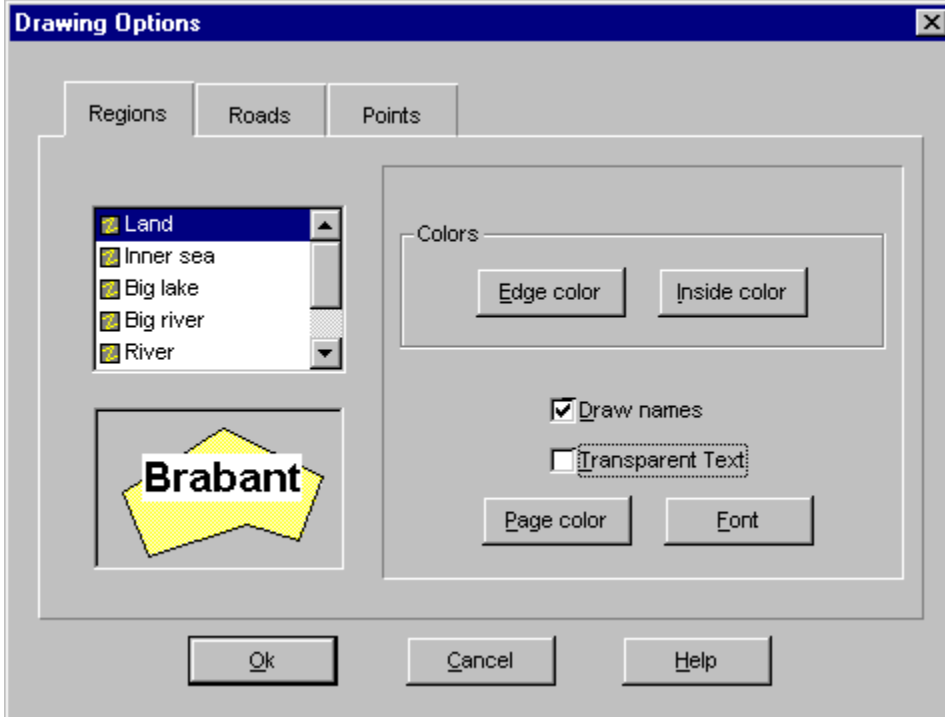
Allows you to change the colours of the roads on the maps (inside and outside colours where appropriate). Choose which type of road you wish to redesign from the options available, then select the colours from the palette which will appear in a window. Click on {OK} to confirm your choice.

## Drawing options for points

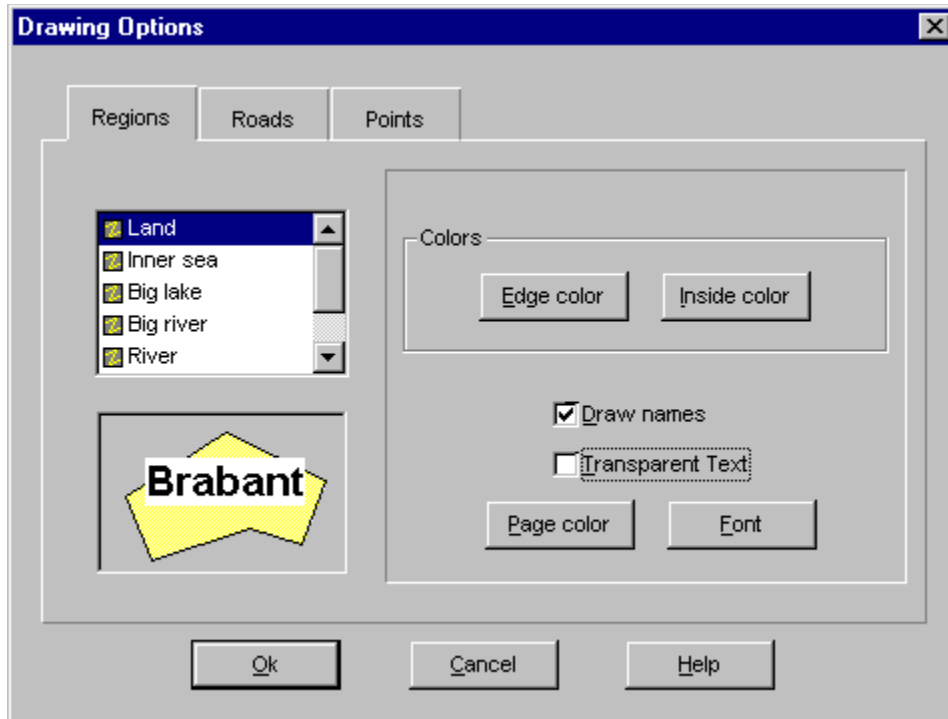
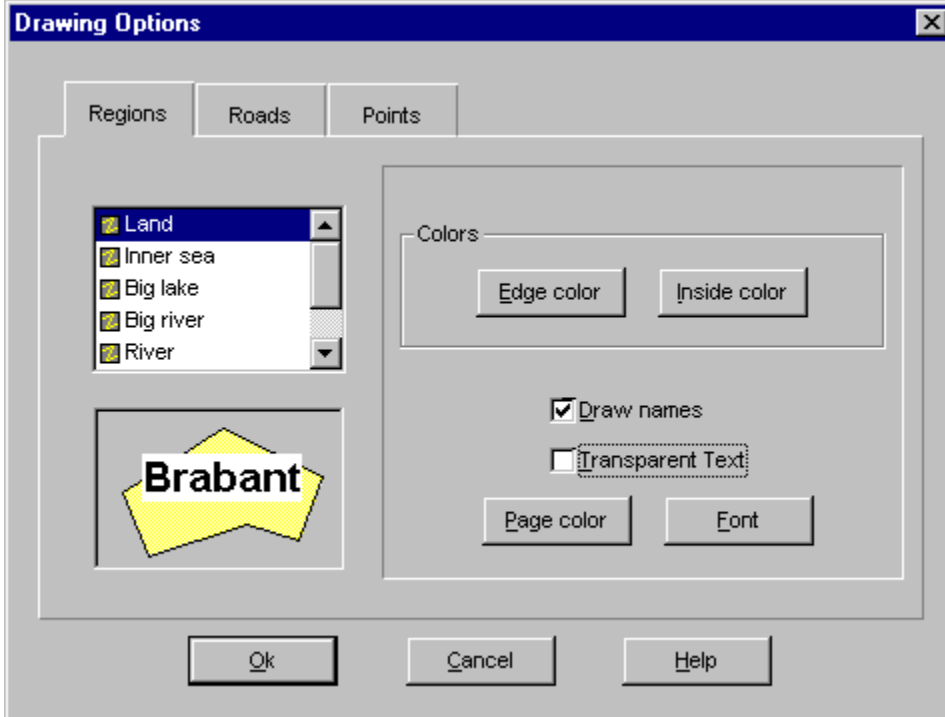


Allows you to change the colours and/or the font of the points indicated on the maps. (for example, city/village names). Choose which type of point you wish to redesign from the options available, then select the colours/fonts from the palette/options which will appear in a window. Click on {OK} to confirm your choice.









**Edge color**

Select here the color for the edge. This is the color of your roads when working with Drawing mode [Optimal speed](#).

**Inside color**

Select here the inside color.

## **Transparent text**

Transparent text has the same background color as the screen.

**Draw names**

Select whether or not to show the names.

**Page color**

Select here the background color for the names. You can only select this if you dont use transparent text.

**Font selection**

Select the font you want to be used when drawing names.

## Distributors

The Cruise-A-Way products are available directly from DigiMap or from of our local distributors.

Digimap nv  
Mechelsesteenweg 301  
2830 Willebroek  
Belgium  
Tel : 003238609292  
Fax : 003238867545

Digimap bv  
Vlietweg 17  
2266 KA Leidschendam  
Netherlands  
Tel.: 0031703208464  
Fax: 0031703208126

Digimap France  
10 Rue de Chevreul  
92150 Suresnes  
France  
Tel.: 0033141388600  
Fax: 0033146977717

S.A.D.  
Rötelbachstrasse 91  
89070 Ulm  
Germany  
Tel.: 00497305962931  
Fax: 00497305962933

S.A.D.  
Bahnhofstrasse 180  
8783 Gaishorn am See  
Austria  
Tel.: 004336172566  
Fax: 0043361725664

Dataholding  
Ole Deviksvei 14  
Postboks 6499 Etterstad  
0606 Oslo Norway  
Tel.: 004722651415  
Fax: 004722640544

FastTrack  
26 Greenhil Crescent  
Watford Businesspark  
WD1 8XG Watford Hertfordshire  
Tel.: 00441923495496  
Fax: 00441923228796

Fortuna data  
Herstedostervej 9  
2600 Glostrup  
Denmark  
Tel.: 004543444412  
Fax: 004543450797

Input Soft AB  
Lektorsgatan 3  
645 23 Strängås  
Sweden  
Tel.: 004615216260  
Fax: 004615214980

Other addresses : Contact DigiMap or one of our local distributors.







