



## Contents

Play strangely beautiful sounds by moving the mouse. One direction controls pitch; another direction changes volume.  
[Getting Started.](#)

[Menu Commands](#)  
[Controls](#)

[Troubleshooting](#)  
[Advanced Topics](#)  
[What Is Shareware?](#)  
[Registration](#)

[More Neat Stuff...](#)

## Menu Commands

### File

[Save setup](#)

[Exit](#)

### Options

[Advanced setup...](#)

### Help

[Contents](#)

[Using help](#)

[What is Shareware?](#)

[Register](#)

[About](#)

Saves all control settings

Saves current control settings and ends program

Displays dialog window with control settings for expert users

Displays main Help for this program

Displays standard information for using Windows Help

Explains the shareware concept



[Click here to view register your shareware, or to view registration information](#)

Displays general information about the program

## Controls

### Main window

[Volume](#)

[Pitch](#)

[Play](#)

[Stop](#)

### Advanced settings dialog

[22kHz](#)

[44kHz](#)

[Mono](#)

[Stereo](#)

[8 Bit](#)

[16 Bit](#)

[Minimize at start-up](#)

[Play at start-up](#)

Limits maximum volume during Play

Limits maximum pitch during Play

Click this to begin Play.

[Click here to stop sound.](#)

Adjusts sound to 22kHz sampling rate



Adjusts sound to 44kHz sampling rate

Makes sound output mono instead of stereo

Makes sound output stereo instead of mono

Creates sounds 8-bit resolution

Creates sound with 16-bit resolution

Makes this program an icon at start-up

## Troubleshooting

### Why don't I hear any sound?

First, verify that your sound card plays sounds with other programs. For instance, use Media Player, which comes with Windows 3.1, to play a .WAV file. If you still don't hear any sounds, refer to your sound card manual. Good luck.

### I can't make the sound loud enough with the Volume control

Many sound cards come with a Mixer program applet which allows the user to individually control the volume of various resources on the sound card, such as digital sound output channel, MIDI, AUX, etc. If your sound card has such a mixer, try to adjust the channel variously labelled: .WAV Output, Digital sound Output, or something similar. Also, usually one control is used to adjust ALL the sound outputs together. Play with both these controls to get the desired sound volume range.

On Win95 systems, the mixer settings may be adjusted by double-clicking on the Volume icon at the far right of the TaskBar at the bottom of the screen. If your taskbar does not have a volume control, double-click the My Computer icon, then Control Panel, then Multimedia, then click on the "Show volume control on the taskbar" checkbox on the Audio dialog tab.

### Why so much delay in sound after moving mouse?

Users may notice a delay between moving the mouse and hearing the corresponding tone. This is a side-effect of using digital sound output with Windows. We plan to reduce this delay to imperceptible levels in future versions of our program.

### Why do I hear a clicking sound (or other noise)?

Let us know if you hear strange noises. We try to test this software with many different sound cards, but many more are being sold. We welcome bug reports. Our email address is [sells@sagebrush.com](mailto:sells@sagebrush.com).

Also, if you hear clicks, try changing your sound card's dma buffer size in the sound card set-up program, if your sound card supports this feature.

## Advanced Topics

### How Does MouSing Work?

MouSing uses the digital sound output capabilities of your sound card. (There are easier ways, but they are not guaranteed to be compatible with all sound cards. Using digital sound assures compatibility with Windows.)

In other words, MouSing uses the same resources as playing a .WAV file. Some musicians and other users may notice a delay between moving the mouse and hearing the corresponding tone. This is a side-effect of using digital sound output with Windows. Hopefully, this delay will be reduced to imperceptible levels in future versions of our program.

### What is a Theremin?

MouSing was inspired by the theremin, a unique electronic musical instrument invented prior to 1921 by Leon Theremin. The theremin is played by moving hands near two antennas to vary pitch and volume. The theremin was the world's first electronic music instrument, and is regarded as an ancestor of the keyboard synthesizer.

### Now I'm Interested in Theremins. More Info?

If you have Web access, pointers to several sources of theremin information may be found at:

<http://www.sagebrush.com/~sells/theremin.htm>

If you can get to the Web, check the URL above for latest information.

Theremins and theremin kits may be purchased from  
Big Briar, Inc.  
554-C Riverside Drive  
Asheville, NC 28801

or

PAiA Electronics, Inc.  
3200 Teaksood Ln  
Edmond, OK 73013

Here are some articles for constructing your own theremin:

Fisher and Wilkinson, "Build the Optical Theremin", *Electronic Musician*, May 1995.  
Rothman, "Constructional Project- Simple Theremin", *Everyday Electronics*, September, 1995.

Plans for building your own Theremin can be obtained from this FTP site (paths may change due to the mutagenic properties of the Internet)

<ftp://ee.ualberta.ca/pub/cookbook/misc/theremin.txt>:

We haven't tried any of these sources yet. Proceed with due diligence. (Addresses current as of date of writing.)



## Look, No Wires

One unique property of the Theremin is that you do not actually touch the instrument. With MouSing, you are usually tethered to a computer with a mouse. Gyration, Inc. of Saratoga, California, offers the GyraPoint Pro, a wireless RF mouse with a built-in gyroscope which allows the user freedom of movement; no desktop required. (Not an endorsement, information purposes only.)

## Shortcuts and Expert User Info...

Sound stops when MouSing is not the focus window. One may stop sound by clicking on any other window or the desktop.

To toggle between Play and Stop, use the right mouse button when the application is minimized: just right-click on the icon.

MouSing can accept a command-line switch to begin listening immediately. This is useful to start up MouSing from some other program like a Windows-batch utility or time-scheduler. If this filename argument is present, MouSing starts playing immediately after initialization. The command invocation looks like:

```
<path>\mousing /P
```

## **What Is Shareware?**

Shareware distribution gives users a chance to try software before buying it. If you try a Shareware program and continue using it, you are expected to register. Individual programs differ on details -- some request registration while others require it, some specify a maximum trial period. With registration, you get anything from the simple right to continue using the software to an updated program with printed material.

Copyright laws apply to both Shareware and commercial retail software, and the copyright holder retains all rights, with a few specific exceptions as stated below. Shareware authors are accomplished programmers, just like commercial authors, and the programs are of comparable quality. (In both cases, there are good programs and bad ones!) The main difference is in the method of distribution. The author specifically grants the right to copy and distribute the software, either to all and sundry or to a specific group. For example, some authors require written permission before a commercial disk vendor may copy their Shareware.

Shareware is a distribution method, not a type of software. You should find software that suits your needs and pocketbook, whether it's commercial or Shareware. The Shareware system makes fitting your needs easier, because you can try before you buy. And because the overhead is low, prices are low also. Shareware has the ultimate money-back guarantee -- if you don't use the product, you don't pay for it.

## Registration and Support

You are permitted to use the unregistered shareware version of MouSing for 30 days. If you wish to use this product beyond the 30 day trial period, you must register. [License agreement](#).

Purchasing the registered version of MouSing gives these benefits:

- Registration is the right thing to do. Registering allows us to continue upgrades to the program and introduce new products.
- The latest and greatest version of this program.
- Free updates for all 1.x and 2.x releases of this program. (Modest shipping charge.)
- Both the Win31 and Win95 versions of MouSing.
- Free mail support, and free e-mail support at [sells@sagebrush.com](mailto:sells@sagebrush.com).
- E-mail upgrade announcements and new product announcements.

We offer these ways to register:

- Send a check or money order by mail. We really appreciate when our customers use this order method, as it keeps our overhead costs low so we can continue to offer quality products at a low price. The price using this method of payment is \$15.00, and shipping and handling charges are waived for orders inside North America. [Registration form](#).
- Credit card processing: You can order with MasterCard, Visa, American Express, or Discover from PsL, Public (software) Library, by calling 800-2424-PsL or 713-524-6394 or by FAX to 713-524-6398 or by CIS Email to 71355,470. You can also mail credit card orders to PsL at P.O Box 35705, Houston, TX 77235-5705. THESE NUMBERS ARE FOR ORDERS ONLY!!!! Any questions about the status of shipment of the order, refunds, registration options, product details, technical support, volume discounts, dealer pricing, etc., must be directed to Sagebrush Systems, P.O Box 3094, Corrales, NM 87048, [sells@sagebrush.com](mailto:sells@sagebrush.com). To insure that you get the latest version, PsL will notify us the day of your order and we will ship the product directly to you. The price using this method of ordering is \$15.00 plus \$5.50 shipping and handling, or \$6.50 shipping outside the U.S. Refer to item number #14344.

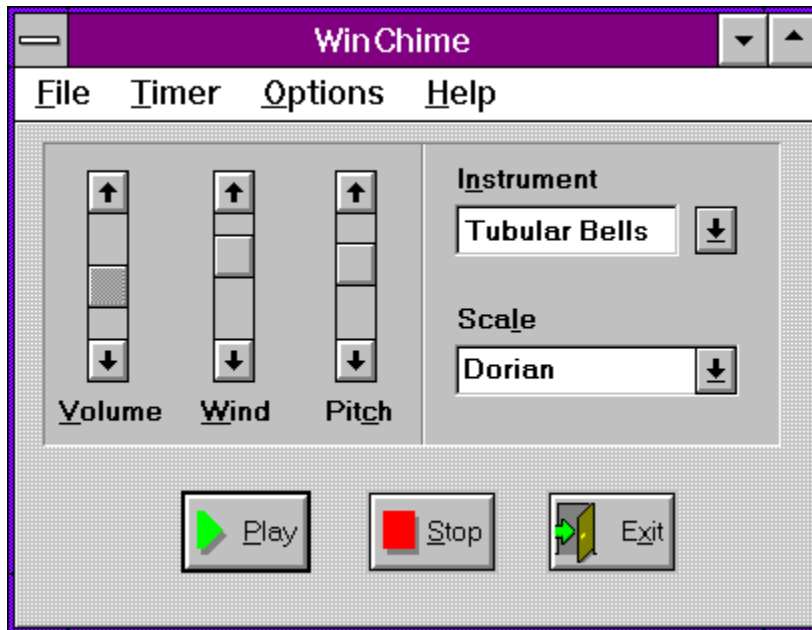
## More Neat Stuff...

If you like this program (or even if you don't), be sure to check out these other software titles from Sagebrush Systems!



### WinChime for Windows

Relax to the peaceful sounds of wind chimes, as simulated with the MIDI capabilities of your sound card. Sound parameters are easily changed to fit your particular mood. A built-in timer can control on and off events to keep sounds interesting. This is a gentle way to mask out unwanted noise in the home or office. Requires Windows 3.1



Available on the Internet at <ftp.cica.indiana.edu/pub/pc/win3/sounds> as `wchime11.zip` (where '11' is a version number that is subject to change). Also available wherever finer shareware titles are distributed.



### Applaud for Windows

Impress your friends! Turn your sophisticated multimedia computer into one of those gadgets-that-turn-things-on-and-off-by-clapping-your-hands. Applaud runs in the background, monitoring your sound card microphone input and detecting the noise signature of clapping. Different programs can be launched for two-clap and three-clap signals. A special "stealth mode" is implemented for the Sound Blaster 16 and some compatible sound cards, to allow simultaneous listening and sound output. Sound card with Automatic Gain Control (AGC) microphone input strongly recommended.



Available on the Internet at [ftp.cica.indiana.edu /pub/pc/win3/sounds](ftp:cica.indiana.edu/pub/pc/win3/sounds) as `applau10.zip` (where '10' is a version number that is subject to change).

### More great programs appearing soon!

We are currently developing more shareware and commercial-ware software applications for Windows 3.1 and Windows 95. For you Internet surfers, a WEB page is available at

<http://www.sagebrush.com/~sells/>

or you can email

[sells@sagebrush.com](mailto:sells@sagebrush.com)

to request for more details. Or better yet, register this software and get our latest product catalog and request to be on our e-mail list for new announcements!

## **Distribution License**

### **CONDITIONS FOR DISTRIBUTION**

The following conditions apply to the UNREGISTERED SHAREWARE VERSION of this program only. No permission to distribute any other version of this program is granted.

Individual users may freely copy this program and share it with friends.

ASP-approved vendors and ASP-approved BBSs automatically comply with the requirements for distribution of this program, with the provision that you must immediately stop selling/distributing copies of this program upon notice from the author.

Distributors and vendors may charge no more than \$10.00 per disk for copies of this software.

The files on this disk may not be modified or adapted in any way. All of the files or groups of files must be distributed together. Additional files may be added and this software may be combined on a disk or CD-ROM with other programs.

This software may not be represented as anything other than shareware, and the shareware concept must be explained in any ad or catalog or packaging. Specifically, ads or other literature which describes this product as "free software" are not allowed.

You must immediately stop selling/distributing copies of this program upon notice from the author.

## Getting Started

Chances are, your system is already set up correctly for sound output if you have a sound card installed. Go ahead and try out MouSing by clicking on the Play button. If you hear acceptable sound after adjusting the Volume-limit slider control, you are all set! Otherwise, refer to the procedure detailed under "[Troubleshooting](#)".

Press the Play button.

Moving the mouse to the right increases pitch.  
Moving the mouse to the left decreases pitch.  
The pitch slider control limits the maximum pitch.

Moving the mouse up increases volume.  
Moving the mouse down decreases volume.  
The volume slider control limits the maximum volume.

Note that the mouse doesn't have to be over the MouSing window. Sound continues as long as the MouSing window is on top.

Leaves About dialog without registering



Displays help-information for this dialog

Displays information to assist registration

Starts application in Play mode.

Status Bar: Pitch | Volume | Mono/Stereo | Sampling Rate | Resolution

## **License Agreement**

**Copyright 1995 Sagebrush Systems, Inc.**

**All rights reserved.**

[Distribution License](#)

INSTALLATION OF MouSing ON YOUR COMPUTER SYSTEM IMPLIES AGREEMENT WITH THE TERMS AND CONDITIONS BELOW.

DISTRIBUTION OF MouSing, ITS ACCOMPANYING PROGRAMS AND DOCUMENTATION IS CONSIDERED AS IS. SAGEBRUSH SYSTEMS, INC. OFFERS NO WARRANTIES OF ANY KIND, EXPRESSED OR IMPLIED. THIS INCLUDES, BUT IS NOT LIMITED TO, WARRANTIES OF MERCHANTABILITY OR FITNESS FOR A PARTICULAR PURPOSE. UNDER NO CIRCUMSTANCES WILL SAGEBRUSH SYSTEMS, INC. BE LIABLE FOR ANY DAMAGES WHICH RESULT FROM THE USE OF THIS PROGRAM OR THE INABILITY TO USE IT. EXCLUSION FROM LIABILITY INCLUDES, BUT IS NOT LIMITED TO, LOST PROFITS, LOST SAVINGS, OR ANY OTHER INCIDENTAL OR CONSEQUENTIAL DAMAGES.

THIS AGREEMENT SHALL BE GOVERNED BY THE LAWS OF THE STATE OF NEW MEXICO.

MouSing is distributed as Shareware. It is not free, public domain, or freeware. You may use MouSing for a trial period of thirty days. To use MouSing beyond this trial period, you must register and pay the applicable registration fee.

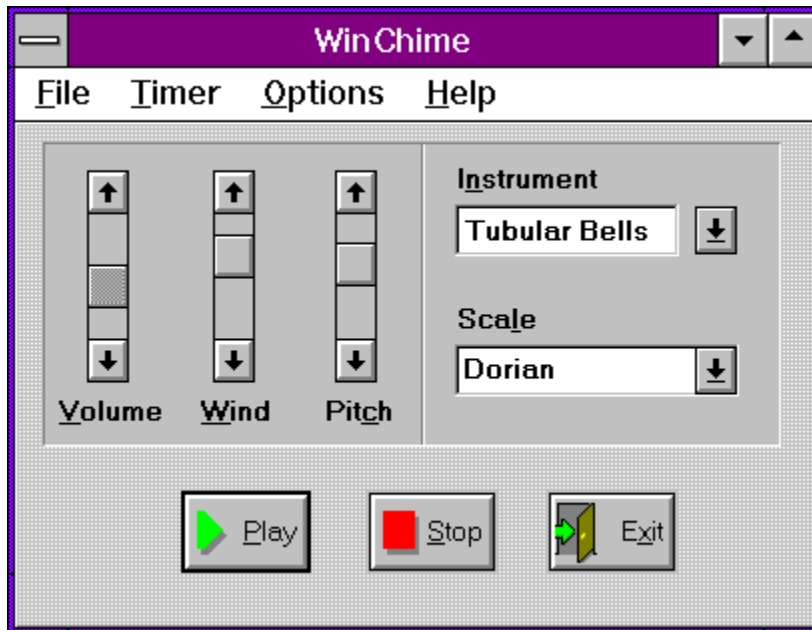
## More Neat Stuff...

If you like this program (or even if you don't), be sure to check out these other software titles from Sagebrush Systems!



### WinChime for Windows

Relax to the peaceful sounds of wind chimes, as simulated with the MIDI capabilities of your sound card. Sound parameters are easily changed to fit your particular mood. A built-in timer can control on and off events to keep sounds interesting. This is a gentle way to mask out unwanted noise in the home or office. Requires Windows 3.1

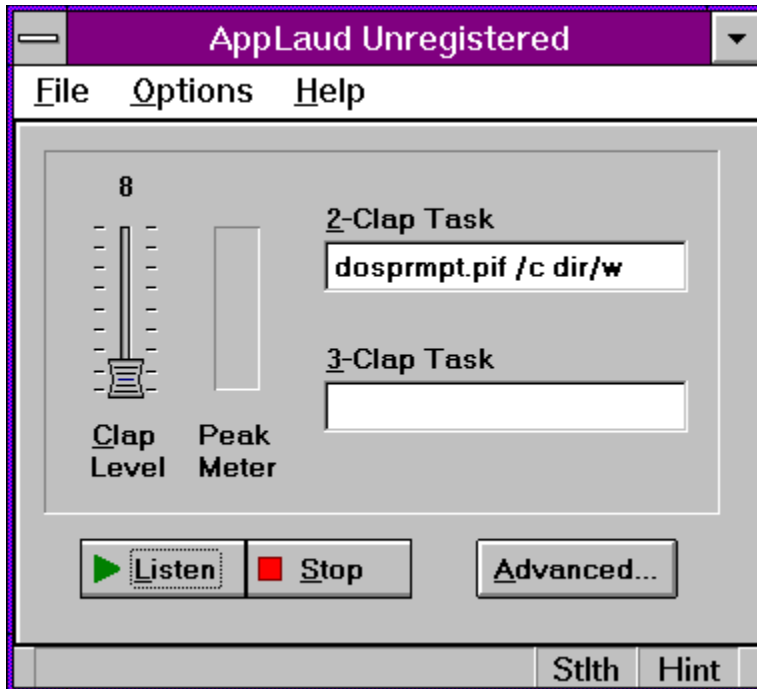


Available on the Internet at <ftp.cica.indiana.edu/pub/pc/win3/sounds> as `wchime11.zip` (where '11' is a version number that is subject to change). Also available wherever finer shareware titles are distributed.



### Applaud for Windows

Impress your friends! Turn your sophisticated multimedia computer into one of those gadgets-that-turn-things-on-and-off-by-clapping-your-hands. Applaud runs in the background, monitoring your sound card microphone input and detecting the noise signature of clapping. Different programs can be launched for two-clap and three-clap signals. A special "stealth mode" is implemented for the Sound Blaster 16 and some compatible sound cards, to allow simultaneous listening and sound output. Sound card with Automatic Gain Control (AGC) microphone input strongly recommended.



Available on the Internet at [ftp.cica.indiana.edu /pub/pc/win3/sounds](ftp:cica.indiana.edu/pub/pc/win3/sounds) as `applau10.zip` (where '10' is a version number that is subject to change).

### More great programs appearing soon!

We are currently developing more shareware and commercial-ware software applications for Windows 3.1 and Windows 95. For you Internet surfers, a WEB page is available at

<http://www.sagebrush.com/~sells/>

or you can email

[sells@sagebrush.com](mailto:sells@sagebrush.com)

to request for more details. Or better yet, register this software and get our latest product catalog and request to be on our e-mail list for new announcements!

# MouSing v1.x/v2.x Registration form

Mail to:

Sagebrush Systems  
P.O. Box 3094  
Corrales, NM 87048

\_\_\_\_\_  
Name

\_\_\_\_\_  
Address

\_\_\_\_\_  
City, State ZIP Country

\_\_\_\_\_  
Phone Number Internet Address

Where did you obtain your copy of this program? (Please be specific, so we can insure all our distribution sources have the latest version.)

\_\_\_\_\_  
\_\_\_\_\_ Yes, please notify me of major new releases. (Check if applicable.)

We will send BOTH the Win31 and Win95 versions, at no extra charge, unless you indicate below:

- \_\_\_\_\_ Send only Win95 version
- \_\_\_\_\_ Send only Win31 version

Check media type:

- \_\_\_\_\_ 3.5" double density floppy
- \_\_\_\_\_ 5 1/4" double-sided double density floppy
- \_\_\_\_\_ e-mail uuencoded file (You must have uuencode, pkunzip.)

Mark payment type:

- \_\_\_\_\_ Check (drawn on a U.S. bank in U.S. funds)
- \_\_\_\_\_ American Express money order in U.S. funds
- \_\_\_\_\_ International Postal Money Order in U.S. currency  
(available at post offices world-wide)

\_\_\_\_\_ x \$15.00 \$\_\_\_\_\_

NM residents add \$.92 gross receipts tax \$\_\_\_\_\_

Outside N. America please add \$2.00 shipping \$\_\_\_\_\_

TOTAL  
\$\_\_\_\_\_



On the back of this form, please feel free to write down any comments, suggestions for improvements, bug reports, kudos, and questions.

**Thank you for your order!!!!!!!!!!**

## Getting Started

<Getting Started>

## License agreement

<License>

**More Cool Stuff...**  
<More Neat Stuff...>

**More Neat Stuff...**  
<More Neat Stuff...>

**Registration form**  
<Registration form>

**Troubleshooting**  
<Troubleshooting>





