

Olaf Heß (engl.: **Olaf Hess**)  
Waldhornstrasse 19  
D - 82 110 Germering  
Germany

CompuServe: 100 031, 35 36

**Pmlcons** copyright © 1993 by Olaf Heß

**Program Manager Icons (Pmlcons):**

Program Manager Icons lets you assign icons to all the group windows in the Windows 3.1 Program Manager. This helps to distinguish between the different groups and is much more fun than using the normal, boring icons.

To install Pmlcons copy the file PMICONS.EXE to your harddisk. Once running Pmlcons will create a file PMICONS.DAT to store information in this file.

To start Pmlcons simply call the program (to automate this consider running PMICONS.EXE from your autostart group). If you start it with any parameter the program will not display the *About...* box.

Pmlcons changes the looks of the normal group window icon:



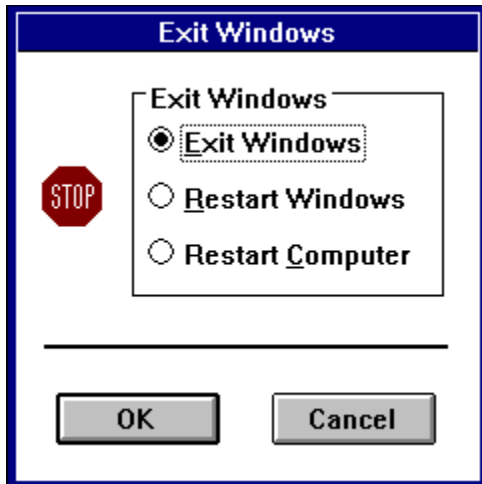
This indicates that Pmlcons is running. To assign an icon of your choice to a group window select the **Group Icon** menu entry from Program Manager's **File** menu. A dialog box will pop up that's similar to the *Change Icon* dialog box that you can call from Program Manager's *Program Item Properties* dialog box. Here you can select the file that you want to load the icon from and the icon that you want to assign to the group window.

That's all it takes to assign an icon of your choice to a Program Manager group window. If you exit Windows and start it up again Pmlcons will remember what icons you'd assigned to the group windows.

Pmlcons adds a menu entry *Save Settings Now* to Program Manager's *Options* menu. This menu entry allows the user to immediately save the current Program Manager settings like the window layout and the window order.

One hint: You can use an undocumented feature both in the Windows 3.1 Program Manager and in the Windows 3.1 File Manager to save the current settings without having to exit the program: Hold one of the [Shift]-keys down and double click in the upper left corner of the program's window (as if you were to close the program) or select *Exit* from the file or *Close* from the system menu (remember to keep the shift-key pressed during the whole procedure). This will force the program to immediately save its current settings.

If you want to exit Windows you will see a new *Exit* dialog. It gives you the choice apart from leaving Windows to restart Windows or to reboot your PC:



If you have any problems with the software or if you encounter bugs please contact me (CompuServe preferred).

#### **ETC:**

This program is neither FREE- nor SHAREWARE. I regard it as being **CAREWARE**. If you like it and want to use it that's fine. You don't have to pay anything to me and the program won't bother you with any nag screens or reminders to pay some money to me or anything.

**CAREWARE:** This program is CAREWARE, meaning that if you like it please donate some Dollars or Pound or Mark or whatever currency to people in need of money to enable them to live as human beings. After all, if you have the financial resources to use CompuServe or a Shareware dealer to get this program you might also have some money left for people who really need it (did you really need this piece of software?).

Writing software takes a lot of time, effort, and money. Please respect this. (Apart from that it's really fun!)

Pmlcons was written using Borland Pascal 7.0, from my point of view the best tool for this job. If you would like the source code (fully commented in German) please send me a CompuServe mail to my CompuServe account 100 031, 35 36 or to my address given above (CompuServe preferred) and we can discuss the details (I basically want to cover my expenses for postage and packing).

There is a German version of Pmlcons as well. If you're interested please send me a CIS mail and I send you the version with German menus etc.

This software is copyright © 1993 by Olaf Hess. Pmlcons may be used and distributed freely, subject to the condition that no charge is made (a small fee for media and handling is permissible). Distribution with the intend of mass production requires the written permission of the copyright holder.

And now, to keep the lawyers (and me) happy:

#### **Disclaimer:**

THE INFORMATION AND CODE PROVIDED HEREUNDER (COLLECTIVELY REFERRED TO AS "SOFTWARE") IS PROVIDED AS IS WITHOUT WARRANTY OF ANY KIND, EITHER

EXPRESS OR IMPLIED, INCLUDING BUT NOT LIMITED TO THE IMPLIED WARRANTIES OF MERCHANTABILITY AND FITNESS FOR A PARTICULAR PURPOSE. IN NO EVENT SHALL OLAF HESS OR HIS SUPPLIERS BE LIABLE FOR ANY DAMAGES WHATSOEVER INCLUDING DIRECT, INDIRECT, INCIDENTAL, CONSEQUENTIAL, LOSS OF BUSINESS PROFITS OR SPECIAL DAMAGES, EVEN IF OLAF HESS OR HIS SUPPLIERS HAVE BEEN ADVISED OF THE POSSIBILITY OF SUCH DAMAGES. SOME STATES DO NOT ALLOW THE EXCLUSION OR LIMITATION OF LIABILITY FOR CONSEQUENTIAL OR INCIDENTAL DAMAGES SO THE FOREGOING LIMITATION MAY NOT APPLY.