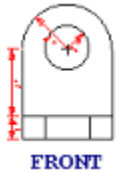
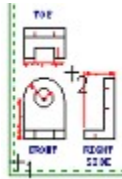


View

The commands on the *View* menu allow you to zoom in and zoom out on your drawing. They also allow you to pan left, right, up and down. Choose the *File/Open* command and select the file *sample.gc1*. Choose the *View/Zoom window* command and pick positions 1 and 2 in the figure below, for the corners of the zoom window. The program will zoom in on the selected area. The entire area you selected is displayed as large as possible, as in the second figure.



Next page >>

View

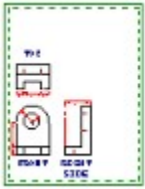
Choose the *View/Zoom previous* command and the previous view is restored. The last 10 views are saved and can be restored.

Choose the *View/Zoom extents* command. The program will zoom the drawing so it is displayed as large as possible in the drawing area. If you have drawing elements which extend beyond the edge of the current drawing area, selecting the *Zoom extents* command will change the view so all the elements are visible.

Next page >>

View

Choose the *View/Zoom page* command. The drawing is zoomed so the entire page is displayed as large as possible, as in the figure below.



Next page >>

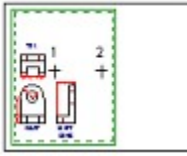
View

The *View/Zoom page and extents* command combines the *Zoom page* and *Zoom extents* commands. The entire drawing and the page are displayed as large as possible in the drawing area. This can be useful for positioning the drawing on the page, if your drawing currently extends beyond the page boundaries. Positioning the drawing on the page is described in more detail in a later tutorial. For this drawing, the *Zoom page* and *Zoom page and extents* commands produce the same result, since the drawing is entirely within the page.

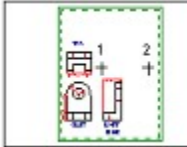
Next page >>

View

Choose the *View/Pan* command and select positions 1 and 2, in the figure below, for the pan displacement points.



The drawing will be panned to the right by the input amount and look similar to the figure below.



Next page >>

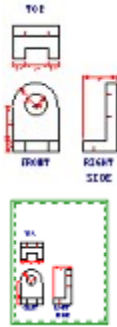
View

The *View/Redraw* command simply redraws the drawing without changing the view. This can be used to clean up the drawing area after editing.

This ends this tutorial.

View

Your view of the drawing should now look similar to the first figure below. Select the *View/Zoom factor* command and enter a zoom factor of "0.5". The view is zoomed out so the drawing appears to be half of its previous size, as in the second figure. The center of the previous view remains in the center of the new view.



Next page >>

View

Choose the *Zoom factor* command and enter a value of "2." The view is zoomed in so it appears to be twice as large as before, or the same size as when we started. The view commands do not change the dimensions of the drawing, they just change your view of the drawing. It is similar to zooming in and out with a camera. When you zoom in, objects appear larger. When you zoom out, objects appear smaller. Of course, the actual size of the objects do not change. You can think of the drawing area as your view finder.

Next page >>

