



NINTENDO DS™

Professor Layton Confronts the Puzzling Mysteries of Time Travel

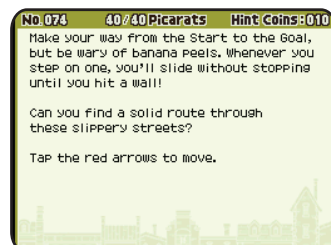
Professor Layton and his apprentice, Luke, receive a confounding letter – from Luke 10 years in the future. But the message inside is even more troubling: London of the future is in disarray, and the only person who can help set things right is Professor Layton.

FEATURES:

- More than 165 new puzzles weave seamlessly into the storyline. Players will be challenged with fun, brain-teasing logic puzzles and riddles, and even new types of puzzles.
- This game features significantly more hand-drawn animated sequences and voice acting than the previous installment of the series.
- Players who are still stumped with a puzzle after three subtle hints can select the new “superhint” option to point them toward a solution.
- As with previous incarnations of the franchise, weekly downloadable puzzles* will be available after launch for a limited time.

Press Contact:

Eileen Tanner, GolinHarris
509-628-1993
etanner@golinharris.com



Platform: Nintendo DS Family	Release: Sept. 20, 2010
Genre: Puzzle Adventure	Developer: LEVEL-5
Players: 1	URL: www.nintendo.com
Rating: RP (Rating Pending)	Suggested Retail Price: \$29.99

*Wireless broadband Internet access required for online features.

