

# *NIS AMERICA*

PROJECT NUMBER 20



## **DISGAEA DS**

Information Package

By Jack Niida



# DISGAEA DS

NIS AMERICA  
PLATFORM. NINTENDO DS  
GENRE. SRPG  
PLAYER. 2 PLAYERS  
DEVELOPED BY NIS

## TABLE OF CONTENTS

### WHAT'S NEW

MULTI PLAYER	1
MULTI CUSTOMIZATION	1
GEO CUBES	2
SHOP	2
NEW STORY	3
GUEST APPEARANCES	3
MUSIC SHOP	3

### THE BASICS

FLOW OF THE GAME	4
BASIC BATTLE SYSTEM	5
CHARACTERS	6
STORY	7



# WHAT'S NEW!?

INNOVATIONS THAT CANNOT BE MISSED

## 01 MULTI PLAYER

YOU CAN FINALLY  
BATTLE YOUR BUDDIES!

The wait is finally over, we'll finally know who is the best strategist! With the all-new duel system developed specially for the US fans, Disgaea returns with a bang.

## 02 MULTI CUSTOMIZATION

CUSTOMIZATION FOR MULTI PLAYER MODE

If you thought customization is only for characters and weapons, then think again. With Disgaea DS you can even customize the multi player mode. Changes can be made to the game rules, field conditions, win/loss conditions, and many more. You'll never again be bored with the same old battle situations!

### Battle Options:

#### 1. Win/Loss condition

- Destroy all
- Defeat leader
- Throw in the flag (Similar to capture the flag)

#### 2. Level select

- Automatically adjusts character levels
- Weapons and items are not affected

#### 3. Map select

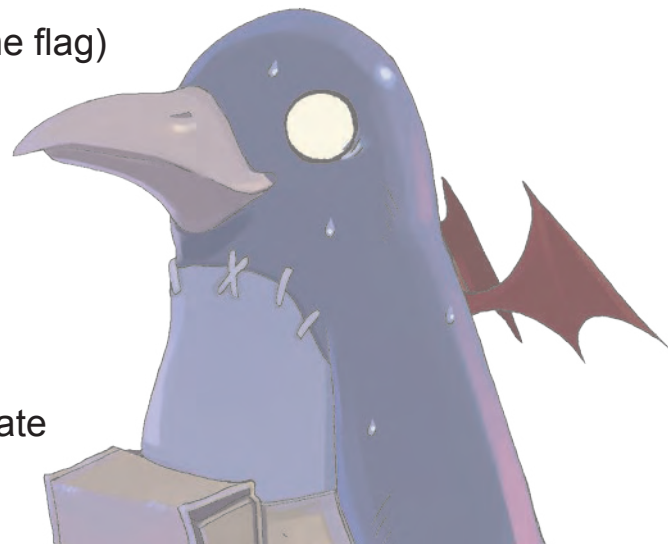
- Choose from a list of 10 duel maps or randomly create a new map

#### 4. Item ON/OFF

- Enable this feature to randomly generate items on the field map

#### 5. Visibility ON/OFF

- Enabling this feature will turn on a "fog" effect that will limit your unit's visible range.



## 03 GEO CUBES

### OUTWIT YOUR OPPONENT

The word strategy takes on a new meaning with geo cubes. By enabling this feature you select 10 geo cubes that have special effects like level up, stop enemy movement, gain the ultimate weapon, and etc. Then from the 10 you chose, 5 are randomly dealt to you and the same for your opponent. You can see the 10 cubes your oppoent selected, but you do not know which 5 they gained.

#### How to use Geo Cubes

Using the geo cubes is simple. Every turn you are given a point of mana power. Once you gain enough points to execute your cube, you may do so anytime during your battle phase.

*Different cubes have different point values, so watch out.*

#### How many Geo Cubes are there?

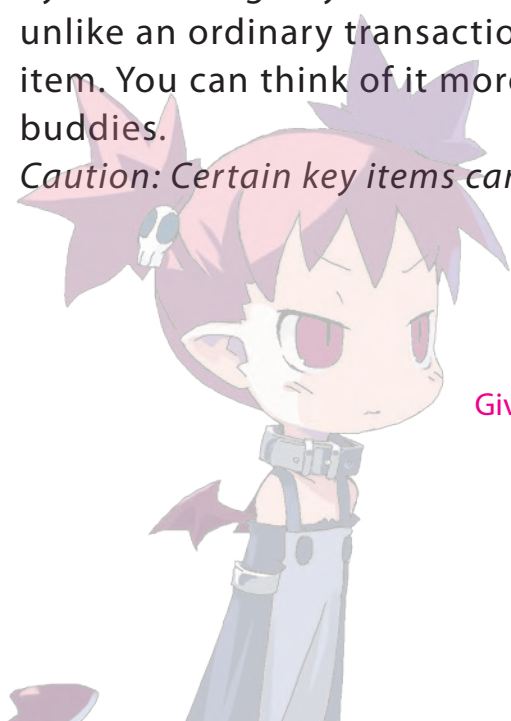
There are over 30 different Geo cubes to choose from. By effectively combining the Geo Cubes with the type of units you have, you can even defeat a LV9999 opponent with a LV1 unit.

## 04 SHOP WITH WIRELESS

### BUY & SELL ITEMS WITH YOUR FRIENDS

By connecting to your friend's DS you can buy or sell your items. However, unlike an ordinary transaction the seller will not gain money or lose their item. You can think of it more as a way to share your item data with your buddies.

*Caution: Certain key items cannot be sold or bought.*



Give me all your items!



Dood....



## 05 NEW STORY

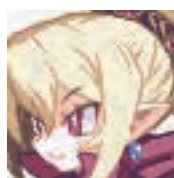
A WHOLE NEW CHAPTER ADDED

Exclusively for the Disgaea DS, a whole new story mode dedicated to Etna has been added. In this mode you will play as Etna and try to become Beauty Queen Ultimate Overlord Etna. If you are able to defeat the game in this mode, an exclusive ending awaits the player.

## 06 GUEST APPEARANCES

YOU NEVER KNOW WHO YOU'LL RUN INTO

Part of the fun of NIS games is unlocking hidden characters. In Disgaea DS, you will see familiar faces from a number of previous titles.



## 07 MUSIC SHOP

BUY YOUR FAVORITE TRACK  
AND PLAY IT IN BATTLE

At Laharl's castle there is a hidden music shop where you can purchase soundtracks and play them in the item world as background music.



# THE BASICS

## FUNDAMENTALS OF DISGAEA

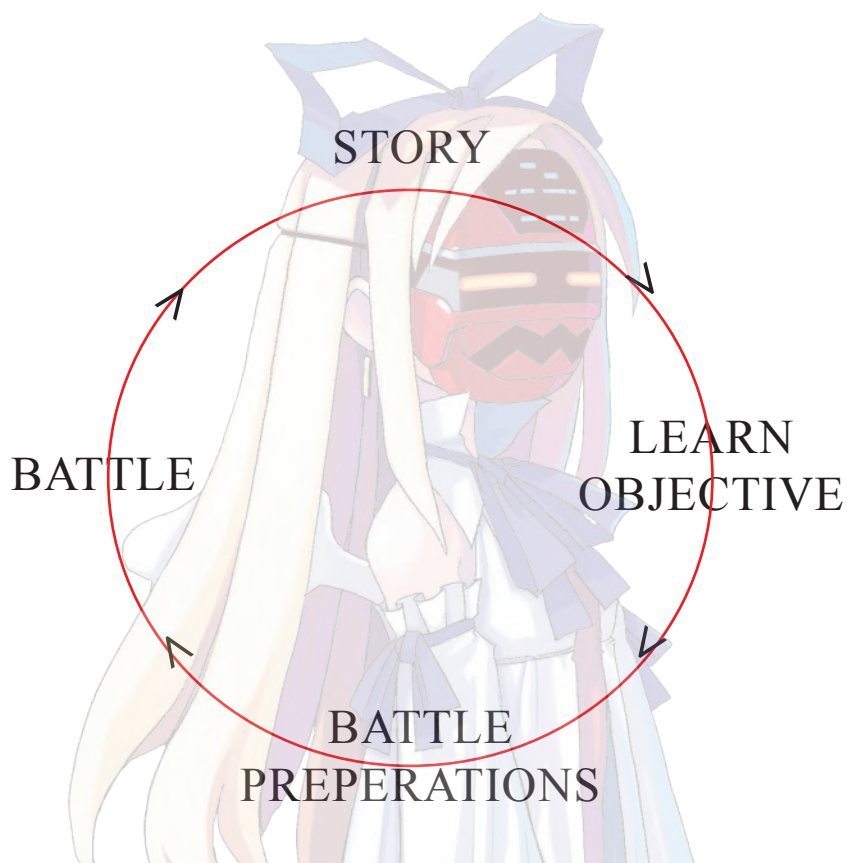
GAME SYSTEM

BASIC SYSTEM

01

### FLOW OF THE GAME

The basic flow of the game is kept simple. You open the game with the story that sets the setting. Once you learn your objective you will prepare for battle and fight the enemy.



## BASIC BATTLE SYSTEM

Battles will take place on a grid based field map. Your units will be dispatched and controlled on your battle phase. Once you finish all of your actions, you will end your turn and it becomes the enemy's turn.





## Prince Laharl

King Krichevskoy's only son. Self-centered to the extreme, his ambition is to become the king of the Netherworld. He cannot stand hearing words like "love" and "kindness".

## Etna

Laharl's vassal. Although she seems to serve Laharl faithfully, she has her own secret agenda. She reveres the late King Krichevskoy.



## Flonne

An Angel Trainee who is sent to the Netherworld to assassinate King Krichevskoy (only to find out that he was already deceased). She believes in love so much that Laharl calls her a "Love Freak".





## PRINCE OF DARKNESS RETURNS



### FAITH AND TRUST

**T**he Netherworld - a place darker than a pitch-black cave, located deeper than the depths of the seas. It is a cursed land where evil reigns and foul beings dwell. Nobody knows its whereabouts, but everybody fears its existence...

The story takes place two years after the death of King Krichevskoy, the ruler of the Netherworld. His son Laharl slept for two full years, unaware of his father's death, while demons fought for supremacy over the Netherworld. With the help of his vassal Etna and her underlings, the egocentric, megalomaniac Prince Laharl fights his way to become the next king.