

WINDOWS LPR SPOOLER FOR WIN95

About Windows LPR Spooler:

Windows LPR Spooler is a program which allows transparent printing from Microsoft Windows 3.1, Windows 95, and Windows NT applications to network printers. WLPRSP.L allows you to define a large number of remote printers which may be addressed through different Protocol DLLs.

Protocol Libraries:

WLPR2.DLL which implements the *Line Printer Daemon (LPD, RFC1179)* protocol that is widely used on UNIX hosts.

WJETDIR.DLL which allows printing to HP LaserJet printers or other network printers that accept print jobs being sent to a specific TCP port.

How the Spooler Works:

WLPRSP.L uses a dedicated directory on the PC's hard disk for spooling (i.e. C:\SPOOL). This directory has to be specified the first time you start the program.

Installing Microsoft TCP/IP protocol:

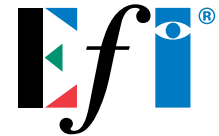
After installing the Microsoft TCP/IP protocol, the following information must be obtained from the Systems Administrator and then used to setup TCP/IP:

- IP Address
- Subnet Mask
- Router Address
- Host Name
- Name Server Address

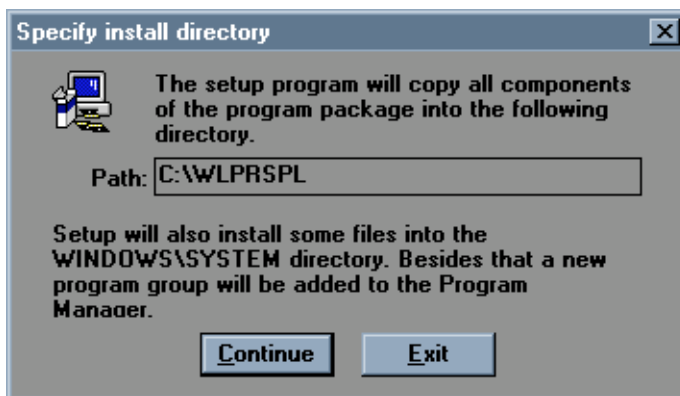
Installing Windows LPR Spooler:

1. Double click on the Windows LPR Spooler Zip icon.

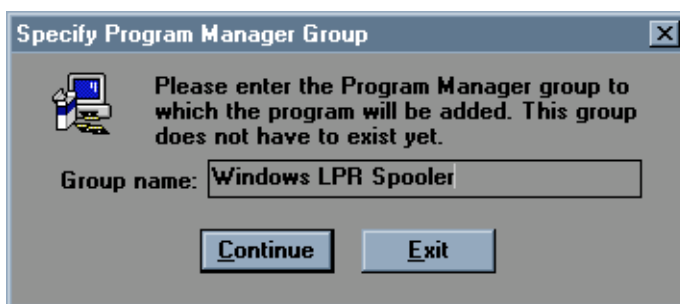




2. A *Welcome to the WinZip Wizard!* dialog box will appear. Select *Next*.
3. A *Click "Next" to prepare to install* dialog box will appear. Select *Next*. You will see a progress indicator bar extracting the installer to a temporary folder.
4. A *Click "Install Now" to run the installation program* dialog box will appear. Select *Install Now*.
5. A *Specify install directory* dialog box will appear. Select *Continue*. This is the directory where WLPRSPL will reside.

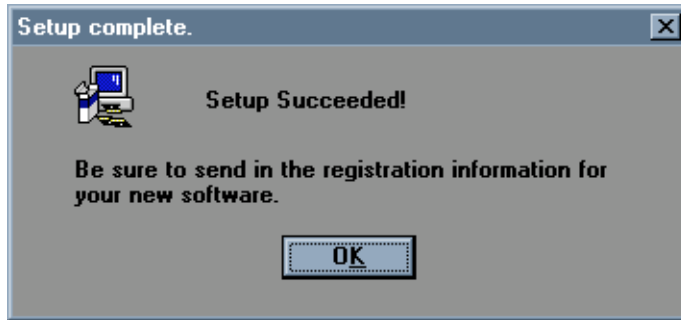


6. A *Do you want the program to be added to its own Program Manager Group?* dialog box will appear. Select *Yes*.
7. A *Specify Program Manager Group* dialog box will appear. Select *Continue*.

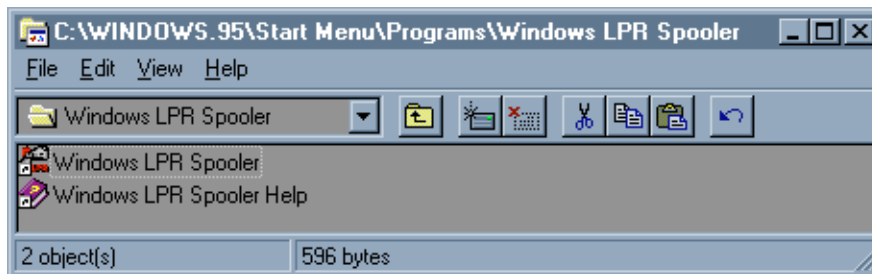


8. A *Do you want the documentation files in PostScript format to be copied to the installation directory* dialog box will appear. Select *No*.
9. A *Do you want the documentation files in ASCII format to be copied to the installation directory* dialog box will appear. Select *Yes*. You will see a progress indicator bar during the installation.

10. A *Setup Complete* dialog box will appear indicating a successful installation. Click *OK*.



11. The Windows LPR Spooler directory will display.

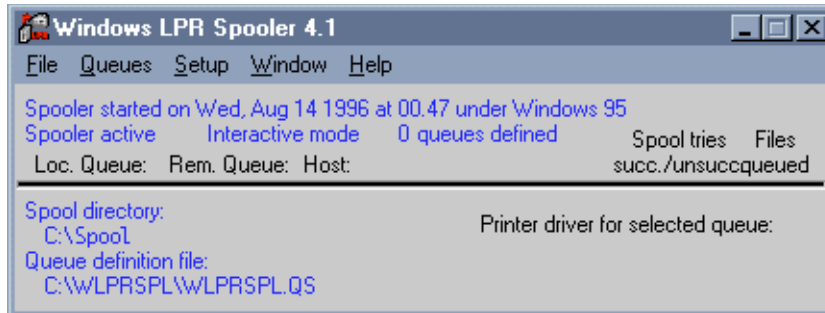


Note: Windows LPR Spooler Help contains detailed information regarding this product.

Windows LPR Spooler Setup:

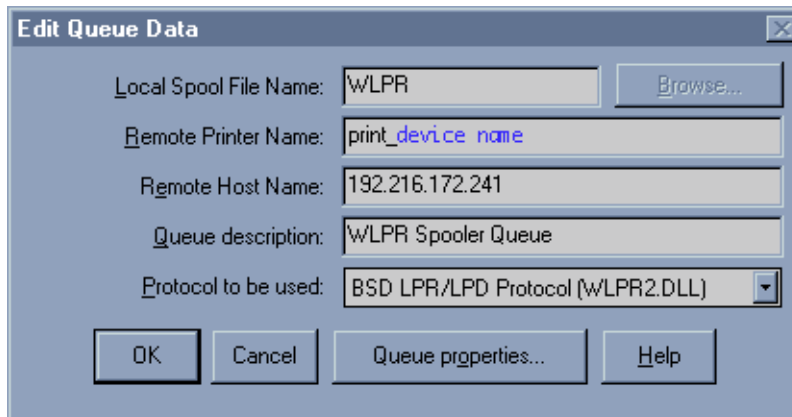
1. Double click on the Windows LPR Spooler icon.
2. A *You have to specify a valid pool directory* dialog box will appear. Click *OK*.
3. A *Select Pool Directory* dialog box will appear. Select an existing directory or create a new directory for job spooling.
4. A *You have to specify a valid queue definition file* dialog box will appear. Click *OK*.
5. A *Load Queue Definition File* dialog box will appear. Click *OK*.

6. The Windows LPR Spooler application will now be active.



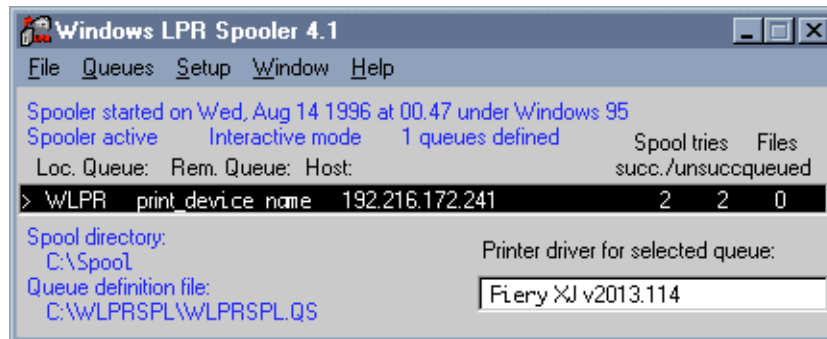
7. Go to *Setup/Queues/Define new queue*.

8. Define the queue and click *OK*.



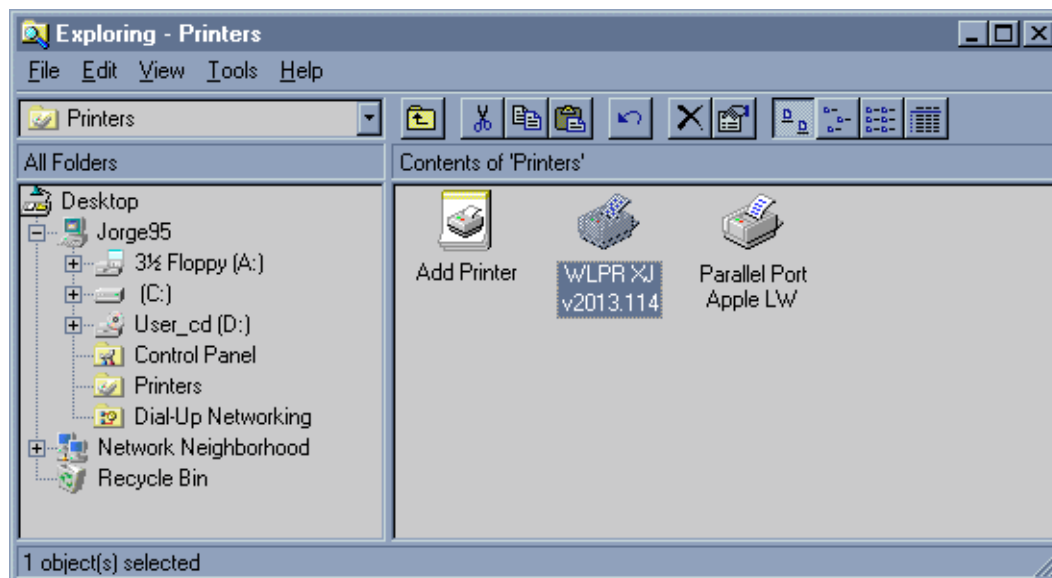
Local Spool File Name:	Any name	
Remote Print Name:	print_device name	(XJ)
	xjprint	(i series)
Remote Host Name:	Fiery IP address	
Queue description:	Any definition	
Protocol to be used:	BSD LPR/LPD Protocol (WLPR2.DLL)	

9. The Windows LPR Spooler application will now display the new queue.

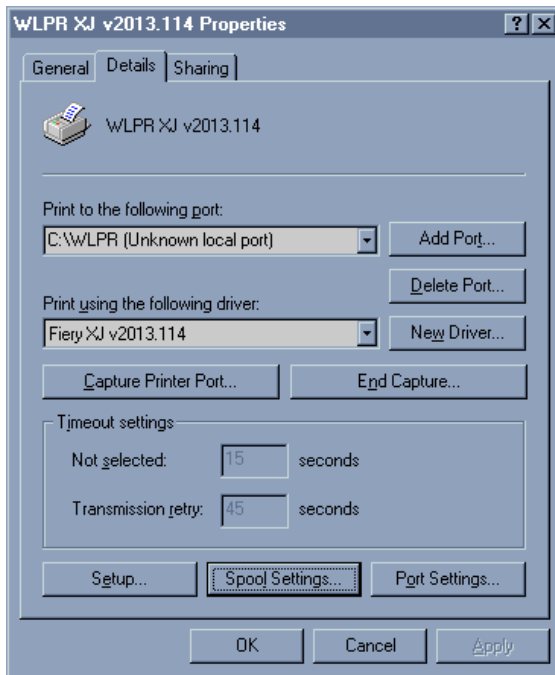


Printer Setup:

1. Go to *Start/Settings/Printers* and *Add Printer*.
2. A *How is this printer attached to your computer?* message will appear. Select *Local printer*.
Note: Under Windows 95 only local printers can be connected to the port that WLPSPML creates.
3. Finish the printer installation. Make sure the correct PPDs are installed.
4. A new printer is created.



5. After installation, go to *Properties* for the printer that was just created. Select *Details*.
6. Setup *Print to the following port* and *Print using the following driver*.



7. Go to the *Printer Properties* and select *PostScript*, and then select *Advanced* and make sure that for *Data Format* you select *Pure binary data*
8. Under *General* select *Print Test Page*. The test page will print indicating a successful installation.

Where Do I Find Windows LPR Spooler?:

Internet: <http://ich210.ich.kfa-juelich.de/wlprspl>

Who supports the Windows LPR Spooler product?:

Susanne Heil EDV-Vertrieb
Hindenburgstr. 50
41352 Korschenbroich, Germany
E-mail: th.heil@kfa-juelich.de