

Cover/Table of Contents

Canon Utilities

- ZoomBrowser EX 5.5
- CameraWindow 5.3
- PhotoRecord 2.2
- RAW Image Task 2.2
- EOS Capture 1.5
- PhotoStitch 3.1
- PTP WIA Driver/PTP TWAIN Driver
- WIA Driver/TWAIN Driver

Compatible Models

- EOS-1D Mark II N
- EOS 5D
- EOS-1Ds Mark II
- EOS 350D DIGITAL
- EOS-1D Mark II
- EOS 20D
- EOS-1Ds
- EOS 300D DIGITAL
- EOS-1D
- EOS 10D
- EOS D60
- EOS D30

Table of Contents

Introduction

-
- 1 Downloading Images from the Camera, and Camera Settings
 - 2 Working with Images in the ZoomBrowser EX
 - 3 Remote Shooting in the EOS Capture
 - 4 Setting the EOS 5D and EOS-1D Series Cameras
 - 5 Troubleshooting and Uninstalling the Software
-

Index

Introduction

Downloading Images from the Camera, and Camera Settings

Working with Images in the ZoomBrowser EX

Remote Shooting in the EOS Capture

Setting the EOS 5D and EOS-1D Series Cameras

Troubleshooting and Uninstalling the Software

Index



Introduction

This chapter includes information on the precautions to be read before using EOS DIGITAL Software, how to use this Instruction Manual, the system requirements and the supported image types. It also explains the software configuration.

About This Manual

Thank you for purchasing this Canon product.

Precautions for using this product safely and icons to help you with procedures, etc. are described at the beginning of this Instruction Manual. Please be sure to read these first before proceeding to the information in the other chapters.

- It is prohibited to reproduce, in whole or part, the contents of this Instruction Manual without permission.
- Canon may change without notice the software specifications and contents of this Instruction Manual.
- The software screens and displays printed in this Instruction Manual may differ slightly from the actual software.
- The content of this Instruction Manual has been reviewed thoroughly. However, if you should notice any errors or omissions, please contact a Canon Service Center.
- Please note that irrespective of the above-mentioned, Canon does not take responsibility for the outcome of the operation of the software.

Safety Precautions

Please read the safety precautions carefully before using this product. Ensure that you use the product correctly according to the procedures described in these instructions. The following safety precautions are intended to instruct you in the safe and correct operation of the product and its accessories to prevent injuries or damage to yourself, other persons and property. Please read and ensure that you understand them before you proceed to the other sections of these instructions.

Warning

Do not play the supplied CD-ROM(s) in any CD-ROM Player that does not support data CD-ROMs. The extremely loud sound that may result from playing the CD-ROM(s) in an audio CD player (music player) could damage the speakers. It is also possible to suffer hearing losses from listening with headphones to the loud sounds of a data CD-ROM played on a music CD player.

Trademark Acknowledgments

- Canon and EOS are trademarks of Canon Inc.
- IBM is a registered trademark of International Business Machines Corporation.
- Microsoft and Windows are registered trademarks or trademarks of Microsoft Corporation in the United States and/or other countries.
- Other names and products not mentioned above may be registered trademarks or trademarks of their respective companies.






- Click on the item to display its page.

Main Features	0-2
System Requirements	0-2
Supported Images	0-2
Software Configuration	0-3

Instruction Manual Notice

- In this manual, Windows XP Professional/Home Edition is referred to as "Windows XP", Windows Millennium Edition is referred to as "Windows Me", Windows 2000 Professional is referred to as "Windows 2000", and Windows 98 Second Edition is referred to as "Windows 98SE".
- In this manual, the screens used in the examples are from Windows XP.
- This manual describes operating methods for the EOS-1D Mark II N or EOS 5D and uses the EOS-1D Mark II N or EOS 5D screens in examples. Supplementary information has been given where necessary about functions that are unique to each camera.
- The camera name is shown in the screens as "EOS XXX".
- In this document, square brackets [] are used to indicate items such as window names, menu names and button names that appear on the computer screen.
- Text inside < > in this document indicates the keys on the keyboard and camera button names.
- Asterisk in (p.*-*) in this document shows reference pages.
- Descriptions of camera operations assume that the reader is familiar with the information in the camera's Instruction Manual.
- For the restrictions that apply to the software products, refer also to the Readme files for the respective products.
- ▶ in this document indicates the sequence of operation as shown on the right.
Example: [View] menu ▶ [Show Information] ▶ [File Name]



- The explanations given below describe the type of content indicated by the respective icons.
 -  : Marks information that should be read before use to prevent problems that would interfere with the functioning of software and computer.
 -  : Marks additional information that you will find helpful.
- Click any of the chapter content buttons at the right of the Instruction Manual to display the front page of each chapter.
- Clicking the buttons on the bottom right of the Instruction Manual allows you to move as follows:
 -  : Displays the previous page.
 -  : Displays the next page.
 -  : Returns to the previously displayed page.

Cover/Table of Contents

Introduction

Downloading Images from the Camera, and Camera Settings

Working with Images in the ZoomBrowser EX

Remote Shooting in the EOS Capture

Setting the EOS 5D and EOS-1D Series Cameras

Troubleshooting and Uninstalling the Software

Index



Main Features

EOS DIGITAL Solution Disk contains software with the following features and functions for exclusive use with Canon digital cameras.

ZoomBrowser EX (Image Viewing and Editing Software)

- ZoomBrowser EX is software for viewing and editing images and is designed for a wide range of users who mainly shoot JPEG images.
- Together with each software, you can perform standard workflow (procedure) of downloading, viewing, editing and printing images.
- You can display and view 3 types of image lists, display an individual image in enlarged view, display comparisons of multiple images, or display images as a slide show.
- You can classify images by the date on which they were shot, rename multiple files in a single operation, and select and organize images by setting "Rating" or "Keyword".
- You can search for images using various types of information such as the date on which they were shot or by the "Rating" you have set.
- Various types of image editing are available, including JPEG image editing functions, image rotation, RAW image editing using RAW Image Task, and JPEG image merging using PhotoStitch.
- Together with EOS Capture, you can shoot photos remotely.
- With the image transfer function, you can perform image editing using third-party image editing software.
- You can perform various types of printing to suit your needs such as one-page printing, printing an index of your images, or laying out and printing images using PhotoRecord.
- You can export images for various purposes such as converting and saving JPEG images, exporting for use as a screen saver or wallpaper, or writing to a CD-R/CD-RW.
- You can attach an image to an e-mail and send it.
- You can connect to CANON iMAGE GATEWAY and receive various online services.
- ZoomBrowser EX is compatible with Color Management System.
- ZoomBrowser EX is compatible with 2 types of color space (sRGB, Adobe RGB).

CameraWindow (Software for Communication with the Camera)

- Together with ZoomBrowser EX, you can download to your computer images saved on the memory card inside your camera and perform various settings for your camera.
- You can download in a single operation multiple images saved on the memory card inside your camera, display a list of images, and download only selected images.
- CameraWindow is also compatible with image download using a third-party card reader.
- With the EOS-1D Mark II N and EOS 5D, you can set in the camera a Picture Style file saved on your computer. Also, with the EOS-1D series cameras, you can register Personal Functions and various shot settings in the camera.
- Together with EOS Capture, you can shoot photos remotely.

RAW Image Task (RAW Image Processing Software)

- Together with ZoomBrowser EX, you can process and display RAW images, and set and change processing parameters.
- With the high image quality processing and the camera-faithful algorithm of Canon's genuine software, you can process RAW images in the same colors as the camera.
- You can set the same processing parameters as the camera or change the conditions. Also, there is hardly any image deterioration after changing the processing parameters.
- You can convert or save a RAW image as a TIFF or JPEG image, and attach an ICC profile.
- RAW Image Task is compatible with Color Management System.
- RAW Image Task is compatible with 2 types of color space (sRGB, Adobe RGB).

EOS Capture (Remote Shooting Software)

- Together with CameraWindow and ZoomBrowser EX, you can shoot photos remotely where the camera is controlled from your computer.
- You can shoot and set various settings by controlling the camera from your computer.
- EOS Capture can also be used for shooting with the camera's shutter button.

PhotoRecord (Layout Printing Software)

- Together with ZoomBrowser EX, you can lay out and print images freely.
- You can adjust the placement and size of images, select frames, add text, etc. and print.

PhotoStitch (Image Merging Software)

- Together with ZoomBrowser EX, you can create panorama images, etc. by merging multiple JPEG images.

System Requirements

OS	Windows XP (Professional/Home Edition), Windows Me, Windows 2000, Windows 98SE	
Computer	Computer with one of the above OS preinstalled and a USB port as a standard feature or an OHCI-compliant IEEE1394 port. * Upgraded machines not supported.	
CPU	500MHz Pentium or higher	
RAM	Windows XP, Windows 2000	Minimum 256MB
	Windows Me, Windows 98SE	Minimum 128MB
Interface	USB 1.1 to 2.0 Hi-Speed, IEEE1394	
Hard disk space	ZoomBrowser EX, CameraWindow, PhotoRecord, RAW Image Task	250MB or more
	EOS Capture	300MB or more
	PhotoStitch	40MB or more
	PTP WIA Driver/PTP TWAIN Driver WIA Driver/TWAIN Driver	50MB or more
Display	Screen resolution: 1024 × 768 pixels or more Color quality: Medium (16 bit) or more	

Supported Images

This software supports the following image types.

Image type/ Camera used		Extension
JPEG images	Exif 2.2 or 2.21-compatible JPEG or JFIF images	.JPG, .JPEG
RAW images	EOS-1D Mark II N, EOS-1Ds Mark II, EOS-1D Mark II, EOS 5D, EOS 350D DIGITAL or EOS 20D	.CR2
	EOS-1Ds, EOS-1D	.TIF
	EOS 300D DIGITAL, EOS 10D, EOS D60 or EOS D30	.CRW
BMP images	Bitmap images	.BMP
TIFF images	Exif-compatible TIFF images	.TIF, .TIFF
PCD images	Kodak Photo CD images	.PCD

Cover/Table of Contents

Introduction

Downloading Images from the Camera, and Camera Settings

Working with Images in the ZoomBrowser EX

Remote Shooting in the EOS Capture

Setting the EOS 5D and EOS-1D Series Cameras

Troubleshooting and Uninstalling the Software

Index

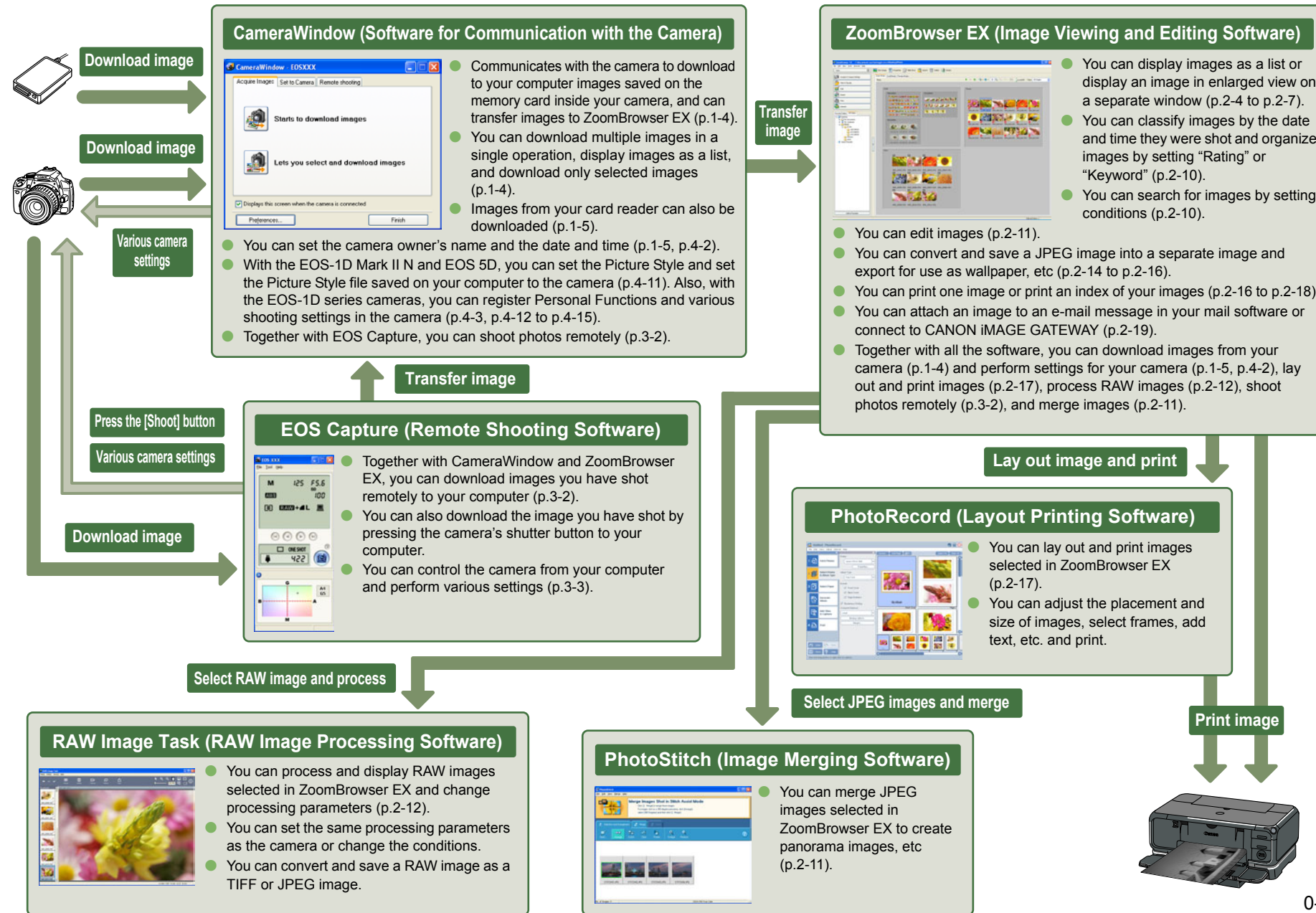


Software Configuration

The software on the EOS DIGITAL Solution Disk operates together with the software shown below, centering on ZoomBrowser EX.

➡ : Shows the shot image flow.

⬅ : Shows the camera control information from the software.



Cover/Table of Contents

Introduction

1 Downloading Images from the Camera, and Camera Settings

2 Working with Images in the ZoomBrowser EX

3 Remote Shooting in the EOS Capture

4 Setting the EOS 5D and EOS-1D Series Cameras

5 Troubleshooting and Uninstalling the Software

Index



1 Downloading Images from the Camera, and Camera Settings

This chapter explains how to set up communication mode, how to connect the camera or a card reader (third-party product) to your computer, how to download images, and explains camera settings, etc. For EOS 5D and EOS-1D series camera settings, refer to Chapter 4.

For more information on the restrictions of the CameraWindow, refer also to the source listed below.

Readme: Click the [Start] button ► select [All Programs] ([Programs] in versions other than Windows XP) ► [Canon Utilities] ► [CameraWindow] ► [CameraWindow MC 5 Readme], and the [Readme] file in the folder with your camera name.

- Click on the item to display its page.

Connecting the Camera to Your Computer	1-2
Downloading Images from Your Camera	1-4
Downloading All the Images in a Single Operation	1-4
Downloading Selected Images	1-4
Camera Settings	1-5
Downloading Images Using Your Card Reader	1-5
Downloading JPEG Images Using the PTP Function	1-6

Setting the Communication Mode

You can set the camera's communication mode to [PC connect.], [PC connection] or [Normal].

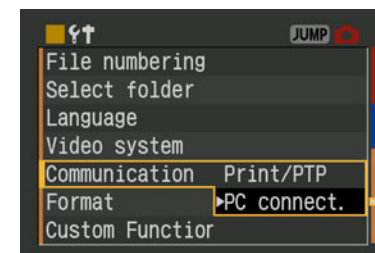
- The settings on this page are only necessary for the EOS 5D, EOS 350D DIGITAL, EOS 20D, EOS 300D DIGITAL and EOS 10D.
- With the EOS 10D, you must change the firmware to version 2.0.0 or later. For details on changing, refer to the Canon web site.

1 Check that the camera is not connected to the computer and then set the camera's power switch to <ON>.

2 Set the camera's communication mode to [PC connect.], [PC connection] or [Normal].

- With the EOS 5D, set [**⏏** Communication] in menu to [PC connect.].
- With the EOS 350D DIGITAL, set [Communication] in menu option [**⏏2**] to [PC connection].
- With the EOS 20D and EOS 10D, set [Communication] in menu to [Normal].
- With the EOS 300D DIGITAL, set [Communication] in menu option [**⏏2**] to [Normal].

Operation window in the EOS 5D



3 Press the <MENU> button to switch the LCD monitor display off and then set the camera's power switch to <OFF>.

- When setting the communication mode, always ensure that the camera is not connected to the computer beforehand. Setting the communication mode while the camera is connected to the computer will cause camera and software malfunctions.
- When using the EOS 5D or EOS 350D DIGITAL, EOS Capture cannot be used if the camera's communication mode is set to [Print/PTP].
- When using the EOS 20D, EOS 300D DIGITAL or EOS 10D, the camera and the software in the Solution Disk cannot communicate if the camera's communication mode is set to [PTP].

About the PTP Setting

You can download JPEG images that use the PTP (Picture Transfer Protocol) function in Windows XP, when the camera's communication mode is set to [Print/PTP] or [PTP] (p.1-6).

Cover/Table of Contents

Introduction

Downloading Images from the Camera, and Camera Settings

Working with Images in the ZoomBrowser EX

Remote Shooting in the EOS Capture

Setting the EOS 5D and EOS-1D Series Cameras

Troubleshooting and Uninstalling the Software

Index



Connecting the Camera to Your Computer

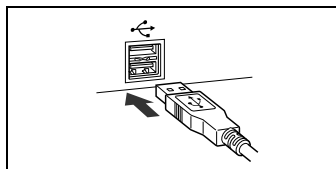
■ Connection Procedure for Cameras other than the EOS-1D Series Cameras

(EOS 5D and EOS 350D DIGITAL etc.)

Before downloading images to your computer or specifying the camera settings, you must connect the camera to your computer with the interface cable supplied with the camera. You can connect the camera while your computer is running.

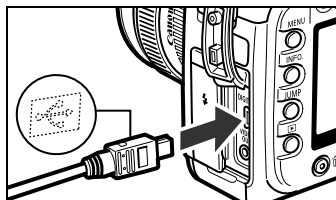
1 Plug the dedicated cable into the computer.

- Plug the cable into the USB port.
- Refer to the computer User's Manual for information on the terminal areas.

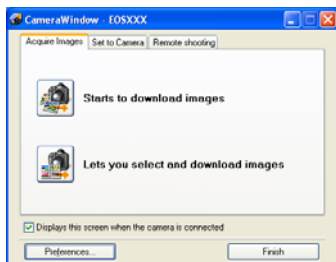
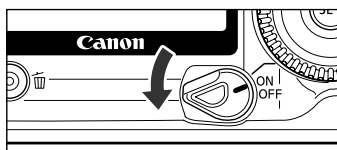


2 Plug the dedicated cable into your camera.

- Face the <↔> mark on the plug to the front of the camera and connect the plug to the camera's <DIGITAL> terminal.
- With the EOS D60 and EOS D30, connect by aligning the <▶> mark on the plug with the <▶> mark on the <DIGITAL> terminal.



3 Set the camera's power switch to <ON>.



→ [CameraWindow] appears, the camera is ready to communicate with your computer. Proceed to "Downloading Images from Your Camera" (p.1-4) continuously.

- If the dialog box on the right appears, select [Canon CameraWindow] and then click the [OK] button to display [CameraWindow].
- If [CameraWindow] does not appear, click the [Start] button ► select [All Programs] ([Programs] in versions other than Windows XP) ► [Canon Utilities] ► [CameraWindow] ► [CameraWindow].



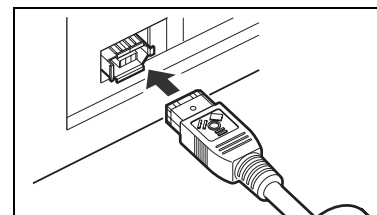
■ Connection Procedure for EOS-1D Series Cameras

(EOS-1D Mark II N and EOS-1Ds Mark II etc.)

Before downloading images to your computer or specifying the camera settings, you must connect the camera to your computer with the dedicated IEEE1394 interface cable supplied with the camera. You can connect the camera while your computer is running.

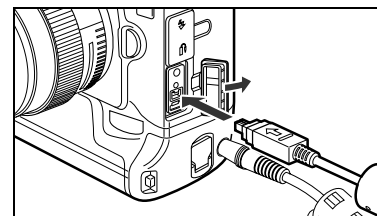
1 Plug the dedicated cable into the computer.

- Plug the cable into the IEEE1394 port. Confirm that the shape of the plug and the shape of the IEEE1394 port match, and then connect correctly.
- Refer to the computer User's Manual for information on the terminal areas.
- When using the dedicated cable supplied with the EOS-1Ds and EOS-1D, either plug (6-pin type) can be connected.

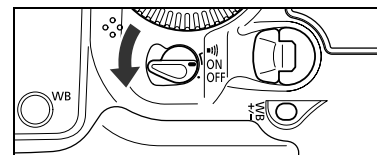


2 Plug the dedicated cable into your camera.

- For the EOS-1D Mark II N, attach the cable protector supplied with the camera, and then connect the dedicated cable following the steps below.
- Make sure the <↔> mark on the plug is facing the top of the camera and then connect the plug to the camera's <DIGITAL> terminal.
- When using the dedicated cable supplied with the EOS-1Ds and EOS-1D, either plug (6-pin type) can be connected. Confirm that the shape of the plug and the shape of the camera's <DIGITAL> terminal match, and then connect correctly.



3 Set the camera's power switch to <ON>.



4 Start CameraWindow.

- Click the [Start] button and select [All Programs] ([Programs] in versions other than Windows XP) ► [Canon Utilities] ► [CameraWindow] ► [CameraWindow].
- [CameraWindow] appears, the camera is ready to communicate with your computer. Proceed to "Downloading Images from Your Camera" (p.1-4) continuously.
- When the camera selection window appears, select the connected camera and then [CameraWindow] will be displayed.

Cover/Table of Contents

Introduction

Downloading Images from the Camera, and Camera Settings

Working with Images in the ZoomBrowser EX

Remote Shooting in the EOS Capture

Setting the EOS 5D and EOS-1D Series Cameras

Troubleshooting and Uninstalling the Software

Index



- Never perform the following operations while the software installed from the Solution Disk is running after connecting the camera to the computer as a communications error may occur.
 - Set the camera's power switch to <OFF>.
 - Open the CF card slot cover.
 - Disconnect the dedicated cable, remove the battery, or remove the AC Adapter Kit (optional), DC Coupler or DC Coupler Kit.
 - Disconnect the plug and the power cord of the AC Adapter Kit (optional), DC Coupler or DC Coupler Kit.

Before you perform the operations above, be sure to exit all the software.

- You cannot communicate with the camera when you are displaying images through the camera's LCD monitor. Always connect the camera and your computer after turning off the display in the LCD monitor.
- While the camera and your computer are communicating, the camera's LCD panel may blink.
- Use only the dedicated cable.
- With EOS-1D series cameras, if you connect the plug of the dedicated cable into the computer's IEEE1394 port in the reverse direction, the camera or the computer may break down. Confirm that the shape of the plug and the shape of the IEEE1394 port match before connecting.
- With EOS-1D series cameras, you cannot communicate with CameraWindow even if you connect the USB interface cable supplied with the camera.
- Push the plug firmly all the way into the socket. Loose connections can cause faults or malfunctions.
- Do not connect the camera to your computer via a hub. If you do so, the camera may not operate correctly.
- If you connect multiple USB or IEEE1394 devices (excluding mouse and keyboard) to your computer, the camera may not operate correctly. Disconnect from your computer any USB devices and IEEE1394 connection devices other than the camera.
- Operation of the Auto power off function will automatically switch the camera off, disabling to communicate with your computer. Set the Auto power off function to [OFF] in advance. (Refer to the camera's Instruction Manual.)
- Do not connect more than one camera to the same computer. The connections may not operate correctly.
- The camera cannot communicate correctly with multiple softwares. Use one software to communicate with the camera.
- When unplugging the dedicated cable, be sure to grip the sides of the plug as you pull it out.
 - * If you are using the EOS D60 or EOS D30, pull the plug while pressing the PUSH button on it.
- If you do not perform any operation while the camera and computer are connected, a confirmation message may appear on the computer screen asking whether you wish to continue communicating with the camera for some computer systems. If you do not perform any operation even after this message appears, the communication with the camera is terminated. To re-establish the communication, press the shutter button down halfway or set the camera's power switch to <OFF> and then back to <ON>.

- Do not put your computer to sleep while it is connected to the camera. If your computer goes into the sleep mode, never disconnect the dedicated cable while your computer is still in the sleep mode. Always wake your computer up while it is connected to the camera. On some types of computer, disconnecting the dedicated cable while your computer is in sleep mode could prevent the computer from waking up correctly. Refer to the computer User's Manual for more information on sleep mode.

- When you connect the camera and your computer, it is recommended that you use the AC Adapter Kit (optional) for the EOS 5D, EOS 350D DIGITAL, EOS 20D, EOS 300D DIGITAL, EOS 10D, the DC Coupler supplied with the camera for the EOS D60 and EOS D30, and the DC Coupler Kit supplied with the camera for EOS-1D series cameras.
- When connecting the EOS-1D series camera and a computer with a 4-pin type IEEE1394 port, use the EOS-1D series dedicated Canon interface cable (optional) 4-pin/4-pin type for the EOS-1D Mark II N, EOS-1Ds Mark II and EOS-1D Mark II, and a 4-pin/6-pin type for the EOS-1Ds and EOS-1D.

Cover/Table of Contents

Introduction

1 Downloading Images from the Camera, and Camera Settings

2 Working with Images in the ZoomBrowser EX

3 Remote Shooting in the EOS Capture

4 Setting the EOS 5D and EOS-1D Series Cameras

5 Troubleshooting and Uninstalling the Software

Index



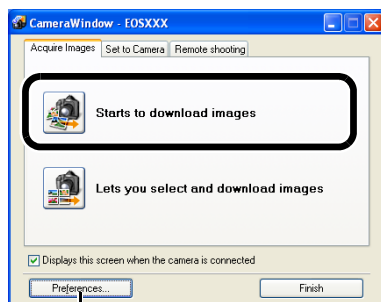
Downloading Images from Your Camera

Downloading All the Images in a Single Operation

You can download to your computer all the images saved on a memory card in the camera, in a single operation. You can follow this same procedure when downloading images using a third-party card reader (p.1-5).

Click the [Starts to download images] button.

- The [Save File] dialog box appears and the images are downloaded to the computer.
- The downloaded images are sorted in folders by shot date, and are saved in the [My Pictures] folder on the computer.
- When all the images have been downloaded, the ZoomBrowser EX starts and the downloaded images are displayed. Continue with the procedures in Chapter 2.



You can set the save destination and image type for downloaded images.

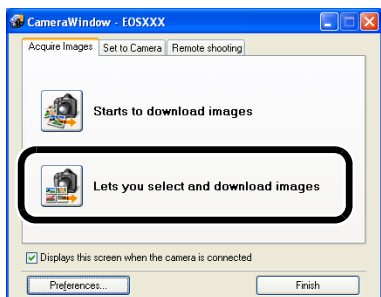
- In the preferences, only images downloaded for the first time are downloaded and saved in the [My Pictures] folder (you cannot download images previously downloaded). You can change the image download type or the save destination in the dialog box that appears when you click the [Preferences] button.

Downloading Selected Images

You can display the images saved on a memory card in the camera, select the images you want and download them to your computer. You can follow this same procedure when downloading images using a third-party card reader (p.1-5).

1 Click the [Lets you select and download images] button.

- The images on the memory card are displayed.



You can select the folder of the image displayed in the window.

You can select images by condition.

Downloads the images to computer.

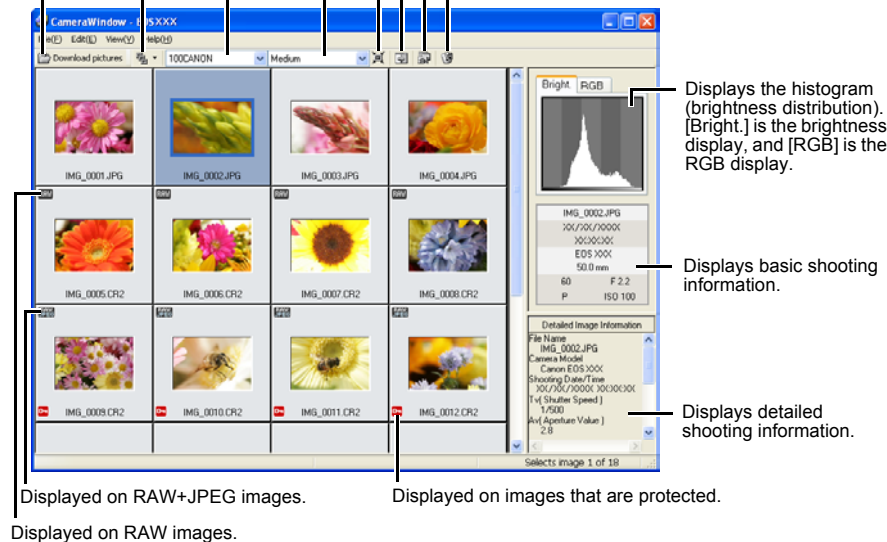
You can select the size of the displayed image.

You can show/hide the image frame.

You can show/hide the image information area.

Starts the ZoomBrowser EX.

Deletes the image.



2 Select the images to download.

- Click the target image.
- To select multiple images, hold down the <Ctrl> key and click the images.
- To select sequential images, click the first image and then hold down the <Shift> key and then click the last image.

3 Click the [Download pictures] button.

- The [Download Image] dialog box appears.

4 Specify the save destination and then click the [Start Download] button.

- The [Save File] dialog box appears and the images are saved in the specified folder.
- When all the images have been downloaded, the ZoomBrowser EX starts and the downloaded images are displayed. Continue with the procedures in Chapter 2.

- [] is displayed on images previously downloaded to your computer.
- [] is displayed on images shot with AEB.
- With the EOS-1D series cameras, a [] is displayed on images with sound recorded.

Cover/Table of Contents

Introduction

Downloading Images from the Camera, and Camera Settings

Working with Images in the ZoomBrowser EX

Remote Shooting in the EOS Capture

Setting the EOS 5D and EOS-1D Series Cameras

Troubleshooting and Uninstalling the Software

Index



Camera Settings

Cameras other than the EOS 5D and EOS-1D Series Cameras

You can perform settings on the camera, such as setting the camera owner's name and setting the date and time.

1 Select the [Set to Camera] tab.

→ The [Set to Camera] tab sheet appears.



2 Click the [Confirms/changes camera settings] button.

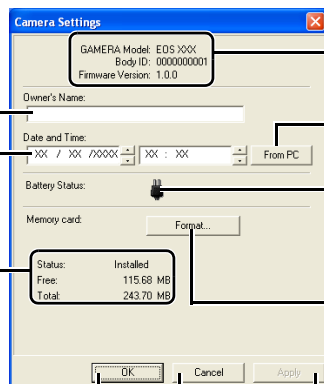
→ The [Camera Settings] dialog box appears.

3 Specify desired settings.

You can enter up to 31 characters.

You can enter a value or click the [▲]/[▼] buttons to set.

Displays the information of the memory card in the camera.



Displays the Information relating to the camera.

You can set the camera to the date and time of your computer.

Displays the camera's battery status. When the AC Adapter Kit (optional) or the DC Coupler is connected, [🔋] is displayed.

Initializes the memory card.

Applies the settings to the camera and closes the dialog box.

Cancels all the settings and closes the dialog box.

Applies the settings to the camera.

4 Click the [OK] button.

→ The settings are applied to the camera.

⚠ Initializing a memory card deletes all the data and the data cannot be recovered. Check carefully before initializing.

EOS 5D and EOS-1D series cameras

For EOS 5D and EOS-1D series camera settings, refer to Chapter 4.

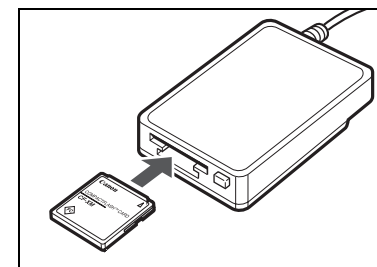
Downloading Images Using Your Card Reader

You can also download images to the computer using a third-party card reader.

1 Load the card into the card reader.

→ The dialog box in step 2 appears.

- If the dialog box in step 2 does not appear, click the [Start] button ► select [All Programs] ([Programs] in versions other than Windows XP) ► [Canon Utilities] ► [CameraWindow] ► [CameraWindow].

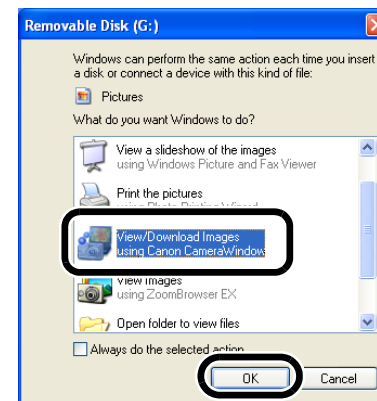


2 Select [View/Download Images using Canon CameraWindow] and then click the [OK] button.

→ [CameraWindow] appears and image downloading preparation is complete.

3 Download the images.

- To continue, you can download images using the same procedure as in "Downloading Images from Your Camera" (p.1-4).



⚠ Depending on the card reader you are using, you may not be able to download images using the [CameraWindow].

- For information on connecting the card reader to your computer, refer to the card reader User's Manual.
- For the functions displayed in the [Set to Memory Card] tab sheet of the [CameraWindow], click each button and refer to the contents of the dialog box displayed or the Help.

Cover/Table of Contents

Introduction

Downloading Images from the Camera, and Camera Settings

Working with Images in the ZoomBrowser EX

Remote Shooting in the EOS Capture

Setting the EOS 5D and EOS-1D Series Cameras

Troubleshooting and Uninstalling the Software

Index



Downloading JPEG Images Using the PTP Function

Cameras other than EOS-1D Series Cameras

(EOS 5D and EOS 350D DIGITAL etc.)

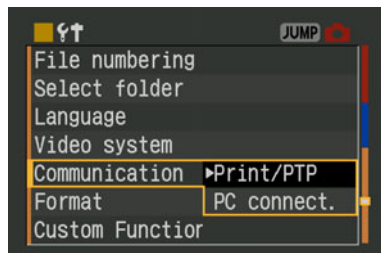
When using Windows XP, you can use the PTP (Picture Transfer Protocol) function. If you set the camera's communication mode to [Print/PTP] or [PTP], you can download JPEG images saved on a memory card in the camera to your computer without having to start the software provided on the Solution Disk.

- This function is compatible with the EOS 5D, EOS 350D DIGITAL, EOS 20D, EOS 300D DIGITAL and EOS 10D only.
- With the EOS 10D, you must change the firmware to version 2.0.0 or later. For details on changing, refer to the Canon web site.

1 Check that the camera and the computer are not connected and then set the camera's power switch to <ON>.

2 Set the camera's communication mode to [Print/PTP] or [PTP].

- With the EOS 5D, set [**⏏** Communication] in menu to [Print/PTP].
- With the EOS 350D DIGITAL, set [Communication] in menu option [**⏏2**] to [Print/PTP].
- With the EOS 20D and EOS 10D, set [Communication] in menu to [PTP].
- With the EOS 300D DIGITAL, set [Communication] in menu option [**⏏2**] to [PTP].



3 Press the <MENU> button to switch the LCD monitor display off and then set the camera's power switch to <OFF>.

4 Connect the camera to the computer and set the camera's power switch to <ON> (p.1-2).

- The window for selecting the software to use for downloading the images is displayed.

5 Select [Microsoft Scanner and Camera Wizard] and click the [OK] button.

- The [Scanner and Camera Wizard] dialog box appears.

6 Download images as directed in the [Scanner and Camera Wizard] dialog box.

EOS-1D Series Cameras

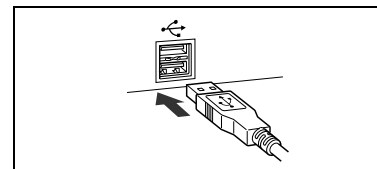
(EOS-1D Mark II N and EOS-1Ds Mark II etc.)

If you are using Windows XP, you can connect the USB interface cable supplied with the camera to the camera's direct print terminal and download to your computer JPEG images saved on the memory card inside your camera using the PTP (Picture Transfer Protocol) function, without having to start the software provided on the Solution Disk.

- If you want to use the PTP function, connect with the USB interface cable supplied with the camera.
- This function is compatible with the EOS-1D Mark II N, EOS-1Ds Mark II, EOS-1D Mark II only.

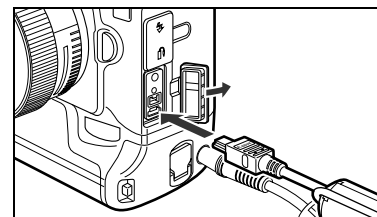
1 Plug the dedicated cable into the computer.

- Plug the cable into the USB port.
- Refer to the computer User's Manual for information on the terminal areas.



2 Plug the dedicated cable into your camera.

- Face the plug's <↔> mark towards the bottom of the camera and then connect the plug to the camera's direct print terminal.



3 Set the camera's power switch to <ON>.

- The window for selecting the software to use for downloading the images is displayed.

4 Select [Microsoft Scanner and Camera Wizard] and click the [OK] button.

- The [Scanner and Camera Wizard] dialog box appears.

5 Download images as directed in the [Scanner and Camera Wizard] dialog box.

Cover/Table of Contents

Introduction

Downloading Images from the Camera, and Camera Settings

Working with Images in the ZoomBrowser EX


Remote Shooting in the EOS Capture

Setting the EOS 5D and EOS-1D Series Cameras

Troubleshooting and Uninstalling the Software

Index



 Due to Windows XP specifications, you may experience the following restrictions with the PTP function. We recommend downloading shot images using CameraWindow (p.1-4).

- RAW images cannot be downloaded.
(Even if RAW images are displayed, they cannot be downloaded.)
- When a memory card in the camera contains both RAW images and JPEG images, you may not be able to download the JPEG images.
- Shooting information for downloaded images may be altered or deleted.
- Images cannot be downloaded if there is a large quantity of images in the camera (approximately 1,000 images).
- It may take several minutes after connecting the camera and your computer until the PTP function is operational.
- Vertically shot images become horizontal when downloaded, or an image does not rotate even if you use the Rotate command.

In addition to the above restrictions, you may not be able to download images correctly depending on your OS version and computer environment.

Cover/Table of Contents

Introduction

1
Downloading Images from the Camera, and Camera Settings

2
Working with Images in the ZoomBrowser EX

3
Remote Shooting in the EOS Capture

4
Setting the EOS 5D and EOS-1D Series Cameras

5
Troubleshooting and Uninstalling the Software

Index



2 Working with Images in the ZoomBrowser EX

This chapter explains functions of the ZoomBrowser EX, such as shot image display, editing, saving, printing and processing RAW images.

For more information on the restrictions of the ZoomBrowser EX and RAW Image Task, refer also to the source listed below.

ZoomBrowser EX

Readme: Click the [Start] button ► select [All Programs] ([Programs] in versions other than Windows XP) ► [Canon Utilities] ► [ZoomBrowser EX] ► [ZoomBrowser EX README].

RAW Image Task

Readme: Click the [Start] button ► select [All Programs] ([Programs] in versions other than Windows XP) ► [Canon Utilities] ► [RAW Image Task] ► [RAW Image Task Readme].

● Click on the item to display its page.

Starting the ZoomBrowser EX	2-2
Image Display and Folder Handling	2-3
Image Display	2-3
Folder Structure and File Names	2-3
Handling the Folders	2-3
Registering Frequent Use Folder	2-3
Selecting the Image Display Mode	2-4
Zoom Mode	2-4
Scroll Mode	2-5
Preview Mode	2-6
Viewer Window	2-7
Properties Window	2-8
View & Classify Function	2-8
Viewing the Images as a Slide Show	2-8
Renaming the Multiple Files	2-9

Classifying the Images into Folders	2-10
Searching Images	2-10
Editing Function	2-11
Editing Images	2-11
Merging Images	2-11
Processing RAW Images	2-12
Exporting Function	2-14
Exporting Still Images	2-14
Exporting Shooting Properties	2-14
Exporting an Image as a Screen Saver	2-15
Exporting an Image as Wallpaper	2-15
Writing Images to a CD	2-16
Printing Images	2-16
One Photo per Page Printing	2-16
Index Printing	2-17
Layout Printing	2-17
Printing with Easy-PhotoPrint	2-18
Printing Using Other Software	2-18
Internet Function	2-19
Sending an Image by E-mail	2-19
Using CANON iIMAGE GATEWAY	2-19
Registering as a Member of CANON iIMAGE GATEWAY or Changing the Connection Information	2-19
Displaying the Top Page or Photo Album Page of CANON iIMAGE GATEWAY	2-19
Registering an Image in CANON iIMAGE GATEWAY	2-20
Modifying ZoomBrowser EX Settings	2-20
Task Button Display Settings	2-20
Specifying Preferences	2-20

Cover/Table of Contents

Introduction

Downloading Images from the Camera, and Camera Settings

Working with Images in the ZoomBrowser EX

Remote Shooting in the EOS Capture

Setting the EOS 5D and EOS-1D Series Cameras

Troubleshooting and Uninstalling the Software

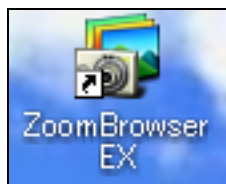
Index



Starting the ZoomBrowser EX

Double-click on the [ZoomBrowser EX] icon on the desktop.

- Main window appears.
- When you download images with [CameraWindow] (p.1-4), the ZoomBrowser EX starts automatically and the downloaded images are displayed in the main window.
- Alternatively, you can start the ZoomBrowser EX by clicking the [Start] button ► selecting [All Programs] ([Programs] in versions other than Windows XP) ► [Canon Utilities] ► [ZoomBrowser EX] ► [ZoomBrowser EX].



Main Window

Displays the path of the folder selected in the folder area.

Displays the selected image in the viewer window (p.2-7).

Displays the selected images as a slide show (automatic playback) (p.2-8).

You can search for images by condition (p.2-10).

You can delete the selected image or folder.

You can rotate the selected image.

Menu bar
Contains the same functions as the task button functions.

Click to show/hide the task buttons.

Task buttons
You can perform various operations from 6 types of buttons (p.2-8 to p.2-20).

Displays the registered favorite folders (p.2-3).

Displays the drives and folders on the computer (p.2-3).

You can switch between showing and hiding the task buttons and folder area.

Folder area
The images in the selected folder are displayed in the image display area. [📁] is automatically attached to the folder containing the images downloaded with CameraWindow.

Add to Favorites button (p.2-3)

You can change the display mode of the image display area (p.2-4 to p.2-6).

Displayed on images that are protected.

Displayed on RAW images.

Image display area
The images inside the folder selected in the folder area are displayed.

Displays the number of images selected.

- When sound is recorded in an image shot with an EOS-1D series camera, the sound file is displayed with a [🔊]. For playback of the sound, select the [Edit] menu ► [Play Sound].
- The mark attached to the folder containing the images downloaded with CameraWindow is stored until you quit ZoomBrowser EX.

- [📷] is displayed on images shot with AEB.
- ZoomBrowser EX is compatible with Color Management System (compatible color spaces: sRGB, Adobe RGB). When the [Adjust color of images using monitor profile] checkbox in the [Color Management] in the preferences (p.2-20) is checkmarked, sRGB and Adobe RGB images are displayed in the same colors.

Cover/Table of Contents

Introduction

Downloading Images from the Camera, and Camera Settings

Working with Images in the ZoomBrowser EX

Remote Shooting in the EOS Capture

Setting the EOS 5D and EOS-1D Series Cameras

Troubleshooting and Uninstalling the Software

Index



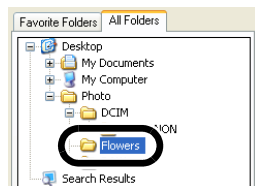
Image Display and Folder Handling

Image Display

The images in the folder selected in the folder area are displayed in the image display area.

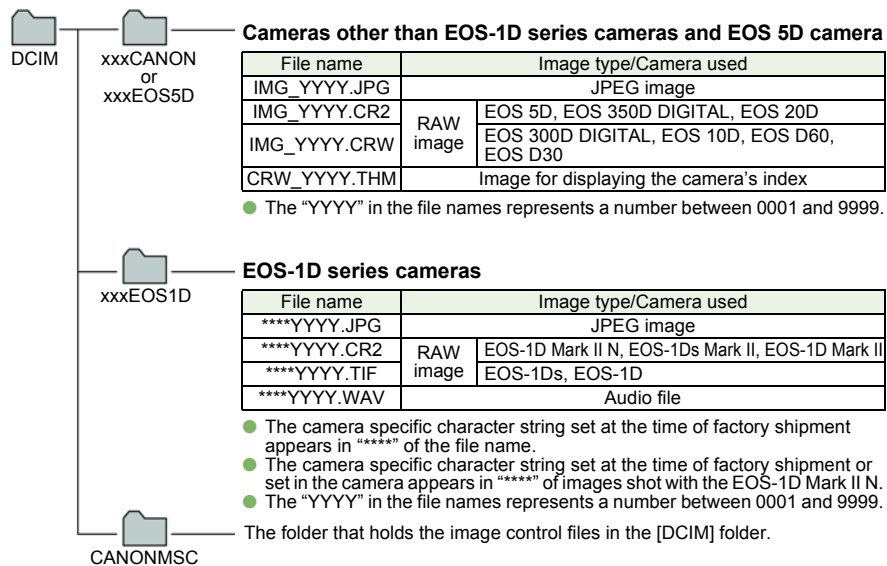
Select the folder where the images to be displayed are saved.

→ The images in the folder are displayed in the main window.



Folder Structure and File Names

Images shot with the camera are saved in the memory card's [DCIM] folder, with the following folder structure and file names.



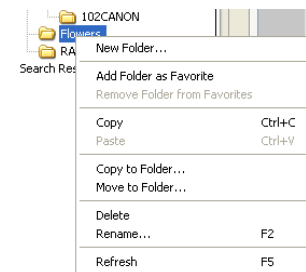
- The "xxx" in the folder names represent a number between 100 to 999.
- The folder structure for the EOS-1D Mark II N, EOS-1Ds Mark II and EOS-1D Mark II CF card and SD card is the same.
- When you perform DPOF settings on the camera, a [MISC] folder is created. The files that manage the DPOF settings are saved in the [MISC] folder.

When Adobe RGB is specified, the file names of images shot with the EOS-1D Mark II N, EOS-1Ds Mark II, EOS-1D Mark II, EOS 5D, EOS 350D DIGITAL, and EOS 20D have an underbar " _ " as the first character.

Handling the Folders

You can handle the folder on the menu that appears by right-clicking the folder.

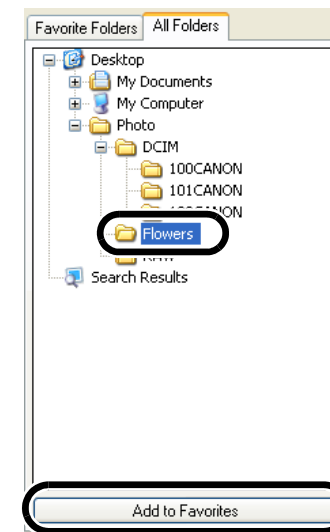
Right-click on the folder and select an option from the menu that appears.



Registering Frequent Use Folder

You can register a frequently used folder as a [Favorite Folders].

- Select the [All Folders] tab.
- Select the folder you want to register and then click the [Add to Favorites] button.
- Select the [Favorite Folders] tab.
 - The registered folder appears.
 - Alternatively, you can register a favorite folder in the dialog box displayed when you click the [Add] button in the [Favorite Folders] tab sheet.
 - To remove the registered folder, click the [Remove] button in the [Favorite Folders] tab sheet.



The removed registered folder is deleted only from the [Favorite Folders] tab sheet and the actual folder or images inside the folder are not deleted.

Cover/Table of Contents

Introduction

Downloading Images from the Camera, and Camera Settings

Working with Images in the ZoomBrowser EX

Remote Shooting in the EOS Capture

Setting the EOS 5D and EOS-1D Series Cameras

Troubleshooting and Uninstalling the Software

Index



Selecting the Image Display Mode

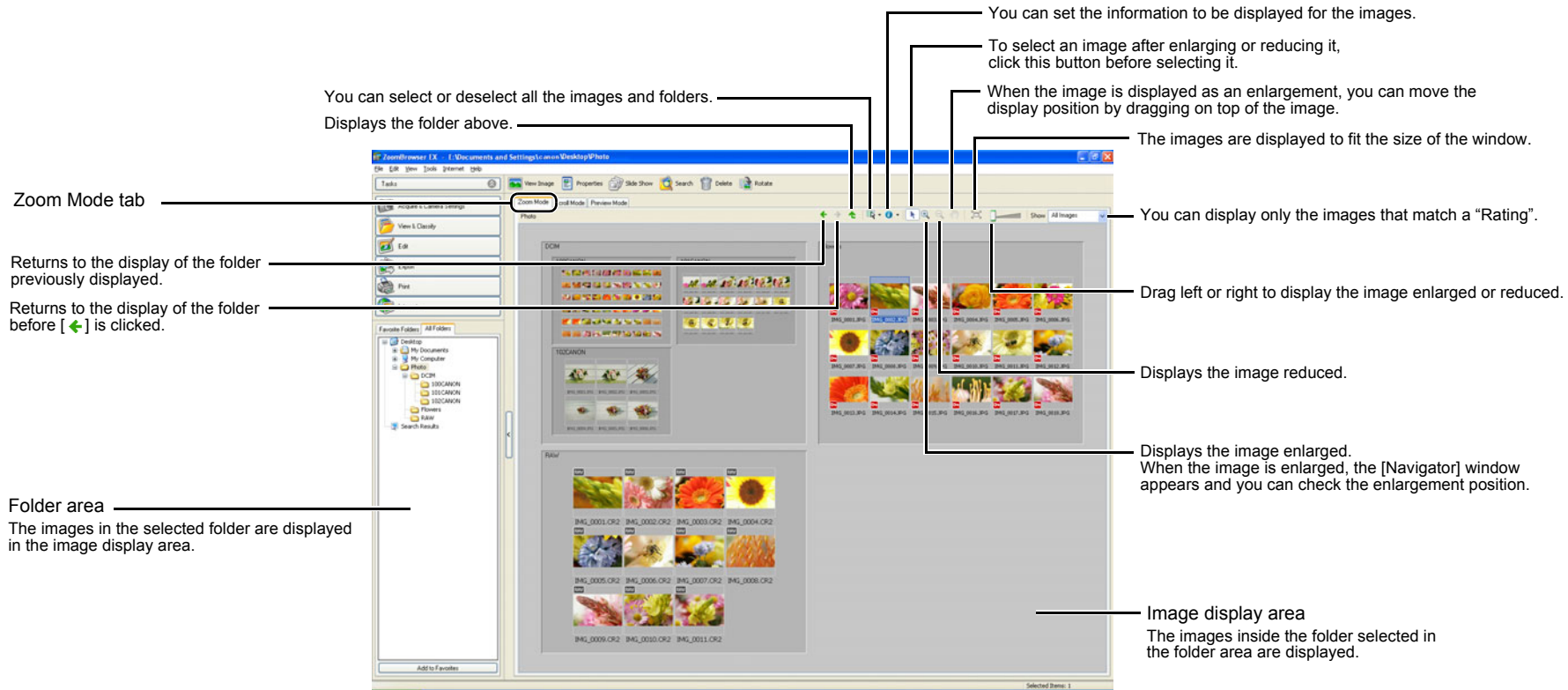
You can select the image display mode from 3 types (Zoom Mode, Scroll Mode and Preview Mode).

Also, in the viewer window, you can display images individually, and in the properties window, you can check shooting information and enter comments, etc.

Zoom Mode

You can zoom into the target folder and display the images inside the folder.

Select the [Zoom Mode] tab.



- To select an image, click the target image.
- To select sequential images, click the first image and then hold down the <Shift> key and then click the last image.

- To select multiple images, hold down the <Ctrl> key and click the images.
- If you move the mouse cursor on top of the image and wait for a while, the image will be displayed individually.
- You can zoom in by double-clicking inside the folder frame.

You can set the zoom speed when a folder is selected in the preferences (p.2-20).

Cover/Table of Contents

Introduction

Downloading Images from the Camera, and Camera Settings

Working with Images in the ZoomBrowser EX

Remote Shooting in the EOS Capture

Setting the EOS 5D and EOS-1D Series Cameras

Troubleshooting and Uninstalling the Software

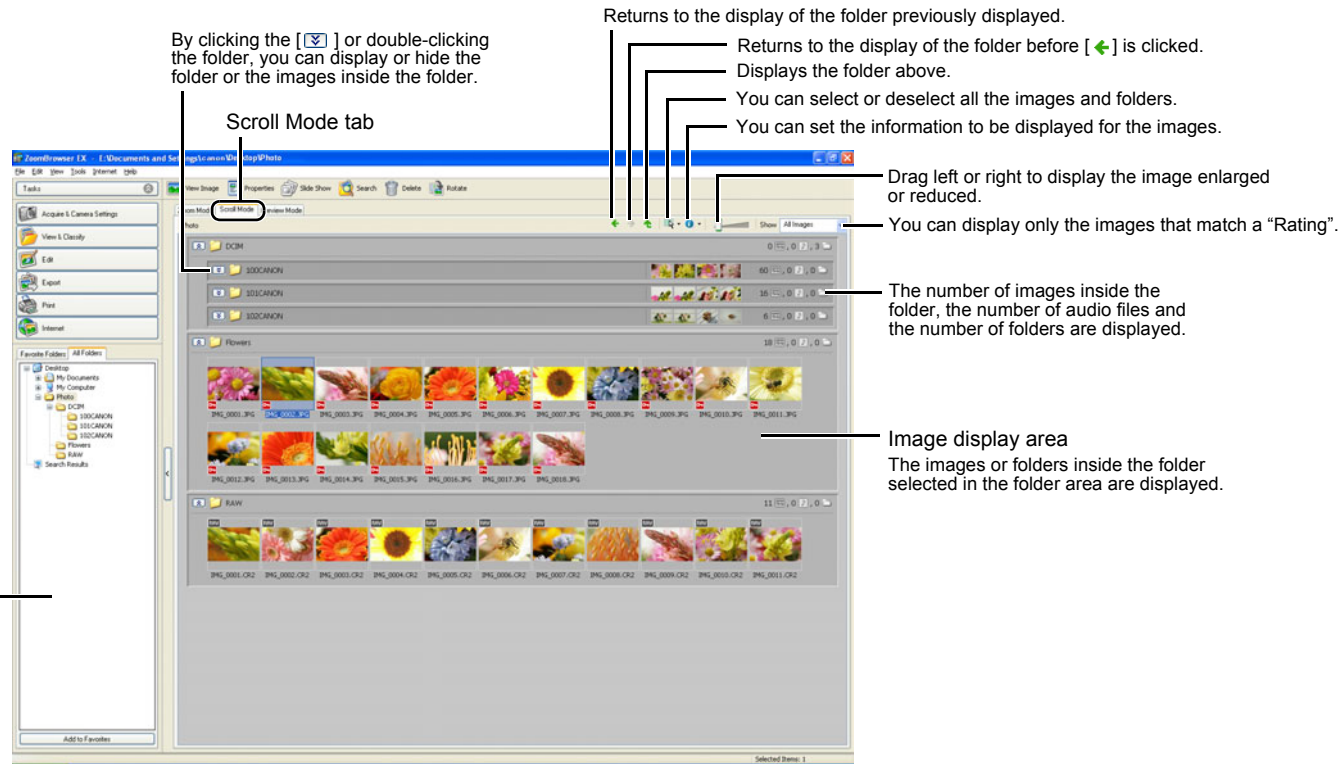
Index



Scroll Mode

You can display the images in multiple folders at the same time.


Select the [Scroll Mode] tab.



Folder area
The images or folders in the selected folder are displayed in the image display area.

- To select an image, click the target image.
- To select sequential images, click the first image and then hold down the <Shift> key and then click the last image.

- To select multiple images, hold down the <Ctrl> key and click the images.
- If you move the mouse cursor on top of the image and wait for a while, the image will be displayed individually.

 You can set the level of the folder that displays the images in the preferences (p.2-20).

Cover/Table of Contents

Introduction

Downloading Images from the Camera, and Camera Settings

Working with Images in the ZoomBrowser EX

Remote Shooting in the EOS Capture

Setting the EOS 5D and EOS-1D Series Cameras

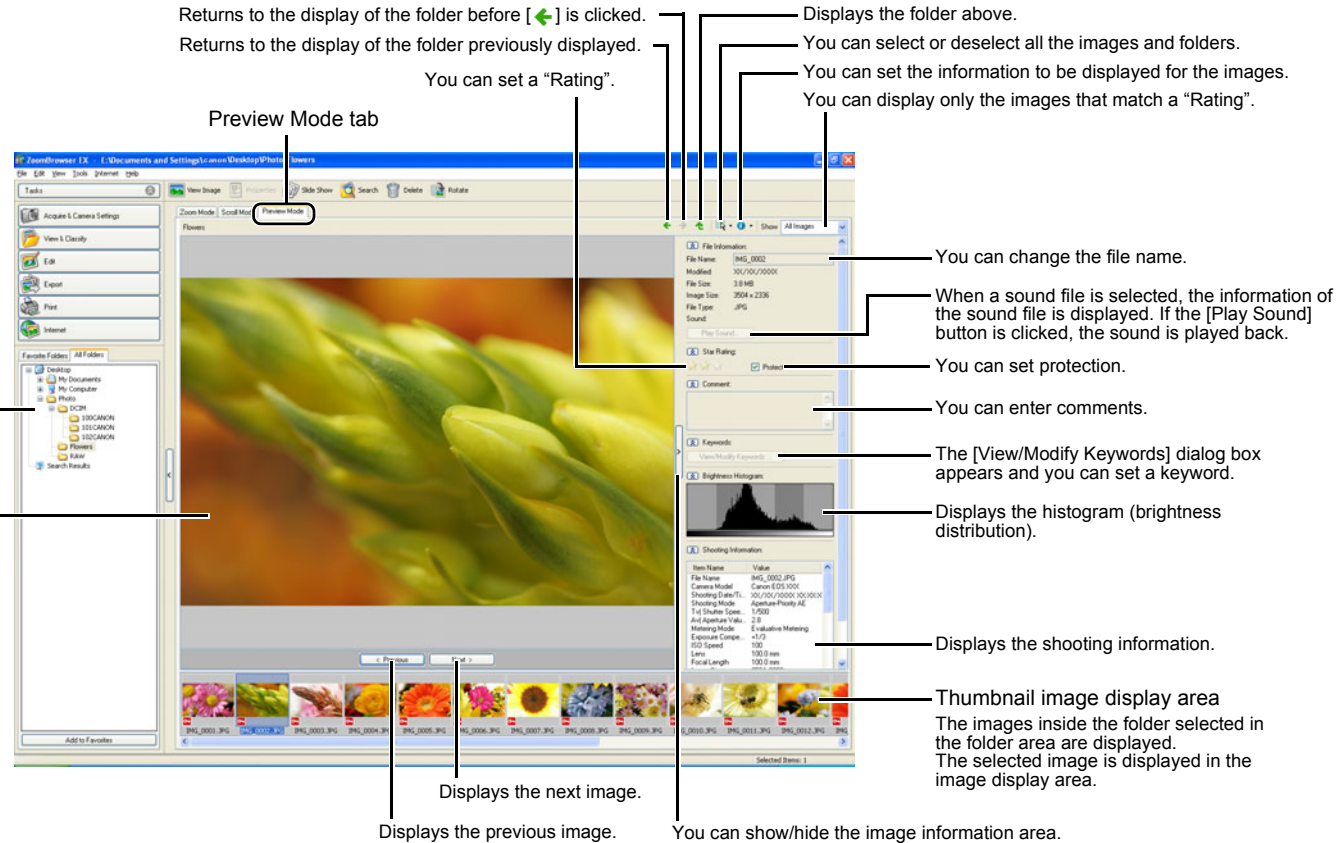
Troubleshooting and Uninstalling the Software

Index

Preview Mode

You can select an image displayed as a thumbnail and display it individually.

Select the [Preview Mode] tab.



Folder area
The images in the selected folder are displayed in the thumbnail image display area.

Image display area
Displays the image selected in the thumbnail image display area.

- To select multiple images, hold down the <Ctrl> key and click the images.
- To select sequential images, click the first image and then hold down the <Shift> key and then click the last image.
- You can switch between showing and hiding each item by clicking the [⏏] button.

- If you move the mouse cursor on top of the thumbnail image and wait for a while, the image will be displayed individually.
- If you double-click on a folder in the thumbnail image display area, the images inside the folder will be displayed.

⚠ You cannot change the file name or edit an image that is protected.

Cover/Table of Contents

Introduction

Downloading Images from the Camera, and Camera Settings

Working with Images in the ZoomBrowser EX

Remote Shooting in the EOS Capture

Setting the EOS 5D and EOS-1D Series Cameras

Troubleshooting and Uninstalling the Software

Index



Viewer Window

You can display images in individual windows.

Double-click the image.

→ The selected image displays in the viewer window.

Displays the image reduced.

Displays the image enlarged. When the image is enlarged, the [Navigator] window appears and you can check the enlargement position.

Displays the next image.*

Displays the previous image.*

Displays the image to fit the size of the window.

You can set the image to 100% view (actual pixel size).

Drag left or right to display the image enlarged or reduced.

You can display the image in full screen. To return to the original view, click the image.

You can set a "Rating".

When the image is displayed as an enlargement, you can move the display position by dragging on top of the image.

You can print the image.

You can edit the image (p.2-11).

You can display the AF point used when the shot was taken.

You can display the shooting information.

When you have divided the window and displayed multiple images, you can link the images by making the enlargement ratio and display position of the images the same.*

You can divide the window and display multiple images.*

Image display area

Only displayed on RAW images. You can process a RAW image and display it.

* When you have selected multiple images and opened the viewer window, you can switch between the selected images. If you have selected one image and opened the viewer window, you can switch between images inside the same folder.

- When the shot was taken with automatic AF point selection, multiple active AF points might be displayed.
- You can change the processing parameters of RAW images (p.2-12).
- You can set in the preferences the items that are displayed as the shooting information (p.2-20).

Cover/Table of Contents

Introduction

Downloading Images from the Camera, and Camera Settings

Working with Images in the ZoomBrowser EX

Remote Shooting in the EOS Capture

Setting the EOS 5D and EOS-1D Series Cameras

Troubleshooting and Uninstalling the Software

Index

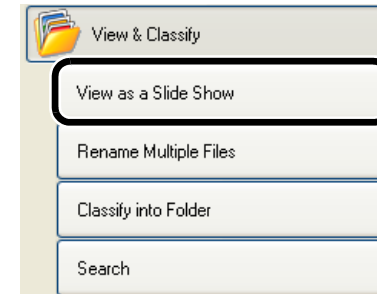


View & Classify Function

Viewing the Images as a Slide Show

You can view the images as a slide show (automatic playback).

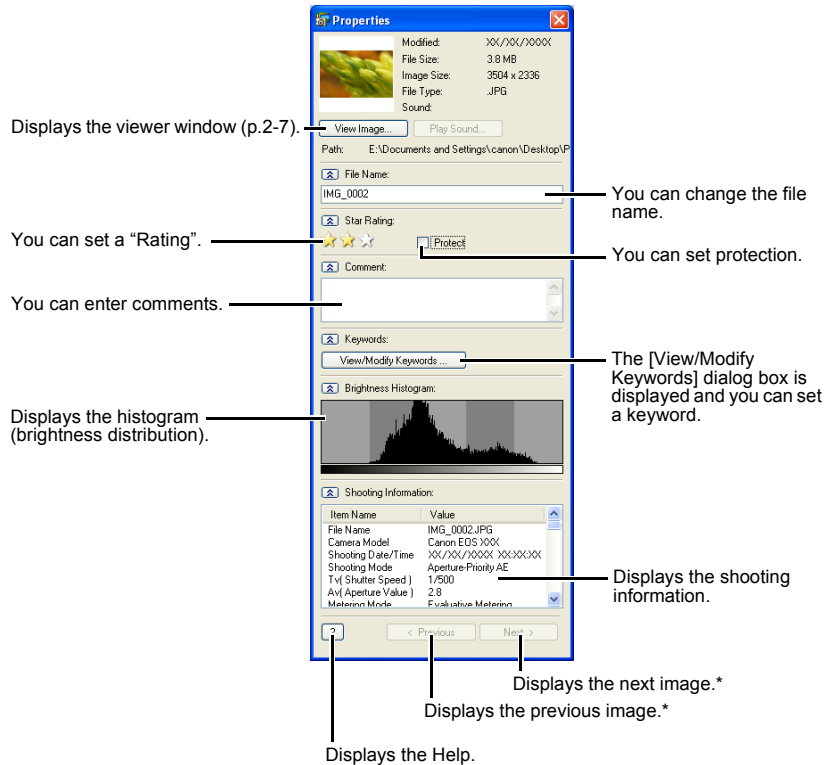
- 1 Select the images.
- 2 Click [View & Classify].
→ The [View & Classify] menu appears.
- 3 Click [View as a Slide Show].
→ The settings window appears.
- 4 Specify desired settings.
• For detailed information, click the [?] button and refer to the Help displayed.




Properties Window


You can enter information and comments for the images.


- 1 Select the image in zoom mode (p.2-4) or scroll mode (p.2-5).
- 2 Click the [Properties] button (p.2-2).
→ The properties window appears.



* When you select multiple images and open the properties window, you can switch the image displayed.

- You can switch between showing and hiding each item by clicking the [] button.

 You cannot change the file name or edit an image that is protected.

 If you select a sound file, the information relating to that sound file is displayed.

Cover/Table of Contents

Introduction

Downloading Images from the Camera, and Camera Settings

Working with Images in the ZoomBrowser EX

Remote Shooting in the EOS Capture

Setting the EOS 5D and EOS-1D Series Cameras

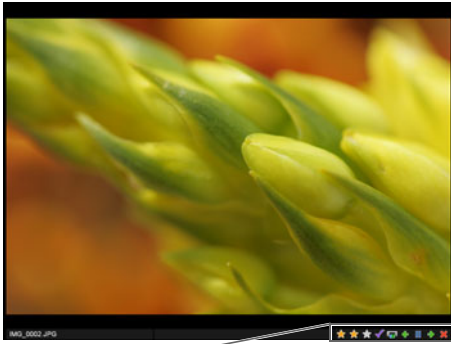
Troubleshooting and Uninstalling the Software

Index



5 Click [Start Slide Show].

→ The slide show begins.



You can set a "Rating".

If clicked when an image is displayed, the image appears selected or deselected in the main window after the slide show ends.


If clicked when an image is displayed, the printing dialog box (p.2-16) appears after the slide show ends, and you can print the selected images.

Displays the previous image.

Pauses the slide show.

Displays the next image.

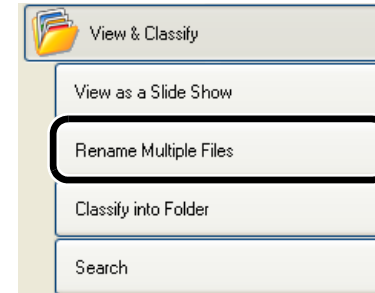
Ends the slide show.

 You can end the slide show by pressing the <Esc> key on the keyboard.

Renaming the Multiple Files

You can rename the multiple files in a single operation.

- 1 Select the images.**
- 2 Click [View & Classify].**
→ The [View & Classify] menu appears.
- 3 Click [Rename Multiple Files].**
→ The settings window appears.
- 4 Specify desired settings.**
• For detailed information, click the [?] button and refer to the Help displayed.
- 5 Click [Finish].**
→ The processing window appears and the settings are executed.



Cover/Table of Contents

Introduction

Downloading Images from the Camera, and Camera Settings

Working with Images in the ZoomBrowser EX

Remote Shooting in the EOS Capture

Setting the EOS 5D and EOS-1D Series Cameras

Troubleshooting and Uninstalling the Software

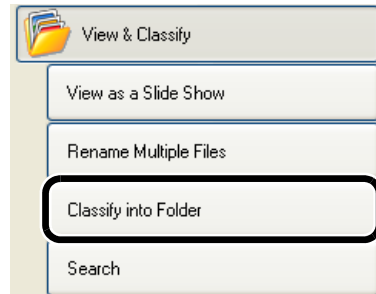
Index



Classifying the Images into Folders

You can classify images according to the date and time they were shot.

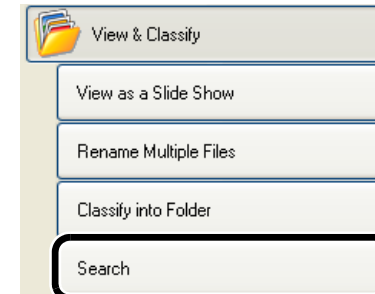
- 1 Select the images.**
- 2 Click [View & Classify].**
→ The [View & Classify] menu appears.
- 3 Click [Classify into Folder].**
→ The settings window appears.
- 4 Specify desired settings.**
 - For detailed information, click the [?] button and refer to the Help displayed.
- 5 Click [Finish].**
→ The processing window appears and the settings are executed.



Searching Images

You can search for images with set conditions.

- 1 Select in the folder area or in the image display area the folder or drive to be searched (p.2-2).**
- 2 Click [View & Classify].**
→ The [View & Classify] menu appears.
- 3 Click [Search].**
→ The settings window appears.
- 4 Specify desired settings.**
 - For detailed information, click the [?] button and refer to the Help displayed.
- 5 Click [Start Search].**
→ The search begins and the images that match the set conditions are displayed.
- 6 Click [Finish].**
 - The display returns to the main window.
 - Select [Search Results] in the folder area to display the searched images.
 - The images in [Search Results] are stored until you search for an image with set conditions again or exit ZoomBrowser EX.



Cover/Table of Contents

Introduction

Downloading Images from the Camera, and Camera Settings

Working with Images in the ZoomBrowser EX

Remote Shooting in the EOS Capture

Setting the EOS 5D and EOS-1D Series Cameras

Troubleshooting and Uninstalling the Software

Index



Editing Function

Editing Images

You can edit your images with red-eye correction, brightness/color correction, sharpness, trimming, text insertion, automatic correction, etc. Also, you can transfer an image to other image editing software.

1 Select one image.

2 Click [Edit].
→ The [Edit] menu appears.

3 Click [Edit Image].
→ The settings window appears.

4 Select the contents to be edited and then click [Finish].

- For detailed information, click the [?] button and refer to the Help displayed.
- To transfer and edit your image in different image editing software, select [Edit with external image editor], click the [Manage List] button and then select the image editing software to be used.

5 Edit the image and then click the [Save As] button.
→ The [Save As] dialog box appears.

6 Select the save destination and click the [Save] button.
→ The edited image is saved.



- You cannot select multiple images and edit.
- You cannot edit RAW images here. You can edit RAW images with RAW Image Task (p.2-12).
- Edited images cannot be reverted to their original condition. We recommend saving edited images under a different name.

Merging Images

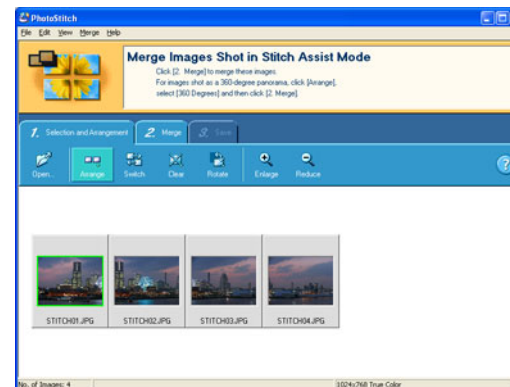
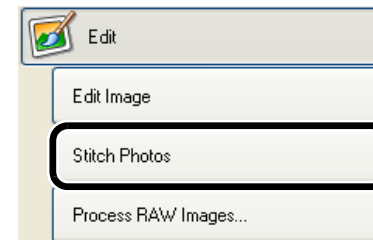
You can merge up to 4 JPEG images to create a panorama image.

1 Select multiple images.

2 Click [Edit].
→ The [Edit] menu appears.

3 Click [Stitch Photos].
→ The PhotoStitch starts and the main window appears.

- Follow the instructions displayed to merge the images.
- For detailed information, click the [?] button and refer to the Help displayed.



- You cannot merge RAW images in the PhotoStitch.
- Merging may not be successful when more than 4 images are merged.

Cover/Table of Contents

Introduction

Downloading Images from the Camera, and Camera Settings

Working with Images in the ZoomBrowser EX

Remote Shooting in the EOS Capture

Setting the EOS 5D and EOS-1D Series Cameras

Troubleshooting and Uninstalling the Software

Index



Processing RAW Images

You can specify the same processing parameters for RAW images as for the camera so that the RAW images are optimized for their intended purpose.

Also, you can convert RAW images to TIFF images or JPEG images and save or transfer them to other image editing software, as well as attach ICC profiles.

1 Select the RAW image.

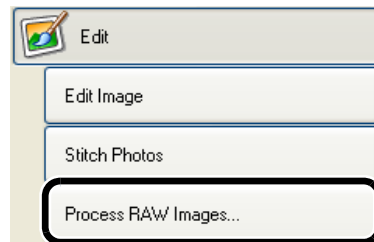
2 Click [Edit].

→ The [Edit] menu appears.

3 Click [Process RAW Images].

→ The RAW Image Task starts and the main window appears.

- Refer to the next page for an explanation of the RAW Image Task window.
- For detailed information, refer to [Help] menu and the [RAW Image Task Help].



4 Adjust the image.

- Adjust the image with the [Image Quality Adjustment] window.

5 Click [Save] in the toolbar.

→ The [Save Images] window appears.

6 Specify desired settings.

7 Click the [Save] button.

→ The processing window appears and the image is saved.

8 Select the [File] menu ► [Exit].

→ The RAW Image Task exits.



- Because only the processing parameter settings are changed and they are not added to the RAW image, you can change the parameters multiple times or revert to the condition when the image was shot. In addition, there is hardly any of the image deterioration that accompanies processing parameter changes.
- When the [Preview] is selected, every time you set a processing parameter, the image is processed/redisplayed. To process multiple processing parameters in one operation, deselect the [Preview]. After setting multiple processing parameters, click the [Update] button and the multiple processing parameters will be processed/redisplayed in one operation.
- The time needed after setting of processing parameters for processing and displaying an image is approximately 1 to 3 seconds.
 - The above time is only an estimate. Processing times vary widely depending on the camera model used to take the RAW image, the type of computer, and the subject of the photo.
 - Processing times are based on Canon testing standards.
(When using the following: OS: Windows XP, CPU: 2.2 GHz Pentium 4; RAM: 512MB)
- You can attach ICC profiles to TIFF and JPEG images converted and saved from RAW images. An ICC profile contains color information, such as color properties and color spaces of devices which are authorized by International Color Consortium (ICC). With this ICC profile, many Color Management Systems can minimize the color differences between devices.
- RAW Image Task is compatible with Color Management System. In addition, two types of color space are compatible with RAW Image Task, and if the [Adjust color of images using monitor profile] checkbox in the [Color Management] in the preferences of ZoomBrowser EX (p.2-20) is checkmarked, sRGB and Adobe RGB images displayed in RAW Image Task are displayed in the same color.
 - sRGB: Windows standard color space. Also widely used for the standard color space for monitors, digital cameras, scanners and other devices.
 - Adobe RGB: A wider color space than sRGB. Mainly used for printing for business purposes.

Cover/Table of Contents

Introduction

Downloading Images from the Camera, and Camera Settings

Working with Images in the ZoomBrowser EX

Remote Shooting in the EOS Capture

Setting the EOS 5D and EOS-1D Series Cameras

Troubleshooting and Uninstalling the Software

Index





RAW Image Task Main Window

You can transfer the image to the specified image editing software.

You can rotate a selected image.

You can select or deselect all the images.

You can set checkmarks on images selected in the thumbnail image display area.

The next image is displayed. *

The previous image is displayed. *

Thumbnail image display area
The selected image is processed and displayed in the image display area.

Image display area
The image selected in the thumbnail image display area is processed and displayed.

Toolbar

* Where you have selected multiple RAW images and started RAW Image Task, you can switch between the displayed images.

- The settings at the time of shooting are displayed in bold/italics in the list box of the [Image Quality Adjustment] window.
- The processing parameters you have set can be applied to other images by copy/paste, save/download in the [Development Conditions] menu in the [Edit] menu.
- With the EOS-1Ds Mark II, EOS-1D Mark II, EOS-1Ds and EOS-1D, you can save an adjusted tone curve or white balance as a file. Also, you can register the saved files in the camera (p.4-13, p.4-14).
- The [Image Quality Adjustment] window is displayed when you select a RAW image shot with the EOS-1D Mark II N and EOS 5D. The displayed information varies depending on the camera used to shoot.

You can show/hide the [Image Quality Adjustment] window.

You can save the adjusted image.

Click this button before selecting the image.

Displays the image enlarged.

Displays the image reduced.

When the image is displayed as an enlargement, you can move the display position by dragging on top of the image.

You can show/hide the [Histogram] window.

You can show/hide the [Navigator] window.

Displays the shooting information.

The images are displayed to fit the size of the window.

The image is displayed at 100% (actual pixel size).

The zoom ratio of the image is displayed.

Drag left or right to display the image enlarged or reduced.

When checkmarked, the specified processing parameters are applied to the image each time.

You can revert to the processing parameters of when the image was shot.

The specified processing parameters are applied to the image.

Image Quality Adjustment Window

Sets each processing parameter.

You can load Picture Style files saved on your computer and apply them to images. (This function is compatible with the EOS-1D Mark II N and EOS 5D only.)

Cover/Table of Contents

Introduction

Downloading Images from the Camera, and Camera Settings

Working with Images in the ZoomBrowser EX

Remote Shooting in the EOS Capture

Setting the EOS 5D and EOS-1D Series Cameras

Troubleshooting and Uninstalling the Software

Index

White balance files saved in EOS-1D series cameras other than EOS-1D Mark II N cannot be used with other camera models.

- You can download Picture Style files (p.4-11) from the Canon web site.
- White balance files and tone curve files saved in EOS-1D series cameras other than EOS-1D Mark II N are compatible with RAW Image Task for both Windows and Macintosh.
- Tone curve files for the EOS-1Ds Mark II and EOS-1D Mark II are compatible.
- Tone curve files for the EOS-1Ds and EOS-1D are compatible.

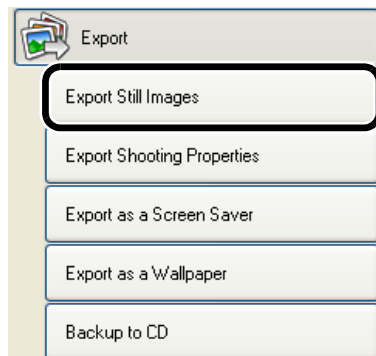


Exporting Function

Exporting Still Images

You can change the size of JPEG images as well as convert them to other image types and save them.

- 1 Select the images.**
- 2 Click [Export].**
→ The [Export] menu appears.
- 3 Click [Export Still Images].**
→ The settings window appears.
- 4 Specify desired settings.**
 - For detailed information, click the [?] button and refer to the Help displayed.
- 5 Click [Finish].**
→ The processing window appears and the settings are executed.

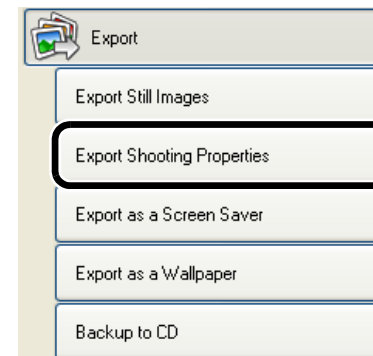


 You cannot export RAW images.

Exporting Shooting Properties

You can export as a text file the shooting properties recorded to the image when the shot was taken.

- 1 Select the image.**
- 2 Click [Export].**
→ The [Export] menu appears.
- 3 Click [Export Shooting Properties].**
→ The settings window appears.
- 4 Specify desired settings.**
 - For detailed information, click the [?] button and refer to the Help displayed.
- 5 Click [Finish].**
→ The processing window appears and the settings are executed.



Cover/Table of Contents

Introduction

Downloading Images from the Camera, and Camera Settings

Working with Images in the ZoomBrowser EX

Remote Shooting in the EOS Capture

Setting the EOS 5D and EOS-1D Series Cameras

Troubleshooting and Uninstalling the Software

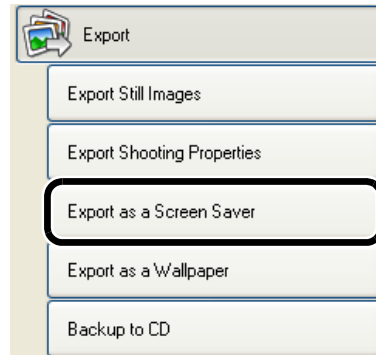
Index



Exporting an Image as a Screen Saver

You can export a JPEG image as a file for a computer screen saver.

- 1 Select the image.**
- 2 Click [Export].**
→ The [Export] menu appears.
- 3 Click [Export as a Screen Saver].**
→ The settings window appears.
- 4 Specify desired settings.**
 - For detailed information, click the [?] button and refer to the Help displayed.



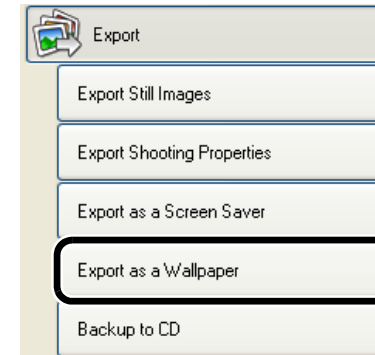
- 5 Click [Finish].**
→ The processing window appears and the settings are executed.

 You cannot export RAW images.

Exporting an Image as Wallpaper

You can export a JPEG image as a file for wallpaper for a computer.

- 1 Select the image.**
- 2 Click [Export].**
→ The [Export] menu appears.
- 3 Click [Export as a Wallpaper].**
→ The settings window appears.
- 4 Specify desired settings.**
 - For detailed information, click the [?] button and refer to the Help displayed.



- 5 Click [Finish].**
→ The processing window appears and the settings are executed.

 You cannot export RAW images.

Cover/Table of Contents

Introduction

Downloading Images from the Camera, and Camera Settings

Working with Images in the ZoomBrowser EX

Remote Shooting in the EOS Capture

Setting the EOS 5D and EOS-1D Series Cameras

Troubleshooting and Uninstalling the Software

Index



Writing Images to a CD

You can write images to a CD-R/CD-RW.

- This function is only compatible with a computer that has Windows XP pre-installed and is equipped with a standard CD-R/CD-RW drive.

1 Select the images.

2 Click [Export].

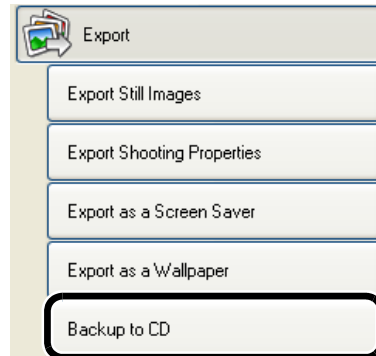
→ The [Export] menu appears.

3 Click [Backup to CD].

→ The settings window appears.

4 Specify desired settings.

- For detailed information, click the [?] button and refer to the Help displayed.



5 Click [Start Backup].

→ The processing window appears and the settings are executed.

Printing Images

One Photo per Page Printing

You can print one photo per page.

1 Select the image.

2 Click [Print].

→ The [Print] menu appears.

3 Click [One Photo per Page Print].

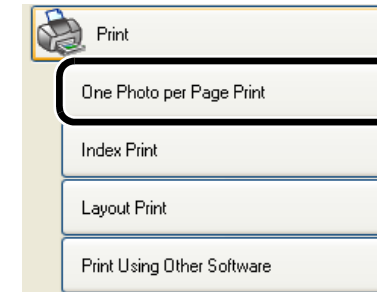
→ The settings window appears.


4 Specify desired settings.

- For detailed information, click the [?] button and refer to the Help displayed.

5 Click [Print] button.

→ The processing window appears and the image is printed.



 If Easy-PhotoPrint, the dedicated printing software for Canon BJ Printers is installed, it becomes the default software for printing. To cancel printing with Easy-PhotoPrint and switch to printing with ZoomBrowser EX independently, select [Use the Print Function in ZoomBrowser EX] in the [Printing] tab sheet of the preferences (p.2-20).

Cover/Table of Contents

Introduction

Downloading Images from the Camera, and Camera Settings

Working with Images in the ZoomBrowser EX

Remote Shooting in the EOS Capture

Setting the EOS 5D and EOS-1D Series Cameras

Troubleshooting and Uninstalling the Software

Index



Index Printing

You can print the images in index format.

1 Select the images.

2 Click [Print].

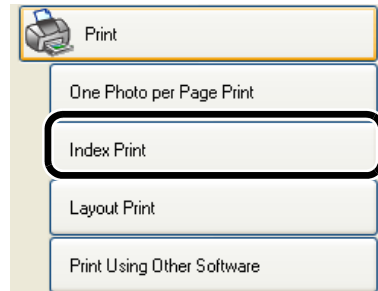
→ The [Print] menu appears.

3 Click [Index Print].

→ The settings window appears.

4 Specify desired settings.

- For detailed information, click the [?] button and refer to the Help displayed.



5 Click [Print] button.

→ The processing window appears and the images are printed.

Layout Printing

You can layout images and print them.

- The settings displayed in the dialog box vary depending on the printer being used.

1 Select the images.

2 Click [Print].

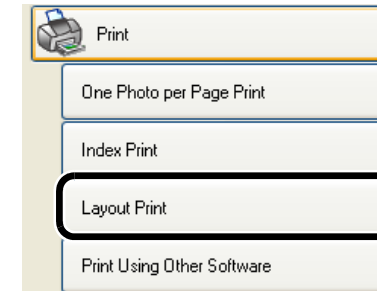
→ The [Print] menu appears.

3 Click [Layout Print].

→ The settings window appears.

4 Select the items you want printed.

- For detailed information, click the [?] button and refer to the Help displayed.



5 Click [Open Layout Print].

→ The PhotoRecord starts and the main window appears.

6 Click [Select Printer & Album Type] and specify.

- For detailed information, refer to the [Help] menu.



7 Click [Select Paper] and specify.

- Selects the media type.
- For detailed information, refer to the [Help] menu.

Cover/Table of Contents

Introduction

Downloading Images from the Camera, and Camera Settings

Working with Images in the ZoomBrowser EX

Remote Shooting in the EOS Capture

Setting the EOS 5D and EOS-1D Series Cameras

Troubleshooting and Uninstalling the Software

Index



8 Click [Decorate Album] and specify.

- Selects the image decoration.
- For detailed information, refer to the [Help] menu.

9 Click [Add Titles & Captions] and specify.

- Sets a title and/or caption to be printed with the image.
- For detailed information, refer to the [Help] menu.

10 Click [Print].

→ The settings appear.

11 Click the [Print] button.

→ The images are printed.



Printing with Easy-PhotoPrint

Easy-PhotoPrint is software exclusively for use with Canon BJ printers. If Easy-PhotoPrint is installed on your computer, you can print with Easy-PhotoPrint.

1 Select an image.

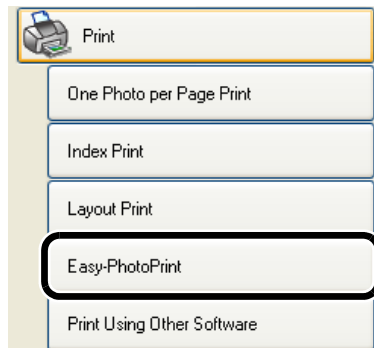
2 Click [Print].

→ The [Print] menu appears.

3 Click [Easy-PhotoPrint].

→ Easy-PhotoPrint starts up.

- Follow the instructions displayed to print the images.



Printing Using Other Software

You can select software other than ZoomBrowser EX and print.

1 Select an image.

2 Click [Print].

→ The [Print] menu appears.

3 Click [Print Using Other Software].

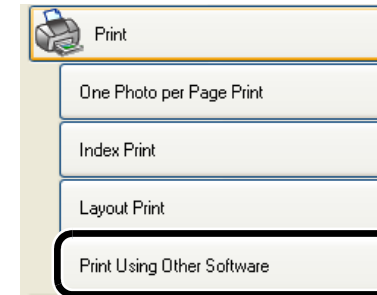
→ The settings window appears.

4 Select the software for printing and specify desired settings.

- For detailed information, click the [?] button and refer to the Help displayed.

5 Click the [Launch Software] button.

→ The software selected in step 4 starts. Follow the instructions displayed to print the images.



Cover/Table of Contents

Introduction

Downloading Images from the Camera, and Camera Settings

Working with Images in the ZoomBrowser EX

Remote Shooting in the EOS Capture

Setting the EOS 5D and EOS-1D Series Cameras

Troubleshooting and Uninstalling the Software

Index

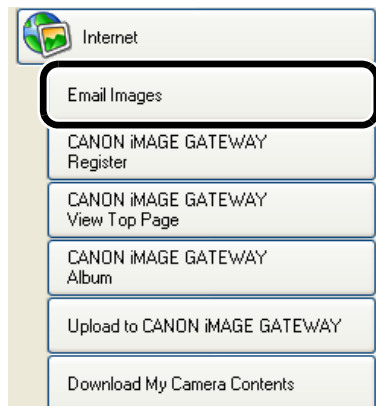


Internet Function

Sending an Image by E-mail

You can attach an image to an e-mail and send it.

- 1 Select the image.**
- 2 Click [Internet].**
→ The [Internet] menu appears.
- 3 Click [Email Images].**
→ The settings window appears.
- 4 Specify desired settings and then click [Send or Save].**
 - For detailed information, click the [?] button and refer to the Help displayed.
- 5 Specify desired settings.**
 - For detailed information, click the [?] button and refer to the Help displayed.
- 6 Click [Finish].**
→ Your e-mail software starts.
 - Enter the necessary information and then send the message.



Using CANON iMAGE GATEWAY

CANON iMAGE GATEWAY is a free internet online service (no joining or annual fee) restricted to users who have purchased a Canon digital camera.

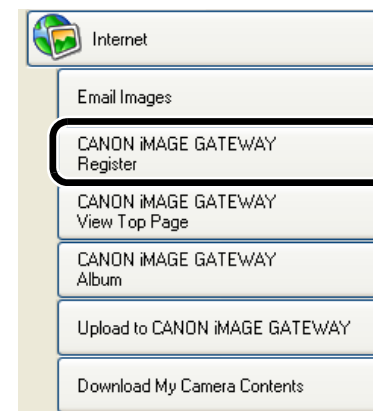
To connect to CANON iMAGE GATEWAY, it is necessary to register as a member beforehand. Perform member registration from the installer panel displayed when you insert the Solution Disk provided into the CD-ROM drive of your computer. You can also use the following procedure to register as a member.

For details on the CANON iMAGE GATEWAY, refer to the Help of CANON iMAGE GATEWAY.

Registering as a Member of CANON iMAGE GATEWAY or Changing the Connection Information

You can register as a member of CANON iMAGE GATEWAY as well as change the connection information.

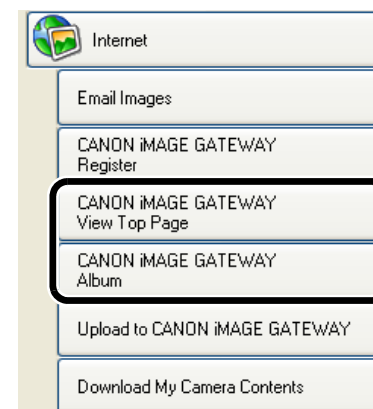
- 1 Click [Internet].**
→ The [Internet] menu appears.
- 2 Click [CANON iMAGE GATEWAY Register].**
 - The settings dialog box for member registration and connection information appears.
 - If you have not yet registered as a member, click the [Register] button and register following the instructions in the dialog box.
 - If you have already registered as a member, you can change the connection information as well as add a camera to register.



Displaying the Top Page or Photo Album Page of CANON iMAGE GATEWAY

You can display the top page or photo album page of CANON iMAGE GATEWAY in the browser software you are using.

- 1 Click [Internet].**
→ The [Internet] menu appears.
- 2 Click [CANON iMAGE GATEWAY View Top Page] or [CANON iMAGE GATEWAY Album].**
→ When the connection window appears and connection is completed, the browser software you are using starts and the CANON iMAGE GATEWAY top page or photo album page appears.



Cover/Table of Contents

Introduction

Downloading Images from the Camera, and Camera Settings

Working with Images in the ZoomBrowser EX

Remote Shooting in the EOS Capture

Setting the EOS 5D and EOS-1D Series Cameras

Troubleshooting and Uninstalling the Software

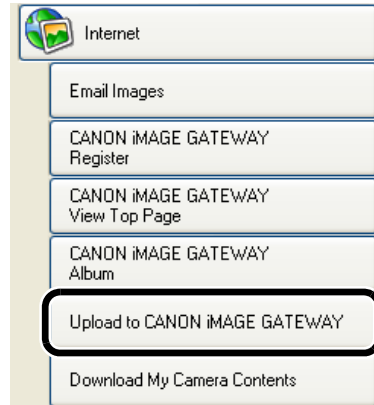
Index



Registering an Image in CANON iMAGE GATEWAY

You can register an image in the photo album function of CANON iMAGE GATEWAY.

- 1 Select the image.**
- 2 Click [Internet].**
→ The [Internet] menu appears.
- 3 Click [Upload to CANON iMAGE GATEWAY].**
→ The settings window appears.
- 4 Specify the desired settings and then click the [Next] button.**
 - For detailed information, click the [?] button and refer to the Help displayed.
- 5 Check the contents of the displayed dialog box and click the [Upload] button.**
→ When the connection window appears and connection is completed, the browser software you are using starts and the image registered in the photo album page appears.
 - For detailed information, click the [?] button and refer to the Help displayed.



Modifying ZoomBrowser EX Settings

Task Button Display Settings

You can specify which task buttons to show or hide.

- 1 Select the [Tools] menu ► [Customize].**
- 2 Select the items you want to show.**
 - Deselect the items you do not want to show.

Specifying Preferences

You can set various ZoomBrowser EX function settings.

- 1 Select the [Tools] menu ► [Preferences].**
- 2 Specify desired settings.**
 - For detailed information, refer to the [Help] menu.

Cover/Table of Contents

Introduction

Downloading Images from the Camera, and Camera Settings

Working with Images in the ZoomBrowser EX

Remote Shooting in the EOS Capture

Setting the EOS 5D and EOS-1D Series Cameras

Troubleshooting and Uninstalling the Software

Index



3 Remote Shooting in the EOS Capture

This chapter explains how to use the EOS Capture for taking shots remotely from your computer.

For more information on the restrictions of the EOS Capture, refer also to the source listed below.

Readme: Click the [Start] button ► select [All Programs] ([Programs] in versions other than Windows XP) ► [Canon Utilities] ► [EOS Capture xx] (“xx” is the version) ► [EOS Capture Readme].

- Remote shooting in the EOS Capture is available with the EOS-1D Mark II N, EOS-1Ds Mark II, EOS-1D Mark II, EOS-1Ds, EOS-1D, EOS 5D, EOS 350D DIGITAL and EOS 20D.
- EOS Capture cannot be used when the camera’s communication mode is set to [Print/PTP] or [PTP]. Set the camera’s communication mode to [PC connect.], [PC connection] or [Normal] (p.1-1).

- Click on the item to display its page.

Remote Shooting	3-2
Single-frame Shooting	3-2
Timer Shooting.....	3-3
Interval Timer Shooting.....	3-3
Specifying the Camera Settings	3-3
Camera Settings	3-3
White Balance Adjustment.....	3-4
Specifying the Save Destination	3-4

Cover/Table of Contents

Introduction

Downloading Images from the Camera, and Camera Settings

Working with Images in the ZoomBrowser EX

Remote Shooting in the EOS Capture

Setting the EOS 5D and EOS-1D Series Cameras

Troubleshooting and Uninstalling the Software

Index



Remote Shooting

Single-frame Shooting

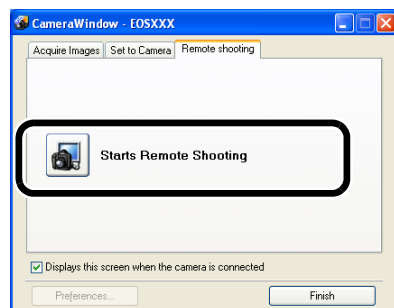
You can take shots by remote controlling your camera from a computer.

1 Connect the camera to the computer (p.1-2).

- The [CameraWindow] appears.
- When the ZoomBrowser EX is running, select [Acquire & Camera Settings] ► [Remote shooting] to start [CameraWindow].

2 Select the [Remote shooting] tab and click the [Starts Remote Shooting] button.

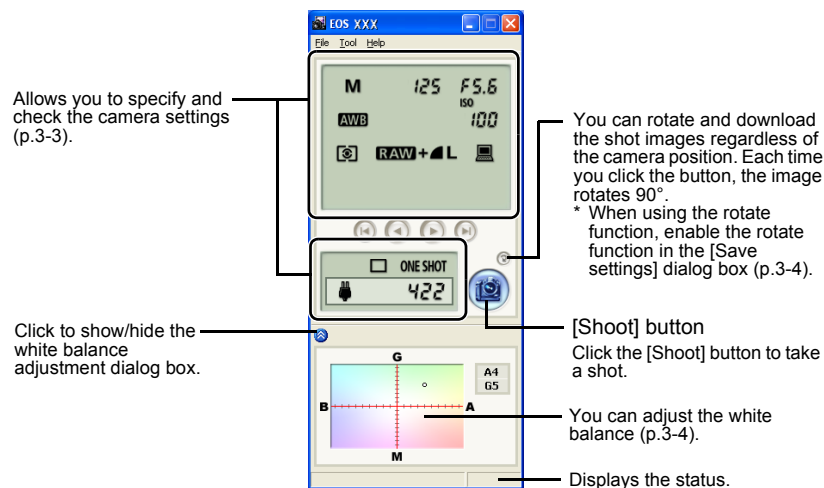
- The [Select Folder] dialog box appears.



3 Select the destination folder to which images will be saved and click the [OK] button.

- The ZoomBrowser EX and EOS Capture start and the EOS Capture main window appears.

4 Specify desired settings.



- The above window shows information displayable when the EOS 5D is connected. The displayed information varies depending on the camera model connected.

5 Click the [Shoot] button.

- The shot image is saved in the specified folder and is displayed in the ZoomBrowser EX.
- Alternatively, you can press the camera's shutter button to take the shot.
- To exit the EOS Capture, select the [File] menu ► [Exit].

- If the camera is not ready for shooting (the lens is not attached, etc.), you cannot perform the operation as explained.
- When you are using auto focus, you cannot take shots if the camera cannot focus. In this case, focus manually.
- Bulb exposure is not available.

- Alternatively, you can press the space bar to shoot.
- The number of available shots changes depending on the available capacity on your computer's hard disk (p.3-3).
- The time to transfer a RAW image shot with EOS Capture to your computer is approximately 4 to 7 seconds.
 - The above time is only an estimate. Transfer times vary widely depending on the camera model used, the type of computer, and the subject of the photo.
 - Transfer times are based on Canon testing standards.
(When using the following: OS: Windows XP, CPU: 2.2 GHz Pentium 4; RAM: 512MB)
 - The times for images shot in JPEG will be shorter than those shown above.

Cover/Table of Contents

Introduction

Downloading Images from the Camera, and Camera Settings

Working with Images in the ZoomBrowser EX

Remote Shooting in the EOS Capture

Setting the EOS 5D and EOS-1D Series Cameras

Troubleshooting and Uninstalling the Software

Index



Timer Shooting

You can automatically take a shot when the specified time elapses.

- 1 Select the [Tool] menu ► [Timer Shooting]
→ The [Timer shooting setting] dialog box appears.
- 2 Enter a delay time and click the [Start] button.
 - Enter a value between 0 seconds and 99 minutes 59 seconds in 1-second increments.
 - The shot is taken when the specified time elapses.

Interval Timer Shooting

You can automatically take shots by setting the interval between shots and the number of shots to be taken.

- 1 Select the [Tool] menu ► [Timer Shooting].
→ The [Timer shooting setting] dialog box appears.
- 2 Checkmark the [Interval timer shooting] checkbox.
- 3 Enter the shooting interval and the number of shots. Then click the [Start] button.
 - Enter a value between 5 seconds and 99 minutes 59 seconds in 1-second increments.
 - You can shoot up to 9999 photos with EOS-1D series cameras, and up to 999 photos with cameras other than EOS-1D series cameras.
 - Shooting is performed at the specified interval and for the specified number of shots.

On some types of computers, if you set a short interval between shots and there is insufficient time to download and save the images, it may not be possible to take shots at the specified interval. In this case, set a longer interval between shots and take the shots again.

Specifying the Camera Settings

You can check and change the settings in the camera from your computer remotely.

Camera Settings

You can check and specify the camera settings.

- With the EOS-1D, you can only check the content of the settings but you cannot specify settings.

1 Check the camera settings.

Shutter speed
Displays/specifies Tv (shutter speed).
(Not displayed when Aperture-priority AE or Program AE is specified for the shooting mode.)

Shooting mode
Displays the shooting mode.
(You can change the settings for the EOS-1D series cameras, excluding the EOS-1D.)

Aperture value
Displays/specifies Av (aperture value).
(Not displayed when Shutter-priority AE or Program AE is specified for the shooting mode.)

ISO Speed
Displays/specifies the ISO speed.

White Balance
Displays/specifies the white balance.

Metering mode
Displays/specifies the settings of the metering mode.

Image recording quality
Displays/specifies the image recording quality.

Save destination display (p.3-4)
Displays the destination folder to which images will be saved. (When you select the [Save] also on the camera's memory card), the camera/computer icon is displayed, and when you deselect the checkbox, the computer icon is displayed.)

Exposure compensation
Displays/specifies the exposure compensation value.

Bracket shots*
Displays when AEB, FEB, white balance bracketing or ISO bracketing is set.

Drive mode
Displays the drive mode.

AF mode
Displays the AF mode.

Battery status
When you are using a battery, [] is displayed. When you are using the AC Adapter Kit (optional) or DC Coupler Kit, [] is displayed.

Warning display
Displayed when the remote shooting is impossible due to inappropriate settings.

Shots to Go
Displays the number of available shots.

- * is not displayed with the EOS-1Ds and EOS-1D.
- The ISO bracketing of * is not displayed with EOS 5D, EOS 350D DIGITAL and EOS 20D.
- The FEB of * is not displayed with the EOS 350D DIGITAL and EOS 20D.
- The above window shows information displayable when the EOS 5D is connected. The displayed information varies depending on the camera model connected.

Cover/Table of Contents

Introduction

Downloading Images from the Camera, and Camera Settings

Working with Images in the ZoomBrowser EX

Remote Shooting in the EOS Capture

Setting the EOS 5D and EOS-1D Series Cameras

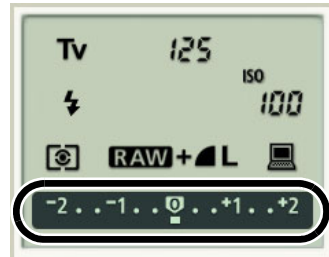
Troubleshooting and Uninstalling the Software

Index



4 Click the icon to be set.

- The icon displayed here shows exposure compensation as an example.



5 Use the buttons to change a value.



Specifies the minimum value.

Specifies the maximum value.

Allows you to decrease the value by 1 step.

Allows you to increase the value by 1 step.

- The changed settings are applied to the camera.

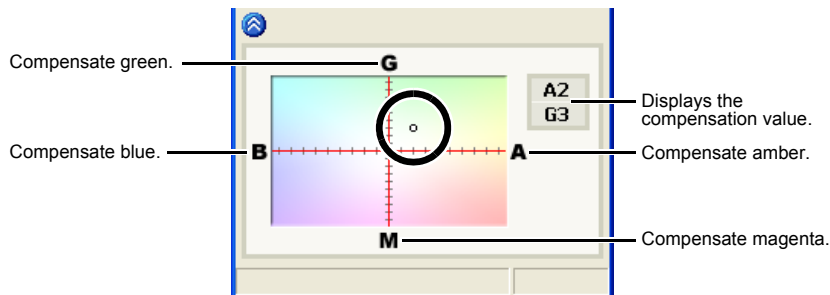
- Before you specify the settings, be sure to check that the camera is ready for shooting. If the camera is not ready for shooting (the lens is not attached, etc.), you cannot make some of the settings.
- Set functions which you cannot set with EOS Capture (drive mode, AF mode etc.) in the camera.

White Balance Adjustment

You can compensate white balance with the blue/amber/green/magenta digital filter.

- If the dialog box has not appeared, click the [WB] button.

Click the compensation position.



- The changed settings are applied to the camera.

Specifying the Save Destination

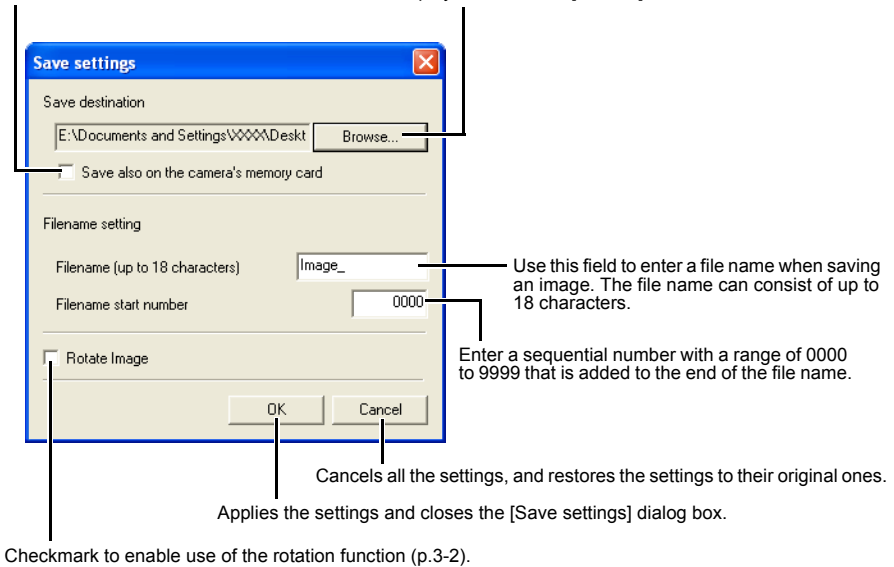
You can specify save destination folders and file names.

- Select the [File] menu ► [Save setting].
→ The [Save settings] dialog box appears.
- Specify desired settings and click the [OK] button.

Save settings dialog box

Checkmark to also save images on the memory card in the camera.

Allows you to change the destination folder to which images will be saved. The path and name of the save folder are displayed next to the [Browse] button.



Use this field to enter a file name when saving an image. The file name can consist of up to 18 characters.

Enter a sequential number with a range of 0000 to 9999 that is added to the end of the file name.

OK: Applies the settings and closes the [Save settings] dialog box.
Cancel: Cancels all the settings, and restores the settings to their original ones.

Checkmark to enable use of the rotation function (p.3-2).

Cover/Table of Contents

Introduction

Downloading Images from the Camera, and Camera Settings

Working with Images in the ZoomBrowser EX

Remote Shooting in the EOS Capture

Setting the EOS 5D and EOS-1D Series Cameras

Troubleshooting and Uninstalling the Software

Index



4 Setting the EOS 5D and EOS-1D Series Cameras

This chapter explains the functions that can be set in the EOS 5D and EOS-1D series cameras.

Refer to Chapter 1 for how to connect the camera and your computer (p.1-2).

Refer to Chapter 1 for settings for cameras other than the EOS 5D and EOS-1D series cameras (p.1-5).

● Click on the item to display its page.

Camera Settings	4-2
Basic Settings	4-2
Personal Function Settings	4-3
Description of Personal Functions	4-4
Checking, Saving, and Loading Personal Function Settings	4-9
Shot Settings	4-10
Picture Style.....	4-11
Specifying the Parameters.....	4-12
Specifying the Tone Curve.....	4-13
Specifying the Personal White Balance.....	4-14
Specifying the Color Matrix.....	4-15
Specifying the JPEG Quality.....	4-15

Cover/Table of Contents

Introduction

Downloading Images from the Camera, and Camera Settings

Working with Images in the ZoomBrowser EX

Remote Shooting in the EOS Capture

Setting the EOS 5D and EOS-1D Series Cameras

Troubleshooting and Uninstalling the Software

Index



Camera Settings

You can specify settings for the camera such as the camera owner's name, the date and time, Personal Functions and all shot settings.

1 Select the [Set to Camera] tab.

→ The [Set to Camera] tab sheet appears.

2 Click the [Confirms/changes camera settings] button.

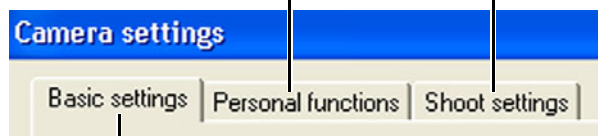
→ The [Camera Settings] dialog box appears.



3 Select a tab and specify the camera settings.

You can set up Personal Functions and apply the settings to the camera (p.4-3).

You can apply to the camera all settings relating to the images shot by the camera.



You can specify camera owner's name and shooting date/time on the camera, and confirm the camera properties data and the status of the battery and the memory card.

- With the EOS 5D, only the [Basic settings] tab and [Shoot settings] tab are displayed.
- With the EOS-1Ds and EOS-1D, the [Basic Settings] tab and the [Detailed Settings] tab are displayed. In the [Detailed Settings] tab sheet, you can set Personal Functions (p.4-3), processing parameters (p.4-12) and personal white balance (p.4-14), and apply the settings to the camera.

Basic Settings

You can specify the camera owner's name and the date and time on the camera, and confirm the status of the camera's battery and memory card.

1 Display the [Camera settings] dialog box.

2 Select the [Basic settings] tab.

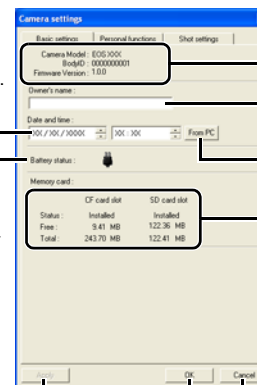
→ The [Basic settings] tab sheet appears.



3 Specify desired settings.

Enter a value or click the [▲]/[▼] buttons to specify the date and time.

The battery level of the camera is indicated by [] or []. When you are using the DC Coupler Kit supplied with the camera or the AC Adapter Kit (optional), [] is displayed.



Displays the information relating to the camera.

Enter the camera owner's name. You can enter up to 31 characters.

Imports the date and time from your computer.

Displays the information relating to the memory card inside the camera.*

Applies the settings to the camera.

Applies the settings to the camera and closes the dialog box.

Applies the settings to the camera and closes the dialog box.

* With the EOS 5D, EOS-1Ds and EOS-1D, the [Format] button is displayed in the CF card information display. You can initialize the CF card by clicking this button. Be careful as [Format] will delete the entire recorded contents on the CF card.

- The above window shows information displayable when the EOS-1D Mark II N is connected. The displayed information varies depending on the camera model connected.

4 Click the [OK] button.

→ The settings are applied and the [Camera settings] dialog box closes.

Cover/Table of Contents

Introduction

Downloading Images from the Camera, and Camera Settings

Working with Images in the ZoomBrowser EX

Remote Shooting in the EOS Capture

Setting the EOS 5D and EOS-1D Series Cameras

Troubleshooting and Uninstalling the Software

Index



Personal Function Settings

You can set Personal Functions tailored to different types of photography and apply those function settings to the camera. You can also save the specified settings on your computer and load the saved settings.

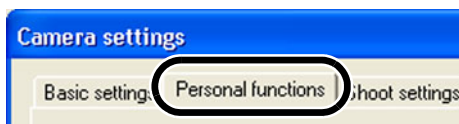
- These functions are compatible with the EOS-1D series only.

1 Display the [Camera settings] dialog box (p.4-2).

2 Select the [Personal functions] tab.

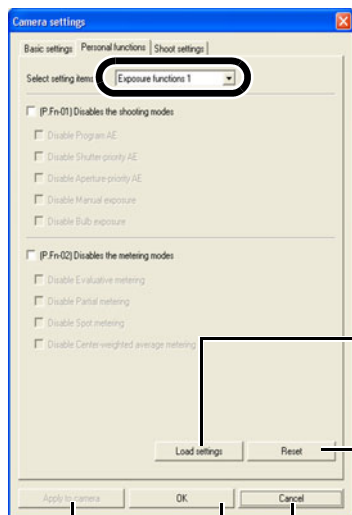
→ The [Personal functions] tab sheet appears.

- With the EOS-1Ds and EOS-1D, select the [Detailed Settings] tab and click [Personal Functions] button.



3 Select a window in which you wish to specify settings from the list box.

- With the EOS-1Ds and EOS-1D, select the tab to be set.



Loads the details of the Personal Functions that have been specified on the camera.

Removes all the checkmarks from the windows.

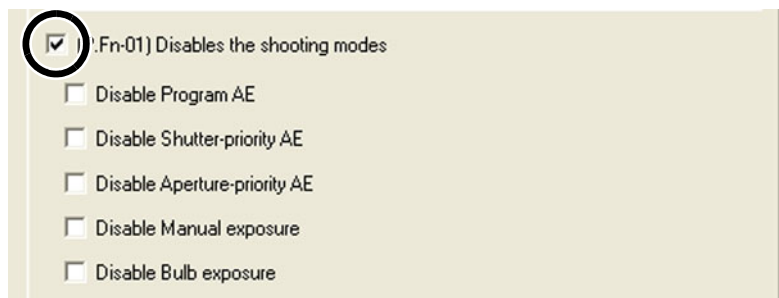
Applies the settings to the camera.

Applies the settings to the camera and closes the dialog box.

→ The selected window appears.

- In the [Combination] window, you can check the specified Personal Function settings and the status of whether or not the settings are applied to the camera. You can also save and load the Personal Function settings (p.4-9).

4 Checkmark the box and specify any necessary settings (p.4-4 to p.4-8).



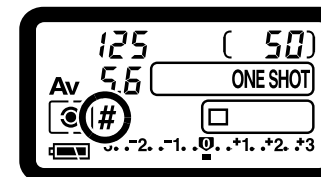
- If you enter a numerical value, values outside the valid range of settings are ignored.
- If the Personal Function settings are saved on your computer, the saved settings can be loaded (p.4-9).

5 Check the settings and save them on your computer if necessary (p.4-9).

6 Click the [OK] button.

→ Applies the settings and closes the [Camera settings] dialog box.

→ When a Personal Function is applied to the camera, <#> appears on the LCD panel.



Cover/Table of Contents

Introduction

Downloading Images from the Camera, and Camera Settings

Working with Images in the ZoomBrowser EX

Remote Shooting in the EOS Capture

Setting the EOS 5D and EOS-1D Series Cameras

Troubleshooting and Uninstalling the Software

Index



Description of Personal Functions

- The **C.Fn** shown in this section provides brief descriptions of the Custom Function Settings for the respective camera functions. For more details, refer to “Custom Function Settings” in the camera’s Instruction Manual.

P.Fn-01 Disables the shooting modes

- Checkmark the shooting modes you do not want to use.
- Unwanted shooting modes can be skipped while you are selecting the shooting mode.
- This makes selecting the desired shooting mode faster.
- **With the EOS-1Ds and EOS-1D, [Disable depth-of-field AE] is also displayed.**



At least one checkbox must be left unchecked.

P.Fn-02 Disables the metering modes

- Checkmark the metering modes you do not want to use.
- Unwanted metering modes can be skipped while you are selecting the metering mode.
- This makes selecting the desired metering mode faster.



At least one checkbox must be left unchecked.

P.Fn-03 Specifies the metering mode for manual exposure

- Select the metering mode to be specified.
- You can specify the metering mode to be used in the manual exposure mode.
- When you set the manual exposure mode, the metering mode selected here will be set automatically. In the manual exposure mode, this enables you to use a metering mode different from the one used in the AE modes.

P.Fn-04 Sets the maximum and minimum shutter speeds to be used

- Select the maximum and minimum shutter speeds from the list box.
For example, if you set 1/2000 sec. as the fastest shutter speed and 1/60 sec. as the slowest, the shutter speed range will be 1/2000 to 1/60 sec.
- This makes shutter speed selection faster and prevents a slow-speed sync. in aperture-priority AE mode with the flash.



- If you set the maximum and/or minimum shutter speed to one that is not a full-stop increment (such as 1/750 sec.), the controllable and settable shutter speed range might not be as exact as you set it (A slight deviation may occur.). This applies if you also set Custom Function C.Fn-6-1 and C.Fn-6-2 and set the maximum and/or minimum shutter speed to one that is not a full-stop increment (such as 1/3200 sec.).
- To ensure that a proper flash sync speed is set in the Program AE mode, a shutter speed range of 1/200 sec. to 1/80 sec. cannot be set with the EOS-1D Mark II N, EOS-1Ds Mark II, EOS-1D Mark II and EOS-1Ds, and the range of 1/400 sec. to 1/80 sec. cannot be set with the EOS-1D.
- If safety shift has been enabled (with C.Fn-16), it will override P.Fn-04’s shutter speed range.

P.Fn-05 Sets the maximum and minimum apertures to be used

- Select the maximum and minimum apertures from the list box.
For example, if you set 1.4 for the largest aperture and 8.0 for the smallest aperture, the usable aperture range will be f/1.4 to f/8.0.
- You can better control the apertures used by setting the range of usable apertures.



- Specify a minimum aperture value that is smaller than the maximum aperture setting. If you select a minimum aperture value that is larger than the maximum aperture, a warning message appears and the setting reverts to the default value.
- If you set the maximum and/or minimum aperture to one that is not a full-stop increment (such as f/4.5), the controllable and settable aperture range might not be as exact as you set it (A slight deviation may occur.). This applies if you also set Custom Function C.Fn-6-1 or C.Fn-6-2 and set the maximum and/or minimum aperture to one that is not a full-stop increment (such as f/6.3).
- If the largest aperture of the attached lens is smaller than the largest aperture you set with P.Fn-05, the largest aperture will be set to the lens’ largest aperture. And if the largest aperture of the attached lens is smaller than the smallest aperture you set with P.Fn-05, the aperture will be set and fixed to the lens’ largest aperture.
- If safety shift has been enabled (with C.Fn-16), it will override P.Fn-05’s aperture range.

Cover/Table of Contents

Introduction

Downloading Images from the Camera, and Camera Settings

Working with Images in the ZoomBrowser EX

Remote Shooting in the EOS Capture


Setting the EOS 5D and EOS-1D Series Cameras

Troubleshooting and Uninstalling the Software

Index



P.Fn-06 Registers and switches the shooting mode and metering mode

- Only while you press the <  > button, you can switch to the preset shooting mode, exposure setting (such as the aperture for aperture-priority AE), metering mode, and exposure compensation amount.
- Select settings that are appropriate for each shooting mode.
- The modes and settings are preset with the camera. See “Registering the Modes and Settings with the Camera” (see the right description) for information on the camera procedures.
- Convenient when you want to instantly select the preset modes and settings to suit a particular shooting situation such as backlit or front-lit conditions.

P.Fn-07 Repeats bracketing during continuous shooting

- While you hold down the shutter button, bracketing repeats continuously in the currently selected drive mode.
- This function is useful when you want to continuously repeat the bracketing sequence.

P.Fn-08 Sets the number of shots to be bracketed

- Select the number of shots from the list box.
- The usual 3-frame bracketing is changed to 2-, 3-, 5-, or 7-frame bracketing.
- In bracketing shots, if you select 5-frame bracketing with 1-stop increment, the bracketing for the shots is -2, -1, 0, +1 and +2.
- This function is useful for adjusting the range of bracketing.

- Even when the setting is outside the bracketing level display range, the exposure is compensated as specified.
- This function can be used in combination with C.Fn-09-2/3 and P.Fn-09.

P.Fn-09 Changes the bracketing sequence for C.Fn-09-2/3 to increased exposure, standard exposure, and decreased exposure



- The bracketing sequence when C.Fn-09-2/3 is selected (decreased exposure → standard exposure → increased exposure) changes to increased exposure → standard exposure → decreased exposure.
- This function is useful when you want to start the bracketing sequence with a increased exposure.

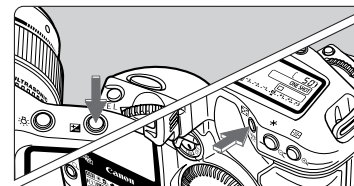
- This function can be used in combination with P.Fn-08.

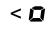
Registering the Modes and Settings with the Camera (P.Fn-06)

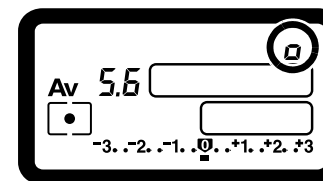
1 Set the shooting mode and shooting mode settings (for example, aperture setting for aperture-priority AE mode). Then set the metering mode and exposure compensation amount.

2 Register the modes and settings.


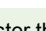
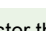
- First press the <  > button, then press the <  > button.




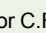
- <  > appears in the LCD panel, indicating that the modes and settings have registered.



- The registered modes and settings can be modified any number of times.

- To register the modes and settings, first press the <  > button before the <  > button. If you press the <  > button first, the camera will only select the registered modes and settings instead.
- Bulb cannot be preset.
- You cannot select the registered modes and settings during continuous shooting.

- If P.Fn-03 has been set to specify the metering mode for manual exposure, and P.Fn-06 is used to register the manual exposure mode and a metering mode different from the one specified with P.Fn-03, you can select the metering mode specified with P.Fn-03 by pressing the <  > button.
- If P.Fn-04 and/or P.Fn-05 has been set, set the shutter speed and aperture within the range specified with P.Fn-04 and/or P.Fn-05.
- If the shooting and metering modes you want to set are excluded by the restrictions in P.Fn-01 and P.Fn-02, those Personal Functions must be disabled. For information on clearing and resetting Personal Functions, refer to “Clearing and Resetting Personal Functions” in the camera’s Instruction Manual.
- Even if the shooting and metering modes selected by P.Fn-06 are excluded by the restrictions in P.Fn-01 and P.Fn-02, they are still valid for P.Fn-06.

- If C.Fn-4-1 or C.Fn-4-3 has been set, AF and AE will also take effect when you press the <  > button.
- When C.Fn-18 is set, P.Fn-06 is disabled.

Cover/Table of Contents

Introduction

Downloading Images from the Camera, and Camera Settings

Working with Images in the ZoomBrowser EX

Remote Shooting in the EOS Capture

Setting the EOS 5D and EOS-1D Series Cameras

Troubleshooting and Uninstalling the Software

Index

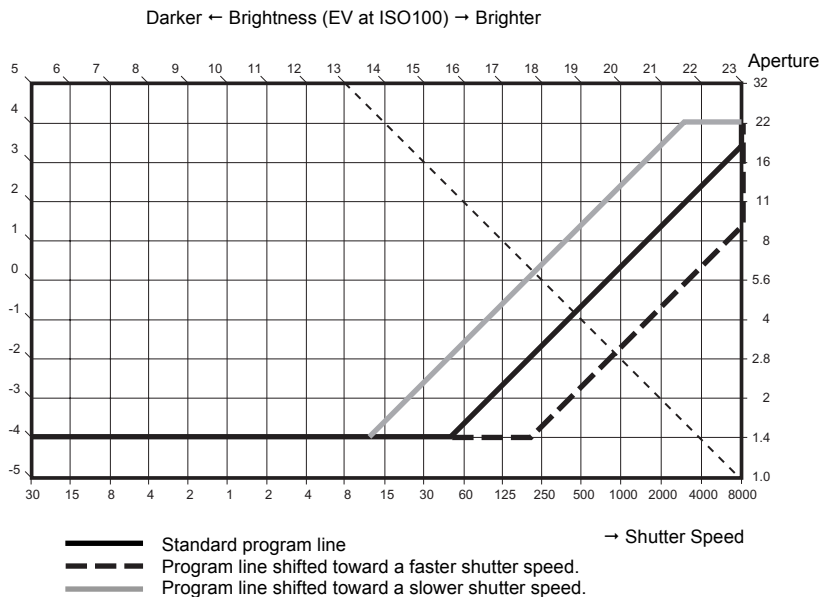


P.Fn-10 Retains the shift amount for program shift

- Normally, any program shift amount is canceled after you take the picture. This Personal Function retains the program shift amount.
- This function is useful when you want to shift the standard program line so that priority is given to the shutter speed or to the aperture.

By shifting the program, you can change the shutter speed or aperture and still retain the same exposure level. Under the same brightness, you can shift the program line toward the right to set a faster shutter speed and a larger aperture (lower f/number). Or you can shift the program line toward the left to set a slower shutter speed and a smaller aperture (higher f/number).

P.Fn-10 retains the amount of program shift. Select the appropriate amount of shift for the level of priority you want to give to the shutter speed or aperture setting.



With EF50mm f/1.4 USM

- The program shift amount remains in effect until you set it back to the standard program manually or replace the battery or press the <CLEAR> button.
- The shift amount is retained even after you change the lens.

P.Fn-13 Executes AI Servo AF continuous shooting giving priority to the drive speed

- During continuous shooting, shutter release-priority takes effect instead of focus-priority.
- Effective when it is more important to capture an image even though it might be slightly out of focus.
- This function is compatible with the EOS-1D only.

P.Fn-14 Disables focus detection (search driving) by the lens drive

- Normally, when you press the shutter button halfway and focus cannot be achieved, the lens is driven to search the correct focus. This lens driving operation can be turned off.
- When focus has been achieved once and refocusing fails, the subsequent lens driving operation can result in grossly out of focus. This subsequent lens driving operation is turned off. P.Fn-14 is especially suited for super telephoto lenses.

⚠ If autofocus is attempted while the lens is way out of focus, the lens may stop operating. Focus manually until the subject outline becomes discernable, then autofocus.

P.Fn-15 Disables the AF-assist beam from being emitted

- This disables the external Speedlite's built-in AF-assist beam.
- At a joint photo session, etc., this prevents the AF-assist beam's pattern projected on the subject from being photographed by other photographers.

P.Fn-16 Enables automatic shooting when focus is achieved at the fixed point of focus while the shutter button is pressed fully

- This takes the picture automatically when the subject comes to the preset focusing distance. Focusing detection is performed using the selected AF point.
- Set the lens focus mode switch to <MF> and focus manually at the desired point of focus.
- Keep pressing the shutter button fully.
- Using an accessory such as Remote Controller RS-80N3 which can lock the shutter button relieves you from holding down the shutter button while you wait for the subject.

- Because the camera remains on standby while the shutter button is fully pressed, battery power is used up more quickly. For long periods of photography, use the DC Coupler Kit.
- When this function is used in combination with a flash, the flash remains on standby at full charge. Consequently, the flash batteries are used up more quickly. (The Speedlite's SE mode is disabled.)
- When you use a flash with this function, set the drive mode to single-frame shooting. If you select continuous shooting, the flash will be unable to charge in time for successive shots and will not fire at full charge.
- If you set the drive mode to continuous shooting, set the number of shots in P.Fn-20. If you do not use P.Fn-20, once the camera focuses on the subject, continuous shooting will continue until the capacity of the memory card is reached.
- P.Fn-16 cannot be used with manual focus lenses or with lenses that are too slow to be used with autofocus.
- Do not use this function when C.Fn-4/1/3 is set as shots will be taken regardless of whether the image is in focus.

⚠ Using an accessory such as Remote Controller RS-80N3 which can lock the shutter button is recommended.

Cover/Table of Contents

Introduction

Downloading Images from the Camera, and Camera Settings

Working with Images in the ZoomBrowser EX

Remote Shooting in the EOS Capture

Setting the EOS 5D and EOS-1D Series Cameras


Troubleshooting and Uninstalling the Software

Index



P.Fn-17 Disables automatic AF point selection

- When you select beyond the peripheral AF point, the selection stops there. It makes selecting a peripheral AF point faster.

- If C.Fn-11-2 has been set, you can switch to automatic AF point selection by pressing the  button during autofocusing. (→ “Selecting the AF Point” in the camera’s Instruction Manual)
- If automatic AF point selection has been preset at [AF frame registration] setting, the preset setting remains valid. (→ “Registering and Switching the AF Point” in the camera’s Instruction Manual)

P.Fn-18 Enables automatic AF point selection when C.Fn-11-2 has been set

- Enables the standard horizontal AF point selection together with automatic AF point selection with C.Fn-11-2.
- Convenient when you want to use automatic AF point selection while C.Fn-11-2 has been set.

If P.Fn-17 [Disables automatic AF point selection] has also been set, P.Fn-17 will override P.Fn-18 to disable automatic AF point selection.

P.Fn-19 Sets the continuous shooting speed

- In the list box, select the speed of continuous shots during continuous shooting.
- By reducing the maximum continuous shooting speed, AI Servo AF continuous shooting can be more stable.
- With the EOS-1Ds Mark II and EOS-1Ds, only [Continuous Shooting] is displayed.**

In AI Servo AF, it may not be possible to complete the selected speed of continuous shots.

P.Fn-20 Limits the number of shots during continuous shooting

- This enables you to enter the maximum number of shots to be exposed during continuous shooting while the shutter button is pressed fully.
- Convenient when you do not want to shoot an unwanted scene that follows.

P.Fn-21 Enables quiet operation when the shutter button is OFF after picture-taking

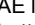

- When single shooting is selected, this function selects quiet camera operation when you release the shutter button from the fully pressed position to the half way position.
- This is useful when the camera operation noise would be disturbing after you take the picture.

If you select continuous shooting, the camera operates normally.


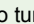
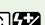
Setting mirror lockup with C.Fn-12 will further reduce the shooting noise.

P.Fn-23 Changes the timer's time length

- After you press and release a button, the respective function remains active for a specific number of seconds. You can change this number of seconds as necessary.
- The function's activation time can be set from 0 to 3600 sec. (1 hour).
- If the standard activation time is too short or too long, you can adjust it.

6 sec. Timer	AE lock time after you press the shutter button halfway or the  button.
16 sec. Timer	FE lock time after you press the  button.
Post-shutter release timer	Exposure setting retaining time after the picture is taken. Setting this to a longer time can make it easier to shoot in the same exposure with AE lock. LCD panel illumination time after the picture is taken.

Note that if you set a longer activation time, the battery become exhausted more quickly and the number of possible shots will be reduced.

To turn off the function's activation time midway, press the  button,  button or  button.

P.Fn-24 Illuminates the LCD panel during bulb exposures

- After the bulb exposure starts, press the <LCD panel illumination> button to illuminate the LCD panel until the bulb exposure ends.
- Convenient when you want to monitor the elapsed bulb exposure time.

Note that if you take bulb shots for long periods, the battery becomes exhausted more quickly and the number of possible shots will be reduced.

Cover/Table of Contents

Introduction

Downloading Images from the Camera, and Camera Settings

Working with Images in the ZoomBrowser EX

Remote Shooting in the EOS Capture

Setting the EOS 5D and EOS-1D Series Cameras

Troubleshooting and Uninstalling the Software

Index




P.Fn-25 Sets the default settings when the <CLEAR> button is ON

- You can use this function to select the default mode settings when you press the <CLEAR> button.
- Convenient when you want to instantly switch to frequently-used settings.


P.Fn-26 Shortened release time lag

- Normally, the shutter-release time lag is controlled for stability. This Personal Function eliminates this control. As a result, the shutter-release time lag can be reduced by as much as about 20 percent when the aperture needs to be stopped down by no more than 3 stops.
- This is effective when a shorter shutter-release time lag is more important than a stable shutter-release time lag.
- **This function is compatible with the EOS-1D Mark II N, EOS-1Ds Mark II and EOS-1D Mark II.**

 Since the difference is in 10-millisecond increments, the time lag may not feel any shorter.

P.Fn-27 Enables the electronic dial's function to be used in the reverse direction

- The electronic dial's rotational function can be reversed for selecting the AF point and setting the shutter speed and aperture.
- By matching the dial's rotation direction to the particular operation, the operation can feel more intuitive.

 When the main dial's rotational function is reversed, the horizontal AF point selection direction does not change.


P.Fn-28 Prevents exposure compensation with the Quick Control Dial

- The Quick Control Dial cannot be used to set exposure compensation.
- This prevents exposure compensation from being set accidentally while the AF point is being selected.


P.Fn-30 Enables Quick Control Dial switch to turn on/off Main Dial, too

- Setting the Quick Control Dial switch to <OFF> disables the Main and Quick Control Dials.
- **This function is compatible with the EOS-1D Mark II N, EOS-1Ds Mark II and EOS-1D Mark II.**

P.Fn-30 Enlargement mode

- Select which part of an image is enlarged.
 - If you take the shot on the camera with this function [ON], you can enlarge an image.
 - For more information on using this function on the camera, see "P.Fn-30 Enlarging the image" in the EOS-1Ds Instruction Manual.
 - **This function is compatible with the EOS-1Ds only.**
-  ● If you wish to enlarge an image, set P.Fn-30 to [ON] during shooting and playback. The image shot on the camera without setting P.Fn-30 to [ON] cannot be enlarged.
- The image shot on any camera other than the EOS-1Ds cannot be enlarged.

P.Fn-31 Add original decision data

- The data that shows whether or not the image is the original one can be added to the image. When selecting the display format of Shooting information (INFO), the icon showing the captured image with Original image verification data is displayed. For more details, refer to "Shooting Information Display" in the camera's Instruction Manual.
 - For the decision of the original image, you will need the dedicated accessory (optional).
 - **This function is compatible with the EOS-1D Mark II N, EOS-1Ds Mark II, EOS-1D Mark II and EOS-1Ds.**
-  The original decision data cannot be added to the JPEG or TIFF image converted from the RAW image.

Cover/Table of Contents

Introduction

1
Downloading Images from the Camera, and Camera Settings

2
Working with Images in the ZoomBrowser EX

3
Remote Shooting in the EOS Capture

4
Setting the EOS 5D and EOS-1D Series Cameras

5
Troubleshooting and Uninstalling the Software

Index



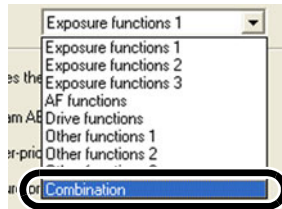
Checking, Saving, and Loading Personal Function Settings

You can check the specified Personal Functions and the status of whether or not the settings are applied to the camera. You can also save the settings on your computer and then load the saved settings and apply them to the camera.

1 Specify the Personal Functions (p.4-3 to p.4-8).

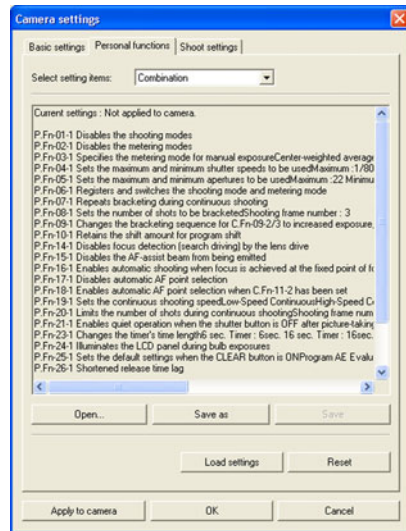
2 Select [Combination] from the list box.

- The [Combination] window appears.
- With the EOS-1Ds and EOS-1D, select the [Combination] tab.



3 Check the settings, save and load them.

- You can check the Personal Function settings and check if these settings are applied on the camera.



Saving the Settings

1 Click the [Save as] button.

- The [Save As] dialog box appears.



2 Select the destination folder, enter the file name, and then click the [Save] button.

- The specified Personal Function settings are saved.

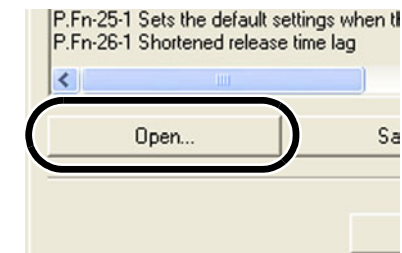
⚠ The Personal Function settings are not compatible with a camera other than the one the function was set.

- To update an existing file, click the [Save] button.
- Personal Function settings data saved in your computer is compatible with both Windows and Macintosh.

Loading the Settings

1 Click the [Open] button.

- The [Open] dialog box appears.



2 Open the folder containing the settings, select the file, and then click the [Open] button.

- The Personal Function settings data saved in that file are loaded.

Cover/Table of Contents

Introduction

Downloading Images from the Camera, and Camera Settings

Working with Images in the ZoomBrowser EX

Remote Shooting in the EOS Capture

Setting the EOS 5D and EOS-1D Series Cameras

Troubleshooting and Uninstalling the Software

Index



Shot Settings

You can specify various shot settings and then apply these settings to the camera.

1 Display the [Camera settings] dialog box (p.4-2).

2 Select the [Shoot settings] tab.

- The [Shoot settings] tab sheet appears.
- With the EOS-1Ds and EOS-1D, select the [Detailed Settings] tab.

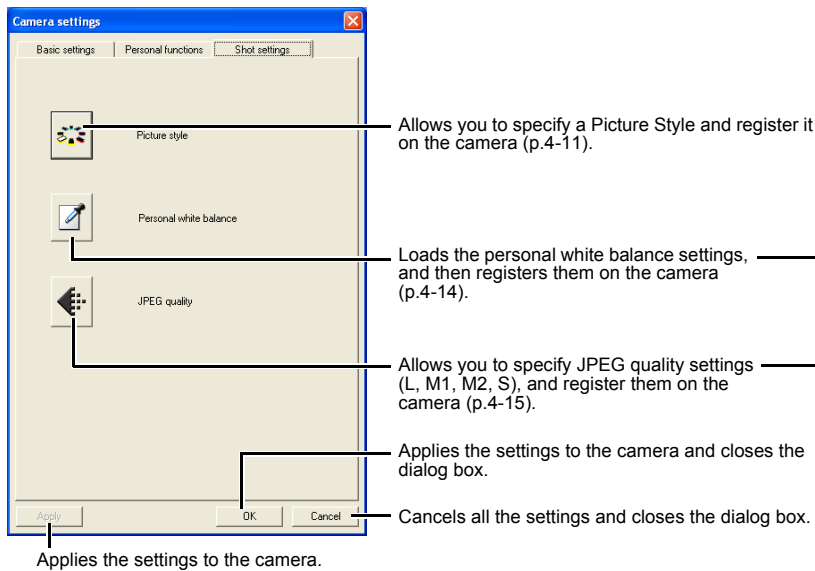


3 Click one of the buttons to display each dialog box and specify desired settings (p.4-11 to p.4-15).

4 Click the [OK] button.

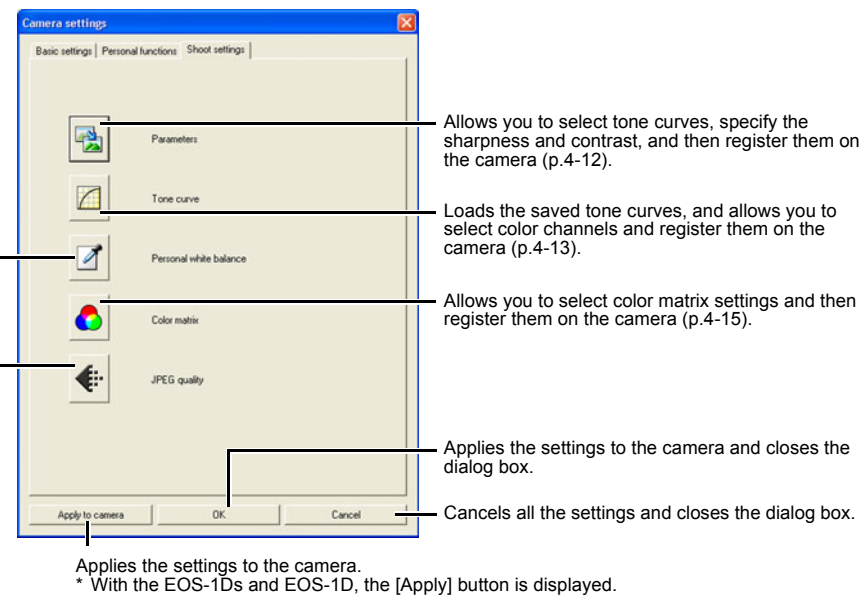
- The settings are applied to the camera and the [Camera settings] dialog box closes.

EOS-1D Mark II N and EOS 5D window



- With the EOS 5D, the [Personal white balance] and [JPEG quality] buttons are not displayed.

EOS-1Ds Mark II, EOS-1D Mark II, EOS-1Ds and EOS-1D window



- With the EOS-1Ds and EOS-1D, the [Tone curve], [Color matrix] and [JPEG quality] buttons are not displayed.

Cover/Table of Contents

Introduction

Downloading Images from the Camera, and Camera Settings

Working with Images in the ZoomBrowser EX

Remote Shooting in the EOS Capture

Setting the EOS 5D and EOS-1D Series Cameras

Troubleshooting and Uninstalling the Software

Index



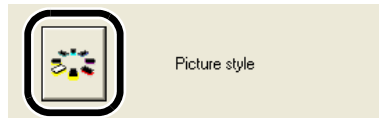
Picture Style

You can set a Picture Style as well as register in your camera a Picture Style downloaded from Canon's web site and saved on your computer, as a user setting.

- This function is compatible with the EOS-1D Mark II N and EOS 5D.

1 Click [Picture style] button (p.4-10).

→ The [Picture Style setting] dialog box appears.



2 Specify desired settings.

3 Click [Apply] button.

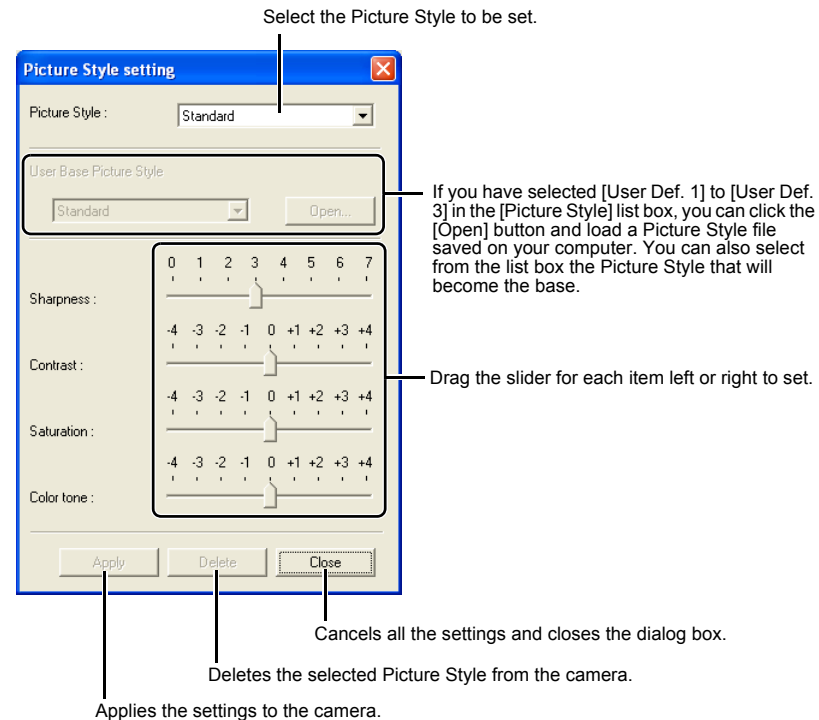
→ The [Confirm settings] dialog box appears.

4 Confirm the settings and click [OK] button.


→ The settings are applied to the camera.

5 Click [Close] button.

→ The [Picture Style setting] dialog box closes.



- You can register a maximum of 3 user settings in your camera.
- When you select [Monochrome] in the [Picture Style] and [User Base Picture Style] list boxes, the [Filter Effect] and [Toning Effect] list boxes appear.
- Refer to "Registering the Picture Style" in the camera's Instruction Manual for information about using the Picture Styles registered in the camera.

 A Picture Style file is a file that expands the Picture Style function. For detailed information on Picture Style, refer to Canon's web site.

Cover/Table of Contents

Introduction

Downloading Images from the Camera, and Camera Settings

Working with Images in the ZoomBrowser EX

Remote Shooting in the EOS Capture

Setting the EOS 5D and EOS-1D Series Cameras

Troubleshooting and Uninstalling the Software

Index



Specifying the Parameters

You can select tone curves, specify the sharpness and contrast, and then register up to 3 sets of these settings on the camera.

- For more information on setting the processing parameters on the camera, refer to “Setting the Processing Parameters” in the camera’s Instruction Manual.
- This function is compatible with the EOS-1Ds Mark II, EOS-1D Mark II, EOS-1Ds and EOS-1D.

1 Click the [Parameters] button (p.4-10).

→ The [Parameters settings] dialog box appears.

- With the EOS-1Ds and EOS-1D, click the [Add Set] button and in the dialog box that appears, select the set which will be added to the camera.

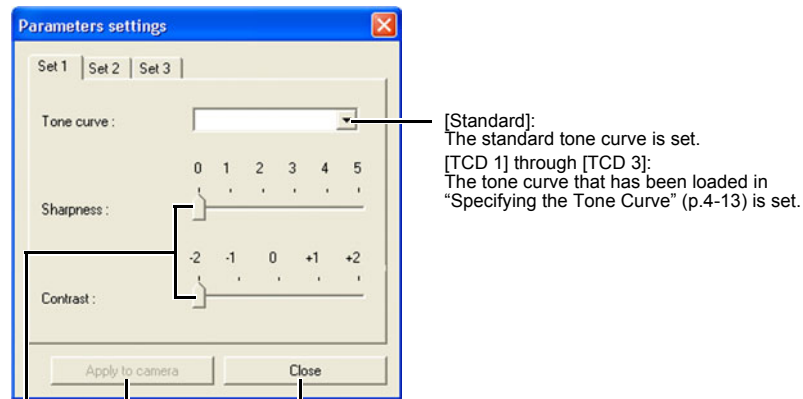


2 Select the [Set 1], [Set 2], or [Set 3] tab.



3 Specify desired settings.

→ With the EOS-1Ds Mark II and EOS-1D Mark II, the following dialog box appears.



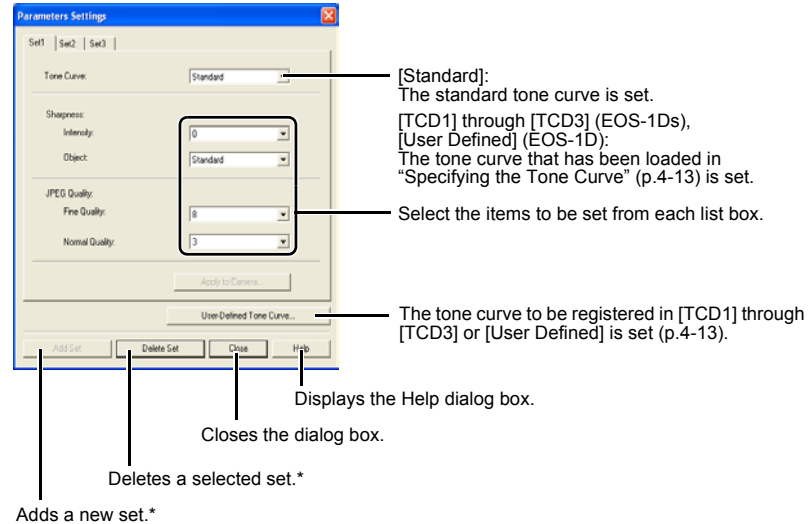
[Standard]:
The standard tone curve is set.
[TCD 1] through [TCD 3]:
The tone curve that has been loaded in “Specifying the Tone Curve” (p.4-13) is set.

Closes the dialog box.

Applies the settings to the camera.

Drag the slider left or right to specify the sharpness and contrast.

→ With the EOS-1Ds and EOS-1D, the following dialog box appears.



[Standard]:
The standard tone curve is set.
[TCD1] through [TCD3] (EOS-1Ds),
[User Defined] (EOS-1D):
The tone curve that has been loaded in “Specifying the Tone Curve” (p.4-13) is set.

Select the items to be set from each list box.

The tone curve to be registered in [TCD1] through [TCD3] or [User Defined] is set (p.4-13).

Displays the Help dialog box.

Closes the dialog box.

Deletes a selected set.*

Adds a new set.*

* Displayed when connected to the EOS-1D.

4 Click the [Apply to camera] button.

→ The [Confirm settings] dialog box appears.

5 Confirm the settings and click the [Yes] or [Apply to Camera] button.

→ The parameter is registered on the camera.

6 Click the [Close] button.

→ The [Parameters settings] dialog box closes.

Cover/Table of Contents

Introduction

Downloading Images from the Camera, and Camera Settings

Working with Images in the ZoomBrowser EX

Remote Shooting in the EOS Capture

Setting the EOS 5D and EOS-1D Series Cameras

Troubleshooting and Uninstalling the Software

Index



Specifying the Tone Curve

You can load saved tone curve files from a computer (p.2-13) and register up to 3 on the camera. You can also select the tone curve that has been loaded into the [TCD 1] through [TCD 3] tab sheets, from the list box shown in “Specifying the Parameters” (p.4-12).

- For more information on registering the tone curve ([TCD 1] through [TCD 3]) on the camera, refer to “Setting the Processing Parameters” in the camera’s Instruction Manual.
- **This function is compatible with the EOS-1Ds Mark II, EOS-1D Mark II, EOS-1Ds and EOS-1D.**
- **With the EOS-1D, only one tone curve can be registered.**

1 Click the [Tone curve] button (p.4-10).

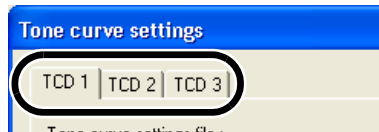
→ The [Tone curve settings] dialog box appears.

- With the EOS-1Ds and EOS-1D, click the [Parameters] button and then click the [User-Defined Tone Curve] button on the displayed [Parameters Settings] dialog box.



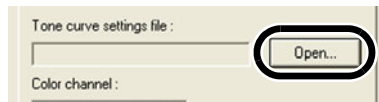
2 Select the [TCD 1], [TCD 2] or [TCD 3] tab.

- For the EOS-1D, proceed to step 3.



3 Click the [Open] button.

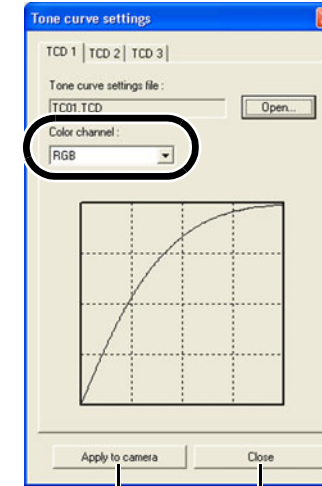
→ The [Open] dialog box appears.



4 Open the folder containing the tone curve, select a file, and then click the [Open] button

→ The tone curve is loaded.

5 Select a channel from the list and confirm.



Applies the settings to the camera.
Closes the dialog box.

6 Click the [Apply to camera] button.

→ The tone curve is registered on the camera.

7 Click the [Close] button.

→ The [Tone curve settings] dialog box closes.

Cover/Table of Contents

Introduction

Downloading Images from the Camera, and Camera Settings

Working with Images in the ZoomBrowser EX

Remote Shooting in the EOS Capture

Setting the EOS 5D and EOS-1D Series Cameras

Troubleshooting and Uninstalling the Software

Index



Specifying the Personal White Balance

You can load saved white balance file from a computer (p.2-13) and register up to 3 on the camera.

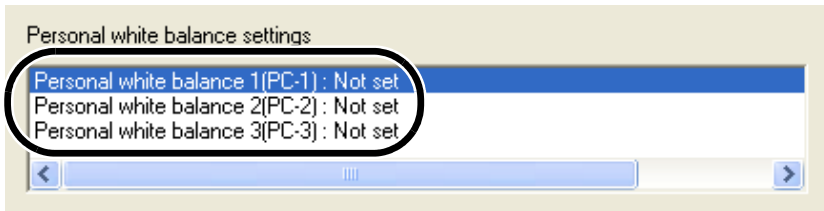
- When you upload a personal white balance setting to the camera, < PC-1 > to < PC-3 > is displayed on the rear LCD panel of the camera.
- For more information on setting the personal white balance on the camera, refer to “Selecting the White Balance” in the camera’s Instruction Manual.
- This function is compatible with the EOS-1D Mark II N, EOS-1Ds Mark II, EOS-1D Mark II, EOS-1Ds and EOS-1D.

1 Click the [Personal white balance] button (p.4-10).

→ The [Personal white balance settings] dialog box appears.

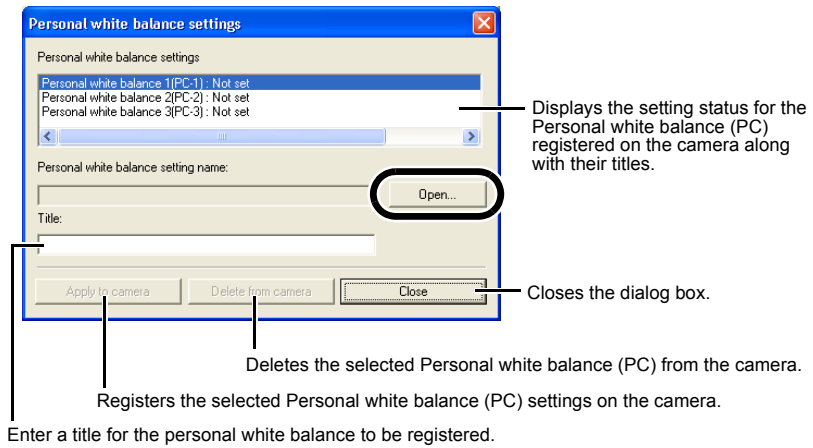


2 Select the Personal white balance (PC) to be registered from the list.



3 Click the [Open] or [Browse] button.

→ The [Open] dialog box appears.



4 Open the folder containing the saved white balance, select the file, and then click the [Open] button.

→ The white balance is loaded.

5 Enter a title in the [Title] or [Caption] input box.

6 Click the [Apply to camera] button.

→ The white balance is registered on the camera.

- To register another setting, repeat steps 2 to 6. You can register up to 3 settings (PC-1, PC-2 and PC-3).
- To delete a registered setting, select the Personal white balance (PC) from the list and click the [Delete from camera] button.

7 Click the [Close] button.

→ The [Personal white balance settings] dialog box closes.

Cover/Table of Contents

Introduction

Downloading Images from the Camera, and Camera Settings

Working with Images in the ZoomBrowser EX

Remote Shooting in the EOS Capture

Setting the EOS 5D and EOS-1D Series Cameras

Troubleshooting and Uninstalling the Software

Index



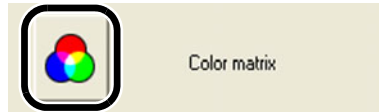
Specifying the Color Matrix

You can specify the color space, color saturation, and color tone, and then register up to 2 sets of these settings on the camera. You can also select the predetermined color matrix from the list box, which helps you to specify the settings.

- For more information on setting the color matrix on the camera, refer to “Selecting the Color Matrix” in the camera’s Instruction Manual.
- This function is compatible with the EOS-1Ds Mark II and EOS-1D Mark II.

1 Click the [Color matrix] button (p.4-10).

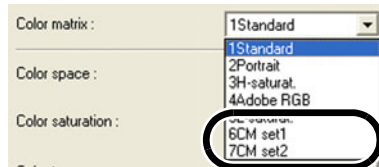
→ The [Color Matrix settings] dialog box appears.



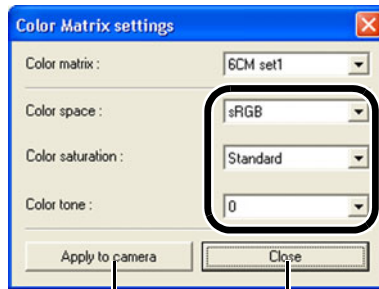
2 Select [CM set1] or [CM set2] from the list box.

→ This activates the [Color space], [Color saturation], and [Color tone] list boxes.

- If you select any color matrix setting other than [CM set1] or [CM set2], you cannot register the settings on the camera.



3 Select desired settings from the list boxes.



Closes the dialog box.
Applies the settings to the camera.

4 Click the [Apply to camera] button.

→ The color matrix is registered on the camera.

5 Click the [Close] button.

→ The [Color Matrix settings] dialog box closes.

Specifying the JPEG Quality

You can specify the JPEG quality for each of the sizes, L (Large), M1 (Middle 1), M2 (Middle 2), and S (Small), and then register the settings on the camera.

- This function is compatible with the EOS-1D Mark II N, EOS-1Ds Mark II and EOS-1D Mark II.

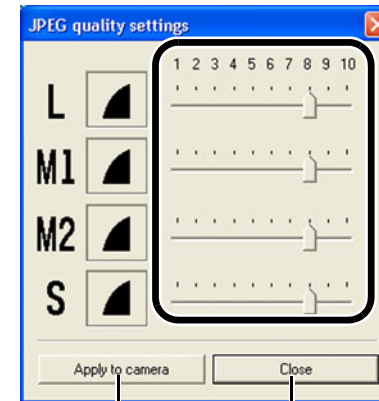
1 Click the [JPEG quality] button (p.4-10).

→ The [JPEG quality settings] dialog box appears.



2 Drag the slider left or right to adjust the JPEG quality.

- Higher values give a lower compression ratio and higher image quality for any size.



Closes the dialog box.
Applies the settings to the camera.

3 Click the [Apply to camera] button.

→ The JPEG quality is registered on the camera.

4 Click the [Close] button.

→ The [JPEG quality settings] dialog box closes.

Cover/Table of Contents

Introduction

Downloading Images from the Camera, and Camera Settings

Working with Images in the ZoomBrowser EX

Remote Shooting in the EOS Capture

Setting the EOS 5D and EOS-1D Series Cameras

Troubleshooting and Uninstalling the Software

Index



5 Troubleshooting and Uninstalling the Software

This chapter provides troubleshooting and explains how to uninstall the software.

Troubleshooting

If you could not complete the installation correctly, or communication between the camera and computer fails, or you connected the camera and computer before installing the software, consult the items described below.

- For instructions on installing, refer to the “Software Guide” supplied with your camera.

Installation failed.

- **If you are using Windows XP Professional or Windows 2000, are you using the computer under a user setting other than [Computer administrator] or [Administrator]?**
 - You cannot install software if a user setting other than [Computer administrator] or [Administrator] is selected. Select the [Computer administrator] user setting in Windows XP Professional or the [Administrator] user setting in Windows 2000. For detailed information on selecting the user setting, refer to the computer User’s Manual.
- **Is the cable firmly plugged into its socket?**
 - To complete the installation, ensure that the plugs on the dedicated cable are securely plugged into the ports on the camera and computer when you connect the camera to your computer.
- **Are the camera and computer set up correctly for communication?**
 - Is the camera’s power switch set to <ON>?
 - Even when the camera’s power switch is set to <ON>, operation of the Auto power off function will automatically switch the camera off. To prevent this, set the Auto power off function to [Off]. (Refer to the camera’s Instruction Manual.)
- **Does the [Add New Hardware Wizard] ([Found New Hardware Wizard] in Windows 2000) dialog box appear during installation?**
 - Click the [Cancel] button, disconnect the dedicated cable, and then repeat the installation procedure from the beginning.
- **Doesn’t the installer panel appear?**
 - Use the following procedure to display the installer panel.
Click the [Start] button ► [My Computer]. (In versions other than Windows XP, double-click [My Computer] on the desktop.) ► right-click the CD-ROM drive containing the CD ► select [Open] from the menu that appears ► double-click the icon on the right.



- Click on the item to display its page.

Uninstalling the Software	5-3
Uninstalling the Software	5-3
Uninstalling the Driver	5-3
Index	5-4

I have installed the software but the camera and computer cannot communicate.

- **Is the driver installed?**
 - The driver is required for communication between the camera and computer. When you want to communicate between the camera and computer, be sure to install the driver shown below appropriate to your windows.
 - Windows XP/Windows Me: WIA Driver
 - Windows 2000/Windows 98SE: TWAIN Driver
- **Have you installed the WIA Driver or TWAIN Driver?**
 - Even if you have installed the WIA Driver or TWAIN Driver, installation is not completed unless the camera is connected to the computer. Insert the Solution Disk into the CD-ROM drive, install the WIA Driver or TWAIN Driver, and then connect the camera to your computer.
- **Does your computer comply with these requirements?**
 - **Cameras other than EOS-1D series cameras**
 - Computer with Windows XP, Windows 2000, Windows Me or Windows 98SE preinstalled and equipped with a USB port.
 - * Operation is not guaranteed when a connection is used on computer systems other than those listed above.
 - **EOS-1D series cameras**
 - Computer with Windows XP, Windows 2000, Windows Me, or Windows 98SE preinstalled and equipped with an IEEE1394 port.
 - * Operation is not guaranteed when a connection is used on computer systems other than those listed above.
- **Are the camera and computer connected correctly?**
 - Connect the camera to your computer correctly using the dedicated cable (p.1-2).
- **Have you made the correct communication settings for cameras that require communication settings?**
 - Set the camera’s communication mode to [PC connect.] or [PC connection] for the EOS 5D and EOS 350D DIGITAL, and to [Normal] for the EOS 20D, EOS 300D DIGITAL and EOS 10D (p.1-1).
With the EOS 10D, you must also change the firmware to version 2.0.0 or later. For details on changing, refer to the Canon web site.

Cover/Table of Contents

Introduction

Downloading Images from the Camera, and Camera Settings

Working with Images in the ZoomBrowser EX

Remote Shooting in the EOS Capture

Setting the EOS 5D and EOS-1D Series Cameras

Troubleshooting and Uninstalling the Software

Index



● Is there sufficient charge left in the camera battery?

→ Your computer does not supply power to the camera. Connect the AC Adapter Kit (optional) for the EOS 5D, EOS 350D DIGITAL, EOS 20D, EOS 300D DIGITAL and EOS 10D, the DC Coupler supplied with the camera for the EOS D60 and EOS D30, and the DC Coupler Kit supplied with the camera for the EOS-1D series cameras. Alternatively, insert a charged battery and connect your computer and camera.

● Do you have more than one camera connected to your computer?

If you connect more than one camera to the same computer, the driver and camera may not operate normally.

→ Exit the software and disconnect all the dedicated cables. Then connect only one camera to the same computer again.

● Is the driver operating normally?

Connect the camera to your computer with the dedicated cable and set the camera's power switch to <ON> and open [Device Manager].

Click the plus symbol [+] to the left of [Imaging devices] and check that the connected camera is displayed.

→ If the connected camera is not displayed, the driver is not operating normally.

Briefly disconnect and then reconnect the dedicated cable, ensuring that the connection is secure. If the connected camera still does not appear, use the following procedure to re-install the driver.

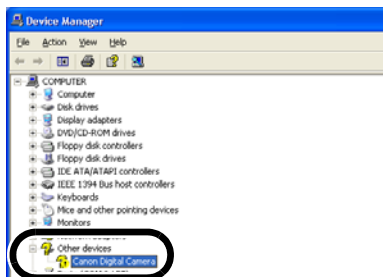
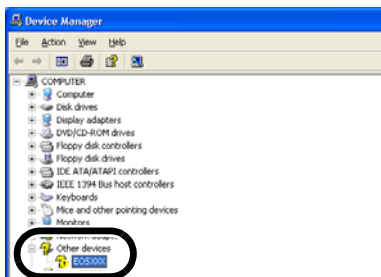
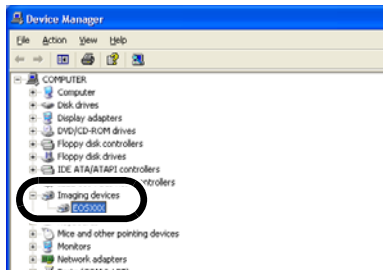
- 1 Disconnect the dedicated cable and delete the driver (p.5-3).
- 2 Re-install the driver.

→ When the [X], [!] or [?] symbol is displayed beside the connected camera, part of the driver is missing or corrupted. Use the following procedure to re-install the driver.

- 1 Delete the camera displayed in [Imaging devices].
- 2 Disconnect the dedicated cable and delete the driver (p.5-3).
- 3 Re-install the driver.

● Is the driver installed correctly?

→ Connect the camera to your computer with the dedicated cable and set the camera's power switch to <ON> and open [Device Manager]. Click the plus symbol [+] to the left of [Other devices] or [Unknown devices] and check whether the connected camera or [Canon Digital Camera] is displayed.



→ If the connected camera or [Canon Digital Camera] is displayed in [Other devices] or [Unknown devices], the driver was not installed correctly. Use the following procedure to re-install the driver.

- 1 Delete the camera or [Canon Digital Camera] displayed in [Other devices] or [Unknown devices].
- 2 Disconnect the dedicated cable and delete the driver (p.5-3).
- 3 Re-install the driver.

I connected the camera to the computer before installing the software

● Did you set the camera's power switch to <ON>?

→ If you did not set the camera's power switch to <ON>, proceed as follows:

- 1 Disconnect the dedicated cable from the camera and computer.
- 2 Install the Solution Disk software on your computer using the correct installation procedure and then connect the camera to your computer to complete the installation.

→ If you set the camera's power switch to <ON>, proceed as follows:

- 1 If [Found New Hardware Wizard] or any other dialog boxes appear, click the [Cancel] buttons to cancel all the dialog boxes.
- 2 Set the camera's power switch to <OFF>.
- 3 Disconnect the dedicated cable from the camera and computer.
- 4 Install the Solution Disk software on your computer using the correct installation procedure and then connect the camera to your computer to complete the installation.

To Display the Device Manager

● Windows XP

→ Click the [Start] button ► select [Control Panel] ► [Performance and Maintenance] ► [See basic information about your computer]. Then select the [Hardware] tab and click the [Device Manager] button.

● Windows 2000

→ Click the [Start] button ► select [Settings] ► [Control Panel]. Then double-click the [System] icon to open and select the [Hardware] tab and click the [Device Manager] button.

● Windows Me and Windows 98SE

→ Click the [Start] button ► select [Settings] ► [Control Panel]. Then double-click the [System] icon to open and select the [Device Manager] tab.

Cover/Table of Contents

Introduction

Downloading Images from the Camera, and Camera Settings

Working with Images in the ZoomBrowser EX

Remote Shooting in the EOS Capture

Setting the EOS 5D and EOS-1D Series Cameras

Troubleshooting and Uninstalling the Software

Index



Uninstalling the Software

- Before beginning the uninstallation, exit all programs you are using and disconnect the dedicated cable from your computer.

Uninstalling the Software

The following explanation uses the procedures for uninstalling the ZoomBrowser EX as an example for uninstalling other programs as well.

- For Windows XP Professional or Windows 2000, log in using computer Administrator privileges.
- Before beginning the uninstallation, exit all programs you are using and disconnect the dedicated cable from your computer.
- To prevent computer malfunctions, always restart your computer after you have uninstalled the software. Re-installing the software without first restarting your computer is likely to result in computer malfunctions.

1 Click the [Start] button ► select [All Programs] ([Programs] in versions other than Windows XP) ► [Canon Utilities] ► [ZoomBrowser EX] ► [ZoomBrowser EX Uninstall].

2 Proceed with the uninstallation as directed by the on-screen messages.

→ Software is uninstalled.

Uninstalling the Driver

This section explains how to uninstall the EOS-1D Mark II N and EOS 5D driver. The EOS 350D DIGITAL, EOS-1Ds Mark II and EOS 20D drivers can be deleted with the same operation. Refer to the software Instruction Manual supplied with the camera about deleting drivers in cameras other than those mentioned above.

- For Windows XP Professional or Windows 2000, log in using computer Administrator privileges.
- Before beginning the uninstallation, exit all programs you are using and disconnect the dedicated cable from your computer.

1 Uninstall [EOS XXX WIA Driver] or [EOS XXX TWAIN Driver].

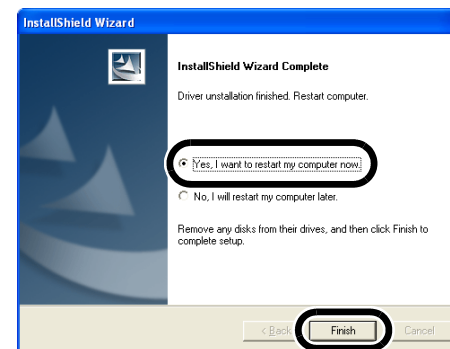
- Your camera model is displayed in EOS XXX.
- For Windows XP or Windows Me, click the [Start] button ► select [All Programs] ([Programs] in Windows Me) ► [Canon Utilities] ► [EOS XXX WIA Driver] ► [WIA Driver Uninstall].
- For Windows 2000 or Windows 98SE, click the [Start] button ► select [Programs] ► [Canon Utilities] ► [EOS XXX TWAIN Driver] ► [TWAIN Driver Uninstall].

2 Proceed with the uninstallation as directed by the on-screen messages.

→ The driver is uninstalled.

3 Restart the computer.

- When the dialog box on the right appears, select the [Yes, I want to restart my computer now.] and click [Finish] button.
- When the computer is restarted, uninstalling of the driver is completed.



Cover/Table of Contents

Introduction

Downloading Images from the Camera, and Camera Settings

Working with Images in the ZoomBrowser EX

Remote Shooting in the EOS Capture

Setting the EOS 5D and EOS-1D Series Cameras

Troubleshooting and Uninstalling the Software

Index



Index

C

- Camera Settings (CameraWindow)
 - Initializing the memory card 1-5, 4-2
 - Specifying the Date and Time 1-5, 4-2
- Camera Settings (EOS Capture) 3-3
 - Specifying the Save Destination 3-4
 - White Balance Adjustment 3-4
- Classifying the Images into Folders 2-10
- Connecting the Camera to Your Computer 1-2

D

- Displaying the Top Page or Photo Album Page of CANON iMAGE GATEWAY 2-19
- Downloading Images from Your Camera . 1-4
 - Downloading All the Images in a Single Operation 1-4
 - Downloading Selected Images 1-4
- Downloading Images Using Your Card Reader 1-5
- Downloading JPEG Images Using the PTP Function 1-6

E

- Editing Images 2-11
- EOS Capture Main Window 3-2
- Exporting an Image as a Screen Saver .. 2-15
- Exporting an Image as Wallpaper 2-15
- Exporting Shooting Properties 2-14
- Exporting Still Images 2-14

I

- Image Display and Folder Handling 2-3
- Image Quality Adjustment Window 2-13

M

- Main Features 0-2
- Merging Images 2-11
- Modifying ZoomBrowser EX Settings 2-20
 - Specifying Preferences 2-20

- Task Button Display Settings 2-20

P

- Personal Function Settings 4-3
 - Checking, Saving, and Loading Personal Function Settings 4-9
 - Description of Personal Functions 4-4
- Printing Images 2-16
 - Index Printing 2-17
 - Layout Printing 2-17
 - One Photo per Page Printing 2-16
 - Printing Using Other Software 2-18
 - Printing with Easy-PhotoPrint 2-18
- Processing RAW Images 2-12

R

- RAW Image Task Main Window 2-13
- Registering an Image in CANON iMAGE GATEWAY 2-20
- Registering as a Member of CANON iMAGE GATEWAY or Changing the Connection Information 2-19
- Remote Shooting 3-2
 - Interval Timer Shooting 3-3
 - Single-frame Shooting 3-2
 - Timer Shooting 3-3
- Renaming the Multiple Files 2-9

S

- Searching Images 2-10
- Selecting the Image 2-4, 2-5, 2-6
- Selecting the Image Display Mode 2-4
 - Preview Mode 2-6
 - Properties Window 2-8
 - Scroll Mode 2-5
 - Viewer Window 2-7
 - Zoom Mode 2-4
- Sending an Image by E-mail 2-19
- Setting the Communication Mode 1-1

- Shot Settings 4-10
 - Picture Style 4-11
 - Specifying the Color Matrix 4-15
 - Specifying the JPEG Quality 4-15
 - Specifying the Parameters 4-12
 - Specifying the Personal White Balance 4-14
 - Specifying the Tone Curve 4-13
- Software Configuration 0-3
- Starting the ZoomBrowser EX 2-2
- Supported Images 0-2
- System Requirements 0-2

U

- Uninstalling the Software 5-3
 - Driver 5-3
 - Software 5-3
- Using CANON iMAGE GATEWAY 2-19

V

- Viewing the Images as a Slide Show 2-8

W

- Writing Images to a CD 2-16

Z

- ZoomBrowser EX Main Window 2-2

Cover/Table of Contents

Introduction

Downloading Images from the Camera, and Camera Settings

Working with Images in the ZoomBrowser EX

Remote Shooting in the EOS Capture

Setting the EOS 5D and EOS-1D Series Cameras

Troubleshooting and Uninstalling the Software

Index

