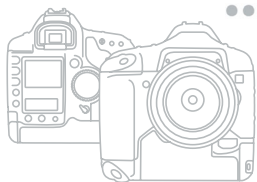


you can  
**Canon**

CANON  
**iMAGE**  
GATEWAY

REGISTRATION  
GUIDE



## **CANON iMAGE GATEWAY**

### **Open up a world of online digital photo fun and creativity**

Presenting CANON iMAGE GATEWAY - the brilliantly creative way to get the best from your Canon digital camera and the internet.

An exciting online service, CANON iMAGE GATEWAY lets you create and send beautiful digital photo albums in just a few clicks.

#### **Create and send fun online albums**

Use CANON iMAGE GATEWAY to create and send brilliant online photo albums. Build your own albums around themes such as birthdays, holidays and celebrations, add your own sound files or commentaries and more. Then email the results to friends and family so they can see and share them, page by page, online.

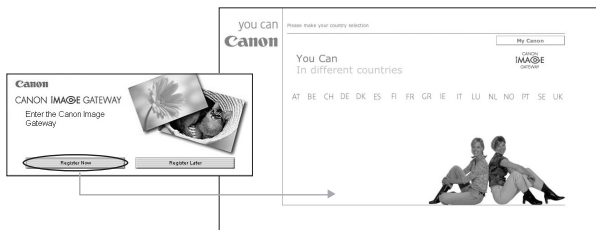
#### **Order fantastic photo prints\***

With CANON iMAGE GATEWAY you can order top quality photo prints from your online albums, 24/7. Just select your pictures, enter your payment details and relax - your brilliant prints will be mailed to you and your chosen recipients, so everyone can enjoy them.

\* May not be available at time of print, please check your local CANON iMAGE GATEWAY site for details

## Accessing CANON iMAGE GATEWAY from your Canon Camera's Software ZoomBrowser EX/ImageBrowser\*\*

The first time you open ZoomBrowser EX on your PC or ImageBrowser on your Macintosh, after installing it, you will see the following screen.



If you wish to register for CANON iMAGE GATEWAY, click the **Register Now** button, you will then be taken to the CANON iMAGE GATEWAY registration page and will need to follow the instructions given to register.

If you do not wish to register, please click the **Register Later** button. You can register later via the CANON iMAGE GATEWAY menu contained in the ZoomBrowser EX **Internet**, or your ImageBrowser **Internet** toolbar menu. (Please refer to the section on **Registering for CANON iMAGE GATEWAY from ZoomBrowser EX/ImageBrowser**).

Note: You must register before you are able to use the CANON iMAGE GATEWAY site.

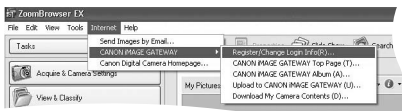
\*\*The CANON iMAGE GATEWAY service is currently only available in the European countries listed below:  
United Kingdom, Deutschland, France, Italia, Suomi, Danmark, Nederland, Sverige, Schweiz, Norge, Eire, Belgie, Österreich, España, Luxembourg, Ελλάδα, Portugal

# 1 Registering for CANON iMAGE GATEWAY from ZoomBrowser EX

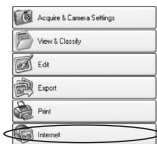
If you have selected **Register Later** from the splash screen and would like to register for CANON iMAGE GATEWAY, please follow the instructions below.

You can register via the **CANON iMAGE GATEWAY** menu contained in the ZoomBrowser EX Internet task bar menu, or by selecting the **Internet button** on the **Task Area**.

## ZoomBrowser EX Toolbar Menu



## Task Area

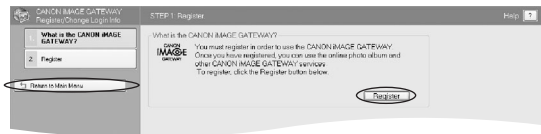


## Internet Task Area



- i) Click on CANON iMAGE GATEWAY **Register/Change Login Info** from the **Internet Task Area** or by selecting from the Internet toolbar menu.

You can select to **Register** from the **Task Area** or below the description of CANON iMAGE GATEWAY.



- ii) Once you click on **Register**, a web page will open and it will start an Internet session so that you can complete online registration for accessing CANON iMAGE GATEWAY.

You will then need to click on the **Registration** button in CANON iMAGE GATEWAY and follow the instructions given to **Register**. You will need to provide a valid email address for registration. Upon successful registration, a username and password will be sent to your email address.

Once you are registered, you can use the **Internet** button on the **Task Area** or toolbar menu to access the CANON iMAGE GATEWAY site and services from ZoomBrowser EX.

Once you have registered you will then be able to add additional products to your account from the CANON iMAGE GATEWAY **Register/Change Login Info Task**.

**Please Note:** You can register multiple products on your account, but only one account per email address is possible.

- iii) **Edit Connection**



You can change your user connection information to CANON iMAGE GATEWAY. If you have changed your username and password in the CANON iMAGE GATEWAY site, you will then be able to enter your new username and password in this section, to enable you to connect to CANON iMAGE GATEWAY.

**Please note Changes to your username and password are only possible through the CANON iMAGE GATEWAY site and not through ZoomBrowser EX.**

Note: You must register before you can access **CANON iMAGE GATEWAY** and other functions.

## 2 Using CANON iIMAGE GATEWAY from your ZoomBrowser EX Software (Windows)

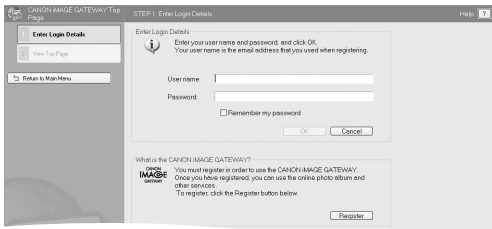
The ZoomBrowser EX Internet Menu allows you to:

### i) Email Images

Please refer to your Software Starter Guide for instructions on how to email images.

### ii) View your CANON iIMAGE GATEWAY Top Page

In the **Task Area** or from the toolbar menu, select **Internet**, then select **CANON iIMAGE GATEWAY Top Page**.



### iii) Enter Your Login Details

Enter your CANON iIMAGE GATEWAY login (username and password details that you were sent following registration) in the boxes provided.

These details will be used in future when uploading images from ZoomBrowser EX.

Selecting the **Remember my password** checkbox will enable ZoomBrowser EX to store your CANON iIMAGE GATEWAY password so you will not need to re-enter these details each time you wish to access CANON iIMAGE GATEWAY.

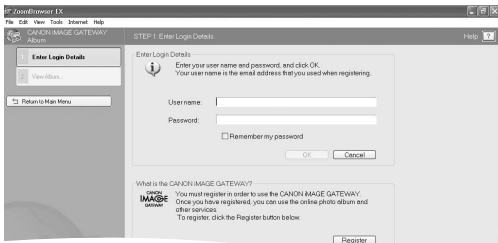
### iv) View Top Page

Click this button to log on to your workspace area on the CANON iIMAGE GATEWAY.

**If you are not already registered for the CANON iIMAGE GATEWAY, you can click the Register button as previously explained in (Registering for CANON iIMAGE GATEWAY from ZoomBrowser EX.)**

### 3 View your Album

In the **Task Area** or from the toolbar menu, select **Internet**, then select **CANON iMAGE GATEWAY Album**.



i) **Enter Your Login Details**

Enter your CANON iMAGE GATEWAY login (username and password) details in the boxes provided.

ii) **View Album**

Click this button to log on to your album on the CANON iMAGE GATEWAY and view your images.

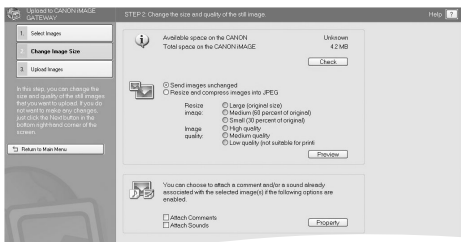
**If you are not already registered for the CANON iMAGE GATEWAY, you can click the Register button as previously explained in (Registering for CANON iMAGE GATEWAY from ZoomBrowser EX.)**

## 4 Upload images to CANON iMAGE GATEWAY

In the **Task Area** or from the toolbar menu, select **Internet**, and then select **Upload to CANON iMAGE GATEWAY**.

You can use this task to upload to CANON iMAGE GATEWAY still images that have been shot with a Canon camera.

Select **Upload Images to CANON iMAGE GATEWAY** on the **Internet** menu in the **Task Area**.



### i) Select Images

Click this step to select the image(s) you want to upload. JPEG image files can be uploaded. You cannot upload RAW images.

### Change Image Size

- ii) Click this button to change the size of the images to be uploaded and also to add comments and sounds to the images you wish to upload. The images you have selected for upload appear at the bottom of the page.



### iii) Attach Comments

Select this option if you would like to upload an image with comments attached. If no comment has been attached to the image, you can add your comments in the Properties Window that appears when you click the **Properties** button.

### iv) Attach Sounds

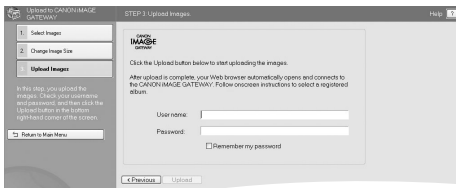
Select this option if you would like to upload an image with a sound file attached to it. If no sound file has been attached to the image, you can add one by clicking the **Properties** button.


**Please Note:** This task does not support images larger than 5,000 x 5,000 pixels, RAW images and Images with file names longer than 64 bytes.

### v) Upload Images

Enter your CANON iMAGE GATEWAY login (username and password) details in the boxes provided.

Click the **Upload** button to start the upload process.



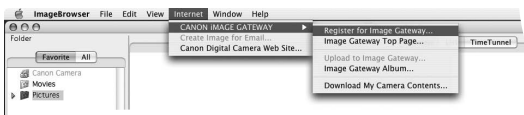
Please click on  icon for further information on Uploading Images and changing the Still Image Size.

# 1 Registering for CANON iMAGE GATEWAY from ImageBrowser

If you have selected **Register Later** from the splash screen and would like to register for **CANON iMAGE GATEWAY**, please follow the instructions below.

You can register via the CANON iMAGE GATEWAY menu contained in the ImageBrowser **Internet** toolbar menu.

## ImageBrowser Toolbar Menu



- i) Click on **Register for Image Gateway** from the **Internet** toolbar menu.
- ii) Once you click on **Register**, a web page will open and it will start an Internet session so that you can complete online registration for accessing CANON iMAGE GATEWAY.

You will then need to click on the **Registration** button in CANON iMAGE GATEWAY and follow the instructions given to register. You will need to provide a valid email address for registration. Upon successful registration, a username and password will be sent to your email address.

Once you are registered, you can use the **Internet** toolbar menu to access the CANON iMAGE GATEWAY site and services from ImageBrowser.

**Please Note:** You can register multiple products on your account, but only one account per email address is possible.

## 2 View your CANON iMAGE GATEWAY Top Page

From the toolbar menu, select **Internet**, then select **Image Gateway Top Page**.



Enter User name and Password

User Name:

Password:

Remember my password

Note: Register your membership to obtain User name and Password in advance.

Cancel OK

### i) Enter Your Login Details

Enter your CANON iMAGE GATEWAY login (username and password details that you were sent following registration) in the boxes provided and click OK.

These details will be used in future when uploading images from ImageBrowser.

Selecting the **Remember my password** checkbox will enable ImageBrowser to store your CANON iMAGE GATEWAY password so you will not need to re-enter these details each time you wish to access CANON iMAGE GATEWAY.

### 3 Upload images to CANON IMAGE GATEWAY

From the toolbar menu select **Internet**, then select **Upload to Image Gateway**.

You can use this task to upload to CANON iMAGE GATEWAY still images that have been shot with a Canon camera.

i) **Select Your Images**

Select the still image(s) you want to upload.

JPEG image files can be uploaded. You cannot upload RAW images.

ii) **Enter Login Details**

Enter your CANON iMAGE GATEWAY login (username and password) details in the boxes provided.

Click the **Next** button to continue or select the **Cancel** button to exit the upload process.

Enter Login Details

Enter Login Details

User Name:

Password:

Remember my password

Note: Register your membership to obtain User name and Password in advance.

Cancel Next >

### iii) Attach Sounds and Comments

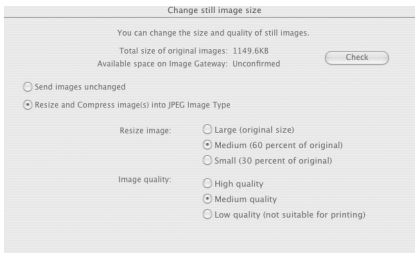
You can attach sounds or comments to upload with your images.



Click **Next** to continue, click **Back** to go to the previous step, or **Cancel** to exit the upload process.

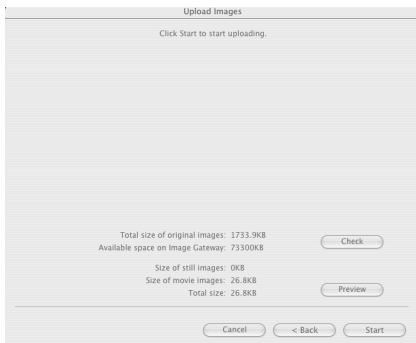
### iv) Change Still Image Size

You can then choose to change the size of the images to be uploaded.



## v) Upload Images

Click this button to start the upload process.



Click **Next** to continue, click **Back** to go to the previous step, or **Cancel** to exit the upload process.

## 4 View your Album

From the toolbar menu, select **Internet**, then select **ImageGateway Album**.

### Enter Login Details

Enter your Canon Image Gateway login (username and password) details in the boxes provided and click OK.

## Log-on and make the most of CANON iMAGE GATEWAY

For more information about CANON iMAGE GATEWAY, to find out how to make the most of this free service or to take the guided tour of CANON iMAGE GATEWAY, visit [www.cig.canon-europe.com](http://www.cig.canon-europe.com)

Here you can make the most of your digital camera and the internet, with exciting features such as...

- **Online albums**
- **Photo sharing**
- **Fast prints from your digital photographs**

CANON  
**iMAGE**  
GATEWAY

CANON  
**iMAGE**  
GATEWAY

**Canon Inc.**

30-2, Shimomaruko 3-Chome,  
Ohta-Ku, Tokyo 146-8501,  
Japan  
[www.canon.com](http://www.canon.com)

Europe, Africa and Middle East

**Canon Europa N.V.**

P.O.Box 2262, 1180 EG Amstelveen,  
The Netherlands  
[www.canon-europe.com](http://www.canon-europe.com)

CIG\_DSLR\_1-0EN

you can  
**Canon**