

EditPlus Online Manual

Overview

[What is EditPlus?](#)

[What's new](#)

[License agreement](#)

[How to install/remove](#)

[How to register](#)

[Feedback and support](#)

Features

[Syntax highlighting](#)

[Internet features](#)

[HTML Toolbar](#)

[Document selector](#)

[User tools](#)

[Auto completion](#)

[Cliptext window](#)

[Document template](#)

[Other features](#)

Commands

[File menu](#)

[Edit menu](#)

[View menu](#)

[Search menu](#)

[Document menu](#)

[Browser menu](#)

[Project menu](#)

[Tools menu](#)

[Window menu](#)

[Help menu](#)

[Cliptext list box popup menu](#)

[Cliptext combo box popup menu](#)

[Directory window popup menu](#)

[Output window popup menu](#)

Other references

[Command-line options](#)

What is EditPlus?



EditPlus is an Internet-ready 32-bit **Text editor**, **HTML editor** and **Programmer's editor** for Windows. While it can serve as a good replacement for Notepad, it also offers many powerful features for Web page authors and programmers.

- Syntax highlighting for HTML, CSS, PHP, ASP, Perl, C/C++, Java, JavaScript and VBScript. Also, it can be extended for other programming languages based on custom syntax files.
- Seamless Web browser for previewing HTML pages, and FTP commands for uploading local files to FTP server.
- Other features include HTML toolbar, user tools, line number, ruler, URL highlighting, auto-completion, cliptext, column selection, powerful search and replace, multiple undo/redo, spell checker, customizable keyboard shortcuts, and more.

See also:

[Syntax highlighting](#)

[Internet features](#)

[HTML Toolbar](#)

[Document Selector](#)

[User tools](#)

[Auto-completion](#)

[Cliptext window](#)

[Document template](#)

[Other features](#)

What's New

Version 2.12

<feature>

- * 'Use font language for Unicode and IME conversion' option (Preferences->Fonts).
- * Syntax highlighting for C/C++ numbers.
- * Syntax highlighting for C#.
- * 'Current file directory' option (Find in Files).
- * 'Matching Brace' option for displaying of matching brace (View menu).
- * 'Set Marker' button on the Find dialog box.
- * 'Cut/Copy/Delete Marked Lines' command (Edit->Others).
- * 'File Path Name' command (Edit->Insert).
- * Color Picker displays selected color code in current document.
- * Recent Directory command (Directory Window).
- * 'Files of type' option on Open Remote dialog box.
- * 'Always apply word wrap' option (Preferences->Print).
- * Toolbar buttons for 'Sort', 'Save As', 'Line Comment/Uncomment', 'Line Breaks'.
- * 'Paste as Column' command (Edit->Others).
- * Displays server name in the remote file path.
- * 'Close dialog after transfer' option on Save As Remote, Upload, Upload Multiple.

<fix>

- * 'Begin/End Select' and 'Begin/End Column' commands were not exclusive.
- * In word wrap mode, pressing Enter key could cause program crash in some case.
- * Fixes a bug with Recent Files list.
- * Find multiple lines in word wrap mode caused program crash.
- * 'Reformat' command did not work with single line.
- * 'Full Screen' command did not work correctly with multiple monitors.
- * 'Use temporary file in browser preview' option did not regard file extension.
- * Insert Image Tag command could not recognize .jpeg and .jpe file extension.
- * 'Begin/End Column' command did not work correctly in some cases
- * 'Wrap at format column number' option caused printing always in word wrap mode.
- * Word wrap was not correct when changing window size.
- * In multiple panes, screen update for block comment was not correct.
- * 'Reload working files' option did not restore read-only status.
- * Canceling FTP command sometimes caused program crash.
- * Window List and Function List location were not preserved between sessions.
- * Keystroke recording did not work with 'Line Comment'/'Line Uncomment' command.
- * Aligns line and column number to the right on the Status Bar.
- * Sort status of cliptext was not saved.

EditPlus Version 2 License Agreement

NO WARRANTY

EDITPLUS IS SOLD "AS IS" AND WITHOUT ANY WARRANTY AS TO MERCHANTABILITY OR FITNESS FOR A PARTICULAR PURPOSE OR ANY OTHER WARRANTIES EITHER EXPRESSED OR IMPLIED. THE AUTHOR WILL NOT BE LIABLE FOR DATA LOSS, DAMAGES, LOSS OF PROFITS OR ANY OTHER KIND OF LOSS WHILE USING OR MISUSING THIS SOFTWARE.

Evaluation and Registration

EditPlus is not free software. You may use this software for evaluation purposes without charge for a period of 30 days. If you use this software after the 30 day evaluation period, you must pay registration fee.

Distribution of the evaluation version

You may copy the evaluation version of this software and documentation as you wish, and give exact copies of the original evaluation version to anyone, and distribute the evaluation version of the software and documentation in its unmodified form via electronic means. But you should not charge or requesting donations for any such copies however made and from distributing the software and/or documentation with other products without the author's written permission.

Registered version

One registered copy of EditPlus may either be used by a single person who uses the software personally on one or more computers, or installed on a single workstation used non-simultaneously by multiple people, but not both. You may access the registered version of EditPlus through a network, provided that you have obtained individual licenses for the software covering all workstations that will access the software through the network.

How to Install/Remove

System requirement

Windows 95/98/Me/NT4/2000/XP or higher.
IE 3 or higher for browser feature (optional).

Installation

If you downloaded a self-extracting setup file (eppxx.exe), just run the executable.

If you downloaded a zip file (eppxx.zip), extract it to a temporary directory, then execute SETUP_EP.EXE.

Spell checker

You can download spell checker from our web site.

<http://www.editplus.com/download.html>

Remove

Run 'Uninstall' on the EditPlus Start Menu folder or open 'Add/Remove Programs' in Control Panel and double-click 'EditPlus 2' in the list box.

How to register

EditPlus is distributed as **Shareware**. You can freely download and try it for 30 days. If you find it useful and decide to keep it over 30-day evaluation period, you should pay the registration fee. See also [License agreement](#).

The registration of EditPlus Version 2 costs **\$30** per user.

How To Order

- **Please visit our ordering web site:**
<http://www.editplus.com/register.html>

For more information, please contact <sales@editplus.com>.

Registration Benefits

- Full license to use the software beyond the 30-day evaluation.
- Personal reg code to unlock your copy into the registered version.
- Free minor upgrades (e.g. 2.0 -> 2.1).
- Discount for major upgrades (e.g. 2.0 -> 3.0).
- Free technical support by e-mail.

Feedback and Support

Homepage

If you want to get the latest information about EditPlus, please visit EditPlus Homepage on the web. You can also download latest version of EditPlus at the homepage.

<http://www.editplus.com>

Feedback

Please send any bug report, suggestion, question and comment to the author at following address.

support@editplus.com

Known bugs and workarounds

Please visit our home page to see known bugs and workarounds.

<http://www.editplus.com/trouble.html>

Syntax Highlighting

EditPlus supports powerful and customizable syntax highlighting for HTML, CSS, PHP, ASP, Perl, C/C++, Java, JavaScript and VBScript by default. Also, you can create your own syntax file to support other programming languages.

In order to add your own syntax type, you must create a syntax file and add it on [Settings & Syntax page](#) of the Preferences dialog box.

Syntax file is a plain text file which has ".STX" extension and should be written in predefined format. The format is very simple. The fastest way is to look into the sample .STX file such as JS.STX for JavaScript files (*.JS).

■ Header Information

```
#TITLE=C/C++
#DELIMITER=, () {} [] -+*%/=" '~!&|\<>?:;.
#QUOTATION1='
#QUOTATION2="
#CONTINUE_QUOTE=n
#LINECOMMENT=//
#LINECOMMENT2=
#COMMENTON=/*
#COMMENTOFF=*/
#COMMENTON2=
#COMMENTOFF2=
#ESCAPE=\
#CASE=y
#PREFIX1=
#PREFIX2=
#PREFIX3=
#PREFIX4=
#PREFIX5=
#SUFFIX1=
#SUFFIX2=
#SUFFIX3=
#SUFFIX4=
#SUFFIX5=
#HTML_EMBEDDED=
#SCRIPT_BEGIN=
#SCRIPT_END=
#NUMBER_PATTERN=cpp
#SPECIAL_STX=cpp
```

All statements must be prefixed with '#' sign.

#TITLE

The title of syntax file. It should be located at the first line of the file. Otherwise, EditPlus cannot load it.

#DELIMITER

Specify delimiters for parsing keywords. You don't need to specify the space character and the tab character here, since those are treated as delimiter by default.

#QUOTATION1

Specify quotation mark. Enter only one character.

`#QUOTATION2`

Specify alternate quotation mark. Enter only one character.

`#CONTINUE_QUOTE`

This option allows un-terminated quotation to be continued to next line. 'y' for yes and 'n' for no. 'n' is default value.

`#LINECOMMENT`

Specify a string which turns on line comment. If you prefix ^! to the line comment string, it works only when located at the beginning of line.

`#LINECOMMENT2`

Specify a string which turns on line comment 2. If you prefix ^! to the line comment string, it works only when located at the beginning of line.

`#COMMENTON`

Specify a string which turns on block comment.

`#COMMENTOFF`

Specify a string which turns off block comment.

`#COMMENTON2`

Specify a string which turns on block comment 2.

`#COMMENTOFF2`

Specify a string which turns off block comment 2.

`#ESCAPE`

Specify escape character. Enter only one character here.

`#CASE`

Specify case sensitivity. 'y' for yes and 'n' for no. Default value is 'n'.

`#PREFIX1 - #PREFIX5`

Specify keyword prefix character. Any word that follows the prefix will be treated as a keyword.

`#SUFFIX1 - #SUFFIX5`

Specify keyword suffix character. Any word that precedes the suffix will be treated as a keyword.

`#HTML_EMBEDDED`

Specify 'y' if it is HTML-embedded script such as PHP. See 'PHP.STX' for an example.

`#SCRIPT_BEGIN`

Specify the string which turns on HTML-embedded script. Valid only if #HTML_EMBEDDED is 'y'. See 'PHP.STX' for an example.

`#SCRIPT_END`

Specify the string which turns off HTML-embedded script. Valid only if #HTML_EMBEDDED is 'y'. See 'PHP.STX' for an example.

`#NUMBER_PATTERN`

'cpp' for C/C++ number syntax highlighting.

`#SPECIAL_STX`

'html' for HTML syntax file, 'cpp' for C/C++ syntax file, and 'perl' for Perl syntax file. Leave blank for all other syntax files.

You can also insert comment line in syntax file. Comment line must begin with semicolon(;). If you need to add a keyword which begins with semicolon, you must prefix an escape character '^' to it.

- **Keyword groups**

`#KEYWORD=`Reserved words

abstract

```
boolean  
break
```

```
#KEYWORD=Compiler directives  
...
```

Each keyword group begins with `#KEYWORD` statement with optional description of the group. Keyword list follows from the next line. If you need to include '#' sign into a keyword, you must prefix an escape character '^' to it like this: '^#'. In this case, the '#' sign should not be included in #DELIMITER statement. You can specify up to 5 keyword groups.

- **User files repository**

EditPlus web site has a collection of user files (stx, ctl, acp files) on [User Files page](#). You can submit your own syntax file to submit@editplus.com if you would like to share your file with other users.

Internet Features

EditPlus supports following Internet features:

- Seamless web browser for previewing the content of your HTML document or Java applet without leaving the editor. Browser window also has common browser commands so you can browse Internet web sites as well as local HTML files.
- FTP commands for uploading your local files to FTP server or for editing remote files directly.
- Highlights URL and e-mail addresses in normal text files and lets you activate them with a single keystroke (F8) or 'Ctrl + double-click'.

Browser feature requires IE 3 or higher installed on your system.

If you don't have IE 3 or higher on your system, EditPlus loads system default browser or user-defined browser as an external application. You can specify browser settings in Tools page of the Preferences dialog box.

See also:

[View in Browser command \(View menu\)](#)

[FTP Upload command \(File menu\)](#)

[Open Remote command \(File menu\)](#)

[Save As Remote command \(File menu\)](#)

User Tools

EditPlus supports user-defined tools, help files and keystroke recording files.

You can customize tool items on [User Tools page](#) of the Preferences dialog box. There are 10 user tool groups and you can add up to 20 user-defined tools in each group. User-defined tools allows programs, help files and keystroke recording files. User tools will be shown at the bottom of Tools menu. Also you can access them through User Toolbar.

The output of tool execution can be captured in the [Output Window](#), so that you can double-click the error line to automatically load the file and locate the cursor to that line.

You can also check 'Run as text filter' option. If this option is turned on, selected text or entire document will be passed to the tool through 'Standard Input'. Then the text will be replaced by the output passed from the tool through 'Standard Output'.

If you execute help file, EditPlus searches current word in the keyword list of the help file and shows the related topic.

Auto-completion

Auto-completion is a time-saving feature which changes a short abbreviation into a complete string. It supports Perl and C/C++ by default. For example, if you type "if" and press space key, it will expand to the following string.

```
if (  
{  
}
```

In order to use auto-completion feature for other file types, you should write auto-completion file and specify its path in the [Settings & Syntax page](#) of the Preferences dialog box.

Auto-completion file is a plain text file which has ".ACP" extension and should be written in predefined syntax. The syntax is very simple. The fastest way is to look into the sample .ACP file that comes with EditPlus.

■ Header Information

```
#TITLE=C/C++  
#CASE=y
```

Each statement should be prefixed with '#' sign.

1. #TITLE - The title of auto-completion file.
2. #CASE - Specify case sensitivity. 'y' for yes and 'n' for no. Default value is 'n'.

You can also insert comment line in the auto-completion file. Comment line begins with semicolon(;). If you need to specify a text clip which begins with semicolon, you should prefix an escape character '^' to it.

■ Text clips

```
#T=if  
if (^!)  
{  
}
```

The format of the text clip is same as that of [Cliptext library](#). Each text clip begins with title in the form of "#T=title". Title is the abbreviation that you want to expand. Text body comes next. You can define optional Hot Spot using "^!". "^" is used as escape character. If you want to insert "^" itself in the text body, you should enter the character twice like this: "^^". When you insert the "#" in the text body, you also have to prefix an escape character to it like this: "^#". The text body can have multiple lines. An optional '#' sign can be placed in the line after the last line to indicates the end of the text clip. Please note that delimiters are not allowed in the title (#T=).

```
#T=if  
if (^!)  
{  
}  
#
```

- **User files repository**

EditPlus web site has a collection of user files (stx, ctl, acp files) on [User Files page](#). You can submit your own syntax file to [<submit@editplus.com>](mailto:submit@editplus.com) if you would like to share your file with other users.

Document Template

Document template offers a quick start when you create a new document.

EditPlus offers simple document templates for HTML, C/C++, Perl and Java. You can customize it as you need on [Templates page](#) of the Preferences dialog box. Document template is a plain text file. You can define optional Hot Spot using "**^!**". Hot Spot will be the cursor location when the template is inserted into the document.

You can add up to 20 user-defined document template files. Document templates will be displayed on File | New menu.

Other Features

Column selection

You can select text by column using Alt + mouse drag. This feature is not available in word-wrap mode.

Multiple settings

You can add or remove file types and specify different options for each file types. For example, you can set word-wrap feature off in a plain text file and turn it on automatically when you load an HTML document. You can specify multiple settings in [Settings & Syntax page](#) of the Preferences dialog box.

Edit large files

Unlike Windows' built-in Notepad, it can handle large text files. The file size is only limited by the amount of free system memory.

Powerful undo/redo

EditPlus allows multiple undo/redo, so you can safely cancel any typing error.

Word wrap

Word-wrap feature helps to edit long lines more conveniently. You can turn on/off word-wrap feature through [Word Wrap command](#) on Document menu.

Line number

Line numbers can improve readability of HTML documents and program source codes. You can show or hide line number through [Line Number command](#) on View menu.

Ruler

Ruler improves readability and helps you find the cursor location quickly. You can show or hide ruler through [Ruler command](#) of View menu.

'Drag and drop' editing

EditPlus supports OLE 'drag and drop' editing which is more efficient than clipboard commands. You can also drag and drop text between [Cliptext window](#) and the document.

Powerful search and replace

EditPlus supports powerful search and replace command which can handle [Regular Expressions](#). EditPlus also supports [Find in Files](#) command so you can search text in multiple files. You can also set markers at a specific line and go to the marker quickly from any part of the document. See [Search menu commands](#) for more details.

Spell checker

EditPlus supports spell checker so you can correct typing errors in your document easily. Currently, only English dictionary is supported.

Splitter window

EditPlus allows user to divide the document window into several panes and edit different part of the file concurrently. To divide current document, run [Split command](#) on Window menu.

Keystroke recording

You can record keystrokes and playback it later. Use [Record Keystrokes command](#) on Tools menu.

Customizable hotkeys

You can customize hotkeys of all commands of EditPlus. See [Keyboard page](#) of the Preferences dialog box.

Monitor clipboard

This option can speed up repeated cut-and-paste operations. Any text that is copied or cut to clipboard will automatically be appended to current document. See [Monitor Clipboard command](#).

Column Marker

Column marker is a vertical line which indicates specific column location. Column marker can be useful for column-oriented programming languages such as COBOL or FORTRAN. See [Column Marker command](#).

Title Bar

The title bar is located along the top of a window. It contains the name of the application and document.

To move the window, drag the title bar. Note: You can also move dialog boxes by dragging their title bars.

A title bar may contain the following elements:

- Application Control-menu button
- Document Control-menu button
- Maximize button
- Minimize button
- Close button
- Name of the application
- Name of the document
- Restore button

Scroll bars

Displayed at the right and bottom edges of the document window. The scroll boxes inside the scroll bars indicate your vertical and horizontal location in the document. You can use the mouse to scroll to other parts of the document.

Size command (System menu)

Use this command to display a four-headed arrow so you can size the active window with the arrow keys.

After the pointer changes to the four-headed arrow:

1. Press one of the DIRECTION keys (left, right, up, or down arrow key) to move the pointer to the border you want to move.
2. Press a DIRECTION key to move the border.
3. Press ENTER when the window is the size you want.

Note: This command is unavailable if you maximize the window.

Shortcuts

Mouse: Drag the size bars at the corners or edges of the window.

Move command (Control menu)

Use this command to display a four-headed arrow so you can move the active window or dialog box with the arrow keys.

Note: This command is unavailable if you maximize the window.

Shortcuts

Mouse: Drag the title bar

Minimize command (application Control menu)

Use this command to reduce the EditPlus window to an icon.

Shortcuts

Mouse: Click the minimize icon on the title bar.

Maximize command (System menu)

Use this command to enlarge the active window to fill the available space.

Shortcuts

Mouse: Click the maximize icon on the title bar; or double-click the title bar.

Next Window command (document Control menu)

Use this command to switch to the next open document window. EditPlus determines which window is next according to the order in which you opened the window.

Shortcuts

Keys: Ctrl+F6

Previous Window command (document Control menu)

Use this command to switch to the previous open document window. EditPlus determines which window is previous according to the order in which you opened the windows.

Shortcuts

Keys: Shift+Ctrl+F6

Close command (Control menus)

Use this command to close the active window or dialog box.

Clicking the close icon on the title bar is the same as choosing the Close command.

Shortcuts

Keys: Ctrl+F4 closes a document window
 Alt+F4 closes the EditPlus window or dialog box

Restore command (Control menu)

Use this command to return the active window to its size and position before you chose the Maximize or Minimize command.

No Help Available

No help is available for this area of the window.

No Help Available

No help is available for this message box.

File menu commands

The File menu offers the following commands:

<u>New</u>	Creates a new document.
<u>New Normal Text</u>	Creates a new normal document.
<u>New HTML</u>	Creates a new HTML document.
<u>New Browser</u>	Creates a new Browser window.
<u>Configure Templates</u>	Adds or removes document templates.
<u>Document Template</u>	Creates a new document using document template.
<u>Open</u>	Opens an existing document.
<u>Close</u>	Closes an opened document.
<u>Close All</u>	Closes all document windows.
<u>Lock Files</u>	Protects open files from modified by other applications.
<u>Save</u>	Saves an opened document using the same filename.
<u>Save All</u>	Saves all documents.
<u>Save As</u>	Saves an opened document to a specified file name.
<u>Print</u>	Prints a document.
<u>Print Direct</u>	Prints the active document directly.
<u>Print Preview</u>	Displays the document on the screen as it would appear printed.
<u>Print Setup</u>	Selects a printer and printer connection.
<u>Print All</u>	Prints all open documents.
<u>FTP Upload</u>	Uploads file to FTP server.

d

Upload Multiple Uploads multiple files to FTP server.

Upload All

Uploads all open files to FTP server.

Open Remote Opens an existing document from FTP server.

Save As Remote Saves the active document as a remote FTP file.

e

FTP Settings Sets the FTP account information.

Disconnect Closes all FTP connections.

Send Sends the document through electronic mail.

Open Header File Opens the header file of the C/C++ file.

Delete Deletes the active document file.

Recent Files Opens last documents you closed.

Properties Displays the file's properties.

Save & Exit Saves all documents and quits the application.

Exit Exits EditPlus.

New command (File menu)

Use this command to create a new document on EditPlus. Choose appropriate document type on the popup menu. You can modify the list of templates through [Configure Templates](#) command.

Shortcuts

Toolbar:



New Normal Text command (File menu)

Use this command to create a new normal document in EditPlus.

You can open an existing document with the Open command.

Shortcuts


Keys: Ctrl+N

New HTML command (File menu)

Use this command to create a new HTML document in EditPlus.

You can open an existing HTML document with the Open command.

Shortcuts

Toolbar: 
Keys: Ctrl+Shift+N

New Browser command (File menu)

Use this command to create a new browser window in EditPlus.

If you choose seamless browser window option in [Tools page](#) of the Preferences dialog box, new seamless browser window will be created. Otherwise, EditPlus launches a new external browser.

Shortcuts

Keys: Ctrl+Shift+B

Configure Templates command (File menu)

Use this command to add/remove/modify the document templates. Document template is used for quick start of new document. See [Document Template](#) for more information. This command presents [Templates page](#) of the Preferences dialog box.

Document Template command (File menu)

Use this command to create a new document using document template. You can add/or remove these menu items in Templates page of the Preferences dialog box.


Open command (File menu)

Use this command to open an existing document in a new window.

EditPlus displays the File Open dialog box so you can choose documents to edit. You can open multiple documents at once. Use the Window menu or Document Selector to switch among the multiple open documents. See [Window 1, 2, ... command](#) and [Document Selector](#).

You can create new documents with the [New command](#).

Shortcuts

Toolbar: 
Keys: Ctrl+O

Close command (File menu)

Use this command to close all windows containing the active document.

EditPlus suggests that you save changes to your document before you close it. If you close a document without saving, you lose all changes made since the last time you saved it. Before closing an untitled document, EditPlus displays the Save As dialog box and suggests that you name and save the document.

You can also close a document by using the Close icon on the document's window.

Lock Files command (File menu)

Use this command to protect open files from modified by other applications.


NOTE: This command does not work on remote files.

Save command (File menu)

Use this command to save the active document to its current name and directory.

When you save a document for the first time, EditPlus displays the Save As dialog box so you can name your document. If you want to change the name and directory of an existing document before you save it, choose the Save As command.

Shortcuts

Toolbar: 
Keys: Ctrl+S

Save All command (File menu)

Use this command to save all open documents to their current name and directory.

This command does not display the Save As dialog box for unnamed documents.

Shortcuts

Toolbar:



Save As command (File menu)

Use this command to save and name the active document. EditPlus displays the Save As dialog box so you can name your document.

To save a document with its existing name and directory, use the Save command.

Print command (File menu)

Use this command to print a document. This command presents a Print dialog box, where you may specify the range of pages to be printed, the number of copies, the destination printer, and other printer setup options.

Shortcuts

Toolbar:
Keys: Ctrl+P



Print Direct command (File menu)

Use this command to print a document directly. Unlike Print command, this command does not present Print dialog box.

Print All command (File menu)

Use this command to print all open documents. This command is useful when you want to print many documents at once without any intervention.

Print Progress Dialog

The Printing dialog box is shown during the time that EditPlus is sending output to the printer. The page number indicates the progress of the printing.

To abort printing, choose Cancel.

Print Preview command (File menu)

Use this command to display the active document as it would appear when printed. When you choose this command, the document window will be replaced with a print preview window in which one or two pages will be displayed in their printed format. The Print Preview toolbar offers you options to view either one or two pages at a time; move back and forth through the document; zoom in and out of pages; and initiate a print job.

Shortcuts

Toolbar:



Print Preview toolbar

The print preview toolbar offers you the following options:

Print

Bring up the print dialog box, to start a print job.

Next Page

Preview the next printed page.

Prev Page

Preview the previous printed page.

One Page / Two Page

Preview one or two printed pages at a time.

Zoom In

Take a closer look at the printed page.

Zoom Out

Take a larger look at the printed page.

Close

Return from print preview to the editing window.

Print Setup command (File menu)

Use this command to specify various printing options and select a printer and a printer connection. This command presents Print page of the Preferences dialog box, where you specify the settings.

FTP Upload command (File menu)

Use this command to upload file to FTP server. This command presents FTP Upload dialog box.

Shortcuts

Keys: Ctrl+Shift+S

FTP Upload dialog box

In this dialog box, you can specify file name and upload it to FTP server. You can invoke this dialog box using FTP Upload command on File | FTP menu.

File to upload

Enter full file name to upload to FTP server.

FTP account

Select FTP server where you want to upload the local file. You can edit FTP account settings by pressing 'Setting' button.

Subdirectory

Enter initial subdirectory where you want to upload the local file. If this field is empty, the file will be uploaded to a default FTP directory.

Restore last directory

Check this option to restore the last subdirectory option.

Base local directory

Enter base local directory. If the local file is on a subdirectory of the base local directory, it will be uploaded to the corresponding subdirectory of the remote directory.

Use base local directory option

Check this option to use the base local directory setting.

Transfer type

Select 'ASCII' if the file is a plain text file and select 'Binary' if it is an image or a binary file.

Close dialog box after transfer

Check this options if you want to close the dialog box after the file transfer.

Upload

Press this button to begin uploading.

Setting

Press this button to edit FTP account settings.

Upload Multiple command (File menu)

Use this command to upload multiple files to FTP server. This command presents Upload Multiple dialog box.

Upload All command (File menu)

Use this command to upload all open files to FTP server. This command presents Upload Multiple dialog box and adds all open files to the list.

Upload Multiple dialog box

In this dialog box, you can specify multiple files and upload them to FTP server. You can invoke this dialog box using Upload Multiple command on File | FTP menu.

Files to upload

List of files to upload.

FTP account

Select FTP server where you want to upload the local file. You can edit FTP account settings by pressing 'Setting' button.

Subdirectory

Enter initial subdirectory where you want to upload the local file. If this field is empty, the file will be uploaded to a default FTP directory.

Restore last directory

Check this option to restore the last subdirectory option.

Base local directory

Enter base local directory. If the local file is on a subdirectory of the base local directory, it will be uploaded to the corresponding subdirectory of the remote directory.

Use base local directory option

Check this option to use the base local directory setting.

Transfer type

Select 'ASCII' if the file is a plain text file and select 'Binary' if it is an image or a binary file.

Close dialog box after transfer

Check this options if you want to close the dialog box after the file transfer.

Upload

Press this button to begin uploading.

Add

Add files to the list. This command presents Select File dialog box.

Remove

Remove selected files from the list.

Setting

Press this button to edit FTP account settings.

FTP Settings dialog box

In this dialog box, you can set accounts to use with the FTP commands. Following options are available:

FTP accounts

This window displays list of FTP accounts. Select a account that you want to configure.

Description

Specify the description for current account.

FTP server

Specify FTP server name for current account.

Username

Specify username for logging in current account.

Password

Specify password for logging in current account.

Subdirectory

Specify initial subdirectory to connect. If this field is left blank, the default FTP directory will be used.

Add

Add a new account.

Remove

Remove selected account.

Up/Down

Moves selected account up or down.

Advanced Options

Set the advanced FTP options.

Use Win32 Internet Functions

Use wininet.dll for FTP features and do not use Winsock directly. This option requires Internet Explorer.

Check file modification when saving

Check this option to detect modification of a remove file by other application when saving it.

Disconnect automatically

Close connection after FTP operation.

FTP Accounts dialog box

In this dialog box, you can set advanced FTP options for current FTP account. Following options are available:

Server type

Select server type of the remote host. Select 'Automatic' to detect the server type automatically. This option is not available if 'Use Win32 Internet Functions' option is turned on.

Port

Specify port number for current account.

Default FTP port

Check this option to use default FTP port for current account.

Passive FTP mode

Check this option to use passive FTP semantics for current account.

Transfer type

'ASCII' transfer type automatically converts the file format (CR/LF) between different machines while 'Binary' type does not. 'ASCII' is recommended for plain text files.

Firewall settings

Sets the firewall options if current FTP connection requires a firewall. This option is not available if 'Use Win32 Internet Functions' option is turned on.

Open Remote command (File menu)

Use this command to open file from FTP server and edit it directly. This command presents Open Remote File dialog box.

If you run 'Save' command with remote file, the change will be saved directly to the file on the FTP server

Save As Remote command (File menu)

Use this command to save current document to FTP server and edit it directly. This command presents Save As Remote File dialog box.

If you run 'Save' command with remote file, the change will be saved directly to the file on the FTP server

Open/Save As Remote File dialog box

In this dialog box, you can browse FTP site and open/save file directly for remote editing. You can invoke this dialog box using Open Remote command on File | FTP menu.

FTP account

Select FTP account to browse. To edit FTP account settings, press 'Setting' button.

Connect

Press this button to connect to FTP server and browse the site.

Setting

Press this button to edit FTP account settings.

File list

This list box displays list of files on current FTP server. You can double click a file to open or save. If you double click a directory, the remote working directory will be set to that directory.

File name

This field displays selected file name. You can also manually type a file name.

File of type

Lists the types of files to display.

Converter

You can select a converter from the list. Converter is a system codepage by which a file is converted when opening and saving the file. To add more system codepages to the list, press the '...' button on the right and the Custom Converters dialog box will be displayed.

Open/Save

Press this button to open or save the selected file.

Close dialog box after transfer

Check this options if you want to close the dialog box after the file transfer.

Converters dialog box

In this dialog box, you can select a converter from the list. Converter is a system codepage by which a file is converted when opening and saving the file. To add more system codepages to the list, press the '...' button on the right and the Custom Converters dialog box will be displayed.

Custom Converters dialog box

In this dialog box, you can add or remove custom converters. You can use a custom converter from the list on the File Open dialog box or Open/Save As Remote File dialog box.

Custom converters

Displays current list of custom converters.

Add (left arrow button)

Add selected system codepage to the custom converter list.

Remove (right arrow button)

Remove selected custom converter from the list.

System codepages

Displays available system codepages.

FTP Settings command (File menu)

Use this command to set the FTP account information. This command presents [FTP Accounts dialog box](#).

Disconnect command (File menu)

Use this command to close all active FTP connections.

Send command (File menu)

Use this command to send current document through e-mail. This command requires MAPI compatible e-mail software.

Open Header File command (File menu)

This command loads the header file of the active document if it is C/C++ file.

Shortcuts

Keys: Ctrl+Shift+H

Delete File command (File menu)

Use this command to move current document file to the recycle bin and close all the windows containing the document.

Recent Files command (File menu)

Use the numbers and filenames listed on the File | Recent Files menu to open last documents you closed. Choose the number that corresponds with the document you want to open.

You can change number of files that appear on this menu. See [Files page](#) of the Preferences dialog box.

Properties command (File menu)

Use this command to displays the file's properties.

Save & Exit command (File menu)

Use this command to save all documents and end your EditPlus session.

Exit command (File menu)

Use this command to end your EditPlus session. You can also use the Close command on the application Control menu. EditPlus prompts you to save documents with unsaved changes.

Shortcuts

Toolbar: ■
Keys: Alt+F4

Edit menu commands

The Edit menu offers the following commands:

<u>Undo</u>	Reverse previous editing operation.
<u>Redo</u>	Reverse previous undo operation.
<u>Cut</u>	Deletes text from the document and moves it to the clipboard.
<u>Copy</u>	Copies text from the document to the clipboard.
<u>Paste</u>	Pastes text from the clipboard into the document.
<u>Delete</u>	Deletes the selection.
<u>Delete Word</u>	Deletes current word.
<u>Delete Line</u>	Deletes current line.
<u>Delete to End of Word</u>	Deletes to the end of current word.
<u>Delete to End of Line</u>	Deletes to the end of current line.
<u>Delete Word Back</u>	Deletes one word back.
<u>Select Word</u>	Selects current word.
<u>Select Line</u>	Selects current line.
<u>Select All</u>	Selects the entire document.
<u>Begin/End Selection</u>	Begins or ends selection.
<u>Begin/End Column</u>	Begins or ends column selection.
<u>Cut Appended</u>	Cuts the selection and appends to the clipboard.
<u>Copy Appended</u>	Copies the selection and appends to the

d clipboard.

Cut Cuts all marked lines
Marke and puts them on the
d clipboard.

Lines

Copy Copies all the marked
Marke lines and puts them on
d the clipboard.

Lines

Delete Deletes all the marked
Marke lines.

d

Lines

Paste Pastes text from the
as clipboard into the
Colum document columnarly.

n

Trans Transposes characters
pose either side of cursor.

Duplic Duplicates current line.
ate

Line

Duplic Copies a character from
ate previous line.

Char

Trim Trims trailing white
Trailin spaces.

g

Space

s

Tabs Converts tabs to spaces.
to

Space

s

Space Converts spaces to tabs.
s to

Tabs

Leadin Converts leading spaces
g to tabs.

Space

s to

Tabs

Join Joins selected lines.
Lines

Split Splits selected wrapped
Lines lines.

Refor Reformats paragraph to
mat the format column
number.

Increa Increases the
se indentation of current
Indent line or selected block.

Decre Decreases the

ase indentation of current
Indent line or selected block.
Line Inserts comment sign at
Comm the beginning of line.
ent
Line Removes comment sign
Unco at the beginning of line.
mme
n
t
Fill Fills column selection
Colum with specified string.
n
Align Aligns the current line or
Left selected text to the left
border.
Align Centers the current line
Center or selected text.
Align Aligns the current line or
Right selected text to the
format column number.
Upper Changes the selected
Case text to upper case.
Lower Changes the selected
Case text to lower case.
Invert Inverts the case of the
Case selected text.
Capita Capitalizes the selected
lize text.
Searc Replaces current word
h with the corresponding
Clipte cliptext.
xt
Insert Inserts current time.
Time
Insert Inserts current time with
Time seconds.
with
Secon
ds
Insert Inserts current date.
Date
Insert Inserts current date in
Date long format.
in
Long
Forma
t
Custo Customizes date/time
mize format.
Date/T
ime
Insert Inserts file into cursor

File position of current document.

Page Break Inserts a page break.

File Path Name Inserts full path name of current file.

Strip HTML Tags Strips HTML tags in current document or selection.

Ansi to HTML Entity Converts umlaut or accented characters to HTML entities.

HTML Entity to Ansi Converts HTML entities to umlaut or accented characters.

Byte Count Counts the number of characters in the document or selection.

Word Count Counts the number of words in the document or selection.

Allow Virtual Space This option allows the cursor position beyond the end of line.

Column n Select Starts the column selection.

Undo command (Edit menu)

Use this command to reverse the last editing action, if possible. The name of the command changes, depending on what the last action was. This command is unavailable if there is no editing action done.

Shortcuts

Toolbar:



Keys: Ctrl+Z or

Alt-BACKSPACE

Redo command (Edit menu)

Use this command to reverse the last undo action, if possible. The name of the command changes, depending on what the last undo action was. This command is unavailable if there is no undo action done.

Shortcuts

Toolbar:



Keys: Ctrl+Y

Cut command (Edit menu)

Use this command to remove currently selected text from the document and put it on the clipboard. This command is unavailable if there is no text currently selected.

Cutting text to the clipboard replaces the contents previously stored there.

Shortcuts

Toolbar:
Keys: Ctrl+X



Copy command (Edit menu)

Use this command to copy selected text onto the clipboard. This command is unavailable if there is no text currently selected.

Copying text to the clipboard replaces the contents previously stored there.

Shortcuts

Toolbar:
Keys: Ctrl+C



Paste command (Edit menu)

Use this command to insert a copy of the clipboard contents at the insertion point. This command is unavailable if the clipboard is empty.

Shortcuts

Toolbar:
Keys: Ctrl+V



Delete command (Edit menu)

Use this command to delete current selection of the active document. If there is no selection, this command deletes the character at current cursor position.

Shortcuts

Toolbar:
Keys: Del



Delete Word command (Edit menu)

Use this command to delete the word at current cursor position.

Shortcuts

Keys: Alt+Del

Delete Line command (Edit menu)

Use this command to delete the line at current cursor position.

Shortcuts

Keys: Alt+Shift+Del

Delete to End of Word command (Edit menu)

Use this command to delete to the end of current word.

Shortcuts

Keys: Ctrl+Del

Delete to End of Line command (Edit menu)

Use this command to delete to the end of current line.

Shortcuts

Keys: Ctrl+Shift+Del

Delete Word Back command (Edit menu)

Use this command to delete one word back.

Shortcuts

Keys: Ctrl+Backspace

Select Word command (Edit menu)

Use this command to select the word at current cursor position.

Shortcuts

Keys: Ctrl+W

Select Line command (Edit menu)

Use this command to select the line at current cursor position.

Shortcuts

Keys: Ctrl+R

Select All command (Edit menu)

Use this command to select the entire document.

Shortcuts

Keys: Ctrl+A

Begin/End Selection (Edit menu)

Use this command to begin or end selection. This command is useful when selection area is spread over a large file.

Shortcuts

Keys: Alt+Shift+B

Begin/End Column (Edit menu)

Use this command to begin or end column selection. This command is useful when selection area is spread over a large file.

Shortcuts

Keys: Alt+Shift+E

Cut Append command (Edit menu)

Use this command to cut and append selected text onto the clipboard. This command is unavailable if there is no data currently selected.

Shortcuts

Keys: Ctrl+Shift+C

Copy Append command (Edit menu)

Use this command to copy and append selected text onto the clipboard. This command is unavailable if there is no data currently selected.

Shortcuts

Keys: Ctrl+Shift+X

Cut Marked Lines command (Edit menu)

Use this command to cut all marked lines and put them on the clipboard. This command is unavailable if there is no marked line.

Copy Marked Lines command (Edit menu)

Use this command to copy all the marked lines and put them on the clipboard. This command is unavailable if there is no marked line.

Delete Marked Lines command (Edit menu)

Use this command to delete all the marked lines. This command is unavailable if there is no marked line.

Paste as Column command (Edit menu)

Use this command to Paste text from the clipboard into the document columnarly. This command has saame result as you copy and paste column selection.

NOTE: You cannot use this command if word wrap option is turned on.

Transpose command (Edit menu)

Use this command to transpose characters either side of the cursor.

Shortcuts

Keys: Ctrl+T

Duplicate Line command (Edit menu)

Use this command to duplicate current line.

Shortcuts

Keys: Ctrl+J

Duplicate Char command (Edit menu)

Use this command to copy a character from previous line. It copies from the same column number as current cursor location.

Shortcuts

Keys: Ctrl+-

Trim Trailing Spaces command (Edit menu)

Use this command to remove trailing spaces of each line.

Tabs to Spaces command (Edit menu)

Use this command to convert tabs to spaces in selected text or entire document.

Spaces to Tabs command (Edit menu)

Use this command to convert spaces to tabs in selected text or entire document.

Leading Places to Tabs command (Edit menu)

Use this command to convert leading spaces to tabs in selected text or entire document. This command converts spaces only at the beginning of line.

Join Lines command (Edit menu)

Use this command to join selected lines into one long line. If there is no selected text, this command joins current and next line.

Shortcuts

Keys: Ctrl+Shift+J

Split Lines command (Edit menu)

Use this command to split selected wrapped lines. If there is no selected text, this command splits current wrapped line.

This command is available only when current document is in word-wrap mode.

Shortcuts

Keys: Ctrl+Shift+K

Reformat command (Edit menu)

Use this command to join all lines in the paragraph and reformat the text to the format column number, or to the window border if word wrap mode is turned on. You can specify format column number through Tab/Indent command on Document menu. The default value is 80.

Shortcuts

Keys: Ctrl+Shift+R

Increase Indent command (Edit menu)

Use this command to increase the indentation of the selected text. If there is no selected text, this command increases the indentation of the current line.

Shortcuts

Keys: Ctrl+I

Decrease Indent command (Edit menu)

Use this command to decrease the indentation of the selected text. If there is no selected text, this command decreases the indentation of current line.

Shortcuts

Keys: Ctrl+Shift+I

Line Comment command (Edit menu)

Use this command to insert line comment sign at the beginning of line.

Line Uncomment command (Edit menu)

Use this command to remove line comment sign at the beginning of line.

Fill Column command (Edit menu)

Use this command to fill column selection with a specific character or string. This command presents the Fill Column dialog box.

Fill Column dialog box

In this dialog box, you can set the options for the Fill Column command. You can invoke this dialog box using the Fill Column command on Edit | Format menu.

Enter character or string

Enter character or string with which you want to fill the column selection.

Insert

Select this option if you want to insert the specified string at the beginning of each line of the column selection.

Replace

Select this option if you want to replace the existing text in the column selection with the specified string.

Repeat

Select this option if you want to repeatedly fill the area of the column selection with the specified string.

Align Left command (Edit menu)

Use this command to align current line or selected text to the left border.

This command is not available if current document is in word-wrap mode.

Align Center command (Edit menu)

Use this command to center current line or selected text between the left edge and the format column number. You can specify format column number through Tab/Indent command on Document menu. The default value is 80.

This command is not available if current document is in word-wrap mode.

Align Right command (Edit menu)

Use this command to align the current line or selected text to the format column number. You can specify format column number through Tab/Indent command on Document menu. The default value is 80.

This command is not available if current document is in word-wrap mode.

Upper Case command (Edit menu)

Use this command to convert the selected text to upper case. If there is no selected text, this command converts the character at current cursor position.

Shortcuts

Keys: Ctrl+U

Lower Case command (Edit menu)

Use this command to convert the selected text to lower case. If there is no selected text, this command converts the character at current cursor position.

Shortcuts

Keys: Ctrl+L

Invert Case command (Edit menu)

Use this command to convert the case of selected text to opposite case. If there is no selected text, this command converts the character at current cursor position.

Shortcuts

Keys: Ctrl+K

Capitalize command (Edit menu)

Use this command to capitalizes the selected text. This command is unavailable if there is no selected text.

Shortcuts

Keys: Ctrl+Shift+U

Insert Time command (Edit menu)

Use this command to insert current time into the active document. The time format does not include seconds. If you want to include the seconds in the time format, use [Insert Time with Seconds](#) command.

Shortcuts

Keys: Ctrl+M

Insert Time with Seconds command (Edit menu)

Use this command to insert current time into the active document. The time format includes seconds. If you don't want to include the seconds in the time format, use [Insert Time](#) command.

Shortcuts

Keys: Ctrl+Shift+M

Insert Date command (Edit menu)

Use this command to insert current date in short format into the active document. If you want the long format, use [Insert Date in Long Format](#) command.

Shortcuts

Keys: Ctrl+D

Insert Date in Long Format command (Edit menu)

Use this command to insert current date in long format into the active document. If you want the short format, use [Insert Date](#) command.

Shortcuts

Keys: Ctrl+Shift+D

Customize Date/Time command (Edit menu)

Use this command to customize date/time format which is used by Date/Time commands. This command presents Customize Date/Time dialog box.

Customize Date/Time dialog box

In this dialog box, you can customize date/time format which is used by date/time commands. You can invoke this dialog box using Customize Date/Time command on Edit | Insert menu.

Commands

Choose date/time command where current date/time format should be applied.

Format

Type Date/Time Macro here or press down-arrow button to choose macro.

Use default system format

Check this option to use default system date/time format.

Preview

This field shows date/time string which will be inserted into document.

Date/Time Macros

The following macros can be used in Format field in Customize Date/Time dialog box.

Macro	Description
\$(d)	Day of month.
\$(dd)	Day of month with leading zero.
\$(ddd)	Day of week.
\$(dddd)	Day of week full name.
\$(M)	Month.
\$(MM)	Month with leading zero.
\$(MMM)	Month abbreviation.
\$(MMMM)	Month full name.
\$(y)	Year.
\$(yy)	Year with leading zero.
\$(yyyy)	Year full four digits.
\$(gg)	Period/Era.
\$(h)	Hours.
\$(hh)	Hours with leading zero.
\$(H)	Hours in 24-hour clock.
\$(HH)	Hours in 24-hour clock with leading zero.
\$(m)	Minutes.
\$(mm)	Minutes with leading zero.
\$(s)	Seconds.
\$(ss)	Seconds with leading zero.
\$(t)	Time marker short.
\$(tt)	Time marker long.

Date/Time macros are case-sensitive.

Search Cliptext command (Edit menu)

Use this command to expand current word into the corresponding cliptext item. This command searches the active cliptext library for the current word, and inserts the matching cliptext item into the active document, or presents Search Cliptext dialog box if there are more than one matching cliptext items.

Shortcuts

Keys: F2

Search Cliptext dialog box

In this dialog box, you can select a matching cliptext item and insert it into the active document. You can invoke this dialog box using Search Cliptext command.

Insert File command (Edit menu)

Use this command to insert content of a file into cursor position of current document. This command presents File Open dialog box to choose which file to insert.

Page Break command (Edit menu)

Use this command to insert a page break (ASCII 12).

File Path Name command (Edit menu)

Use this command to insert full path and name of current file.

Strip HTML Tags command (Edit menu)

Use this command to strip all HTML tags from current document or selection.

Shortcuts

Keys: Ctrl+Shift+P

Ansi to HTML Entity command (Edit menu)

Use this command to convert high-ASCII special characters and European characters such as umlauts or accents into HTML entities.

HTML Entity to Ansi command (Edit menu)

Use this command to convert HTML entities to high-ASCII special characters and European characters such as umlauts or accents.

Byte Count command (Edit menu)

Use this command to count the number of characters in the document or selection.

Word Count command (Edit menu)

Use this command to count the number of words in the document or selection.

Allow Virtual Space command (Edit menu)

Check this option to allow cursor position beyond the end of line. If you enter any character when the cursor is located beyond the end of line, appropriate number of tabs and spaces will automatically be inserted.

Column Selection command (Edit menu)

Use this command to start column selection. Move mouse or use arrow key to select and then click mouse button or press Enter.

You can also use Alt + mouse drag to start column selection.

NOTE: You cannot use this command if word wrap option is turned on.

Shortcuts

Keys: Alt+C

Mouse: Alt+drag

View menu commands

The View menu offers the following commands:

<u>T</u> <u>oolbar</u>	Shows or hides the toolbar.
<u>H</u> <u>TML</u> <u>T</u> <u>oolbar</u>	Shows or hides the HTML toolbar.
<u>B</u> <u>rows</u> <u>e</u> <u>r</u> <u>oolbar</u>	Shows or hides the Browser toolbar.
<u>S</u> <u>tatus</u> <u>B</u> <u>ar</u>	Shows or hides the status bar.
<u>C</u> <u>lipte</u> <u>x</u> <u>t</u> <u>W</u> <u>indo</u>	Shows or hides the Cliptext window.
<u>D</u> <u>irect</u> <u>o</u> <u>ry</u> <u>W</u> <u>indo</u> <u>w</u>	Shows or hides the Directory Window.
<u>O</u> <u>utput</u> <u>W</u> <u>indo</u> <u>w</u>	Shows or hides the output window.
<u>D</u> <u>ocu</u> <u>m</u> <u>ent</u> <u>S</u> <u>elect</u> <u>o</u> <u>r</u>	Shows or hides the Document Selector.
<u>G</u> <u>oto</u> <u>C</u> <u>lipte</u> <u>x</u> <u>t</u> <u>D</u> <u>irect</u> <u>o</u> <u>ctory</u>	Switches the focus between the cliptext/directory window and the document.
<u>G</u> <u>oto</u> <u>O</u> <u>utput</u> <u>W</u> <u>indo</u> <u>w</u>	Switches the focus between the output window and the document.
<u>S</u> <u>cr</u> <u>e</u> <u>e</u> <u>n</u> <u>F</u> <u>ont</u>	Selects the screen font.
<u>S</u> <u>e</u> <u>t</u> <u>F</u> <u>ont</u>	Configures font settings.
<u>M</u> <u>irror</u> <u>S</u> <u>cr</u> <u>e</u> <u>e</u> <u>n</u> <u>F</u> <u>ont</u>	Uses same printer font as screen font.
<u>S</u> <u>e</u> <u>t</u> <u>P</u> <u>rinter</u> <u>F</u> <u>ont</u>	Sets the printer font.
<u>T</u> <u>abs</u> <u>a</u> <u>n</u> <u>d</u> <u>S</u> <u>pace</u> <u>s</u>	Shows or hides space and tab marks.

Line Break Shows or hides line break marks.

URL highlighting Highlights URLs and e-mail addresses.

Syntax highlighting Enables the syntax highlighting.

Cursor Indicator Shows or hides cursor indicators.

Ruler Shows or hides the ruler.

Line Number Shows or hides the line number.

Full Screen Toggles the full screen mode on and off.

n

View in Browser Loads the active document into the web browser.

Toolbar command (View menu)

Use this command to display and hide the Toolbar, which includes buttons for some of the most common commands on EditPlus, such as File Open. A check mark appears next to the menu item when the Toolbar is displayed.

See [Toolbar](#) for help on using the toolbar.

Toolbar



Toolbars (Standard and User) are displayed across the top of the application window, below the menu bar. The Toolbar allows quick mouse access to many tools used in EditPlus.

The Toolbar is dockable to any side of the main window and can be a resizable floating window too. You can move the Toolbar by dragging the gripper which is located at the left or top edge of the toolbar. The Toolbar can be allowed to show double column when docked vertically. See the [Tools page](#) of the Preferences dialog box.

You can customize Toolbars in [Toolbar page](#) of the Preferences dialog box.

Button	Operation
--------	-----------

- Opens a new document.



Opens an existing document. EditPlus displays the Open dialog box, in which you can locate and open the desired file.

- Saves the active document with its current name. If you have not named the document, EditPlus displays the Save As dialog box.



Saves all documents.

- Displays the document on the screen as it would appear printed.
- Prints the active document.



Checks spelling in the active document.

- Creates a blank HTML page.
- Removes selected data from the document and stores it on the clipboard.
- Copies the selection to the clipboard.
- Inserts the contents of the clipboard at the insertion point.



Deletes the selection.

- Reverses the last editing.
- Reverses the last undo action.



Finds the specified text.



Replaces specific text with different text.



Searches for a string in multiple files.



Go to specified line in the active document.



Toggles the word-wrap feature of the active document.



Toggles the auto-indent feature of current document.



Shows or hides the line number.



Sets the preferences. This command presents Preferences dialog box.



Shows or hides the cliptext window.



Shows or hides the Directory Window.



Shows or hides the output window.



Shows or hides the Document Selector.



Toggles Full Screen mode on and off.



Displays help for clicked on buttons, menus and windows.

- Quits the application; prompts to save documents.

HTML Toolbar command (View menu)

Use this command to display and hide the HTML Toolbar, which includes buttons for common HTML tags. The HTML Toolbar appears automatically when you open an HTML document and disappears when you close the document. A check mark appears next to the menu item when the HTML Toolbar is displayed.

See [HTML Toolbar](#) for help on using the HTML toolbar.

HTML Toolbar



The HTML Toolbar allows you to insert common HTML tags quickly and easily. It also supports useful tools such as HTML Color Picker, Character Picker, Table Generator and Object Picker.

The HTML Toolbar is displayed across the top of the document window. The HTML Toolbar appears automatically when you open an HTML document and disappears when you close the document.

The HTML Toolbar is fixed and cannot be moved on other side of the window. However it can be allowed to be wrapped when there is not enough space to show all the buttons. See the [Tools page](#) of the Preferences dialog box

To hide or display the HTML Toolbar, choose HTML Toolbar from the View menu.

You can customize HTML Toolbar in [Toolbar page](#) of the Preferences dialog box.

Button	Operation
--------	-----------



Loads the active document into the web browser.



Sets the selected text bold (toggle).



Sets the selected text italic (toggle).



Sets the selected text underlined (toggle).



Sets the font of the selected text.



Inserts a color code. This command presents the [HTML Color Picker](#).



Inserts a Non Breaking Space.



Inserts a Break tag.



Inserts a Paragraph tag.



Sets the selected text Heading.



Inserts an Image.



Inserts an Anchor.



Inserts a Horizontal Ruler.



Inserts a Comment.



Inserts a special character. This command presents the Character Picker.



Inserts a Table. This command presents the Table Generator.



Centers the selected text (toggle).



Sets the selected text Block Quotation (toggle).



Sets the selected text Preformatted (toggle).



Inserts a List.



Inserts a Script.



Inserts an Applet.



Inserts an Object. This command presents Object Picker.



Inserts a Form.



Inserts a Form Control.



Insert an Image Map.



Insert a Frame.

Bold command (HTML Toolbar)

Inserts Bold HTML tag.

``

Shortcuts

HTML Toolbar: ▪

Italic command (HTML Toolbar)

Inserts Italic HTML tag.

```
<I></I>
```

Shortcuts

HTML Toolbar: ■

Underline command (HTML Toolbar)

Inserts Underline HTML tag.

`<u></u>`

Shortcuts

HTML Toolbar:

Font command (HTML Toolbar)

Inserts Font HTML tag.

```
<FONT SIZE=""></FONT>
```

Shortcuts

HTML Toolbar: ■

HTML Color Picker (HTML Toolbar)

The HTML Color Picker helps you to insert HTML color code into the HTML document very easily. It shows Netscape's 216 colors which you can choose with a mouse click. If you want to insert other color, click More button and Choose Color dialog box will be shown.

Shortcuts


HTML Toolbar: ■

Non Breaking Space command (HTML Toolbar)

Inserts Non Breaking Space HTML tag.

` `

Shortcuts

HTML Toolbar: 

Break command (HTML Toolbar)

Inserts Break HTML tag.

Shortcuts

HTML Toolbar: ■

Paragraph command (HTML Toolbar)

Inserts Paragraph HTML tag.

<P>

Shortcuts

HTML Toolbar: ■

Heading command (HTML Toolbar)

This command presents Heading popup menu. Heading 1 - 6 tags are available on Heading popup menu.

Shortcuts

HTML Toolbar: ■

Heading 1 command (HTML Toolbar)

Inserts Heading 1 HTML tag.

```
<H1></H1>
```

Heading 2 command (HTML Toolbar)

Inserts Heading 2 HTML tag.

```
<H2></H2>
```

Heading 3 command (HTML Toolbar)

Inserts Heading 3 HTML tag.

```
<H3></H3>
```

Heading 4 command (HTML Toolbar)

Inserts Heading 4 HTML tag.

```
<H4></H4>
```


Heading 5 command (HTML Toolbar)

Inserts Heading 5 HTML tag.

```
<H5></H5>
```

Heading 6 command (HTML Toolbar)

Inserts Heading 6 HTML tag.

<H6></H6>

Image command (HTML Toolbar)

Inserts Image HTML tag. This command presents Select File dialog box to select image file. If you want to insert the image tag directly without the dialog box, hold down Shift key when running this command.

```
<IMG SRC="" ALT="">
```

Shortcuts

HTML Toolbar: ▪

Anchor command (HTML Toolbar)

Inserts Anchor HTML tag.

```
<A HREF=""></A>
```

Shortcuts

HTML Toolbar: ■

Horizontal Ruler command (HTML Toolbar)

Inserts Horizontal Ruler HTML tag.

<HR>

Shortcuts

HTML Toolbar: ■

Comment command (HTML Toolbar)

Inserts Comment HTML tag.

```
<!-- -->
```

Shortcuts

HTML Toolbar:

Character Picker (HTML Toolbar)

The Character Picker helps you to insert HTML special characters into HTML document very easily. If you click on a character, the corresponding character code will be inserted into the active document.

Shortcuts

HTML Toolbar: ▪

Table Generator (HTML Toolbar)

The Table Generator helps you to insert table tag into the HTML document very easily. Press left mouse button on a table cell and drag to the desired size then release the mouse button.

Shortcuts

HTML Toolbar: ■

Center command (HTML Toolbar)

Inserts Center HTML tag.

```
<CENTER></CENTER>
```

Shortcuts

HTML Toolbar: ■

Block Quotation command (HTML Toolbar)

Inserts Block Quotation HTML tag.

```
<BLOCKQUOTE></BLOCKQUOTE>
```

Shortcuts

HTML Toolbar: ▪

Preformat command (HTML Toolbar)

Inserts Preformat HTML tag.

```
<PRE></PRE>
```

Shortcuts

HTML Toolbar: ▪

List command (HTML Toolbar)

This command presents List tag popup menu. Unordered list, Ordered list and Definition list are available on List tag popup menu.

Shortcuts

HTML Toolbar: ▪

Unordered List command (HTML Toolbar)

Inserts Unordered List HTML tag.

```
<UL>  
  <LI>  
  <LI>  
</UL>
```

Ordered List command (HTML Toolbar)

Inserts Ordered List HTML tag.

```
<OL>  
  <LI>  
  <LI>  
</OL>
```

Definition List command (HTML Toolbar)

Inserts Definition List HTML tag.

```
<DL>  
  <DT>  
  <DD>  
</DL>
```

Script command (HTML Toolbar)

Inserts Script HTML tag.

```
<SCRIPT LANGUAGE="JavaScript">  
<!--  
  
//-->  
</SCRIPT>
```

Shortcuts

HTML Toolbar:



Applet command (HTML Toolbar)

Inserts Applet HTML tag.

```
<APPLET CODE="" WIDTH="" HEIGHT="">  
</APPLET>
```

Shortcuts

HTML Toolbar:



Object Picker (HTML Toolbar)

The Object Picker helps you to insert object tag into the HTML document very easily. It lists all the ActiveX object which is available on the system. Double-click the item which you want to insert into the document.

Shortcuts

HTML Toolbar:



Form command (HTML Toolbar)

Inserts Form HTML tag.

```
<FORM METHOD=POST ACTION="">
```

```
</FORM>
```

Shortcuts

HTML Toolbar:



Form Control command (HTML Toolbar)

This command presents Form Control popup menu. Text Box, List Box, Radio Button, Check Box, Text Area, Reset Button, Submit Button, Password Button, Hidden Field and Image are available on Form Control popup menu.

Shortcuts

HTML Toolbar:



Text Box command (HTML Toolbar)

Inserts Text Box HTML tag.

```
<INPUT TYPE="text" NAME="">
```

List Box command (HTML Toolbar)

Inserts List Box HTML tag.

```
<SELECT NAME=""></SELECT>
```

Radio Button command (HTML Toolbar)

Inserts Radio Button HTML tag.

```
<INPUT TYPE="radio" NAME="">
```

Check Box command (HTML Toolbar)

Inserts Check Box HTML tag.

```
<INPUT TYPE="checkbox" NAME="">
```


Text Area command (HTML Toolbar)

Inserts Text Area HTML tag.

```
<TEXTAREA NAME="" ROWS="" COLS=""></TEXTAREA>
```

Reset Button command (HTML Toolbar)

Inserts Reset Button HTML tag.

```
<INPUT TYPE="reset">
```

Submit Button command (HTML Toolbar)

Inserts Submit Button HTML tag.

```
<INPUT TYPE="submit">
```

Password Box command (HTML Toolbar)

Inserts Password Box HTML tag.

```
<INPUT TYPE="password">
```

Hidden Field command (HTML Toolbar)

Inserts Hidden Field HTML tag.

```
<INPUT TYPE="hidden">
```

Form Image command (HTML Toolbar)

Inserts Form Image HTML tag.

```
<INPUT TYPE="image" SRC="">
```

Image Map command (HTML Toolbar)

Inserts Image Map HTML tag.

```
<MAP NAME="">  
  <AREA SHAPE="" HREF="" COORDS="" ALT="">  
</MAP>
```

Shortcuts

HTML Toolbar: ■

Frame command (HTML Toolbar)

Inserts Frame HTML tag.

```
<FRAMESET ROWS="," COLS=",">  
  <FRAME NAME="" SRC="" SCROLLING="">  
  <FRAME NAME="" SRC="" SCROLLING="">  
</FRAMESET>
```

Shortcuts

HTML Toolbar: ▪

Browser Toolbar command (View menu)

Use this command to display and hide the Browser Toolbar, which includes buttons for some of the most common browser commands on EditPlus. A check mark appears next to the menu item when the Browser Toolbar is displayed.

See [Browser Toolbar](#) for help on using the Browser toolbar.

Browser Toolbar



The Browser Toolbar is displayed across the top of the seamless browser window. The Browser Toolbar allows quick mouse access to Browser commands available in EditPlus.

The Browser Toolbar is fixed and cannot be docked on other side of the window.

To hide or display the Browser Toolbar, choose Browser Toolbar from the View menu.

Button	Operation
	Edits the source of current HTML page.
	Goes back one step.
	Goes forward one step.
	Stops loading current page.
	Refreshes content of current page.
	Opens the start page.
	Selects the font size.
	Searches the Internet.
	Displays the contents of your favorites folder.
	Goes to EditPlus Homepage.



Status Bar command (View menu)

Use this command to display and hide the Status Bar, which describes the action to be executed by the selected menu item or depressed toolbar button, and keyboard latch state. A check mark appears next to the menu item when the Status Bar is displayed.

See [Status Bar](#) for help on using the status bar.

Status Bar



The status bar is displayed at the bottom of the EditPlus window. To display or hide the status bar, use the Status Bar command on the View menu.

The left area of the status bar describes actions of menu items as you use the arrow keys to navigate through menus. This area similarly shows messages that describe the actions of toolbar buttons as you depress them, before releasing them. If after viewing the description of the toolbar button command you wish not to execute the command, then release the mouse button while the pointer is off the toolbar button.

The right areas of the status bar indicates the status of the active document and the editor:

Indicator	Description
In 1	Current line of the active document.
col 1	Current column of the active document.
1	Total lines of the active document.
00	Hex value of current character.
PC	Indicates current file format. PC, UNIX or MAC. 'U' is appended if Unicode converter is selected, 'U8' if UTF-8 converter is selected, and 'C' if a custom converter is selected.
REC	Indicates whether the keystroke recording is turned on or off.
INS	Indicates whether current input mode is insert mode or overwrite mode.
READ	Indicates whether the active document is read-only or not.

Cliptext Window command (View menu)

Use this command to display and hide the cliptext window. Cliptext window allows you to handle frequently-used text clips very conveniently. A check mark appears next to the menu item when the cliptext Window is displayed.

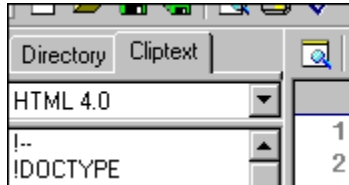
See [Cliptext Window](#) for help on using the cliptext window.

Shortcuts

Toolbar: ■
Keys: Alt+Shift+1

Cliptext Window

The cliptext window is collection of text clips for quick and easy access. Cliptext window is located at the left side of the screen. To display or hide the Cliptext window, use the [Cliptext Window command](#) on the View menu.



EditPlus offers some sample cliptext libraries such as HTML 3.2 and HTML 4.0 tag collections. You can easily edit the content of the sample libraries. And you can also create your own cliptext library.

- **Inserting cliptext item into the document**
Double-click the item in the list box, and the text will be inserted into the active document. Or drag and drop the item into the document. See [Insert command](#) for details.
- **Add cliptext item**
Click right mouse button on the list box. Then choose Add command at the popup menu. Or select the text in the document, drag and drop the selected text into the list box. This command presents [Add cliptext Item dialog box](#).
- **Remove cliptext item**
Click right mouse button on the list box. Then choose Remove command at the popup menu.
- **Edit cliptext item**
Click right mouse button on the list box. Then choose Edit command at the popup menu. This command presents [Edit cliptext Item dialog box](#).
- **Move cliptext item**
Drag and drop the cliptext item to the desired position in the list box. Items cannot be moved if the cliptext library is sorted. See [Sort Cliptext command](#).
- **Direct editing the cliptext file**
Click right mouse button on the combo box. Then choose Edit command at the popup menu. The cliptext library file (which has ".CTL" extension) will be loaded into the editor. Cliptext library file should be written in predefined syntax. See [Edit Cliptext Library](#) command for detail about the syntax of cliptext libraries.

See also:

[Edit Cliptext Library](#)

[Cliptext list box popup menu](#)

[Cliptext combo box popup menu](#)

Cliptext List Box Popup Menu

Cliptext list box popup menu offers following commands:

- Insert Inserts the selected cliptext item into the active document.
- Edit Edits the selected cliptext item. This command presents Edit Cliptext Item dialog box.
- Add Add a new cliptext item. This command presents Add Cliptext Item dialog box.
- Remove Removes the selected cliptext item.
- Sort Toggles the sort mode of current cliptext library.
- Reload Reloads current cliptext library from the file.
- Hide Hides the cliptext window.
- Left Moves cliptext/directory window to the left.
- Right Moves cliptext/directory window to the left.

Cliptext Combo Box Popup Menu

Cliptext combo box popup menu offers following commands:

<u>Refres</u> <u>h</u>	Refreshes the list of cliptext libraries.
<u>New</u>	Creates a new cliptext library. This command presents <u>New Cliptext Library dialog box</u> .
<u>Direct</u> <u>ory</u>	Specifies the directory for the cliptext libraries.
<u>Edit</u>	Loads current cliptext library into the editor.
<u>Save</u>	Saves current cliptext library to the file.
<u>Rena</u> <u>me</u>	Renames current cliptext library.
<u>Delete</u>	Deletes current cliptext library.
<u>Hide</u>	Hides the cliptext window.
<u>Left</u>	Moves cliptext/directory window to the left.
<u>Right</u>	Moves cliptext/directory window to the left.

Insert command (Cliptext List Box popup menu)

Use this command to insert current cliptext item into the active document. You can also drag and drop the cliptext item to the document to get the same result.

Cliptext can define Hot Spot (using "^!"). Hot Spot will be the cursor location when the cliptext is inserted into the document. If there is any selected text in the document, cliptext with Hot spot will be wrapped both side of the selection.

For example, if following cliptext

```
<TITLE>^!<TITLE>
```

is inserted into following selected text

```
Document Title
```

the result is

```
<TITLE>Document Title<TITLE>
```

Edit command (Cliptext List Box popup menu)

Use this command to edit current cliptext item. This command presents Edit Cliptext Item dialog box. You can define Hot Spot in the cliptext using "**^!**". Hot Spot will be the cursor location when the cliptext is inserted into the document. See Insert Cliptext Item command for details about Hot Spot.

Add command (Cliptext List Box popup menu)

Use this command to add a new cliptext item. This command presents Add Cliptext Item dialog box. You can define Hot Spot in the cliptext using "**^!**". Hot Spot will be the cursor location when the cliptext is inserted into the document. See Insert Cliptext Item command for details about Hot Spot.

Remove command (Cliptext List Box popup menu)

Use this command to remove current cliptext item.

Sort command (Ciphertext List Box popup menu)

Use this command to toggle the sort mode of current ciphertext library. A check mark appears next to the menu item when ciphertext library is in sort mode. Ciphertext items cannot be moved in sorted library.

Reload command (Cliptext List Box popup menu)

Use this command to reload current cliptext library from the file. After you edited cliptext library file directly, you should reload the library to make changes appear.

Hide command (Cliptext/Directory popup menu)

Use this command to hide the cliptext or directory window. You can show window back using Cliptext Window command or Directory Window command on View menu.

Left command (Cliptext/Directory popup menu)

Use this command to locate the cliptext/directory window to the left side of the main window.

Right command (Cliptext/Directory popup menu)

Use this command to locate the cliptext/directory window to the right side of the main window.

Refresh command (Cliptext Combo Box popup menu)

Use this command to refresh the list of Cliptext Library or the content of Directory Window.

New command (Cliptext Combo Box popup menu)

Use this command to create a new cliptext library. This command presents New Cliptext Library dialog box. This command creates new empty cliptext library file on the hard disk and refreshes the cliptext library list in the combo box. You can add cliptext item in this library using Add command.

Directory command (Cliptext Combo Box popup menu)

Use this command to specify the directory for the cliptext libraries. The default value is the EditPlus directory.

Edit command (Cliptext Combo Box popup menu)

Use this command to load the current cliptext library file (which has ".CTL" extension) into the editor and edit it directly. The cliptext library file should be written in predefined syntax. The syntax is very simple. The fastest way is to look into the sample cliptext library that comes with EditPlus.

■ Header Information

```
#TITLE=HTML 3.2
#INFO
EditPlus Cliptext Library v1.0
Written by ES-Computing.
#SORT=y
```

Each statement should be prefixed with '#' sign.

1. #TITLE - The title of cliptext library. This should be located at the first line of the file. Otherwise, EditPlus cannot load it.
2. #INFO - Information about the cliptext library such as author, date, etc. This information can have multiple lines.
3. #SORT - Whether the cliptext library should be sorted or not in the list box. 'y' for yes and 'n' for no.

■ Text clips

```
#T=BODY
<BODY>
^!
</BODY>
```

Each text clips begins with title information of the form "#T=title", followed by text body. You can define optional Hot Spot using "^!". "^" is used as escape character. If you want to insert "^" itself in the text body, you should enter the character twice like "^^". When you insert the "#" in the text body, You also have to prefix the escape character to it like "^#". The text body can have multiple lines. An optional '#' can be placed in the line after the last line to indicates the end of the text clip.

```
#T=BODY
<BODY>
^!
</BODY>
#
```

The title-only text clips are also supported. The title itself will be inserted into the document. For example,

```
#T=font-family:
```

The above item has only title and not text body, so "font-family:" will be inserted into the document.

■ User files repository

EditPlus web site has a collection of user files (stx, ctl, acp files) on [User Files page](#). You can submit your own syntax file to submit@editplus.com if you would like to share your file with other users.

Save command (Cliptext Combo Box popup menu)

Use this command to save current cliptext library to the file.

Rename command (Cliptext Combo Box popup menu)

Use this command to rename the title of current cliptext library.

Delete command (Cliptext Combo Box popup menu)

Use this command to move the current cliptext library file to the Recycle bin. After deleting the file, the list of cliptext library in the combo box will be refreshed.

Edit/Add Cliptext Item dialog box

In this dialog box, you can edit the title and the text body of current cliptext item. This dialog box is also used when you add new cliptext item.

Title

Enter the title of the cliptext item.

Text body

Enter the text body of the cliptext item. "^" is regarded as escape character which is used to define Hot Spot. If you want to enter "^" itself, you should enter it twice like "^". You can define Hot Spot using "!". Hot Spot will be the cursor location when the cliptext is inserted into the document. See [Insert command](#) for more details.

New Cliptext Library dialog box

In this dialog box, you can create new cliptext library file.

File name

Enter the file name of the cliptext library. EditPlus automatically appends ".CTL" extension to the file, so do not include the extension manually.

Title

Enter the title of the cliptext library. This title will appear in the combo box of the cliptext window.

Sort

Specify whether the cliptext library should be sorted or not. If you check this option, the list of cliptext items will be shown sorted in the list box of the cliptext window.

Directory Window command (View menu)

Use this command to show or hide the directory window.

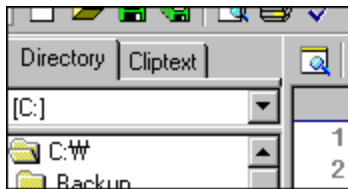
See [Directory Window](#) for more help on Directory Window.

Shortcuts

Toolbar: ■
Keys: Alt+Shift+3

Directory Window

Directory window displays files on the currently available disk drives.



Select a file and double click it to open the file. To open multiple files at once, use Shift or Ctrl key to select multiple files and press right mouse button and choose 'Open' command. To display or hide the directory window, use the Directory Window command on the View menu.

See also:

[Directory window popup menu](#)

Directory Window Popup Menu

Directory Window popup menu offers following commands:

<u>Open</u>	Opens the selected files.
<u>Open</u> <u>As</u>	Opens the selected files using a converter.
<u>Shell</u> <u>Open</u>	Runs the selected files or opens them with the system default program.
<u>Uploa</u> <u>d</u>	Uploads the selected files.
<u>Insert</u> <u>Image</u>	Inserts the image HTML tag.
<u>Refres</u> <u>h</u>	Refreshes the content of the directory window.
<u>File</u> <u>Direct</u> <u>ory</u>	Matches the directory of the active document.
<u>Chang</u> <u>e</u> <u>Direct</u> <u>ory</u>	Changes current directory of the Directory Window.
<u>Recen</u> <u>t</u> <u>Direct</u> <u>ories</u>	Goes to last directory you worked in.
<u>Rena</u> <u>me</u>	Changes the name of selected file.
<u>Delete</u>	Deletes selected files.
<u>Hide</u>	Hides the cliptext/directory window.
<u>Left</u>	Moves cliptext/directory window to the left.
<u>Right</u>	Moves cliptext/directory window to the left.

Open command (Directory Window popup menu)

Use this command to open one or more files that are selected on the Directory Window. You can select multiple files by holding down Shift or Ctrl key.

Open As command (Directory Window popup menu)

Use this command to open one or more files that are selected on the Directory Window using a converter. This command presents Converters dialog box.

Shell Open command (Directory Window popup menu)

Use this command to open one or more files with system default program. If the file is executable, it runs the file.

Upload command (Directory Window popup menu)

Use this command to upload one or more files that are selected on the Directory Window. This command presents Upload Multiple dialog box.

Insert Image command (Directory Window popup menu)

Use this command to insert the image HTML tag with the selected image file name into the active document. This command is not available if the selected file is not an image file (*.gif, *.jpg or *.png).

File Directory (Directory Window popup menu)

Use this command to display the directory content of the active document on the Directory Window.

Change Directory command (Directory Window popup menu)

Use this command to change current directory of the Directory Window.

Recent Directory command (Directory Window popup menu)

Use the numbers and directory names listed on the Recent Directories menu to go to last directory you worked in. Choose the number that corresponds with the directory you want to go.

You can change number of directories that appear on this menu. Use 'Number of recent file list' option on the [Files page](#) of the Preferences dialog box.

Rename command (Directory Window popup menu)

Use this command to change the name of selected file.

Delete command (Directory Window popup menu)

Use this command to delete selected files.

Output Window command (View menu)

Use this command to display and hide the Output window, which displays the output of user tools.

See [Output Window](#) for more help on Output window.

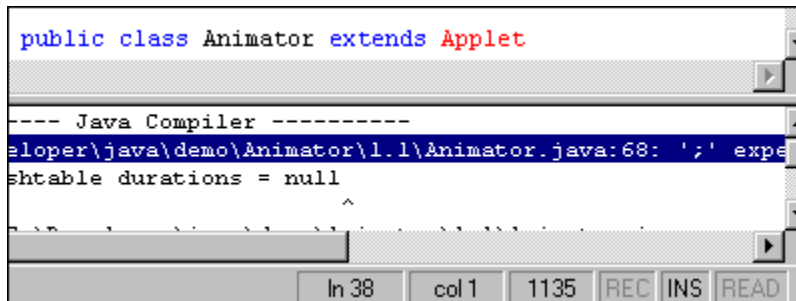
Shortcuts

Toolbar: ■
Keys: Alt+Shift+2

Output Window

The output window is located at the bottom of the screen and displays the captured output of user tools. To display or hide the output window, use the [Output Window command](#) on the View menu.

If you add a Java compiler to the [User Tools page](#) of the Preferences dialog box and check the "capture output" option, the Java compiler errors will be displayed in the output window. If you double-click on the specific error line, EditPlus automatically loads the related file and locates the cursor to that line.



To change the default output pattern for the tag jump, press 'Output Pattern' button on [User Tools page](#) of the Preferences dialog box.

The output window is also used in [Find in Files](#) command. The find result will be displayed in the output window, so you can double-click the specific line to load the file and locate the cursor to that line.

See also:

[Output window popup menu](#)

Output window Popup Menu

Output window popup menu has following commands:

<u>Open All</u>	Opens all the files which are displayed in the Output Window.
<u>Open Next</u>	Opens next matching file.
<u>Open Prev</u>	Opens previous matching file.
<u>Clear</u>	Clears the content of the output window.
<u>Stop</u>	Breaks the operation of current tool.
<u>Copy Line</u>	Copies current line to clipboard.
<u>Copy All</u>	Copies all output content to clipboard.
<u>Tab Size</u>	Sets the tab size of the Output Window.
<u>Load Result</u>	Loads a file into output window.
<u>Save Result</u>	Saves output content into a file.
<u>Hide</u>	Hides the output window.

Open All command (Output window popup menu)

Use this command to open all the files which are displayed on the Output Window.

Open Next command (Output window popup menu)

Use this command to open next matching file which is displayed on the Output Window.

Shortcuts

Keys: Ctrl+F5

Open Prev command (Output window popup menu)

Use this command to open previous matching file which is displayed on the Output Window.

Shortcuts

Keys: Ctrl+Shift+F5

Clear Output Window command

Use this command to clear the contents of the output window. Output window displays output of user tools or result of Find in Files command.

Stop Tool Operation command

Use this command to stop the tool which is currently running. This command is only applicable to console mode applications.

Shortcuts

Keys: Ctrl+Break

Copy Line command (Output window popup menu)

Use this command to copy current line of output window to clipboard.

Copy All command (Output window popup menu)

Use this command to copy all content of output window to clipboard.

Tab Size command (Output window popup menu)

Use this command to set the tab size of the Output Window.

Load Result command (Output window popup menu)

Use this command to load a file into output window. This command presents File Open dialog box.

Save Result command (Output window popup menu)

Use this command to save content of output window into a file. This command presents Save As dialog box.

Hide command (Output window popup menu)

Use this command to hide the output window. To show back the hidden window, use Output Window command on View menu.

Document Selector command (View menu)

Use this command to display and hide the Document Selector, which offers quick access to all open documents. Switching between documents is much easier with clicking document selector than pressing Ctrl+Tab key multiple times. A check mark appears next to the menu item when the Document selector is displayed.

To change the location of the Document Selector, right click the Document Selector and choose 'Options' command on the popup menu.

See [Document Selector](#) for help on using the Document Selector.

Shortcuts

Toolbar: ■
Keys: Alt+Shift+3

Document Selector



The Document Selector is displayed across the bottom of the document window. The Document Selector offers quick mouse access to all document windows currently loaded. Much faster than selecting on Window menu or pressing Ctrl+Tab key multiple times.

To hide or display the Document Selector, choose Document Selector from the View menu.

To change the location of the Document Selector, right click the Document Selector and choose 'Location' command on the popup menu.

The Folder icon is for Project menu. Using project menu, you can organize frequently-used documents into categories and load them by a single mouse click. See Project Menu for more detail about Project management feature.

Document Selector Options command (View menu)

Use this command to set the options for the Document Selector. This command presents Document Selector Options dialog box.

Document Selector Options dialog box

In this dialog box, you can set the options for the Document Selector. Following options are available.

Location

Choose a desired location of the Document Selector.

Number of rows

Specify the number of rows of the document buttons.

Button size

Specify the minimum and maximum width of the document button in number of characters. You can enter from 5 to 50.

Default Size

Reset the button size back to default values.

Close document with middle mouse button

If you check this option, you can press the middle mouse button (or wheel mouse button) on the Document Selector to close the document.

Goto Cliptext/Directory command (View menu)

Use this command when you want to move the keyboard input focus to the cliptext window/directory window, or to the document window from the cliptext/directory window.

Shortcuts

Keys: F5

Goto Output Window command (View menu)

Use this command when you want to move the keyboard input focus to the output window, or to the document window from the output window.

Shortcuts

Keys: Shift+F5

Screen Font command (View menu)

Use this command when you want to select the screen font. Choose appropriate font on the popup menu. If you want to change current font setting, use Set Font command.

Shortcuts

Toolbar:



Set Font command (View menu)

Use this command if you want to set the font of document. This command presents Font page of the Preferences dialog box.

Mirror Screen Font command (View menu)

Use this command when you want to use same printer font as screen font. If you change screen font, printer font will also be changed automatically.

Set Printer Font command (View menu)

Use this command when you want to set the printer font. This command presents Font page of the Preferences dialog box.

Tabs and Spaces command (View menu)

Use this command if you want to show or hides invisible spaces and tab characters. This option is useful when you turn on Allow Virtual Space option. If you want to show line break marks, use Line Breaks command.

Shortcuts

Keys: Alt+Shift+I

Line Break command (View menu)

Use this command if you want to show or hides invisible line break (paragraph) marks. If you want to show spaces and tab characters, use Tabs and Spaces command.

Shortcuts

Keys: Alt+Shift+L

URL highlighting command (View menu)

Use this command if you want to highlight Internet URLs and e-mail addresses. This command is not available in syntax highlighted document. You can go to the highlighted URL using Go to URL command.

Shortcuts

Keys: Alt+Shift+U

Syntax highlighting command (View menu)

Use this command if you want to enable the syntax highlighting feature. You can set the syntax highlighting options on [Settings & syntax](#) page of the Preferences dialog box.

Shortcuts

Keys: Alt+Shift+S

See also:

[**Syntax Highlighting**](#)

Cursor Indicator command (View menu)

Use this command if you want to show or hide the cursor indicator in the ruler and line number area. This command is useful for high resolution video mode. The cursor location is much easier to find. You can change the color of the indicator on [Colors page](#) of the Preferences dialog box.

Shortcuts

Keys: Alt+Shift+C

Ruler command (View menu)

Use this command if you want to show or hide the ruler at the top of the active document.


Shortcuts

Keys: Alt+Shift+R

Line Number command (View menu)

Use this command to show or hide the line number. Line number can increase readability in program sources or HTML documents.

Shortcuts

Toolbar: 
Keys: Ctrl+Shift+L

Full Screen command (View menu)

Use this command if you want to change full screen mode on and off. In full screen mode, the document window covers the entire screen so you have more space to view the content of the document.

Shortcuts

Toolbar: ■
Keys: Alt+Shift+0

View in Browser command (View menu)

Use this command if you want to view current document in browser window. If you check the seamless browser option in Tools setting, the document will be shown in the seamless browser window. Otherwise the document will be shown on external browser. You can use temporary file instead of saving current document. See [Tools page](#) of the Preferences dialog box for details.

Shortcuts

HTML Toolbar: ■
Keys: Ctrl+B

Search menu commands

The Search menu offers the following commands:

<u>F</u> <u>i</u> <u>n</u> <u>d</u>	Finds the specified text.
<u>F</u> <u>i</u> <u>n</u> <u>d</u> <u>N</u> <u>e</u> <u>x</u> <u>t</u>	Finds the next matching text.
<u>F</u> <u>i</u> <u>n</u> <u>d</u> <u>P</u> <u>r</u> <u>e</u> <u>v</u> <u>i</u> <u>o</u> <u>u</u> <u>s</u>	Finds the previous matching text.
<u>R</u> <u>e</u> <u>p</u> <u>l</u> <u>a</u> <u>c</u> <u>e</u>	Replaces specific text with different text.
<u>F</u> <u>i</u> <u>n</u> <u>d</u> <u>N</u> <u>e</u> <u>x</u> <u>t</u> <u>W</u> <u>o</u> <u>r</u> <u>d</u>	Finds the next occurrence of the selected text.
<u>F</u> <u>i</u> <u>n</u> <u>d</u> <u>P</u> <u>r</u> <u>e</u> <u>v</u> <u>i</u> <u>o</u> <u>u</u> <u>s</u> <u>W</u> <u>o</u> <u>r</u> <u>d</u>	Finds the previous occurrence of the selected text.
<u>F</u> <u>i</u> <u>n</u> <u>d</u> <u> </u> <u>i</u> <u>n</u> <u>F</u> <u>i</u> <u>l</u> <u>e</u> <u>s</u>	Searches for a string in multiple files.
<u>G</u> <u>o</u> <u> </u> <u>t</u> <u>o</u> <u>L</u> <u>i</u> <u>n</u> <u>e</u>	Goes to specified line in the active document.
<u>M</u> <u>a</u> <u>t</u> <u>c</u> <u>h</u> <u>B</u> <u>r</u> <u>a</u> <u>c</u> <u>e</u>	Searches for a matching brace.
<u>S</u> <u>e</u> <u>l</u> <u>e</u> <u>c</u> <u>t</u> <u>B</u> <u>r</u> <u>a</u> <u>c</u> <u>e</u>	Searches for a matching brace and select the text.
<u>J</u> <u>u</u> <u>m</u> <u>p</u> <u>t</u> <u>o</u> <u> </u> <u>F</u> <u>i</u> <u>l</u> <u>e</u>	Jumps to a file using output window pattern.
<u>G</u> <u>o</u> <u> </u> <u>t</u> <u>o</u> <u>U</u> <u>R</u> <u>L</u>	Goes to the highlighted URL.
<u>T</u> <u>o</u> <u>g</u> <u>g</u> <u>l</u> <u>e</u> <u>M</u> <u>a</u> <u>r</u> <u>k</u> <u>e</u> <u>r</u>	Set and clear marker at current line.
<u>C</u> <u>l</u> <u>e</u> <u>a</u> <u>r</u> <u>A</u> <u>l</u> <u>l</u> <u>M</u> <u>a</u> <u>r</u> <u>k</u> <u>e</u> <u>r</u>	Clears all marker from the active document.
<u>N</u> <u>e</u> <u>x</u> <u>t</u> <u>M</u> <u>a</u> <u>r</u> <u>k</u> <u>e</u> <u>r</u>	Goes to next marker position.
<u>P</u> <u>r</u> <u>e</u> <u>v</u> <u>i</u> <u>o</u> <u>u</u> <u>s</u> <u>M</u> <u>a</u> <u>r</u> <u>k</u> <u>e</u> <u>r</u>	Goes to previous marker position.
<u>F</u> <u>u</u> <u>n</u> <u>c</u> <u>t</u> <u>i</u> <u>o</u> <u>n</u> <u> </u> <u>L</u> <u>i</u> <u>s</u> <u>t</u>	Shows the function list.

Find command (Search menu)

Use this command to search specific text in current document. This command presents [Find dialog box](#).

Shortcuts

Toolbar: ■
Keys: Ctrl+F

Find Next command (Search menu)

Use this command to search for next matching word.

Shortcuts

Keys: F3

Find Previous command (Search menu)

Use this command to search for previous matching word.

Shortcuts

Keys: Shift+F3

Find dialog box

In this dialog box, you can find specific text in current document. Following options are available.

Find What

Enter text that you want to search for. EditPlus supports regular expression. You can press down-arrow button for regular expression templates. See [Regular Expression](#) for more details.

Find

Press this button to find specified text with current options.

Set Marker

Press this button to find all occurrences of the specified text in the current document and set markers to them.

Case sensitive

Check this option if you want case-sensitive searching.

Whole word only

Check this option if you want to search whole word only and ignore text which is a substring of another word.

Regular expression

Check this option if you want to search regular expression. Regular expression allows more sophisticated and powerful search. See [Regular Expression](#) for more detail about regular expression syntax.

Up

Check this option if you want to search upward from current position.

Down

Check this option if you want to search downward from current position

Wrap at the end of file

When end of file is reached, resume search from the start.

More/Less

Press this button to show the multi-line input field. You can enter multi-line text in this input box. Press Ctrl+Tab to enter a tab character in this input box.

Regular Expression

Regular expression is a search string that contains normal text plus special characters which indicate extended searching options. Regular expression allows more sophisticated search and replace.

For example, you can find any digit by using regular expression "[0-9]". Similarly you can find any matching character that is NOT digit by using regular expression "[^0-9]".

EditPlus supports following regular expressions in Find, Replace and Find in Files command.

Expr	Description
ession	
\t	Tab character.
\n	New line.
.	Matches any character.
	Either expression on its left and right side matches the target string. For example, "a b" matches "a" and "b".
[]	Any of the enclosed characters may match the target character. For example, "[ab]" matches "a" and "b". "[0-9]" matches any digit.
[^]	None of the enclosed characters may match the target character. For example, "[^ab]" matches all character EXCEPT "a" and "b". "[^0-9]" matches any non-digit character.
*	Character to the left of asterisk in the expression should match 0 or more times. For example "be*" matches "b", "be" and "bee".
+	Character to the left of plus sign in the expression should match 1 or more times. For example "be+" matches "be" and "bee" but not "b".
?	Character to the left of question mark in the expression should match 0 or 1 time. For example

"be?" matches "b" and "be" but not "bee".

- ^ Expression to the right of ^ matches only when it is at the beginning of line. For example "^A" matches an "A" that is only at the beginning of line.
- \$ Expression to the left of \$ matches only when it is at the end of line. For example "e\$" matches an "e" that is only at the end of line.
- () Affects evaluation order of expression and also used for tagged expression.
- \ Escape character. If you want to use character "\" itself, you should use "\\".

The tagged expression is enclosed by (). Tagged expressions can be referenced by \0, \1, \2, \3, etc. \0 indicates a tagged expression representing the entire substring that was matched. \1 indicates the first tagged expression, \2 is the second, etc. See following examples.

Original	Search	Replace	Result
abc	(ab) (c)	\0-\1-\2	abc-ab-c
abc	a (b) (c)	\0-\1-\2	abc-b-c
abc	(a) b (c)	\0-\1-\2	abc-a-c

Replace command (Search menu)

Use this command to search specific text in current document and replace it with different text. This command presents [Replace dialog box](#).

Shortcuts

Toolbar: ■
Keys: Ctrl+H

Replace dialog box

In this dialog box, you can find specific text and replace it with different text in current document. Following options are available.

Find What

Enter text that you want to search for. EditPlus supports regular expression. You can press down-arrow button for regular expression templates. See [Regular Expression](#) for more detail.

Replace With

Enter text that you want to replace the found text with. EditPlus supports regular expression. You can press down-arrow button for regular expression templates. See [Regular Expression](#) for more detail.

Find

Find specified text with current options.

Replace

Replace found text with specified text. If the text is not found yet, this is same as Find command.

Replace All

Perform find and replace for the current document, all open documents or current selection without prompts.

Case sensitive

Check this option if you want case-sensitive searching.

Whole word only

Check this option if you want to search whole word only and ignore text which is a substring of another word.

Regular expression

Check this option if you want to search regular expression. Regular expression allows more sophisticated and powerful search. See [Regular Expression](#) for more detail about regular expression syntax.

Up

Check this option if you want to search upward from current position.

Down

Check this option if you want to search downward from current position

Wrap at the end of file

When end of file is reached, resume search from the start.

Replace all range

Specify the range of Replace All command.

More/Less

Press this button to show the multi-line input field. You can enter multi-line text in this input box. Press Ctrl+Tab to enter a tab character in this input box.

Find Next Word command (Search menu)

Use this command to search the next occurrence of the selected text. This command uses current word if there is no selection.

Shortcuts

Keys: Ctrl+F3

Find Previous Word command (Search menu)

Use this command to search the previous occurrence of the selected text. This command uses current word if there is no selection.

Shortcuts

Keys: Ctrl+Shift+F3

Find in Files command (Search Menu)

Use this command to search specific text in multiple files. This command presents Find in Files dialog box.

Shortcuts

Toolbar: ■

Find in Files dialog box

In this dialog box, you can find specific text in multiple files. Following options are available.

Find What

Enter text that you want to search for. EditPlus supports regular expression. You can press down-arrow button for regular expression templates. See [Regular Expression](#) for more details.

File type

Enter wild card pattern of the files that you want to find text in. When you specify more than one pattern, separate each one with semicolon(;). For example, if you want to find in HTML files, use "*.html;*.htm".

Folder

Specify the folder where the searching takes place.

All open files

Check this option to search all open documents instead of using the content of the File Type and Folder fields.

Current file

Check this option to search current file only instead of using the content of the File Type and Folder fields.

Current file directory

Check this option to search in current file directory instead of using the content of the Folder field.

Include sub-folders

Search also sub-folders of the specified folder.

Case sensitive

Check this option if you want case-sensitive searching.

Save open files

Check this option to automatically save all open files before searching.

Regular expression

Check this option if you want to search regular expression. Regular expression allows more sophisticated and powerful search. See [Regular Expression](#) for more detail about regular expression syntax.

Whole word only

Check this option if you want to search whole word only and ignore text which is a substring of another word.

Show duplicated lines

Check this option if you want the output window to show all the occurrences even if they are on a same line.

Find

Find specified text with current options.

More/Less

Press this button to show the multi-line input field. You can enter multi-line text in this input box. Press Ctrl+Tab to enter a tab character in this input box.

Go To Line command (Search Menu)

Use this command to go to specific line in the document. This command presents Go To Line dialog box.

Shortcuts

Toolbar: ■
Keyboard: Ctrl+G

Match Brace command (Search menu)

Use this command to search for matching brace for current character.

Shortcuts

Keys: Ctrl+]

Select Brace command (Search menu)

Use this command to search for a matching brace and select the text between the matching braces.

Shortcuts

Keys: `Ctrl+Shift+]]`

Jump to File command (Search menu)

Use this command to jump to a file and locate the cursor to proper line. This command searches current line using output window pattern.

```
c:\autoexec.bat(5,10)
```

Run this command at above line. The file "c:\autoexec.bat" will be opened and cursor will be located at line 5, column 10.

Shortcuts

Keys: F7

Mouse: Alt + Double-click

Go to URL command (Search menu)

Use this command to go to a highlighted URL or extracted URL from current cursor position. If the URL is web site address, EditPlus opens internal browser window by default. If you want to run system default browser, you can set 'Use system default browser with Go to URL' option in General page of the Preferences dialog box.

Shortcuts

Keys: F8

Mouse: Ctrl + Double-click

Toggle Marker command (Search menu)

Use this command to set/clear a marker at current line. You can search for the marker position using Next Marker and Previous Marker commands.

Shortcuts

Keys: F9

Clear All Marker command (Search menu)

Use this command to clear all the markers currently set. This command is unavailable if there if no marker in current document.

Shortcuts

Keys: Ctrl+Shift+F9

Next Marker command (Search menu)

Use this command to search for next marker position. You can set/clear marker using [Toggle Marker](#) command.

Shortcuts

Keys: F4

Previous Marker command (Search menu)

Use this command to search for previous marker position. You can set/clear marker using [Toggle Marker](#) command.

Shortcuts

Keys: Shift+F4

Function List command (Search menu)

Use this command to shows the function list. This command presents Function List dialog box.

Shortcuts

Keys: Ctrl+F11

Function List dialog box

This dialog box shows the list of functions in the active document. You can invoke this dialog box using Function List command.

On Settings & Syntax page of the Preferences dialog box, you can set the regular expression for extracting the functions.

Go to

Go to the selected function.

Copy List

Copy the function list to the clipboard.

Document menu commands

The Document menu offers the following commands:

<u>A</u> <u>u</u> <u>I</u> <u>n</u> <u>d</u> <u>e</u> <u>n</u> <u>t</u>	Toggles the auto-indent feature of the active document.
<u>A</u> <u>u</u> <u>C</u> <u>o</u> <u>m</u> <u>p</u> <u>e</u> <u>t</u> <u>e</u>	Toggles the auto-completion feature of the active document.
<u>W</u> <u>o</u> <u>r</u> <u>d</u> <u>w</u> <u>r</u> <u>a</u> <u>p</u>	Toggles the word wrap feature of the active document.
<u>W</u> <u>o</u> <u>r</u> <u>d</u> <u>w</u> <u>r</u> <u>a</u> <u>p</u> <u>O</u> <u>p</u> <u>t</u> <u>i</u> <u>o</u> <u>n</u> <u>s</u>	Sets the word wrap options.
<u>T</u> <u>a</u> <u>b</u> <u>/</u> <u>I</u> <u>n</u> <u>d</u> <u>e</u> <u>n</u> <u>t</u>	Sets the tab and indent options.
<u>S</u> <u>e</u> <u>t</u> <u>C</u> <u>o</u> <u>l</u> <u>u</u> <u>m</u> <u>n</u> <u>M</u> <u>a</u> <u>r</u> <u>k</u> <u>e</u>	Sets column markers.
<u>S</u> <u>h</u> <u>o</u> <u>w</u> <u>C</u> <u>o</u> <u>l</u> <u>u</u> <u>m</u> <u>n</u> <u>M</u> <u>a</u> <u>r</u> <u>k</u> <u>e</u>	Shows or hides the column markers.
<u>N</u> <u>e</u> <u>x</u> <u>t</u> <u>C</u> <u>o</u> <u>l</u> <u>u</u> <u>m</u> <u>n</u> <u>M</u> <u>a</u> <u>r</u> <u>k</u> <u>e</u>	Goes to the next column marker position.
<u>P</u> <u>r</u> <u>e</u> <u>v</u> <u>C</u> <u>o</u> <u>l</u> <u>u</u> <u>m</u> <u>n</u> <u>M</u> <u>a</u> <u>r</u> <u>k</u> <u>e</u>	Goes to the previous column marker position.
<u>P</u> <u>C</u> <u>F</u> <u>i</u> <u>l</u> <u>e</u> <u>F</u> <u>o</u> <u>r</u> <u>m</u> <u>a</u> <u>t</u>	Sets the active document to the PC file format.
<u>U</u> <u>N</u> <u>I</u> <u>X</u> <u>F</u> <u>i</u> <u>l</u> <u>e</u> <u>F</u> <u>o</u> <u>r</u> <u>m</u> <u>a</u> <u>t</u>	Sets the active document to the UNIX file format.
<u>M</u> <u>A</u> <u>C</u> <u>F</u> <u>i</u> <u>l</u> <u>e</u> <u>F</u> <u>o</u> <u>r</u> <u>m</u> <u>a</u> <u>t</u>	Sets the active document to the MAC file format.
<u>C</u> <u>h</u> <u>a</u> <u>n</u> <u>g</u>	Changes file type of

e File current document.
Type
Refres Refreshes syntax file
h and auto-completion file.
STX/A
CP
Monito Monitors and insert the
r changed contents of
Clipbo clipboard.
ard
Set Sets current document
Read- read-only.
Only
Reloa Reloads current
d document from the disk
file.
Reloa Reloads current
d As document from the disk
file using a converter.
Perma Sets permanent
nent settings.
Settin
gs

Word Wrap command (Document menu)

Use this command to turn on or off the word-wrap feature of current document. Word-wrap feature helps to edit long lines more conveniently.

This setting will not be saved to the INI file. You can specify permanent value on [Settings & Syntax page](#) of the Preferences dialog box.

Shortcuts

Toolbar:
Keys: Ctrl+Shift+W

Auto Indent command (Document menu)

Use this command to turn on or off the auto-indent feature of current document. When this feature is turned on, a new line will be automatically indented same as previous line.

This setting will not be saved to the INI file. You can specify permanent value on [Settings & Syntax page](#) of the Preferences dialog box.

Shortcuts

Toolbar: ■

Auto Completion command (Document menu)

Use this command to turn on or off the auto-completion feature of current document. See [Auto Completion](#) for more details.

This setting will not be saved to the INI file. You can specify permanent value on [Settings & Syntax page](#) of the Preferences dialog box.

Word Wrap Options command (Document menu)

Use this command to set the word wrap options. This command presents [Word Wrap Options dialog box](#).

The settings will not be saved to the INI file. You can specify permanent values on [Settings & Syntax page](#) of the Preferences dialog box.

Word Wrap Options dialog box

In this dialog box, you can set the word wrap options. You can invoke this dialog box using Word Wrap Options command.

Enable word wrap

Check this option to turn on the word wrap feature.

Save wrapped lines with CR/LF

Check this option to add line breaks to all wrapped lines when you save document.

Word wrap method

Specify the word wrap method. Select 'Wrap at window edge' if you want long lines to be wrapped at window edge in word wrap mode. Select 'Wrap after format column number' if you want long lines to be wrapped after format column number in word wrap mode.

Format column number

Specify the format column number. If you select 'Wrap at Format Column number' as word wrap method, long lines will be wrapped after this format column number rather than at the window edge. Align Center and Align Right commands also use this value to calculate the alignment. The default value is 80.

Tab/Indent command (Document menu)

Use this command to set the tab and indent options. This command presents [Tab and Indent dialog box](#).

The settings will not be saved to the INI file. You can specify permanent values on [Settings & Syntax page](#) of the Preferences dialog box.

Tab and Indent dialog box

In this dialog box, you can set the tab and indent options. You can invoke this dialog box using Tab/Indent command.

Tab

Specify the tab size.

Indent

Specify the indent size.

Insert spaces instead of tab

Check this option to insert spaces instead of a real tab character when you press TAB key.

TAB key moves cursor by indent size

Check this option to make the TAB key moves the cursor position by the indent size rather than the actual tab size.

Enable auto indent

Check this option to use the auto indent feature.

Auto indent open

Specify an optional character which increases the indent. If you press 'Enter' key after this character, The next line will be automatically indented. Only one character is allowed in this field.

Auto indent close

Specify an optional character which decreases the indent. If you enter this character in the document, the line will be automatically un-indented. Only one character is allowed in this field.

End of statement

Specify an optional character which indicates the end of a statement. If you press 'Enter' key before this character, the next line will be automatically indented. Only one character is allowed in this field.

Set Column Marker command (Document menu)

Use this command to set column markers. You can turn column markers on or off using [Show Column Marker](#) command. This command displays [Set Column Marker dialog box](#).

This setting will not be saved to the INI file. You can specify permanent value on [Settings & Syntax page](#) of the Preferences dialog box.

Show Column Marker command (Document menu)

Use this command to show or hide the column markers. Column marker is a vertical line which indicates specific column location. Column marker can be useful for column oriented programming languages such as COBOL or FORTRAN.

Shortcuts

Keys: Alt+Shift+M

Next Column Marker command (Document menu)

Use this command to move the cursor to the next column marker position. You can set column marker using Set Column Marker command.

Shortcuts

Keys: Alt+Right

Prev Column Marker command (Document menu)

Use this command to move the cursor to the previous column marker position. You can set column marker using Set Column Marker command.

Shortcuts

Keys: Alt+Left

Set Column Marker dialog box

In this dialog box, you can set column marker positions. You can invoke this dialog box using Set Column Marker command.

Marker 1 - 5

Specify column marker positions.

PC File Format (Document menu)

Use this command to set the format of the active document to the PC format.

UNIX File Format (Document menu)

Use this command to set the format of the active document to the UNIX format.

MAC File Format (Document menu)

Use this command to set the format of the active document to the MAC format.

Change File Type command (Document menu)

Use this command to change file type of current document. This command presents Select File Type dialog box.

Select File Type dialog box

In this dialog box, you can select file type of current document or a new document. Select the file type you want on the list box. Select 'Automatic' if you want EditPlus to detect an appropriate syntax type automatically based on the file extension. You can invoke this dialog box using Change File Type command on Document menu.

Refresh STX/ACP command (Document menu)

Use this command to refresh syntax file and auto-completion file for current document. After editing STX or ACP file for current document directly, you should run this command to make the change take effect.

Monitor Clipboard command (Document menu)

Use this command to monitor changes of clipboard and insert the changed content into the end of current document. This command can be used for abbreviation of cut-and-paste operation. Any text which is copied or cut to the clipboard will be inserted into the current document. A check mark appears next to the menu item when this option is active.

Set Read-Only command (Document menu)

Use this command to set current file read-only. You cannot save read-only document. If you want to protect read-only files from editing, check the option in [Files page](#) of the Preferences dialog box.

Reload command (Document menu)

Use this command to reload current document from the disk file. This command discards all unsaved changes and clears the undo/redo buffer.

Reload As command (Document menu)

Use this command to reload current document from the disk file using a converter. This command discards all unsaved changes and clears the undo/redo buffer. This command presents Converters dialog box.

Permanent Settings command (Document menu)

Use this command to set permanent settings. All options on Document menu are only valid in current document and will not be saved to the INI file. You can set permanent settings on Preferences dialog box. This command invokes Settings & Syntax page of the Preferences dialog box.

Browser menu commands

The Browser menu is only available with the seamless browser window. You need IE 3 or higher installed on the system to use seamless browser window feature. The Browser menu offers the following commands:

<u>Favorites</u>	Displays the contents of your favorites folder.
<u>Edit Source</u>	Edits the source of current HTML page.
<u>Go Back</u>	Goes back one step.
<u>Go Forward</u>	Goes forward one step.
<u>Stop</u>	Stops loading current page.
<u>Refresh</u>	Refreshes content of current page.
<u>Font</u>	Selects the font size.
<u>Home</u>	Opens the start page.
<u>Search</u>	Searches the internet.
<u>Options</u>	Sets the browser options.

Favorites (Browser menu)

EditPlus allows access to favorites folder of IE. Select internet site that you want to visit.

Edit favorites

This command opens favorites folder where you can edit properties of favorites.

Favorites list

Select web site which you want to visit. Popup menu represents sub-folder of the main favorites folder.

Shortcuts

Browser Toolbar:



Edit Source command (Browser menu)

Use this command to loads or activates the source of current web page. EditPlus currently only supports local files and cannot edit the page on the remote URL.

Shortcuts

Browser Toolbar: ■
Keys: Ctrl+E

Go Back command (Browser menu)

Use this command to go back one step to last visited web page.

Shortcuts

Browser Toolbar: ■

Go Forward command (Browser menu)

Use this command to go forward one step to last visited web page.

Shortcuts

Browser Toolbar: ■

Stop command (Browser menu)

Use this command to stop loading current page.

Shortcuts

Browser Toolbar: ■

Refresh command (Browser menu)

Use this command to refresh content of current page.

Shortcuts

Browser Toolbar:



Home command (Browser menu)

Use this command to open the start page.

Shortcuts

Browser Toolbar: ■

Fonts command (Browser menu)

Use this command to set the font size of current page. This command presents Fonts popup menu.

Shortcuts

Browser Toolbar: ■

Search command (Browser menu)

Use this command to search the internet.

Shortcuts

Browser Toolbar:



Option command (Browser menu)

Use this command to specify internet preferences. This command presents Internet Option dialog box.

EditPlus Home Page command (Browser menu)

Use this command to visit the EditPlus Home Page.

Shortcuts

Browser Toolbar: ■

Project menu commands

The Project menu offers the following commands:

Select Select current project.
Projec
t
Add to Add current document to
Projec project.
t
Add Add all open documents
All to to project.
Projec
t
Edit Configure project
Projec settings.
t
Load Load all files of current
Projec project.
t
Projec Load a file of current
t File project.

Select Project command (Project menu)

Use this command to select specific project and make it an active project. You can add/remove project on [Project page](#) of the Preferences dialog box.

Add to Project command (Project menu)

Use this command to add current document into the project. You can also add/remove files on Project page of the Preferences dialog box.

Add All to Project command (Project menu)

Use this command to add all open documents into the project. You can also add/remove files on [Project page](#) of the Preferences dialog box.

Edit Project command (Project menu)

Use this command to configure project settings on Project page of the Preferences dialog box.

Load Project command (Project menu)

Use this command to load all files of current project. You can configure project settings on [Project page](#) of the Preferences dialog box.

Project File command (Project menu)

Use this command to load the specified file of current project. Project can be configured on [Project page](#) of the Preferences dialog box.

Tools menu commands

The Tools menu offers the following commands:

<u>Prefer</u> <u>ences</u>	Sets preferences.
<u>INI</u> <u>File</u> <u>Direct</u> <u>ory</u>	Sets the directory to store the configuration files (*.INI).
<u>Spell</u> <u>Check</u> <u>Docu</u> <u>ment</u>	Checks spelling in the active document.
<u>Spell</u> <u>Check</u> <u>from</u> <u>Curre</u> <u>nt</u> <u>Positio</u> <u>n</u>	Checks spelling in the active document from current position.
<u>Spell</u> <u>Check</u> <u>Selecti</u> <u>on</u>	Checks spelling in current selection.
<u>Spell</u> <u>Check</u> <u>Word</u>	Checks spelling in current word.
<u>Recor</u> <u>d</u> <u>Keystr</u> <u>okes</u>	Starts and stops the keystroke recording.
<u>Playb</u> <u>ack</u> <u>Recor</u> <u>ding</u>	Plays back the recorded keystrokes.
<u>Playb</u> <u>ack</u> <u>Multip</u> <u>e</u>	Plays back the recorded keystrokes multiple times.
<u>Export</u> <u>Recor</u> <u>ding</u>	Saves recorded keystrokes into external file.
<u>Import</u> <u>Recor</u> <u>ding</u>	Loads saved keystroke recording file.
<u>Sort</u>	Sorts the document or the selected text.
<u>Config</u> <u>ure</u> <u>User</u> <u>Tools</u>	Adds or removes user tools.

User Selects User Tool
Tool Group.
Group
s
User Runs user tools.
Tools

INI File Directory command (Tools menu)

Use this command to set the directory to store the configuration files (editplus.ini, tool.ini, project.ini, setting.ini, syntax.ini, workspace.ini, template.ini, ftp.ini, combo.ini). The configuration files are generated by EditPlus, and they should not be modified manually.

Spell Check Document command (Tools menu)

Use this command to check spell in current document. This command presents Spell Checker dialog box.

Shortcuts

Toolbar: ■

Spell Check From Current Position command (Tools menu)

Use this command to check spell from current position. This command presents Spell Checker dialog box.

Spell Check Selection command (Tools menu)

Use this command to check spell in current selection. This command presents Spell Checker dialog box.

Spell Check Word command (Tools menu)

Use this command to check spell in current word. This command presents Spell Checker dialog box.

Spell Checker dialog box

This dialog box appears when you run spell checker commands on Tools menu. In this dialog box, words that is not found in dictionary will be shown and suggests user several actions upon that words.

Not found

This field displays the word that was not found in the dictionary.

Change to

This field displays the word that will replace the wrong word. You can also enter a new word here if you want to change the suggested word.

Suggestions

This list box shows suggested corrections of the wrong word. Choose the correct word and it will be shown in Change To field. If there is no proper suggestion, you can directly edit Change To field.

Replace

Replace the wrong word with the content of Change To field. This command is not available if there is no suggestions. But if you edit Change To field, this command becomes available.

Replace All

Changes any following word which is same as current one.

Ignore

Ignore current word.

Ignore All

Ignore current word and any following word which is same as current one.

Add

Add current word to the user dictionary. You can specify location of user dictionary in [Spell Checker page](#) of the Preferences dialog box.

Add uncap

Add current word to the user dictionary and ignores capitalization of the word.

More

Search more thoroughly for suggested replacements for the current misspelled word. Each time you press the Suggest button, a "deeper" search is made.

Options

This command presents [Spell Checker page](#) of the Preferences dialog box where you can specify several spell-checking options.

Record Keystrokes command (Tools menu)

Use this command to begin or stop recording the keystrokes. Recorded keystrokes can be played back using [Playback Recording](#) command.

Shortcuts

Keys: Ctrl+Q

Playback Recording command (Tools menu)

Use this command to play back the recorded keystrokes. Keystrokes can be recorded using Record Keystroke command.

Shortcuts

Keys: Alt+1 - Alt+0

Playback Multiple command (Tools menu)

Use this command to play back the recorded keystrokes multiple times. This command presents input dialog box to specify the repeat time. Keystrokes can be recorded using Record Keystroke command.

Export Recording command (Tools menu)

Use this command to save the recorded keystrokes into external file. This command presents File Save As dialog box to specify the file name. Keystroke recording files have *.mac extension. Saved keystroke recording file can be loaded using Import Recording command. Also, you can specify keystroke recording file on User tools page on Preferences dialog box so that you can access it through Tools menu or through User Toolbar.

Import Recording command (Tools menu)

Use this command to load saved keystroke recording file. This command presents File Open dialog box to specify the file name. Keystroke recording files have *.mac extension. You can save recorded keystroke into keystroke recording file using Export Recording command.

Sort command (Tools menu)

Use this command to sort the document or the selected text. If the selection is a column selection, the selected text is used as the sort key.

Sort dialog box

This dialog box appears when you choose sort command on Tools menu. In this dialog box, you can set various options for the sort command.

Order

Choose the sort order. Either ascending order or descending order.

Starting column #

Enter a column number from which the sorting operation begins. The text before this column number will be ignored in comparison. Enter an integer value between 1 - 2000.

Case sensitive

Check this option for the case-sensitive comparison.

Remove duplicates

Check this option to remove any duplicated line after the sorting.

In character code order

Check this option to perform the comparison in character code order rather than the lexicographic comparison.

Configure User Tools command (Tools menu)

Use this command to add/remove/modify the user tools. User tool is user-defined application that EditPlus launches and optionally captures the output. This command presents [User Tools page](#) of the Preferences dialog box.

User Tool Groups command (Tools menu)

Use this command to select user tool group. There are 10 user tool groups available and you can add up to 20 user tools in each group. You can configure user tools groups and user tools on [User Tools page](#) of the Preferences dialog box.

Run User Tools command (Tools menu)

Use this command to run the specified user tool. User tools can be configured in [User Tools page](#) of the Preferences dialog box.

Shortcuts

Keys: Ctrl+0 - Ctrl+9

Preferences command (Tools menu)

Use this command if you want to set the options available in EditPlus. EditPlus does not use confusing multi-row tabbed property sheet, but offers preferences dialog box which consists of several pages. Categories are shown in the tree control. You can select the desired item to display the corresponding page.

General

Specify general options.

Fonts

Specify fonts for edit window, cliptext window and output window.

Colors

Specify colors for edit window, line number and output window.

Print

Specify print options such as margin, header/footer and printer properties.

Files

Specify file options.

Settings & Syntax

Specify settings and syntax highlighting for each file types. EditPlus supports multiple settings, so you can specify different settings for each different file types.

Templates

Customize file templates. Templates will be shown in File | New command.

Project

Customize project and favorites files.

Tools

Specify tool options.

User tools

Customize user-tools.

Keyboard

Customize keyboard shortcuts.

Spell checker

Specify spell checker options.

Toolbar

Customize toolbar buttons.

Shortcuts

Toolbar: ■

General page (Preferences dialog box)

In this page, you can specify general options of EditPlus. Following options are available.

Line space

Specify line space. The unit is percentage of height of a line.

Combo Box history

Specify number of combo box history. EditPlus maintains history of text that you entered in combo box. When you type text in the combo box, EditPlus will search the list and help you complete the remaining part of the text. If you enter 0 in this field, the combo box auto-completion feature will not be used.

Word delimiters

Specify delimiters that are used to determine work boundaries. You don't need to specify the space character and the tab character here, since those are treated as delimiter by default. This option can be overridden by #DELIMITER setting in the syntax file.

Reload working files on startup

Check this option to save the list of all open files and the cursor positions on exit. EditPlus reloads these files when it starts next time.

Allow multiple instances

Check this option to allow multiple instances of EditPlus to run at the same time.

Lock insert mode

Check this option to lock insert mode and does not change the state of the insert mode even if you press Insert key.

Close HTML tag automatically

Check this option to close brace automatically when you type HTML tags.

HTML tag in lower case

Check this option to insert HTML tags in lower case.

Use system default browser with Go to URL

Check this option to open system default browser rather than the seamless browser, when you run the 'Go to URL command'.

Working directory follows active document

Check this option to change the working directory automatically to match the active document.

HOME key goes to first non-space character

Check this option to move the cursor to the first non-space character when pressing the HOME key.

Create new document on startup

Check this option to create a new document on startup when there is no other active document.

Use EditPlus in Internet Explorer 5

Check this option to use EditPlus with the View Source command of Internet Explorer 5.

Add EditPlus to right mouse button

This option registers a shell extension which adds EditPlus command to the Context menu of the file in Explorer.

Fonts page (Preferences dialog box)

In this page, you can specify fonts. Following options are available.

Area

Choose area where current font setting should be applied. You can specify different font setting for each area.

Font

This window displays font names which is available on the system. Choose font name you want.

Font style

This window displays font style that is available in current font.

Size

Choose the size of the font.

Language

Choose language of current font.

Use font language for Unicode and IME conversion

Check this option to apply the language of the screen font when converting Unicode files or receiving input from Input Method Editor (IME).

Colors page (Preferences dialog box)

In this page, you can specify colors. Following options are available.

Area

Choose area where current color setting should be applied. You can specify different color setting for each area.

Foreground

Choose text color of current area. This command presents color picker.

Background

Choose background color of current area. This command presents color picker.

Default

Check this option to use default system color in current area.

Reset Default

Press this button if you want to reset all color settings to the default value.

Print page (Preferences dialog box)

In this page, you can specify how the document should be printed:

Margins

Sets the printing margin.

Draw margin in preview

Displays margins in preview mode

Header and footer

Specifies the header and footer text. You can use the [header/footer macros](#) as well as normal text.

Draw separating line

Draw line between the document and the header/footer.

Default

Resets the default values for the header and the footer.

Ignore text color

Ignores all the text colors and prints only in black and white.

Always apply word wrap

Applies word wrap when printing regardless of current settings.

Printer Setup

Invokes the Print Setup dialog box.

Header/Footer Macros

The following macros can be used in Footer and Header field in Print page of the Preferences dialog box.

Mac	Description
ro	
&f	Inserts current file name. The file name does not include path.
&F	Inserts current file name with full path.
&p	Inserts page number of current page.
&P	Inserts total number of pages of current document.
&d	Inserts current date.
&t	Inserts current time.
&s	Inserts time stamp of file.
&C	Align following text to center. This is default value if you don't specify any align option.
&L	Align following text to left.
&R	Align following text to right.

Files page (Preferences dialog box)

In this page, you can specify file options. Following options are available.

Number of recent file list

EditPlus maintains recent file list which appears at File menu. Specify the number of recent file which is shown in this list.

Auto-save interval

Specify the interval for the auto-saving feature. If you specify zero, the auto-saving feature will be disabled.

Auto save as *.tmp file

Check this option to auto-save to a temporary file rather than to the original file. The temporary file has a *.tmp extension appended to the original file name. If the program accidentally crashes, you can recover the unsaved document from the *.tmp file.

PC format

Check this option to set PC file format for newly created documents.

UNIX file format

Check this option to set UNIX file format for newly created documents.

MAC file format

Check this option to set MAC file format for newly created documents.

Backup file directory

Specify the directory where you want to save backup files. If this field is blank, backup files will be saved to the same directory with the original files.

Create backup file when saving

Check this option to create backup file when saving documents. The name of the backup file will be the same as the original document and have ".bak" extension.

Create backup file of remote file in backup directory

Check this option to create backup file when saving remote files. The backup file is saved in backup directory. If the backup directory is not specified or not present, the backup file will not be created.

Check file modification when activated

Check this option to enable checking modification of open files outside EditPlus. This might take some time if you edit files on networked drive with slow connection.

Reload modified files automatically

Check this option to reload automatically if the file is modified by other application.

Use JScript as default ASP language

Check this option to use JScript as default ASP language when it is not specified within the document. If this option is not checked, VBScript is used instead.

Protect read-only files from editing

Check this option to protect read-only files from being edited.

Check invalid CR/LF, null character when loading

Check this option to check if there is any invalid CR/LF or null character when loading file.

Support UTF-8 files without Byte Order Mark

Check this option to detect UTF-8 files automatically even if there is no Byte Order Mark. If this option is not selected, UTF-8 file will be saved with Byte Order Mark.

Settings page (Preferences dialog box)

You can specify different settings to each different file type. Following options are available.

File types

This window displays available file types. Choose file type which you want to set options for. You can add or remove file types using Add/Remove buttons.

Add

Press this button if you want to add a new file type. You can register up to 30 file types.

Remove

Press this button if you want to remove current file type. You cannot remove the default file types.

Description

Specify the description for current file type.

File extensions

Specify file extensions for current file type. You must separate each extension by semicolon(;). For example, HTML file type has following extensions - [html;htm;asp;shhtml](#).

Word wrap

Set the word wrap options. This button presents [Word Wrap Options dialog box](#).

Tab/Indent

Set the tab and indent options. This button presents [Tab and Indent dialog box](#).

Column Markers

Specify column markers for current file type. This button presents [Set Column Marker dialog box](#).

Syntax file

Specify the path of syntax file for current file type. To set the syntax highlighting colors, click Syntax Colors tab. See [Syntax highlighting](#) for more information about the syntax file.

Auto completion file

Specify the path of auto completion file for current file type. See [Auto completion](#) for more information about the auto completion file.

Function pattern

Specify the [Regular Expression](#) to use in the [Function List](#) command.

Add to 'Common Files'

Add the selected file type to Common Files filter.

Associate in Explorer

Check this option to associate current file type in Explorer. You can open the associated files by double-clicking it in Explorer.

Disable auto completion

Check this option to disable the auto completion feature for current file type.

Show HTML toolbar

Check this option to display HTML toolbar with current file type.

Syntax Colors tab

Press this tab to set the syntax highlighting colors for current file type.

Templates page (Preferences dialog box)

In this page, you can specify document templates which is shown on File|New menu. See [Document Template](#) for more detail about document template.

Templates

This box lists registered document templates.

Add

Add a new document template.

Remove

Removes the selected document template.

Reset Default

Press this button if you want to reset all the settings to default values.

Up

Moves up the selected document template.

Down

Moves down the selected document template.

Menu text

Specifies the description of the selected document template which will be shown on the menu item.

File path

Specifies the path of template file.

Load

Load current template file into the editor.

Project page (Preferences dialog box)

In this page, you can add or remove projects and its elements.

Projects

This box lists registered projects.

Add

Add a project.

Remove

Removes the selected project. You cannot remove the default project.

Up

Moves up the selected project. The default project cannot be moved.

Down

Moves down the selected project. The default project cannot be moved.

Titles

Specifies the description of the selected project, which will be shown on the menu item. You cannot change the title of the default project.

Add (File)

Add a specific file into current project. This command presents File Selection dialog box.

Remove (File)

Remove the selected file from current project.

Up (File)

Moves up the selected file.

Down (File)

Moves down the selected file.

Sort

Sorts the file list by name order.

Allow multi-column menu at file #

Check this option to display project menu in multiple columns if the number of files exceeds the specified value. This option is useful when there are so many files in a project that the menu cannot fit to the height of the screen.

Known Bug: On Windows 98 (4.10.1998), if the size of the multi-column menu is bigger than the size of the screen, the project popup menu will be invisible. But the project menu on the main menu bar will be displayed without any problem. Windows 95/NT 4.0 don't have this bug.

Tools page (Preferences dialog box)

In this page, you can specify Tools settings.

Select browser

Specify the browser type for the New Browser Window command and View in Browser command.

Browser location

Enter full path of the browser that you want to use for an external browser.

Web server root directory

If you have a web server installed on your system, you can enter full path of the WWW root directory here. When running 'View in Browser' command with the local file on this directory, EditPlus will change the address to "http://localhost/" form.

Web server IP or host name

If your web server cannot be represented by "localhost", you can enter an optional IP address or host name in this field.

Allow double-column toolbar

When this option is checked, the standard toolbar shows two columns when it is docked vertically. This prevents the toolbar from being clipped when the height of the toolbar is bigger than the size of screen.

Allow wrapping in HTML toolbar

This option allows the HTML toolbar to be wrapped when there is not enough space to show all buttons.

Use temporary file in browser preview

When this option is checked, View in Browser command uses temporary file to preview the HTML document.

User Tools page (Preferences dialog box)

In this page, you can configure user tools. User tool is user-defined application or Help file that EditPlus will launch and optionally capture the output.

Groups and tool items

Select user tool group in the combo box. There are 10 user tool groups and you can add up to 20 user tools in each group. The list box displays the menu text of user tools in current group, which will be shown on Tools menu.

Group Name

Press this button to change the name of current group.

Add

Press this button to add a new program, help file (*.hlp), HTML help file (*.chm) or keystroke recording file. You can add up to 20 tools in each group.

Remove

Press this button to remove current tool.

Up

Moves up the selected tool.

Down

Moves down the selected tool.

Menu text

Enter the text of the tool which will be displayed on the menu item.

Command/Help file/Keystroke recording file

Enter the full name of an executable file, a help file or a keystroke recording file.

Argument

Enter the argument that you want to pass to the tool. This option is not available when current tool is a help file or a keystroke recording file. You can also insert [Argument Macros](#) in this field.

Initial directory

Enter the initial directory where the tool should be executed. This command is not available when current tool is a help file or a keystroke recording file.

Capture output

Capture the output of the tool. This option is only applicable to console application. If you check this option, the output of the tool will be captured in the output window. This feature is useful when you want to capture error messages of a compiler. See [Output Window](#) for details.

NOTE: Output Window does not allow keyboard input. If the tool accepts keyboard input, you must turn off this option.

Output Pattern

Specify the output pattern for the tag jump in the output window. This button presents [Output Pattern dialog box](#).

Close window when exit

When this option is checked, the tool will be closed after it finished its operation. This option is only applicable to console applications. This option is not available if you checked Capture Output option.

Prompt for arguments

If this option is checked, a dialog that prompts argument will be shown before the tool starts. This argument will be appended to the existing one.

Run as text filter

If this option is turned on, selected text or entire document will be passed to the tool through 'Standard Input'. Then the text will be replaced by the output passed from the tool through 'Standard Output'. Text filter must be a console application which reads text from 'Standard Input' and writes the

output text to 'Standard Output'.

Save open files

If this option is turned on, all open files are automatically saved before running user tool.

Argument Macros

The following macros can be used in Argument field in User Tools page of the Preferences dialog box.

Macro	Description
\$(FilePath)	Inserts file name of current document with full path.
\$(FileDir)	Inserts full path of current document without the file name.
\$(FileName)	Inserts file name of current document without path.
\$(FileNameNoExt)	Inserts file name of current document without path and extension.
\$(FileExtension)	Inserts file extension of current document.
\$(ProjectName)	Inserts current project name.
\$(CurrentLine)	Inserts current line number where the cursor is located.
\$(CurrentColumn)	Inserts current column index where the cursor is located.
\$(CurrentSelection)	Inserts selected text.
\$(CurrentWord)	Inserts current word.
\$(WindowList)	Displays Window List dialog box and select desired file name.

Output Pattern dialog box

In this dialog box, you can specify output pattern for the tag jump in the [output window](#).

Use default output pattern

Check this option if you want to use the default output pattern. Default output pattern supports Microsoft compilers, Java/GCC, Perl, Borland (old) and other compatible compiler outputs.

Regular expression

Specify the [Regular Expression](#) for the output pattern. You can press the down-arrow button on the right to select from ready-made templates.

Regular expression tags

Select tagged expressions for file name, line number and column number.

Keyboard page (Preferences dialog box)

In this page, you can customize keyboard shortcuts.

Types

This window displays available command categories.

Commands

This window displays available commands in current category.

Reset All

Press this button if you want to reset all the keyboard shortcuts to default values.

Save As

Press this button if you want to save current keyboard shortcuts to an external file. You can load the file and restore the keyboard shortcuts later.

Load

Press this button if you want to load a saved keyboard shortcut file.

Press new shortcut

Press key that you want to assign to current command.

Current keys

This window displays shortcuts that is applied to current command.

Assign

Press this button if you want to assign shortcut you pressed to current command. Multiple shortcuts can be assigned to one command.

Remove

Press this button if you want to remove selected shortcut from current command.

Default

Press this button if you want to assign default shortcut key to current command.

Spell Checker page (Preferences dialog box)

In this page, you can set spell checker options.

Ignore words with numbers

Check this option to skip any words containing embedded digits.

Ignore URLs and E-mail addresses

Check this option to skip URLs and E-mail addresses.

Ignore all-caps words

Check this option to skip words that contain only capital letters.

Ignore mixed case

Press this button if you want to skip words that contain uppercase letter other than the first letter. For example ScanDisk, WordPad, etc.

Skip HTML tags

Press this button if you want to skip words inside HTML tags.

Dictionary

Choose dictionary to use with the spell checker. Currently EditPlus provides US English and UK English dictionaries only.

User dictionary

User dictionary file is a plain text file that has ".USD" extension. You can add items into this file by Add or Add Uncap command in the [Spell Checker dialog box](#).

Toolbar page (Preferences dialog box)

In this page, you can customize toolbar buttons.

Buttons

This list box lists buttons which can be inserted into a specific toolbar. Select button that you want to move, then press right arrow button or just drag-n-drop it.

Toolbar

This list box lists buttons which current toolbar has. Select button that you want to move, then press left arrow button or just drag-n-drop it.

Add (right arrow button)

Add selected button into the current toolbar.

Remove (left arrow button)

Remove selected button from current toolbar.

Move Up

Use this command if you want to move selected button up within current toolbar.

Move Down

Use this command if you want to move selected button down within current toolbar.

Reset Default

This command resets all button settings to default factory values.

Window menu commands

The Window menu offers the following commands, which allows you to arrange multiple views of multiple documents in the application window:

<u>N</u> ext	Switches to the next document window.
<u>P</u> revious	Switches to the previous document window.
<u>L</u> ast Visited	Switches to the last visited document window.
<u>C</u> ascade	Arranges windows in an overlapped fashion.
<u>T</u> ile Horizontally	Arranges windows as non-overlapping tiles horizontally.
<u>T</u> ile Vertically	Arranges windows as non-overlapping tiles vertically.
<u>A</u> rrange Icons	Arranges icons at the bottom of the window.
<u>M</u> inimize All	Minimizes all document windows.
<u>R</u> estore All	Restores all minimized document windows.
<u>S</u> plit	Splits the active window into panes.
<u>N</u> ext Pane	Switches to the next window pane.
<u>P</u> revious Pane	Switches to the previous window pane.
<u>C</u> lose All	Closes all document windows.
<u>W</u> indow 1, 2, ...	Goes to specified window.
<u>W</u> indow List	Shows list of all document windows.

Next command (Window menu)

Use this command to activates the next document window.

Shortcuts

Keys: Ctrl+Tab

Previous command (Window menu)

Use this command to activates the previous document window.

Shortcuts

Keys: Ctrl+Shift+Tab

Last Visited command (Window menu)

Use this command to activates the most recently visited window.

Shortcuts

Keys: F12

Split command (Window menu)

Use this command to split the active window into panes. You may then use the mouse or the keyboard arrows to move the splitter bars. When you are finished, press the mouse button or enter to leave the splitter bars in their new location. Pressing escape keeps the splitter bars in their original location.

Next Pane command (Window menu)

Use this command to switch to the next window pane.

Shortcuts

Keys: F6

Prev Pane command (Window menu)

Use this command to switch to the previous window pane.

Shortcuts

Keys: Shift+F6

Cascade command (Window menu)

Use this command to arrange multiple opened windows in an overlapped fashion.

Tile Horizontal command (Window menu)

Use this command to vertically arrange multiple opened windows in a non-overlapped fashion.

Tile Vertical command (Window menu)

Use this command to arrange multiple opened windows side by side.

Arrange Icons command (Window menu)

Use this command to arrange the icons for minimized windows at the bottom of the main window. If there is an open document window at the bottom of the main window, then some or all of the icons may not be visible because they will be underneath this document window.

Close All command (Window menu)

Use this command to close all document windows.

Minimize All command (Window menu)

Use this command to minimize all document windows.

Restore All command (Window menu)

Use this command to restore all minimized document windows.

Window 1, 2, ... command (Window menu)

EditPlus displays a list of currently open document windows at the bottom of the Window menu. A check mark appears in front of the document name of the active window. Choose a document from this list to make its window active.

Window List command (Window menu)

Use this command to show the list of all document window in Window List dialog box.

Shortcuts

Keys: F11

Window List dialog box

In this dialog box, all open document windows are listed in the list box so that you can switch or manage them easily. You can invoke this dialog box using Window List command.

List Box

You can see all open documents in this list box. Choose any file using arrow key and enter or double-click to switch to the file. You can choose multiple files using Shift or Ctrl key.

Activate

Activates the selected file.

OK

Activates the selected file and closes the dialog box.

Save

Saves the selected file(s).

Close Window(s)

Closes the selected file(s).

Tile Horizontally

Arranges selected files as non-overlapping horizontal tiles and minimizes the rest.

Tile Vertically

Arranges selected files as non-overlapping vertical tiles and minimizes the rest.

Up/Down

Moves selected document up or down. You can use this command when you want to change the order of the documents on the Document Selector.

Upload

Uploads the selected file(s) to FTP server. This command presents Upload Multiple dialog box.

Help menu commands

The Help menu offers the following commands, which provide you assistance with this application:

<u>Help Topics</u>	Offers you an index to topics on which you can get help.
<u>Content Help</u>	Displays help on clicked on buttons, menus and windows.
<u>Keyboard Map</u>	Shows the keyboard map.
<u>Order Now</u>	Shows ordering information dialog box.
<u>Enter Registration Code</u>	Enters registration code.
<u>Feedback and Support</u>	Display information about feedback and support.
<u>About</u>	Displays the version number of this application.

Help Topics command (Help menu)


Use this command to display the opening screen of Help. From the opening screen, you can jump to step-by-step instructions for using EditPlus and various types of reference information.

Once you open Help, you can click the Contents button whenever you want to return to the opening screen.

Context Help command (Help menu)

Use the Context Help command to obtain help on some portion of EditPlus. When you choose the Toolbar's Context Help button, the mouse pointer will change to an arrow and question mark. Then click somewhere in the EditPlus window, such as another Toolbar button. The Help topic will be shown for the item you clicked.

Shortcuts

Toolbar: 
Keys: Shift+F1

Keyboard Map command (Help menu)

Use this command to see the keyboard shortcuts currently assigned. You can modify the default keyboard shortcuts on [Keyboard page](#) of the Preferences dialog box.

Order Now command (Help menu)

Use this command to show ordering information dialog box. See [How to register](#) for more details on registration.

Enter Registration Code command (Help menu)

Use this command to enter registration code which will unlock the evaluation version of EditPlus. This command presents Enter Registration Code dialog box. See How to register for more details on registration.

Enter Registration Code dialog box

In this dialog box, you can enter registration code which unlocks the evaluation version of EditPlus. Registration code is delivered to registered user. See [How to register](#) for more details. If you have any trouble in registration process, please contact the author at support@editplus.com.

User name

Enter exact user name which is delivered to you with the registration code.

Registration code

Enter exact registration code.

About command (Help menu)

This command presents About dialog box which displays the copyright notice and version number of your copy of EditPlus.

About dialog box

This dialog box displays copyright information, name of the registered user, and system informations. If you registered EditPlus, your name will be displayed here. For more information about registration, see [How to register](#).

See also:

[How to register](#)

[License Agreement](#)

Command-line options and DDE commands

Command-line options

- Locate cursor at "line" and "column".
cursor
line:
column

-d Startup directory.
directory

-e Load a file into an existing instance of EditPlus.

-i INI file directory.
directory

-n Creates a new document.

-o Opens a file into the output window.

-p Prints a file.

-r Opens a file as read-only.

-t Set the file type. "FileType" must be one of the descriptions of file types on [Settings & Syntax page](#) of the Preferences dialog box.
FileType
ype

-w Do not load saved workspace

e.

DDE commands

```
[acti  Activates
vate]  EditPlus.

[curs  Locate
or("l  cursor at
ine:c  "line" and
olumn  "column".
")]

[open  Opens a
("fil  file.
e")]

[open  Opens a
_read  file as
("fil  read-only.
e")]

[open  Opens a
_outp  file into
ut("f  the output
ile")  window.
]

[prin  Prints a
t("fi  file.
le")]

[type  Sets the
("Fil  file type.
eType  See "-t"
")]    command
        line
        option.
```

DDE Service: editplus.exe

DDE Topic: system

No spaces allowed in DDE commands.

