



# Contents

With WaveSong, relax to the sounds of nature.  
Getting Started.

Controls

Menu Commands

Troubleshooting

Advanced Topics

Registration

More Neat Stuff

# Controls

## Main Window

[Volume](#)

[Tempo](#)

[Sound](#)

[Play](#)

[Stop](#)

## General dialog

[Play on startup](#)

[Minimize on startup](#)

[Always on top](#)

[Taskbar Tray Icon](#)

## Timer dialog

[Enable Timer](#)

[Fixed Play Length](#)

[\(fixed play length\) minutes](#)

[Random Play](#)

[\(random play\) average play minutes](#)

[\(random play\) average sleep minutes](#)

[Fixed Play Time](#)

[start time](#)

[stop time](#)

## Screen Saver dialog

[When screen saver starts](#)

[Start sound](#)

[Stop sound](#)

[No action](#)

[When screen saver stops](#)

[Start sound](#)

[Stop sound](#)

[No action](#)

Adjusts volume of sound output.

Adjusts "speed" of the nature sound, for example, the number of cricket chirps per unit time. This control is disabled for some sounds.

Select type of sound for playing.

"White" refers to white noise.

"Pink" is pink noise, with spectrum  $1/f$ .

Start sound output.

Alternate ways of starting sound include a command on the system menu, clicking on the taskbar tray icon, and using the built-in timer.

Stop sound output.

Alternate ways of starting sound include a command on the system menu, clicking on the taskbar tray icon, and using the built-in timer.

Begin sound output when program starts.



Start program as icon.

Keep program window on top of other windows.

Place application icon in taskbar tray.

This option is useful when the program is minimized for long periods of time, and reduces clutter on the taskbar.

Clicking the tray icon toggles sound output. Double-clicking opens the main WaveSong window. Right-clicking on the icon pops up a control menu.

Enable built-in timer.

Timer enable may also be toggled by menu selection or accelerator key control-T. When the Timer is enabled, a "Tmr" appears on the status bar.

Enable Fixed Length timer controls.

Use these controls to play sound for a fixed amount of time, e.g. 20 minutes.

If Fixed Play Length is selected, controls how long sound will play before stopping, in minutes.

Enable Random time length timer controls.

Use these controls to play sound and to rest for random time periods.

Average active play time for random timer.



Average silent time for random play.

Enable fixed timer controls.

Use these controls to start/stop sound at a fixed time, e.g. "11:30".

With these controls, use WaveSong as a unique alarm clock.

Enter time to start sound.

Examples of time formats recognized: "2:30AM", "14:30", "8:30pm".

Enter time to stop sound.

Examples of time formats recognized: "2:30AM", "14:30", "8:30pm".

Controls what action is taken when screen saver activates.

Sound starts when screen saver activates.

Use this option if you want to add sound to your screen saver.

Stop sound when screen saver activates.

Use this option when you don't want sound with your screen saver.

Take no action when screen saver activates.



Controls what happens when screen saver exits.

Start sound when screen saver exits.

Stop sound when screen saver exits.

Take no action when screen saver stops.

## Menu Commands

### File

[Open Settings](#)  
[Save Settings](#)  
[Save Settings As](#)  
[Exit](#)

### Options

[Preferences](#)  
[Enable Timer](#)

### Help

[Contents](#)  
[Using help](#)  
[Register](#)  
[Purchase](#)  
[About](#)

Starts open-file dialog for settings file, with default extension ".INI" . This (ASCII-readable) file contains control setting information for volume, tempo, sound, etc.

Save control settings now.

Saves current settings ( volume, tempo, etc.) as a WaveSong settings file, with default extension ".INI"



Save program settings and exit.

Displays dialog window with advanced control settings.

Toggles enable of the built-in timer function, which is set up in the Options->Preferences->Timer command. When enabled, a check mark appears next to the Enable Timer menu selection.

The timer enable may also be toggled by the accelerator key control-T, or by a control on the Timer setup dialog. When the Timer is enabled, a "Tmr" appears on the status bar.

Displays main Help for this program

Shows how to use Help

Displays information to assist registration

Display information on purchasing this program.

Displays general information about the program



## Troubleshooting

### **Why don't I hear any sound?**

First, verify that your sound card plays sounds with other programs. For instance, use Media Player, which comes with Windows 3.1 and Windows95, to play a .WAV file. If you still don't hear any sounds, refer to your sound card manual. Good luck.

### **I can't make the sound loud enough with the Volume control**

Many sound cards come with a Mixer program applet which allows the user to individually control the volume of various resources on the sound card, such as digital sound output channel, MIDI, AUX, etc. If your sound card has such a mixer, try to adjust the channel variously labelled: .WAV Output, Digital sound Output, or something similar. Also, usually one control is used to adjust ALL the sound outputs together. Play with both these controls to get the desired sound volume range.

## Advanced Topics

### How Does WaveSong Work?

WaveSong plays digitized sound files, similar to .WAV files. However, .WAV files can be very large, on the order of 1 Megabyte for a minute of sound. WaveSong files are just a few tens of kilobytes long, and sounds can play for long periods of time and still seem "fresh". The program "expands" the sound by doing obvious tricks such as jumping around within the sound file, looping on a sound segment, varying volume, etc., as well as certain proprietary techniques. We hope you enjoy these sounds, and we welcome suggestions for improvements and additions.

### Shortcuts and Expert User Info...

To toggle between Play and Stop, use the right mouse button. This is especially handy when the application is minimized: just right click on the icon.

WaveSong can accept a command-line switch to begin listening immediately. This is useful to start up WaveSong from some other program like a Windows-batch utility or time-scheduler. If this filename argument is present, WaveSong starts playing immediately after initialization. The command invocation looks like:

```
<path>\wavesong /P
```

## Registration and Support

If you have already paid for any version of this program, and need a registration code for future updates, go to UPDATES.

If you have not purchased this program, you may use WaveSong for 30 days. If you wish to use this product beyond the 30 day trial period, you must register.

[License agreement](#)

## HOW TO PURCHASE

Purchasing WaveSong gives these benefits:

- You will receive a registration code, by e-mail if possible, which will instantly convert your program into Registered Mode, disabling all registration reminder features. This registration code will be good for several updates, so you can easily continue to obtain improved versions of the program via the Internet or other distribution channels. The latest versions of our programs may always be found at <http://www.sagebrush.com/~sells/>
- You will receive the latest and greatest version of this program, if needed.
- Several free updates for Windows95 versions of this program. (Modest shipping charge if needed.)
- Several free updates for Windows 3.1 releases of this program. (Modest shipping charge if needed.)
- Free mail support, and free e-mail support at [sells@sagebrush.com](mailto:sells@sagebrush.com) .
- E-mail upgrade announcements and new product announcements.
- Registration is the right thing to do. Registering allows us to continue upgrades to the program and introduce new products.

## Questions?

If you have any questions, feel free to contact us at [sells@sagebrush.com](mailto:sells@sagebrush.com) or our postal address: Sagebrush Systems, Inc., PO Box 3094, Corrales, NM USA 87048, or visit our Web site at <http://www.sagebrush.com/~sells/>

## **License Agreement**

***Copyright 1996,1997 Sagebrush Systems, Inc.***

***All rights reserved.***

***WaveSong TM Sagebrush Systems, Inc.***

INSTALLATION OF WaveSong ON YOUR COMPUTER SYSTEM IMPLIES AGREEMENT WITH THE TERMS AND CONDITIONS BELOW.

DISTRIBUTION OF WaveSong, ITS ACCOMPANYING PROGRAMS AND DOCUMENTATION IS CONSIDERED AS IS. SAGEBRUSH SYSTEMS, INC. OFFERS NO WARRANTIES OF ANY KIND, EXPRESSED OR IMPLIED. THIS INCLUDES, BUT IS NOT LIMITED TO, WARRANTIES OF MERCHANTABILITY OR FITNESS FOR A PARTICULAR PURPOSE. UNDER NO CIRCUMSTANCES WILL SAGEBRUSH SYSTEMS, INC. BE LIABLE FOR ANY DAMAGES WHICH RESULT FROM THE USE OF THIS PROGRAM OR THE INABILITY TO USE IT. EXCLUSION FROM LIABILITY INCLUDES, BUT IS NOT LIMITED TO, LOST PROFITS, LOST SAVINGS, OR ANY OTHER INCIDENTAL OR CONSEQUENTIAL DAMAGES.

THIS AGREEMENT SHALL BE GOVERNED BY THE LAWS OF THE STATE OF NEW MEXICO.

WaveSong is not free, public domain, or freeware. You may use WaveSong for a trial period of thirty days. To use WaveSong beyond this trial period, you must register and pay the applicable registration fee.

## How to Purchase This Program

WaveSong costs \$14.95 US (base price, standard edition). We offer these ways to purchase:

### Check or Postal Money Order-- Mail

Send a check or money order by mail. We really appreciate when our customers use this order method, as it keeps our overhead costs low so we can continue to offer quality products at a low price. We do not charge a shipping or handling fee to U.S. customers using this method of payment.

International postal money orders are a convenient payment method for our valued non-USA. customers.

[Mail-Order Registration Form](#)

### Credit Card-- Internet

If you are comfortable with purchasing on the Internet, point your Web browser to <http://www.sagebrush.com/~sells/>

A secure Web server is available for handling your credit card transaction.

### Credit Card-- 800 number

You can order with MasterCard, Visa, American Express, or Discover from PsL, Public (software) Library, by calling 800-2424-PsL or 713-524-6394 or by FAX to 713-524-6398 or by CIS Email to 71355,470. You can also mail credit card orders to PsL at P.O Box 35705, Houston, TX 77235-5705.

THESE NUMBERS ARE FOR CREDIT CARD ORDERS ONLY!!!!

THE AUTHOR OF THIS PROGRAM CANNOT BE REACHED AT THESE NUMBERS.

Any questions about the status of shipment of the order, refunds, registration options, product details, technical support, volume discounts, dealer pricing, etc., must be directed to Sagebrush Systems, P.O Box 3094, Corrales, NM 87048, [sells@sagebrush.com](mailto:sells@sagebrush.com).

To insure that you get the latest version, PsL will notify us the day of your order and we will ship the product directly to you. The price using this method of ordering is \$14.95 plus \$3.00 handling.

Refer to item number #14530. Please use the item number when ordering, to avoid any possible confusion.

### Retail

Sagebrush programs may be available in retail stores in some areas, sometimes bundled with other software or hardware.

### What You Get

When you purchase this program, here is the registration benefits you receive:

[Registration](#)

## More Neat Stuff

If you like this program (or even if you don't), be sure to check out these other software titles from Sagebrush Systems!

Programs are available from our Web site at

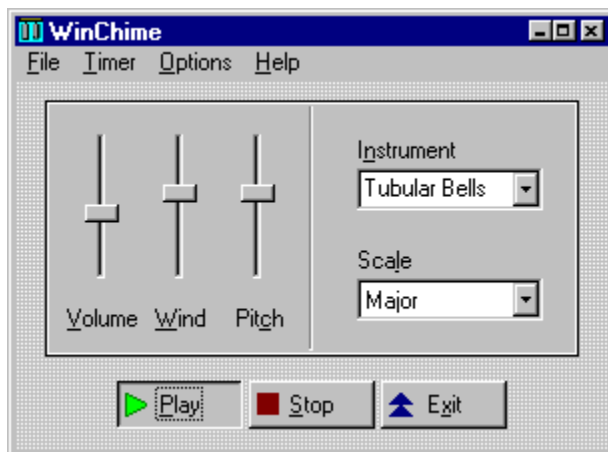
<http://www.sagebrush.com/~sells/>

and from ftp sites such as [ftp.winsite.com](ftp://winsite.com) and [ftp.simtel.net](ftp://simtel.net)



### WinChime for Win95 and Windows 3.1

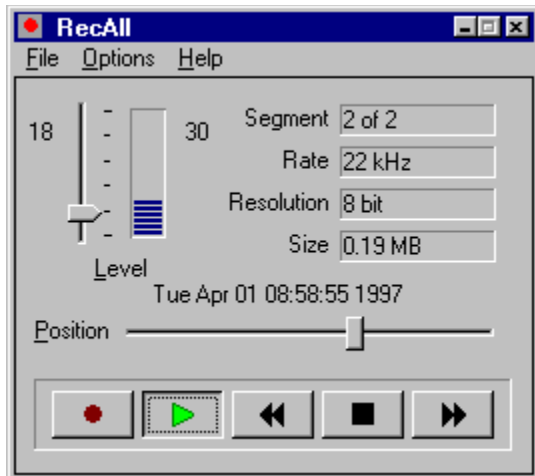
Relax to the peaceful sounds of wind chimes, as simulated with the MIDI capabilities of your sound card. Sound parameters are easily changed to fit your particular mood. A built-in timer can control on and off events to keep sounds interesting. This is a gentle way to mask out unwanted noise in the home or office.



### RecAll for Win95, WinNT4.0, and Windows 3.1

RecAll works like a voice-activated recorder for your computer. The program runs in the background, monitoring the microphone input of your sound card. Sound above a settable threshold triggers recording of .WAV data to disk. Recordings may be time-stamped.

Suggested uses include a handy note-taker for ideas and dictation, unattended monitoring of radio scanners, and security monitoring of your work environment.



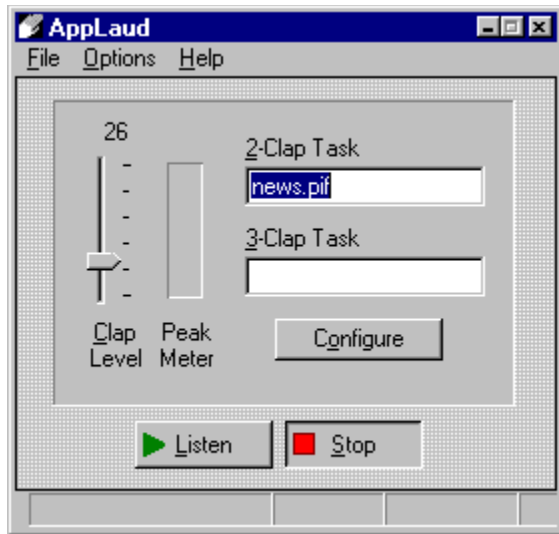
### **MouSing for Win95 and Windows 3.1**

Create eerie sounds by moving your mouse. This program is similar to a musical instrument called a Theremin, which responds to the musician's hand movements in the air near the instrument, but instead of detecting hand movements, we use a mouse. Movement in one direction changes pitch, and in another direction volume



### **AppLaud for Win95 and Windows 3.1**

Impress your friends! Turn your sophisticated multimedia computer into one of those gadgets-that-turn-things-on-and-off-by-clapping-your-hands. Applaud runs in the background, monitoring your sound card microphone input and detecting the noise signature of clapping. Different programs can be launched for two-clap and three-clap signals. Sound card with Automatic Gain Control (AGC) microphone input strongly recommended.



### More great programs appearing soon!

We are currently developing more software applications for Windows 95 and Windows 3.1.

For you Internet surfers, a WEB page is available at

<http://www.sagebrush.com/~sells/>

or you can email

[sells@sagebrush.com](mailto:sells@sagebrush.com)

to request for more details. Or better yet, register this software and get our latest product catalog and request to be on our e-mail or mail list for new announcements!



## Getting Started

Chances are, your system is already set up correctly for sound output if you have a sound card installed. Go ahead and try out WaveSong by clicking on the Play button. If you hear acceptable sound after adjusting the Volume slider control, you are all set! Otherwise, refer to the procedure detailed under "[Troubleshooting](#)".

Once you are getting sound output, you are ready to explore controls and menus, using context-sensitive help when needed.

Leaves About dialog without registering

Displays help-information for this dialog

Explains the shareware concept

[Click here to register your shareware, or to view registration information](#)

Activate timer set-up dialog.

# WaveSong v2.x/v1.x Registration form

Mail to:  
code24

Sagebrush Systems  
P.O. Box 3094  
Corrales, NM 87048

\_\_\_\_\_  
Name

\_\_\_\_\_  
Address

\_\_\_\_\_  
City,

State

ZIP

Country

\_\_\_\_\_  
Phone Number

\_\_\_\_\_  
Internet Address

Where did you obtain your copy of this program? (Please be specific, so we can insure all our distribution sources have the latest version. If you found this program by our Web page, how did you find our Web page?)

\_\_\_\_\_  
Yes, please notify me of major new releases. (Check if applicable.)

\_\_\_\_\_  
Yes, please notify me of new Sagebrush Systems products. (Check if desired.)

\_\_\_\_\_  
I don't have Internet access. If this is not the latest version, please send it.

\_\_\_\_\_  
3.5" double density floppy

\_\_\_\_\_  
5 1/4" double-sided double density floppy

Mark payment type:

\_\_\_\_\_  
Check (drawn on a U.S. bank in U.S. funds)

\_\_\_\_\_  
American Express money order in U.S. funds

\_\_\_\_\_  
International Postal Money Order in U.S. currency

(available at post offices world-wide)

Quantity \_\_\_\_\_ x \$14.95 \$ \_\_\_\_\_

NM residents add \$.92 gross receipts tax \$ \_\_\_\_\_

TOTAL \$ \_\_\_\_\_

On the back of this form, please feel free to write down any comments, suggestions for improvements, bug reports, kudos, and questions.

**Thank you for your order!!!!!!!!!!**

## **Updates for Previous Purchasers**

If you have already paid for this product (either directly from Sagebrush, by retail purchase, or bundled with a hardware purchase) :

### **Thank you!**

You may continue to obtain several updates to the software by getting a Registration Code. This code allows you to use future versions of the program, available on the Internet or other distribution channels, without being bothered by registration reminder screens. The latest program version is always available on the World Wide Web, at <http://www.sagebrush.com/~sells/>

We have chosen the Registration Code method for updating programs, rather than sending out new Registered Program Disks for every major update, for your convenience, to keep shipping costs down and to reduce delays.

### **How to get a Registration Code**

If you obtained this program by retail purchase, mail in the registration card, with your Serial Number, and we will send your code. Non-USA customers allow several weeks delay.

Alternatively, e-mail [sells@sagebrush.com](mailto:sells@sagebrush.com) with your name, address, program name, program Serial Number, version number, date and store purchased.

Or, if necessary, send the above information by mail to Sagebrush Systems, PO Box 3094, Corrales, NM (USA) 87048.

If you purchased an earlier version of this program directly from Sagebrush, you won't have a serial code, but send the other information.



## **Application Examples**

<Application Examples>

## Getting Started

<Getting Started>

## License agreement

<License>

**Mail-Order Registration Form**  
<Registration\_form>

**Registration form**  
<Registration form>

**Troubleshooting**  
<Troubleshooting>

**UPDATES**  
<Updates>





