

HOGMAN Version 1.01

Utility to manage DESCENT HOG-Files

With HOGMAN you can:

- extract Parts out of an existing HOG-File
- insert new Parts into an existing HOG-File
- remove Parts from an existing HOG-File
- create HOG-Files for new Levels

Notice:

HOGMAN is NOT from Parallax Software, the makers of Descent, and has nothing to do with them.

HOGMAN is based on the Descent file specification Version 0.10.

It is not allowed to change the original DESCENT.HOG file in any way.

Help is available for :

- [HOGMAN Mainwindow](#)
- [Pulldownmenus](#)
- [Copyright & Sharewareinformation](#)
- [Vendorinformation](#)

BTW: HOGMAN was done with Delphi from Borland, and It took more time to create the Helpfile than coding the HOGMAN.

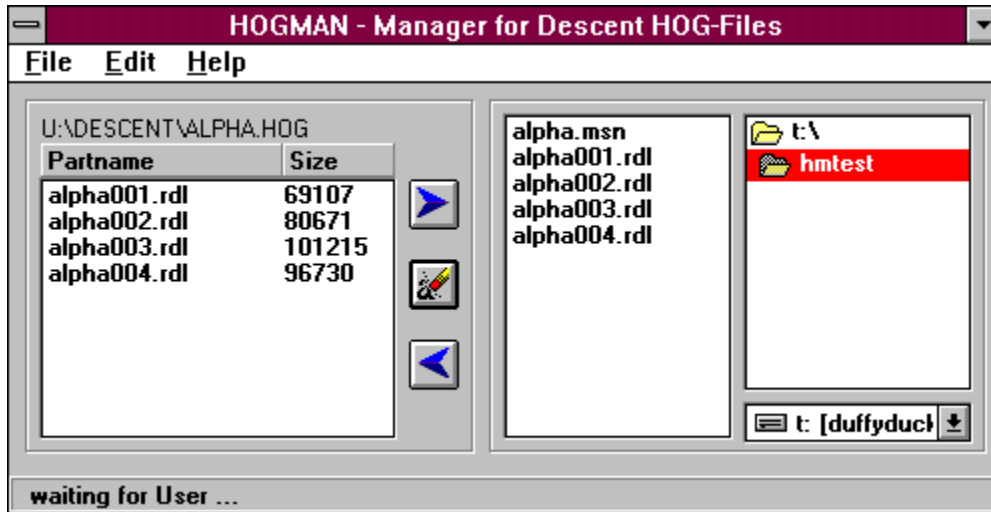
HOGMAN Mainwindow

The main window of HOGMAN is divided into 2 areas.

- The partlist on the left hand side.
- The Filebox on the right side.

The Main Window

(Click in to the window area you want to know more about!)



[Back to Contents](#)

Menues

HOGMAN has 3 Pulldown Menues

Pulldownmenu	Menufunction	Description
File	New	Create a new Partlist.
	Open	Open an existing HOG-File.
	Save	Save the parts in the partlist into the open HOG-File. The old HOG-File is stored with the extension .BCK
	Save As	Save the parts in the partlist into a new HOG-File. If there is an existing file with the same name, the old file is stored with the extension .BCK
Edit	HOG -> File	Create a single files from the parts marked in the partlist.
	File -> HOG	Insert the selected file into the partlist.
	Remove Part	Remove the selected parts from the partlist.
Help	Contents	Show this Helpfile.
	Hints on/off	Turn Hintfield on/off. Hints are little Boxes with a short Description, which are shown when the mouse is over a control. (Default on)
	Info ...	Display the information box

[Back to Contents](#)

Copyright & Shareware Information

HOGMAN 1.01 - Copyright

14 Apr 1995

This program and its associated files are part of a shareware package that is copyrighted by Alois Fischer and is not in the public domain.

There is **NO REGISTRATION FEE** for this Version of the Program.

NOTICE that this may change in later Versions.

Although there is no registration fee, you should register your Version. Registration can be done by sending a Mail to Alois Fischer.

But all kind of contributions are always welcome.

Contact:

Compuserve ID:	100022,3716
Internet:	100022.3716@compuserve.com
Postal	Alois Fischer
	Schrobenhausenerstr. 26
	80686 Munich
	Germany

[Back to Contents](#)

Vendorinformation

HOGMAN 1.01 - Vendor Notes

14 Apr 1995

This program and its associated files are part of a shareware package that is copyrighted by Alois Fischer and is not in the public domain.

The files that comprise the HOGMAN 1.0 shareware package may be freely distributed or listed by shareware vendors and BBS as long as files in the package are kept together and are not modified. Distribution fees may be charged for this program, but should not exceed \$10.

The shareware package may NOT be redistributed as part of a commercial product, without permission of the author.

Contact:

CompuServe ID:	100022,3716
Internet:	100022.3716@compuserve.com
Postal	Alois Fischer
	Schrobenhausenerstr. 26
	80686 Munich
	Germany

[Back to Contents](#)

File

The Filemenu consists of the following functions:

Menufunction	Description
New	Create a new Partlist.
Open	Open an existing HOG-File.
Save	Save the parts in the partlist into the open HOG-File. The old HOG-File is stored with the extension .BCK
Save As	Save the parts in the partlist into a new HOG-File. If there is an existing file with the same name, the old file is stored with the extension .BCK

The Filemenu consists of the following functions:

Edit

The Editmenu consists of the following functions:

Menufunction	Description
HOG -> File	Create a singel files from the parts marked in the partlist.
File -> HOG	Insert the selected file into the partlist.
Remove Part	Remove the selected parts from the partlist.

Help

The Helpmenu consists of the following functions:

Menufunction	Description
Contents	Show this Helpfile.
Hints on/off	Turn Hintfield on/off. Hints are little Boxes with a short Description, which are shown when the mouse is over a control. (Default on)
Info ...	Display the information box

HOGFile

Name of the HOG File to which the partlist belongs.

Partlist

This is a List of all parts in a HOG-File.

This list can be manipulated by the user. E.g. you can insert parts, extract parts and remove parts from this list. This doesn't effect the HOG-File until you save the HOG-File.

More then one part can be selected in the partlist.

Export

With this Button you can create files from every part which is selected in the partlist. The created files have the same filename as the parts in the partlist. They are stored in the current directory.

Remove

Removes the selected parts from the partlist.

Notice, that the HOG-File is not changed until it is saved.

Import

Inserts the selected files from the filelist into the partlist.
Notice, that the HOG-File is not changed until it is saved.

Filelist

This is a list of all files in the current directory.
More than one file can be selected in the filelist.

Dirtree

This directory list shows the current directory and the directories below. You can change the directory by double clicking a directory entry.

Drivebox

With this Combobox the current Drive can be selected.

Status

Area to diisplay status texts.

