

Speed Busters

AMERICAN HIGHWAYS



DRIVER'S GUIDE

Speed Busters: American Highways: The Shortcuts

Speed Busters: American Highways has a number of shortcuts that can be very useful in beating your opponents. However, you must bear in mind that some of these shortcuts can put you behind if you don't use them properly.

Here are some pointers on their location and the best way to take advantage of them.

California Track

There's only one shortcut here.

You have to make a left right after you pass the giant gorilla. Don't forget to use nitro to jump over the giant squid.



Mexico Track

Here, you'll find two shortcuts.

Immediately after the volcanic cavern, make a left-hand turn onto the raft of your choice (preferably the one closest to the shore). Get off on the other side, make another left turn and you're back on track.



The second one is easy. Just cross the suspended bridge near the native people and try not to hit the sides.



Louisiana Track

There are three shortcuts on this track.

The first one, and one of the most exciting and difficult one, is the train. Right after the first left-hand curve, there is a ramp leading onto the train tracks. If the train is there, you can jump on the flatbed wagons and it will take you into the first residential area. You have to get off quickly when you see the railroad crossing signs on the left. Keep two things in mind: it's very easy to fall off the train and it's very easy to miss the exit.



The second shortcut is located in the harbor. You have to jump onto a boat using the ramp to the right of the covered bridge. Make a right turn on the boat and get back on the road towards the right side. Remember this: cars are not made equal and they don't jump the same. Using your nitro or not can make a difference. And, when getting off the boat, be careful not to hit the railings.



The third shortcut is at the water treatment plant. When you get here, take a right turn instead of going on the ramp and make a quick left turn under it. For best results you should be under the ramp before the water arrives!



Canada Track

There are 5 shortcuts on this track.

First one: when you're on the grassy shoreline you will see a lighthouse to the left. The shortcut is located on the right just before the lighthouse. In order to use this shortcut effectively, you need to be going fast enough to jump on the roof of the fortress. Otherwise, you'll fall in the ditch. You can still exit the fortress but you will lose precious seconds.



Second one: when entering the lumberyard, keep to your left instead of going through the mill and jump through the giant fan. Watch out for the rotating blades, they're surprisingly bouncy!!!



Third one: as you approach the port, get ready to swerve right and left behind the wood piles. Get on the ramp and jump onto the bundles of wood. No violent movements please, slipping off will cost you dearly.



Fourth one: Boosss! Boosss! Theee plaaane, theee plaaane!

Well now, this one takes observation and precision. This shortcut is located on the right just before the offramp. If and only "if " the plane is there, jump on the platform and instantly slam on the brakes. Don't get off until the plane has finished moving. Oh yeah! If another player has used this shortcut just before you, it will take time to reset. So, don't even try to use it.



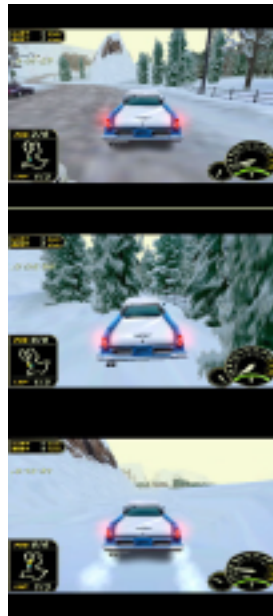
Fifth one: YEEHAAAAR ! (Dang! Them Duke boys ain't been caught yet?) Ok. See that nice barn with the hole in it approaching the start/finish line? And, see the nice ramp just in front of it? Well use it! :-) Just be careful not to catch the ramp too fast or you'll bounce off the side of the barn and you'll lose time.



Colorado track

Three shortcuts on this track.

The first one is located to the right of the start/finish line through the trees. Be precise and you'll be in front. Be sloppy and you'll be last.



The second one is located on the left of the road, just after the rocky arch where the avalanche occurs. You'll see an ice wall through the trees. Behind that ice lies a tunnel. Beware of falling ice stalactites though...



The third one is the frozen lake. You can get onto the lake by going straight after the second shortcut or by taking the road and going straight through the trees. To use it most effectively, you must try to keep a straight line by driving close to the right-hand side of the lake.



Nevada track

Only two shortcuts on this track.

The first one is located on the right beside the bridge where the UFO crashes (third lap). Take the gravel road and jump onto the train tracks below. When you land, step on the gas and head into the tunnel keeping your right side. If you don't master the art of jumping precisely, don't even consider using this shortcut. :-)



The second and last shortcut is located in Las Vegas beside the pirate ship. The entrance is located on the left immediately after the Excalibur tunnel. Keep it smooth, you don't want to fall in the water.:-)



The second one is easy. Just cross the suspended bridge near the native people and try not to hit the sides.



Louisiana Track

There are three shortcuts on this track.

The first one, and one of the most exciting and difficult one, is the train. Right after the first left-hand curve, there is a ramp leading onto the train tracks. If the train is there, you can jump on the flatbed wagons and it will take you into the first residential area. You have to get off quickly when you see the railroad crossing signs on the left. Keep two things in mind: it's very easy to fall off the train and it's very easy to miss the exit.



The second shortcut is located in the harbor. You have to jump onto a boat using the ramp to the right of the covered bridge. Make a right turn on the boat and get back on the road towards the right side. Remember this: cars are not made equal and they don't jump the same. Using your nitro or not can make a difference. And, when getting off the boat, be careful not to hit the railings.



The third shortcut is at the water treatment plant. When you get here, take a right turn instead of going on the ramp and make a quick left turn under it. For best results you should be under the ramp before the water arrives!



Canada Track

There are 5 shortcuts on this track.

First one: when you're on the grassy shoreline you will see a lighthouse to the left. The shortcut is located on the right just before the lighthouse. In order to use this shortcut effectively, you need to be going fast enough to jump on the roof of the fortress. Otherwise, you'll fall in the ditch. You can still exit the fortress but you will lose precious seconds.



Second one: when entering the lumberyard, keep to your left instead of going through the mill and jump through the giant fan. Watch out for the rotating blades, they're surprisingly bouncy!!!



Third one: as you approach the port, get ready to swerve right and left behind the wood piles. Get on the ramp and jump onto the bundles of wood. No violent movements please, slipping off will cost you dearly.



Fourth one: Boosss! Boosss! Theee plaaane, theee plaaane!

Well now, this one takes observation and precision. This shortcut is located on the right just before the offramp. If and only "if " the plane is there, jump on the platform and instantly slam on the brakes. Don't get off until the plane has finished moving. Oh yeah! If another player has used this shortcut just before you, it will take time to reset. So, don't even try to use it.



Fifth one: YEEHAAAR ! (Dang! Them Duke boys ain't been caught yet?) Ok. See that nice barn with the hole in it approaching the start/finish line? And, see the nice ramp just in front of it? Well use it! :-) Just be careful not to catch the ramp too fast or you'll bounce off the side of the barn and you'll lose time.



Colorado track

Three shortcuts on this track.

The first one is located to the right of the start/finish line through the trees. Be precise and you'll be in front. Be sloppy and you'll be last.



The second one is located on the left of the road, just after the rocky arch where the avalanche occurs. You'll see an ice wall through the trees. Behind that ice lies a tunnel. Beware of falling ice stalactites though...



The third one is the frozen lake. You can get onto the lake by going straight after the second shortcut or by taking the road and going straight through the trees. To use it most effectively, you must try to keep a straight line by driving close to the right-hand side of the lake.



Nevada track

Only two shortcuts on this track.

The first one is located on the right beside the bridge where the UFO crashes (third lap). Take the gravel road and jump onto the train tracks below. When you land, step on the gas and head into the tunnel keeping your right side. If you don't master the art of jumping precisely, don't even consider using this shortcut. :-)



The second and last shortcut is located in Las Vegas beside the pirate ship. The entrance is located on the left immediately after the Excalibur tunnel. Keep it smooth, you don't want to fall in the water.:-)



Speed Busters: American Highways - How to bust radar guns

This document will help you maximize your radar-bustin' revenues. We will tell you the minimum speed required as well as driving tips for each radar.

First of all, and this is valid for any curve, slow down before! Once you've passed the apex, Floor it! Oh and by the way, when we say "floor it" we really mean it! Step on the gas and use nitro if you still have any.

California Track

Radar #1: minimum speed: 220 mph



Keep to the right. When approaching the pier, gradually move towards the left. Once you're under it, Floor it (Nitro and all) and slowly let the car drift to the right. Be careful not to drive in the sand or you will lose precious momentum.

Radar #2: minimum speed: 220 mph



Stay to the right on the bridge. About three-car lengths before you get off it, swing left with the pedal to the metal, nitro, and voila! Money! Money! Money!

Radar #3: minimum speed: 260 mph



When you reach the palm trees, keep left until the first curve to the right. Go between the palm trees to get to the other side and floor it aiming right beside the police car. This takes precision so be careful not to panic or you'll be repairing lots of damage.

Mexico Track

Radar #1: minimum speed: 275 mph



Stay on the light-colored portion of the road. Start flooring it as soon as you pass the apex of the first real right curve. When you see the police car, aim left of it and keep steering left.

Radar #2: minimum speed: 260 mph



Floor it as soon as you see the straight road. Try to get on the bridge with a quick left-right swerve. If you took the raft shortcut, you probably won't have enough room to accelerate and bust this radar.

Radar #3: minimum speed: 215 mph



When in the tunnel, try not to pass through the light beam by keeping to your left. As soon as you see the exit, floor it!

Louisiana track

Radar #1: minimum speed: 210 mph



When you get to the first area with the white houses, slow down. Keep to the right after the first right-hand curve. Turn left and floor it aiming for the helicopter.

Radar #2: minimum speed: 200 mph



Start flooring it when you get on the bridge after the desert island. Stay left until you're almost off it and then keep left. Keep flooring it until you hear the sirens.

Radar #3: minimum speed: 245 mph



Take the shortcut to the right of the ramp in the water treatment plant. Turn left under the ramp and floor it all the way. Oh yeah! Keep in mind that water has a tendency of making you lose control and slowing you down. If you don't take the shortcut, try to keep a fluid line on the ramp and floor it as soon as you can see the police car.

Canada Track

Radar #1: minimum speed: 250 mph



Keep to the right at the start. Floor it turning left into the curve (smoothly). Be careful not to hit the side guards.

Radar #2: minimum speed: 210 mph



Here, you have two good choices: over or under.

Over: Jump on the roof of the fortress and keep to the right. Use nitro to get off the roof and floor it turning left as soon as you hit the ground.

Under: Drive inside the fortress. Floor it as soon as you get to the exit.

There ain't no way you're gonna bust the radar if you take the normal road. It's safe though.

If you happen to miss the shortcut and take the road, you should keep your right until you see the left-hand curve before the radar. As you turn into the curve, use the handbrake to slide around the bend. Then, floor it!

Radar #3: minimum speed: 210 mph



You basically have to straighten the curves. After the first left curve after the splitting road, floor it while driving in as straight a line as possible through the rest of the curves. Don't slow down until you've passed the second bump after the radar. Otherwise you'll pay a visit to the ditch.

If you take the flying shortcut and land too close to the front edge, try to backup a little on the platform. As soon as it stops, floor it turning slightly right.

Colorado Track

Radar #1: minimum speed: 260 mph



Stay to the right and as soon as you see the other side of the curve, floor it aiming left.

Radar #2: minimum speed: 280 mph



Floor it as soon as you're on the straight line and you see the helicopter. Aim for the space between the trees under the helicopter. You might want to take it easy on the ice after that.

If you take the tunnel shortcut, you'll have to maintain speed by crashing through the center of the ice walls. If you don't go through the center, the ice will slow you down and you won't bust the radar. Just floor it in the tunnel and keep going straight onto the frozen lake.

Radar #3: minimum speed: 200 mph



Take it easy through the city close to where the kids are throwing snowballs, keeping left after the first curve. Turn full right and floor it aiming for the front of the police car.

Nevada track

Radar #1: minimum speed: 260 mph



Keep left just before the right curve under the arch. Floor it turning right as soon as you see the helicopter. Smoothness is the key

Radar #2: minimum speed: 225 mph



Go over the bridge keeping right after the curve. Then, floor it aiming for the biker cop. Don't worry, he won't get hurt. **If you take the shortcut below the bridge, try not to hit the walls in the tunnel and floor it all the way.**

Radar #3: minimum speed: 230 mph



Remember radar #3 in California and Canada? Yeah! That's right! You have to go through the palm trees trying to keep your speed. Floor it as soon as you're between the trees aiming for the front of the police car.

That's it people! Remember that practice makes perfect. :-). Oh and sometimes it's better to finish third with a lot of money than to finish first with no money to buy anything or even repair your car.

Keep on Bustin'!