

POWER DoLLS2 plus DASH Editor Version 2.1
Copyright (C) 1998-1999 by eimei

^ê"ÊŽ-□€

ŠT—v

"±"ü•û-@

'€□î•û-@

'□^ÓŽ-□€

, "Šè,ç

fTfCfhfXfg□[fŠ□[

fo□[fWf#f"□î•ñ

^ê”ÊŽ-€

□y-¼□@□@□□z□@POWER DoLLS2 plus DASH Editor Version 2.1
□y“o ~^ -¼□z□@PD2PED21.LZH (- bytes)
□y□\$□iŽÒ-¼□z□@“y”ì %op-¾
□y☒f□ÚŽÒ-¼□z□@“y”ì %op-¾ (CQA15065)
□y“®□iŠÂ<<□z□@Windows95/98
□y☒f□Ú☒Ž“ú□z□@1999/02/-
□y□i□→•û-@□z□@LHA X PD2PED21
□y☒Y□řfL□[□z□@%CQA15065,\$WIN32,PD2PED,fQ□[f☒fc□[f<

□yŠj”ŠÂ<<□z NEC PC-9821Nb10 + Windows95(a)
□yŠj”☒¾☒ê□z Borland C++Builder 3
□y“®□iŠm”F□z NEC PC-9821V166%ü(200MHz) + Windows98
□y“]□U□đ☒□z Ž-‘O,Éf□□[f<,É,Ä~A—□,¾,¾,†□B
□y~A —□ □æ□z “y”ì %op-¾ (CQA15065@nifty.ne.jp)

“±“ü•û-@`

LHA.EXE“™,Å%øđ“€„μ,½ftf@fCf<,ð□C”C^Ó,ìftfHf<f_□[,ÉfRfs□[,μ,ÄŽg—p,μ,Ä,-
,¾,³,ç□B•s—p,É,È,Á,½ŽŽ,í□CfRfs□[,μ,½ftf@fCf<,ì,Ýí□œ,·,ê,î,n,j,Å,·□B

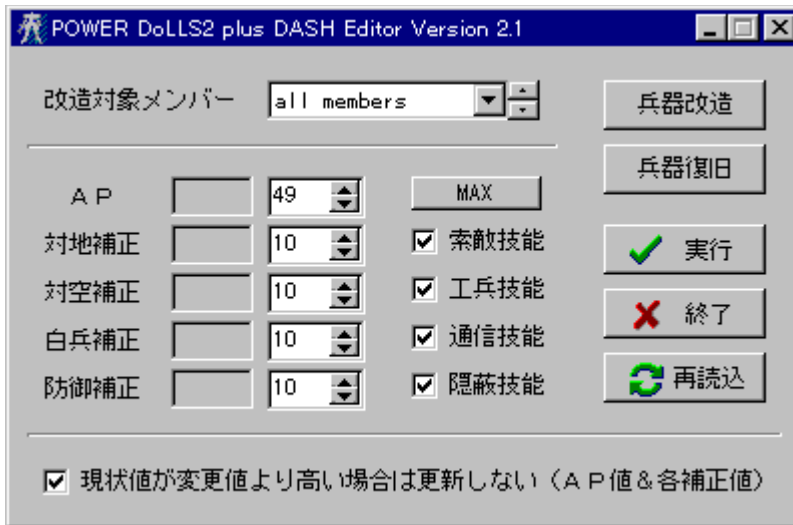
fRf}f“fhf%øfCf“flfvfVf‡f“,Æ,μ,Ä□C/G <y,Ñ /M ,ª, ,è,Ü,·□B
/G ,í□C•°Ší%øü‘ç,ìffftfHf<fg,lf`fFbfN□€-Ú,ð□CfWfAfXCER•°Ší,ì“\—
Íf_fEf“,ì,Ý,Æ,·,éflfvfVf‡f“,Å,·□B%øü‘ç,ª<É‘[%øß,¬,é,ÆŽv,í,ê,é•û,í□C,±,ì□€-
Ú,Æf□f“fo□[,ì%øü‘ç,ì,ÝŽg—p,³,ê,é,Æ—Ç,ç,Å,μ,â,æ□B
/M ,í□C, ` ,o‘l,ì□Ý‘è□ãœÀ,ðffftfHf<fg,ì 49 ,©,ç 99
,É•ï□X,·,éflfvfVf‡f“,Å,·□B,½,¾,μ□C•â³œã,ì, ` ,o,ª,Rœ...,É,È,é,Æ<@‘ì□ó<μ,ì•\Ž!,ª
—□,ê,Ü,·□B,»„ì,½,ß□C,±,ìflfvfVf‡f“Žg—pŽŽ,ì MAXf{f^f“,É,æ,é□Ý‘è‘l,í 76
,Æ,μ,Ä,ç,Ü,·□B,È,“□C /M ,í /G ,Æ,ì•¹—p,ð‘z‘è,μ,Ä,ç,Ü,·□B
,±,ê,ç,ì□í—p,É,í□CfVf‡□[fgfjfbfg,ðì□¬,μ□CfŠf“fN□æ,ÉflfvfVf‡f“,ð
%øÁ,ì,é,ì,ªŠÉ‘P,Å,μ,â,æ□B
—á,ì,í□CfŠf“fN□æ (“C:\POWER DoLLS2 plus DASH\PD2pDED.exe" /G /M)

‘€[]•ü-@

fc[]f<,l<N“® ,í[]CfQ[]f€ŠJŽn,ì‘O€ã[]C,Ç,¿,ç,Å,à,©,Ü,ç,Ü,¹,ñ[]B
fc[]f<,í[]fQ[]f€ŽÀ[]s’t,ì,ÝŽg—p%oÅ“\,Å,·[]B

f[]f“fo[][%oü‘ç

,P[]D%oü‘ç‘í[]Úf[]f“fo[][,ì‘l’ð
all members,Å‘S^ð,ð‘í[]Ú
,Q[]D,`,o‘l[]C•â[]³‘l[]C<Z“\,ì—L-³,ì[]Ý’è
MAXf{f^f“,Å,`,o‘l=49[]C•â[]³‘l=10(A)[]C‘S<Z“\—L,è,É[]Ý’è
,R[]DŽÀ[]sf{f^f“,É,æ,è[]C%oü‘ç,μ,Ü,·[]B
,S[]D[]Ä“Ç[]ž,í<Z“\,í[]f`fFbfN,ð“Ç,Ý’¼,μ,Ü,·[]B(ŽÀ[]s‘O,ì,Ý—L€ø)



•°Ší%oü‘ç

,P[]D•°Ší%oü‘çf{f^f“ ([]ã[])
,Q[]D%oü‘ç‘í[]Ú•°Ší,ì‘l’ð
,R[]DŽÀ[]sf{f^f“,É,æ,è[]C%oü‘ç,μ,Ü,·[]B
,S[]D%oü‘ç,ð-³€ø,É,·,éŽž,í[]C•°Ší•æ<€f{f^f“ ([]ã[])



'^ŏž-€

-{ftfg,íftfš[fEjFfA,Æ,μ,Ü,·B
-{ftfg,ìžg—p,É,æ,Á,Ä"¶,μ,½,ç,©,È,éášQ,àCìžÒ,íŠÖ'm,μ,È,ç
,à,ì,Æ,μ,Ü,·Bž©ÆÈ,ìO"C,É,"ç,Äžg—p,μ,Ä,,¾,¾,çB
fofoC—v-]™,íff[fç,É,Ä~A—,,¾,¾,çB,Ä,«,é"í^í,Á'í%ž,μ,½,ç,Æžv,ç,Ü,·B

fc[fç,ì«ž:žCfQ[f€,ìfo[fWfj",âfn[fhfEjFfAšÁ«É,æ,èC³í,Éì"® ,μ,È,ç
%Á"\«,ª,è,Ü,·B,±,ìê¶,í'í%ž,í"i,μ,ç,Æžv,ç,Ü,·B,²—%ž,,¾,¾,çB
žQI,Ü,Á,ÉCž,,ìšž,μ,Ä,ç,éfQ[f€,ìžÀsftf@fCf<(PD2.EXE)
,íTfCfY,ìC1,247,744 bytes,Á,μ,½B,±,íTfCfY,Æ^á,æê¶Cfo[fWfj"^á,ç,ì
%Á"\«,ª,è,Ü,·B

•Ší,ì%ü'ç<@"\,ž,žg—p,ìê¶CfQ[f€'t,í,Á,«,é,¾,¾,fc[fç,žì—¹,¾,¾,È,ç,Á
%º,¾,çBfc[fç,žì—¹,¾,¾,½,ì,žCÄžg—p,·,éê¶,ìC•K, fQ[f€,à,ç,Á,½,ñì—
¹,¾,¾,Ä,,¾,¾,çBfQ[f€,žì—¹,¾,¾,,Éfc[fç,žìžg—
p,·,é,ÆC•s"KØ,É'l,ªY'è,¾,èCfQ[f€,ªÆèì"®,·,éšèC~«,ª,è,Ü,·B

•Ší%ü'ç,žs,È,Á,½,Æ,«,ìZ[fuff[f^,žC-ç%ü'ç
,ìó'Ô,É"Ç,Ýž,p,Æff[f^,É•s®¶,ª¶,¶,Ü,·BfefXfg,μ,½"í^í,Á,ìC'v-
½"l,ÈÆèì"®,í,è,Ü,¹,ñ,Á,μ,½,ªC•sª,ìž-'Ô,ž"ž,è,é,½,ß,É,à—p,í"ž,~,Ä,-
,¾,¾,çB"—'R,ìž-,È,ª,çC-{fc[fç,žžg—
p,μ,½žž,ìZ[fuff[f^,É,æ,é^Uí,íff[fj[,íTfj[fjg"í^íŠO,Á,·B

,Ü,½C«"Á,ì%B,μ<@"\,žžg—p,¾,è,Ä,ç,é•û,ìC•Ší%ü'ç<@"\
,žžg,í,è,é'O,ÉC•K, fQ[f€,ìžÀsftf@fCf<,ž•æ«(Restore),μ,Ä,"ç,Ä,,¾,¾,çB

ì!-{fc[fç,ìCWin95/98è—p,Á,·BNT,Á,ìì"®,μ,Ü,¹,ñB

, "Šè, ç

, ç, Ü, Ü, Å, É, Ñ, Ì, µ, ½, ç, Í, C, Ù, Æ, ñ, Ç, æ, Z, fuff, f^
%öü' çfc, Å, µ, ½, Bf, fŠfGfffBf^f^fCfv, Í, C, ñ, æ, %ö
, ß, Ä, ì, fff, fW, Å, ·, B, " , Ú, !, ½, Ä, ì, mZ, ð—p, ç, Å, Ñ, Ì, µ, Ä, ç
, é^x, C, É, É, ©, Æ, s"s, æ, , é, ©, à, µ, ê, Ü, 1, ñ, B
; Æã, ÌŽQ, !, !, ½, ß, C, °, Ð, Æ, à, Æä^Ó, ©, â, ÆäŠ'z, ðf, f, ç, µ, Ä, , ¾, ¾, ç, BŽg, í, ê, Ä, ç
, éŠÅ««ifn, fhfE, FfA, C, n, r, !fo, fWfj, " " "™, j, à<³, !, Ä, ç, ½, ¾, , ê, Î, K, ç, Å, ·, B

y~A — æz "y"ì %öp-¾ (CQA15065@nifty.ne.jp)

fTfCfhfXfg[]fŠ[]

fWfAfXcERŽi—ß•”,É,Ä

Ži—ß []F f|f€fjCER,ì[]í—í,í[]H

•>Š˘ []F fpf[][]f[][]f_[][],R<@,Å,·[]B

Ži—ß []F %oä,ªCER,Í,RCEÂ’â’â[]B,±,ì[]ì[]í[]C[]ÿ,Á,½,È[]E[]E[]E[]B

•>Š˘ []F []E[]E[]E[]E[]E[]B

Ži—ß []F ,Ç,α,μ,½[]H

•>Š˘ []F []E[]E[]E[]E[]æ’ö,æ,è[]C’O[]ü,Æ,ì’Ê[]M,ª“r[]â,μ,Ä,ç,Ü,·[]B

Ži—ß []F []E[]E[]E[]E[]E[]E[]E[]E“!°,é,¼[]B

•>Š˘ []F ,í,Á[]I[]I

[]E[]E[]E[]E[]E^3“|“l,È[]«”\,ðCEÖ,é[]V•ºší **PD2pD Editor**
,ì’O,É[]CfWfAfXcER,ì%oó–Å,ÍŽžŠÔ,ì–â’è,Å, ,Á,½[]E[]E[]E[]E[]E

fo [fWf+f“ [î•ñ

***** Version 1.0 *****

1998/11

□%o”Å

fZ [fuff [f^fGfffBf^

DASHfVfifŠfl-č’í%ož (ĀöŠJĀě,É”»-¾)

***** Version 2.0 *****

1999/02

f [f,fŠfGfffBf^,É’S-Ê%oü’ù

DASHfVfifŠfl,É’í%ož

•°Ší%oü’č<@”\ĀöŠJ (Ver.1.0 %oB,μ<@”\’Š“-)

,»,’¼ [C [x, ©,ĚŽd—|Ā ©’¼,μ

***** Version 2.1 *****

1999/02

fVfifŠfl“à,Å,ì•°Ší%oü’č,É’í%ož

