



ftf@fCf<"äŠrfc[]f<[]uFileComp32[]v

Version 1.24

Copyright (C) 1997-2000 by.Monja (T.Akama)

[-,í,¶,ß,É

[@FileComp32,íAftf@fCf<,ð"ú•tAftfCfY[]A"à—e,Å"äŠr,.,éfc[]f<,Å.[]B
fofbfNfAfbfv,âfRfs[][CEã,lfxfŠftf@fC"™,É,Žg,ç,,¾,¾,ç[]BCD-R,É[]Å,ç,½CEã,lfxfŠftf@fC,Æ,μ,Ä,à
—~—p,Å,«,Ü,·[]B

[-"Á'¥

FileComp32,ì"Á'¥,Æ<@"\,í^È%º,ì'É,è,Å,·[]B

[]Eftf@fCf<,ð"ú•tAftfCfY[]A"à—e,Å,»è,¼,è"äŠr,.,é,±,Æ,ª,Å,«,Ü,·[]B
[]EfGfNfXfvf[][]f%º[]f%ºfCfN,É%ºæ-É,Åftf@fCf<,ð'l'ð,Å,«,Ü,·[]B
[]E"äŠrCE<%ºÉ,ì,µ,¿[]A"à—
e,ª^Ü,È,é,à,ì,í"^^êfAfhfCEfX,Åf_f"fvfŠfXfg[]i2[]i[]A10[]i[]A16[]i[]ASCII•\<L[]j,ð•\Ž!,Å,«,Ü,·[]B
[]E"äŠr'í[]Ú[]i"ú•tAftfCfY[]A"à—e[]j,ðŽ©—R,É•í[]X,Å,«,Ü,·[]B
[]E"äŠrCE<%ºÉ,ðftf@fCf<,É•Ú'¶,.,é,±,Æ,ª,Å,«,Ü,·[]B
[]EfIbfvgf[][]fNCEo—R,ì"äŠr,à,Å,«,Ü,·[]B
[]E10-œ^É[]ã,ìftf@fCf<"äŠr,ª,Å,«,Ü,·[]i,½,¾,μ[]A"<[]Úf[]f,fŠ,É^É'¶,μ,Ü,·[]j[]B

[-fCf“fXfg[]f<•û-@,È,Ç

[-FileComp32,ÉŠÖ,.,éftf@fCf<

[]‘ĈÉftf@fCf<,ð%øð“€,,μ,Û,.,Æ^È%øø,ìftf@fCf<,ª[]ì[]¬,³,è,Û,·[]B

- FComp32.exe - FileComp32 ŽÀ[]sftf@fCf<
- FComp32.hlp - FileComp32 fwf<fvftf@fCf<
- FComp32.cnt - FileComp32 fwf<fv fRf“fef“fcftf@fCf<
- FComp32.txt - ŠÈ^Ŏ[]à-¾f}fjf...fAf<

[-,;>,ì¼•K—v,Èftf@fCf<

“Á,Éftf@fCf<,í•K—v, ,è,Û,¹,ñ[]B

[-fCf“fXfg[]f<•û-@

fCf“fXfg[]f<[]Efvf[]fOf%øf€,í“Á,É[]ì[]¬,μ,Ä,ç,Û,¹,ñ[]B
“K[]Ø,ÉftfHf<f_É FComp32.exe[]AFComp32.hlp[]AFComp32.cnt ,ðfRfs[][,μ,Ä,-
,¾,¾,ç[]BFCComp32.hlp[]AFComp32.cnt ,í FComp32.exe ,Æ“~,¶ftfHf<f_ÉfRfs[][,μ,Ä,,¾,¾,ç[]B

f%øf“f^fCf€ftf@fCf<,È,Ç,í•K—v, ,è,Û,¹,ñ[]B

[-“@[]ŠÄ«

“ú-{}ĈÉ”ÅWindows95[]AWindows98[]AWindowsNT 4.0[]AWindows2000
RC2^È[]~,,Á“@[]ì,μ,Û,·[]B
ftf@fCf<[]î•ñ,ðf[]f,fŠ[]ã,É,à,Ä,½,ß[]Aftf@fCf<[]”,ª¼,çŽž,í,»,,ì•ªf[]f,fŠ,ð•K—v,Æ,μ,Û,·[]B
f[]f,fŠ,ì[],É,çŠÄ«,,ì[]Û,í[]AftfHf<f_’P^É,È,Ç,ç,,Ä,©,É•ª,,Ä”äŠr,μ,Ä,,¾,¾,ç[]B

“@[]ìŠm”F,í[]A^È%øø,Á[]s,ç,Û,μ,½[]B

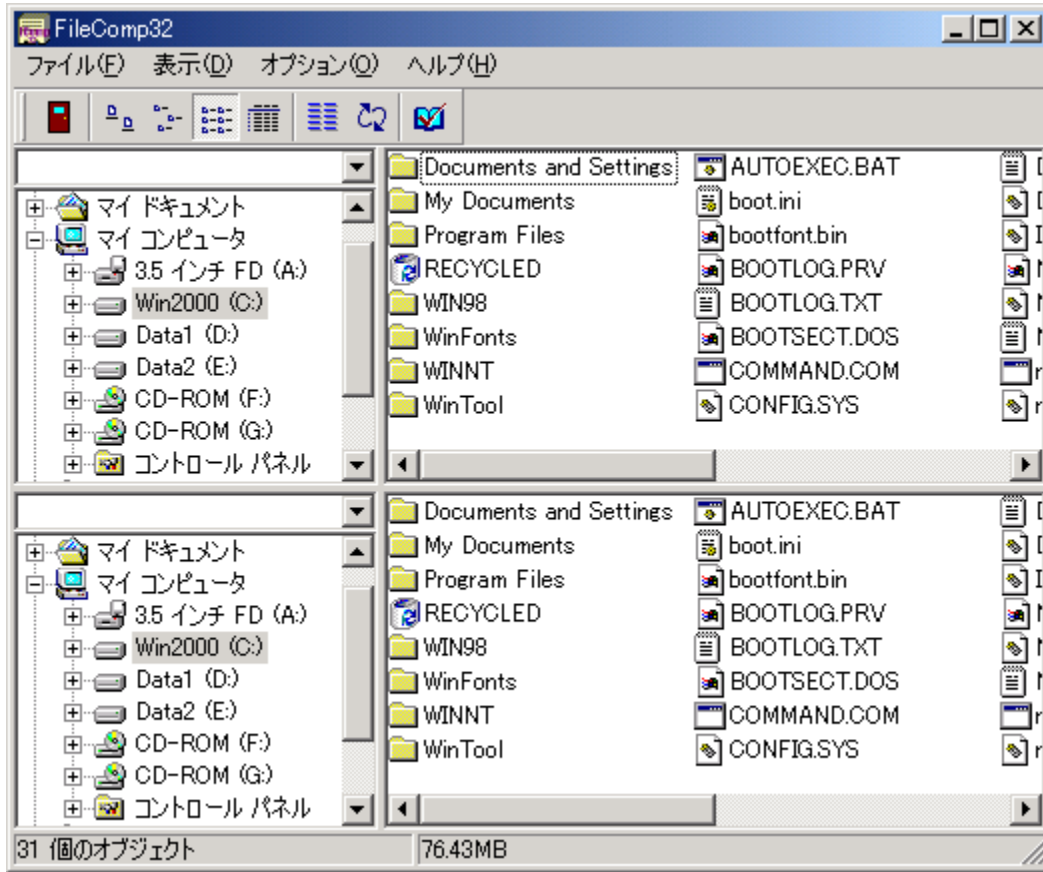
- Ž©[]ìPC/ATĈÉÝŠ·<@ + “ú-{}ĈÉ”ÅWindowsNT 4.0 Workstation SP3[]if[]fCf“ŠJ”ŠÄ«[]j
- Ž©[]ìPC/ATĈÉÝŠ·<@ + “ú-{}ĈÉ”ÅWindows95 OSR2.1
- Ž©[]ìPC/ATĈÉÝŠ·<@ + “ú-{}ĈÉ”ÅWindows98
- Ž©[]ìPC/ATĈÉÝŠ·<@ + “ú-{}ĈÉ”ÅWindows2000RC2

[-•â’«

“ú-{}ĈÉ”ÅWindows2000,í[]ARC2,Á“@[]ìŠm”F,μ,Û,μ,½[]B,ª[]A[]u[]\$ĈÉÀ[]A[]”[]^Ó.È.Ç[]v,É[]’,ç,Ä,ç
,Û,·,ª[]A,ç,,Ä,©,ì[]\$ĈÉÀ,ª, ,è,Û,·[]B

[-%œ-Ê,ì\[-

FileComp32,ì%œ-Ê[-,Â,·B·N"®,μ,Û,·,Æ[A^È%º,ì,æ,α,Èf_cFfA_fO,ª·Ž!,³,ê,Û,·B



4•ªŠ,,³,ê,½~g,ì,α,ì[A]ã%º“ñ,Â,·,Â,ªfyfA,Â,·B[]'α,ªftfHf<f_fŠfXfg[A%ºE'α,ªftf@fCf<fŠfXfg,Â,·B[]ª•”,ðŠî[]€ftfHf<f_[]A%ºº•”,ð'í[]ÚftfHf<f_,Æ,μ,Û,·B

[-Žg-p-û-@

@@Šî€ftfHf<f_æ,è”äŠr,µ,½,çftf@fCf<,đ'í'ð,µ,Ä,,¾,¾,çBŽŸ,ÉA'íUftfHf<f_đ'í'ð,µ,Ä,-,¾,¾,çB'íUftfHf<f_Ä,íftf@fCf<,đ'í'ð,·,é•K—v,í,·,è,Ü,¹,ñi'í'ð,Ä,«,Ü,¹,ñB
@@ufthf@fCf<vffjff...[.l[u”äŠr,v,đ'í'ð,·,é,±,Æ,É,æ,èAftf@fCf<,l”äŠr,đŠJžn,µ,Ü,·B
@”äŠr,·,éftf@fCf<”,²½,çŽž,íC',É,“Ö,¿,,¾,¾,çB

@@uCE<%oÊv_fCfAfO,Å”äŠrCE<%oÊ,đ•Žl,µ,Ü,·B
@f'ffbfN€-U,íA“ú•tAftfCfYA”à—e,Å,·B

@@“ú•t,íAŠî€ftfHf<f_íftf@fCf<,đŠî€
,Æ,µ,ÄA'íUftfHf<f_”à,íftf@fCf<,²V,µ,çACEÄ,çA^ê'v,Æ,µ,Ü,·B,½,¾,µAftf@fCf<fVfXfef€
,²NTFS,íê#ÆFAT16/
FAT32ê#Æ,Å”äŠr,µ,½ê#ACEè,²q,1,Ü,·,ì,ÅA”äŠrCE<%oÊ,²}1•b,Å,·,é,îOSCEè,·,Æ•\
Žl,µ,Ä,ç,Ü,·B

@@ftfCfY,íAŠî€ftfHf<f_íftf@fCf<,đŠî€
,Æ,µ,ÄA'íUftfHf<f_”à,íftf@fCf<,²â,«,çA—,³,çA^ê'v,Æ,µ,Ü,·B

@@“à—e,íA^ê'vA•s^ê'v,Æ,µ,Ü,·B

@@'íUftfHf<f_Éftf@fCf<,²CE©,Ä,©,ç,È,çê#í,íACE©,Ä,©,ç,È,ç,Æ•Žl,µ,Ü,·B

@@Ver.1.15,æ,è”äŠr'íU€-U,đ'í'ð,·,é,±,Æ,²,Ä,«,é,æ,²,É,È,è,Ü,µ,½B[uflfvfVf#“v-
u”äŠr'íUv,íftfufjff...[.Æ,µ,Äu“úŽžvufTfCfYv[u”à—e[v,²,·,è,Ü,·Bf'ffbfN,đ,·,é,Æ”äŠr
'íU,Æ,È,è,Ü,·B

@@,È,“A”äŠr'íU,É,µ,È,©,Á,½€-U,É,Ä,ç,Ä,íA|,đ•Žl,µ,Ü,·B

@@“à—e,ÉH,ç^á,ç,²,·,éê#í,íAftf“fvfŠfXfg,đ•Žl,·,é,±
,Æ,²,Ä,«,Ü,·Bf'fvfŠfXfg,íAftfXfgAŠî€ftf@fCf<,ì16i”•Žl;A'íUftf@fCf<,ì16i”•\
Žl;AŠî€ftf@fCf<,ì10i”•Žl;A'íUftf@fCf<,ì10i”•Žl;AŠî€ftf@fCf<,ìASCII•\
Žl;A'íUftf@fCf<,ìASCII•Žl,đ•Žl,µ,Ü,·B

@@,Ü,½A”äŠrCE<%oÊ,đftf@fCf<,É•U'q,·,é,±,Æ,²,Ä,«,Ü,·B
@•U'qCE`Ž@,í^È%o,í'É,è,Ä,·B
@@@ftf@fCf<-¼,“ú•t”äŠrCE<%oÊ,ftfCfY”äŠrCE<%oÊ,“à—e”äŠrCE<%oÊ
@@Še€-U,đjff“f}i,ij,Ä:æØ,Ä,Ä•U'q,µ,Ü,·B
@@•U'q,íU,ÉA”-¼ftf@fCf<,²qíY,·,éê#íAä,«,·,é,©,Ç,²,©•,ç
,Ä,Ü,·,ì,Åu,í,çv,Ää,«AQu,ç,ç,ív,Ä'Ç%oÄ',«ž,Ý,µ,Ü,·B

@@FileComp32,íCE»fo[fWf#”,Ä,íAŠî€
,Æ'íU,ì'SCEY”äŠr,í,Ä,«,Ü,¹,ñA,»,ìžb'è,Æ,µ,Ü,µ,ÄAQuŠî€ftfHf<f_v,ÆQu'íUftfHf<f_v,đ“ü,é'
Ö,í,é@“\,đVer.1.21,æ,è'Ç%oÄ,µ,Ä,ç,Ü,·B

@@Ver.1.22,æ,èAfgfNfXfvf[[f%o[.È,Ç,©,ç,íftfHf<f_”,íftf@fCf<,ífhf
%ofbfO•fhf[bfv,Ä,»,íftfHf<f_đŠJ,<@“\,đ'Ç%oÄ,µ,Ä,ç,Ü,·B
@ftfHf<f_fŠfXfg,Ö,ífhf[bfv,Æftf@fCf<fŠfXfg,Ö,ífhf[bfv,íAŠJ,ftfHf<f_²^á,ç,Ü,·B
@fhf%ofbfO,·,éftfHf<f_đftfHf<f_fŠfXfg,Éfhf[bfv,µ,½ê#íA,»,íftfHf<f_đŠJ,«,Ü,·B
@,±
,é,É,í,µAftf@fCf<fŠfXfg,Öfhf[bfv,µ,½ê#íA,»,ífhf[bfv,µ,½ftfHf<f_”,íftf@fCf<,đŠÜ,ñ,Ä,ç
,éftfHf<f_đŠJ,«,Ü,·B
@@,±,í•Ö,íAZÄÜ,Éfhf%ofbfO•fhf[bfv,đŽg—p,³,è,è,í,í,©,é,©,ÆŽv,ç,Ü,·B

□@,Ü,½□A"äŠrŽž,ÉŒo%ßŽžŠÔ,ð•\Ž!,·,é,æ,ꝛ,É,μ,Û,μ,½□BŒo%ßŽžŠÔ,ð•\
Ž!,·,é,©"Ū,©,ì□Y'è,í□A□uflfvfVf#f"□v□l□uŠÄ«□Y'è□v,ì□u"äŠr□vf^fu,Å□Y'è,Å,«,Ü,·□B
□@□iVer.1.23,æ,èffftfHf<fg,ÄŒo%ßŽžŠÔ,ð•\Ž!,·,é,æ,ꝛ,É,μ,Û,μ,½□j

□@Ver.1.23,æ,è□AŠî□€,Æ'í□Ū,ì,».,é,¼,ê,É"äŠr,μ,½ftfHf<f_—š—ð,ð•ŪŽ□,Å,«,é,æ,ꝛ
,É,μ,Û,μ,½□B□Å'â10ftfHf<f_•ŪŽ□,·,éŽ-,ª,Å,«,Ü,·□B□Å□V,ì"äŠrftfHf<f_,ª^ê"Ô□ä,É•\Ž!,³,é,Û,·□B

Žg—pđĀ~A—æ,È,Ç

{button ,JI(`,`HID00000007')} Žg—pđĀ

{button ,JI(`,`HID00000008')} šĀÀA''^Ó,È,Ç

{button ,JI(`,`HID00000010')} ~A—æAfTf|f|fgf|fbfg,È,Ç

{button ,JI(`,`HID00000011')} %ü"Å—š—đ

[-Žg—pδCE]

[-FileComp32,ÍftfŠ[f\ftfg,Å,·B

[-FileComp32,ì~iCE ,Í Monja(T.Akama) ,É, ,è,Ü,·B

[-Internet<y,ÑBBS,Ö,ì“]Ú,ÍŽ©—R,É□s,Á,Ä,©,Ü,ç
,Ü,¹,ñ□B,¹/₂,³/₄,μ□A□f□[f]□C□f□u,ÉŠÜ,Ü,è,é,.,x,Ä,Íftf@fCf<,ðfA□[f]□C□f□u,ì,Ü,Ü“]Ú,μ,Ä,-
,³/₄,³,ç□B,» ,ì□Ü,É,í~A—□,í“Á,É•K—v, ,è,Ü,¹,ñ□B

[-EŽGŽ□,Ö,ìCEf□Ú,í□ìŽÒ,ì<-‰oÂ,ðŽæ,Á,Ä,,³/₄,³,ç□B-³f“]Ú,â-³f“ì”,,ð<ÖŽ~'v,μ,Ü,·B

[-FileComp32,íCEÂ□I,ì□Ó“C,É,“,ç,ÄŽg—p,μ,Ä,,³/₄,³,ç□BFileComp32,É,æ,Á,Ä□¶,¶,¹/₂□A,ç
,©,È,é-â'è,àŠJ”ŽÒ,í•‰o,ç,©,È,Ü,·B

[-]§CEÀ[A]""^Ó

□E□^—□%Ō"\,Èftf@fCf<□",Í"◀Úf□f,š,ì<-,·CEÀ,è,À,·□B,½,¾,μ□Aftf@fCf<□",ª"ñ□í,É'½,ç
,Æf`fffbfN,ÉŽžŠŌ,ª,©,©,è,Ü,·,μ□A□"f-□Š,Áf`f"f}fS,μ,Ü,·^∧; ,Á,«,è,í□A1000ftf@fCf<□",,ç,ç
,ì'P^Ê,ÁCEŸ□ō,ª,è,é,±,Æ,ð,`Š©,β,μ,Ü,·□B

□EFAT16/32□ã,ìftf@fCf<,ÆNTFS□ã,ìftf@fCf<,ð"äŠr,ª,¹,½□ê□#□A"ú•t,ª•s^è'v,É,È,é,±,Æ,ª, ,è,Ü,·□
B,±,è,í□A"ú•t,ì•ÛŽ□'P^Ê,ªFAT16/32,ÆNTFS,Æ,Á^Ü,É,é,½,β,É<N,±,Á,Ä,ç,Ü,·□B,±
,ìCE>□Ü,ì'í□ô,Æ,μ,Ü,μ,Á□AVer.1.15,æ,è□}1•b,ìCEë□,ª□o,½□ê□#,í□uOSCEë□v,Æ,μ,Á•\
Ž|,·,é,æ,æ,É,μ,Ü,μ,½□B

□ECE»fo□[fWf#f",Á,í□AWAVftf@fCf<,ÆCD/CD-R□ã,ì%Ō¹Šyff□[f^ (CD-DA),Æ,ì"äŠr,í,Á,«,Ü,¹,ñ□B,ç
,Á,©,ì'í%ž,·,é,©,à,μ,è,Ü,¹,ñ□B□Á<β,ìCD-DA<z,ç□o,μf\
ftfg,í□A,μ,Á,©,è,Æ•â□³,ð,©,·,È,ª,çff□[f^,ð<z,ç□o,μ,Á,ç
,Ü,·,ì,Á□AZ`",Á"»•Ê,Á,«,é,Ü,Ç,Đ,Ç,ç•s^è'v,í,·,«,É,,ç,ÆŽv,ç,Ü,·□B%Ō¹Šyff□[f^,ì"äŠr,í—],è^Ó-
i,ª,É,ç,ñ,¶,á,É,ç,©,È,ÆŽv,Á,Á,ç,Ü,·□B1bit,·,è,Á,à□ISŌ,ìŽ`",Á,í"»•Ê•s%Ō"\,Á,·,É□B

□EfffXfNfgfbfv,â,²,Ý" ,È,Ç,ì%Ō¼'zftfHf<f_,ð'ì'ð,μ,Á,ì"äŠr,í,Á,«,Ü,¹,ñ□BftfHf<f_,Á,í,È,,»),ì
%Ō²,ìftf@fCf<,ð'ì'ð,μ,Á"äŠr,μ,Á,,¾,¾,ç□B,ç,·,è,ì'í%ž,·,é—\è,Á,·,ª□AZžŠú,í-ç'è,Á,·□B

□EFileComp32,ÍŠí□€ftf@fCf<y,Ñ'í□Ûftf@fCf<,É,í^è□Ø□',«□ž,Ý,ð□s,Á,Ä,ç
,Ü,¹,ñ□B^À□S,μ,Á,,Žg,ç,,¾,¾,ç□B

□EfffofbfO,í□s,Á,Ä,ç,Ü,·,ª□AŠÁ<<»,ì'¼,ì□ðCE□,É,æ,è□A,±,¿,ç,Á,í"CE©,Á,«,È,ç□ê□#,ª, ,è,Ü,·□B,à,
μ□A•s"s□#""CE©,ª,è,Ü,μ,½,ç□□[f<,È,Ç,Á,²"A—□,ç,½,¾,¾,è,í□K,ç,Á,·□B

[-OS•Ê]§CEÀ[A]s"s□#î•ñ

□□indows98/Windows2000□ã,Á,ì•s"s□#
□E"ÁŽêftfHf<f_(My Documents),È,Ç,ì"äŠr,ª,Á,«,È,ç□B

□@,±,ì□ê□#□Aflfbfgf□□[fNCEo—R,Á"äŠr,·,é,Æ□³□í,É"®□ì,·,é,Æ,ì•ñ□□,ð',·,ç,Ä,·,è,Ü,·□B

□□'SOS,Á,ì•s"s□#
□EfffXfNfgfbfv,â,²,Ý" ,Á,ì"äŠr,ª,Á,«,Ü,¹,ñ□B

[-2000"N-â'è'í%ž,É,Á,ç,Ä

FileComp32,Í2000"N^È□~,à□³□í,É"®□ì,·,éŽ-,ðŠm"F,μ,Á,ç,Ü,·□B
,½,¾,μ□A"ú•t,ìŽæ"¾,È,ÇOS,É^È'¶,μ,Á,ç,é•"ª,í•Û□Ø'í□ÛŠŌ,Æ,È,è,Ü,·□B
,±,ì•"ª,í□AOS,ª'í%ž,ª,ì,μ,Á,ç,è,í-â'è,È,ç,Á,μ,â,æ□B
□Ú□×,í□AŠ]`ŽŌfz□[f€fy□[fw,É□u2000"N-â'è'í%ž,É,Á,ç,Ä□v,ðCEöŠ],μ,Á,ç,Ü,·,ì,Á,»,¿,ç,ð,²—,-
,¾,¾,ç□B

~ A—æ AfTf| [fgflfbfg, È, Ç

—v—J AfofOfCEf| [fg“™, ìTf| [fg, íŽ,, ^¶, Éf [f<, Å, “Šè, ç, µ, Ü, ·B
f [fCf“, ìTf| [fg èŠ, í ŽÓfz [f€fy [fW, Å, ·B

E-mail monja@users.to
NIFTY-Serve JCD00265
fTf| [fgfy [fWURL <http://monja.users.to/filecomp/>

fofOfCEf| [fg, ð‘—•t’ , , , éêê‡, íA Çó, o, Ü, µ, ½ŠÂ««, ð, “<³, !, , ¾, ³, çB
OS, ÌŽí—
p, Æfo [fWf‡f“ A“ <úf [f, fŠfTfCfY A” äŠrCE³, Æ” äŠræ, ì, » , ê, ¼, ê, ìfffBfA” } ‘ì(HDD, ÆCD-R, È, Ç)
fGf% [, , ð, ¾, ê, ½ê‡, íA, » , Ì“à—e, à‘—•t’ , , , é, Æ” ñí, É•, ©, è, Ü, ·B

^ êŽŸ” z•z æ

ì ŽÓfz [f€fy [fW <http://monja.users.to/filecomp/>
Vector <http://www.vector.co.jp/>

É, ðfNfSfbfN, ·, é, Æ'€ñì, à, Å, «, Ä, µ, Ü, Á, Ä, ç, ½, ì, ð□A, Å, «, É, ç, æ, x, É, ·ì□X, µ, ½□B
□Eftf@fCf<fTfCfY, à^Ù, É, Ä, Ä, ç, Ä, àf□[fX'x, ì□Å□lfAfhfçfX, Ü, Å"à—e, à^è'v, µ, Ä, ç,
½, ç□u^è'v□v, Æ•\Zì, µ, Ä, ç, ½, ì, ð□u•s^è'v□v, Æ•\Zì, ·, é, æ, x, É, µ, ½□B
□E"à—e•s^è'v, ìf"fv•\Zì, ÌŽž□A"~êfAfhfçfX, Å•Ð•ù, ìftf@fCf<, Éf□[f^, à, É, ç□è□#, ì□A00, ð•\
Zì, ·, é, æ, x, É, µ, ½□B
□EflfvfVf#f", É, Ç, ì□ó'Ô, ðfçfWfXfgfŠ, É•Ù'¶, ·, é, æ, x, É, µ, ½□B

Version 1.15 [1999/03/13]

□E"äSr'ì□ü□i"ú•t□AftfCfY□A"à—e□j, ð, », è, ¼, è'l'ð, Å, «, é, æ, x, É, µ, ½□B
□E"äSrç<%oÉ•\Zìf_fCfA□fO, ÅŠe□€—Ü, ðf□[fg, Å, «, é, æ, x, É, µ, ½□B
□Eftf@fCf<fvfXfefç, àNTFS, ÆFAT/
FAT32, Æ, Å"äSr, µ, ½□è□#□A"ú•t, ì□, "x, à^Ù, É, é, ½, ß□A"äSrç<%oÉ, à□}1•b, ÌŽž, Ì, Ý□uOSçÈè□□v,
Æ, µ, Ä•\Zì, ·, é, æ, x, É, µ, ½□B
□E□f□f□f...□[□\□~ , ð^è"•ì□X, µ, ½□B
□E□u•\Zì□v□u•s^è'vftf@fCf<, Ì, Ý□v, ìf`ffbfN, ðŠO, µ, Ä, à, ·, x, Ä, ìftf@fCf<, ð•\
Zì, µ, É, ©, Ä, ½, ì, ð□C□³, µ, ½□B

Version 1.14.1[1998/12/05]

□EŠì□€□A"ì□ü, Ì, », è, ¼, è, ìftfHf<f_fŠfXfg, ìftfCfY•ì□X, Å□A□¶'l, Ü, Å□s, çftfHf<f_fŠfXfg, à•\Zì, ³, è, Ä, ç,
É, ç□ó'Ô, Å□AFileComp32Ž©'l, ìftfCfY, ð•ì□X, ·, é, Æ□AftfHf<f_fŠfXfg, à•\Zì, Å, «, É, -
, É, é, Ì, ð□C□³, µ, ½□B
□E"äSr, ð'tŽ~ , µ, ½Žž, É•s^è'vftf@fCf<, à, , é□è□#□A"äSrç<%oÉ, ð•\Zì, Å, «, é, æ, x, É, µ, ½□B, ±
, ì□è□#□A"äSrç<%oÉ, ð•\Zì, ·, é, ©"Ù, ©, ð-à, ç□#, Ì, ¹, é, æ, x, É, µ, ½□B
□Efc□[f•fo□[, ðFileComp32, ì□ä"• , É, Ì, Ý, ÉfhfbfLf"fo, Å, «, é, æ, x, É•ì□X, µ, ½□B

Version 1.14 [1998/12/01]

□EVer.1.13, Å, Ì"äSr'—x(ŽÄ□Ü, É, ìftf@fCf<çYö), àŽÄŠ', Å, «, é, Ù, Ç'x, ç, ½, ß□A□f□f, fŠ, ÌŠm•Ù•ù-
@, ð•ì□X, µ, Ä'È'O, ìfo□[fWf#f", Æ, Ü, Ú"~ , ¶"ö"x, Ì'—x, É, à, Ç, µ, ½□iŽg—pf□f, fŠ, à□Ä□~çÈÀ, É—}
, Ì, Ä, ç, Ü, ·□□B
□E"äSrç<%oÉ•\Zìf_fCfA□fO, ð•Ä, ¶, é□Ü, É, ·, ², ŽžŠÖ, à, ©, ©, Ä, Ä, ç, ½, ì, ð□C□³, µ, ½□B

Version 1.13 [1998/11/30]

□E•N" @Žž, É'½—É, ìf□f, fŠ, ð"Á"i, µ, Ä, ç, ½, ì, ð□A□f□f, fŠ, ÌŠÇ—□•ù-@, ð•ì, Ì, Ä•K—
v, Éf□f, fŠ, µ, ©Žg, Ì, É, ç, æ, x, É, µ, ½□B
□@•ì□X, Ìç<%oÉ□AçY□ðfXfs□[fh, à□, µ—
Ž, ž, Ü, µ, ½□B, », Ì'ä, Ì, è□AçY□ð'ì□Ü, Æ, É, éftf@fCf<□", ì□äçÈÀ, à, É, -
, É, è, Ü, µ, ½□B□i, ½, ¾, µ□A" <□Úf□f, fŠ—e—É, É^É'¶, µ, Ü, ·□□B

Version 1.12 [1998/11/21]

□Efrf"fpfCf%o, ðDelphi 4.0j Pro., É•ì□X, µ, ½□B
□E"äSr'ì□úftf@fCf<□", ð20—œftf@fCf<, Ü, Á'ì%ož, ³, ¹, ½□i, ½, ¾, µ□A" <□Úf□f, fŠ—e—
É, É^É'¶, µ, Ü, ·□□B
□E•s^è'vç<%oÉ, ð•Ù'¶, ·, é□Ü, É□AftfHf<fgftf@fCf<-¼, Æ, µ, Ä result.csv , ðŽw'è, ·, é, æ, x,
É, µ, ½□B
□E•s^è'vç<%oÉftf@fCf<, Å□AŠì□€ftfHf<f_ -¼, Æ, », Ì%o², ìftfHf<f_ -¼—", ìftf@fCf<-¼, Æ, ÌŠÖ, É□u\
□v, à"², ~ , Ä, ç, ½, Ì, ð□C□³, µ, ½□B

Version 1.11 [1998/07/26]

□E"äSrŠJŽn, Ü, Å, É, µ, Ì, ç, f"ff}fŠ, µ, Ä, ç, ½, ì, ð□C□³, µ, ½□B
□Eftf@fCf<, àŽg—p't, ÌŽž, É□A/OfGf%o□[, Å'äŽ~ , µ, Ä, ç, ½, ì, ð□uŽg—
p't□v, Æ, µ, Ä"äSr, ð'±□s, ·, é, æ, x, É, µ, ½□B
□E"äSr, µ, Ä, ç, éftf@fCf<-¼, à', ç, Æ•\Zì, µ, «, è, Ä, ç, É, ç, Ì, ð□A□u...□v, Å□È—à•\Zì, µ□A'S'ì, ð•\
Zì, ·, é, æ, x, É, µ, ½□B

Version 1.1 [1998/07/24]

□E"äŠrfAf<fSfŠfYf€„đ'á•□„É•İ□X„μ„½□B
□E"äŠrCE<%oÉ„á•s^ê'v„İftf@fCf<„İ„Ÿ•\Ž!„„é„æ„x„É„μ„½□B
□E'İ'đ„μ„Ä„ç„éftfHf<f_„đftfHf<f_—“„É•\Ž!„„é„æ„x„É„μ„½□İ„Ü„Ä„İ□Aftf@fCf<-¼—“„É•\Ž!□İ□B
□E“ú-ƒCEë”ÄWindows 98„É□³Ž®„É'İ%ž„μ„½□B
□E"äŠr'İ□Ÿftf@fCf<□„đ10000ftf@fCf<„Ü„Ä'İ%ž„³„¹„½□İ„½„¾„μ□A“<□Ÿf□f„fŠ—e—
É„É^É'Ÿ„μ„Ü„„□□B
□Efwf<fvftf@fCf<„áCEÄ„©„Á„½„İ„đ□C□³„μ„½□B

Version 1.01 [1998/04/14]

□Efwf<fvftf@fCf<„đ□İ□¬„μ„½□B
□EWindows98fÄ(RC-0)„Ä□AftfHf<f_„à„İftf@fCf<„đ“äŠr„μ„È„©„Á„½„½„ß□AftfHf<f_„İŽ~•É•û-
@„đ•İ□X„μ„½□B

Version 1.00 [1998/04/13]

□E^ê%ž„İ□³Ž®”ÄfŠfŠ□[fX□B
□E"äŠrCE<%oÉ„đftf@fCf<„É•Ÿ'Ÿ„Ä„«„é„æ„x„É„μ„½□B
□@•Ÿ'ŸCE`Ž®□Fftf@fCf<-¼„“ú•t„fTfCfY„“à—e
□@□İ„Še□€—Ÿ„đfjff“f”(,)„Ä<æ□Ø„Ä„Ä„Ÿ„„á□A•ŸŽš—ñ„İf_fuf<fNfH□[fe□[fvf†f“(”)„Ä„İ<æ□Ø„Ä„Ä„ç
„Ÿ„¹„ñ□B„±„ı„ç„İ•ú„áCE©„â„„ç„Ä„μ„á„x□B
□E"äŠrftf@fCf<□„á3000^É□ä„„é„Æf□f„fŠ•s^«„đ<N„±„μ„Ä^ê”É•ŸCEİfGf%□□[„á„Ä„Ä„ç
„½„İ„đ□C□³„μ„½□B
□EŠİ□€ftf@fCf<fŠfXfg„ÄftfHf<f_„đ'İ'đ„μ„½□Ÿ„İ„fXfe□[f^fXfo□[„İ„fTfCfY•\Ž!„á0fofCfG„É„È„Ä„Ä„ç
„½„İ„đ•\Ž!„μ„È„ç„æ„x„É„μ„½□B
□EŠİ□€ftf@fCf<fŠfXfg„Ä□u„„x„Ä'İ'đ□v„đ'İ'đ„μ„½Žž„ÉfXfe□[f^fXfo□[„İ„fTfCfY„á□#CEv„đ•\Ž!„μ„Ä„ç
„È„©„Á„½„İ„đ□C□³„μ„½□B

Version 1.00fÄ6 [1997/10/19]

□Eftf@fCf<“äŠrCEä□A•s^ê'vftf@fCf<„İftf@fCf<f_„fv•\Ž!Žž„ÉŠK'w%»ftfHf<f_^È
%o„İftf@fCf<„đ'İ'đ„„é„ÆI/OfGf%□□[„á□o„Ä„ç„½„İ„đ□C□³„μ„½□B
□Eftf@fCf<CEŸ□đŽž„É□İ□s□ó<μ„đ•\„f_fCfAf□fO„đ•\Ž!„„é„æ„x„É„μ„½□B
□Eftf@fCf<“äŠrŽž„É□A“äŠr„„éftf@fCf<□“□A“äŠr„μ„½ftf@fCf<□“□A•s^ê'vftf@fCf<□“„đ„»„é„¼„é•\
Ž!„„é„æ„x„É„μ„½□B
□E"äŠrCE<%oÉ„İ•\Žİf_fCfAf□fO„Ä□A“äŠr„μ„½ftf@fCf<□“□A•s^ê'vftf@fCf<□“„đ•\Ž!„„é„æ„x
„É„μ„½□B
□EŠİ□€<y„Ÿ'İ□ŸftfHf<f_„İ□u□Ÿ□×□v„İ□€-
Ÿ„İ•□„đ•Ÿ'Ÿ„„éžž□A□u□Ÿ□×□v^ÉŠO„İ□ó'Ó„¾„Æ•□„á0„É„È„Ä„Ä„ç„½„İ„đ□C□³„μ„½□B

Version 1.00fÄ5 [1997/10/12]

□E'O%ñ□C□³„μ„½□A“äŠrCE<%oÉ„İ□€-Ÿ-¼„İ„x„ı□AftfHf<f_“äŠr„İ•\Ž!„á¼„Ä„Ä„ç
„È„©„Á„½„İ„đ□C□³„μ„½□B
□E□u„„x„Ä'İ'đ□v„İ□fjff...□[„Æf□[f<fAfCfRf“„đ'Ç%oÄ„μ„½□B
□E□u“äŠr□v„İ□f□[f<fAfCfRf“„đ„â„Ä„Æ□İ□¬„μ„½^<^<;
□E'İ'đftf@fCf<fTfCfY^t„İ□İ□s□ó<μ„İfp□[fZf“fe□[fW„đ•\Ž!„„é„æ„x„É„μ„½□B
□Eftf@fCf<f□fjff...□[„É□u“äŠr□v□€-Ÿ„đ'Ç%oÄ„μ„½□B

Version 1.00fÄ4 [1997/09/07]

□E"äŠrCE<%oÉ„á•s^ê'v„İftf@fCf<„İ“äŠrCE<%oÉ„đ•\Ž!„Ä„«„é„æ„x„É„μ„½□B
□@□İfAfhfCEfX„Æ16□İ□A10□İ□AASCII•ŸŽš„đ„»„é„¼„é•\Ž!□İ
□Efc□[f<fo□□[fXfe□[f^fXfo□[„İ•\Ž!□^“ñ•\Ž!„đ'İ'đ„Ä„«„é„æ„x„É„μ„½□B
□EfcfWfXfgfŠ„Éftf@fCf<f_„İ□[•“á„Ä□u□Ÿ□×□v„İ□€-ŸftfCfY□AftfHf“fg-
¼□AftfHf“fgfTfCfY□A“wCEİ□F„É„Ç„đ•Ÿ'Ÿ„„é„æ„x„É„μ„½□B
□@□İ„½„¾„μ□ACE»□Y„İftfHf“fg-¼„É„Ç„İ•İ□X„Ä„«„Ÿ„¹„ñ^<^<□İ
□E"äŠrCE<%oÉ„İ□€-Ÿ-¼„áŠÓ^á„Ä„Ä„ç„½„İ„đ□C□³„μ„½□B
□EftfCfY„İ'á„«„çftf@fCf<„İžž□A“äŠr^t„İ□İ□s□ó<μ„đ•\„fo□[„İ“@□İ„á„„©„μ„©„Á„½„İ„đ□C□³„μ„½□B
□E"äŠrŽž„İftf@fCf<„đ“Ç„Ÿ□ž„ß„½„İ„fobbf†f@„İftfCfY„đ8KB„©„ç32KB„É•İ□X„μ„½□B□İ-

ñ70MB,ìftf@fCf<"äŠr,ª-ñ1•b,Ù,Ç'¬,,È,Á,½□

Version 1.00fÀ3 [1997/08/27]

□EDelphi 2 -> Delphi 3,ÉfRf"fpfCf%o,ð•ï□X□B
□Eftf@fCf<frf...□[,Á□Ú□×•\Ž!,ÌŽž,Í□A^ê□s'P^Ê,Á'I'ð,Á,«,é,æ,æ,É,µ,½□B
□E"äŠrÆ<%oÊ,ì\Ž!,ì□Ú□A^ê□s'P^Ê,Á'I'ð,Á,«,é,æ,æ,É,µ,½□B
□E'í□Ú□æ,ìftf@fCf<frf...□[,Á□A,ç,Ü,Ü,Á•;□"I'ð,Á,«,Á,ç,½,ì,ð,Á,«,È,ç,æ,æ,É,µ,½□B
□E'I'ðftf@fCf<,ªfŠ□[fhfJf"fŠ□[' @ □«,È,È,Á,Á,ç,é,Æ□Aftf@fCf<,ªŠJ,¬,,ÉfGf%o□[,È,È,Á,Ä,ç
,½,ì,ð□C³,µ,½□B

Version 1.00fÀ2 [1997/06/24]

□E"äŠrŽž,É□m'tŽ~□nf{f^f",ð'Ç%oÁ,µ□A"äŠr't,Á,à'tŽ~,Á,«,é,æ,æ,É,µ,½□B
□EfXfe□[f^fXfo□[,É'I'ðftf@fCf<□"□A'I'ðftf@fCf<,ìftf@fCf<fTfCfY,ì□±Ev'l,ð□o,·,æ,æ,É,µ,½□B
□E,»,ì'¼□A□"•ï□X□B

Version 1.00fÀ1 [1997/06/01]

□E—F□[,©,ç^Ê—Š,³,ê,Ä-ñ"¼"N□A,â,Á,Æ,±,³Žè,ð•t,¬,ÄfÀ1,ðfŠfŠ□[fX^ ^;□B

^È□ã

