

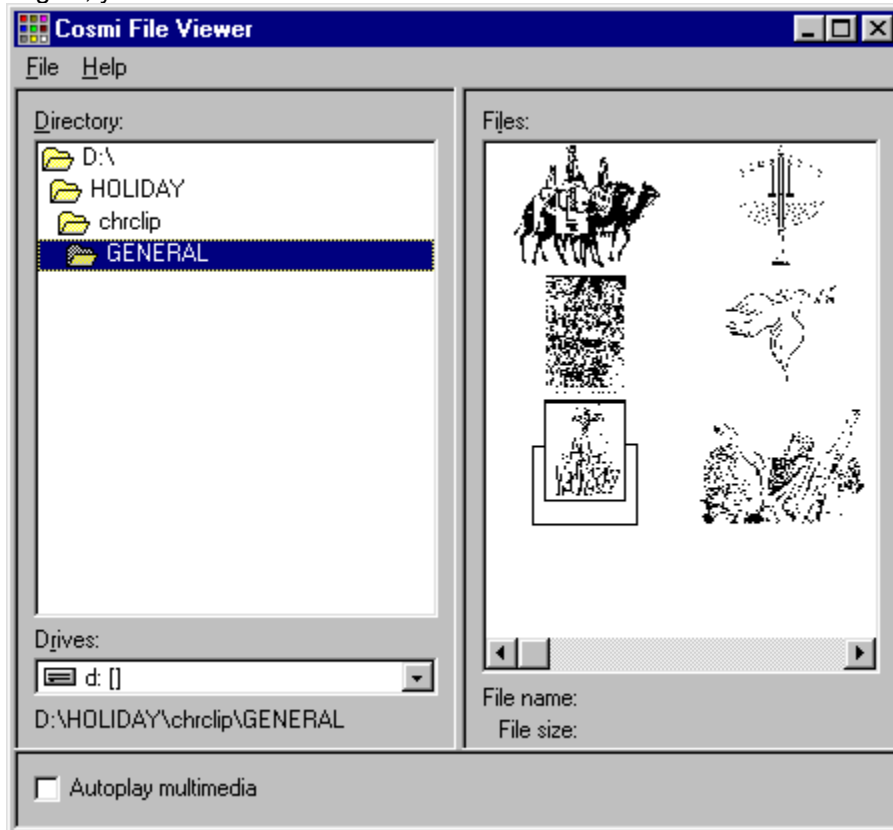
# Contents

**Viewer Help**

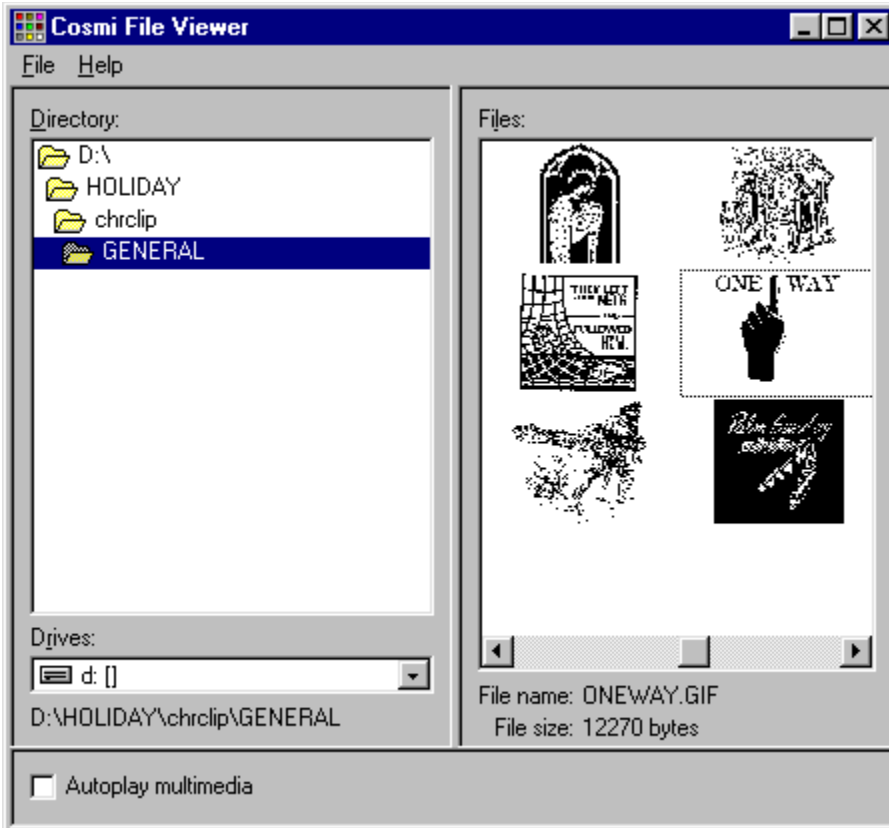
**Menu screen**

## Menu screen

The Cosmi Clip Art viewer is a simple to use utility to view small collections of clip art. After the program begins, you will see a main menu as follows:



Change directories to the one of your choice. The program will then make thumbnail images of the original art. You should notice that there is a slider on the right hand panel (the one with the images). Move this to the left or right to move forward or backward. These are NOT in high resolution. If you wish to view a file, rest your cursor over the file, and you will then be able to see the name and file size on the bottom of the right hand half of the main menu.



To export the file to the windows clipboard, while the cursor is over a file (also indicated by a box with dotted lines) click on **File**, save to clipboard. You may then paste the picture into your favorite programs. For information on pasting, see the help file for the program you are using. Normally pressing **CONTROL** and **V** at the same time inserts the clipboard's contents where your cursor is pointing. If you double click on an image it will be opened in the application associated with that file extension. For more information on associating items with applications, see your Windows manual. If you check "Autoplay multimedia" the program will play any sound, video or other items encountered as the file is displayed.

