

Using RightOn



RightOn is a Windows utility which allows you to program the right button of your mouse to send virtually any keystroke to the window the mouse is in. You might set up the right button to send the Return key, to dialog boxes which appear on the screen.

[Running RightOn](#)

[Setup](#)

[Exclude](#)

[About](#)

[System Requirements](#)

[Motivation](#)

Running RightOn

RightOn can be launched several ways.

1. In FileManager, go to the directory where RightOn has been installed (for example, c:\righton) and double click the left mouse button on the file "righton.exe."
2. In Program Manager, select Run from the File menu. A dialog box will appear; type in the directory where RightOn was installed and righton.exe.
3. Create a program item in the Startup Group of the Program Manager. This way, RightOn will automatically be loaded when Windows starts. **This is the recommended solution.**

When RightOn is running, it appears as an icon at the bottom of the screen. RightOn cannot be restored from its iconic state, nor can it be maximized.

[Setup](#)

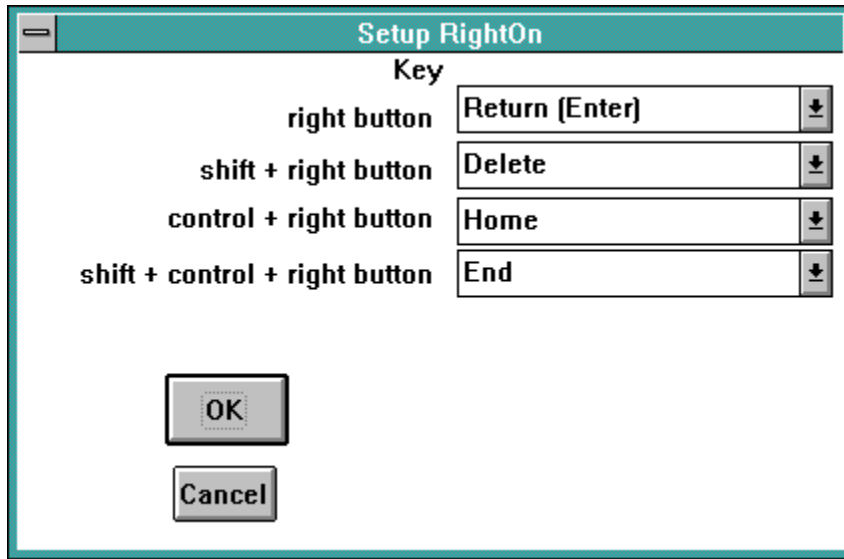
[Return to main index.](#)

Setup

The [Setup](#) dialog box is accessed from the System menu.

The Setup dialog box is where you can tell RightOn which keys you want it to send to the target window when the right mouse button is clicked.

Click the mouse on the picture of the dialog box below for more information on the various parts of the Setup dialog box.



[Exclude](#)

[Return to main index.](#)

Configuring RightOn

These four combo boxes are where you tell RightOn what keystroke you want it to send when the right mouse button is pressed and released, with other keystrokes sent for varying combinations of right mouse button and the Shift and Control keys.

OK Button

The OK button signifies that everything in the dialog box is to your liking, and you want RightOn to continue with the configuration selected. If you exit the program after selecting OK, then the configuration will get saved and recalled the next time that RightOn is run.

Cancel Button

The Cancel button tells RightOn to disregard any changes made during the time the dialog box was displayed.

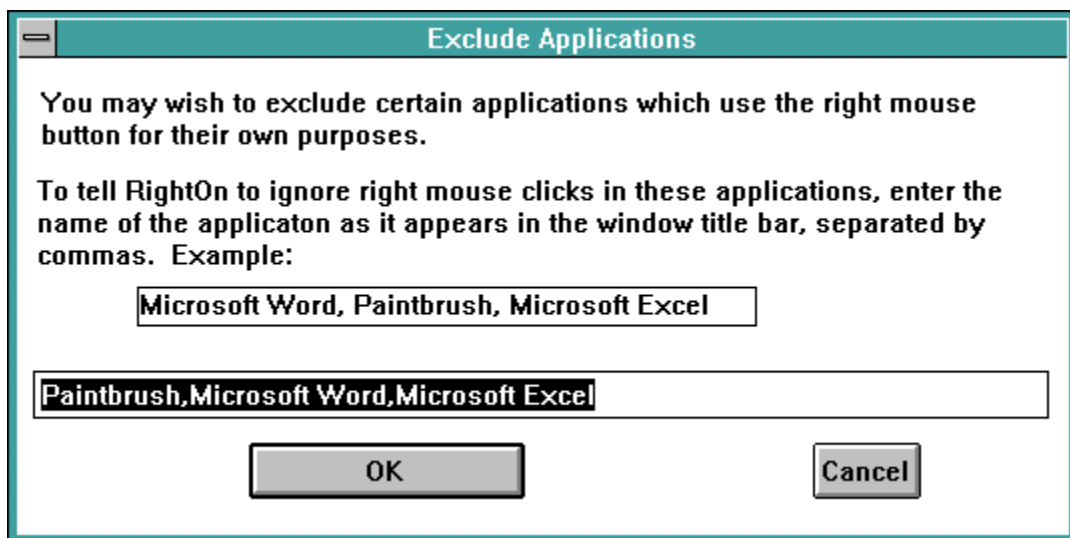
Exclude

It is not always desired to have RightOn sending keystrokes to applications which themselves use the right mouse button. For example, the Paintbrush application which comes with Windows uses the right mouse button to select background colors. Some word processors and spreadsheet programs use the right mouse button to pop up a menu.

In general, it is not desirable to program RightOn to send a keystroke to the program, when the program itself is looking for a right mouse button click. In some cases this conflict can lead to a program or system crash.

To tell RightOn not to send the programmed keystrokes to a particular application, bring up the [Exclude](#) dialog box by selecting Exclude... menu item from the System menu. In the edit box, enter the name of applications, as they appear in the title bar of the window, separated by commas.

Click the mouse on various items in the dialog box below for more specific information on each of the elements.



[About](#)

[Return to main index.](#)

Exclude Applications textbox

This textbox is where you specify which applications you want RightOn to *leave alone!* It is important to make sure that the applications are spelled the same as they appear in the title bar of the application.

When specifying more than one application separated by commas, make sure that there are no extra spaces on either side of the comma! Extra spaces can confuse RightOn - you might think you are excluding an application when in fact you are not, and if the application is processing

About

Selecting About... from the system menu brings up the [About](#) dialog box, with the usual icon, OK button, and whom to give the credit (or blame!).

RightOn was developed using Borland C++ 3.1.

If you have any comments, problems (related to the program only, please!), and most important, *any suggestions for improvement*, please contact the author! Three methods of contact are listed below.

[U.S. Mail](#)

[Ma Bell](#)

[Internet](#)

Steve McCarthy

[System Requirements](#)

[Return to main index.](#)

U.S. Mail



Steve McCarthy
6707 39th SW
Seattle, WA 98136 USA

Ma Bell

Steve McCarthy
(206) 932-3351



Internet



Steve McCarthy
sjm2458@bcstec.ca.boeing.com

System Requirements

Simple. You gotta have Windows 3.1 or better.

That's it.

Windows 3.0? No.

Any questions?

Good!

Seriously, Windows 3.1 or later is required because there are calls to Windows functions which did not exist in versions of Windows prior to 3.1.

[Motivation](#)

[Return to main index.](#)

Motivation

There was a great shareware program called "Whiskers" which does this same kind of thing. I found it in the disks accompanying Brian Livingston's book *Windows 3.1 Secrets*, and liked it so much that I sent in the \$15 registration fee. After waiting what seemed an eternity, I got a call from them explaining that the company had been bought out, and would I like to purchase the new, upgraded, price-tripled version of Whiskers for \$45?

I explained that I just wanted the shareware version I was attempting to register, and could they just register me for the older, and far less expensive, version? "No dice," they said. "Send my check back." Right then I vowed that my goal in life would be to provide this great functionality at a reasonable price.

Who says **necessity** is the mother of all invention? I say **spite** ranks right up there!

[Return to main index.](#)

