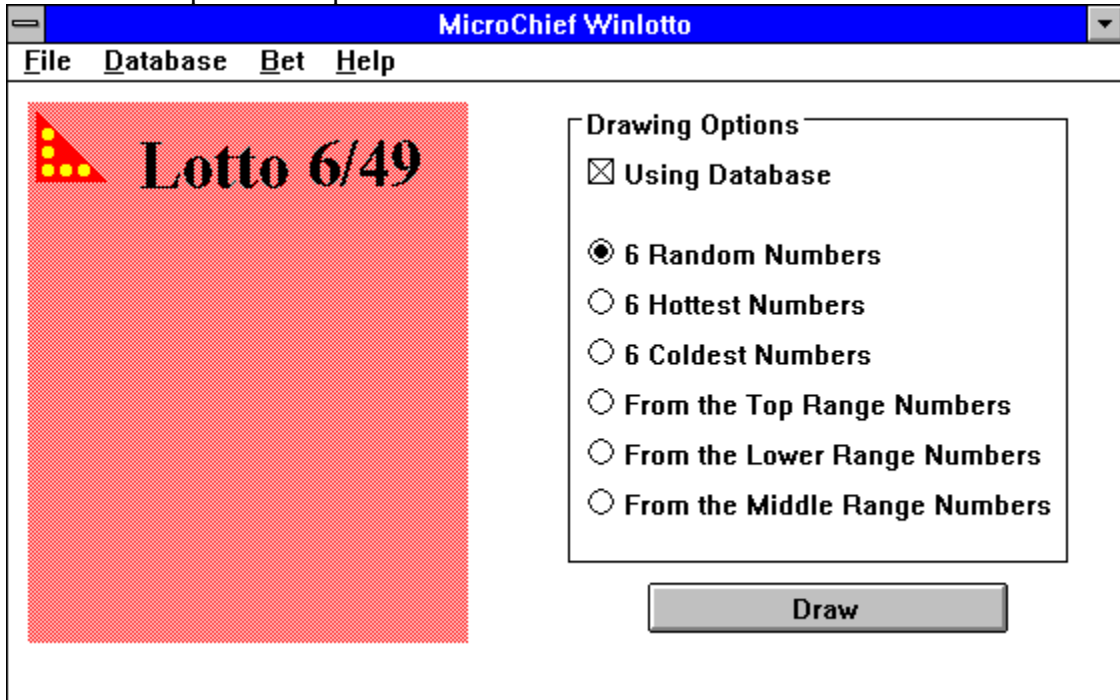




MicroChief WinLotto Help Contents

Click on each part for help.



Drawing Options

Using Database

6 Random Numbers

6 Hottest Numbers

6 Coldest Numbers

From the Top Range Numbers

From the Lower Range Numbers

From the Middle Range Numbers

Using Database

This option enable you to use the database while selecting numbers. If this option is checked, all drawing methods are enabled, otherwise, only the "6 Random Numbers" method is enabled.

6 Random Numbers

This option lets you select 6 random numbers for the current lottery(6/39, 6/45, or 6/49).

6 Hottest numbers

This option displays the 6 numbers which have the most occurrences in the database for the current lottery.

6 Coldest numbers

This option displays the 6 numbers which have the least occurrences in the database for the current lottery.

From the Top Range Numbers

If this option is selected, 6 random numbers are picked from those numbers whose occurrence percentage lies in the top 30% range.

From the Low Range Numbers

If this option is selected, 6 random numbers are picked from those numbers whose occurrence percentage lies in the bottom 30% range.

From the Middle Range Numbers

If this option is selected, 6 random numbers are picked from those numbers whose occurrence percentage lies in the middle 31% to 69% range.

**This is the image of the "Drawing Options" section,
see the following sections for details.**

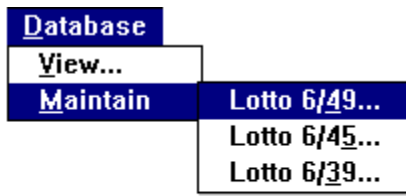
The File menu

Click on each item to see details.

<u>F</u> ile	<u>D</u> ataba:
✓	Lotto 6/49
	Lotto 6/45
	Lotto 6/39
	Exit

The Database menu

Click on each item to see details.



Switch to 6/49. You will see the ticket title switches to



Switch to 6/45. You will see the ticket title switches to



Switch to 6/39. You will see the ticket title switches to



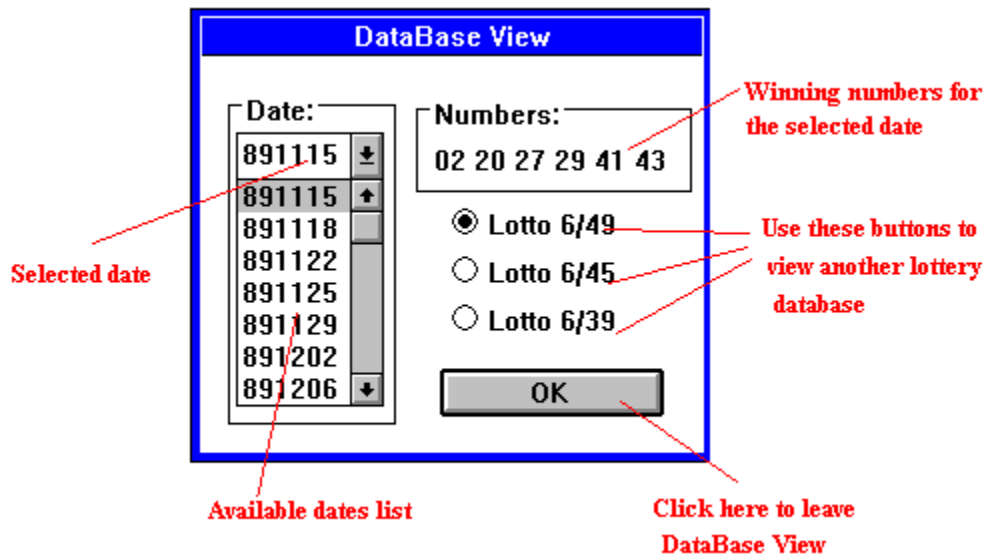
Exit the program form here!

The Bet menu

Select the amount of money you want to bet.

Bet
✓ \$1
\$2
\$3
\$4
\$5
\$6
\$7
\$8
\$9
\$10

The Database View DialogBox



The Database Maintain DialogBox

The image shows a dialog box titled "DataBase Maintain" with a blue border. It contains several input fields and buttons, with red arrows pointing to them and red text labels explaining their function.

- Selected date:** A date field containing "891115" with a dropdown arrow.
- Date to be added/deleted:** A "Modified Values" section with a "Date:" field containing "89", "11", and "15" (YY MM DD).
- Numbers to be added/deleted:** A "Numbers:" field containing "02", "20", "27", "29", "41", and "43".
- Actions:** A section with two radio buttons: "Add" (unselected) and "Delete" (selected).
- Buttons:** "Perform Deletion", "Add to Data Base", and "OK".

Red annotations include:

- "Selected date" pointing to the date field.
- "Date to be added/deleted" pointing to the date field in the Modified Values section.
- "Numbers to be added/deleted" pointing to the numbers field.
- "Button for adding new numbers" pointing to the "Add" radio button.
- "Button for deletion" pointing to the "Delete" radio button.
- "Click this button to perform deletion" pointing to the "Perform Deletion" button.
- "Click this button to add the new entry" pointing to the "Add to Data Base" button.
- "Click here to quit" pointing to the "OK" button.

The Help Menu

Bring up this file or the copyright notice.

Winning numbers are displayed on the ticket.

Press this button to generate winning numbers!

