

Help for Ini-File Editor

The Index lists the Help Topics available for Ini-File Editor. Use the scroll bar to see entries not currently visible in the Help window. You may want to set the display of this help screen to full-screen to see some of the topics without scrolling left-and-right (you may still have to scroll). In that case, click on the up-arrow in the very top right corner.

To learn how to use Help, press F1 or choose Help To Use Help from the Help menu.

[About Ini-File Editor](#)

Menu Selections:

[File Menu](#)

[Windows Version](#)

[Help Menu](#)

Main Screen:

[Current INI ListBox](#)

[Base INI ListBox](#)

[INI File Selection](#)

[Status Bar](#)

[Drag-&-Drop](#)

[Tool Bar](#)

[Exit Tool](#)

[Save Tool](#)

[Search Tool](#)

[Information Tool](#)

[Copy Tool](#)

[Add Tool](#)

[Edit Tool](#)

[Delete Tool](#)

Necessary Files:

[Files Needed to Run the Program](#)

Problems

[Program Won't Load](#)

About Ini-File Editor

The WIN.INI and SYSTEM.INI files are some of the most problematic files to manage in Windows. Every Windows program seems to want to modify them. They are also subject to corruption, particularly in Windows 3.1. And it is far from clear *how* to edit these files. While there are manuals and books available, they never seem to be available when you need them.

INI-File Editor allows you to have a side-by-side look at your WIN or SYSTEM.INI and a default example file. You can copy Keywords or entire Sections from the example file to your *real* INI. You can, of course, edit any of the Keywords, and you have an Information button to press to tell you enough about that Keyword to determine how to edit it. You can also add Section or Keywords.

The INI File Editor is also sizeable. When you use your mouse to size the form, the various list boxes, buttons, and labels will adjust themselves on the form to accommodate the new size.

The INI-File Editor allows you to do the following tasks:

- (1) Edit any part of your current SYSTEM.INI or WIN.INI file. (see Edit Tool)
- (2) Compare your current SYSTEM or WIN.INI file to a standard file for either Windows 3.0 and 3.1.
- (3) Copy from the standard *.INI files, including Drag-&-Drop (see Copy Tool).
- (4) Automatically saves up to 99 old copies of your *.INI files while editing (*.X00 to *.X99).
- (5) Look up information on any Section heading or Keyword in either of the INI files (see Information Tool).
- (6) Delete any Section heading or Keyword in either of the INI files (see Delete Tool).
- (7) Edit any Keyword in either of the INI files.
- (8) Search for items in either of the INI files (see Search Tool).

File Menu

The file menu contains items to change fonts, setup the printer , print all or part of the INI file , and exit the program:

Files	
<u>C</u> hange Fonts....	Ctrl+C
<u>P</u> rint Setup....	Ctrl+S
<u>P</u> rint....	▶
<u>E</u> xit	Ctrl+X

The Change Fonts menu item allows you to change the font in the two list boxes, Current INI and Base INI.

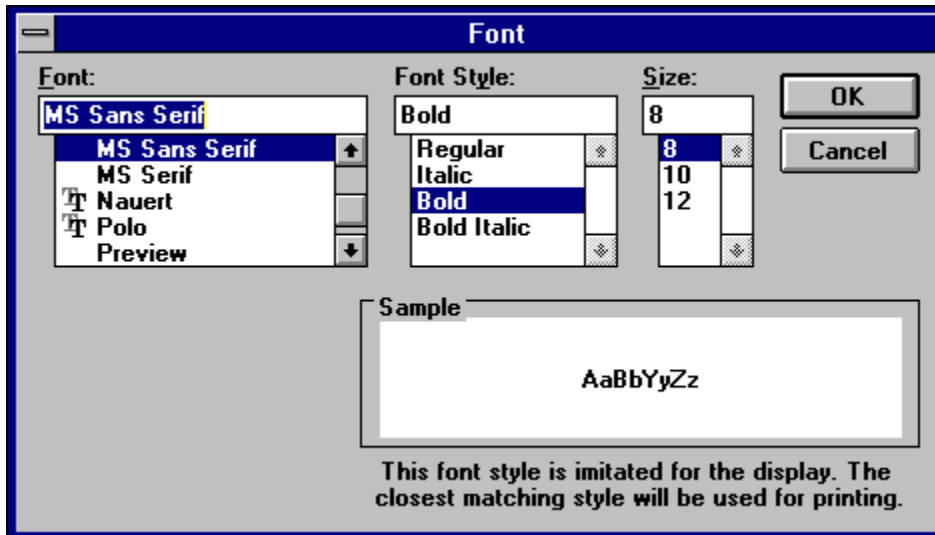
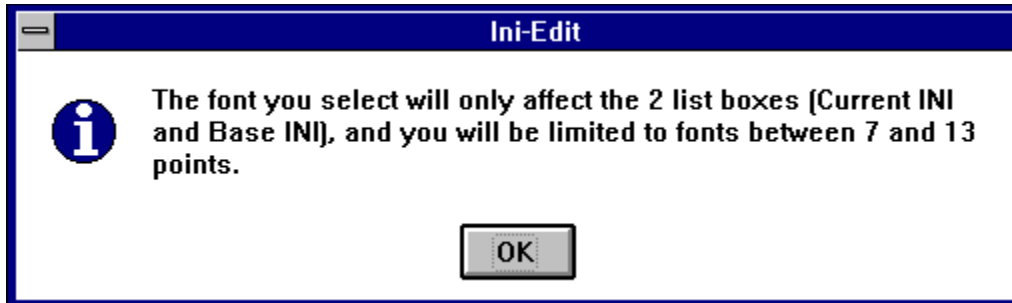
The Setup Printer menu item allows you to change printers, portrait/landscape modes, paper size, and paper source.

The Print menu item allows you to print the entire INI file, or just a Section. The printout has a heading, page numbers, and indentating to make it easier to read.

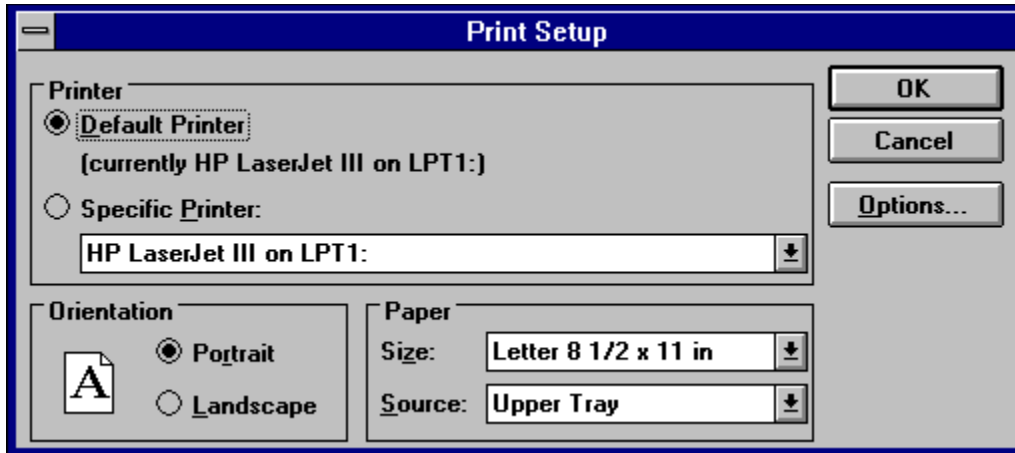
The Exit menu item works exactly the same as the Exit Tool.

Change Fonts

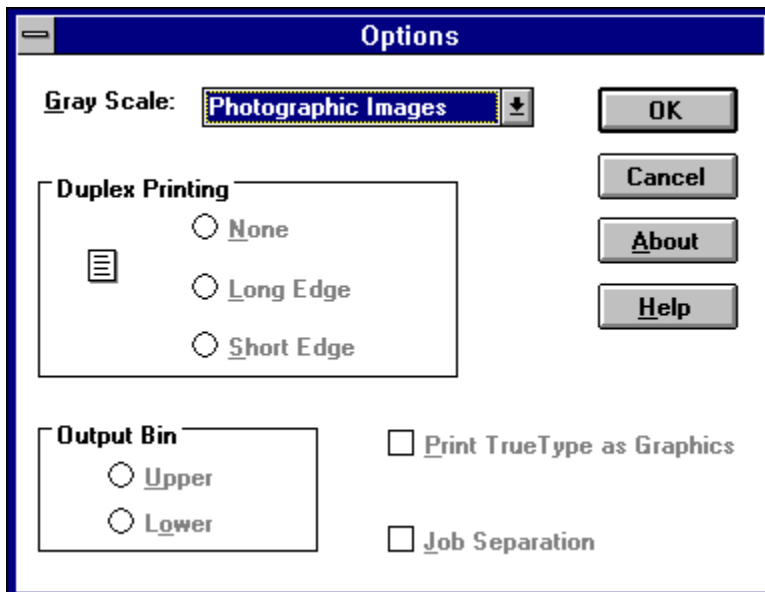
The Change Fonts allows you to change the fonts in the list boxes (Current INI and Base INI) for easier readability. You are restricted to fonts between 7 and 13 points.



Setup Printer



The Printer Setup menu item allows you to change printer, change from portrait to landscape and back again, and change the paper size and the source (if applicable). Depending upon the printer, you can get a second screen when you hit the [Options] button (example below is for a HP LaserJet III):

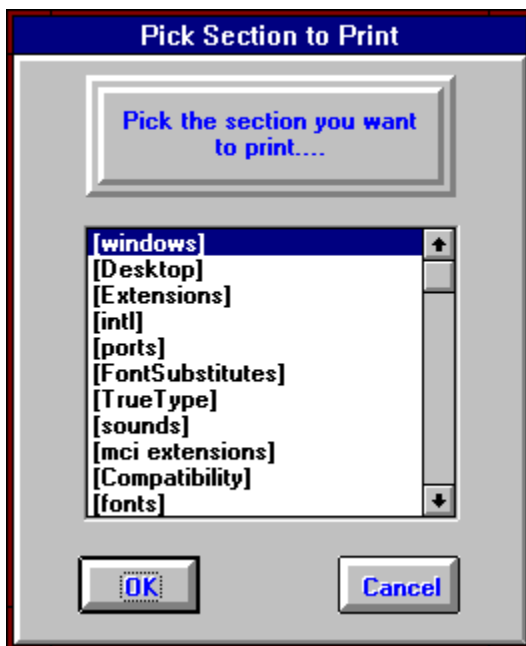


Print

The Print menu item has two submenu items:

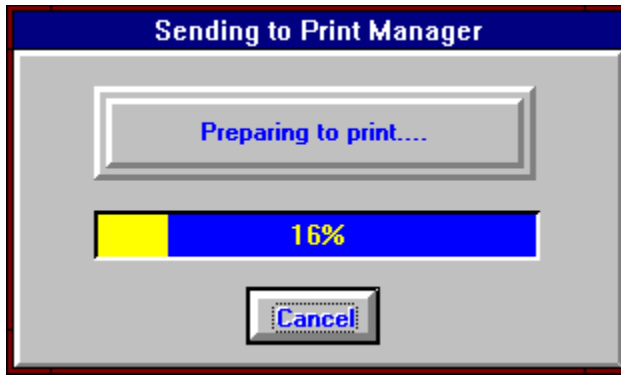
Files		
<u>C</u> hange Fonts....	Ctrl+C	
<u>P</u> rint Setup....	Ctrl+S	
<u>P</u> rint....		Print Section Ctrl+P
<u>E</u> xit	Ctrl+X	Print Entire Ini File Ctrl+I

If you select Print Section, you will get the following pop-up:



The default selection will be for the Section you are currently on in the program, but you can select any Section to print. The program is designed to print only the Current INI, not the Base Ini file.

If you select Print Entire INI file, you will get the following pop-up:



Since it takes time to prepare the headings and page numbers, and to format the page for readability and line breaks, this pop-up give you the chance to abort the print process. However, as soon as you abort, all the pages prepared up to that point will be printed.

Windows Version

The Windows Version menu selection defaults to the version of Windows you are currently running (either Windows 3.0 or 3.1). If you change the selection, it will change the list displayed in the Base INI Listbox (but not in the Current INI Listbox).



Help Menu

There are 3 selections on the Help Menu selection. You are currently using the Contents selection. The Help To Use Help selection is generic help for all Windows applications on how to use Windows help. The About selection simply shows a box with the copyright notice, version information, and system information.

Note that the Help key [F1] works throughout most of the application, including the menus, bringing up context-sensitive help whenever possible. However, the Help Mode [Shift]+[F1], is not implemented at this time.

H elp
C ontents
H ow to Use Help Ctrl+H
A bout IniEdit Ctrl+A

Current INI ListBox

The Current INI Listbox shows your current Windows INI file (WIN or SYSTEM, depending upon the setting of the Ini File Selection). It will be the file (either WIN or SYSTEM) found in your current Windows directory.

If you change the setting of the Ini File Selection, it will change the file displayed in both the Current INI Listbox and the Base INI Listbox. If you change the setting of the Windows Version Selection menu item, it will change only the Base INI Listbox.

The Current INI Listbox defaults to showing the Section headings. By double-clicking on the Section headings, the Keywords for that section will be displayed. If the Keywords are currently displayed, then you can double-click on either the top element of the listbox (... <<Back to Titles>>), or by the new button that will appear on the screen.



The items in the Current INI Listbox and the Base INI Listbox will attempt to line up with identical Section headings or Keywords directly across from each other. This is based on the order in the Base INI. The two listboxes will also scroll in unison when using the mouse to click on an item in either box, when using the up and down arrow keys, or when using the scroll bars..

While the focus is in the Current INI Listbox, the <INS> key will act like the Add Tool, and the <DELETE> key will act like the Delete Tool.

Base INI ListBox

The Base INI Listbox shows the base (ie, example) Windows INI file(WIN or SYSTEM, depending upon the setting of the Ini File Selection).

If you change the setting of the Ini File Selection, it will change the file displayed in both the Current INI Listbox and the Base INI. If you change the setting of the Windows Version Selection menu selection, it will change only the Base INI.

The Base INI Listbox defaults to showing the Section headings. By double-clicking on the Section headings, the Keywords for that section will be displayed. If the Keywords are currently displayed, then you can double-click on either the top element of the listbox (... <<Back to Titles>>), or by the new button that will appear on the screen.



The items in the Current INI Listbox and the Base INI Listbox will attempt to line up with identical Section headings or Keywords directly across from each other. This is based on the order in the Base INI Listbox. The two listboxes will also scroll in unison when using the mouse to click on an item in either box, when using the up and down arrow keys, or when using the scroll bars.

INI File Selection

The INI File Selection defaults to WIN.INI when you first start the program. If you change the selection to System.INI, or back to Win.INI, it will change the list displayed in both the Current INI Listbox and the Base INI Listbox.

Status Bar

The Status bar displays text about the various items on the main INI-File Editor screen. It is updated as you move your mouse across the window. It is also updated when you use your arrow keys to move between menu items.

Tool Bar

The ToolBar is a selection of 8 icons allowing you to accomplish various tasks in the program without going to the menu. As you move your cursor over the ToolBar, the Status Bar will be updated with a text description of the Tool item.



See also:

[Exit Tool](#)

[Save Tool](#)

[Search Tool](#)

[Information Tool](#)

[Copy Tool](#)

[Add Tool](#)

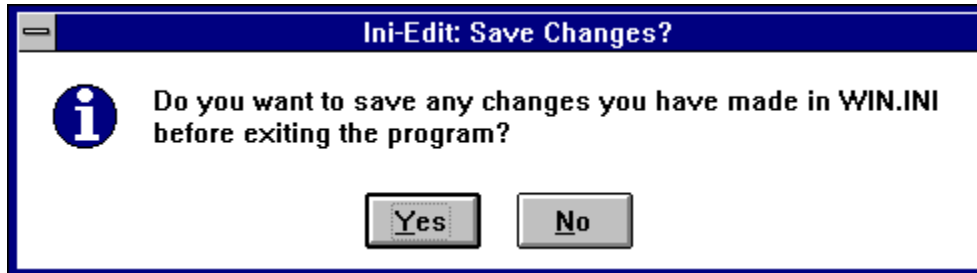
[Edit Tool](#)

[Delete Tool](#)

Exit Tool



Whether you pick this Exit Tool, the Exit from the Files menu, or hit [ALT]+[F4], the result is the same. You will always be asked if you want to save the Current INI file you are working on, *whether or not you have made any changes to it!*



Whichever selection you make (Yes or No), the program will clean up any temporary files it created. If you picked YES, your WIN or SYSTEM.INI will be updated with any changes you have made.

If you have an unregistered copy, you will get a "nag" screen just before exiting. Simply click on the OK button to get rid of the screen and complete exiting the program.

Save Tool



When you start the program, it creates a file WIN.X%% and SYSTEM.X%%, where %% is a number between 00 and 99. This file is a copy of the current WIN.INI and the SYSTEM.INI file. The program checks to see what *.X%% files are already present, and creates a file that increments that number by one. When you save a file, the current *.X%% file is copied to the *.INI file, and a new *.X%% file is created, again incrementing the %% by one.

Search Tool



The Search Tool allows you to search either the Current or the Base INI Listbox for text. The Listbox it searches will be the one that had last had focus when this tool is clicked. The text you type in the box will "track" characters as they are typed in, so the program immediately starts searching for a match as you type each letter.

A dialog box titled "Find Text" with a blue header. It contains a text input field with the placeholder text "Type in the text you want to search for...." and an "OK" button below it.

Find Text

Type in the text you want to search for....

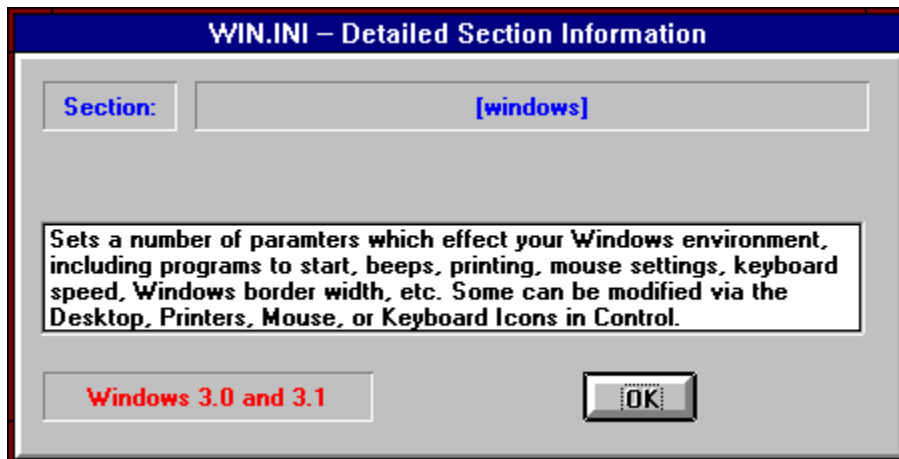
OK

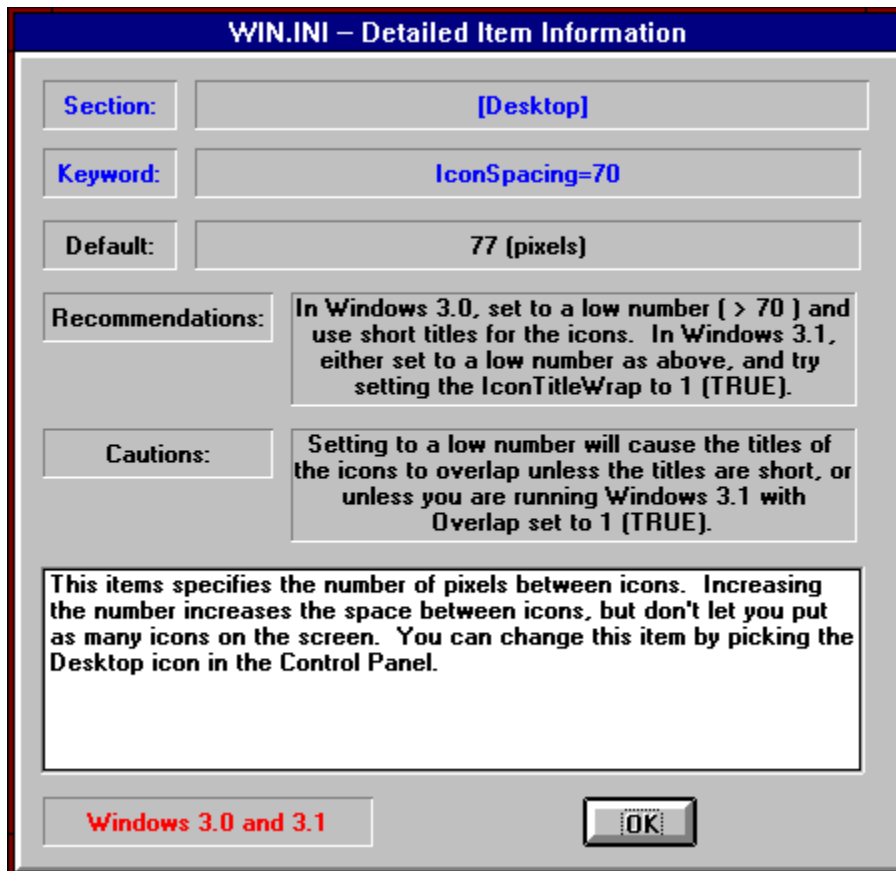
Information Tool



The Information Tool give you information from the database on the Section title or Keyword which you are currently on.

Depending upon whether you last clicked on a Section title or a Keyword, you will get one of the two following screen:





The Section Information shows the Section title, text information on the Section, and whether the information applies to Windows 3.0, Windows 3.1, or both.

The Keyword Information shows the Section title, Keyword, Defaults (if any), Recommendations (if any), Cautions (if any), a text information field, and whether the information applies to Windows 3.0, Windows 3.1, or both.

Note that the program will only find Keywords under the "correct" Section headings.

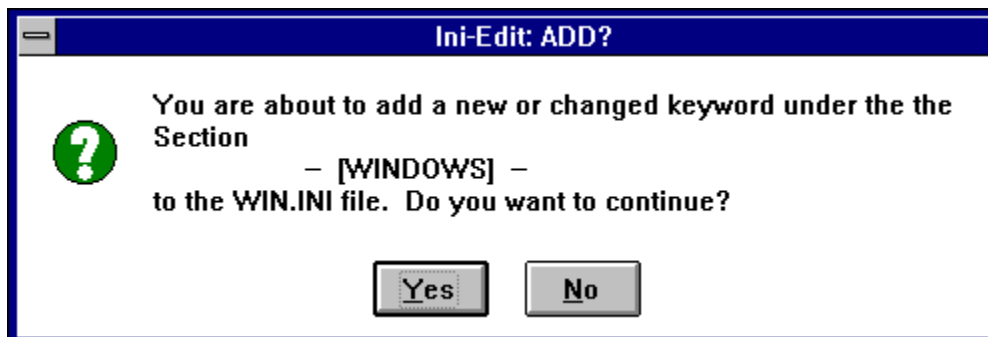
You can add or edit the databases. See [Files Needed to Run Program](#).

Copy Tool

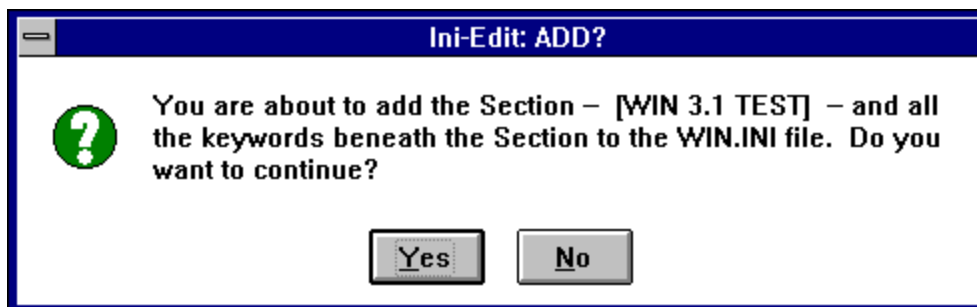


The Copy Tool allows you to copy either a Keyword or an entire Section heading from the Base INI to the Current Ini.

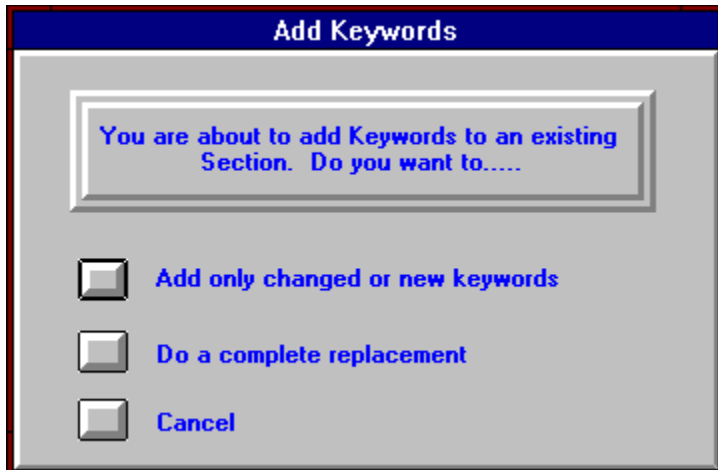
If you are on a Keyword when you click the Copy Tool, you will get the following screen:



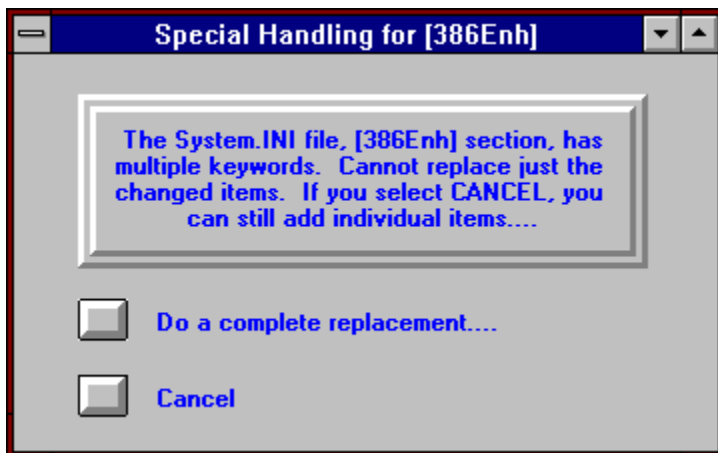
If you are on a Section title when you click the Copy Tool, and the Section does not exist in the Current INI file, you will get the following screen:



If you are on a Section title when you click the Copy Tool, and the Section already exists in the Current INI file, you will get the following screen. Note that you have a choice of adding only new or changed Keywords/Values, doing a complete replacement of all the Keywords/Values, or cancelling the operation.



If you are on the [386Enh] Section of the SYSTEM.INI, you will get the following screen. Since the [386Enh] Section has multiple DEVICE= lines, it is not possible to do an intelligent partial replacement. So, it is an all-or-nothing proposition.



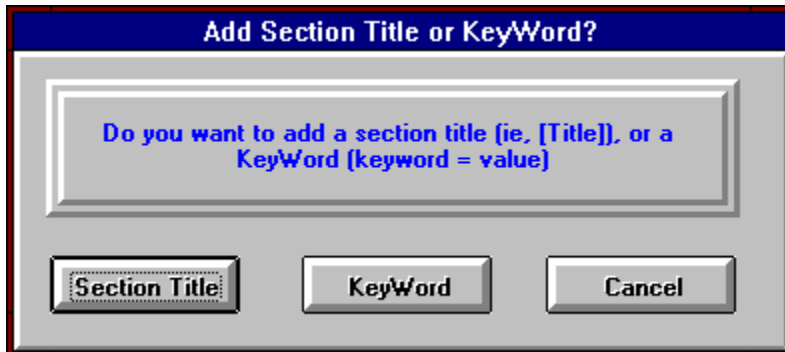
See also [Drag & Drop](#)

Add Tool

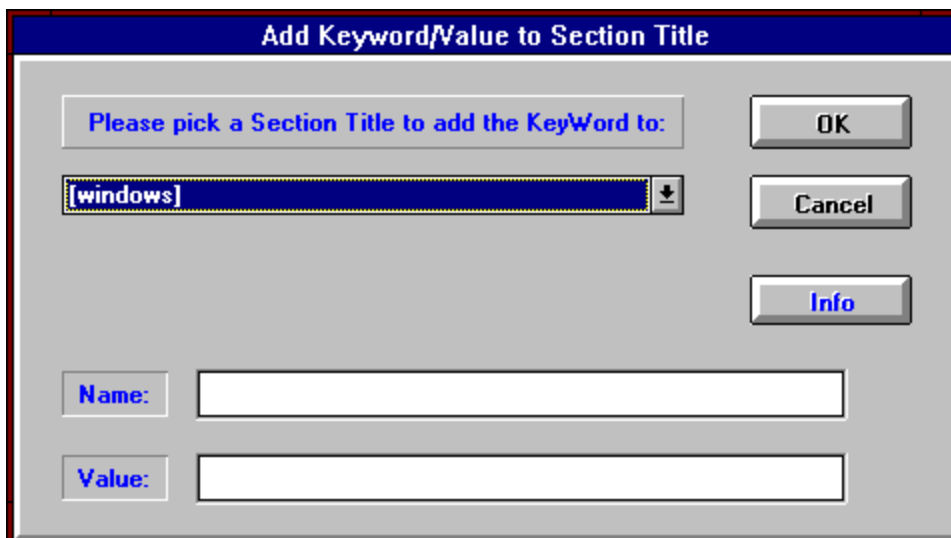


The Add Tool allows you to add either a Section Title or a Keyword/Value to the Current INI file. The <INS> key will act just like the Add Tool when the focus is in the Current INI list box.

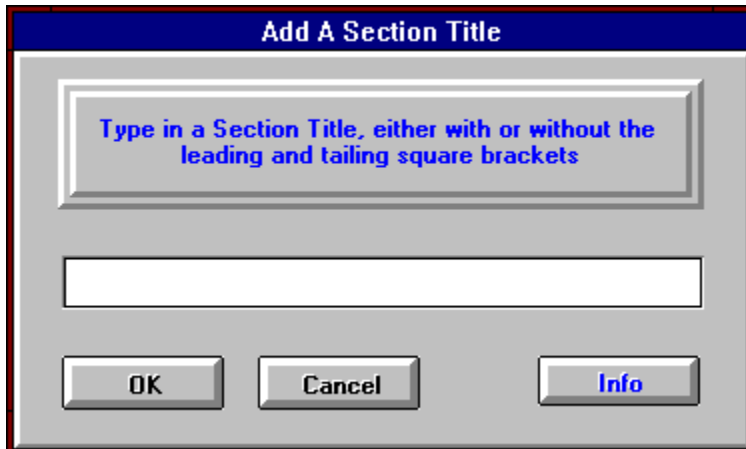
If you are currently looking only at the Section titles, the following screen will allow you to select whether you want to add a Section or a Keyword:



If you are currently looking at the Keywords of a section, or picked Keyword from the screen above, you will get the following screen. If you were looking at the Sections, the screen will be as shown below. The Section Title defaults to the current Section, but you can pick any one you want. If you were looking at the Keywords when you picked the Add Tool, the Section will be a label, not a drop-down selection box -- ie, you cannot pick a different Section.



If you picked Section in the first screen, you will get the following screen:



The image shows a dialog box titled "Add A Section Title" with a blue header bar. Inside the dialog, there is a text input field with a blue border and a blue shadow. The text inside the field reads: "Type in a Section Title, either with or without the leading and trailing square brackets". Below the input field is a white rectangular box. At the bottom of the dialog, there are three buttons: "OK", "Cancel", and "Info". The "Info" button is highlighted in blue.

In both the second and third screens above, the Info button allows you get information on that Section or Keyword, just as if you picked the Information Tool from the main screen.

Edit Tool



The Edit Tool allows you to edit the Value portion of the Keyword/Value item. It will not allow you to edit either a Section title or the Keyword itself.

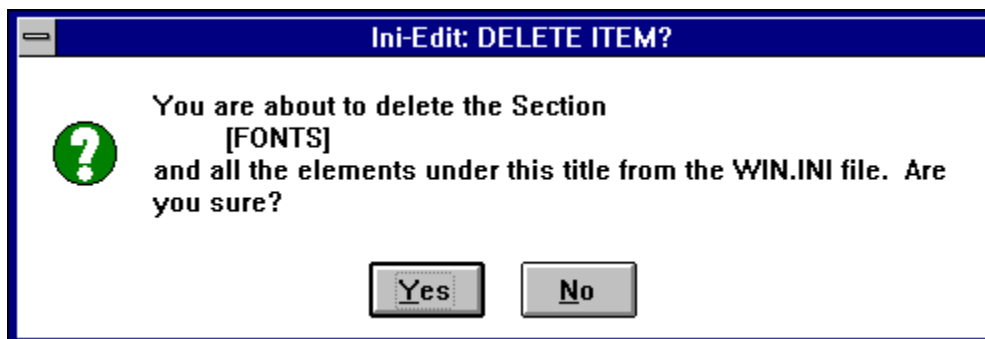
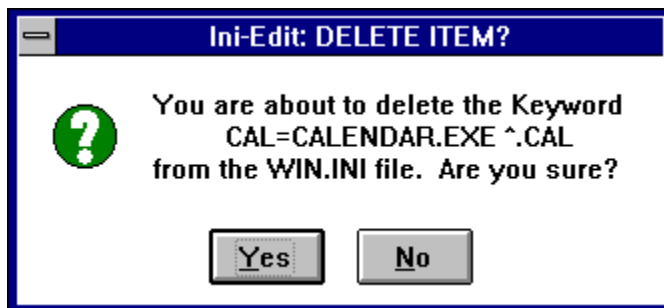
The Section title and the Keyword itself is non-editable. The Value is the only part of the line that is editable.

The Info button allows you get information on that Keyword/Value, just as if you picked the Information Tool from the main screen.

Delete Tool



The Delete Tool will allow you to delete either a Section (with all the Keywords under the Section), or a Keyword/Value from the Current INI. The <DELETE> key will act just like the Delete Tool when the focus is in the Current INI list box. In either case, you will get one of the following warning message boxes:



Drag & Drop

Drag & Drop allows you to do exactly the same job as using the Copy Tool. You can only Drag & Drop from the Base INI to the Current Ini file.

To initiate a Drag & Drop, click with your **RIGHT** mouse button on the line in the Base Ini which you wish to copy. While still holding down the right button, drag the item to the Current Ini Listbox. The cursor will change to a left-pointing hand when over the Current Ini Listbox, and a circle with a line through it if anywhere else (see below):



You can DROP the item only in the Current INI Listbox.

Files Needed to Run the Program

The installation program should install the files needed by this program in the correct directories. However, if you have a problem, the following is a list of the needed files and the directories in which they are installed:

(NOTE: You will also need VBRUN200.DLL in either the Windows or the Windows/System directory -- if you got these files from a BBS, it is not included due to size limitations. If you got the files from a shipping disk, it will be installed automatically)

Windows\System directory:

Threed.VBX	3-D controls from Sheridan Software Systems, Inc.™
PicClip.VBX	Hidden multiple picture control, Microsoft™
CsText.VBX	Enhanced text control, Crescent Software™
QPList.VBX	Enhanced listbox control, Crescent Software™
CsForm.VBX	Enhanced form control, Crescent Software™
CsMeter.VBX	Bar meter control, Crescent Software™
CsDialog.VBX	Enhanced Common dialog front-end, Crescent Software™
QPro200.DLL	Utility routines, Crescent Software™

Only needed for Windows 3.0 (included with Windows 3.1)

CommDlg.DLL	Common Dialog DLL, Microsoft™
DDEML.DLL	DDE dynamic link library, Microsoft™

Executable directory:

(NOTE: The following files can be in any directory on your hard disk, providing that they are all in the same directory. It is best, however, to make a separate directory for these files, so it is easy to un-install the program later if needed.)

IniEdit.HLP	The HELP file for this program (you are using it now).
IniEdit.EXE	The executable program.
S_Titles.LKP	Database of <u>Section</u> headings in <u>System.INI</u>
W_Titles.LKP	Database of Section headings in <u>Win.INI</u>
S_Data.LKP	Database of <u>Keywords</u> in System.INI
W_Data.LKP	Database of Keywords in Win.INI
System.X30	Example System.INI for Windows 3.0
System.X31	Example System.INI for Windows 3.1
Win.X30	Example Win.INI for Windows 3.0
Win.X31	Example Win.INI for Windows 3.1
Read_Me.WRI	Readme file -- check for most current information on program
Register.DOC	Registration form in ASCII format
Register.WRI	Registration form in Windows Write format

All the files in the executable directory, with the exception of the IniEdit.EXE and IniEdit.HLP, can be edited by the user. The 4 example files are pure ASCII text files, just like the "real" WIN.INI and SYSTEM.INI. The 4 *.LKP files are text database files. Information on how to edit these *.LKP files are listed at the beginning of each of these

files.

Program Won't Load

If you already have one copy of Ini-File Editor running, you will not be able to start another copy of the program. You will get a message box that says another copy of the program is running, and the copy you are trying to load will abort loading.

Scrollbar Definition

A bar that appears at the right and/or bottom edge of a window whose contents aren't completely visible. Each scroll bar contains two scroll arrows and a scroll box, which allows you to scroll with the mouse by either clicking on the arrows (small scroll) or the space between the arrows and the thumb-bar (large scroll). You can also click-and-drag the thumb-bar to whatever position you wish.

Section Definition

The Section title is always enclosed in square brackets (ie, []) and the left bracket must always be at the leftmost column on the screen. The Keywords for that section are listed under the Section title.

Keyword Definition

The Keyword consists of the keyname and the value -- ie, **Keyword = Value**. The keyname is the name of an entry under a specific Section title, and can consist of any combination of letters and numbers. It must be followed immediately by an equals sign. The value can be an integer, a string of characters, or a quoted string.

WIN.INI

The Win.INI file is used by Windows to store the user and program customizations to the Windows environment. It contains items that deal with colors, sounds, characters sets, fonts, ports, appearance of the desktop, Windows HELP, etc.

SYSTEM.INI

The System.INI file is used by Windows to store global system information that Windows uses when it starts. It contains the device drivers that Windows uses. You should not change items in this file unless you are sure of what you are doing, since an incorrect change here can keep Windows from booting.

Focus

In Windows, normally the last item you clicked on or tabbed to (distinguished by a different color or look to the item, depending upon your selections in Colors in the Control Panel).

Base INI

The Base INI Listbox contains examples of either WIN.INI or SYSTEM.INI files for either Windows 3.0 or 3.1. These example files can be modified to meet your needs (See Necessary Files).