

# **FExtend: File Manager Extension for Windows NT Operating System**

Version 1.0 12/14/1992

(c)Babarsoft, written by Mark Gamber

## **Overview**

Menu Items:

**Trash Can**

**Information**

**Attributes**

**Date/Time**

**Configure**

**Save Positions**

## **About FExtend**

Windows NT is a trademark of Microsoft Corporation

## **FExtend Overview**

FExtend works with the File Manager, providing four "applets" to which files selected in File Manager may be dragged to and dropped on. The applets include a Trash Can, Information window, Attribute window and Time/Date stamp window. Each window is designated by a picture which describes the window and changes to indicate some action. The Trash Can, for example, looks like a trash can and the lid raises and lowers to indicate something's being deleted.

Each applet may be configured to load along with File Manager automatically and to "float" above all other windows at all times. An applet may be opened and closed at any time through the FExtend menu or by double-clicking the left mouse button over the window. The FExtend menu reveals which items are opened with a check next to the menu item. Selecting an unchecked item opens the window, selecting a checked item closes the window. A window saves its screen position when closed and uses the position when reopened. The screen positions of all windows may be updated at any time through the Save Position menu item.

**Trash Can**{ewl FEXTENT.DLL,FEXTEND,TRASHCAN}

The Trash Can applet is the one that looks like a trash can. Files dropped on the Trash Can are deleted, if possible. If File Manager has been configured to ask for confirmation when deleting files, you are also asked to confirm deleting from the Trash Can. The lid raises and lowers to indicate some action has taken place and the window from which the files were dragged is updated when the process is complete.

**Information**{ewl FEXTENT.DLL,FEXTEND,PROPS}

This window uses a yellow question mark to identify itself. Dropped files have various pieces of information displayed including the file's name(s), byte size, current attributes and time/date of last modification. Double-Clicking on a file or highlighting a file and pressing "**Version**" displays Windows version information, if any can be extracted from the file in question. Technical information may be extracted from executable files by highlighting the file and pressing the "**Info**" button.

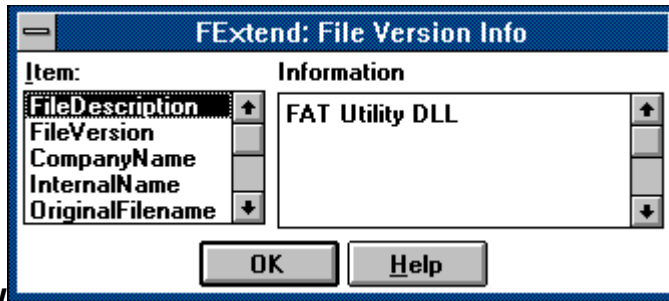
File Name	Byte Size	Attr	Time/Date Modified
CLOCK.EXE	37376	A	00:29.22 10/28/1992
GDI32.DLL	274432	A	00:46.54 10/28/1992
NETAPI32.DLL	584192	A	00:45.58 10/28/1992
NOTEPAD.EXE	50688	A	00:33.00 10/28/1992
NTDESK.CPL	71168	A	23:23.02 10/27/1992
NTDLL.DLL	475648	A	00:45.42 10/28/1992
OLECLI32.DLL	271360	A	00:34.24 10/28/1992
SPOOLSS.DLL	15360	A	00:37.24 10/28/1992

OK    Version    Info    Help

Information Window

### **Version Information**

Most Windows files contain version information to help with installation and upgrading. This information may be viewed from the Information window by double-clicking the file of interest or highlighting the file and pressing "**Version**". If any information is found, it is displayed in a window with a list of possible items on the left. Select any of the items to display the item information in the window to the right. If no information exists for the selected item, nothing is displayed. Technical information may be obtained through the "**Info**" button in the Information window.

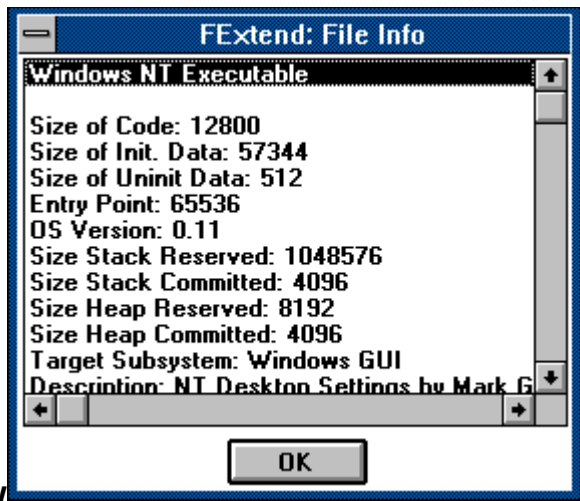


Version Information Window



**File Information**

All executable files have a set header containing information about the file such as memory needs, operating system version and so on. FExtend displays the operating system the file is intended for, such as DOS, OS/2 or Windows 3.x or NT and various pieces of information related to the target operating system. Some files simply cannot be read, others cannot be read while in use by an operating system and DOS COM files are considered obsolete and ignored.



File Information Window

**Attributes** {ewl FEXTENT.DLL,FEXTEND,ATTRIB}

This one looks like a document icon with four colors signifying the four attributes available to be changed. Files dropped on the Attributes window are assigned attributes as specified by the window's configuration which may be changed by clicking the right mouse button over the window. A checked attribute is applied to all files dropped, an unchecked item strips all files of the attribute and a "grayed" item leaves the attribute alone. The configuration may be changed at any time, but all files dropped at once take on the settings at the time of the drop.

**Time/Date Stamp**{ewl FEXTENT.DLL,FEXTEND,TDSTAMP}

Appearing as a time clock, this changes the time and date of last modification of all files dropped using it's latest configuration. The time and date used may be changed by clicking the right mouse button over the window. If "**Use System Time**" is checked, new time and date entries are ignored and the current time relative to the drop is used. If unchecked, the values entered are applied to the files. You may use any time and date from **00:00 01/01/1980** to **23:59 12/31/2099**. The configuration may be changed at any time, but all files dropped at once take on the settings at the time of the drop.

## **Configure**

A window may be selected to load automatically with File Manager by checking the box next to the item in the "**Auto-Start**" group. In addition, a window may be set to "float" above all other windows at all times by checking the box next to the item in the "**Stay On Top**" group. When this setting is used, the selected windows will appear even if File Manager (or any other window) is maximized, allowing access to the window.

File deletes, time/date and attribute changes are all subject to the usual file system errors as well as new errors that may occur on an **NTFS** file system. To help figure out what's causing errors, or just to view the operation status, "**Report**" items may be checked for the Trash Can, Attribute and Time/Date functions. If checked, a window reports the progress of the operation in progress. Left unchecked, the operation is performed with no status report. Check the "**Errors Only**" box to display only errors that occur during operation. Unchecked, all operations are displayed.

Check "**Refresh File Window when Done**" to force File Manager to update the window from which the files were dragged. Otherwise, the window may not be updated and files displayed may not be valid.

Check "**Save Positions when Closed**" to force the applet windows to save their current screen positions when closed by either a double-click, menu command or closing File Manager. If unchecked, the windows open to last position saved and do not save upon closing.

You may reset the applet windows and uninstall FExtend by pressing "**Special**". In addition, FExtend adds a menu item to the File Manager with the "hotkey" being ALT-X. This may be changed, along with the menu name itself, by pressing the "**Menu**" button.

### **Special Functions**

Pressing "**Special**" displays a window from which you can reset all window positions to the upper left corner of the screen and uninstall FExtend. If any of the windows do not appear to be working or you have changed screen resolutions and the windows no longer appear on the screen, select "**Reset Window Locations**" and all the windows should appear in the upper left corner of the screen, allowing access once again. Uninstalling FExtend simply removes the utility from the list of add-ons in **WINFILE.INI**. It is up to you to delete the actual files involved. The files used by FExtend are **FEXTENT.DLL**, **FXEXE.EXE** and **FEXTEND.HLP**.

### **Menu Function**

By default, FExtend adds the menu item "**FExtend**" to the File Manager's window, the "hotkey" being **Alt + X**. As this may conflict with another application or be considered plain ugly, it can be changed through the **Menu** option. The current menu name is displayed at the top of the window and the box below is for entering a new menu name. The new "hotkey" is designated by placing an ampersand("&") before the letter to use. For example, to change the menu to "Utilities" and use ALT + U as the hotkey, "&Utilities" would be entered.

**FExtend Menu**

Current Menu Name: FExtend

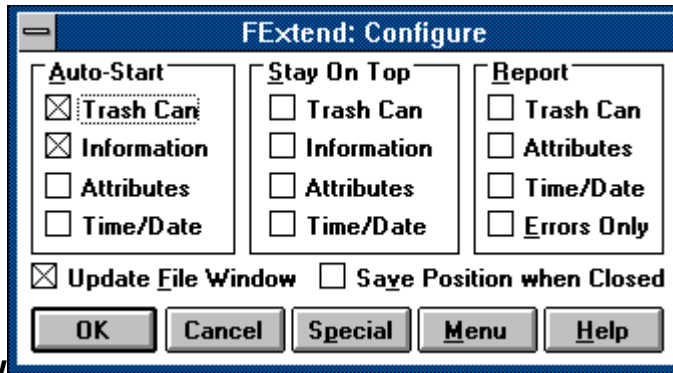
New Menu Name:

Menu Window



Special Function Window





Configuration Window

**Save Positions**

The current positions of all windows may be saved at any time by selecting this menu item. Window positions are also saved when the window is closed. The last recorded position is used to position the window when it is reopened manually or by File Manager on startup.

### **About FExtend**

FExtend is not public domain but may be freely distributed with no charge from the author. It was written for the October release of the Windows NT Operating System and may change from version to version of Windows. In using the software, the user indemnifies and holds harmless the author and software from any damages incurred whether real, imaginary or conjured. If the user is unable to accept this, the software must be destroyed. No guarantees are implied.

Every attempt was made to keep this software as close as possible to the Windows 3.1 version. Due to differences in the file systems, security and access rights, some differences are bound to occur, however. In these cases, FExtend accounts for the errors and moves on without displaying the errors encountered.

If you would like to contact the author concerning bugs, ideas and job offers, the author may be reached at the following locations:

<b>America Online E-Mail: PCA MarkG</b>	
<b>{ewl FEXTENT.DLL,FEXTEND,MODEM}</b>	<b>Compuserve Mail:</b>
<b>76450,2754</b>	
<b>Internet Mail:</b>	<b>pcamarkg@aol.com</b>

Note: Internet file transfers are simply not possible. Sorry.

