



## **Rebound Help Index**

### **Introduction**

[What is Rebound?](#)

[Using Rebound](#)

[What's New](#)

### **Reference Topics**

[Rebound Features](#)

[Rebound Options](#)

[Configuring Rebound](#)

[Rebound Preferences](#)

[The REBOUND.INI File](#)

[Files Contained in This Package](#)

[Registering Rebound](#)

## What is Rebound?

### Overview

Rebound makes it easier to use the Windows 3.1 Common Dialog Windows for file selection by:

1. automatically remembering the last few Types, Files, and Directories used for each application that uses Common Dialog Windows for File Open and File Save As operations.
2. allowing you to specify a few additional Permanent Types, Files, and Directories for each application that uses Common Dialog Windows for File Open and File Save As operations.
3. allowing you to perform the following operations from a File Open and File Save As Common Dialog Window:
  - search for files and open any file found as a result of a search by double-clicking it,
  - create a new subdirectory and change the current directory to it,
  - move, copy, or delete a selected file, and
  - change Rebound's Configuration or Preferences settings.
4. allowing you to optionally display the following file properties at the bottom of the Common Dialog Window for a selected file:
  - the date and time the file was last modified,
  - the file size in bytes, and
  - the file attributes: Read Only, Read/Write, and Archive, if present.
5. making the above features available in the Common Dialog Windows for File Open and File Save As through either:
  - the Control Menu, or
  - a combination of pop-up menus and a toolbar.

## Using Rebound

(We recommend you print this section for reference the first time through.)

1. In order to use Rebound, first follow the instructions in [Installing Rebound](#)
2. Next, open an application that uses Common Dialog Windows for file selection. For example, open the Windows 3.1 version of Notepad. From within Notepad, select the File Open command.
3. Note that the icon for the [Control Menu](#) has been replaced by the Rebound icon and the Common Dialog Window has been extended to display the toolbar containing Rebound Operation Buttons.
4. Open any file using the File Name: and Directories: controls in the dialog window.  
For example, open the AUTOEXEC.BAT file in the root directory of your boot disk (in this example, drive C: is assumed to be the boot disk) as follows: in the **File Name:** list box, change the type to **\*.BAT**, and in the **Directories:** list, select the root directory c:\, then press **Enter** or click on **OK**.
5. Now exit from Notepad. Open Notepad again and select the File Open command.  
When the File Open Dialog Window appears, select the Control Menu by clicking on the Rebound icon in the upper-left corner. Rebound has added Control Menu items named **Types**, **Files**, and **Directories**, plus a separator followed by two more items named **Options** and **About Rebound**. Select each of these options in turn.
6. Now try to click (without releasing the mouse button) on the existing labels from the Common Dialog Window named **File Name:**, **Directories:**, and **List Files of Type:**.  
As you can see, Rebound has remembered the Type, File, and Directory of the last accessed file, namely C:\AUTOEXEC.BAT. When you opened AUTOEXEC.BAT the first time, Rebound added it to its list of last accessed files for the Notepad application.  
The next time you wanted to open AUTOEXEC.BAT, it was available from the **Files** option on the Control Menu, or from the pop-up menu attached to the existing Common Dialog label for **File Name:**. Thus the file could be conveniently and quickly selected regardless of the default drive or directory displayed in the File Open Dialog Window.

Rebound remembers a few of the Last Accessed Types, Files, and Directories for each application that uses Common Dialog Windows. After the [Maximum Number of Entries](#) have been added to any Last Accessed list and another item is selected, the new item is added as the last (top) entry, all previous entries move down one position, and the first (bottom) entry is lost.

Some files are used repeatedly for an application, but possibly not frequently. For example, you might use Notepad to edit your WIN.INI or AUTOEXEC.BAT files, but you do not edit these files often. Still, it is handy to have them in a list for quick access, even though the files themselves may be in different directories. Or, you may want to keep an entry from the Last Accessed list for future use.

For these situations, Rebound maintains lists of [Permanent](#) Types, Files, and Directories for an application in addition to the Last Accessed lists. You can configure Rebound to remember a few Permanent Types, Files, and Directories for an application. See [Configuring Rebound](#) for more information.



## Rebound Features

Rebound can be enabled to provide the features listed below through either or both of:

- the Control Menu of the Common Dialog Window, in which case the Rebound icon replaces the default Control Menu icon, or
- a combination of pop-up menus and a Toolbar added to the Common Dialog Window.

Display Preferences can be set from the Rebound Preferences Dialog Window.

### Types

Displays the list of Last Accessed and Permanent files types (or extensions - the part of the filename following the "."), if any, for the current application. Note that Rebound will only enter a file type in the Last Accessed list if you open a file of that type or click on the OK button after entering the file type in the **File Name:** list box. If you select a type from the Last Accessed list, Rebound moves that selection to the top of the list.

### Files

Displays the list of Last Accessed and Permanent files, if any, for the current application.

### Directories

Displays the list of Last Accessed and Permanent directories, if any, for the current application. Note that Rebound will only enter a directory in the Last Accessed list if you open a file from that directory or click on the OK button after selecting the directory in the **Directories:** list box. If you select a directory from the Last Accessed list, Rebound moves that selection to the top of the list.

### Options

#### About Rebound

Displays the About Rebound dialog window.

## Rebound Options

Rebound can be enabled to provide the options listed below through either or both of:

- the **Options** menu entry on the Control Menu of the Common Dialog Window, or
- a Toolbar added to the Common Dialog Window.

These Preferences can be set from the Rebound Preferences Dialog Window.

### Find File

Prompts you to specify the name of a file to find, and the directory path from which to start the search. You can optionally choose to search all subdirectories of the specified directory. You can double-click on any file displayed as a result of a search to open it.

### Copy File

Prompts you to specify a new directory path and file name for the file selected in the **File Name:** list of the file selection Common Dialog Window, and then copies the selected file to the new location. If no file is selected, Rebound displays an information message.

### Move File

Prompts you to specify a new directory path and file name for the file selected in the **File Name:** list of the file selection Common Dialog Window, and then moves the selected file to the new location. The original file is deleted. If no file is selected, Rebound displays an information message.

**NOTE:** due to MS-DOS limitations, a file cannot be moved across disk volumes (i.e. from one disk to another) with this option.

### Delete File

Confirms your delete request for the file selected in the **File Name:** list of the file selection Common Dialog Window, and then deletes the selected file. If no file is selected, Rebound displays an information message..

### Create Directory

Prompts you to specify the name of a new directory, then creates and changes the default directory to the new directory. This is useful if you want to save a file into a new directory without leaving the File Save As Dialog Window.

### Configure Rebound

### Preferences

### Help on Rebound

Displays the Windows Help file for Rebound, REBOUND.HLP.

## Installing Rebound

To install Rebound, perform the following steps:

1. Un-zip the files from the archive file RBND10.ZIP.
2. Copy the files REBOUND.EXE, RBNDLIB.DLL, and REBOUND.HLP to your Windows directory, and copy the file BWCC.DLL to your Windows SYSTEM subdirectory. (BWCC.DLL contains the custom controls used by Rebound to display the About Dialog and the Configure Dialog Windows.)
3. Edit your WIN.INI and add REBOUND.EXE to the LOAD= line following the keyword [windows]. For example:

```
[windows]
spooler=no
load=REBOUND
run=
Beep=Yes
...
```

4. Save the changes to WIN.INI and exit Windows.

(As an alternative to steps 3 and 4, in Windows 3.1 you can create a Program Item for Rebound and place the icon in the Startup Program Group of the Program Manager to achieve the same effect.)

5. Restart Windows. Rebound should now be operational. See [Using Rebound](#) for usage details.

## **Background on Common Dialog Windows**

Windows 3.1 provides built-in support for Common Dialog Windows to perform common user operations such as File Open, File Save As, Find and Replace Text, and Choose Font from within an application. Applications display Common Dialog Windows by calling Windows-supplied functions located in a dynamic link library named COMMDLG.DLL, which is located in your Windows SYSTEM subdirectory.

Common Dialog Windows provide a consistent interface across all applications that use them. Examples of Windows 3.1 applications that make use of Common Dialog Windows include Excel 4.0, Notepad, Paintbrush, Write, Windows Help, and the Browse button in the Program Manager's File Run Command Dialog Window.

However, there is a drawback to using Common Dialog Windows. You still have to climb and descend directory trees and manually select drives or file types to locate the file or directory you want. Common Dialog Windows provide no inherent method for tracking previously-used or frequently used files across sessions for an application.



## **New Features**

Rebound is first and foremost, a new name for an existing product, namely Open Axess.

Rebound adds the following new features over Open Axess V. 2.10:

1. Quick Open,
2. additional File Operations (Copy, Move, Delete),
3. a pop-up menu interface to the lists of files, types, and directories, attached directly to the existing labels on the file selection Common Dialog Window,
4. the choice of pop-up menus and a Toolbar and/or the familiar Control Menu interface, each of which can be separately enabled or disabled.

## **Open Axess**

The last version of Open Axess was 2.10. Work on a new version of Open Axess has been underway since early in the year (1993). Once we saw the work of others for Common Dialogs, such as the 3-D controls Dynamic Link Library - CTL3D.DLL (Microsoft), Boomerang for Windows (shareware), and the Common Dialog Extensions (shareware), we decided it was time to release the new version.

The name change from **Open Axess** to **Rebound** is merely to distinguish our product from the dozens of other products, particularly for the PC market, that have the words **Open**, **Axess**, or **Access** in their name.

The idea for the File Operations came from the WordPerfect for Windows v. 5.1 Open Dialog window, which we used while developing the WordPerfect macro for Open Axess. The idea for Quick Open was primarily influenced by the Recall option on the File Menu in Windows Draw v. 3.0 from Micrografx, Inc.

Displays the Rebound list of Last Accessed and Permanent Files.

Displays the Rebound list of Last Accessed and Permanent Directories.

Displays the Rebound list of Last Accessed and Permanent Types.

Find a File.

Create and Change Directory to a new subdirectory.

Move the File currently selected in the File list box.



Copy the File currently selected in the File list box.

Delete the File currently selected in the File list box.

Display the Rebound Configuration Dialog Window.

Display the Rebound Preferences Dialog Window.

Display Windows Help on Rebound.

Display the selected File's last modified date/time and Read, Write, Archive attributes, if present.

## Quick Open

Some commercial applications, like Microsoft Word for Windows, Excel, and Micrografx Windows Draw, keep a list of the most recently used files right in the File Menu of the application. Other applications, like Micrografx Windows Draw, add a cascading menu entry to the File Menu which contains a list of recently used files. We thought this would be a nice feature for Rebound. The result is Quick Open.

The Quick Open option allows you to completely bypass the File Open Common Dialog Window to open a file by inserting a cascading menu entry entitled **Quick Open** in the application's File Menu. When selected, this option cascades to display the Rebound list of Last Accessed and Permanent files. Quick Open must be activated on a per-application basis using the Rebound Configuration Dialog Window.

If you use the Rebound Configuration Dialog Window to change Rebound's list of Last Accessed and Permanent files for an application that has Quick Open enabled, these changes will not be present on the Quick Open menu until the next invocation of the program. Similarly, if you enable Quick Open for a running application, you will have to exit and run the application again for Quick Open to take effect.

Although Quick Open does not require you to select a file from the File Open Common Dialog Window, Quick Open must call COMMDLG.DLL to open the file. This means that you will see the File Open Common Dialog Window appear briefly on the screen before the file opens. (Our attempts to prevent the dialog display were unsuccessful.)

One other point: Quick Open works beautifully on the applets provided with Windows (such as Notepad, Write, Paintbrush, etc.). Other applications, especially those that provide their own capability to modify menu contents and structure (such as Word for Windows and Excel), don't take kindly to another process trying to modify their menus. You will have to experiment with individual applications to see if Quick Open can be used.

## Rebound-Enabled Common Dialog

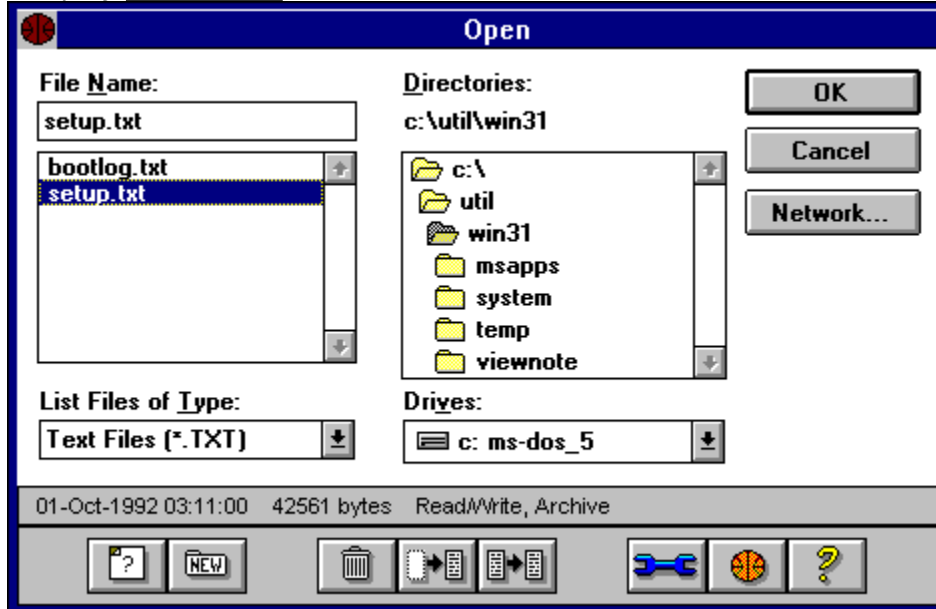
The primary functionality provided by Rebound, that is, lists of Last Accessed and Permanent Types, Files, and Directories, is now accessible via pop-up menus attached to the existing labels for **List Files of Type:**, **File Name:**, and **Directories:**, respectively, in file selection Common Dialog Windows. These pop-up menus cannot be disabled when Rebound is running.

Rebound can be configured to display the lists of Last Accessed and Permanent Types, Files, and Directories, and other Rebound Options from the familiar Control Menu interface provided by Open Axxess. Additionally, Rebound Options can be accessed from the Option Buttons Toolbar rather than (or in addition to) the Control Menu of a file selection Common Dialog Window. Use the Rebound Preferences Dialog Window to set these display options.

**Show Me**



This screenshot shows a file selection Common Dialog Window with all of the Rebound display Preferences enabled.



## The REBOUND.INI File

Rebound maintains an initialization file called REBOUND.INI. This file contains your settings for Last Accessed and Permanent Types, Files, and Directories for each application that uses Common Dialog Windows for file selection. REBOUND.INI also contains global settings as described below. When you first use Rebound after installation, the REBOUND.INI file does not exist and is created in your Windows directory.

Types, Files, and Directories selections for an application can be maintained from within the application using the Rebound Configuration Dialog Window (available from either the Control Menu or the Toolbar of a file selection Common Dialog Window when Rebound is enabled). The REBOUND.INI file can also be viewed and edited using a text editor such as Notepad. We recommend that you exit Windows after using Rebound for the first time prior to editing REBOUND.INI in order to ensure that the file is written completely. Note that changes made to REBOUND.INI using an editor will not take effect until you close Rebound and restart it.

An example of the contents of the REBOUND.INI file is shown below. The application name is shown delimited by square brackets [], followed by the Rebound settings for that application. The [Rebound] heading stores the following values set from the Rebound Preferences Dialog Window:

### MaxList

stores the current setting for the **Maximum Number of Entries** field

### SystemMenu

stores the current setting for the **Show System Menu** checkbox

### Properties

stores the current setting for the **Show File Properties** checkbox

### AppIcon

stores the current setting for the **Show Program Icon** checkbox

### Button Operations

stores the current setting for the **Show Operation Buttons** checkbox

The LD, LT, and LF prefixes denote the entries for last accessed directories, types, and files, respectively. The PD, PT, and PF prefixes denote entries for Permanent selections.

```
[Rebound]
MaxList=5
SystemMenu=N
Properties=Y
AppIcon=Y
Button Operations=Y
```

```
[Notepad]
```

Advanced Open=Y  
Open Menu=&Open...  
LD04=  
LD03=c:\util\win31\  
LD02=d:\lang\bc\include\  
LD01=c:\borlandc\doc\  
LD00=c:\misc\rmw\nets\  
LF04=c:\borlandc\doc>manual.rw  
LF03=c:\borlandc\doc\custcntl.rw  
LF02=c:\borlandc\doc\bwccstyl.rw  
LF01=c:\borlandc\doc\bwccapi.rw  
LF00=c:\misc\rmw\nets\oomethod.  
LT04=\*.txt  
LT03=\*. \*  
LT02=\*.hpj  
LT01=\*.rw  
LT00=\*.  
PD04=  
PD03=  
PD02=c:\util\win31\  
PD01=d:\usr\westman\  
PD00=c:\misc\axess\  
PF04=  
PF03=c:\util\win31\axess.ini  
PF02=c:\util\win31\win.ini  
PF01=c:\util\win31\setup.txt  
PF00=c:\misc\axess\axess.hpj  
PT04=  
PT03=  
PT02=  
PT01=\*.ini  
PT00=\*.txt

As with REBOUND.EXE, RBNDLIB.DLL, and REBOUND.HLP, the REBOUND.INI file must be located in your Windows directory.

## Rebound Preferences

Global Rebound settings are stored in REBOUND.INI, and are set using the Rebound Preferences Dialog Window. This dialog can be invoked in any of the following ways:

1. Single-click on the Rebound icon on the Windows desktop (if enabled) and select the **Preferences** menu item, or
2. If the Rebound Icon appears instead of the default Control Menu icon on a file selection Common Dialog Window, select the **Options** menu item, and then select the **Preferences** menu item on the the Options sub-menu, or
3. If the Rebound Operations Buttons toolbar is enabled, click on the Preferences button.

The following preferences can be individually enabled or disabled:

### Show System Menu

When checked, enables the replacement of the default Control Menu icon with the the Rebound icon on the Common Dialog Window for file selection.

### Show File Properties

When checked, Rebound resizes any subsequent file selection Common Dialog Window to include the display of a Toolbar containing the following file properties for a selected file:

- the date and time the file was last modified,
- the file size in bytes, and
- the following file attributes, if they are set: Read, Write, and Archive.

### Show Program Icon

When checked (and Rebound is running), enables both the display of the Rebound program icon on the Windows desktop and the appearance of Rebound in the Windows Task List. When unchecked, the only way to determine if Rebound is running is the appearance of Rebound Features in a Common Dialog Window. If both the **Show System Menu** and **Show Operations Buttons** options are disabled, the REBOUND.INI file must be edited to enable the Show Program Icon option.

### Show Operation Buttons

When checked, Rebound resizes any subsequent file selection Common Dialog Window to include the display of a Toolbar containing Rebound Operation buttons.

### Maximum Number of Entries

## Configuring Rebound

When Rebound is enabled, it can be configured from a file selection Common Dialog Window using the Options menu option of the Control Menu, if enabled, or from the Configure button on the Toolbar, if enabled, depending on the current Preferences settings.

The Configuration Window displays the following settings for the current application:

### **Access** Type, File, or Directory

Select the list of entries which you wish to view or edit.

### **Mode**

**Last Accessed** The last few Types, Files, and Directories that you selected within any given application. These selections are maintained in the REBOUND.INI file, located in your Windows directory. If you select an item from a Last Accessed list, Rebound moves that item to the top of that Last Accessed list.

### **Permanent**

### **Quick Open Enabled**

When checked, enables the Quick Open option for the current application.

### **Open Menu Text**

Quick Open needs to know the exact menu text of the application's File Open command. In most applications, this is "Open...", but some applications deviate from this standard. The Open Menu Text field allows you to configure Quick Open for those applications that do not use the standard menu text.

### **Entry List**

Displays the list of entries for the current settings of **Access** and **Mode**. If more than 5 entries exist, scroll bars are added to the list.

### **Buttons**

- OK** Accepts the current dialog window settings.
- Keep** Allows you to designate the selected entry from the Last Accessed list of Types, Files, or Directories in the Rebound Configuration Dialog Window as a Permanent entry for the current application.
- Remove** Allows you to remove the selected Type, File, or Directory from the list of Last Accessed Types, Files, or Directories respectively. You would typically Remove an entry after you have made it Permanent.
- Purge** Removes all entries from the Last Accessed list of Types, Files, or Directories in the Rebound Control Menu options for the current application.

## **Files Contained in This Package**

The following files are contained in the archive file REBOUND.ZIP:

1. REBOUND.EXE the Rebound executable program file
2. REBOUND.HLP the Rebound Windows Help file
3. RBNDLIB.DLL the Rebound Dynamic Link Library
4. BWCC.DLL the Borland Windows Custom Controls Dynamic Link Library (required)
5. README.TXT a text file containing instructions and revision history

To extract these files, use UNZIP or another file extraction utility that reads ZIP files. Please note that the Rebound Windows initialization file REBOUND.INI is created in your Windows directory the first time you use Rebound.

## Registering Rebound

Rebound is Shareware, and is Copyright 1993 by Steven Gutz and Randy Westman, all rights reserved. You may use Rebound for thirty days to evaluate it. If you think Rebound is useful and you wish to continue using it, please print & fill out the [Registration Form](#) and send it with your payment of \$20 (U.S.) to the address on the form. Registered Users of Open Access V. 2.10 or earlier may register Rebound for the upgrade fee of \$5 (U.S.). A postal money order is preferred, payable to Steven Gutz.

Alternatively, CompuServe members can use their credit card to register Rebound using CompuServe's online Shareware Registration Database. GO SWREG and follow the instructions there to register shareware. The Registration ID is not known at this time.

Sorry, we cannot directly accept credit card payments.

When you pay your shareware fee, we'll show you how to use Rebound in Windows 3.1 applications that do not use Common Dialogs, but can register Dynamic Link Libraries (DLLs) and call their functions.

If you wish to obtain a site license for Rebound, contact the authors for arrangements.

We strive to make the latest version of Rebound available as follows:

1. on the Internet via anonymous ftp at <ftp.cica.indiana.edu> (129.79.20.84) in either `pub/pc/win3/uploads` or `pub/pc/win3/util` as `rbnd10.zip`.
2. on CompuServe in the Advanced Windows forum (GO WINADV) in the File Utilities Library as `rbnd10.zip`. Do a search for the keyword REBOUND.

To contact us, you can write, or send CompuServe and/or Internet electronic mail to one of the addresses shown in the About Rebound Window.

Steven Gutz



Randy  
Westman



## Rebound 1.0 Registration Form

Send \$20 (U.S. funds - postal money order preferred) with this completed form to:

Steven Gutz

R.R. #5

Pembroke, Ontario

CANADA K8A 6W6

Name: \_\_\_\_\_

Address: \_\_\_\_\_

\_\_\_\_\_

Province/State: \_\_\_\_\_

Country \_\_\_\_\_

Postal Code \_\_\_\_\_

Internet Address (optional): \_\_\_\_\_

CompuServe ID (optional): \_\_\_\_\_

Your signature below acknowledges the following:

### USERS OF REBOUND MUST ACCEPT THIS DISCLAIMER OF WARRANTY:

Rebound is supplied 'as is'. The authors disclaim all warranties, expressed or implied, including, without limitation, the warranties of merchantability and of fitness for any purpose. The authors assume no liability for damages, direct or consequential, which may result from the use of Rebound. In any case the maximum liability of the seller will be limited exclusively to product replacement or refund of purchase price."

Your signature \_\_\_\_\_

Thank you for registering Rebound !

Steven Gutz & Randy Westman



## **Control Menu**

If present for a window, the Control-menu (sometimes called the System Menu) is located in the upper-left corner of that window. The Control Menu typically contains menu options for sizing, moving, and closing the window. When an application uses the Common Dialog Dynamic Link Library COMMDLG.DLL to perform a file selection, Rebound can be configured to replace the default Control Menu Icon with the Rebound icon and adds Rebound Features to the Control Menu.

## **Permanent**

An entry in the list of Types, Files, or Directories that is always present for the current application. Permanent Types, Files, and Directories are denoted by a leading **P** in the Rebound Control Menu options. The Permanent attribute is assigned from the Rebound Configuration Dialog Window. The maximum number of Permanent Types, Files, and Directories you can specify for each application is governed by the value of Maximum Number of Entries.

Rebound v. 1.0 © 1993 by Steven Gutz and Randy Westman. All rights reserved.

## Maximum Number of Entries

The maximum number of items in any Rebound list of Last Accessed or Permanent Types, Files, or Directories is set to 5 by default and can be changed by editing the value of **Maximum Number of Entries**: in the Rebound Preferences Dialog Window. You can use the controls provided to increment or decrement the displayed value, or select the value and key in a new one. The minimum value is 1 and the maximum value is 50.

Since Windows does not support vertically scrolling menus, the number of items in an Rebound list that can be displayed depends on the resolution of your computer monitor.

Note that you can edit the REBOUND.INI file directly and change the value of **MaxList** (under the keyword [REBOUND]), but the change will not take effect until you restart Rebound. We recommend that you use the Rebound Preferences Dialog Window instead.

