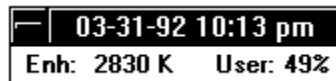


Fres Version 1.31

Fres is a little Windows 3.1 program designed to display update vital session information. Fres displays and updates the current date, time, windows mode, free memory and free system resources (the percentage of space remaining in the User or GDI heaps -- whichever is less). It will not run in real mode, but it should run under Windows 3.0 if the *toolhelp.dll* is installed.

The display looks something like this:



Mode Memory Heap %

Description

Mode	The Windows Mode Enh -- Enhanced 386 mode Std -- Standard mode
Memory	The remaining amount of system memory. This may total more than the physical amount of storage in the machine in enhanced mode.
Heap	The name of the limiting windows heap User -- the USER.EXE heap GDI -- the GDI.EXE heap By 'limiting' we mean the heap which has the least free memory. These 2 heaps comprise what Windows calls 'Free System Resources'.
%	The amount of space remaining in the heap.

Three items are added to the Fres System menu:

About	Displays information about Fres.
Stay on Top	Causes Fres to remain on top of all other windows (except when Clock is on top). The current state of this item is retained across window sessions.
Save Location	Causes Fres to record its current screen position. This location is used to position Fres the next time the program is run.

Fres is copyrighted software, but you may use it and distribute the program freely. Please report any problems, comments or suggestions for Fres to:

Jamie O'Connell **CIS: 73030,315**
191 Park Dr. #44
Boston, MA 02215

DISCLAIMER

This program is provided without any warranty, expressed or implied, including but not limited to fitness for a particular purpose.