

LPR for Windows 95
TCP/IP Printing
User's Guide

First Edition

Printed in Taiwan, R.O.C.



RECYCLABLE

Copyright Statement

Copyright ©1997 D-Link Corporation

No part of this publication may be reproduced in any form or by any means or used to make any derivative such as translation, transformation, or adaptation without permission from D-Link Corporation/D-Link Systems Inc., as stipulated by the United States Copyright Act of 1976.

Trademarks

D-Link is a registered trademark of D-Link Corporation/D-Link Systems, Inc.

All other trademarks belong to their respective owners.

Limited Warranty

The software and reference material are provided “as are,” without warranty as to their performance, merchantability or fitness for any particular purpose. D-Link Corporation/D-Link Systems, Inc. reserve the right to revise this publication and to make changes to its contents at any time, without obligation to notify any person or entity of such revisions or changes.

Setting up Windows 95 TCP/IP Printing

The D-Link network print server can provide print services to TCP/IP networks using the `lpr/lpd` network printing protocol. Most UNIX systems are capable of supporting `lpd`, as is Windows NT.

D-Link's LPR for TCP/IP Printing client gives Windows 95 workstations the ability to print using the `lpr/lpd` printing protocol. Though it is possible to print to D-Link network print servers from Windows 95, this capability is useful if primarily administer your network from UNIX systems, or if you want to print from workstations that are only accessible through IP routing.

Installing the LPR for TCP/IP Printing Client

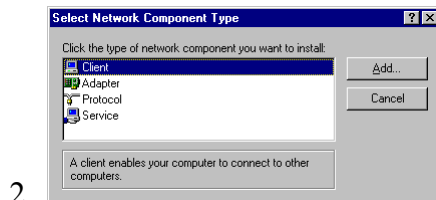
Before your Windows 95 workstation can print using the `lpr` protocol, you will need to install the D-Link client program, as follows:

1. Make sure that you have installed the TCP/IP protocol, and have properly configured the Windows 95 TCP/IP settings. You can install the protocol from the Network control panel if necessary.
2. From the **Start** menu, choose the **Settings** submenu, then the **Control Panel** item within it. Windows will display the Control Panel folder.

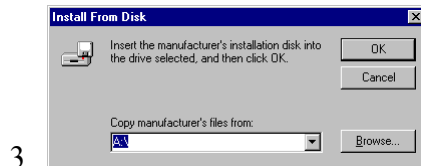
3. Double-click on the Network icon in the Control Panel folder.



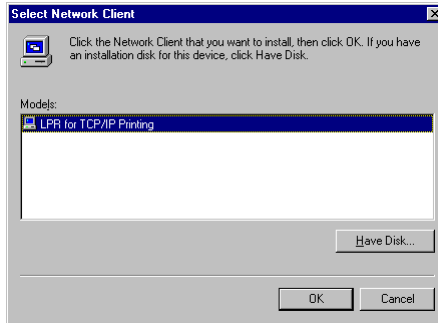
4. Click on the **Add...** button on the **Configuration** tab.
5. Windows will ask for the type of component to add. Select **Client** and click **Add...** to continue.



6. When Windows asks you to select a network client, click the **Have Disk...** button.
7. Insert the LPR client diskette in your computer's floppy drive (A: or B:), enter the proper pathname, and click **OK**.

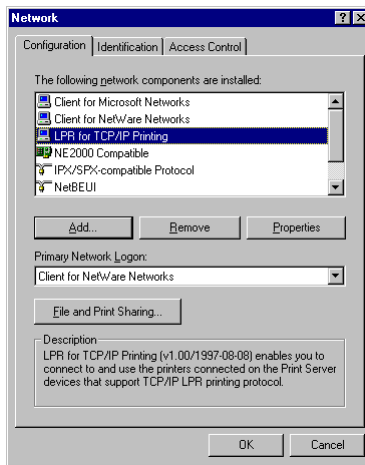


8. Select the LPR for TCP/IP Printing client and click **OK**.



4

9. Windows will copy the necessary files, and return to the Network dialog. Click **OK** to let Windows restart.



5

Adding LPR Printer Ports

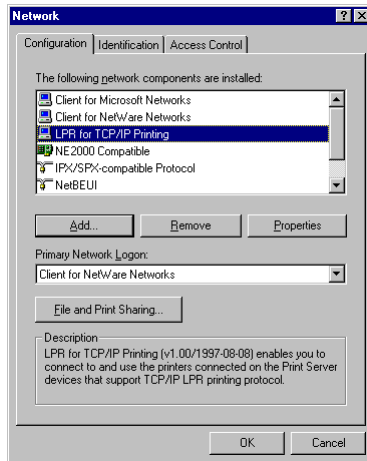
Once you have installed the client, and have enabled TCP/IP printing for the D-Link network print servers, then you need to add a printer port for each printer you will be printing to using the `lpr/lpd` protocol. To add a printer port,

10. From the **Start** menu, choose the **Settings** submenu, then the **Control Panel** item within it. Windows will display the Control Panel folder.

11. Double-click on the **Network** icon in the Control Panel folder.

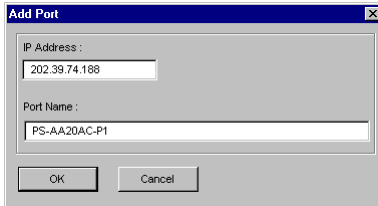


12. Choose the LPR for TCP/IP Printing client and click the **Properties** button.



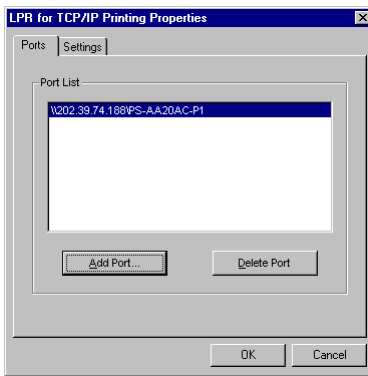
13. Click the **Add Port...** button to add a new `lpd`-accessible printer port.

14. Enter the IP address of the D-Link print server and the name of the printer port that you will be printing to, then press **OK**.



8

15. Click **OK** to leave the LPR for TCP/IP Printing Properties window.



9

Printing from Windows 95

After you have added the necessary printer ports, you can add a printer device for printing to the port. To enable printing to an lpr-accessible printer port from Windows 95,

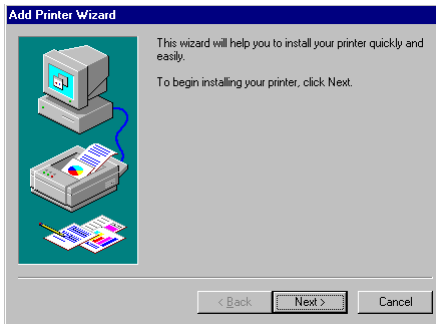
16. From the Start menu, choose the Settings submenu, then the Printers item within it. Windows will display the Printers folder.

17. Double-click on the Add Printer icon in the Printers folder.



10

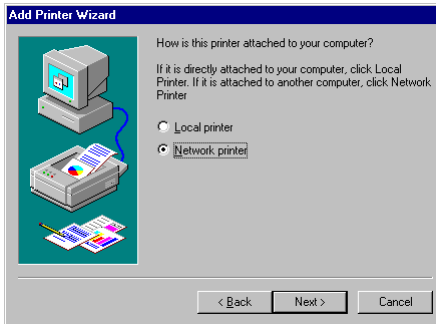
11 Windows will start the Add Printer Wizard.



12

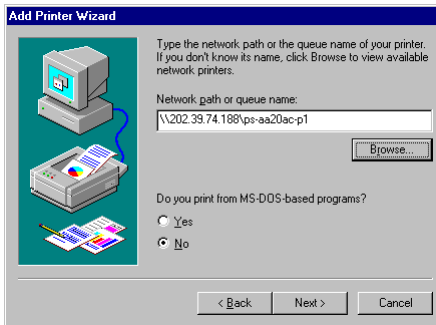
13 Click the **Next >** button to continue to the next screen.

18. Choose the **Network Printer** selection and click the **Next >** button to continue.



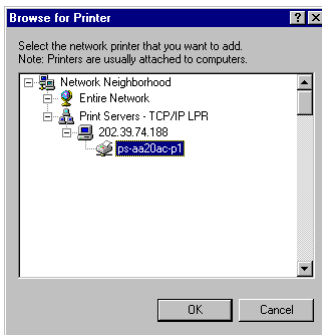
14

19. Enter the name of the port, as displayed in the LPR for TCP/IP Printing Port List.



15

16 Alternatively, you can click **Browse...** and locate the printer port. TCP/IP printing ports are located under the Entire Network icon, within the Print Servers - TCP/IP LPR icon.



17

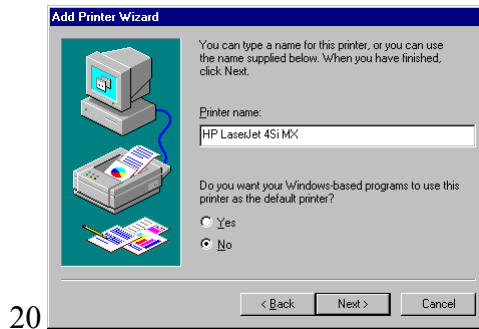
18 Press **OK** when you have located the proper printer port.

19 Click **Next >** to continue to the next step.

20. At this point Windows will ask you to choose the correct printer driver for the printer. Choose your printer's make and model from the list, or use the driver disk included with the printer. When you have chosen the correct printer, click **Next >** to continue.

21. Windows will then ask for a name for the new printer, and ask whether or not you want to set the printer as the

Windows default printer. Click **Finish** (or **Next >**) to continue.



22. Windows may ask you whether or not you wish to print a test page to make sure that the printer will work correctly. When the test page is done printing, you will be asked whether or not the test page printed.

Setting TCP/IP Printing Settings

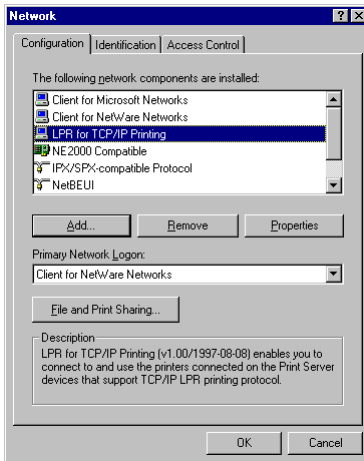
The `lpr` client's Properties dialog allows you to change several of the client's settings. To change these settings,

23. From the **Start** menu, choose the **Settings** submenu, then the **Control Panel** item within it. Windows will display the Control Panel folder.

24. Double-click on the **Network** icon in the Control Panel folder.

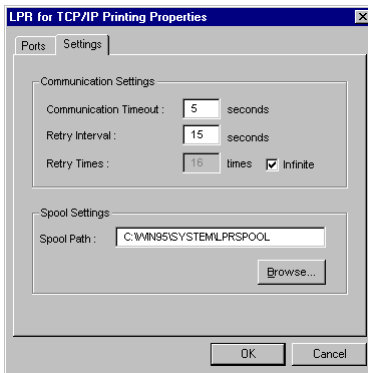


25. Choose the LPR for TCP/IP Printing client and click the **Properties** button.



22

26. Click on the Settings tab to access the `lpr` client settings. Change the settings as necessary, and press **OK** to let the changes take effect.



23

The parameters are as follows:

- ◆ **Communication Timeout** Determines how long, in seconds, the system will wait before determining that it has lost connection with `lpr`/`lpd` print servers.

- ◆ **Retry Interval** Determines how long, in seconds, the system will wait before retrying a lost connection.
- ◆ **Retry Times** Determines how many times the system will retry a lost connection with an `lpr/lpd` print server. If **Infinite** is checked, it will retry indefinitely.
- ◆ **Spool Path** Gives the directory path where the system will temporarily store `lpr/lpd` print server job files.