

How to test Preboot Execution Environment (PXE)?

1.Environment Request:

You should install NT server (4.0 SP3 or later)

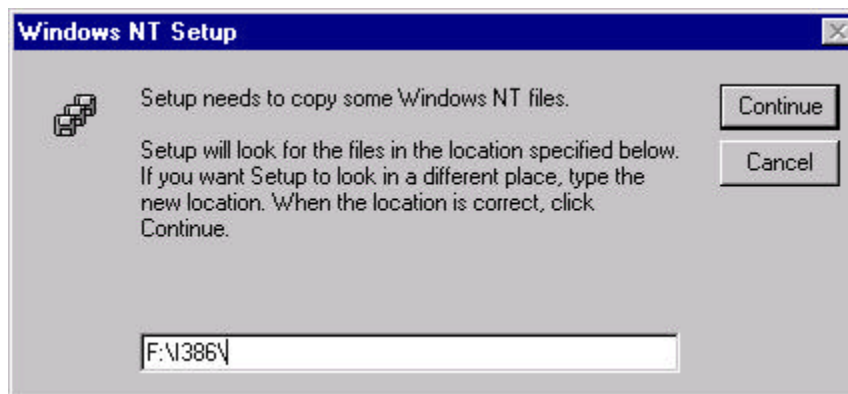
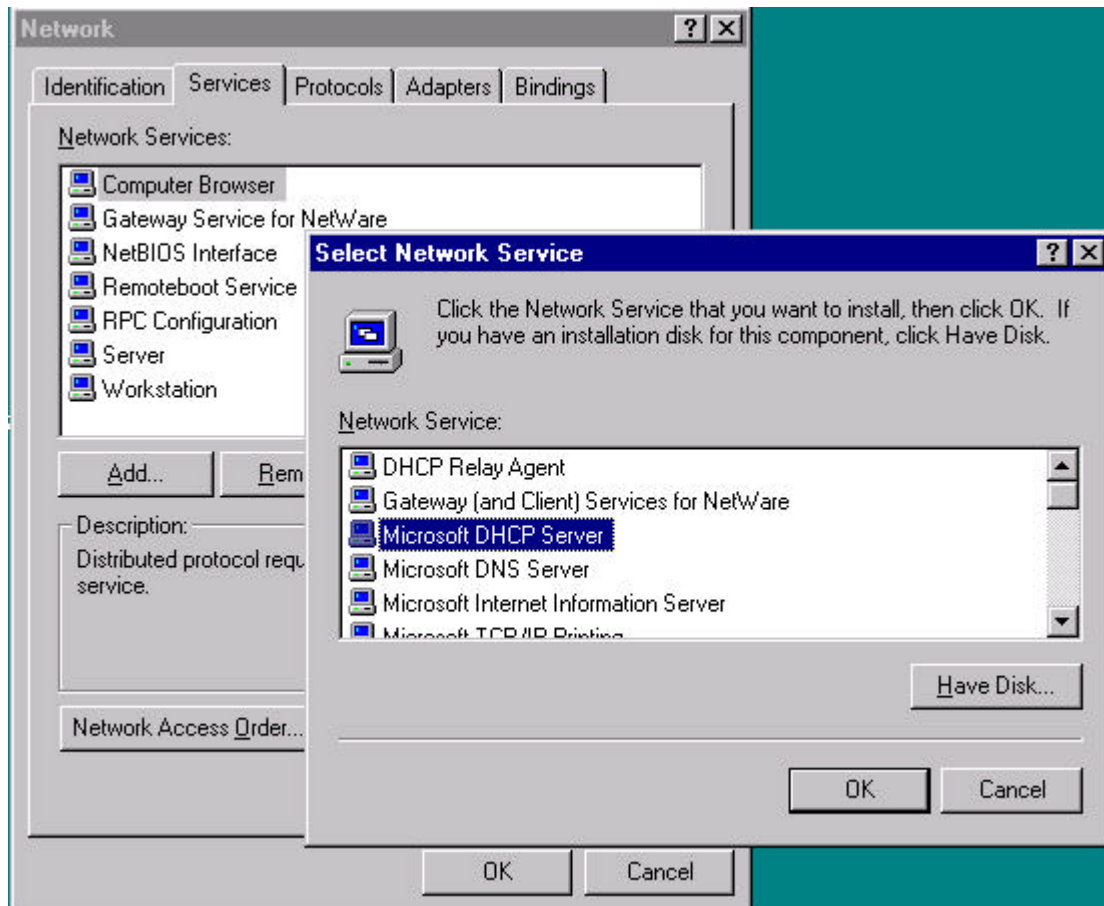
Install TCP/IP and Assign a static IP for server

Ensure the GUEST account is enable

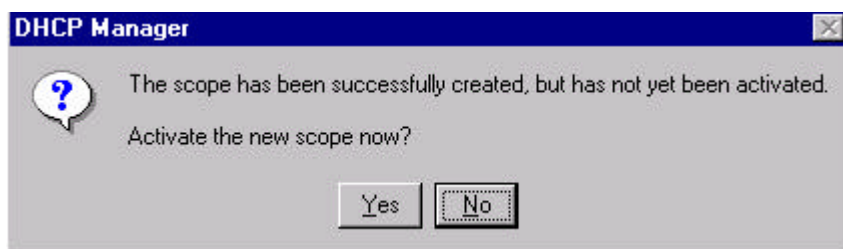
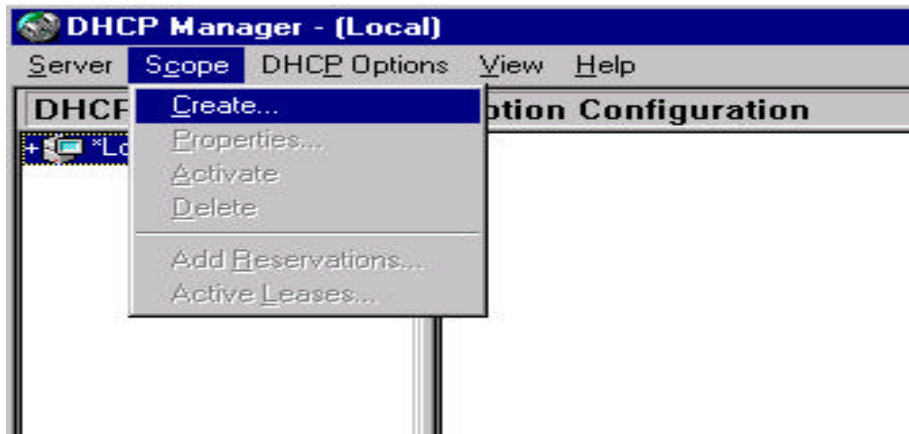
Get PDK from Intel <http://developer.intel.com/ial/WfM/tools/pxepdk20/index.htm>

2.Setup DHCP Service

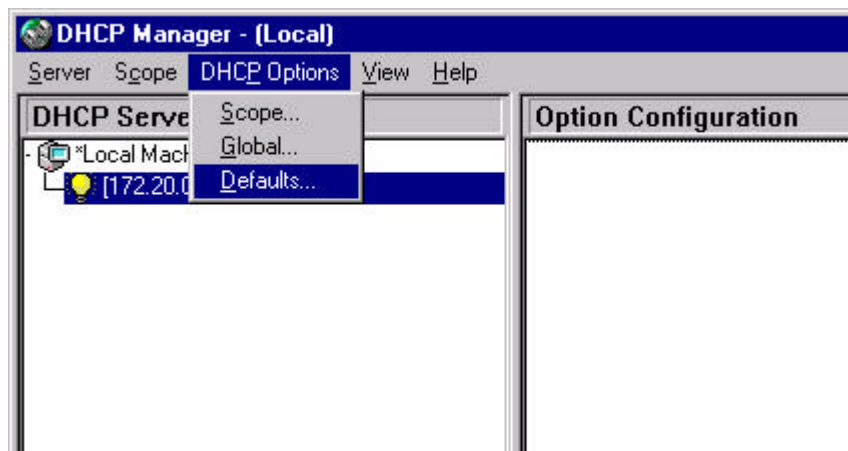
Add DHCP service on NETWORK PANEL



Start → Programs → Administrative Tools → DHCP Manager to create a range of scope.

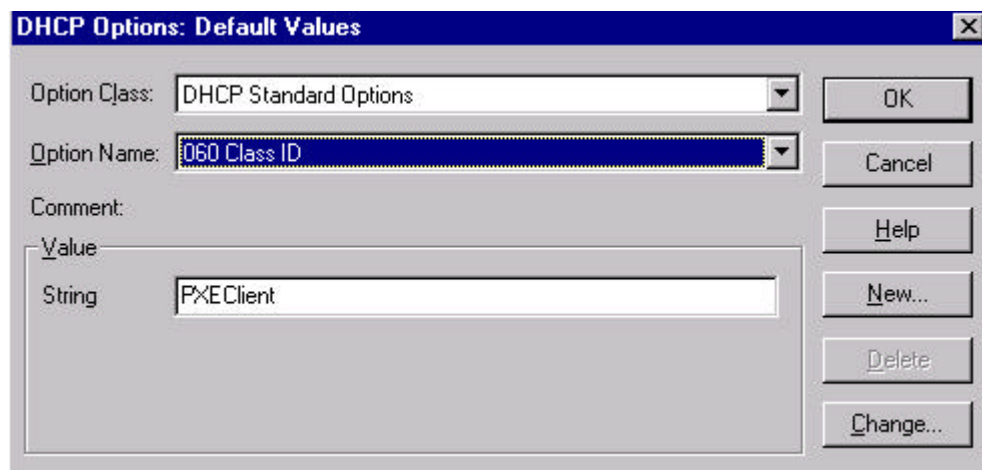
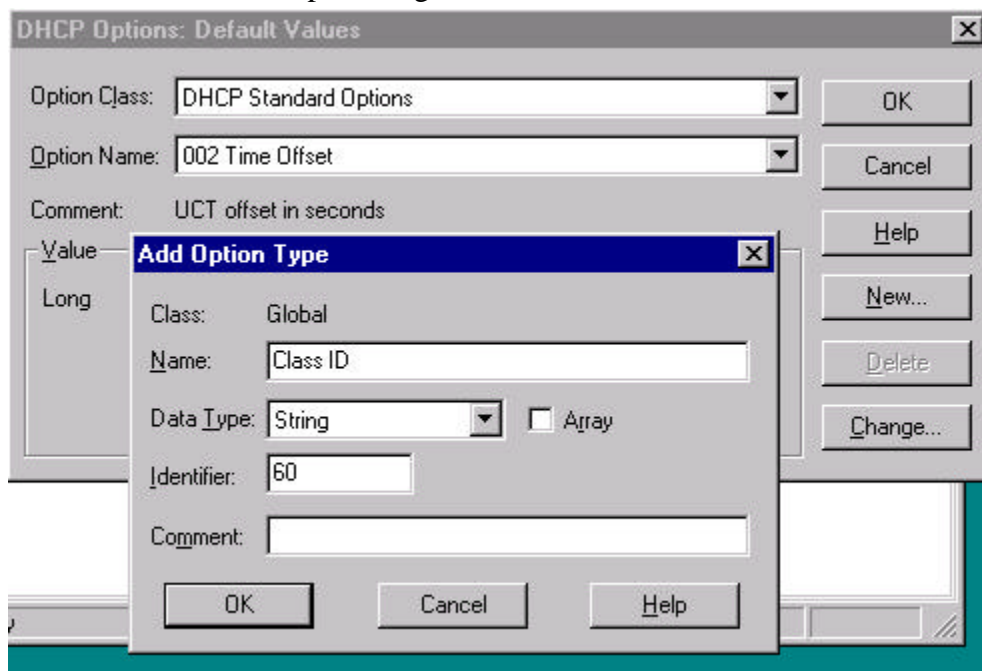


3. If PXE service and DHCP server install on same machine, you MUST add this tag to your server.

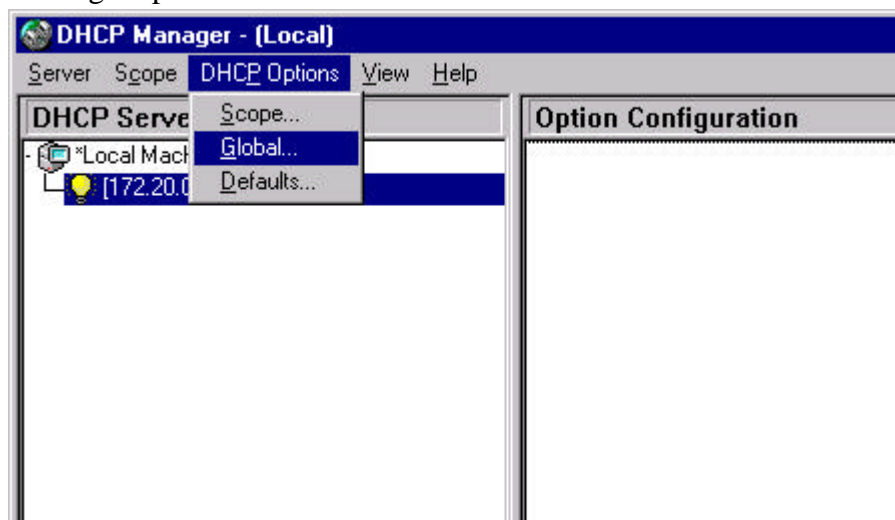


Choose DHCP Options → Default to setting.

4. Choose NEW PXE Option Tag.



5. Assign Option 60 to Global.



6. Create the boot files: APITEST.1 and DOSUNDI.1

Create TWO 1.44 DOS format boot disk.

Disk 1 : Label APITEST

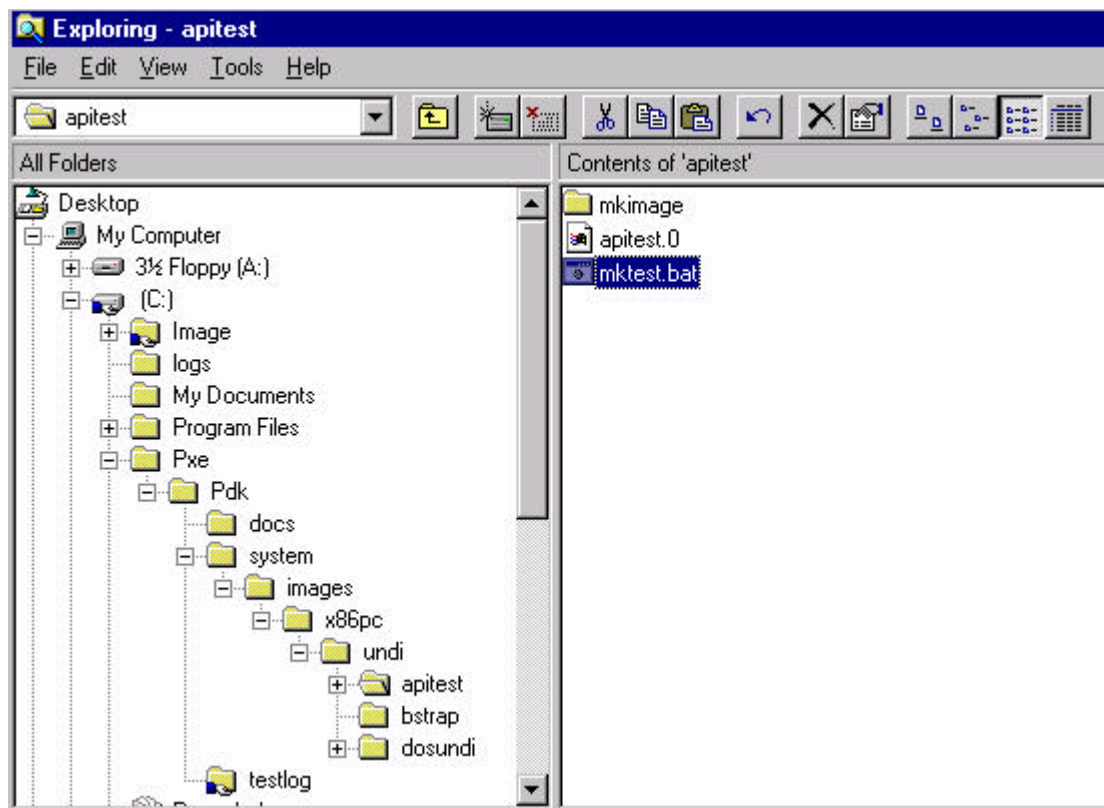
Copy HIMEM.SYS, RAMDRIVE.SYS, MORE.COM and FC.COM into disk 1.

Disk 2: Label DOSUNDI

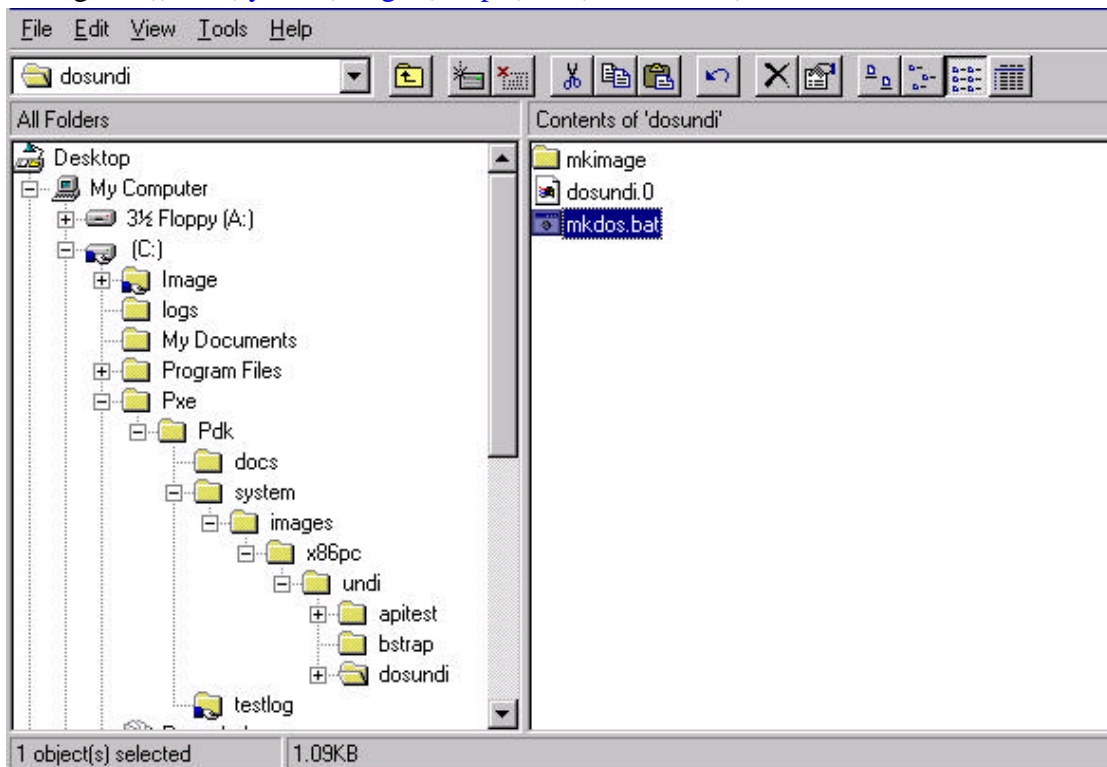
Copy MORE.COM into disk disk 2.

Change to <\\PDK\system\images\x86pc\undi\APITest> and run “mktest.bat”

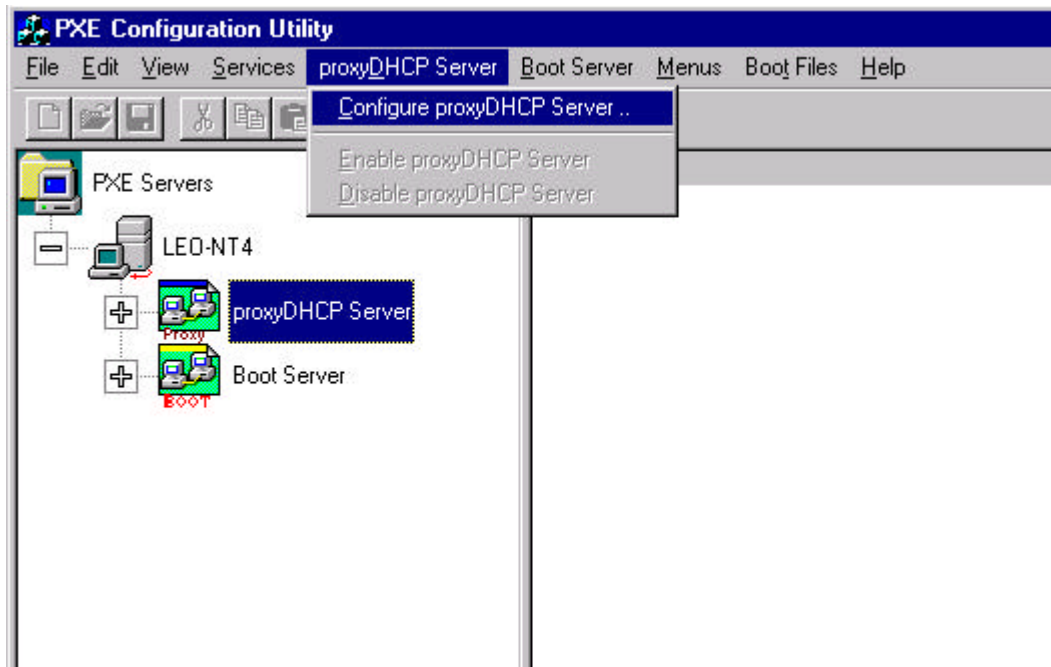
PS. When system is installing, it will point the directory of NT CD . you should point to “root”. If you point to “\i386”, system will CANNOT find files.



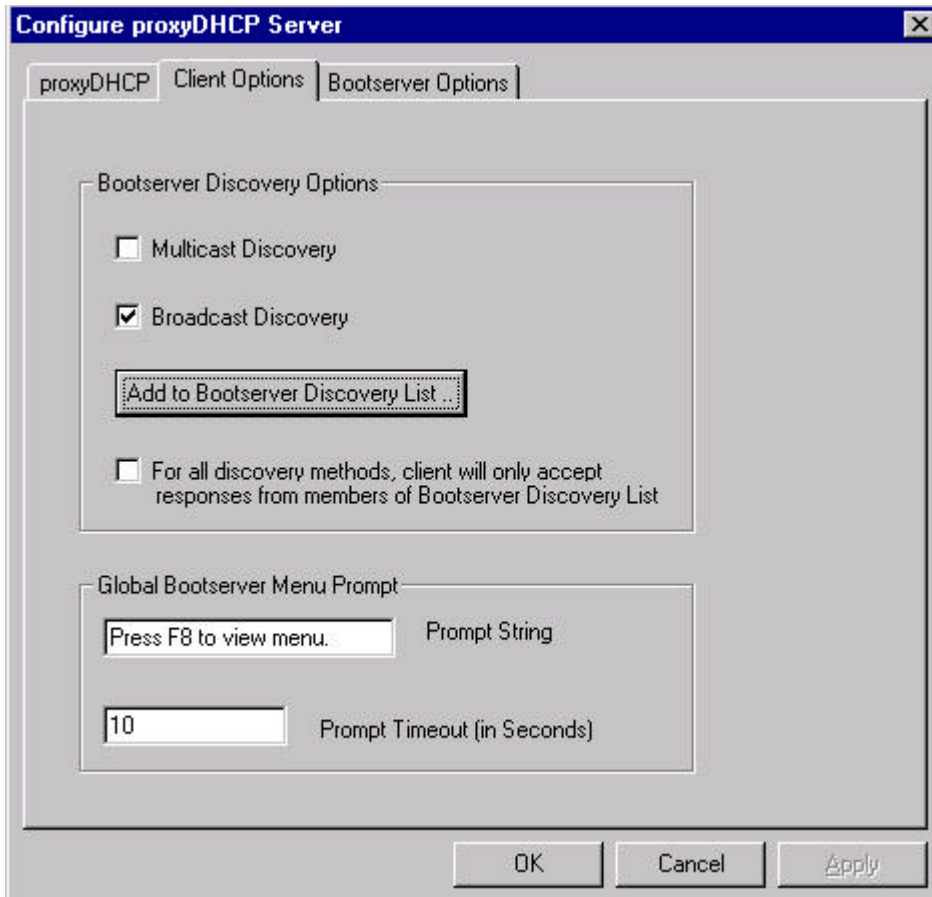
Change to [\\PDK\system\images\x86pc\undi\DOSUNDI](#) and run “mkdos.bat”



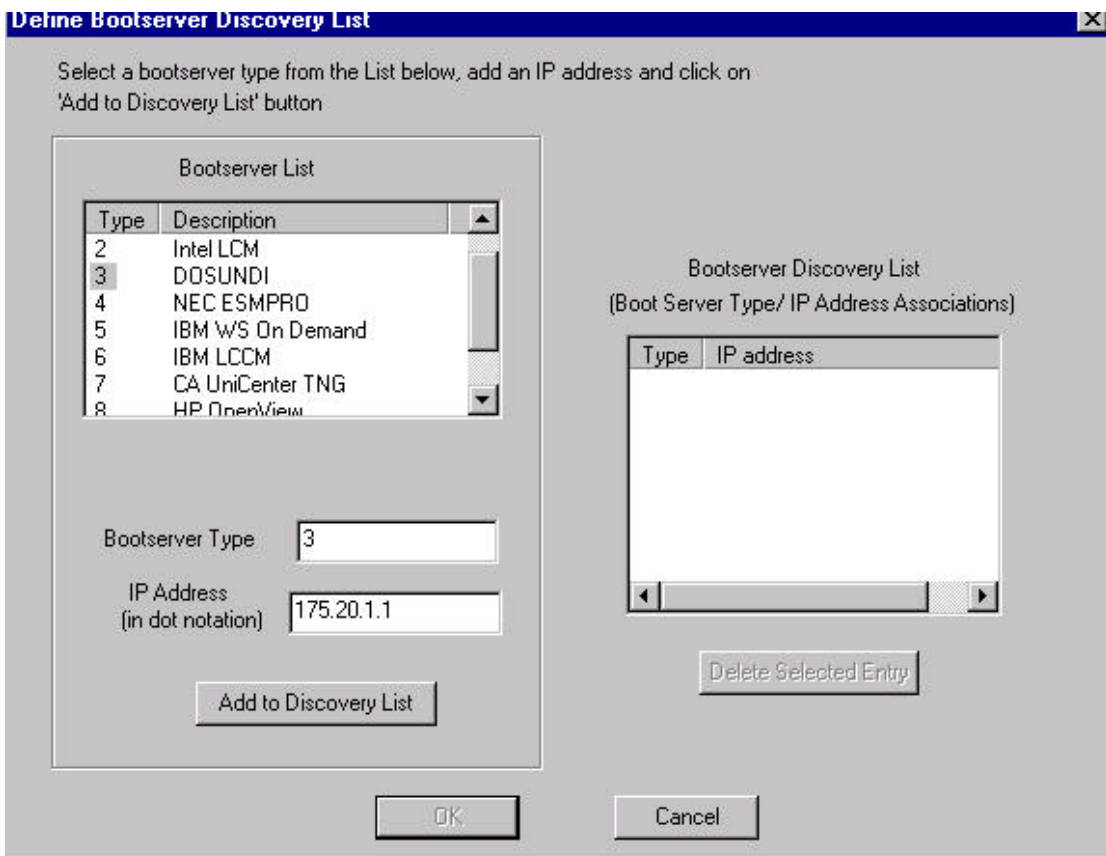
7. Config proxy DHCP Server



8. Add Bootserver List



9. Add type 3 and 65535



Define Bootserver Discovery List [X]

Select a bootserver type from the List below, add an IP address and click on 'Add to Discovery List' button

Bootserver List

Type	Description
1	WinNT
2	Intel LCM
3	DOSUNDI
4	NEC ESM PRO
5	IBM WS On Demand
6	IBM LCCM
7	CA UniCenter TNG

Bootserver Type:

IP Address (in dot notation):

Bootserver Discovery List
(Boot Server Type/ IP Address Associations)

Type	IP address
3	175.20.1.1
65535	175.20.1.1