

Asgard X-Win



© Asgard Software 1992-1995, Fax: +44 (0)1865 771461, E-Mail: 100113.431@compuserve.com

The main features of Asgard X-Win includes the option to switch between simple and cryptic clues onscreen, the ability to create and edit crosswords as well as solving them, the ability to save crosswords as templates, password protection, user definable colours and the possibility to have squares explode randomly for extra tension.

Main window...

Solving crosswords...

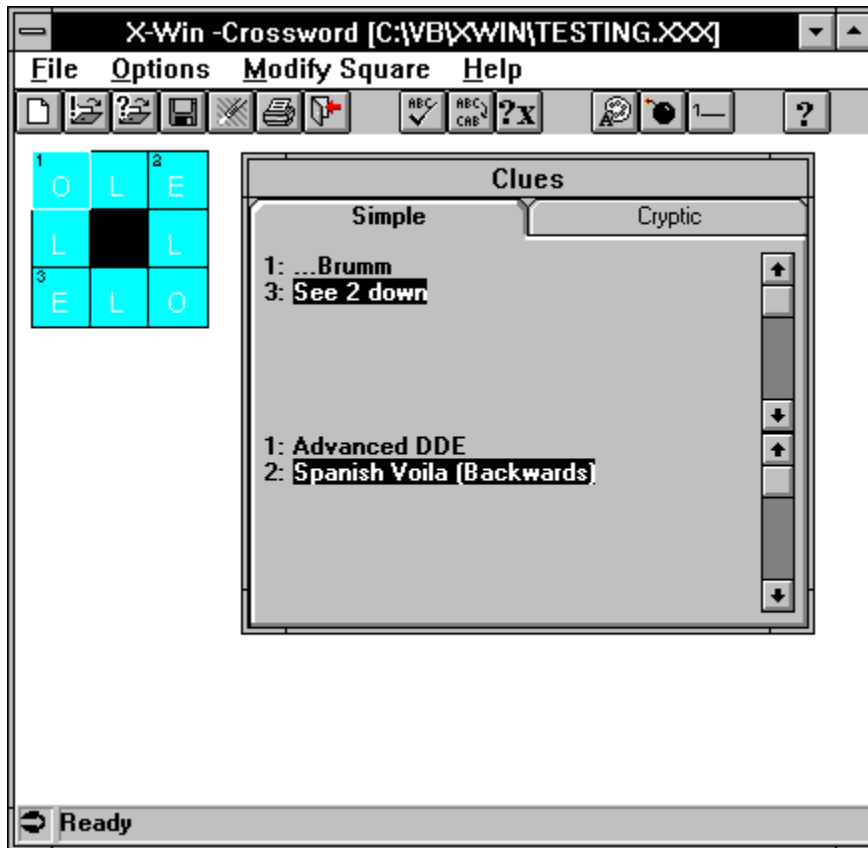
Creating/Editing crosswords...

Configure Asgard X-Win...

Balloon Help

REGISTERING ASGARD X-WIN...

Asgard X-Win Main Window



Creating a new Crossword

As well as solving existing crosswords you can also create your own crosswords and distribute them. To do so follow the steps below.

Select the **File/New** menu (Short cut key: **Ctrl+N**). A dialogue box like the one below will be displayed. Fill in the fields as required and click on OK.

X-Win - New Crossword

Please enter the information needed to build the new crossword. If you do not fill in all boxes the defaults will be used.

Squares Across: 10 x Squares Down: 10

Creator's Name: Unknown Password:

Descriptive name for Crossword: Crossword

Recommended time in minutes: 30

Level (1 - 10): 5

Save as Default Cancel OK

Once you are back in the main crossword window you need to:

Enter the answers

This is done by typing in the individual characters in the usual way. To change a previously entered letter simply overtype it (Asgard X-Win is ALWAYS in overtype mode).

Mark the squares which have a number and fill in their clues

Click on the square which will have a number and clue(s). A menu will pop up, you have two options. If you number the squares consecutively you select the first choice, **Number this square no: x** (x is the next consecutive number). The square will be marked with the number and a small dialogue box will come up and here you enter the clues, simple and/or cryptic. (Short cut key: **F2**)

Add clues

Simple

1 Across

1 Down

Cryptic

1 Across

1 Down

Cancel OK

If you need to enter a non-consecutive number click on the square and select the **Number this square no...** option. A small dialogue box come up and you can enter the correct number here. Afterwards you enter the clues as above. (Short cut key: **F3**)

If you need to edit a previously entered clue, click on the square and select **Edit Clues** from the

pop up menu. (Short cut key: **F4**)

Block out squares

To make a square black, select the square with the mouse. From the menu which pops up select **Make Square Black**. (Short cut key: **F5**)

If you reselect this menu when the square is already black the square will be clear again, i.e. it is possible to enter letters in it again (the menu will have a check mark next to it).

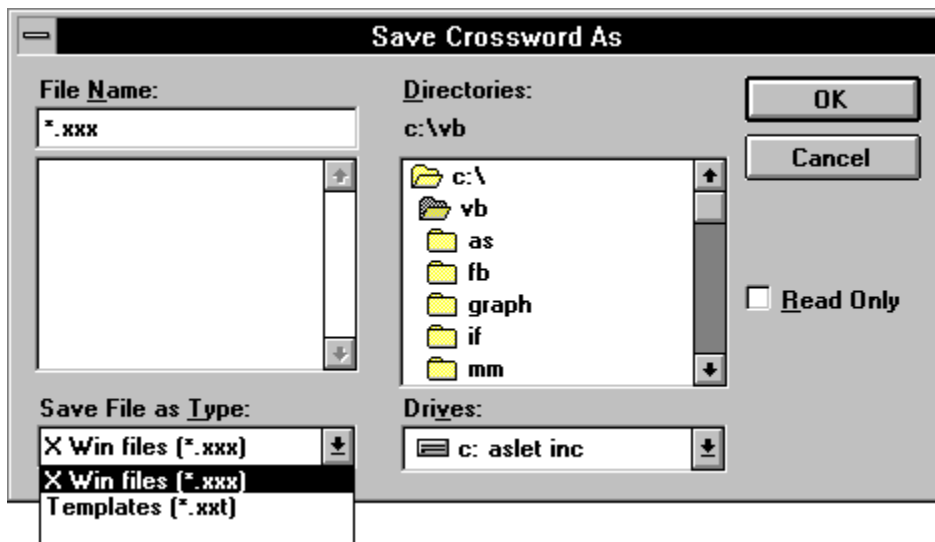
Add a stop line to the right or bottom of a square

Sometimes you may want to add a thick line to the right or bottom of a square. To do this select the square with the mouse. From the menu which pops up select **Add black line right/bottom** as required. (Short cut key: **F6/7**)

If you reselect this menu when the square already has a black line this will turn the black line off (the menu will have a check mark next to it).

Save the crossword

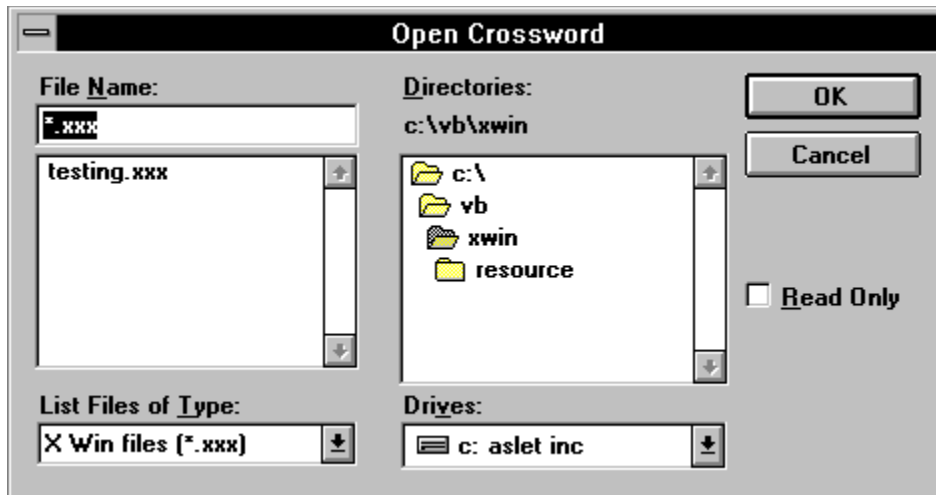
Asgard X-Win can save a crossword as either a template or a standard crossword. A template is a 'skeleton' crossword where you can set up black squares, no of squares etc. and re-use for new crosswords if you often create similar crosswords.



Select the **File/Save** menu (short cut key: **Ctrl+S**). A dialogue box will come up, enter a file name for the crossword (max. 8 letters) and select the file type from the box at the bottom of the box. Then click on **OK**.

Solving Crosswords

To solve a crossword you first need to open it. Select **File/Open for solving** and enter the name of the crossword to open using the standard Windows conventions.



Once the crossword is open you type in the answers in the [crossword window](#). The current square is highlighted. To enter letters downwards hold down the **SHIFT** key or turn **CAPS LOCK** on. To change a previously entered letter simply overwrite it (Asgard X-Win is ALWAYS in overwrite mode).

The clues are displayed in a separate window, and the current clue(s) are highlighted. If you have turned single line clues on only the clue(s) for the current square (across and/or down) are displayed in the status bar at the bottom of the screen.

To check if your answers are correct select the **Options/Check crossword** menu. Any wrong letters will be highlighted.

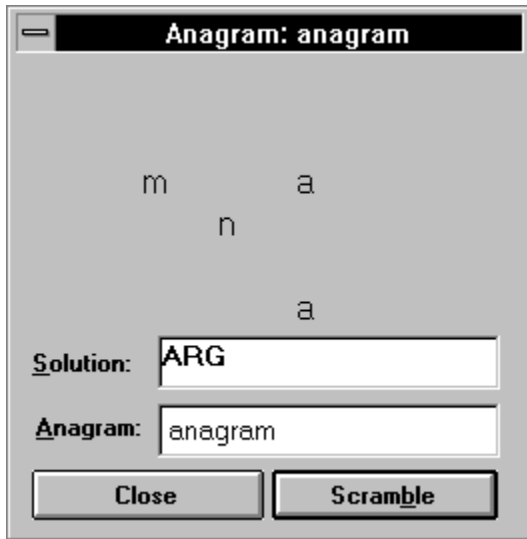
Whenever you exit Asgard X-Win or open another crossword the current crossword is automatically d. You can also save it by

[See also Main window...](#)

[See also Anagrams...](#)

Anagram Scrambler

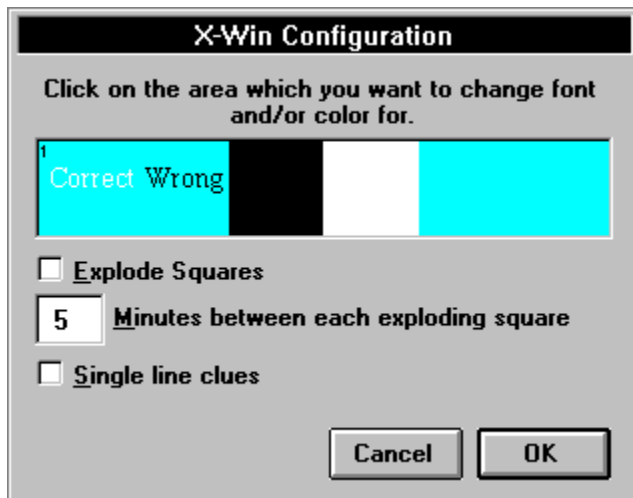
To help you solve anagrams Asgard X-Win provides an anagram scrambler. This takes one or more words which you enter and displays the characters randomly in a window. You can enter different combinations of the letters and try to solve the anagram.



Configure Asgard X-Win

You can change the colours used to display the crosswords as well as turning the feature of exploding squares on/off and whether to have all the clues displayed in the Clue dialogue box or just the current clue(s) in the status bar.

Select the **Options/Configure** menu and the dialogue box below will be displayed.

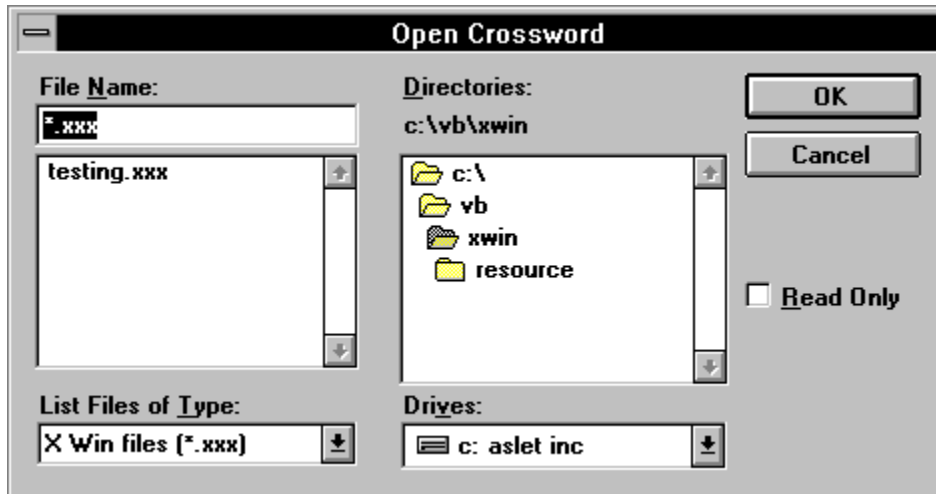


When you are finished save your setting by clicking on **OK**.

Editing an existing crossword

As well as creating new crosswords you can also edit existing crosswords or open templates which you modify and save as crosswords.

To edit a crossword you first need to open it. Select **File/Open for editing** and enter the name of the crossword to open using the standard Windows conventions.



You will now be asked for a password, you have 3 chances to enter it correctly. From here on proceed as described in [Creating a new Crossword](#)

Enter your full name here.

Enter your registration number as quoted by Springsoft here.

[Click here if you are not ready to register yet.](#)

[Click here to finish the registration process and unlock the full features of Asgard X-Win.](#)

Here you can see all the benefits you get by registering Asgard X-Win.

File

<u>N</u>ew	Ctrl+N
<u>O</u>pen for solving	Ctrl+O
Ope<u>n</u> for <u>e</u>dit<u>i</u>ng	
<u>S</u>ave	Ctrl+S
<u>R</u>estart crossword	
<u>S</u>how Solution	
<u>P</u>rint	Ctrl+P
Exit X-Win	

Options

<u>C</u> heck Crossword Ctrl+C <u>C</u> heck Scores
<u>C</u> onfigure <u>E</u> xplode Squares <u>S</u> ingle Clue
<u>A</u> nagram Solver Ctrl+A

This menu is only visible when you edit an existing crossword or when you create a new one. It can be invoked from the menu bar or by clicking on a square in the crossword.

Modify Square

<u>N</u>umber this square no	F2
Number this <u>s</u>quare no...	F3
<u>E</u>dit clues	F4
<u>M</u>ake square black	F5
Add black line <u>r</u>ight	F6
Add black line <u>b</u>ottom	F7

Help

<u>R</u>egister this copy
<u>C</u>ontents
<u>A</u>bout this <u>X</u>word
<u>A</u>bout X-Win

This is the area where you create the new crossword or solve an existing crossword. When you type in a character the focus is automatically moved to the next square. When you hold down the **SHIFT** key or have the **CAPS LOCK** on the focus will move downwards, i.e. this is how you solve the down clues.

You can use the following short cut keys to move to other cells:

Home: Goes to the first square in the current line

End: Goes to the last square in the current line

Ctrl+Home: Goes to the first square in the current line

Ctrl+End: Goes to the last square in the current line

Left: Goes to the next square on the left

Right: Goes to the next square on the right

Up: Goes to the next square above

Down: Goes to the next square down

Here you can see the clues for the current crossword. The Across clues are in the top box and the down clues are in the bottom one. The clue(s) for the current square is highlighted. To switch between the Simple and Cryptic clues simply click on the appropriate tab.

You can hide this box and display only the current clue in the status bar at the bottom of the screen if you want to. Click on the **Options** menu and select the **Single Clue** option. To bring the box back up click on this menu again.

Shows the direction you are entering letters in, across or down.

Displays information about what Asgard X-Win is currently doing. If you have turned Single Clues on the current clue will be displayed here.

Saves the current crossword

Restarts the current crossword, i.e. erases all answers you have entered.

Print a hard copy of the current crossword which you can solve away from your computer.

Exits Asgard X-Win.

Checks the crossword for incorrect answers and highlights the incorrect letters.

Display information about the current crossword.



Turns the random explosion of squares on and off. If a square is selected by the programme to explode and it has the correct letter already filled in you gain extra points.

If you click with the right mouse button on a button or window a small balloon will pop up and tell you briefly what it does.

Switches between displaying all the clues in the Clue dialogue box or just the current clue in the status bar.

Opens up the online help.

Displays the remaining letters of the anagram which have not been entered in the Solution box.

Here you enter the solution to the anagram. Whenever a letter from the anagram is entered here it will disappear from the display area above.

Here you enter the anagram which you want to scramble. If you have selected one or more words in the Clues box it will automatically appear here. After entering the word you need to click on **Scramble** or hit **ENTER**.

[Click here to close this dialogue box.](#)

[Click here to scramble the anagram.](#)

[Click here to change the font and colour used to display the numbers of the squares.](#)

[Click here to change the font and colour used to display the new letters \(and correct letters when you check a crossword\).](#)

[Click here to change the font and colour used to display the incorrect letters when you check a crossword.](#)

Change the colour used to display the (normally) black squares of the crossword.

Change the colour used to display the exploded squares of the crossword.

Change the colour used to display the background of the crossword.

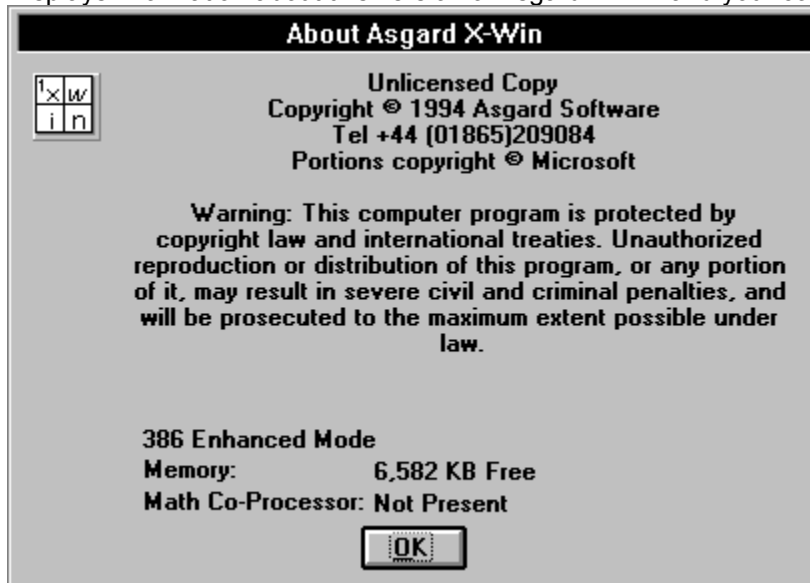
The number of minutes between each time a square is exploding. If a square is selected by the programme to explode and it has the correct letter already filled in you gain extra points.

Return to the main window without saving the configuration.

Return to the main window and save the configuration.

This will display the correct solution for the current crossword if you give up.

Displays information about this version of Asgard X-Win and your computer.



Displays the scoring table, i.e. the list of people with the last ten correct solutions and their points. The points are based on how long it took to solve the crossword compared with the time estimated by the creator, the level of the password and if any squares which was selected for random explosion had been filled in correctly.

Enter the number of squares you want horizontally in your crossword (max. 50)

Enter the number of squares you want vertically in your crossword (max. 50)

Enter your name (if you want to) here. This will be displayed to the people solving the crossword when they look at the [About Crossword box](#).

Each crossword can have a password to prevent others from opening it up and look at the solutions.
Enter this here, up to 10 letters.

Enter a descriptive (long) name for your crossword here, this is different from the filename which is maximum 8 characters.

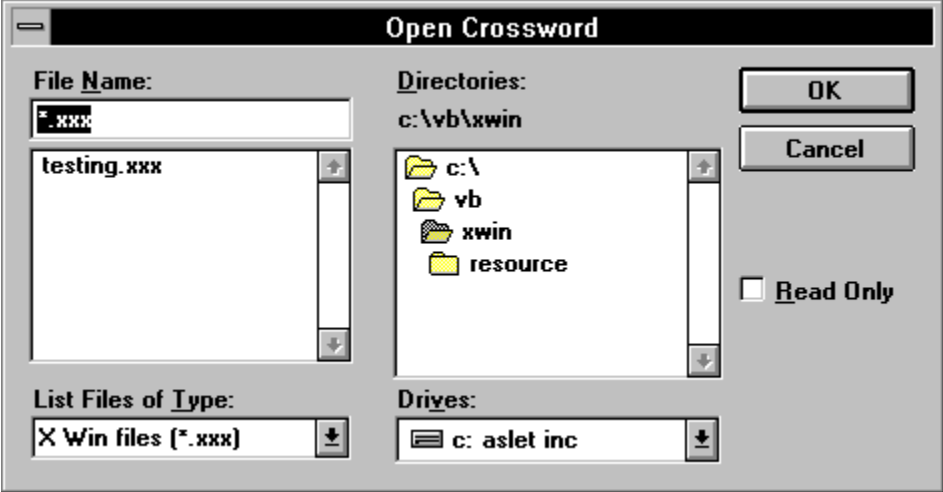
Enter the estimated time it should take to solve the crossword here. If users solve the crossword before the time is out the gain extra points.

Enter the level of this crossword, this should reflect how difficult the crossword is to solve. A cryptic crossword may be 10 and a simple crossword maybe 3.

You can save the information you have entered as defaults. This means that the next time you create a new crossword these values will automatically be loaded and you do not have to type them in again.

[Click here to cancel the creation of a new crossword and return to the main window.](#)

[Click here to accept the information you have entered and start filling in the crossword.](#)



Enter the simple across clue here. Max. 100 characters.

Enter the simple down clue here. Max. 100 characters.

Enter the cryptic across clue here. Max. 100 characters.

Enter the cryptic down clue here. Max. 100 characters.

[Click here to cancel the addition/editing of these clues.](#)

[Click here to accept the clues you just entered.](#)

If you number the squares consecutively select this option. The square will be marked with the number displayed and a small dialogue box will come up and here you enter the clues, simple and/or cryptic.

If you number the squares non-consecutively select this option. You will be asked for a number and the square will be marked with this number. A small dialogue box will come up and here you enter the clues, simple and/or cryptic.

Edit the previously entered clues for the selected square.

Make the current square black, or turn it back to normal if it already is black.

Make the right line of the current square thicker than normal (stop line), or turn it OFF if it already has a thick line.

Make the bottom line of the current square thicker than normal (stop line), or turn it OFF if it already has a thick line.

