

THE SCRAMBLER 1.0

INDEX

[Overview](#)

[Main Window](#)

[Game Menu](#)

[Button Bar](#)

[How To Play](#)

[Scoring](#)

[Registration Information](#)



OVERVIEW

The Scrambler 1.0 is a word scramble game with varying levels of difficulty ranging from very simple 3 letter words up to more difficult 8 letter words. The Scrambler 1.0 requires Windows 3.1 and ToolBook runtime 1.53. A mouse is also required for moving the letters in the scrambled word. The Scrambler 1.0 is being released as Shareware and is not free software. Please see [Registration Information](#) in this help file more more details.

GAME MENU

NEW- Starts a new game. Keyboard shortcut (F5). If you are currently in the middle of a game, the program will ask you if you wish to abandon the game in progress.

GIVE UP- If you are unable to solve a scrambled word and do not want to wait for the timer to timeout, select this option. **WARNING: Selecting this option will result in points lost.** See Scoring

CHEAT MODE - If this option is selected, the letter background will change to a light green color if the letter is in the correct position. This makes it very easy to solve the scrambled word (good for very young kids). **WARNING: Selecting this option will result in points lost.** See Scoring

SET GAME PREFERENCES- Selecting this option brings up the Game Preferences dialog box. From this dialog box you can set the following:

SOUND - On/Off (This option appears only if your system has a multimedia Windows 3.1 audio device driver installed.)

LEVEL - Beginner,Intermediate,Advanced,Expert

TIMER - 60,120,180,240,300,360 seconds to solve scrambled word

These settings will take effect the next time a new game is started.

VIEW GAME HISTORY- Selecting this option brings up the Game History dialog box. This dialog box shows you a list of all previous games and their results. If you see a WIN(C) under results, this indicates a WIN with either Cheat Mode having been activated or the Hint Feature being used. Also shown in the Game History dialog box is the Hall of Fame High Score. The highest score achieved is displayed here.

EXIT- Exits the program.

BUTTON BAR

The button bar located at the top of the window allows you push button access to all of the menu options. Please see [Game Menu](#) for a description of what these buttons do.



From LEFT to RIGHT:

NEW GAME Button

GIVE UP Button

CHEAT MODE Button

GAME HISTORY Button

GAME PREFERENCES Button

EXIT Button

HOW TO PLAY

Playing The Scrambler is very easy. After setting the game preferences (see [Game Menu](#)) begin a new game by selecting New from the Game menu or pressing the New game button in the [button bar](#). Pressing the F5 key will also start a new game.

To move a letter to a new location simply click with the left mouse button on the letter you wish to move. The letter will turn red indicating that it has been selected. Next click on the letter you wish to move it to. The two letters will switch places. Notice that while moving the mouse over the other letters the **VISUAL AID** at the lower left corner of the window constantly updates what the new word will look. The program will automatically check the new word after each move to determine if you have correctly unscrambled the word.

<HINT FEATURE> If you choose not to use the CHEAT MODE but would still like some help, you can click on any letter with the right mouse button. While the right button is held down, the letter background of the correct location for the letter you have clicked on will turn dark blue. **WARNING: Selecting this option will result in points lost.** See [Scoring](#)

SCORING

Each time you play The Scrambler you have an opportunity to accumulate points based on how well you do. Below is a breakdown of the possible points you can earn.

WIN- Each time you win (without using the CHEAT MODE or the HINT FEATURE) you will be awarded points. The amount of points awarded vary depending on the current difficulty level and how quickly you solve the scrambled word. The most points you can be awarded for any one win is 100 points and the least is 1 point.

CHEAT MODE- If this is used any time during a game you will lose points based on the current difficulty level. This also applies to using the HINT FEATURE.

Beginner: (-100)
Intermediate: (-75)
Advanced: (-50)
Expert: (-25)

TIME OUT- If during a game the timer runs out you will lose points based on the current difficulty level.

Beginner: (-25)
Intermediate: (-15)
Advanced: (-10)
Expert: (-5)

GIVE UP- If you choose to give up during a game you will lose points based on the current difficulty level.

Beginner: (-75)
Intermediate: (-50)
Advanced: (-25)
Expert: (-15)

The Scrambler 1.0 is being distributed as shareware. You are granted a thirty (30) day trial period to see if you like the program. If you decide to keep and use the program, you are required to register its use. The cost to register The Scrambler 1.0 is only \$7.00. By registering the program you will receive a registration number that will disable the start up shareware reminder. A registration form (REGISTER.TXT) has been included with this program. Please print it out and fill in the requested information. Send it along with a check or money order for \$7.00 payable to DunsonWare to the following address:

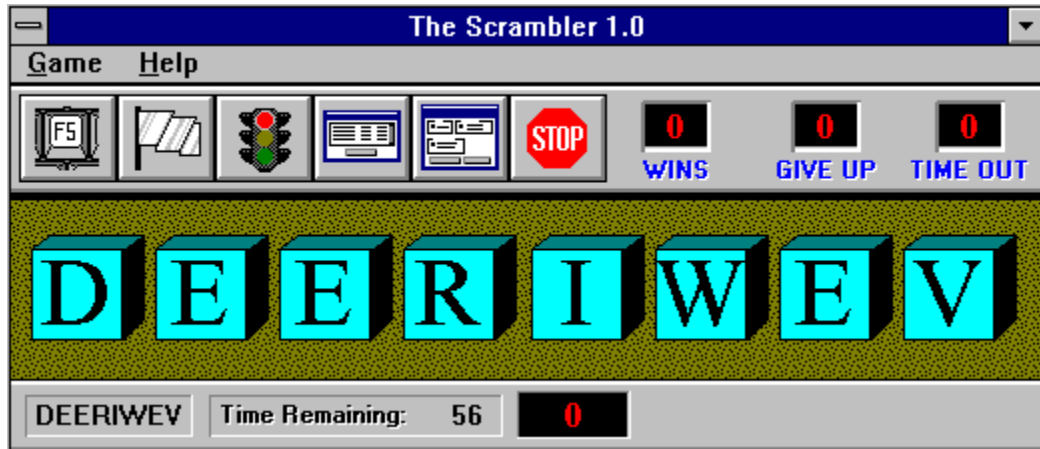
DunsonWare
P.O. Box 771269
Wichita, KS 67277-1269

[Registration Form On-line](#)

DISCLAIMER OF WARRANTY

THIS SOFTWARE IS SOLD "AS IS" AND WITHOUT WARRANTIES AS TO PERFORMANCE OF MERCHANTABILITY OR ANY OTHER WARRANTIES WHETHER EXPRESSED OR IMPLIED. BECAUSE OF THE VARIOUS HARDWARE AND SOFTWARE ENVIRONMENTS INTO WHICH THIS PROGRAM MAY BE PUT, NO WARRANTY OF FITNESS FOR A PARTICULAR PURPOSE IS OFFERED. THE USER MUST ASSUME THE ENTIRE RISK OF USING THE PROGRAM. ANY LIABILITY OF THE SELLER WILL BE LIMITED EXCLUSIVELY TO PRODUCT REPLACEMENT OR REFUND OF PURCHASE PRICE.

MAIN WINDOW



The Main Window is divided into three basic parts. The button bar is located at the top of the window. Next to the button bar are the totals for WINS, GIVE UPS and TIMEOUTS. The scrambled word appears in the middle of the window. At the bottom of the window, is the status bar. The status bar contains the following from left to right:

VISUAL AID - Shows you what the word will look like as you move the mouse over the different letters after selecting a letter to move.

TIME REMAINING - Shows the amount of time left to solve the current scrambled word.

SCORE BOX - Your total points accumulated are shown here.

REGISTRATION FORM FOR THE SCRAMBLER 1.0

DunsonWare Co.
P.O. Box 771269
Wichita, KS 67277-1269

Thank you for registering The Scrambler 1.0. Please fill out this form completely and send it along with a check or money order for \$7.00 payable to DunsonWare to the address listed above. Upon receipt of the registration, you will be sent a registration number to enter into the program. This will disable the startup shareware notice.

NAME: _____

STREET: _____

CITY: _____

STATE: _____

ZIP: _____

COMMENTS:
