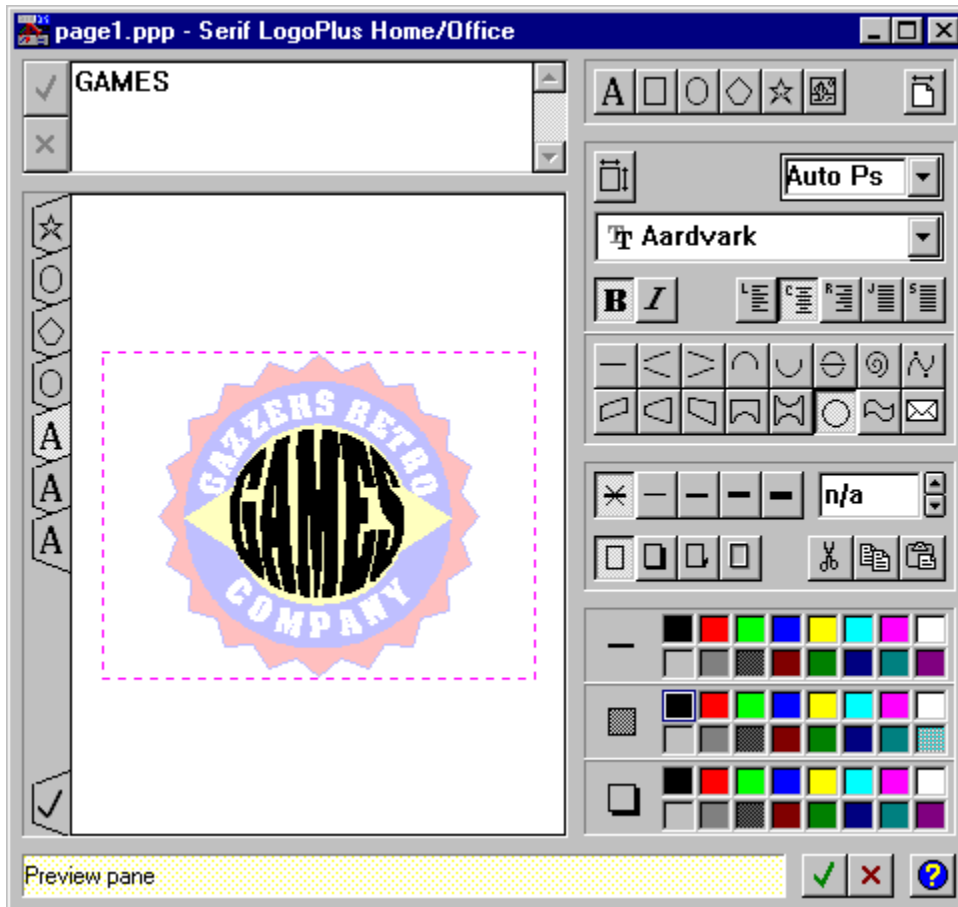


LogoPlus

This is the main LogoPlus working screen: the logo/headline module built into PagePlus. Use it to create shapes, fancy text, and combine them to make powerful headlines and logos to add impact to your publications. Start LogoPlus by clicking on the **LogoPlus** button in the Tool Bar, or by double-clicking on an existing LogoPlus object. For more details, watch the LogoPlus demo in PagePlus **Help/Demos...**

Click on the buttons, and other elements to find out more...



LogoPlus Title Bar

This displays the current PagePlus publication title, and the Windows controls for minimizing, maximizing and closing the window. The LogoPlus window can be resized and moved like any normal window to suit your method of working. For creating complex graphics, it's usual to use LogoPlus full screen.

LogoPlus Text Entry

This is where you enter and edit your text for each text layer. When LogoPlus starts, it automatically creates a single text layer, ready for you to type in to. When you've entered or edited your text, click on the Preview Window to update the display.

LogoPlus Preview Pane

Your final image is shown here. The inner dotted rectangle shows the actual area which will be displayed when the object is put back into PagePlus. Anything outside the dotted box will get "clipped".

Click on this Preview Pane to Update your display.

Drag to zoom in on a specific area of your logo. Or, double-click to get a dialog to change the view/zoom % of the display.

LogoPlus Update

When a tab is selected to work with the specific item/layer, the rest of your logo is drawn in reduced intensity so you can see the current item better. Click on this tab to de-select all layers and fully display your logo.



LogoPlus Tabs Bar

LogoPlus works with layers (using a tab for each layer) each containing one item. Select an item/layer by clicking on a tab, and reorder layers by dragging a tab up or down. You can see this logo is made using text, a star, a polygon and an oval. A new tab/layer is added for each new item you create using the Create Object/Layer buttons at the top of the front panel.

LogoPlus Status Bar

This includes a helpful HintLine and the buttons for closing LogoPlus. (Holding the mouse over any LogoPlus button will pop-up a Tool Hint.)

LogoPlus Colors

This lets you quickly apply colors to the line, fill and shadow of any object. Double click for patterns, tints and more colors.

LogoPlus Create Object/Layer

Click on one of these buttons to add the specified item to a new layer.
A new tab will be created on the Tabs Bar. Create text, ovals, squares, stars, polygons and pictures.

LogoPlus Size

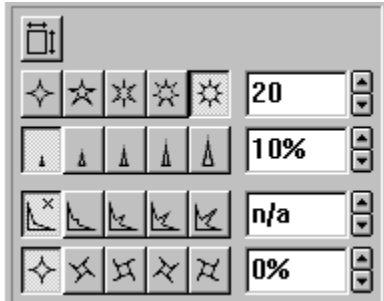
This button lets you change the current size of your LogoPlus object (shown by the dotted box in the Preview Pane). The original size is specified by the area that you dragged out when starting LogoPlus.

LogoPlus Modify Panel

This panel contains the buttons for controlling how your item/layer looks. It changes depending on what is selected. This one is text and has formatting commands, and buttons to apply different baseline and envelope effects. Double-click on buttons for more options. Click on upper left button to change this area to specify size/position.

LogoPlus Star

Click to select the star item/layer. This is how the Modify Panel looks with a star item/layer selected.



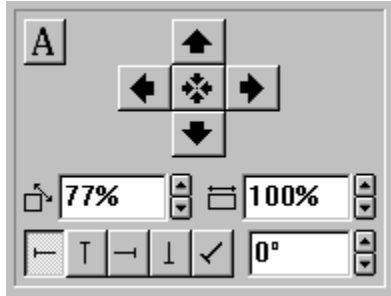
LogoPlus Polygon

Click to select the polygon (diamond) item/layer. This is how the Modify Panel looks with a star item/layer selected.



LogoPlus Object Size/Position

Clicking on this button changes the Modify Panel to display size/position options for this item/layer. For boxes, ovals, and pictures this is the only option available in the Modify Panel.



LogoPlus Edit Panel

This area includes edit/clipboard buttons, and shadow and line thickness options for your selected item/layer. Double-click on shadow/line buttons for more options.

LogoPlus Text Object

This text, with a circular envelope applied to it, is the currently selected item/layer. Notice the highlighted tab in the Tabs Bar and the text options available on the Modify Panel.

