

Lesson 2

Printing and More

In this lesson we'll learn how to open an existing project, to print patterns, yardage, and sewing instructions for the blocks. Here we go.

- 1 Double-click the **Quilt Wizard** icon on your desktop to start the program.
- 2 The program always starts on the **Learn** tab. We want to open the project we made in Lesson 1 and print the patterns. Click the **Print** tab along the top of the screen.
- 3 Notice the toolbar changes at the top. Also notice that the main title bar says **Untitled** because we have an empty project. Click the **Open** tool. The *Open* dialog box displays.
- 4 The **Look in:** box displays the folder name of the location you are looking. We saved our quilt to the **My Documents** folder. If necessary, click the box's down arrow to navigate to **My Documents**. When you double-click on the **My Documents** folder, its name will display in the **Look in:** box. The project names will appear below.
- 5 Click on the project name **My First Quilt**.
- 6 Click the **Open** button. Your quilt is now displayed in the **Print** tab. You should see the name, **My First Quilt**, on the top title bar.
- 7 Click the down-pointing black arrow for **Print Quilt Yardage** in your palette.
- 8 Click **44 inches** so there is a dot in front of it.
- 9 Make sure the seam allowance shows **0.25**. Type it if necessary.
- 10 Number of copies should be **1**.
- 11 Click the **Preview** button in the palette to preview your printout before printing.
- 12 Click **Print** to print the yardage estimate.



Tip

Here is how Quilt Design Wizard™ figures yardage.

- It adds the seam allowance you select to each patch.
- It places an imaginary rectangle around each patch.
- It places these rectangles on fabric of the selected width.
- Each time a "row" is filled, it begins a new row, counting the entire strip as required yardage.

The result is generally an over estimate. Shapes like on-point sashes tend to give exceptionally large yardage figures. The estimate for the border generally requires a length of fabric as long as the longest border strip.

Backing and binding are not estimated.

- 13 Click **Print Rotary Cutting Pattern** in the palette. You will see a message saying you need to select a block.
- 14 Click on the **Swamp Patch** block in the upper-left corner of the quilt. The selected block will appear in the palette.
- 15 Click to place a check in **Get size from quilt**. This will automatically set the size to 9 for width and height. You'll remember that all our blocks in this quilt are 9 inches.



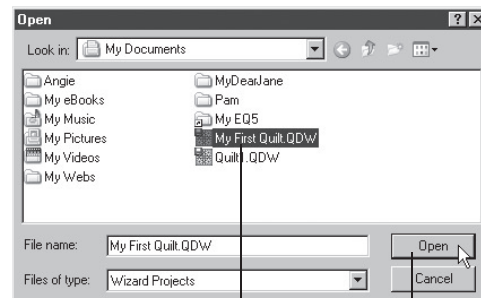
Quilt Wizard
Step 1



Step 3



Open tool



Step 5

Step 6



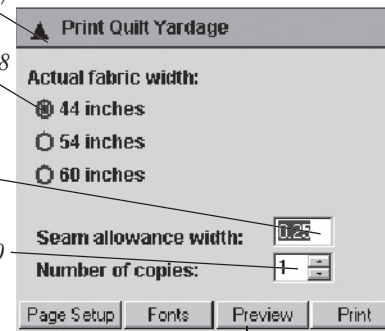
The project title is displayed
at the top of the screen.

Step 7

Step 8

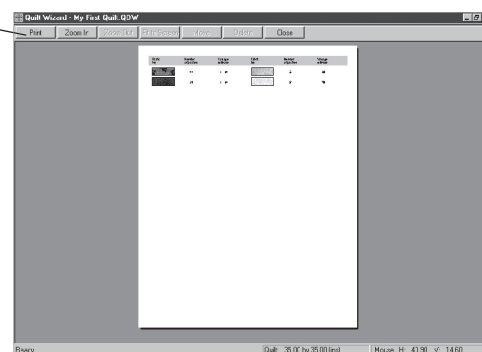
Step 9

Step 10



Step 11

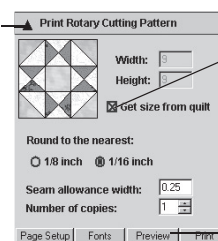
Step 12



Print Preview of yardage estimate

Step 13

Step 15



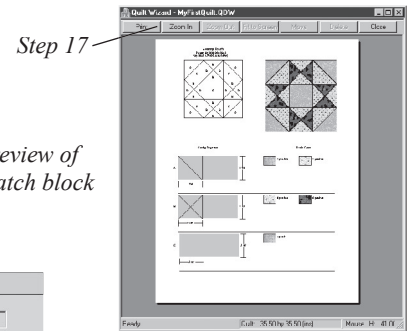
Step 16

- 16 Click **Preview** at the bottom of the palette to preview your printout before printing.
- 17 Click **Print** to print the rotary cutting chart for the **Swamp Patch**.
- 18 Now position the mouse over the **Shoo Fly** block on the quilt, and click to select it. The palette will display this block for printing.
- 19 Click **Preview** at the bottom of the palette to preview your printout before printing.
- 20 Click **Print** to print the rotary cutting chart for the **Shoo Fly**.

That was easy! We've opened an existing project and printed rotary cutting charts for the blocks. These charts give a visual display of how to cut the patches for each fabric used in the blocks.

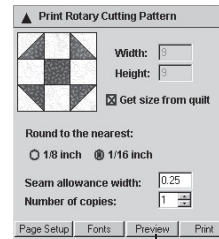
Once the patches are cut, you'll need to know how to assemble them. Quilt Design Wizard™ includes sewing instructions for all the blocks. Here's how to find them.

- 21 Click the **Learn** tab.
- 22 Click **Blocks** in the palette on the right. This section contains all kinds of information about how to use the **Blocks** tab of the program along with design tips and sewing instructions.
- 23 Click on **Sewing Instructions**.
- 24 Click on the **Nine Patch** category. You'll see all the blocks in the Nine Patch library.
- 25 Click on the **Shoo Fly** block. Remember to float the mouse cursor over the block to see the block name if you forget what the **Shoo Fly** block looks like.
- 26 The sewing instructions will appear for the **Shoo Fly** block. If you like, you can click the **Print** tool at the top of the page to print the sewing instructions for this block.



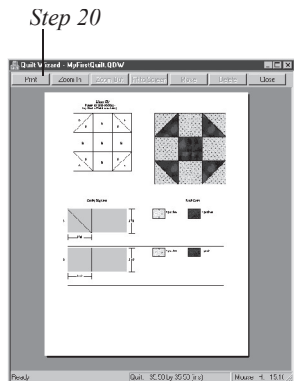
Step 17

Print Preview of Swamp Patch block

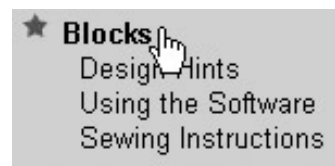


Step 19

Print Preview of Shoo Fly block

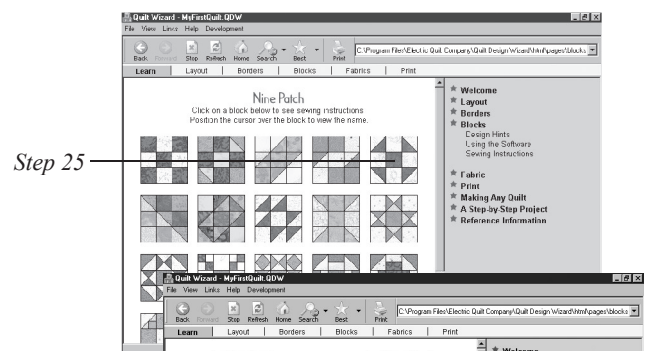


Step 20



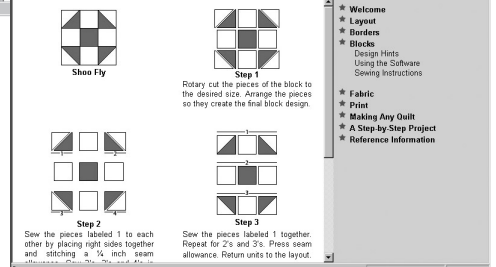
Step 22

Step 23



Step 25

Step 26
Sewing instructions for the Shoo Fly block.



27 Click the **Back** button to return to the page showing all the blocks in the Nine Patch library.



Step 27



Step 29

28 Click on the **Swamp Patch** block.

29 The sewing instructions will appear for the **Swamp Patch** block. If you like, you can click the **Print** tool at the top of the page to print the sewing instructions for this block.

Now you have cutting and sewing instructions for the blocks in your quilt. Want more?

For those of you who would like more help, we've included complete instructions for making this quilt.

30 Click on **A Step-by-Step Project** in the palette at the right.

31 Click on **Getting Ready**.

32 Click on **Design Your Quilt**.

33 As you'll read here, you've already completed the *design* step. Click the other links across the top of the page for *Getting Ready*.

34 Click **Sewing the Quilt Top** in the palette, and then click **Make the Blocks**. Click the other links across the top of the page for *Sewing the Quilt Top*. If you like, you can click the **Print** tool at the top of the page to print any of the information.



Tip

If your printout is of the palette on the right instead of the information on the main part of the screen, position the mouse over the main part of screen and click. This will put the focus there. Try printing again.

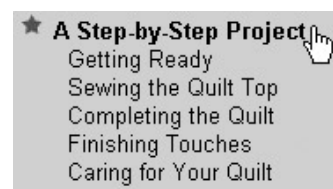
35 Continue to click on links and explore the **Learn** tab for as long as you like. When you're ready to exit the program, click **File** on the main menu.

36 Click **Exit**. Quilt Design Wizard™ will close.

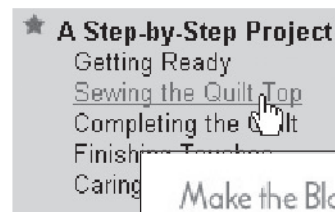


Tip

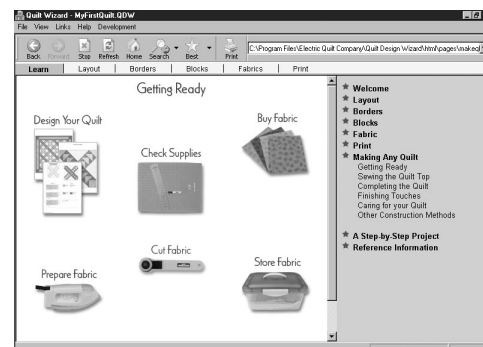
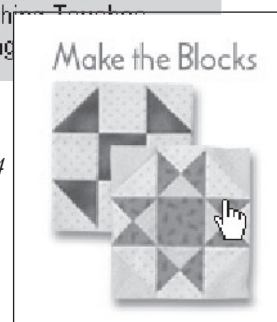
If you are new to quilting, there's much to learn. We've included all kinds of information under **Making Any Quilt**. You'll find help about buying and preparing fabric, gathering supplies, rotary cutting and much, much more. It's simply not possible for Quilt Design Wizard™ to give specific assembly and sewing instructions for every quilt because it's impossible to know what kind of design you may dream up. This section is intended to give you an understanding of the basics and the resources needed to guide you through the steps on your own.



Step 30



Step 34



The **Making Any Quilt** section of the **Learn** tab guides you through the basics of quilting.