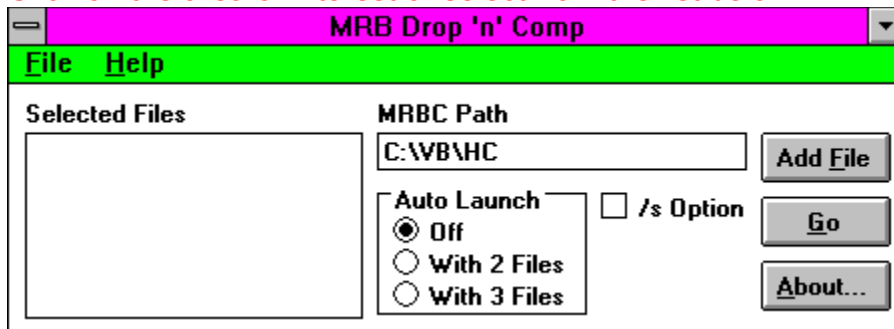


Using MRB Drop 'n' Comp

Click on the area of interest or select from the list below



[Selected Files](#)

[Auto Launch](#)

[Add File](#)

[MRBC Path](#)

[/s Option](#)

[Go](#)

[File Menu](#)

[Help Menu](#)

[About](#)

Overview

[MRB Drop 'n' Comp](#) is a windows front end for the [MRBC](#). It enables you to select a group of files using [File Manager](#) and drop them onto the [MRB Drop 'n' Comp](#) window or icon. With the [Auto Launch](#) feature enabled compilation will automatically start when the required number of files have been selected.

Installation

To install the [MRB Drop 'n' Comp](#) program simply copy the files MRBDNC.EXE, MRBDNC.HLP and CMDIALOG.VBX to a directory of your choice. VBRUN200.DLL must also be available on your path.

To de-install delete all the above files and delete the MRBDNC.INI file from your Windows directory.

When you run [MRB Drop 'n' Comp](#) for the first time the path to the [MRBC](#) defaults to C:\VB\HC - if you are using Visual Basic and selected the default installation then this need not be changed. Otherwise change this to the full path where MRBC.EXE (or .PIF) can be found.

You're now ready to use [MRB Drop 'n' Comp](#)!

See [Using MRB Drop 'n' Comp](#) for other options

Why use the MRBC?

The [MRBC](#) compiles a group of bitmaps into one file which is referenced in the help file source. When compiled and executed the WinHelp engine uses the bitmap that best suits the resolution in use.

The WinHelp screen is virtualized to a 1024x1024 area thus the display aspect ratios vary depending on the actual screen resolution.

To prevent distortion of images you should prepare bitmaps at VGA (640x480 or 800x600) and 8514 (1024x768) resolutions (and EGA if deemed necessary) - These can be Windows BMP files or SHG Hypergraphics files - and compile them with the [MRBC](#)

Normally to use the [MRBC](#) you would shell out to DOS and issue the command `MRBC [/s] File1 File2...` With [MRB Drop 'n' Comp](#) simply select the files you wish to compile in [File Manager](#) and drop them onto the [MRB Drop 'n' Comp](#) window or icon. With [Auto Launch](#) set you will automatically shell out to DOS, compile the selected files and return to Windows. If you don't wish to use drag 'n' drop you can use the [Add File](#) button to select the files to be compiled individually.

Either way [MRB Drop 'n' Comp](#) is an easy way to make the best of the [MRBC](#)

Contents

[Overview](#)

[Installation](#)

[Why use the MRBC?](#)

[MRB Drop 'n' Comp](#)

[About CreateHelp! - Help Authoring Tool](#)

[Contacting CHC Software](#)

[Legal Stuff](#)

About CreateHelp!

CreateHelp! was born out of the need for a good, easy to use help file authoring tool. There are other tools available, but the good ones are very expensive, and the cheap ones aren't very good. CreateHelp! is intended to fill that gap.

The initial release of CreateHelp! enjoyed a very favourable response, and because of support from its users has now evolved into a much more powerful second version.

The features available include:

Automatic 'See Also' Button	*new*
Automatic outline building	*new*
Automatic page building	*new*
Automatic search and referencing	*enhanced*
Compilation of current page	*new*
Context name guessing	*enhanced*
Context Numbering	*new*
Default Context Formatting	*enhanced*
Full editing of HPJ file	*enhanced*
Multiple file support	*enhanced*
Report Generation	*new*
Secondary window definition	*new*
Support of WinHelp macros	*new*
User definable macros	*new*

CreateHelp! is distributed as Shareware. You will find it as the archive CH2xx.ZIP (where xx is the minor version number) on CompuServe WINSKD and MSBASIC forums, on CIX WinHelp forum, or from your local disk vendor.

Contacting CHC Software

You can contact CHC Software by writing to:

On CompuServe 100111,3452

On Internet nicb@cix.compulink.co.uk

By Mail CHC Software
27 West Park
London SE9 4RZ
ENGLAND

Legal Stuff

Disclaimer

This product is provided "as is" without representation of warranty, either expressed or implied.

The entire risk as to the use of this product is assumed by the user. In no event will Nic Barnes nor his estate be liable for any damages direct, indirect, incidental or consequential resulting from any defect in the product.

If you do not accept these terms you must cease using this product forthwith and destroy the program, the documentation and all copies thereof.

Copyright

These programs and the related documentation are copyright. The sole owner is Nic Barnes. All rights reserved. You may not use, copy, modify, or transfer the programs, documentation, or any copy except as expressly provided in the licensing agreement.

© Copyright Nic Barnes 1993.

Licensing Agreement

You are hereby licensed to: Make as many copies of this software and documentation as you wish; give exact copies of the original to anyone; and distribute the software and documentation in its unmodified form via electronic means. There is no charge for any of the above.

You are specifically prohibited from charging, or requesting donations, for any such copies, however made; and from distributing the software and/or documentation with other products (commercial or otherwise) without prior written permission.

About Button - Brings up the About box, displaying info on contacting CHC Software and other details

GO - Launches the MRBC with the files listed in the Selected Files box. This is only active if Auto Launch is set to Off

Add File - brings up the common dialog box to select a file to add to the Selected Files list. Files can be selected in this way instead of using drag 'n' drop.

Selected Files - Lists the files selected for compilation.

MRBC Path - the path to the MRBC. No checking is done, thus if the path is not valid the compilation will fail and MRB Drag 'n' Comp will terminate.

Auto Launch - sets whether to launch the MRBC when the Selected Files list reaches 2 or 3 files. If set to Off then Go must be selected to start compilation.

/s Option - adds the /s command line switch to the MRBC. In this mode the MRBC will guess the resolutions of the selected files and requires no user input. Otherwise the resolution must be entered for each file being compiled. These are **CGA**, **EGA**, **Macintosh**, **VGA** and **8514**.

MRBC - the Microsoft Multiple Resolution Bitmap Compiler

File Manager - the Windows File Manager or any other drag 'n' drop server such as XTree for Windows

MRB Drop 'n' Comp - Windows front end for the MRBC - © Nic Barnes 1993

'Add File' and 'Go' are also available from the File Menu

'About' is duplicated on the Help Menu as well as an Index option to take you to the contents page of this file

