



Icon To Bitmap

Purpose

Controls

Drive Listbox

Directory Listbox

Filename Listbox

File Convert Listbox

Icon Display Area

Add Button

Add All Button

Convert All Button

Convert Button

Remove Button

Remove All Button

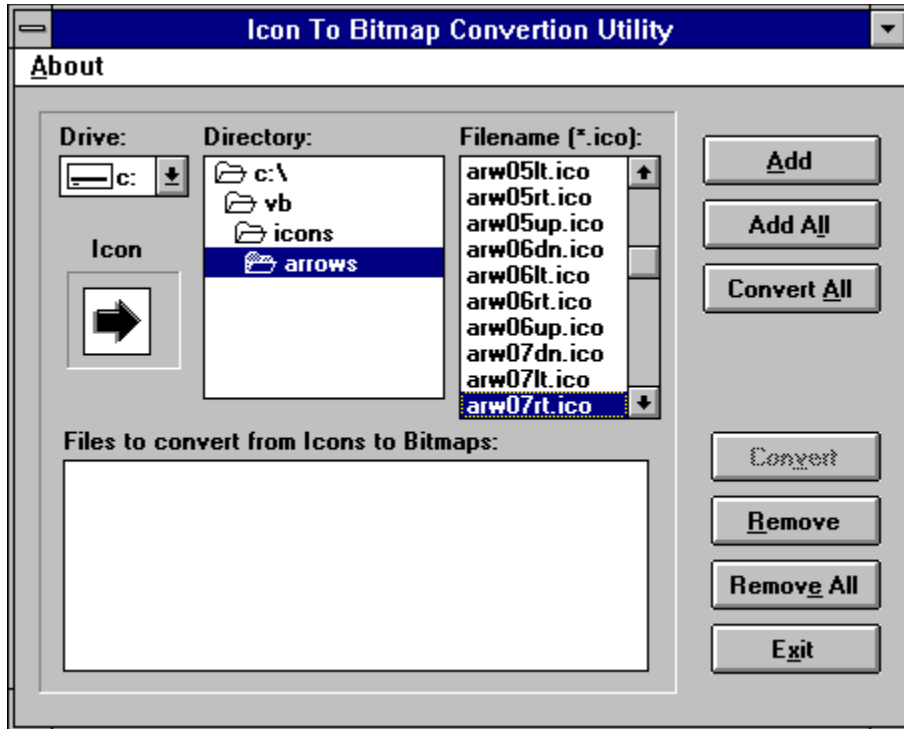
Exit Button

Purpose

Ico2Bmp is a general purpose utility for converting Windows Icons to Windows Bitmaps. As a secondary function you can display icons by simply highlighting them in a file list box.

Icons may be converted singly or in groups by selecting the icons you want converted into the larger group list box located under the displayed icon.

You may select parts of the picture below with the mouse to obtain additional information.



Drive

A Standard Windows Drive select control. Used to select the drive where the *.ico files are located. On changing drives the directories located on the selected drive will appear in the directory listbox. You will note that the drive, directory, and filename listboxes all work together to provide an easy means of working with your icon files.

Directory

Standard Windows directory select control. Used to select the directory where the *.ico files are stored. On selecting the directory where your icon files are located the filename listbox will automatically list all the valid *.ico files.

Filename

Standard Windows select filename control. Used to select the *.ico file(s) for conversion to *.bmp file(s).

You can also use the filename listbox to see the icons located in the current directory on the current drive by using the cursor to select an icon name in the filename listbox. This will display the icon in the icon display window and allow you to quickly find the icon you are looking for by using the up/down arrow keys and perusing the filename list.

File Convert List

Listbox showing the files to be converted from *.ico to *.bmp format. This list can be modified using the add, add all, remove, and remove all buttons.

Add Button

Selecting the add button adds the file highlighted in the filename list box to the file conversion list box.

Add All Button

The Add All button adds all the *.ico files in the current directory to the [file convert list box](#).

Convert All

Selecting the Convert All Button automatically converts all *.ico files in the current directory to *.bmp files.

Convert

Selecting the Convert Button converts the currently highlighted *.ico file in the filename list box to *.bmp.

Remove

Selecting the Remove Button removes the currently highlighted file from the conversion list box.

Remove All

Selecting the Remove All Button removes all the files from the file convert list box.

Exit

Selecting the Exit Button exits ICO2BMP and closes the window.

Icon Display Area

The icon display area shows the icon currently highlighted in the filename list box.

Bitmap

A Windows picture file consisting of colored pixels on a colored background. Bitmaps are the standard picture format for all Windows applications and can be created using a variety of "paint" programs like Paintbrush that comes with Windows.

A bitmap file has the extension .bmp.

Paintbrush can also convert *.pcx files (ZSOFT pictures) to *.bmp files.

Icon

An Icon is a special Windows picture file. An icon has a fixed size (32 x 32 pixels) and consists of at least two bitmap images. A color image and a mask (black and white) image. Icons also have the ability to change color or form when selected using the keyboard or mouse.

An icon file has the extension .ico.

