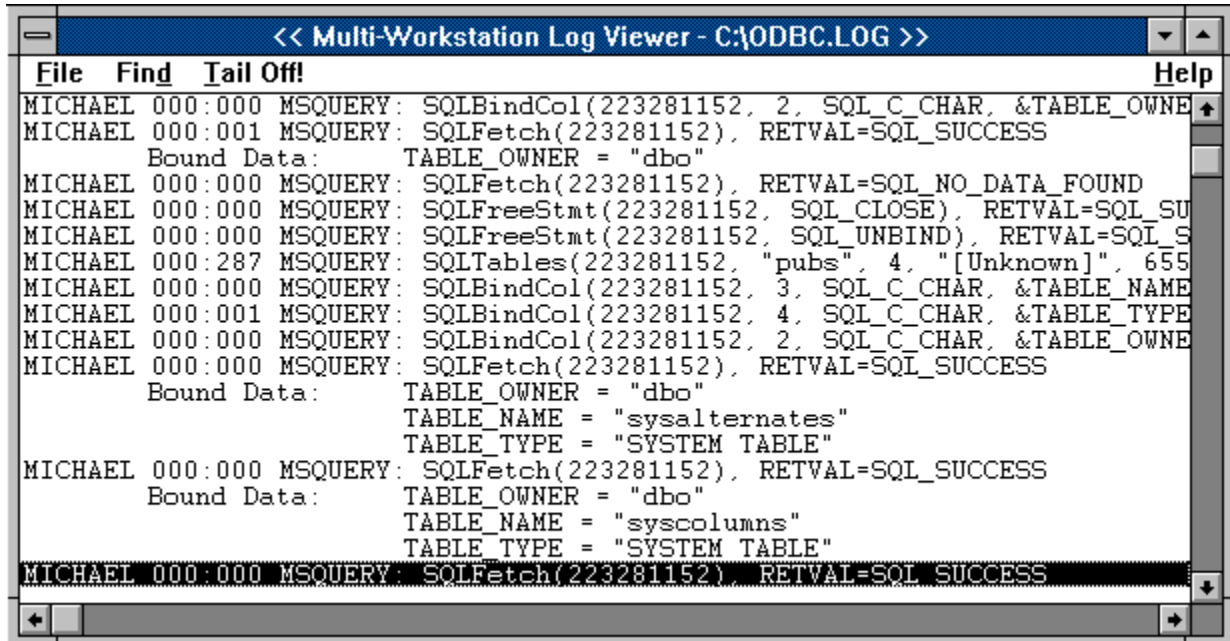


Multi-Workstation Log Viewer

This utility allows a network administrator to view a shared log file. This utility can be started by selecting the Launch Log File Viewer item from the Inspector menu, or by double-clicking the Log File Viewer's icon in the Program Manager.

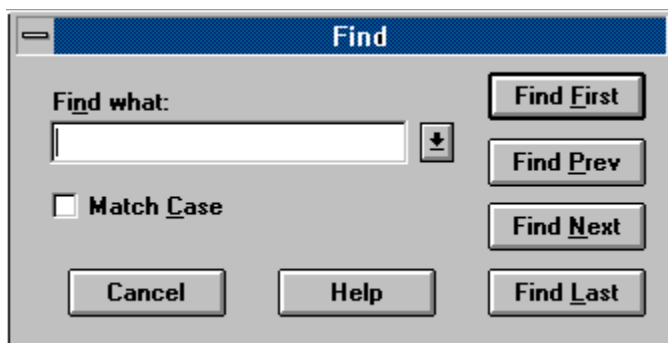


The Viewer normally displays the end of the log file, and continually scrolls new data into view as it is written to the log file by any workstations.

Choosing the **Tail Off!** command from the menu causes the Viewer not to automatically show new data; this lets the user browse through the file without being interrupted by new data.

The Viewer normally brings up the log file as configured in the Inspector's Options dialog box. However, the user may open a different file by choosing the **Open...** command from the File menu.

The **Find** menu commands bring up a dialog box that lets the user search the log file for a given text string. As in the Inspector, the user can perform Find First, Find Previous, Find Next and Find Last operations to locate a specific occurrence of the search text.



The Find window remains active until it is closed, to allow repeating of searches.

