

Reference Manual

ADASoft Query By Form Wizard

Introduction Query By Form

Document Conventions

This manual uses the following typographic conventions.

Example of convention	Description
<i>class, name</i>	In syntax, text in italic indicates placeholders for information you supply.
<code>adaQBFeditFilter()</code>	This font is used to indicate program lines.

What is Query By Form?

When you're viewing data in a form, you can use a filter to find the records you want, the search criteria might vary each time you search. But it takes time to design a filter every time you want to locate certain records, and some users may not be skilled in designing filters. To find a specific set of records quickly, you can use the **ADASoft Query By Form Add-In**. This allows you to predefine sets of named filters and allows the user to select one of those filters, enter criteria in a standard dialog window and then runs a filter. This technique of entering criteria into a form is called Query By Form.

This Add-in makes it possible to use Query By Form with only two new functions. These functions gives you all the functionality you need, add, maintain and apply the filters.

Installation

The minimum requirements for your computer to use the **ADASoft Query By Form Add-In** are the same as for Microsoft Access, although additional disc will be required to store the library database.

Use the Add-in Manager to install the **ADASoft Query By Form Add-in** on your computer.

To install ADASoft Query By Form Add-in

1. Start Microsoft Access.
2. Open a database.
3. From the File menu, choose Add-ins, and then Add-in Manager.
4. In the Add-in Manager window, choose Add New.
5. In the Add New Library window, enter the *path* where the library is located and the filename **WZADAQBF.MDA**, for example **a:\wzadaqbf.mda**.
6. Choose the OK button.
7. In the list of Available Libraries, the **Query By Form Wizards** will be displayed.
8. Choose the Close button.
9. Follow the instructions on the screen.

The Add-in manager installs the library in the Microsoft Access directory.

Query By Form Setup

Before you can use the ADASoft Query By Form wizard, you have to setup your database.

Setup your database

1. Start Microsoft Access
2. Open the database, where you want to use the ADASoft Query By Form Wizards.
3. From the File menu, choose Add-ins, and then Query By Form Setup.
4. Choose Add.
5. Follow the setup instructions on screen.

The setup procedure installs two tables into your database, USysadaQBFDocuments and USysadaQBFPParameters. These tables are required to store the filters.

Important This procedure has only be done once for each application database, where you want to use the ADASoft Query By Form Wizards. The setup procedure will want you, when you try to install the required object for the second time.

How to use the ADASoft Query By Form Add-in

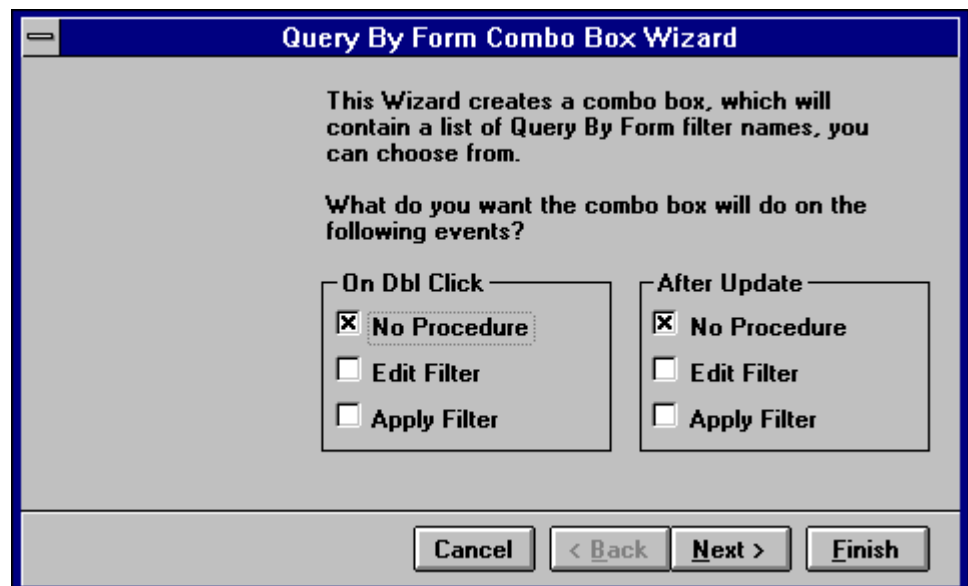
This section gives you a quick overview how to use the ADASoft Query By Form Add-in. It describes how to create a form, with the controls to handle the Query By Form functions.

After you installed the ADASoft Query By Form Add-in and prepared your database, as described in the previous chapter, you can modify a form to use this new add-in.

1. Open the database which is setup as described in the previous chapter.
2. Open a Form based on a Table or Query in Design view.
3. Make the Toolbox toolbar available and be sure that the Control Wizards button is turned on.
4. Click on the Combo Box button from the Toolbox toolbar and create a combo box control on the form. A dialog window will appear:



5. Select from this list Query By Form Filter List and click on the OK button.
6. A dialog form will be displayed:



Select *Edit Filter* for the *On Dbl Click* event, and *Apply*

Filter for the *After Update* Event.

7. Click on the Finish button.
6. A combo box is created which will give the user a list of available filters for this form.

Maintenance Form

This form allows you to define a filter. An example of this form is shown below.

Field	Label	Operator	Values	Constant
▶ Product Name		Like		<input checked="" type="checkbox"/>
*				<input type="checkbox"/>

Main information

In the top of the form, the document class ('Form') and name ('Products New') are filled in. You have to enter the name of the filter, in this example 'Search on a specific product'. A description may be entered for internal documentation, or to give the user more explanation on this filter in the Query By Form Dialog.

Parameters

Parameters will be used by ADASoft Query By Form Add-In to build and apply the filter for your document.

In Parameters, you can specify the fields with which you want to filter your document. In the control Field, a list is available of all fields, found in the RecordSource of the specified document.

The value you enter in Label will be used as caption for the prompt in the Query By Form Dialog form. If you leave this empty, ADASoft Query By Form will use the Field as caption.

Operator will be used to compare the entered values in the corresponding fields. Currently the following operators are supported:

<
<=
=
>=
>

Like
Between

Values can contain the constant or default values for your filter.

If Constant is set, the combination of Field, Operator and Values will be used as a constant criteria in your filter (If Values is not filled in, this Constant will be skipped), and these criteria will not be shown to the user in the Query By Form Dialog form. If Constant is clear, the Query By Form Dialog form will prompt for these criteria, entered Values are used as defaults for the user.

Functions

After installing the ADASoft Query By Form Wizards, two new functions will be available.

adaQBFEEditFilter Function

Description This function opens the **Query By Form Maintenance** form, which allows you to add or modify a predefined filter for the specified document.

Syntax `adaQBFEEditFilter(objecttype, name, filter)`

Argument	Description
<i>objecttype</i>	One of the following intrinsic constants: A_FORM A_REPORT
<i>objectname</i>	A string expression that is the valid name of an object of the type selected with the objecttype argument in the current database.
<i>filter</i>	A string expression that is the valid name of a filter.

Remarks This function returns **True** if the function completes successfully, else it will return **False**.

Example In this example, the **adaQBFEEditFilter** function will first open the **Query By Form Maintenance** form, for the form 'Supplier New', with the filter 'Search on a specific product':

```
ReturnValue = adaQBFEEditFilter( "Forms", "Supplier New", "Search on a specific product" )
```

adaQBFOpenDocument Function

Description This function opens the **Query By Form Dialog** form, which allows the user to enter criteria for the filter of the specified document.

Syntax `adaQBFOpenDocument(objecttype, name, view, filter)`

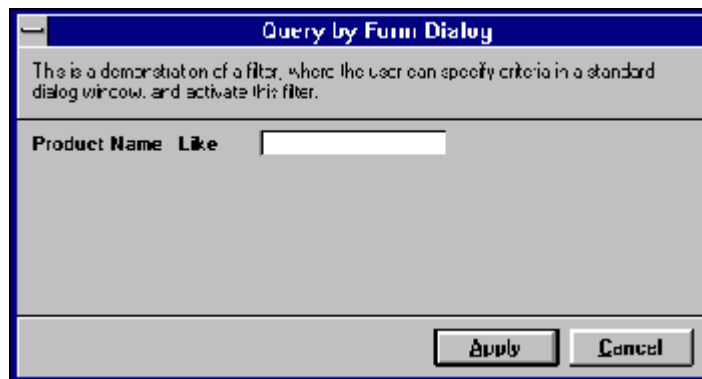
Argument	Description
<i>objecttype</i>	One of the following intrinsic constants: A_FORM A_REPORT
<i>objectname</i>	A string expression that is the valid name of an object of the type selected with the objecttype argument in the current database.
<i>view</i>	One of the following intrinsic constants: A_NORMAL A_PREVIEW
<i>filter</i>	A string expression that is the valid name of a filter.

Remarks This function returns **True** if the function completes successfully, else it will return **False**. If the document is not already opened, this function will open the document for you in the specified *view* mode. If a *filter* is specified, with only constants as filter parameters, the **Query By Form Dialog** form will not be displayed, and the filter is used immediately on the specified document. A filter with no entered criteria (constants and responses in the **Query By Form Dialog**) will act the same as the ShowAllRecords Action.

See Also OpenForm Action; OpenReport Action; ShowAllRecords Action

Example In this example, the `adaQBFOpenDocument` function will first open the **Query By Form Dialog** form, for the form 'Supplier New', with the filter 'Search on a specific product':

```
ReturnValue = adaQBFOpenDocument( "Forms", "Supplier New", A_NORMAL, "Search on a specific product")
```



After the user enters his criteria, for example '*a*', and chooses Apply, the form 'Supplier New' will be opened, if it was not already opened, and the filter will be applied on this form.