



Uninstaller Mover Help Contents



Introducing UnInstaller Mover



Moving an Application

- ▨ Starting UnInstaller Mover
- ▨ Selecting the Application to Move
 - ▨ Using Program Groups
 - ▨ Browsing for an Application
- ▨ Selecting the Destination
- ▨ Finishing the Operation



Getting to Know UnInstaller Mover

- ▨ The Main Window
- ▨ The File Menu
- ▨ The Tools Menu
- ▨ The Help Menu
- ▨ The List View
- ▨ UnInstaller Mover Buttons



Setting UnInstaller Mover Preferences



Special Offer for UnInstaller Upgrade



Introducing UnInstaller Mover



Use UnInstaller Mover to move an application from its current location to another drive or directory.

UnInstaller Mover makes it easy to move an application to new location on your system. When you move an application to another drive or directory using UnInstaller Mover, your system and application settings are automatically updated to reflect the new location of the application.

UnInstaller Mover completely moves the application by moving all the appropriate application files and updating all system and application settings. When you move an application with File Manager or with DOS, system and application settings are not updated meaning the application will typically not work after it is moved.

UnInstaller Mover uses the SmartLinks technology found in MicroHelp UnInstaller to determine which files need to be moved and which system and application settings need to be updated.

UnInstaller Mover is limited to moving applications from one location to another. The retail version of UnInstaller offers many additional features including the ability to delete applications from your system, archive applications you seldom use, and transport applications to another computer. UnInstaller also provides utilities to help you clean up unnecessary files and free-up valuable disk space. See [Special Offer for UnInstaller Upgrade](#) for information on how you can get the full retail version of UnInstaller for a special price.

Related Topics

[Moving an Application](#)

[Getting to Know UnInstaller Mover](#)

[Setting UnInstaller Mover Preferences](#)







[Special Offer for UnInstaller Upgrade](#)



Moving an Application




Moving an application with UnInstaller Mover is quite simple. The following steps are used to move an application with UnInstaller Mover.

-  [Step 1:](#) Start UnInstaller Mover.
-  [Step 2:](#) Select the application you want to move.
-  [Step 3:](#) Select the destination drive and directory.
-  [Step 4:](#) Finish the operation.

To learn more about each step, click on the appropriate step number.

Related Topics

- [Starting UnInstaller Mover](#)
- [Selecting the Application to Move](#)
- [Selecting the Destination](#)
- [Finishing the Operation](#)

-  [Special Offer for UnInstaller Upgrade](#)

Starting UnInstaller Mover




To start UnInstaller Mover, double-click on the UnInstaller Mover program group in Program Manager. Then double-click on the UnInstaller Mover icon in the UnInstaller Mover program group. UnInstaller Mover will be started.

Related Topics

[Selecting the Application to Move](#)

[Selecting the Destination](#)

[Finishing the Operation](#)

 [Special Offer for UnInstaller Upgrade](#)

Selecting the Application to Move



When UnInstaller Mover is started, the [UnInstaller Mover Main Window](#) is displayed. To select the application you want to move, you will need to locate the application you want to move using the [List View](#) displayed on the left side of the UnInstaller Mover Main Window.

The List View can be set to display the program groups in your Program Manager or to display the local drives and directories on your system.

By default, the List View displays all the program groups in your Program Manager. To search the local drives and directories on your system for the application you want to move, click the *Browse for Application* button. The List View will then be updated to display the local drives on your system. Click the *Show Program Groups* button to return the List View to its default display of program groups.

See [Using Program Groups](#) for detailed instructions on using the List View to select an application from the program groups in your Program Manager.


See [Browsing for an Application](#) for detailed instructions on using the List View to search for an application in a particular drive or directory.

Related Topics

[Starting UnInstaller Mover](#)

[Selecting the Destination](#)

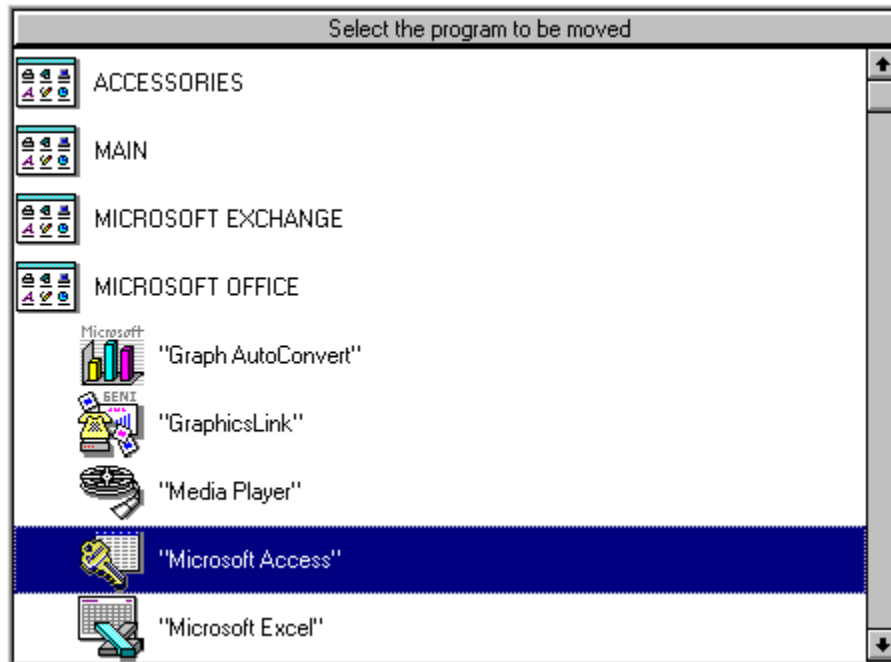
[Finishing the Operation](#)

 [Special Offer for UnInstaller Upgrade](#)

Using Program Groups



By default, the List View lists the program groups in your Program Manager as shown in the following figure. If the List View is displaying your local drives and directories, click the *Show Program Groups* button to list the program groups in your Program Manager.



To locate the application you want to move, double-click on the program group that contains the icon for the application you want to move. When you double-click on a program group, all the icons contained in the program group are listed beneath the program group. Select the application you want to move by clicking on it. The name of the currently selected application is listed at the bottom of the UnInstaller Mover Main Window.

In the figure above, the selected application is Microsoft Access which is found in the Microsoft Office program group.

Once you have selected the application you want to move, click the *Move Application* button located on the right side of the UnInstaller Mover window.

Related Topics

[Browsing for an Application](#)



[Special Offer for UnInstaller Upgrade](#)



Browsing for an Application



If you cannot find the application you want to move in the program groups from your Program Manager, you can browse for the application by clicking the *Browse for Application* button.

When you click the *Browse for Application* button, the List View displays all the local drives on your system as shown in the following figure.



To locate an application on a drive, double-click the drive icon. When you double-click the drive icon, all the directories in the root of that drive will be listed beneath the drive icon. You can double-click a directory to see a listing of all the applications and subdirectories contained in that directory.

Expand the appropriate drives and directories until you locate the application you want to move. Once you locate the application you want to move, select the application by clicking on it. The name of the currently selected application is listed at the bottom of the UnInstaller Mover Main Window.

In the figure above, the selected application is FaxView.Exe which is located in C:\Exchange.

Once you have selected the application you want to move, click the *Move Application* button located on the right side of the UnInstaller Mover window.

Related Topics

[Using Program Groups](#)



[Special Offer for UnInstaller Upgrade](#)



Selecting the Destination



Once you have selected the application you want to move and clicked the *Move Application* button, you will be prompted to select the destination drive and directory.

From the *Move Destination* dialog, you can specify the destination drive and directory. To simply move the application to another drive using the same application directory structure, select the drive from the list of drives displayed. After selecting the drive, click the *Start Move* button to move the application.

If you want to select a destination on the same drive or on a different drive using a different application directory structure, enter the full path of the destination in the *Move Destination* edit field located at the bottom of the UnInstaller Mover Main Window. You can also click the *Browse* button to browse for the destination drive and directory. After selecting the destination directory, click the *Start Move* button to move the application.

Related Topics

[Starting UnInstaller Mover](#)
[Finishing the Operation](#)



[Special Offer for UnInstaller Upgrade](#)



Finishing the Operation



After selecting the destination directory and clicking the *Start Move* button, the application will be moved to the new location. A progress bar will be displayed which shows the status of the move operation.

Once the operation has been completed, you will be prompted to select from the following options:



Run App: Runs the application you have moved from its new location. It is a good idea to try to run the application to make sure it works properly in its new location. If the application does not work properly, you can click the *Undo Move* button to move the application back to its original location.



Undo Move: Places the application back in its original location as if you had never moved it.



Done: Exits the dialog box and takes you back to the UnInstaller Mover Main Window .



Help: Displays the UnInstaller Mover Help file.

Select the appropriate option to continue.

Related Topics

[Starting UnInstaller Mover](#)
[Selecting the Application to Move](#)
[Selecting the Destination](#)



[Special Offer for UnInstaller Upgrade](#)



Getting to Know UnInstaller Mover



UnInstaller Mover is designed to help you quickly and efficiently move an application to another drive or directory. This utility helps you organize your drives by putting applications where you want them. For example, you can move applications from a drive that is nearly full to another drive that has more room. You can also use UnInstaller Mover to move applications to new directories on the same drive so you can get more organized.

The capabilities found in UnInstaller Mover go beyond what you can accomplish with File Manager or DOS commands. When you move application files with File Manager or DOS commands, the files are simply moved from one location to another. There is no intelligence about the operation.

With UnInstaller Mover, you get intelligent move operations. UnInstaller Mover uses the famous MicroHelp UnInstaller SmartLinks technology to determine all the files, application settings, and system settings used by the application you are moving. It then moves the appropriate files and modifies any system and application settings that need to be changed. This capability is not available when you simply move files using File Manager or DOS commands.

By using UnInstaller Mover, you can be sure that your application will work after you move it. With File Manager or DOS commands, most applications will not work after they are moved to a new drive or directory because system and application settings are not updated to reflect the new location of the application. Therefore, the application does not know where to find certain files and the system does not know where to find the application.

UnInstaller Mover is easy to use and does not require you to be an application or system expert. The following topics will help you get started using UnInstaller Mover. See [The Main Window](#) for a description of the UnInstaller Mover application.

Related Topics

[Introducing UnInstaller Mover](#)

[Moving an Application](#)

[Setting UnInstaller Mover Preferences](#)



[Special Offer for UnInstaller Upgrade](#)

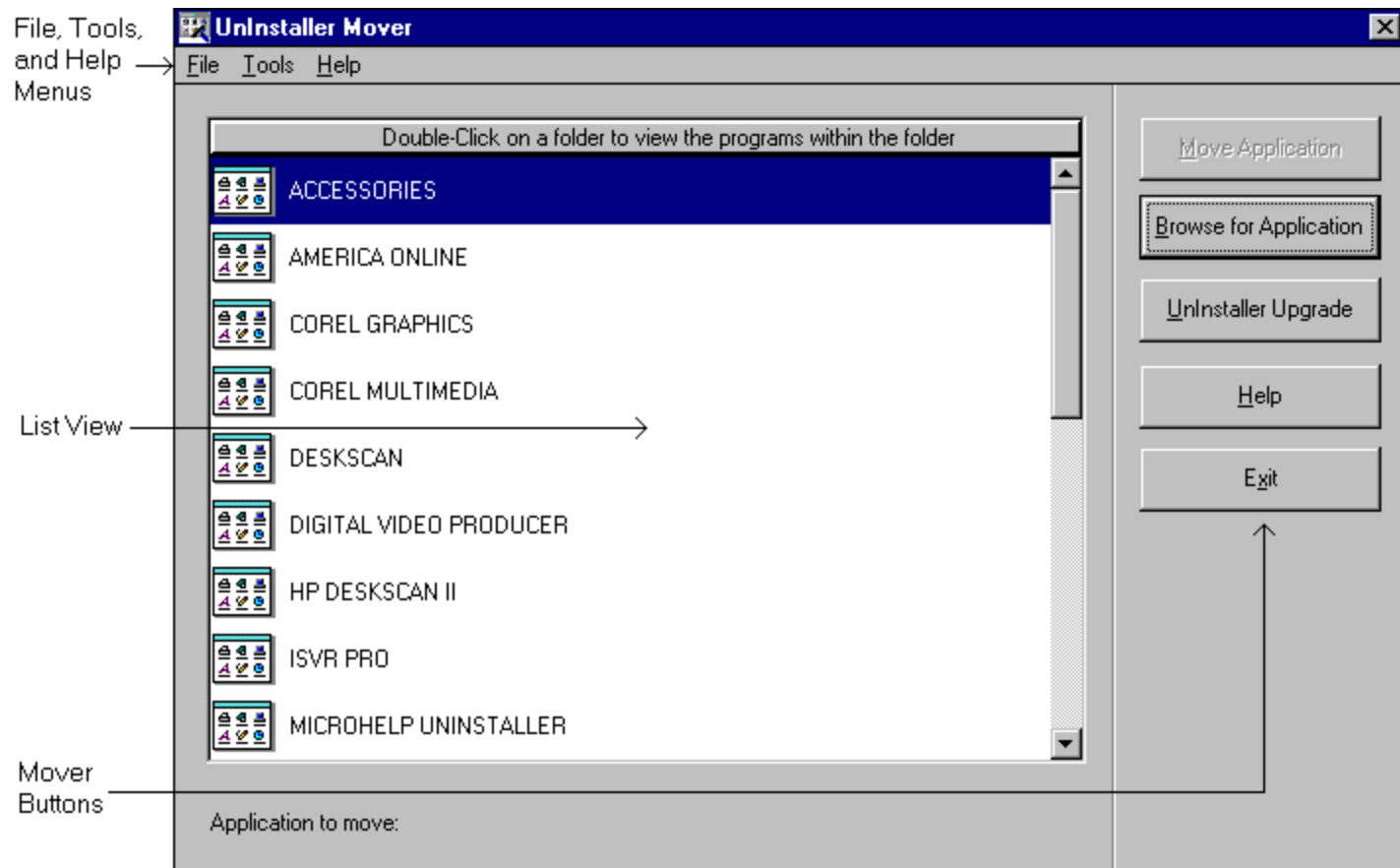


The Main Window



When you start UnInstaller Mover, the main window is displayed. From the main window, you can select the application you want to move and access all the UnInstaller Mover features.

The UnInstaller Mover main window contains the following major components as shown in the figure below: the File Menu, the Tools Menu, the Help Menu, the List View, and the UnInstaller Mover Buttons.



Related Topics

- [Introducing UnInstaller Mover](#)
- [Moving an Application](#)
- [Getting to Know UnInstaller Mover](#)
- [Setting UnInstaller Mover Preferences](#)



[Special Offer for UnInstaller Upgrade](#)



The File Menu



The File menu contains the following three menu items:



Preferences: Displays the UnInstaller Mover *Preferences* dialog. This dialog allows you to select reporting and sound options. See [Setting UnInstaller Mover Preferences](#) for more information about the options available in the *Preferences* dialog.



View Log: Displays the current report file. The report file describes, in detail, the actions that occur when you move an application. The report file will contain information for one or more operations depending on the settings in the UnInstaller Mover *Preferences* dialog.



Exit: Exits the UnInstaller Mover program.

Related Topics

[Getting to Know UnInstaller Mover](#)

[The Tools Menu](#)

[The Help Menu](#)



[Special Offer for UnInstaller Upgrade](#)



The Tools Menu



The Tools menu contains the following menu items:



[Move Application:](#) Displays the *Move Destination* dialog.

After selecting the application you want to move, you can select this menu item to begin the move process. When the *Move Destination* dialog is displayed, select the new location (the destination drive and directory) for the application being moved.



[Browse for Application / Show Program Groups:](#) This

menu item toggles between two states. Selecting the *Browse for Application* menu item changes the contents of the List View to display the local drives on your system. In this mode, you can browse through your drives and directories to find the application you want to move. Selecting the *Show Program Groups* menu item (the default setting) changes the contents of the List View to display all the program groups in your Program Manager. See [The List View](#) for more information about using the List View to locate and select the application you want to move.

Related Topics

[Getting to Know UnInstaller Mover](#)

[The File Menu](#)

[The Help Menu](#)



[Special Offer for UnInstaller Upgrade](#)



The Help Menu



The Help Menu contains the following menu items:



[Contents:](#) Displays the Contents topic of the UnInstaller Mover Help file. From this topic, you can access all other help topics in the UnInstaller Mover Help file.



[Search for Help On:](#) Allows you to search for words or phrases in the UnInstaller Mover Help file.



[How to use Help:](#) Provides information on how to use the Windows Help system.



[UnInstaller Upgrade:](#) Provides specific information on how you can upgrade UnInstaller Mover to the full retail package the award-winning MicroHelp UnInstaller.



[About UnInstaller Mover:](#) Displays copyright and version information about UnInstaller Mover.

Related Topics

[Getting to Know UnInstaller Mover](#)

[The File Menu](#)

[The Tools Menu](#)



[Special Offer for UnInstaller Upgrade](#)



The List View



The List View allows you to select the application you want to move. The List View can be set to display the program groups in your Program Manager or to display the local drives and directories on your system.

By default, the List View displays all the program groups in your Program Manager. To search the local drives and directories on your system for the application you want to move, click the *Browse for Application* button. The List View will then be updated to display the local drives on your system. Click the *Show Program Groups* button to return the List View to its default display of program groups.

See [Using Program Groups](#) for detailed instructions on using the List View to select an application from the program groups in your Program Manager.

See [Browsing for an Application](#) for detailed instructions on using the List View to search for an application in a particular drive or directory.

Related Topics

[Getting to Know UnInstaller Mover](#)



[Special Offer for UnInstaller Upgrade](#)



Uninstaller Mover Buttons



The UnInstaller Mover buttons provide quick access to the UnInstaller Mover functionality you use most often. The following buttons are provided:



Move Application: Displays the *Move Destination* dialog.

After selecting the application you want to move, you can select this menu item to begin the move process. When the *Move Destination* dialog is displayed, select the new location (the destination drive and directory) for the application being moved.



Browse for Application / Show Program Groups: This

menu item toggles between two states. Selecting the *Browse for Application* menu item changes the contents of the List View to display the local drives on your system. In this mode, you can browse through your drives and directories to find the application you want to move. Selecting the *Show Program Groups* menu item (the default setting) changes the contents of the List View to display all the program groups in your Program Manager. See [The List View](#) for more information about using the List View to locate and select the application you want to move.



Uninstaller Upgrade: Provides specific information on

how you can upgrade UnInstaller Mover to the full retail package of the award-winning MicroHelp UnInstaller.



Help: Displays the UnInstaller Mover Help file.



Exit: Exits the UnInstaller Mover program.

Related Topics

[Getting to Know UnInstaller Mover](#)



[Special Offer for UnInstaller Upgrade](#)



Setting UnInstaller Mover Preferences



The UnInstaller Mover *Preferences* dialog allows you to select certain options that control the way reports are generated.

To display the UnInstaller Mover *Preferences* dialog, select *File | Preferences* from the UnInstaller Mover menu bar. The following options are available in the UnInstaller Mover *Preferences* dialog.



Output to Printer: When checked, the report for every move operation is printed using the printer specified in the drop-down list box located to the right of this checkbox. Using the drop-down list box, you can select the output device for the report. The *Printer Setup* button allows you to define options for the selected printer.



Output to File: When checked, the report for every move operation is saved in the file specified in the edit field located to the right of this checkbox. You can specify the name and location of the report file by clicking the *Select File* button. Reports are saved as text (TXT) files.



Add to File: When selected, and the *Output to File* checkbox is checked, new reports are added to the current report file. Use this option if you want to save all of your reports. By using this option, you will have an historical record of all the operations performed by UnInstaller Mover. Be aware, however, that the report file will grow in size with each move operation when this option is selected.



Overwrite File: When selected, and the *Output to File* checkbox is checked, only the latest report is kept in the report file. Use this option if you *do not* want to save all of your reports. By using this option, you will only have a record of the most recent operation performed by UnInstaller Mover. Using this option will keep the report file small.



Sound Alerts On: When selected, sounds are used to notify you when operations are complete.



OK: Saves the settings in the *Preferences* dialog, then closes the dialog.



Cancel: Closes the *Preferences* dialog without saving the changes made to the settings.



Help: Displays the UnInstaller Mover Help file.

Related Topics

[Introducing UnInstaller Mover](#)

[Moving an Application](#)

[Getting to Know UnInstaller Mover](#)



[Special Offer for UnInstaller Upgrade](#)



Special Offer for UnInstaller Upgrade



As a user of UnInstaller Mover, you are authorized to upgrade to the full retail version of UnInstaller for a special price. By upgrading to UnInstaller, you can delete, move, archive, and transport applications. You also get powerful cleanup tools to help rid your system of unneeded and unnecessary files.

Click on the *UnInstaller Upgrade* button in UnInstaller Mover for specific instructions on ordering your own copy of award-winning MicroHelp UnInstaller.

Related Topics

[Introducing UnInstaller Mover](#)

[Moving an Application](#)

[Getting to Know UnInstaller Mover](#)

[Setting UnInstaller Mover Preferences](#)

