



# Gold-Fax Viewer Help

The Gold-Fax Viewer contains the following functionality:

## Toolbar:



Print Image



Return to Gold-Fax



Scale Fit to Width



Scale Fit to Show Page



Zoom In



Zoom Out



Rotate 90 Degrees Left



Rotate 90 Degrees Right



Go to Page



Next Page



Previous Page



Send Mail

## Command Topics:

Load Image

Save Image

Print Image

Rotate Image

Scale Image

Image Map Control

Color Panel

Switching Pages

**Additional Topics:**

Image Formats

Gold-Fax Viewer Copyright © 1994 Data Processing Design, Inc.

# Load/Save/Print Image

## Load Image

The Load Button gives you a selection of files to load. Use the Load Dialog to load individual graphics images. Supported file types include TIF, DCX, GIF, BMP, PCX, and ASCII.. Native fax formats include TIF Group 3 and Group 4, and DCX.

Menu Equivalent: See 'Load Image' under the File menu.

## Save Image

The Save Button gives you the option to save the current image. Use the Save Dialog to save the current image to a different file format, with a different scale, or different file type. Supported file types include TIF, DCX, GIF, BMP, and PCX. Native Fax Formats are TIF Group 3, TIF Group 4, and DCX

Menu Equivalent: See 'Save Image' under the File menu.



## Print Image

The Print command calls up the Print Dialog. Use the Print Dialog to set up the print parameters, including printer driver, page size, and page range. Printing is done in background, allowing you to load other images while you wait for printing to complete.

Menu Equivalent: See 'Print... ' under the File menu.



## Send Mail

The Send Mail button allows you to send a received fax to a specified user via Microsoft Mail. When you choose the Send Mail button, the fax is converted to mail format, and the Microsoft Mail Send Note form displays allowing you to specify desired mail information.

See your Microsoft Mail documentation for complete instructions on sending mail messages.

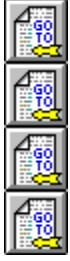
Menu Equivalent: See 'Mail' under the File Menu.

# Image Formats

Supported File Formats include:

PCX (ZSoft)	1, 4 and 8 bit support
TIF (Aldus)	Uncompressed, PackBits, Class F (Group 3/Group 4) 1,4 and 8 bits
GIF (CompuServe)	Summer 87. 1, 4, and 8 bit support. Non-interlaced only.
BMP (Windows)_	Windows native bitmap file format..
DCX (Intel)	Intel CAS Fax Format. 1 bit support. Multiple pages.
ASCII	Unformatted Text, Multiple pages

# Scale Image



## Zoom Controls:

The Zoom commands let you change image size by a fixed increment (either increase the image size, or decrease the image size).

Keyboard Equivalents: Use the + and the - keys on the Numeric Keypad

Menu Equivalents: See 'Zoom In' and 'Zoom Out' under the Scale Menu.

The **Fit to Width** button automatically calculates the image scale so that the image fits horizontally within the display window. The **Fit to Show Page** button automatically calculates the image scale so that the whole image is visible within the display window. Menu Equivalents: See 'Fit to Width' and 'Fit to Show Page' under the Scale Menu.

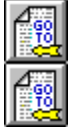
## Scale Controls:

Use the scale panel to set fixed scale values. The user can choose from a range of pre-specified scale values, or set their own preferred scale value. The Stretch Control stretches or compresses the image in the vertical direction only, while the scale control stretches or compresses the image proportionally (height and width are affected).

## Image Map Control:

Use this control to specify height and width independently. The Control displays a map of the whole image, and a proportional display of what area of the image is visible.

# Rotate Image



## **Rotate Controls:**

The Rotate Button switches the image orientation 90 degrees counter counterclockwise or clockwise. Use the rotate button to turn images upside down or sideways.

Menu Equivalents: See 'Rotate Normal', 'Rotate 90', 'Rotate 180', 'Rotate 270' under the View Menu.

# Switching Pages



## Page Board

Switch between pages preemptively. The last page does not have to re-paint before switching to the next. The Page Board allows you to jump between pages in any order. The currently active page is the button currently in the down position.



## Go to Page / Next Page / Previous Page

Go to a specified page, go to the next in a series, or go to the previous in the series. If only one page is available, then these buttons are disabled.

Menu Equivalents: See 'Next Page', 'Previous Page' and 'Go to Page' under the View menu.

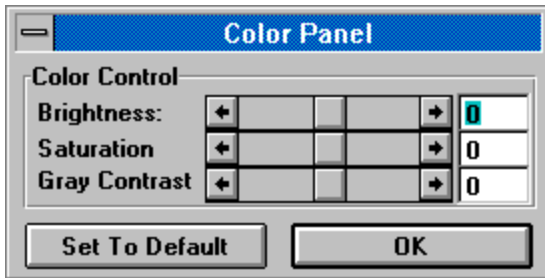




## **Return to Gold-Fax**

This button provides a convenient method to return to Gold-Fax for Windows when the viewer is launched from that application. This button is disabled when the viewer is launched by the user.

# Color Panel



Use the Color Panel Control to change the image attributes.

# Image Map Control

Use the Image Map Control to position the view window, and set image scaling. Use the Image Map Control to get a birds eye view of where you are in the image. Adjust the view box size dynamically. By changing the size of the view box, you can control exactly how much of the image is visible. All cursor keys are active, including the arrow keys, page up, page down, and tab.

