

MDESK v1.2

[Contents](#)

Note about the Mail service [Click Here](#)

Introduction

[What is MDesk](#)

[Why MDesk ?](#)

[Bundle with Watcher 3.0](#)

Overview

[First steps](#)

[Overview](#)

[Main Menu description](#)

How to use it

[The desktop Icon](#)

[The Taskbar](#)

[The Trashcan](#)

[The Application icons](#)

[Folders](#)

[UnInstall](#)

[Printer Icon](#)

[Find Program/File](#)

[Progman Groups manager](#)

[Mail and \[Inbox/Read Mail\]\(#\)](#)

Miscellaneous

[International Versions](#)

[Technical info](#)

[Credits](#)

[Registration ?](#)

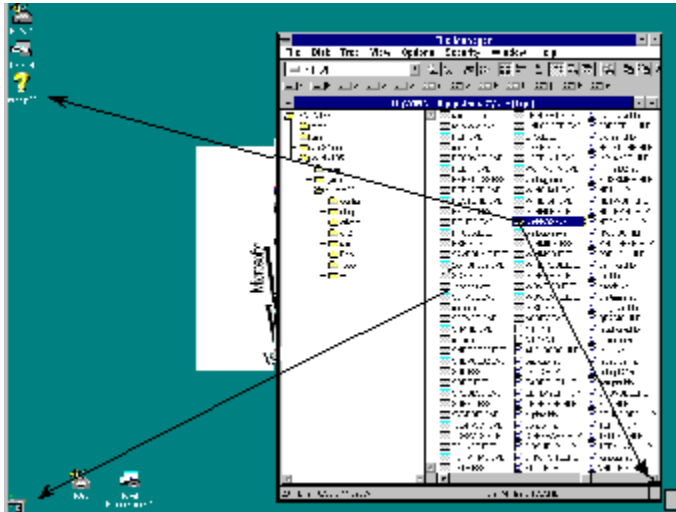
[What's new ?](#)

[Comments ?](#)

Overview

When MDesk starts (when logging or just when running it from the Fileman) the screen could be like that (without the arrows of course):

With the Taskbar on the right (you can try it now)



If you want to add some program to your virtual desktop just drop it from any Drag&Drop server (like Fileman.exe) to the Desktop icon

It will be automatically added to your desktop and placed. If the icon is not placed as you want, just move it, its position will be saved before the Shut down.

If you want to delete an icon from you desktop then right click on it to get the local menu or just drop it in the trashcan. (see Icons properties for drag&drop of Application Icons).

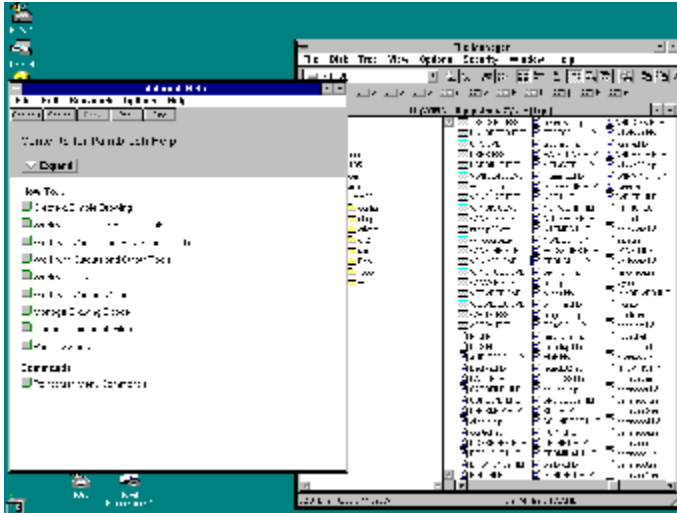
If you want to delete a file from your hard disk and if you want to possibility to undelete is then drop it in the trashcan

Here, you drag the file.

So you can drop it in the Trash (Icon on the right side)

You can also run one of your program by drop a filename on it example:

Drag a file from the fileman then drop it in the right icon (Ex: .HLP to Winhlp32.Exe)



And that's all. It's easy and fast.

Virtual Desktops

Your environment can be separated into multiple virtual desktops.

To switch from one desktop to another call the main menu then click on the name of the desktop you want to switch to.

The applications which are running in the current virtual desktop use their startup Priority, and the application which run in hidden desktops run with the lowest Priority

Priority

All the Processes have a startup priority. The priorities are:

IDLE: its the lowest priority level (Used by default)

NORMAL: Medium priority level

HIGH: High: priority, used by applications which need to run fast

REALTIME: Very high priority, only used by system (Win Logon for example)


Shutdown

You have to execute the Shutdown at the end of your working session before turning off the computer. Thus, Windows NT will save your data. And MDesk's config will be saved too.



Credits

First of all, I want to dedicate this program to my Father, **André Thioux**, for all he taught me and all he brought to me.

I want to thank **Hideyuki Inada** for all his advices and also because he shares the same passion: 

And I want also say hello to a couple of friends in alphabetic order

Bryan Althaus.
Christèle Lecuyer
Christophe Dubourg (Take a look to ZDIFF 2.1)
Christophe Job
Frédéric Thomas (Author of Watcher 1.0, 2.0 and soon 3.0)
Gareth Bowles
Glynne Davis
Hervé Amblard
Jean-Denis Munos
Jurgen Fesslmeier (The Hawaiian dude)
Kirk A. Frey (for all his ideas)
Martin Levy (My Boss !)
Montserrat Sanz-Fernandez
Robert & Patricia Chevallier
Sandra Horvath
Werner Froidevaux (Another guy full of ideas)

MDesk has been realized with Borland C++ 4.51.

Donuts

Wonderful cakes made in US. If you've never tried 'em... you really miss something !!! It's so good ! Unfortunately we don't have that in France. And that's really a shame. Just to think about it... Ok ! see ya !

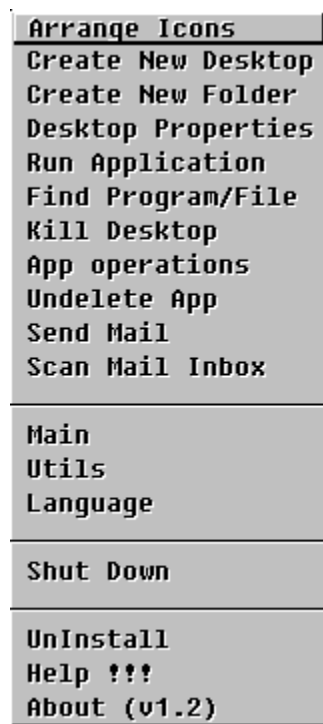
Main Menu description

It's kind of simple to use MDesk.

First of all, when you start it for the first time you just have the desktop on the bottom-left. And that's all. If you ran it from the program manager then, you can run the File Manager and drop some programs into the Desktop icon.

If you've installed MDesk as desktop in this case what you have to do is to use the function Run Application from the main menu.

Here is the Main Menu:



Arrange Icons

This option allows MDesk to rearrange the icons. The icons will be arranged dependently of the current desktop properties

Create New Desktop

Used to create a new desktop. Just enter the name of the desktop you and to create.

Create New Folder

Create a new folder to store you applications.

Desktop Properties

Call the Desktop Properties dialog box.

Run Application

Displays a dialog box where you can enter the name of the program you wanna execute. Then it executes the selected program.

FindProgram/File

Allows you to find a program (default .EXE) or a file then drag&drop it anywhere you want.

Kill Desktop

Delete the current desktop and all its contents. This option cannot be used with the main desktop.

In fact if you want to delete the main desktop then, all you need to do is to delete the key: MDesk in the registry : HKEY_CURRENT_USER\SOFTWARE\ManuApps.

App Operations

This option is used to transfer a running application from one desktop to the current one. It will display a dialog box containing the name all all the running applications then you'll just have to make your choice. It can be used also to kill an application.

Don't worry if you cannot select Freeze and unFreeze. It's just that they are not implemented yet.

Undelete App

Used to undelete an Application icon. In fact when deleting an Application icon it's not physically destroyed. So, you can undo the delete until you exit, or logoff or shut down.

Send Mail


This option allows you to send your mail via internet (tcpip).

if your machine is connected to Tcpip and to a Unix (or other server) then you'll be able to send your mail.

The only thing you need is a domain name (i.e *blah-blah.com*)

Scan Mail Inbox

This option let you scan your inbox and see if you have new mail or not.

In the case you've got new mail, then the new one will appear in the list box preceded by a , otherwise the message will be preceded by



Shutdown

Displays the shut down dialog box.

You'll have the choice to Shut Down the system, Shut down and restart, logoff or exit from MDesk..

The names between the two separators are the names of your desktops.

To switch from one desktop to another just click on its name.

If there is more than 5 desktops then you'll get a dialog box asking you which desktop you wanna switch on.

Main Menu

You can get the main menu with 3 different ways:

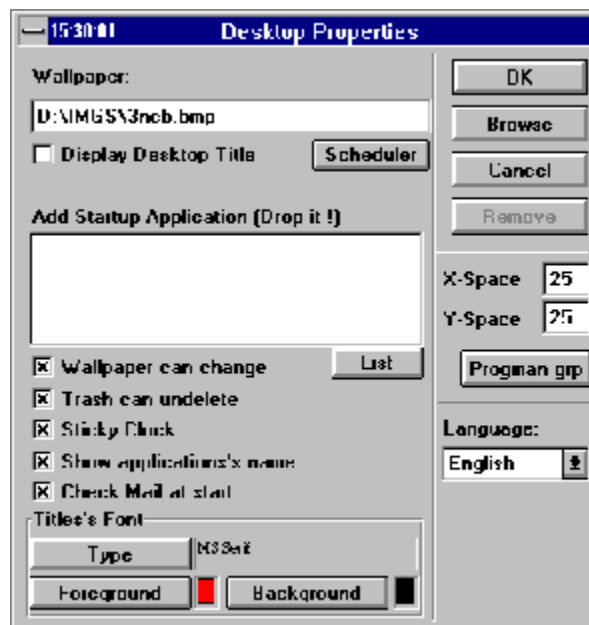
You can right-click on the desktop itself (Window with the wallpaper).

You can right-click on the Desktop Icon. (the menu will appear on "button up")

If the Desktop or one of its icons is active then you can strike Left-Shift and Right-Shift simultaneously.

Desktop Properties

When you select Desktop Properties you get the following dialog box:



The followings options are locale to the current desktop:

Wallpaper
X-Space
Y-Space

The following options are global to all the desktops:

Display Desktop Title (if you select that one you be also able to
Display the clock as well).

Startup Application.

If you want to add an application to the startup group then, drag it from
a Drag&Drop application like WinFile then drop it in the list box.

Scheduler.

By clicking on Progman Group

If the Sticky Clock is checked then you'll have the clock permanently on the current
active window. Usefull sometimes.

You can also deactivate the Mail checking if you don't want it or if you don't have
Unix Mail at all. Anyway, MDesk'll try to look in your registry to find out wherever
you've got access to Unix Mail or not, and if not, it will deactivate that option automaticly.

X-Space

Space in pixel separating two icons.

Y-Space

Horizontal space separating two icons.

Key

Registry key. Used by windows NT to store information and configuration. Used with Sub Keys too.

The registry replaces the INI files of Win 3.1.



Printer Icon

The printer allows you to print a file (or several).
In order to print something, the Printer object looks into **HKEY_LOCAL_MACHINE\CLASSES** to see if it can find the program which will be able to print your document.

Example: you drop FOO.TXT.
Printer will look for **.TXT**.
When it finds (if any subkey corresponding) it will get the corresponding program. In this case NOTEPAD.EXE. Then it will call Notepad.exe with the correct parameter.

If the printer object cannot find the default extension in the registry it will advise you of its failure. Obviously all the files type aren't supported.

By double-clicking on this icon you get a configuration dialog box.
You can modify the property of the different extensions.

By clicking on the **ADD** button you get another dialog box.

- * This dialog box asks you for the extension of the programs. (Always enter extension with the dot ex: **..DIZ**)
- * Then it requires a code name. You can select one the existing codes (as "txtfile" for example).
- * And, at last, you need to enter the name of the application which will print your documents having the given extension. Be carefull, if you enter for the "code name" an existing code then, you need to respect the previous value of this code. Otherwise you can screw up the settings for your other documents.

Have fun !

HKEY_CURENT_MENU

Main key which contains ManuApps Key and MDesk SubKey.

Registration

Well !!!

There no registration to make to use MDesk cos' it's a FREEWARE, and in FREEWARE there is **FREE** (Yeah !!!.)

So don't worry, you won't have limited time version or big splash screen saying that your version ain't registered and then you have to wait for ages...

So, no bloody gags and no: Hey dude ! you MUST register.

Anyway, if you want to send me some money I'm not against it, In fact I need some to change of car so... q:-)

If you want to send me a message (for bug report or just to talk)

Send all that to:

CIS: 75667,1346

INTERNET: Ethioux@Borland.com
Ethioux@wpo.Borland.com

Snail Mail: Emmanuel Thioux
2333 Portola drive #36
Santa Cruz CA, 95062
U.S.A

Snail mail

Hey ! if you want to send me a postcard don't hesitate. It's a cool stuff ! Maybe you'll get the sources for free !

Thanks.

Technical info

Known problems:

● The DDE server is not 100% compatible with the progman's own server. I know what are the command and how to use them, but it seems that every application use it as it wants !

Borland: [CreateGroup(-----)]
[AddItem(----, ---, ---)][AddItem(---,---,---)]...

Microsoft: [CreateGroup("-----")]
[AddItem("----")]
[CreateGroup("-----")]
[AddItem("----")]

Word Perfect: ???

So, obviously it's not easy. But if anybody has any suggestion....

● When displaying the Wallpaper MDesk does not care about the display method... It displays every Bitmap in the same way. Tile or Center. Dependently of the current config. But I'm gonna change that.



Error codes:

When trying to run a program from its Icon, if you get an error, then note the code and report you to the WIN32 APIs volume 2. There are the errors codes you can get.

The most common error codes are:

- 2: Program not found (verify your icon priorities)
- 193: Bad EXE format
- 123: Invalid name (verify your icon priorities)
- 5: Access denied (seldom)

Miscellaneous:

To change the priority of the applications during the Windows session I've used **OpenProcess** followed by **SetPriorityClass**. Cos' **GetWindowThreadProcessId()** returns the ID of the process and not its HANDLE.

For the Desktops, the trick is to hide the Windows displayed in a particular Virtual Desktop and

keep a track of those windows. Which let me the possibility to transfer an application from one desktop to another. In the first Release, it didn't work for 16 bits applications cos' I misused **GetWindowsThreadProcessId()**.

So, (I didn't notice that stupidity) I changed of technic and enumerated the windows (Visible windows).

I've added a **TRY** section during the enumeration because at the begining, I called GetWindowText() to get

the title of my windows and the weird thing was that **GetWindowText()** on the Desktop Window crashed. Exactly

as **GetWindowLong(GetDesktopWindow(), GWL_WNDPROC)**. Result: Exception 0x0D.

To reduce the icons I used **GetIconInfo()** which return the HBITMAP corresponding to the icon mask and the HBITMAP corresponding to the color bitmap. Then I just used **StretchBlt()** to reduce

the bitmap down to 16x16.

Bibliography:

Advanced Windows NT

by Jeffrey Richter

Microsoft press

Win32 APIs (in 5 volumes)

Microsoft press

Borland C++ 4.5 reference manual

Borland Intl

Undocumented Windows

By Andrew Schulman

Addison Wesley

Shining (L'enfant lumière, French release)

Stephen King

Send 'em to me.

CIS: 75667,1346

INTERNET: Ethioux@Borland.com
Ethioux@wpo.Borland.com

Snail Mail: Emmanuel Thioux
2333 Portola drive #36
Santa Cruz CA, 95062
U.S.A

¿ What's new ?

Yeah ! what's new in this version ? (and some before)

- ✦ Folders to help you to organize your desktop, and now they can also understand files associations..
- ✦ The TaskBar is now moveable. A right-click and Yo ! a menu !
The menu now also give you the opportunity to change of desktop
And it also now takes care of the Drives (i.e it replaces the Drive Bar)
- ✦ Mail manager to send your mail (via SMTP) and Inbox as well (to check your Unix Mail)
Enhanced.
- ✦ Processes manager to handle the different 32Bits active processes.
- ✦ . Some other things to come... Stick around.

Enjoy !



Trash

If you drop a file (from fileman.exe for example) to the trash. MDesk will delete it from the disk.

But if you drop an App icon from the desktop to the trash then MDesk will just delete this reference to the application.(Same as Right-click on Icon then Delete)

Double-Click on the trash icon to get the undelete dialog.

If you have selected Tash can undelete in the Desktop properties box then when dropping a file in the trash then it can be undeleted.

Purge will erase the selected files. They won't be recoverable no more.
Purge all will purge all the files for the selected drive.

The trash allows you to undelete only the files which were on your hard drives and not on floppies nor Network drives. In the case of a network drive the only thing you have to do to undelete a file is to run *Salvage.exe*. if the *Purge(.exe)* has not been executed.





Application icons

The Application Icons are the ones you put on your desktop.

If you double click on them you run the specified program.

If you drop a filename on them (when it's useful) then, you run the program using the dropped filename as parameter.

If you right click on them you get a local menu. Wich allows you to:

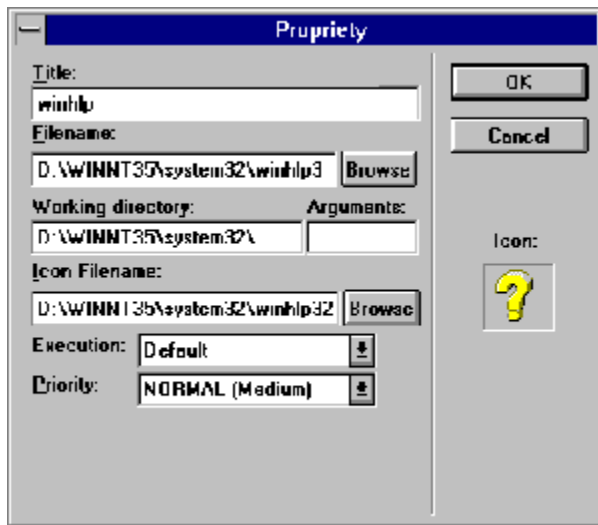
-  Run the program.
-  Set its properties
-  Delete it (undelete is possible too)
-  Shut down, logoff and exit

You can move your icons wherever you want on the desktop. Their positions will be saved. Moreover, if you right-click and hold SHIFT simultaneously you will be able to drag (& drop) your icon. Useful if you want to delete it (drop it in the trashcan) or if you want to duplicate it (Drop it in the Desktop Icon).

Warning: When dropping an icon, its name (application full name) is gonna be coded in Unicode so, don't be surprised if some programs don't recognize it. Especially 16bits programs wich don't use Unicode at all. And also, the trashcan does not ask for confirmation since you can undelete a deleted icon.

App Icons properties

When you click on the properties for an Icon you get the following Dialog box



All the edit boxes are normally filled but the Arguments one.

If your program needs arguments on the command line then, just enter them in that edit box.

Programs Execution

MDesk gives you the choice between 3 options:

Default.
Separate Mem. Env.
Unicode Env.

Default is the default execution. Used for 16/32 bits applications which don't need any special requirements.

Separate Memory environment is used usually for the 16bits programs. With using that option you can run 2 or more instances of the specified program and you can also protect your system against unstable applications.

Unicode environment is used for Unicode apps (Seldom).

TaskBar

The Taskbar is used to store the running applications names.

In fact only the iconized programs will be stored in the taskbar.

Only the v86 tasks (as CMD.EXE or DOS programs) cannot be put in the Taskbar.

Move on the visible part of the taskbar then you'll see all the buttons corresponding to your applications.

Click on the program you wanna see then enjoy !

It can be used also to transfer a program from an hidden desktop to the current one without using the

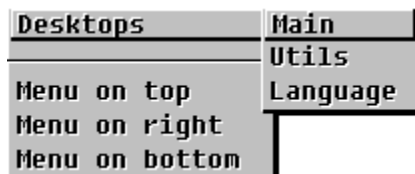
Transfer dialog box wich cannot transfer iconized applications.

To be more convenient, I have reduced the size of the icons downto 16x16.

You can also resize the taskbar (when it's vertical) by moving the mouse on the left edge as a regular window.

New: now, the Taskbar replaces the drive bar. You will find a small button on the bottom of the taskbar or the very right. This button call a menu wich gives you access to the drives. Just select the drive you want to browse and that's it !

If you **RIGHT CLICK** on the TaskBar then, you obtain a local menu



which allows you to place the bar

Either on the top of the screen or on the bottom or the right.

Or it can also be used to switch of desktop.

May I say that BC++ is really great ???
Yes ? Cool !!! So I do so:



C++ BC++ is really great (maybe more).

UnInstall

You can now uninstall MDesk directly from it without running MSetup again.

You have 3 options:

- Reset original program manager.
- Reset original program manager and delete files.
- Reset original program manager, delete files and clear registry.

When MDesk restores the original program manager it changes the value of

**HKEY_LOCAL_MACHINE/SOFTWARE/Microsoft/WindowsNT/CurrentVersion/WinLogon/
Shell**

To replace "Taskman.exe,MDesk.exe" by the former value (usually progman.exe).

What is MDesk

MDesk is a Desktop/Program manager.

It allows you to manage several virtual desktops (up to 256) during your Windows NT session and

it simplifies your work (life ?).

The virtual desktops are usefull if you want to run several applications in the same time, because, when switching from a desktop to another the priority of the background running applications

is reduced (down to IDLE) which allows foreground applications to run faster.

Moreover, you won't have all these 153165245 windows in the same time on your screen which narrows down your visiblity.

First steps

At the very beginning you will only have the [Desktop icon](#) and the trash. You can run any application with [Main Menu](#) | Run Application. Or you can just use the [TaskBar](#) to run Fileman.exe and choose the applications you will put in your desktop(s).

If you want to create a new desktop just: "Main Menu | New Desktop", then enter its name. For a complete description of the Main Menu go to [Menu Description](#).

The desktop Icon

The desktop Icon is used to add an application icon to your virtual desktop. It also can be used to make a copy of an icon or to move an application icon from the current desktop to another one.

To move an icon just drag it (Right button + Shift) onto the Desktop icon. Then you'll see a window with the list of your desktops. Just drop your icon in the desktop you want to.

If you want to copy an icon (duplicate) just drop it onto the Desktop icon.

If you right click on the desktop icon then you obtain the main menu.

Yeah ! life is cool !!!

This screen is totally useless but It pleased me to do it so...

Thanks for your patience anyway.

Manu.

Why MDesk ?

Good question isn't it ?

I work every day with NT 3.5. and as the Progman is not really convenient I decided in May 95 to make my own Desktop/program manager to offset the lack of features of Progman.exe.

The original Program manager is ok if you just run the same stuff every day and if you don't need more. But if you want some cool stuff as multi desktops or drag&drop then you got nothing. There's a couple of desktop managers in shareware, Dezktop v1.8 for example which contains some good features also.

The original idea was to make something easy to handle. I hope I succeed in this point. I have afterward, added couple of features following different persons ideas. Thanks to them once again (see the [credits](#)).

If you have any [comments](#), please let me know.

Scheduler

In fact it's a mini-scheduler wich reminds you couple of things.
You can just ask for a message to be displayed at a given time or
you can also run whatever application.

☒ I think that this option is not fully reliable for the moment especially
if you use the 12 hours time format (Sorry about that).

Folders

You can use the folders to put your least used applications.
Here is an example of folder:



To Create a folder, choose **Create folder** in the main menu.
Choose a name for the folder, and choose an icon.
Then, the folder is created.

If you want to add applications in your new folder just drop 'em from the file manager or whatever Drag&Drop server.

To get the local menu of the folder right-click on an icon.
The local menu is Icon oriented, With that menu you can change the properties of an application (same as for App Icons), you can delete an icon, delete the folder and run the selected application.
To run a program just double click on its icon.

You cannot drag these icons nor drop something. When dropping something in this kind of window will add the application to the folder.

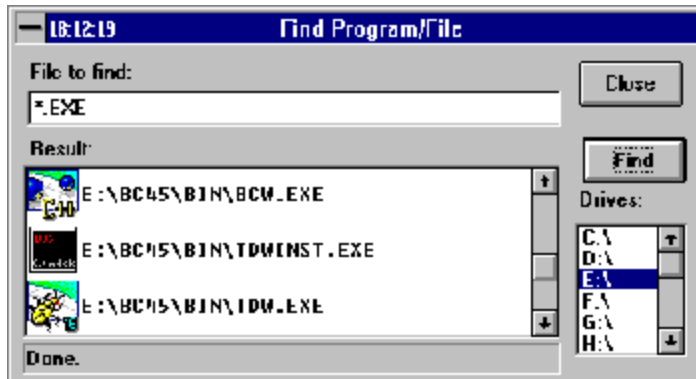
Folder Menu

PRINTMAN
<u>P</u> roperties
<u>R</u> un !
<u>D</u> elete
Dele <u>t</u> e <u>F</u> older

***Curious huh !
Don't worry me too***

Find Program/File

By choosing this option you can make different things.
First of all you're gonna get this dialog box.



(in bigger, and after research)

So, what you need to do is to select one or several drives for the search.
Set the extension or the name of the file(s) you want to find then click FIND.
When it's done, you can see in the second listbox the list of the found files and their icon if any.

Then you can select one entry in the list and drag it anywhere you want to.
If it's an .EXE and you drop it in the Desktop Icon then you'll add this application to your current list.
If you drop it on an application icon you'll run that application with the one you've selected in the list box as parameter.
You can also drop it in the Trashcan. Etc...

By double-clicking on the selected app you just run it !

If you've selected several drives, the search will look for your file thru all the selected drives.
Cool isn't it ?

Progman Groups

MDesk allows you to transfer your applications from the program manager to MDesk or its folders.

You can also by delete the files (it won't modifies the Program groups but it's gonna delete the files anyway).

You'll get this dialog box:



You can select one or several items in the list on the right. Then you can Drag&Drop 'em.

One simple application of that is, for example to create a folder then select your items and finally drag & drop them in the new folder.

*** If you want to drag more than one file, in this case use the **RIGHT** button of the mouse. Otherwise you can use independently the LEFT or the RIGHT button.

Happy ?



International Versions



MDesk is now available in:

- English.**
- French.**
- German.**
- Spanish.**

The language DLLs are not included in the original ZIP file, but they will be put in a separate file called MDSKLANG.ZIP.


MDesk can change the language at the runtime. Just call the Desktop Properties box then select the desired language. And that's all. In addition MDesk save this configuration so, the next time you'll run MDesk it will display the messages and dialog boxes in your own language.

To be able to use those different languages just unzip the MDSKLANG.ZIP into the directory where you installed MDesk.exe (normally Winnt35/System32 also called %SystemRoot%\System32).

The help file won't be translated (To big, and I have to convince first the guys to translate the product !!!).

Bundle with Watcher 3.0

The version 1.20.60 will be delivered with Watcher32 v3.00 by Fred Thomas
I've decided to deliver it with MDesk because I think that Watcher is definitivly
a real good product. wich makes your life easier.

Click here  to get help on Watcher 3.00

Watcher32 v3.00.

Cool Windows tool to watch your resources, time, play
your favorite songs on your CD, manage your phone directory, etc...

Lot of stuff.

Run under Win95 as well ! Try it !


Fred Thomas

Also called during the DOS (stone ?) age (NO WAY ! DOS rules and will ever), **Fred.asm**.

He's one of my best friends.

We have made couple of things together, programs, of demos etc...
I've got the highest consideration for him. He is also one of the guys
who helped me to come in U.S. Actually, he's the one who made the biggest
work for that.

Anyway, he made Watcher 1.00 and after a certain success he decided to keep
going and make an v2.00 then a 3.00 supporting Win95 and WinNT.

He's also a big  fan !Though he likes 'em with cinnamon (*sigh*)

Try Watcher 3.00 you won't regret.
You can also register your version of Watcher.

Thanks for everything Fred.

Manu.

This language is available
in the version 1.20.50.

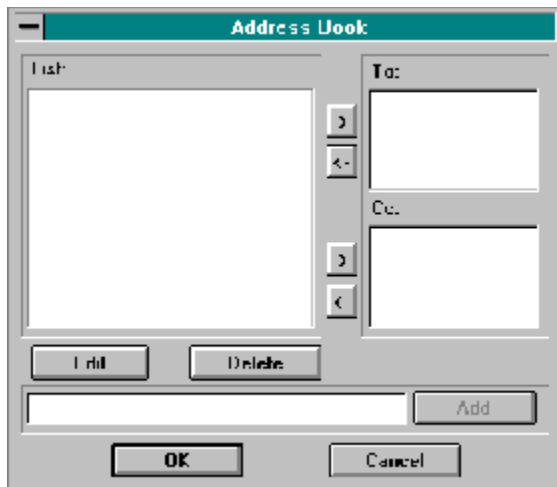
Not Available in the version 1.20.50
Will be available in next version.

mail

When you get the mail menu you've got several options:

- 1) Send Mail
- 2) Scan your mail
- 3) Look into your in/outbox
- 5) Check for new incoming messages

Address Book



At the beginning the list is going to be empty.

To add an address, just enter it in the edit line at the bottom of the dialogbox. Then, click **Add**.

This address will be automatically added to your collection of addresses. To delete an address then select an address in the list then click **Delete**.

To modify an existing address, select it in the list then click **Edit**

To add an address to the **To:** list just select the name then click the button -> nearby the **To:** listbox.

To add an address to the **Cc:** list just select the name then click the button -> nearby the **Cc:** listbox.

That's all !

Inbox/Read Mail

Your inbox contains all your **Unix mail**.

When you get the Dialog box to scan, read, delete, save, print your mail, you can see the opened mail and the new one.

✦ means the mail has been read at least once.

✦ means that mail has just arrived (or has not been read yet).

When MDesk starts, it will check if you have new mail or not. Until you read all your mail, it will tell you that you have new mail.

The very first time you'll run MDesk, it's gonna try to check the mail. Obviously it'll fail because the lack of information.

So, MDesk will ask you for the password of your mail box. (The password will be encrypted and saved somewhere).

Then MDesk will ask you for the host name. You can also modify these informations by selecting **Change config** in the main menu.

The host name is the name of the server you usually use to get your Unix mail.

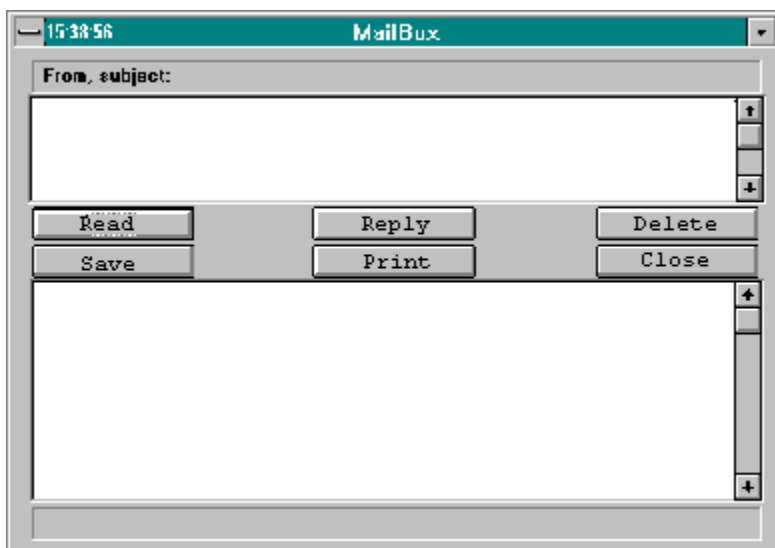
Example: the host name could be MyServer.MyCompagny.Com or MyCompagny.com.

etc...

Well, I guess if you used Unix Mail before you'll know how to use that. For more info [click here](#)

Then, when the Host is known as well as the password, MDesk will be able to check for new mail each time it starts.

When checking you incoming mail you'll use the following dialog box. Click on the buttons to get their relative information



Mail Note

The Mail service is for the moment under construction.

So, if you find bugz or things you want to be done then

send me a message, you'll find my e-Mail address in the section [Comments](#).

So, please send some feedback.

This Mail service is to be use with UNIX Mail. So, you need a Tcp/Ip connection.

Thanks.

Emmanuel.

Read: Read the currently selected message.
You cannot modify the content of this message.

More info about the Mail

I tried to make the most convenient mail service I could but, obviously no one has the same preferences and I'm not sure I succeed in this point. Anyway, I tried to make something which works and here too, I'm not sure I succeed. I used some infos I found on the NET (By the way that movie is really good !).

1) Getting the host.

I made the mail regarding my own configuration and obviously everyone has not the same. If you want to send mail you need a SMTP gateway which is not the hardest thing to find. It will allow you to send the mail, even if it has to forward it before. Anyway, the SMTP gateway is normally found on an Unix server. So, if you're connected to an Unix server you have good chance to be able to send your mail. I guess that NT Servers also provide this service.

So, let's say that you have a connection to, [compagny.com](#) then you'll be able to send mail. Look into your Control Panel/Network TCP/IP protocol. if you click Advanced button you see on the top right the default host name.

2) Receiving mail

To have an account on that host.

To be able to read your mail, I suppose that you need to have an account on your Unix server. Cos' if you don't I don't see how it can get your mail back.

Anyway, sometimes the real host is not simply [compagny.com](#) but could be [server.compagny.com](#)

Ask to your MIS. But if you have an account on your Unix/NT server I guess you know it no ? So, to receive the mail **you must have valid account.**

After that, the host name you specify can be for example only [server](#). So, it's kinda simple but complex

at the same time. Well, to know you gotta try ! Please let me know what's happen:

ethioux@genhis.borland.com

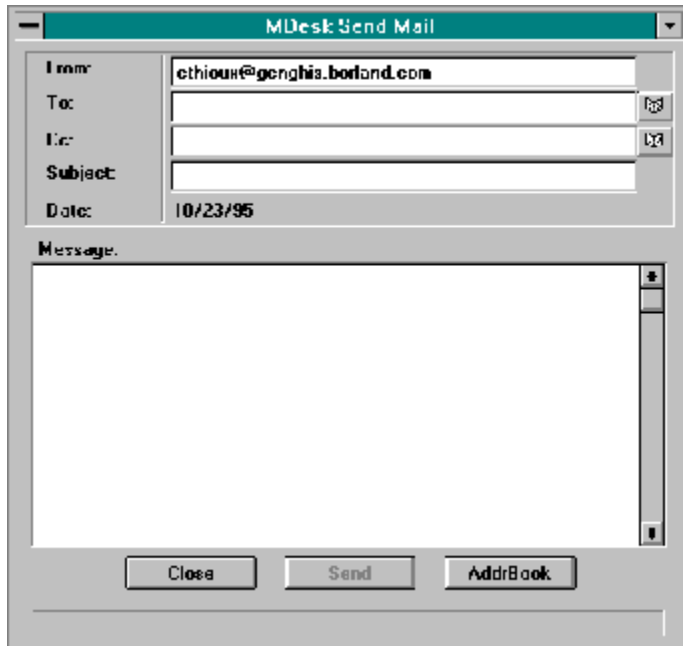
3) If you have any ideas, advices etc... please contact me.

Send Mail

Mdesk is now able to send your mail.
How to do it ???

Easy dude !

First of all you'll get this DialogBox:



So, just modify from who the mail comes if you want (be careful though, because the return address will be changed). For more details about your connection to the mail server [click here](#)

Select to Who you wanna send it and who to copy. You can type directly the names or you can also

use the [Address Book](#)

The two small buttons one the right of To: and Cc: give you access to a quick Address book.

Then just select

one or several names click OK then you'll have them directly in the edit lines.

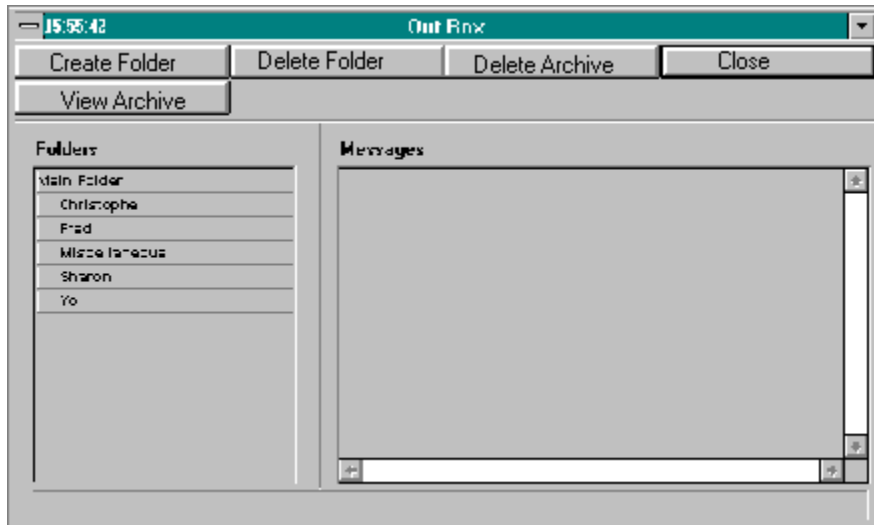
Then enter your subject and the text. And send it !

To get your mail you can check your [inbox](#) as well.

You can also deactivate the Mail checking when MDesk starts (see [Desktop Properties](#))

Your in/outbox

When you get the in/outbox you'll have the tremendous pleasure to get this dialog box:



Ain't it cool ???

Well, you can **Create** new folder (only under the main folder at this point), to **delete folders**, and also to **delete** some (or all) of your **archives**.

You can also move your out going mail from the main folder (it's where your messages go when you send 'em).

And you can also **read** the messages by selecting them and clicking **View Archive**.

When you are reading an archive, the folder's list box is disabled. You have to Close the Message to re-enable it.

The in/outcoming mails are copied in your In/OutBox. (If you didn't set up an In/out box then, select in the main menu: **MAIL | Mail Config**)

Not on this screen shot, there is also a button between the two list boxes.

This button is used to move your mail. When you want to move your mail form a folder to another, just select the mails you wanna move, then click on that button. (the button will change of design). Then select in the folders list box where you wanna move your mail to then click on the button again. And the mail will be moved.

MDesk will check for your new incoming messages and, if any it will ask you if you want to read them. If yes then it will run the Inbox dialog box.
If you don't have any new messages then MDesk will tell you too.

Reply: When you want to reply, then be careful because "Reply" is used for the **currently opened** message. So, if you read a message and if you change of selection in the list box then the reply will work for the opened message and **not** for the new selection.

When Replying to someone, MDesk automaticaly adds that address of your correspondent to your address book if it does not exist yet.

Delete: ??? (Try to findout)

Save: Save the message in a file.
And in the next version it will save it in your inbox

Print: Not implemented yet.

Processes Manager

Displays the list of current active processes (Only 32bits).

You can change their priority, or even kill them.

To change the priority by clicking on the radio buttons. Just select the process, click on the button and that's it ! Got it ?

Well, that's pretty much it.

